

Key Trends

Record high levels of heritage, museum or gallery (M&G) attendance and arts engagement. Library and archive attendance rates remain at the lowest levels since the survey began.

Significant percentage increase* since 2005/06:

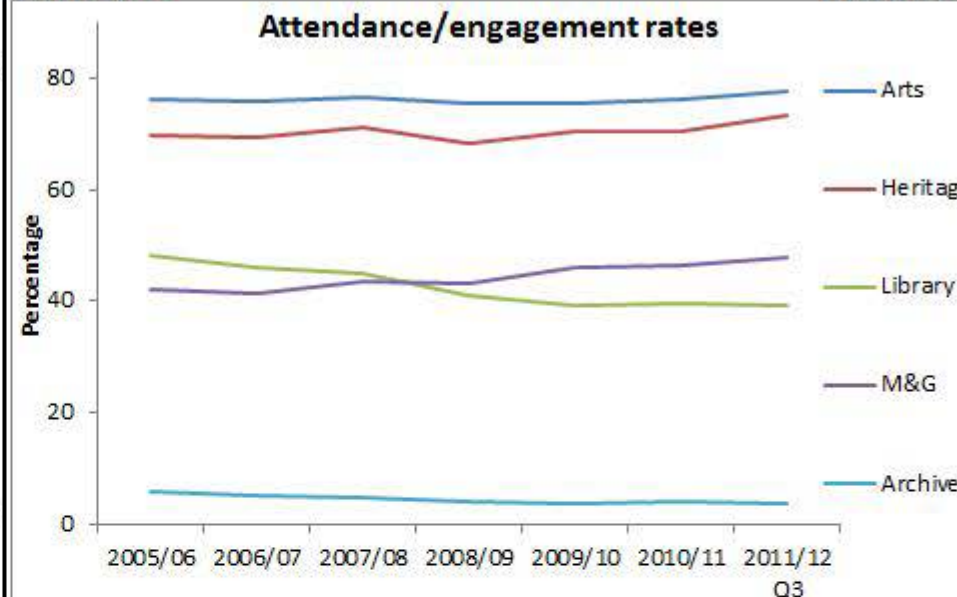
- of BME groups visiting a museum or gallery in the last year (from 35.4% to 42.5%)
- of adults aged 65+ engaging with the arts in the last year (from 64.3% to 69.0%)
- of adults doing 1x30 minute sessions of moderate intensity sport (MIS) in the last week (from 41.2% to 44.0%)
- of BME groups who had volunteered in the last 12 months (from 19.6% to 24.9%).

Significant percentage decrease* since 2005/06:

- of adults attending a library in the last 12 months (from 48.2% to 39.2%)
- of 16-24 year olds participating in sport at least once in the last 4 weeks (76.8% to 70.7%)

*selected results

Culture



Attendance/engagement levels

- ↑ Arts = 77.7%
- ↑ Heritage = 73.3%
- ↓ Library = 39.2%
- ↑ M&G = 47.9%
- ↓ Archives = 3.7%



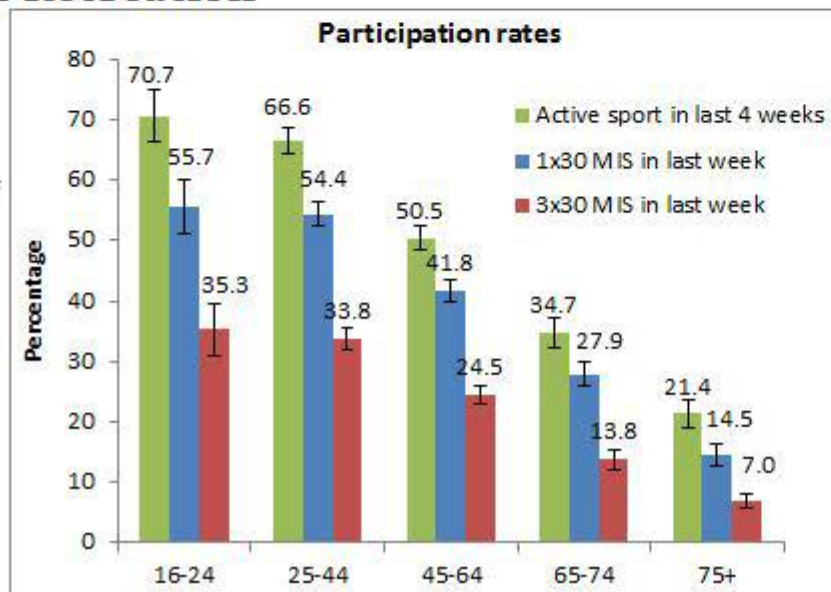
Sport & Active Recreation

Participation levels

Active sport in last 4 weeks = 54.4% ↔

1x30 MIS = 44.0% ↑

3x30 MIS = 26.4% ↑



Big Society

Volunteered

All = 23.7%

Any DCMS Sector = 7.3%

Charitable Giving

All = 89.2%

Sport = 6.7%

Heritage = 15.5%

Library = 0.6%

M&G = 14.4%

Any DCMS Sector = 31.4%

