

Section 1 - Total Energy

Key results show:

Total energy production was 2.8 per cent lower than in the third quarter of 2016, driven by low gas production due to maintenance activity. (**Charts 1.1 & 1.2**)

Total primary energy consumption for energy uses rose by 1.3 per cent. However, when adjusted to take account of weather differences between the third quarter of 2016 and the third quarter of 2017, primary energy consumption rose by 0.7 per cent. (**Chart 1.3**)

Final energy consumption (excluding non-energy use) rose by 1.7 per cent compared to the third quarter of 2016. Domestic consumption rose by 8.5 per cent reflecting the colder weather in the quarter, service consumption rose by 2.7 per cent, transport consumption rose by 0.3 per cent, whilst industrial consumption fell by 0.9 per cent. (**Charts 1.4 & 1.5**)

On a temperature adjusted basis, final energy consumption rose by 0.9 per cent. (**Chart 1.5**)

Net import dependency was 32.7 per cent, up 2.3 percentage points from the third quarter of 2016, reflecting the increases in crude oil and gas imports. (**Chart 1.6**)

Fossil fuel dependency fell to 78.2 per cent in the third quarter of 2017, a record low level. (**Chart 1.7**)

Relevant tables

1.1: Indigenous production of primary fuels	Page 12
1.2: Inland energy consumption: primary fuel input basis	Page 13
1.3: Supply and use of fuels, and Seasonally adjusted and temperature corrected final energy consumption	Page 14-16

Contacts for further information:

Warren Evans

Total energy statistics

Tel: 0300 068 5059

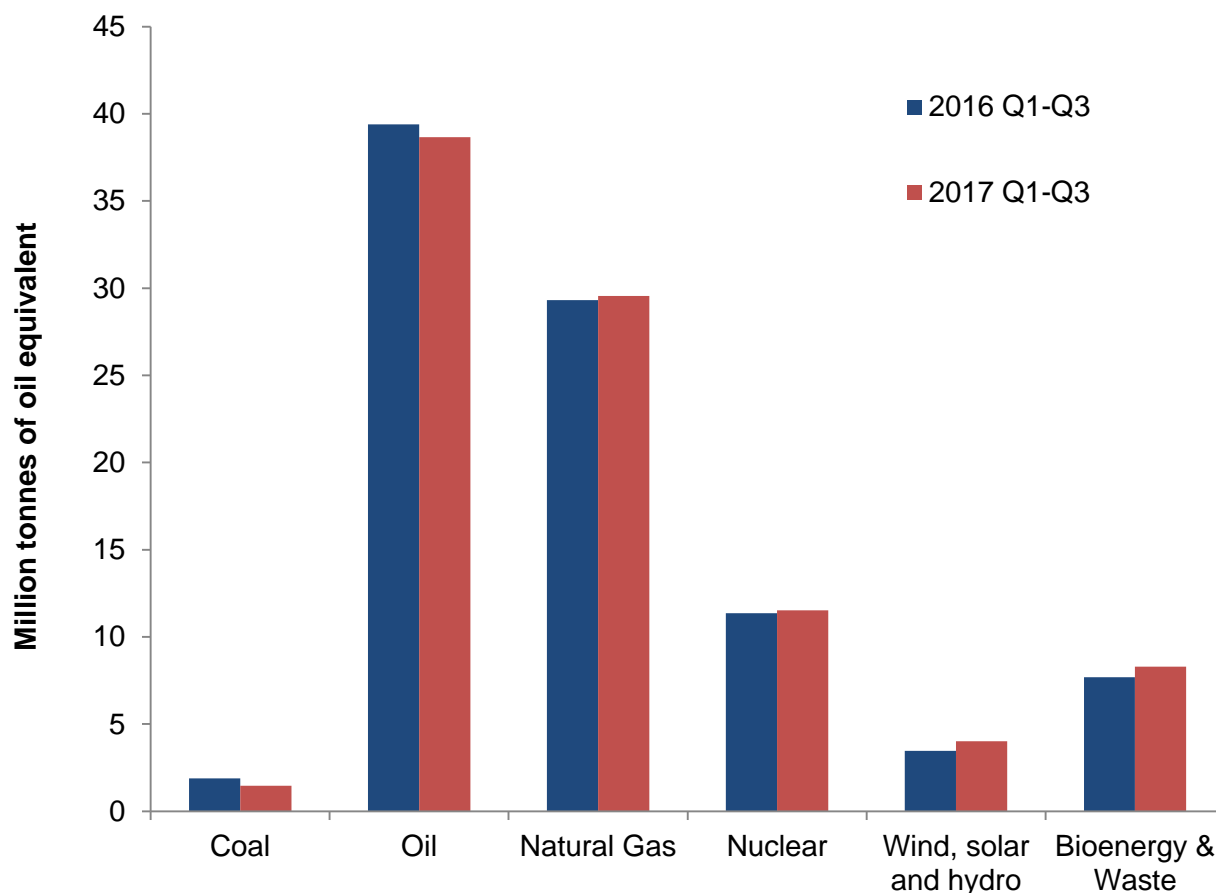
E-mail: Warren.Evans@beis.gov.uk

Kevin Harris

Total energy statistics

Tel: 0300 068 5041

E-mail: Kevin.Harris@beis.gov.uk

Chart 1.1 Production of indigenous primary fuels ([Table 1.1](#))

Total production in the third quarter of 2017 at 28.6 million tonnes of oil equivalent was 2.8 per cent lower than in the third quarter of 2016.

Production of oil fell by 0.4 per cent compared to the third quarter of 2016.

Production of gas fell by 10.7 per cent compared to the third quarter of 2016, as a result of low production levels in August and September 2017 due to maintenance activity.

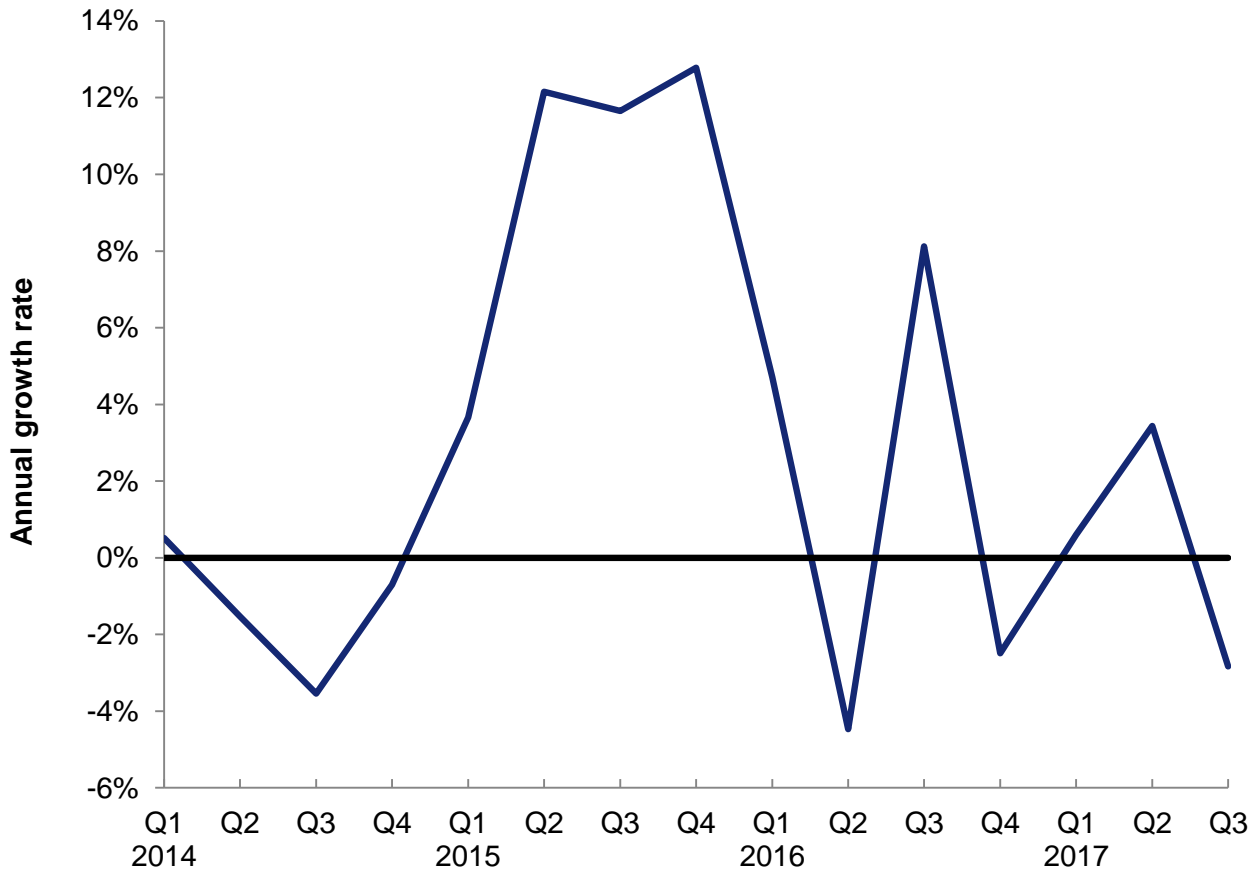
Primary electricity output in the third quarter of 2017 was 0.3 per cent lower than in the third quarter of 2016, within which nuclear electricity output was 3.6 per cent lower, whilst output from wind, solar and natural flow hydro was 11.9 per cent higher than the same period in 2016, due to increased renewable capacity (see section 6).

Production of bioenergy and waste was 24 per cent higher compared to the third quarter in 2016.

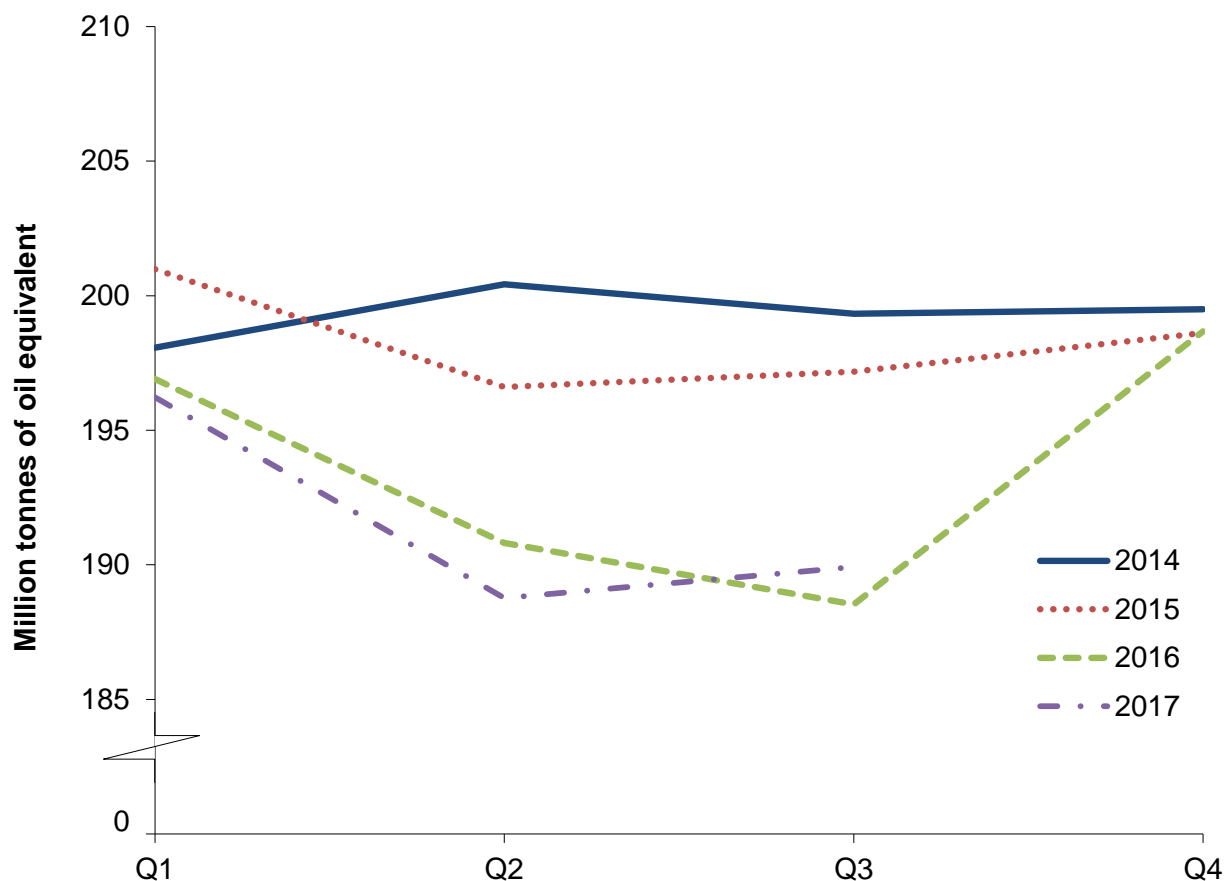
In the third quarter of 2017 production of coal and other solid fuels was 30 per cent lower than the corresponding period of 2016.

Total Energy

Chart 1.2 UK production (annual growth rate) ([Table 1.1](#))



In the third quarter of 2017, the annual growth rate of UK production was -2.8 per cent, with the growth in bioenergy and renewables (wind, solar and natural flow hydro) production more than offset by the reductions in coal, oil, gas and nuclear production.

Chart 1.3 Total inland consumption (primary fuel input basis) ⁽¹⁾ [\(Table 1.2\)](#)

(1) Seasonally adjusted and temperature corrected annual rates

Total inland consumption on a primary fuel input basis (temperature corrected, seasonally adjusted annualised rate), was 189.9 million tonnes of oil equivalent in the third quarter of 2017, 0.7 per cent higher than in the third quarter of 2016.

The average temperature in the third quarter of 2017 was 1.2 degrees Celsius cooler than the same period a year earlier.

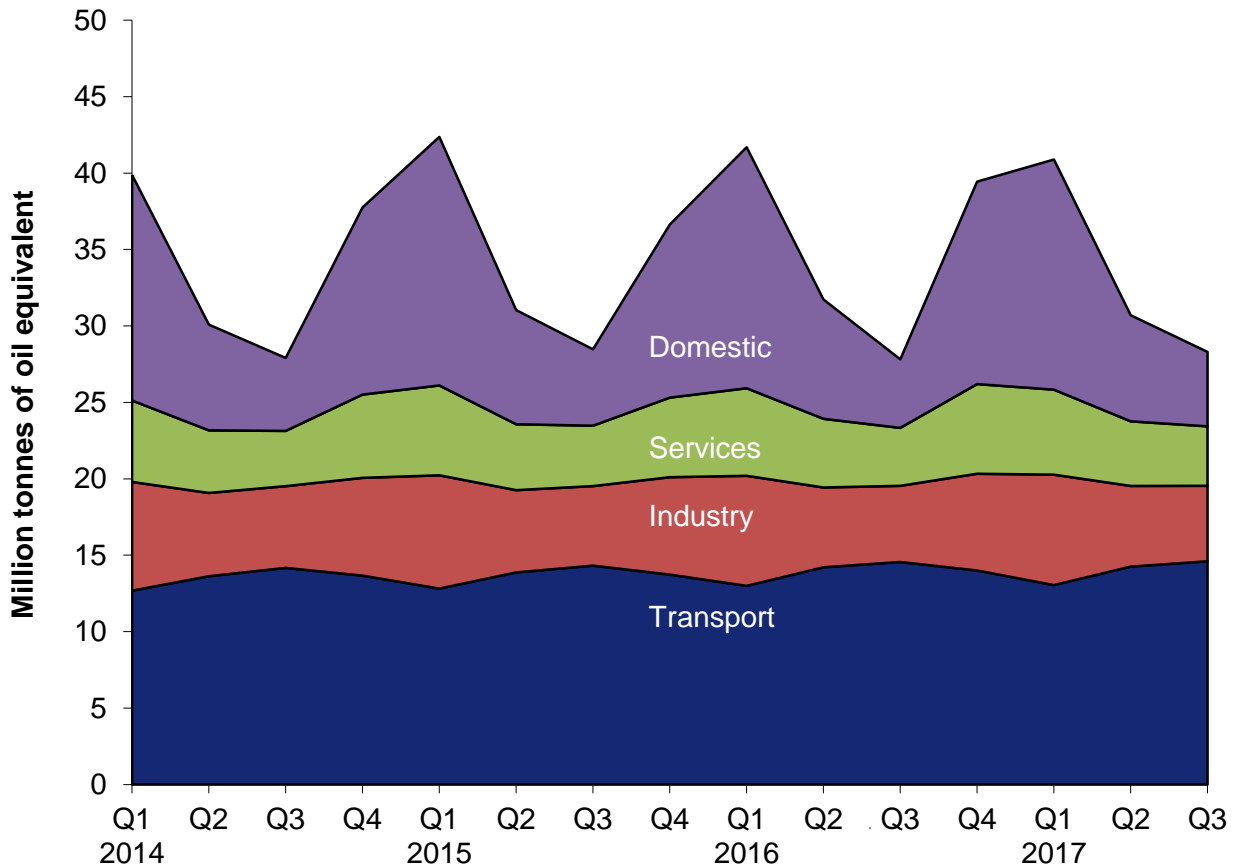
Between the third quarter of 2016 and the third quarter of 2017 (on a seasonally adjusted and temperature corrected basis) coal consumption fell by 21 per cent driven by decreased coal use in electricity generation.

On the same basis, oil consumption rose by 1.1 per cent, and gas consumption rose by 1.2 per cent.

Also on a seasonally adjusted and temperature corrected basis, there were rises in bioenergy and waste consumption of 15.7 per cent and in wind, solar and hydro consumption of 13.0 per cent, whilst nuclear consumption fell by 4.0 per cent.

Total Energy

Chart 1.4 Final energy consumption by user ([Table 1.3a](#))



Total final energy consumption rose by 1.4 per cent between the third quarter of 2016 and the third quarter of 2017.

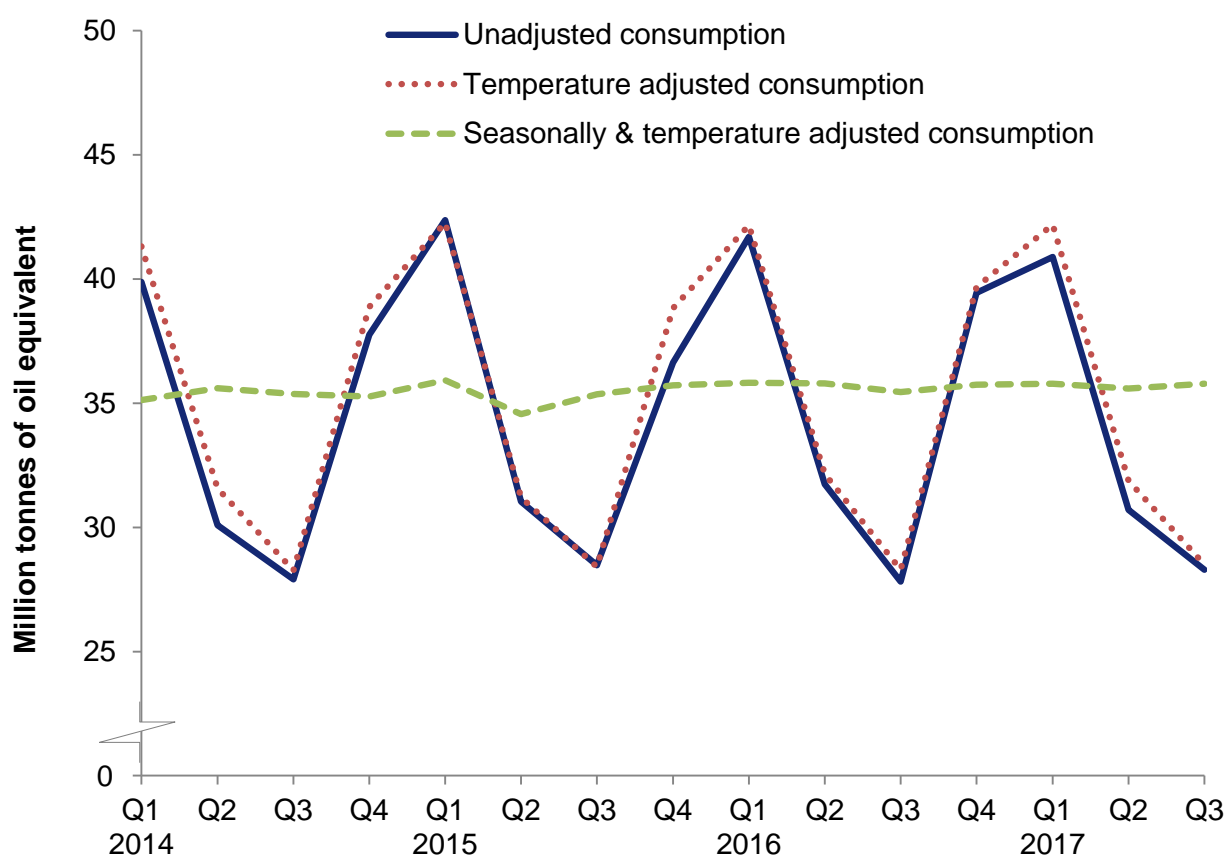
Domestic sector energy consumption rose by 8.5 per cent, reflecting the cooler weather compared to a year earlier. Average temperatures in the third quarter of 2017 were 1.2 degrees Celsius cooler than a year earlier, with average temperatures in September 2017 being 2.3 degrees Celsius cooler than in September 2016.

Service sector energy consumption rose by 2.7 per cent.

Transport sector energy consumption rose by 0.3 per cent.

Industrial sector energy consumption fell by 0.9 per cent.

Chart 1.5 Seasonally adjusted and temperature corrected final energy consumption
(Table 1.3c)



Total unadjusted final energy consumption (excluding non-energy use) rose by 1.7 per cent between the third quarter of 2016 and the third quarter of 2017.

On a seasonally and temperature adjusted basis final energy consumption (excluding non-energy use) rose by 0.9 per cent between the third quarter of 2016 and the third quarter of 2017.

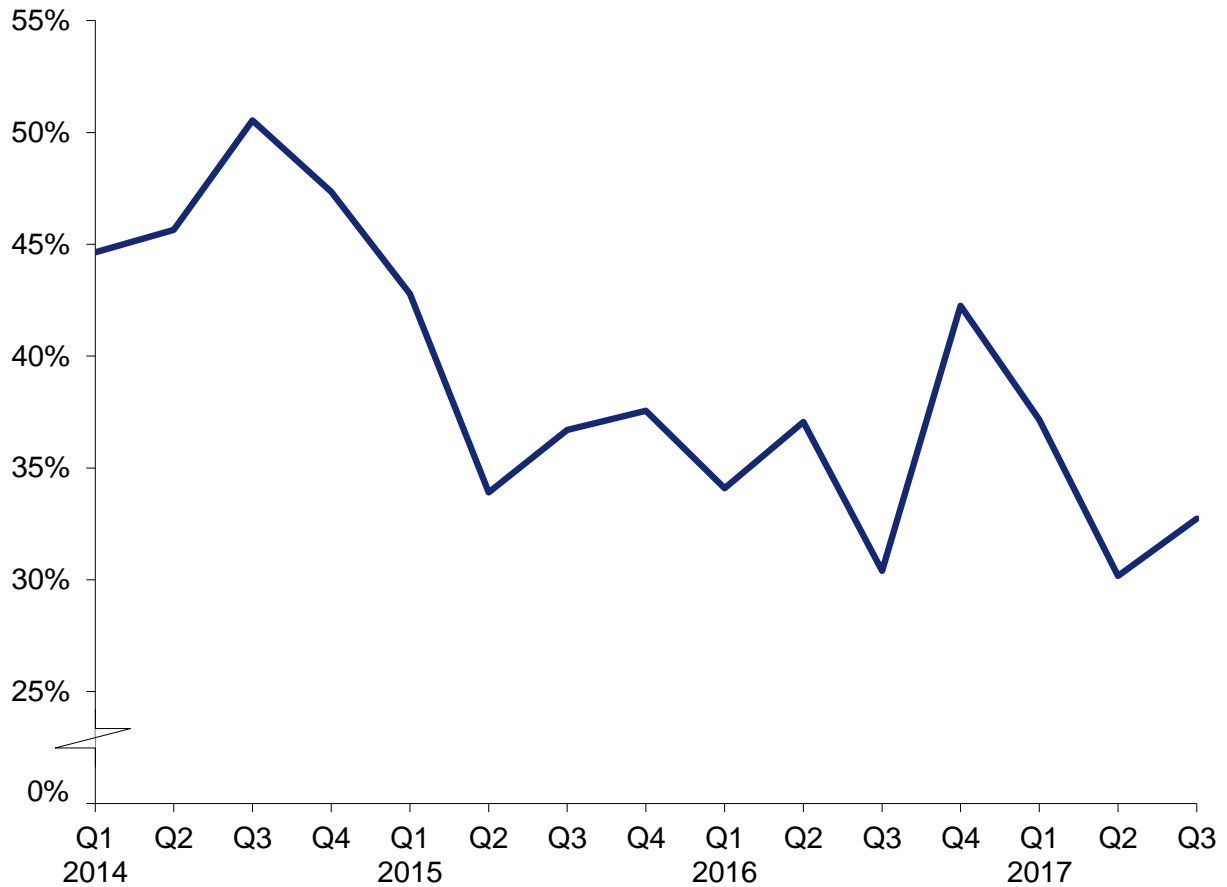
Unadjusted domestic consumption rose by 8.5 per cent over this same period, and was up 3.0 per cent on a seasonally and temperature adjusted basis.

Consumption data by fuel and sector is available in table ET 1.3c which is now included within this publication as well as on the BEIS section of the GOV.UK website at:

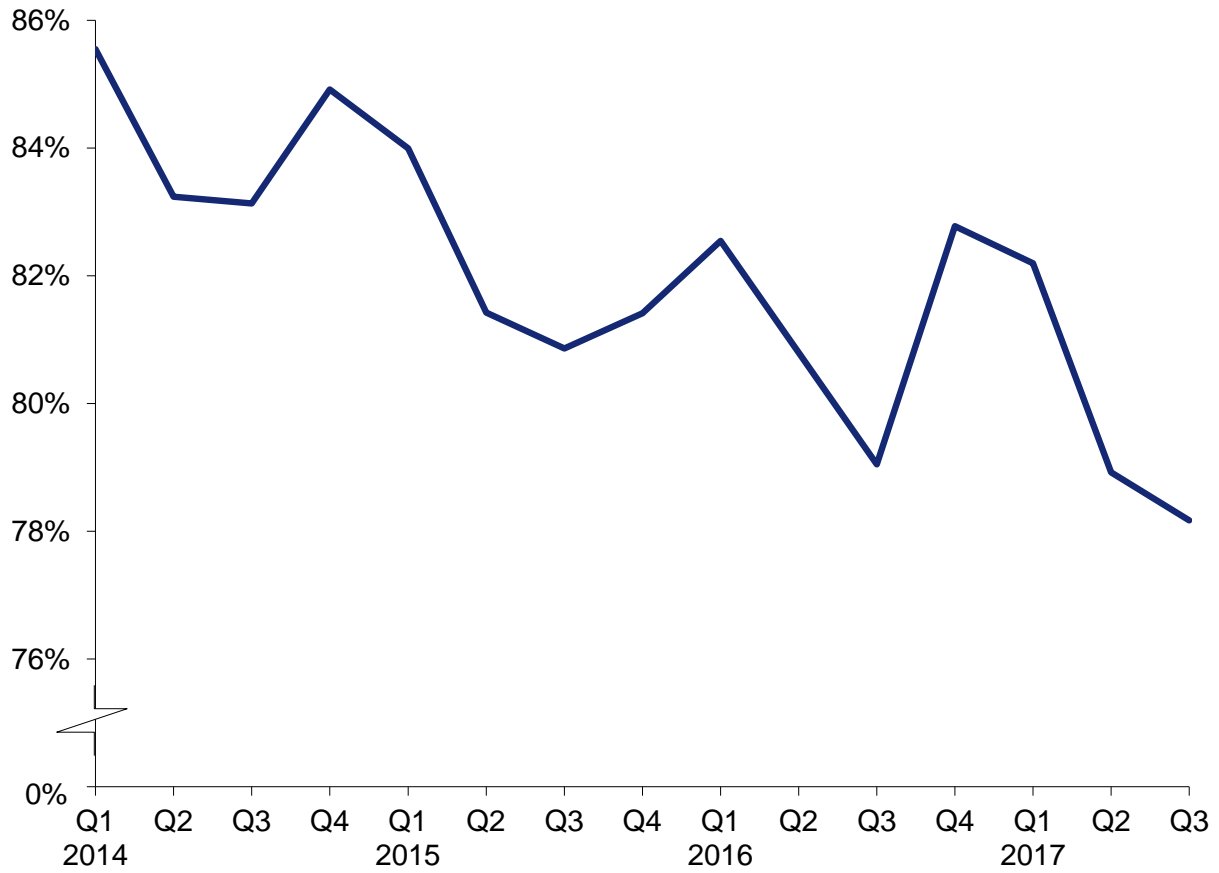
www.gov.uk/government/statistics/total-energy-section-1-energy-trends

Total Energy

Chart 1.6 Net import dependency ([Table 1.3a](#))



In the third quarter of 2017 net import dependency was 32.7 per cent, up 2.3 percentage points from the third quarter of 2016, driven by increases in crude oil and gas imports.

Chart 1.7 Fossil fuel dependency ([Table 1.3a](#))

In the third quarter of 2017 dependency on fossil fuels was 78.2 per cent, down 0.9 percentage points from the third quarter of 2016, and at a record low level.

1 TOTAL ENERGY

TABLE 1.1. Indigenous production of primary fuels

Million tonnes of oil equivalent

							Primary electricity	
		Total	Coal ¹	Petroleum ²	Natural gas ³	Bioenergy & waste ^{4,5}	Nuclear	Wind, solar and hydro ⁶
2012		121.3	10.6	48.8	37.4	7.0	15.2	2.28
2013		113.9	8.0	44.5	35.3	7.7	15.4	3.02
2014		112.5	7.3	43.7	35.8	8.3	13.9	3.60
2015		123.7	5.4	49.5	38.8	9.8	15.5	4.66
2016		125.1	2.6	52.0	39.8	10.8	15.4	4.57
<i>Per cent change</i>		<i>+1.2</i>	<i>-51.1</i>	<i>+4.9</i>	<i>+2.4</i>	<i>+10.4</i>	<i>-0.4</i>	<i>-1.8</i>
2016	Quarter 3	29.5	0.6	12.3	9.5	1.8	4.1	1.13
	Quarter 4	32.0	0.7	12.6	10.5	3.1	4.1	1.11
2017	Quarter 1	33.4r	0.6r	13.3r	10.7r	3.6r	3.8	1.41r
	Quarter 2	31.5r	0.4r	13.1r	10.3r	2.5r	3.8	1.34r
	Quarter 3 p	28.6r	0.5	12.3r	8.5r	2.2r	3.9	1.26r
<i>Per cent change</i> ⁷		<i>-2.8</i>	<i>-29.8</i>	<i>-0.4</i>	<i>-10.7</i>	<i>+24.4</i>	<i>-3.6</i>	<i>+11.9</i>

1. Includes an estimate of slurry.

2. Crude oil, offshore and land, plus condensates and petroleum gases derived at onshore treatment plants.

3. Includes colliery methane, excludes gas flared or re-injected.

4. Includes solid renewable sources (wood, straw and waste), a small amount of renewable primary heat sources (solar, geothermal etc), liquid biofuels and sewage gas and landfill gas.

5. Bioenergy & waste introduced as a separate category from March 2014 - see special feature article in the March 2014 edition of Energy Trends at:

www.gov.uk/government/collections/energy-trends-articles

6. Includes solar PV and natural flow hydro.

7. Percentage change between the most recent quarter and the same quarter a year earlier.

1 TOTAL ENERGY

TABLE 1.2 Inland energy consumption: primary fuel input basis

Million tonnes of oil equivalent

	Unadjusted ⁷									Seasonally adjusted and temperature corrected ^{8,9} (annualised rates)								
	Total	Coal ¹	Petroleum ²	Natural gas ³	Bioenergy & waste ^{4,5}	Primary electricity			Net imports	Total	Coal	Petroleum	Natural gas	Bioenergy & waste	Primary electricity			Net imports
						Nuclear	Wind, solar and hydro ⁶								Nuclear	Wind, solar and hydro		
2012	208.1	40.9	67.0	73.3	8.4	15.2	2.28	1.02		208.2	41.0	67.0	73.3	8.4	15.2	2.28	1.02	
2013	206.8	39.0	65.8	72.6	9.6	15.4	3.02	1.24		204.0	38.3	65.8	70.5	9.6	15.4	3.03	1.24	
2014	194.0	31.5	66.0	66.1	11.2	13.9	3.60	1.76		199.3	33.1	66.0	69.9	11.2	13.9	3.61	1.76	
2015	195.5	25.1	67.3	68.1	13.1	15.5	4.66	1.80		198.3	25.6	67.3	70.5	13.1	15.5	4.66	1.80	
2016	192.8	12.4	68.0	76.7	14.2	15.4	4.57	1.51		193.7	12.6	68.0	77.4	14.2	15.4	4.57	1.51	
<i>Per cent change</i>	<i>-1.4</i>	<i>-50.5</i>	<i>+1.1</i>	<i>+12.6</i>	<i>+8.2</i>	<i>-0.4</i>	<i>-1.8</i>	<i>-16.2</i>		<i>-2.3</i>	<i>-50.7</i>	<i>+1.1</i>	<i>+9.9</i>	<i>+8.2</i>	<i>-0.4</i>	<i>-1.8</i>	<i>-16.2</i>	
2016																		
Quarter 3	39.5	1.9	17.2	12.1	2.7	4.1	1.13	0.40		188.5	10.7	68.9	74.8	10.7	16.3	5.43	1.61	
Quarter 4	53.2	3.3	17.3	23.4	3.9	4.1	1.11	0.13		198.7	11.7	69.4	81.6	15.5	16.1	3.90	0.52	
2017																		
Quarter 1	55.0r	3.7r	16.5r	24.9r	4.4r	3.8	1.41r	0.22r		196.2r	12.4r	66.1r	79.5r	17.5r	15.0	4.88r	0.89r	
Quarter 2	42.6r	1.6r	17.1r	14.9r	3.3r	3.8	1.34r	0.45		188.8r	8.6r	68.4r	74.9r	13.4r	15.6	6.14r	1.80	
Quarter 3 p	40.0r	1.6r	17.4r	12.2r	3.1r	3.9	1.26r	0.46		189.9r	8.4r	69.7r	75.7r	12.4r	15.7	6.14r	1.83	
<i>Per cent change</i> ¹⁰	<i>+1.3</i>	<i>-15.4</i>	<i>+1.1</i>	<i>+1.4</i>	<i>+15.7</i>	<i>-3.6</i>	<i>+11.9</i>	<i>+13.7</i>		<i>+0.7</i>	<i>-20.8</i>	<i>+1.1</i>	<i>+1.2</i>	<i>+15.7</i>	<i>-4.0</i>	<i>+13.0</i>	<i>+13.7</i>	

1. Includes net foreign trade and stock changes in other solid fuels.

2. Inland deliveries for energy use, plus refinery fuel and losses, minus the differences between deliveries and actual consumption at power stations

3. Includes gas used during production and colliery methane. Excludes gas flared or re-injected and non-energy use of gas.

4. Includes solid renewable sources (wood, straw and waste), a small amount of renewable primary heat sources (solar, geothermal, etc.), liquid biofuels, landfill gas and sewage gas.

5. Bioenergy & waste introduced as a separate category from March 2014 - see special feature article in the March 2014 edition of Energy Trends at:

www.gov.uk/government/collections/energy-trends-articles

6. Includes natural flow hydro, but excludes generation from pumped storage stations.

7. Not seasonally adjusted or temperature corrected.

8. Coal and natural gas are temperature corrected; petroleum, bioenergy and waste, and primary electricity are not temperature corrected.

9. For details of temperature correction see the June and September 2011 editions of Energy Trends; Seasonal and temperature adjustment factors were reassessed in June 2013

www.gov.uk/government/collections/energy-trends

10. Percentage change between the most recent quarter and the same quarter a year earlier.

1 TOTAL ENERGY

Table 1.3a Supply and use of fuels

Thousand tonnes of oil equivalent

	2015	2016	per cent change	2015 3rd quarter	2015 4th quarter	2016 1st quarter	2016 2nd quarter	2016 3rd quarter	2016 4th quarter	2017 1st quarter	2017 2nd quarter	2017 3rd quarter	per cent change ¹
SUPPLY													
Indigenous production	123,673	125,135	+1.2	27,244	32,859	33,204	30,435	29,456	32,039	33,404r	31,481r	28,623	-2.8
Imports	155,134	149,687	-3.5	36,326	40,183	39,606	35,487	33,359	41,236	39,557r	34,477r	35,716	+7.1
Exports	-76,644	-75,763	-1.1	-20,225	-19,924	-19,510	-18,174	-20,473	-17,606	-18,191r	-20,843r	-21,705	+6.0
Marine bunkers	-2,684	-2,840	+5.8	-734	-611	-574	-777	-816	-674	-545r	-639r	-779	-4.4
Stock change ²	+3,907	+4,907	+25.6	+534	+819	+5,649	-1,028	+37	+250	+2,735r	+71r	+177	(+)
Primary supply	203,387	201,125	-1.1	43,146	53,327	58,375	45,943	41,563	55,244	56,959r	44,546r	42,032	+1.1
Statistical difference ³	113	32		-66	43	128	-28	-47	-21	-70r	86r	41	
Primary demand	203,274	201,093	-1.1	43,212	53,283	58,248	45,971	41,611	55,265	57,029r	44,461r	41,991	+0.9
Transfers ⁴	32	-14		35	-4	-5	-1	-2	-7	-9	35	-15	
TRANSFORMATION													
Electricity generation	-41,329	-37,404	-9.5	-9,117	-10,492	-10,531	-8,497	-8,242	-10,134	-10,180r	-8,147r	-8,033	-2.5
Heat generation	-37,543	-34,214	-8.9	-8,326	-9,648	-9,687	-7,736	-7,483	-9,309	-9,301r	-7,416r	-7,381	-1.4
Petroleum refineries	-1,088	-1,152	+5.9	-209	-287	-357	-256	-215	-324	-357	-256	-215	+0.0
Coke manufacture	-152	-81	+2.2	-29	-20	-27	-39	-70	-20	-52	-6r	-35	-49.7
Blast furnaces	-156	-81	-48.0	-38	-24	-20	-20	-21	-20	-23	-20	-21	-2.2
Blast furnaces	-2,277	-1,692	-25.7	-485	-480	-407	-425	-432	-428	-418	-419	-363	-16.2
Patent fuel manufacture	-68	-64	-6.8	-18	-21	-21	-11	-10	-22	-19r	-19r	-9	-13.5
Other ⁵	-44	-46	+3.5	-12	-12	-12	-11	-11	-11	-11	-11	-9	-13.2
Energy industry use	12,485	11,881	-4.8	3,030	3,179	3,131	2,947	2,853	2,950	3,089r	3,046r	3,001	+5.2
Losses	3,133	2,823	-9.9	656	852	870	666	595	692	868r	631r	596	+0.1
FINAL CONSUMPTION													
Iron & steel	146,360	148,971	+1.8	30,441	38,755	43,714	33,861	29,914	41,482	42,884r	32,673r	30,343	+1.4
Iron & steel	1,262	946	-25.0	294	261	246	238	229	234	252r	230r	216	-5.3
Other industries	23,099	22,784	-1.4	4,907	6,107	6,952	4,984	4,754	6,094	6,971r	5,046r	4,722	-0.7
Transport	54,749	55,767	+1.9	14,321	13,734	12,998	14,210	14,558	14,002	13,045r	14,256r	14,603	+0.3
Domestic	40,046	41,295	+3.1	4,996	11,321	15,765	7,804	4,483	13,242	15,054r	6,939r	4,864	+8.5
Other Final Users	19,344	19,875	+2.7	3,950	5,207	5,729	4,493	3,789	5,864	5,562r	4,226r	3,890	+2.7
Non energy use	7,859	8,303	+5.7	1,973	2,125	2,024	2,132	2,102	2,045	2,001r	1,975r	2,047	-2.6
DEPENDENCY⁶													
Net import dependency	38.1%	36.2%		36.7%	37.6%	34.1%	37.1%	30.4%	42.3%	37.2%r	30.2%r	32.7%	
Fossil fuel dependency	82.1%	81.5%		80.9%	81.4%	82.5%	80.8%	79.1%	82.8%	82.2%r	78.9%r	78.2%	
Low carbon share	16.5%	17.0%		17.3%	17.3%	16.0%	17.4%	19.1%	16.4%	16.8%r	19.3%r	19.9%	

1. Percentage change between the most recent quarter and the same quarter a year earlier; (+) represents a positive percentage change greater than 100%.

2. Stock change + = stock draw, - = stock build.

3. Primary supply minus primary demand.

4. Annual transfers should ideally be zero. For manufactured fuels differences occur in the rescreening of coke to breeze.

For oil and petroleum products differences arise due to small variations in the calorific values used.

5. Back-flows from the petrochemical industry - see article in the June 2016 edition of Energy Trends.

6. See article in the December 2010 edition of Energy Trends.

1 TOTAL ENERGY

Table 1.3b Supply and use of fuels

Thousand tonnes of oil equivalent

	2016 Quarter 3									2017 Quarter 3 p								
	Coal	Manufactured fuels ⁴	Primary oil	Petroleum Products	Natural gas ⁵	Bioenergy & waste ⁶	Primary electricity	Electricity	Heat sold	Coal	Manufactured fuels ⁴	Primary oil	Petroleum Products	Natural gas ⁵	Bioenergy & waste ⁶	Primary electricity	Electricity	Heat sold
SUPPLY																		
Indigenous production	647	-	12,346	-	9,501	1,781	5,181	-	-	454	-	12,300	-	8,487	2,215	5,167	-	-
Imports	1,146	202	13,481	9,378	7,734	992	-	426	-	1,293	184	15,364	8,916	8,500	986	-	472	-
Exports	-103	-4	-9,013	-6,770	-4,470	-90	-	-23	-	-106	-3	-10,594	-6,336	-4,554	-97	-	-14	-
Marine bunkers	-	-	-	-816	-	-	-	-	-	-	-	-	-779	-	-	-	-	-
Stock change ¹	+23	-10	+105	+504	-584	-	-	-	-	-197	-18	+207	+274	-88	-	-	-	-
Primary supply	1,713	187	16,919	2,297	12,181	2,684	5,181	403	-	1,445	163	17,276	2,074	12,346	3,104	5,167	458	-
Statistical difference ²	-52	+1	+1	-9	+2	+0	-	+10	-	-9	+1	+1	+0	+35	-	-	+13	-
Primary demand	1,765	186	16,918	2,306	12,179	2,684	5,181	392	-	1,454	162	17,275	2,074	12,310	3,104	5,167	445	-
Transfers ³	-	5	-277	+275	+39	-45	-1,128	+1,128	-	-	+2	-528	+514	58	-61	-1,262	+1,262	-
TRANSFORMATION	-1,414	64	-16,641	16,401	-6,308	-1,908	-4,053	5,353	263	-1,147	82	-16,747	16,551	-5,915	-2,297	-3,905	5,083	263
Electricity generation	-741	-129	-	-129	-5,882	-1,902	-4,053	5,353	-	-538	-121	-	-119	-5,489	-2,291	-3,905	5,083	-
Heat generation	-18	-13	-	-15	-426	-6	-	-	263	-18	-13	-	-15	-426	-6	-	-	263
Petroleum refineries	-	-	-16,751	16,681	-	-	-	-	-	-	-	-16,857	16,822	-	-	-	-	-
Coke manufacture	-353	332	-	-	-	-	-	-	-	-360	340	-	-	-	-	-	-	-
Blast furnaces	-263	-169	-	-	-	-	-	-	-	-206	-157	-	-	-	-	-	-	-
Patent fuel manufacture	-39	44	-	-15	-	-	-	-	-	-25	33	-	-17	-	-	-	-	-
Other ⁷	-	-	110	-120	-	-	-	-	-	-	-	110	-119	-	-	-	-	-
Energy industry use	-	99	-	1,010	1,196	-	-	480	68	-	100	-	1,103	1,252	-	-	478	68
Losses	-	27	-	-	141	-	-	427	-	-	29	-	-	112	-	-	456	-
FINAL CONSUMPTION	351	129	-	17,973	4,574	730	-	5,966	192	307	118	-	18,036	5,089	747	-	5,855	192
Iron & steel	5	79	-	0	84	-	-	61	-	6	74	-	0	77	-	-	59	-
Other industries	261	-	-	924	1,304	220	-	1,892	153	217	-	-	924	1,360	228	-	1,841	153
Transport	3	-	-	14,187	-	268	-	100	-	3	-	-	14,261	-	239	-	100	-
Domestic	77	39	-	346	1,986	154	-	1,877	4	77	33	-	383	2,289	180	-	1,898	4
Other final users	6	-	-	534	1,090	88	-	2,036	35	5	-	-	542	1,253	100	-	1,957	35
Non energy use	-	11	-	1,981	110	-	-	-	-	-	10	-	1,926	110	-	-	-	-

1. Stock fall +, stock rise -.

2. Primary supply minus primary demand.

3. Annual transfers should ideally be zero. For manufactured fuels differences occur in the rescreening of coke to breeze. For oil and petroleum products differences arise due to small variations in the calorific values used.

4. Includes all manufactured solid fuels, benzole, tars, coke oven gas and blast furnace gas.

5. Includes colliery methane.

6. Includes geothermal, solar heat and biofuels for transport; wind and wave electricity included in primary electricity figures.

7. Back-flows from the petrochemical industry - see article in the June 2016 edition of Energy Trends.

1 Total Energy

Table 1.3c Seasonally adjusted and temperature corrected final energy consumption data¹

Thousand tonnes of oil equivalent													
	2015	2016	per cent change	2015 3rd quarter	2015 4th quarter	2016 1st quarter	2016 2nd quarter	2016 3rd quarter	2016 4th quarter	2017 1st quarter	2017 2nd quarter	2017 3rd quarter	per cent change ²
By consuming sector													
Final Consumption (unadjusted)													
Industry	24,362	23,730	-2.6	5,202	6,368	7,198	5,221	4,982	6,329	7,223r	5,276r	4,938	-0.9
Transport	54,749	55,767	+1.9	14,321	13,734	12,998	14,210	14,558	14,002	13,045r	14,256r	14,603	+0.3
Domestic	40,046	41,295	+3.1	4,996	11,321	15,765	7,804	4,483	13,242	15,054r	6,939r	4,864	+8.5
Other final users	19,344	19,875	+2.7	3,950	5,207	5,729	4,493	3,789	5,864	5,562r	4,226r	3,890	+2.7
Total	138,501	140,668	+1.6	28,468	36,630	41,690	31,729	27,812	39,437	40,883r	30,698r	28,296	+1.7
Final Consumption (Seasonally and temperature adjusted)³													
Industry	24,597	23,964	-2.6	6,012	6,223	6,066r	5,931r	5,983r	5,983r	6,117r	6,012r	5,886	-1.6
Transport	54,787	55,579	+1.4	13,737	13,664	13,887r	13,909r	13,861r	13,922r	13,835r	14,000r	14,000	+1.0
Domestic	42,233	42,827	+1.4	10,605	10,793	10,813r	10,831r	10,458r	10,724r	10,719r	10,531r	10,776	+3.0
Other final users	19,954	20,437	+2.4	5,007	5,042	5,053r	5,120r	5,148r	5,115r	5,105r	5,044r	5,117	-0.6
Total	141,571	142,807	+0.9	35,361	35,723	35,820r	35,791r	35,451r	35,745r	35,776r	35,586r	35,778	+0.9
By fuel													
Final Consumption (unadjusted)													
Gas	42,023	43,379	+3.2	5,131	11,813	16,717	8,137	4,464	14,061	16,107r	7,251r	4,979	+11.5
Electricity	26,092	26,122	+0.1	6,052	6,705	7,108	6,095	5,966	6,952	6,902r	5,919r	5,855	-1.9
Other	70,385	71,167	+1.1	17,285	18,112	17,864	17,497	17,383	18,423	17,874r	17,527r	17,462	+0.5
Total	138,501	140,668	+1.6	28,468	36,630	41,690	31,729	27,812	39,437	40,883r	30,698r	28,296	+1.7
Final Consumption (Seasonally and temperature adjusted)³													
Gas	44,320	45,175	+1.9	11,175	11,247	11,339r	11,378r	11,082r	11,376r	11,349r	11,191r	11,454	+3.4
Electricity	26,377	26,315	-0.2	6,574	6,554	6,592r	6,566r	6,596r	6,561r	6,514r	6,382r	6,430	-2.5
Other	70,874	71,317	+0.6	17,612	17,921	17,889r	17,847r	17,773r	17,808r	17,914r	18,014r	17,894	+0.7
Total	141,571	142,807	+0.9	35,361	35,723	35,820r	35,791r	35,451r	35,745r	35,776r	35,586r	35,778	+0.9

1. For methodology see articles in Energy Trends (June 2011 and September 2011 editions)

2. Percentage change between the most recent quarter and the same quarter a year earlier.

3. Seasonally and temperature adjusted series revised back to 2016 Q1 in December 2017.