



# PHE Influenza Surveillance graphs

- Influenza activity in the United Kingdom is monitored using a variety of [surveillance systems](#). The [National Influenza Report](#) which interprets the data is published weekly.
- National and subnational outputs from the various surveillance systems are grouped according to the following categories:
  - [Community influenza surveillance](#)
  - [Influenza-like illness GP consultation rates](#)
  - [Influenza-confirmed hospitalisations](#)
  - [All-cause mortality](#)
  - [Microbiological surveillance](#)
  - [Influenza vaccination](#)

Respiratory Diseases Department

Centre for Infectious Disease Surveillance and Control

Public Health England

[respcidsc@phe.gov.uk](mailto:respcidsc@phe.gov.uk)

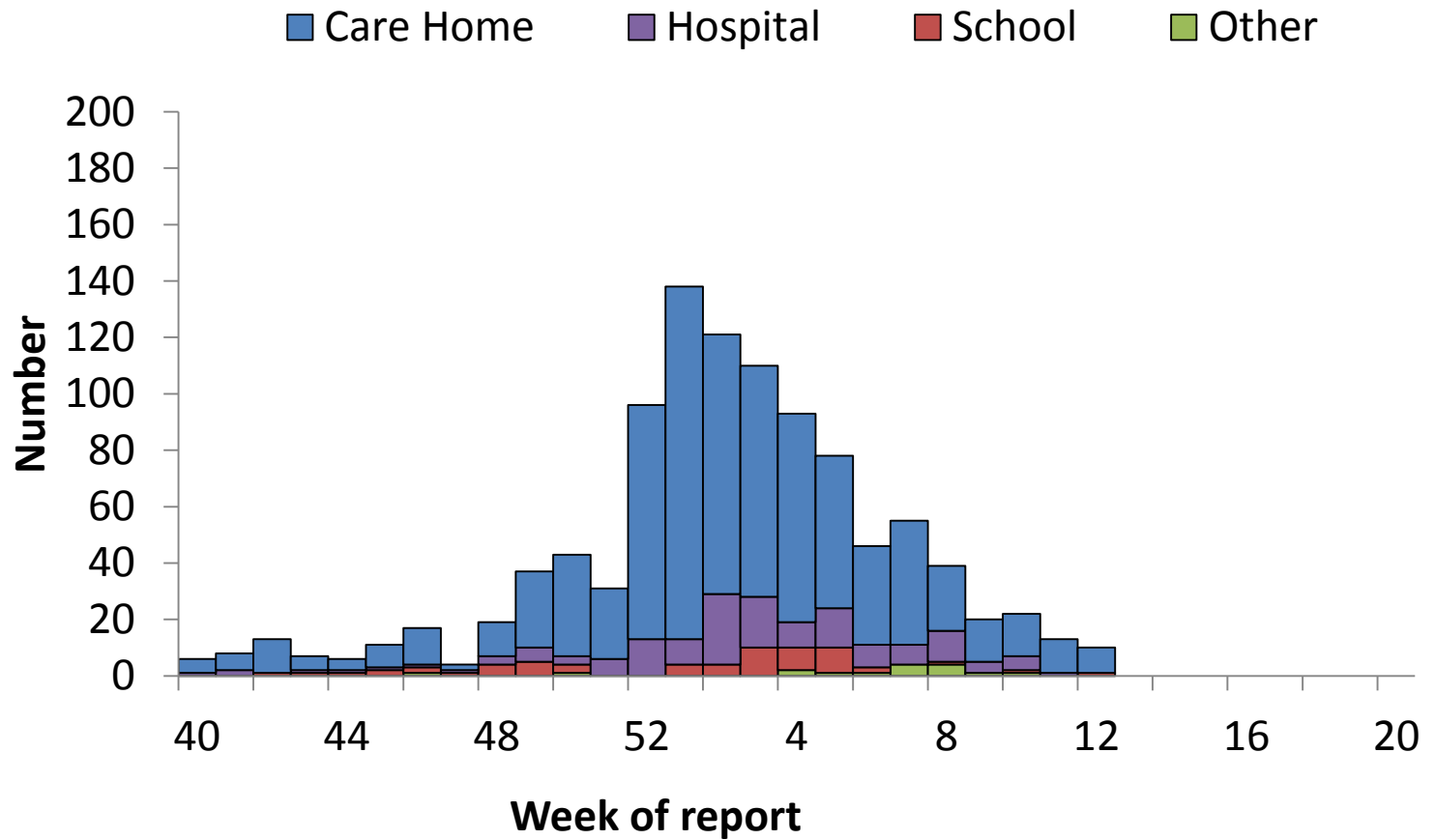


Public Health  
England

# Community influenza surveillance



# Number of acute respiratory outbreaks by institution, UK



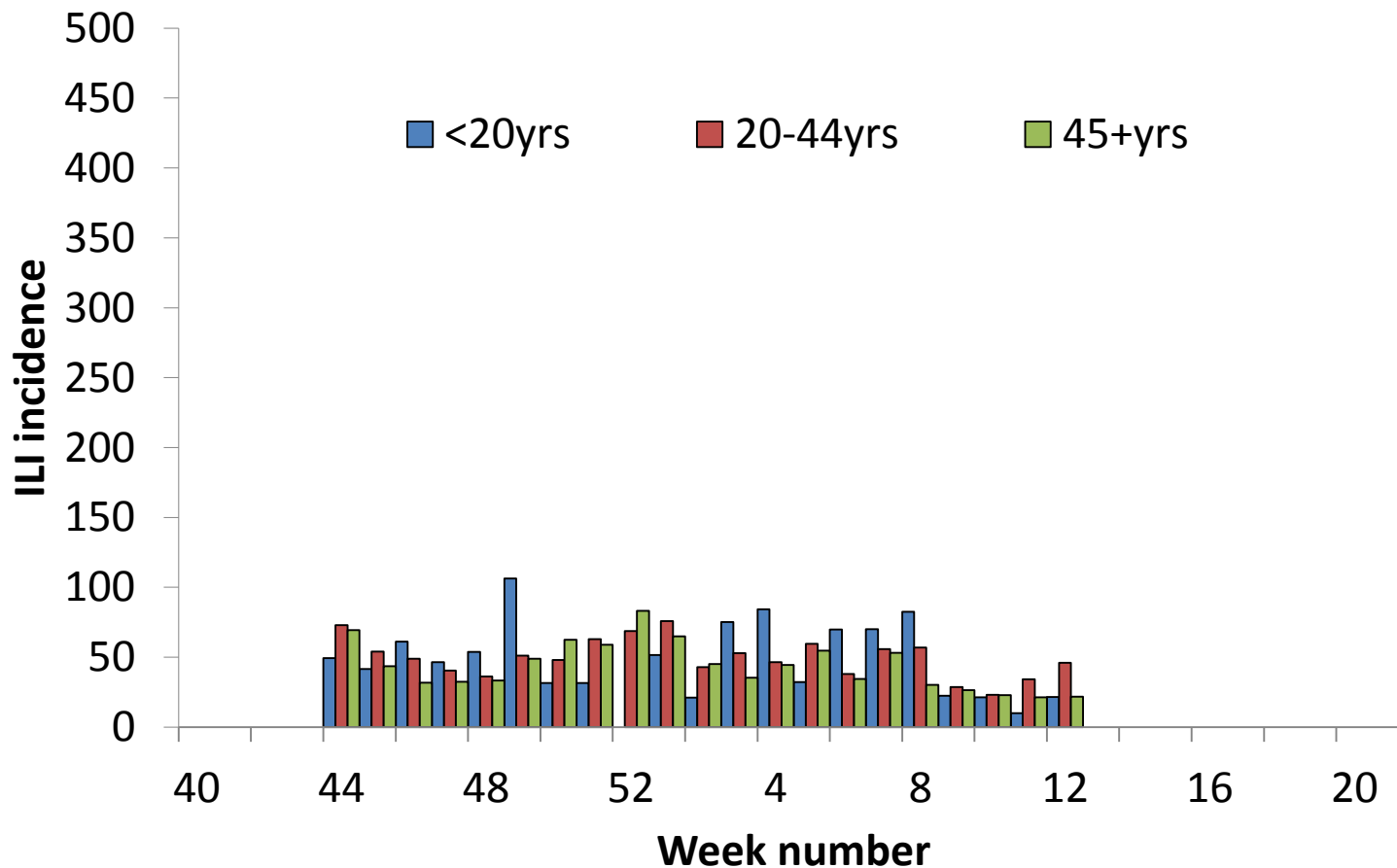


## Outbreaks (table by PHE Region)

	Outbreaks reported in Week 12	Cumulative since Week 40
PHE North of England	5	236
PHE Midlands and East of England	1	351
PHE London	0	57
PHE South of England	3	306



## FluSurvey ILI incidence by age group, UK



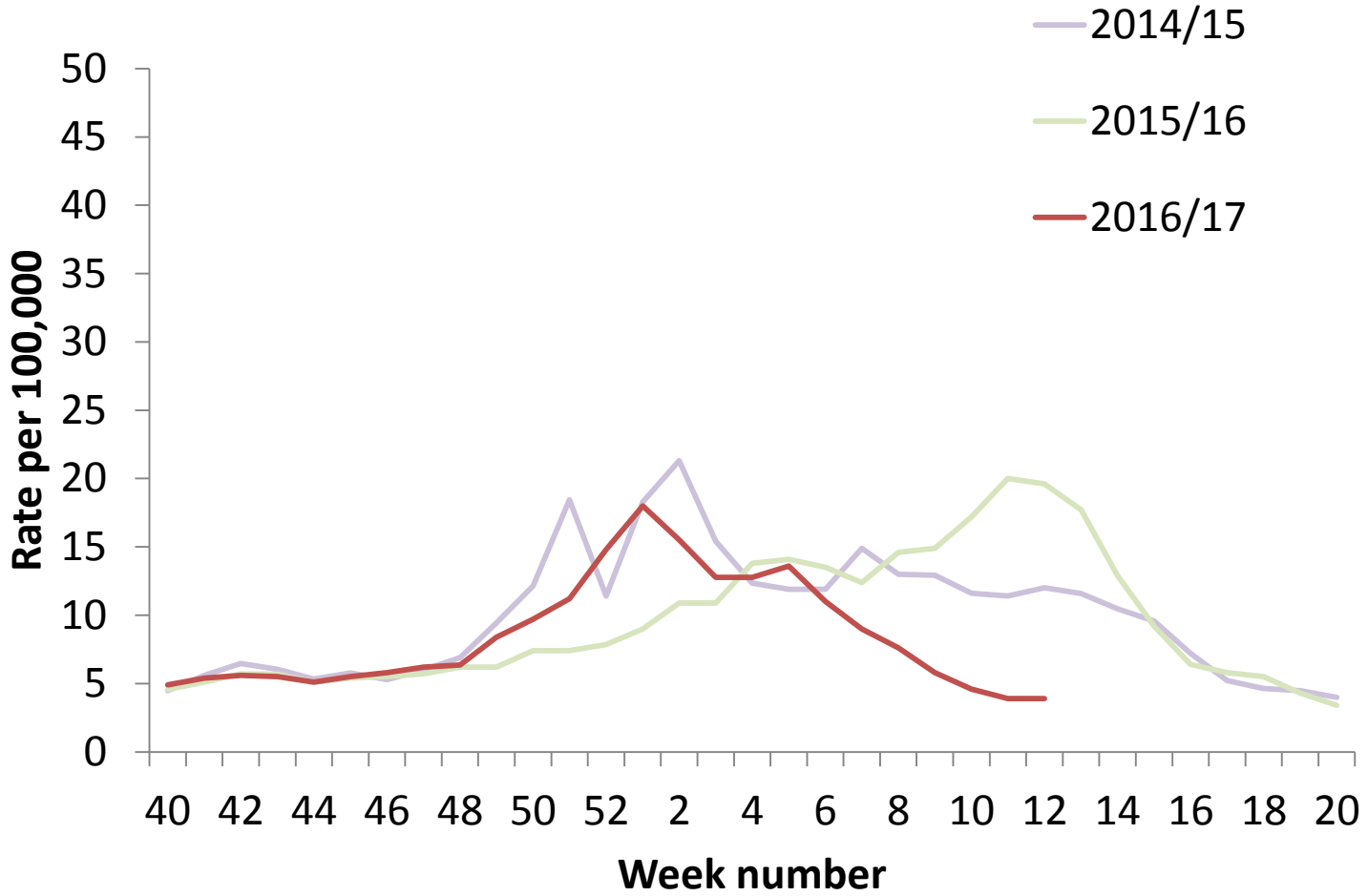
*NB: Data is expected later in the season for FluSurvey*



# Influenza-like illness GP consultation rates

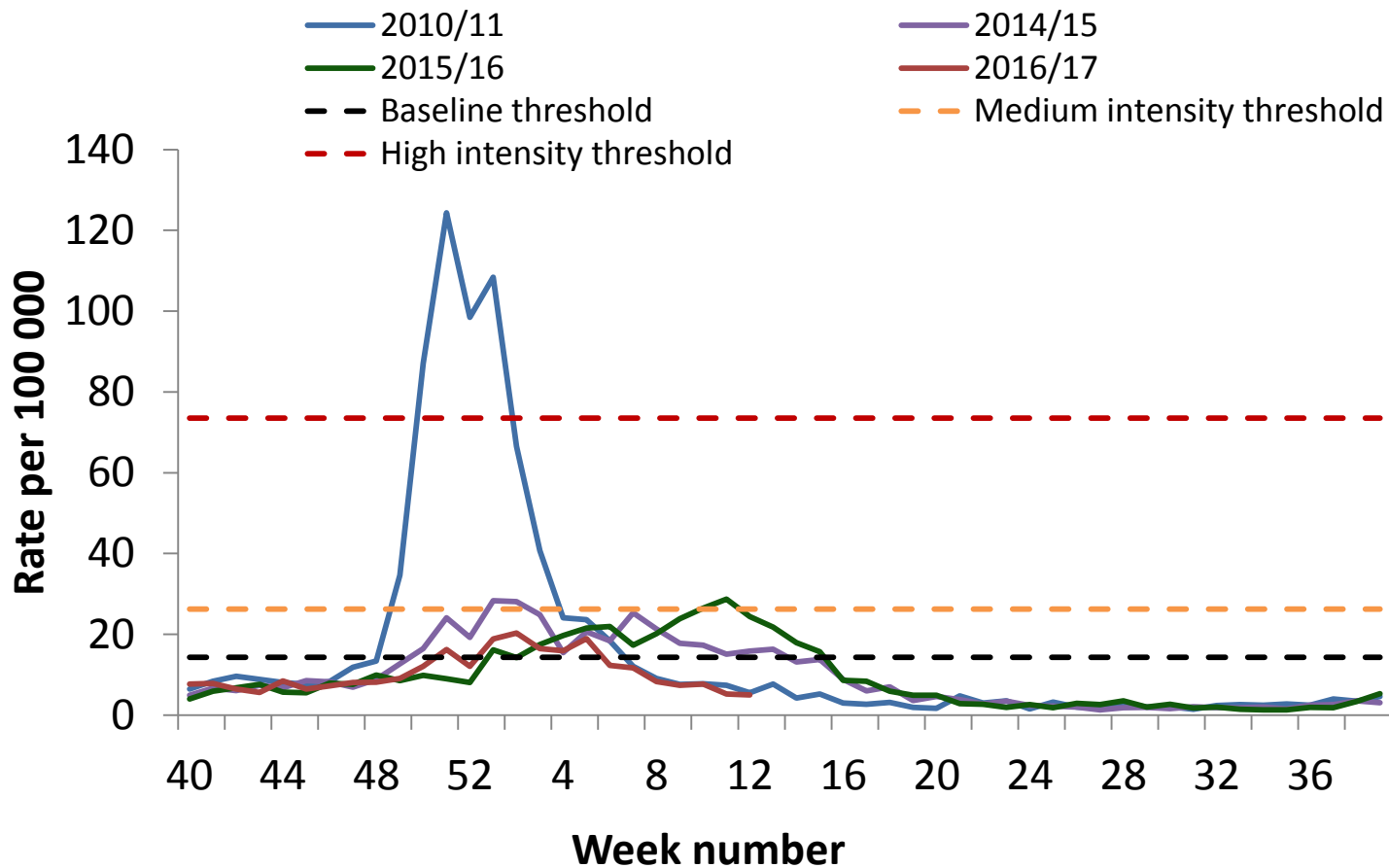


# GP In Hours ILI consultation rate, England





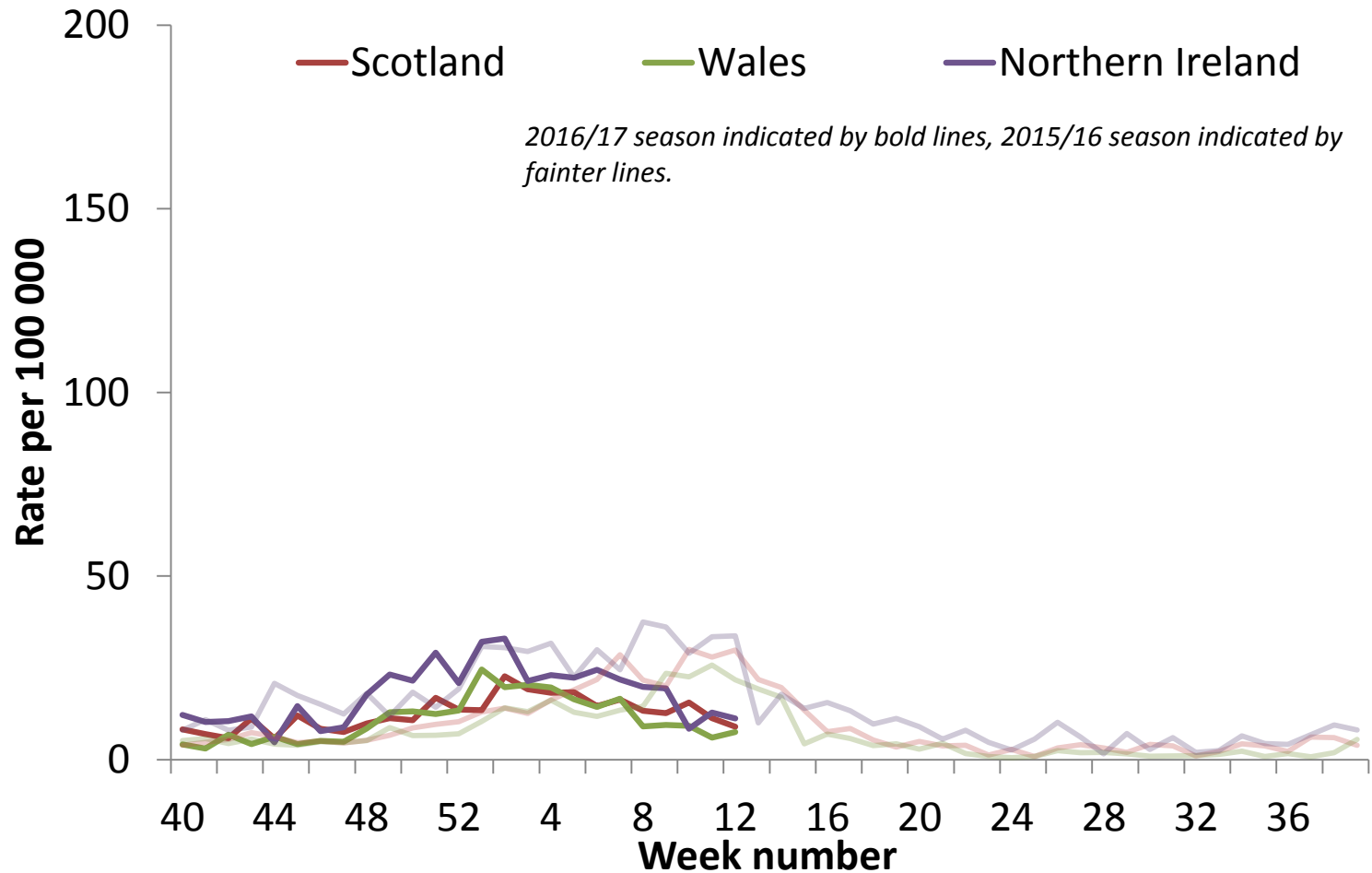
# RCGP ILI consultation rate, England







# ILI/influenza –Scotland, Wales and Northern Ireland



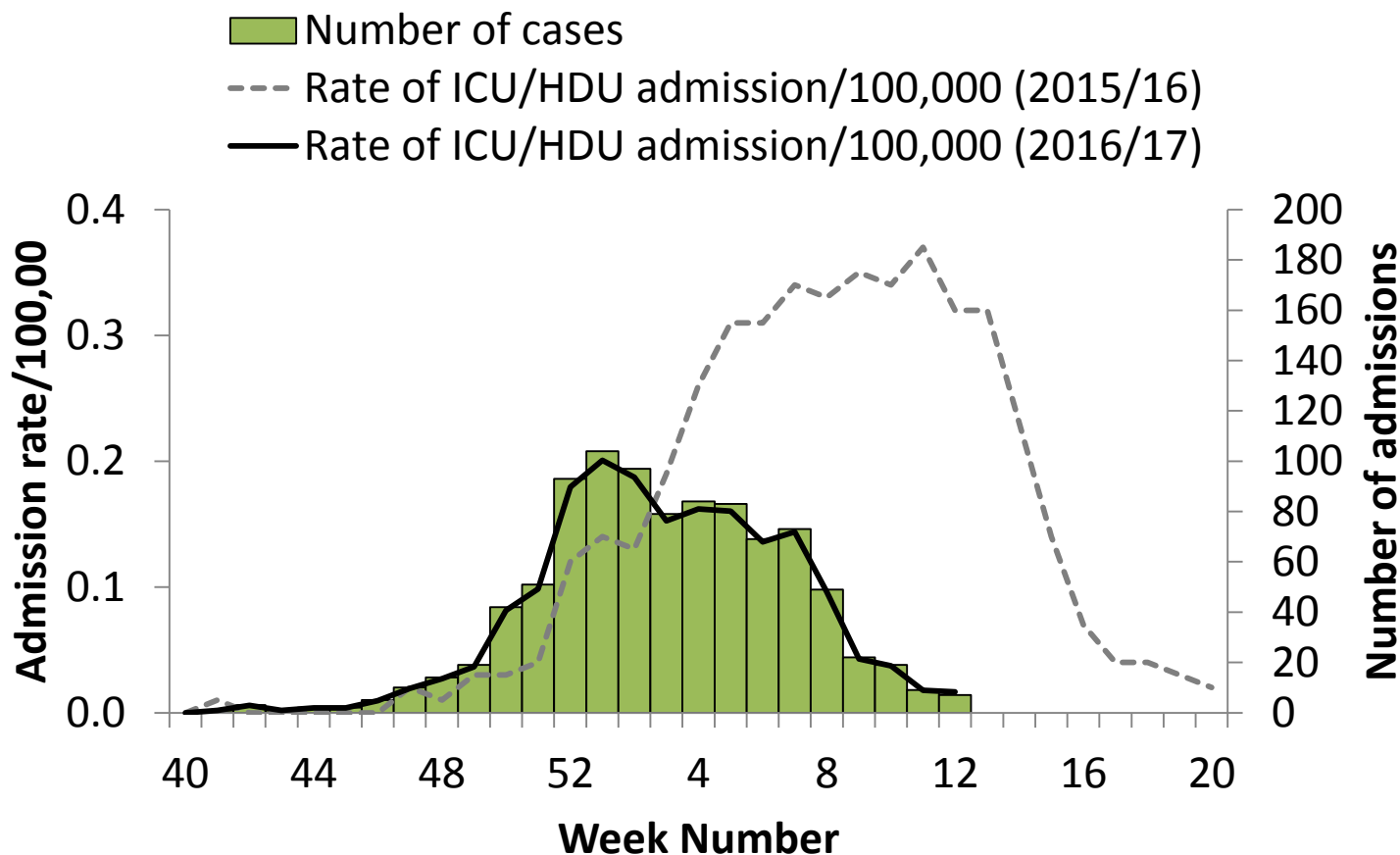
Scottish rates are weekly averages of daily data.



# Influenza-confirmed hospitalisations

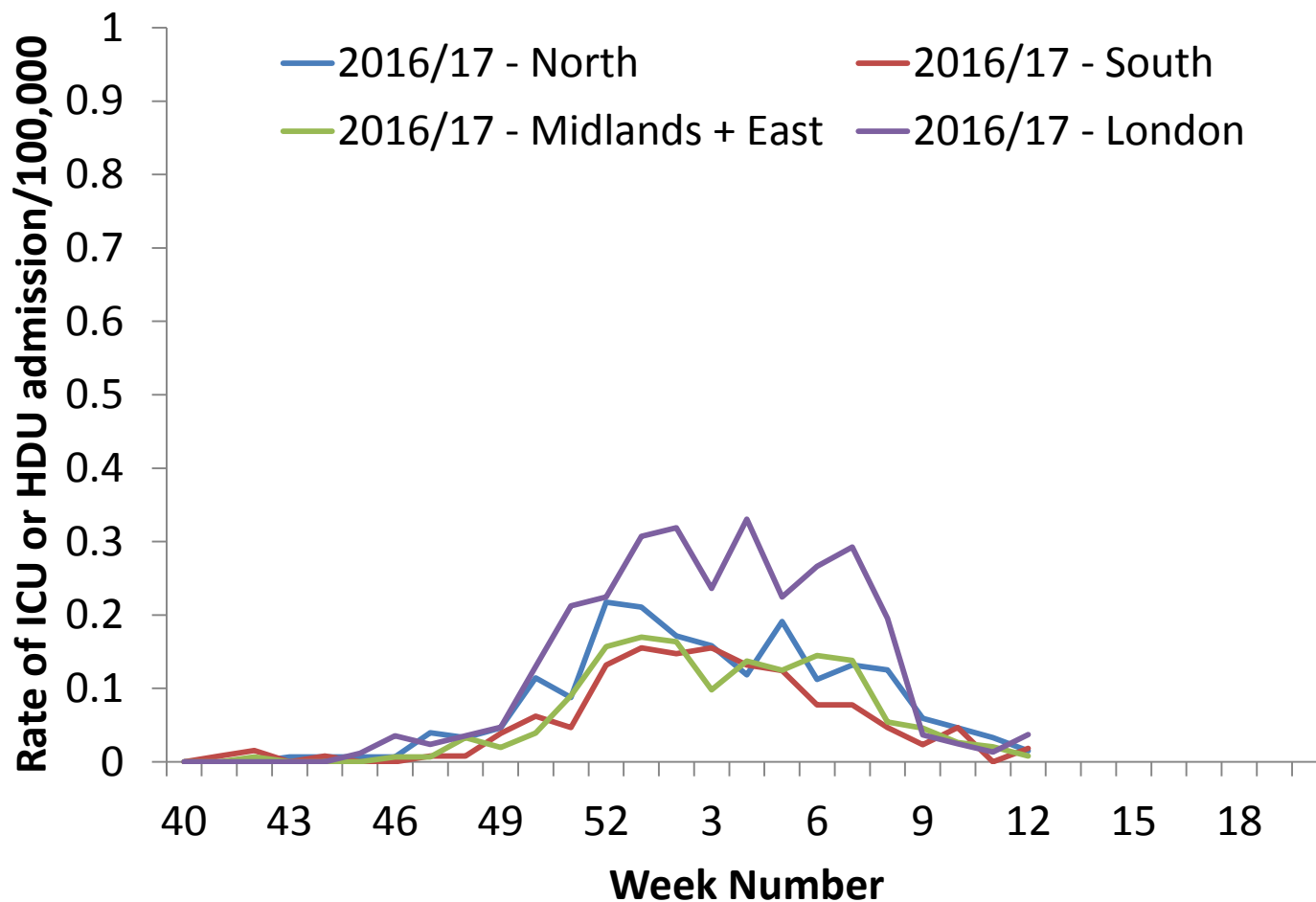


# Weekly ICU/HDU influenza admission rate per 100,000 trust catchment population , England, since week 40 2016



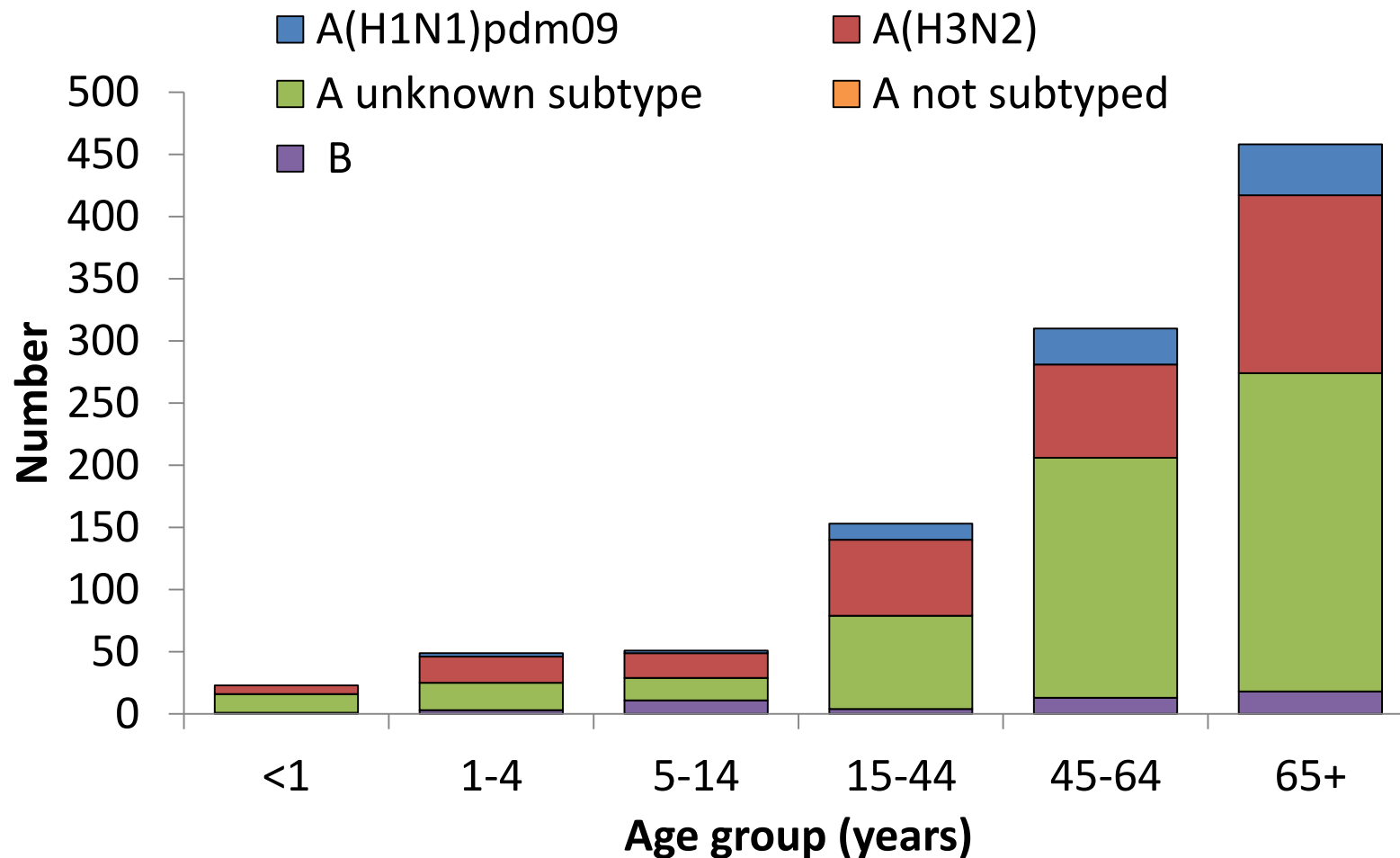


# Weekly ICU/HDU influenza admission rate per 100,000 trust catchment population by PHE region, since week 40 2016



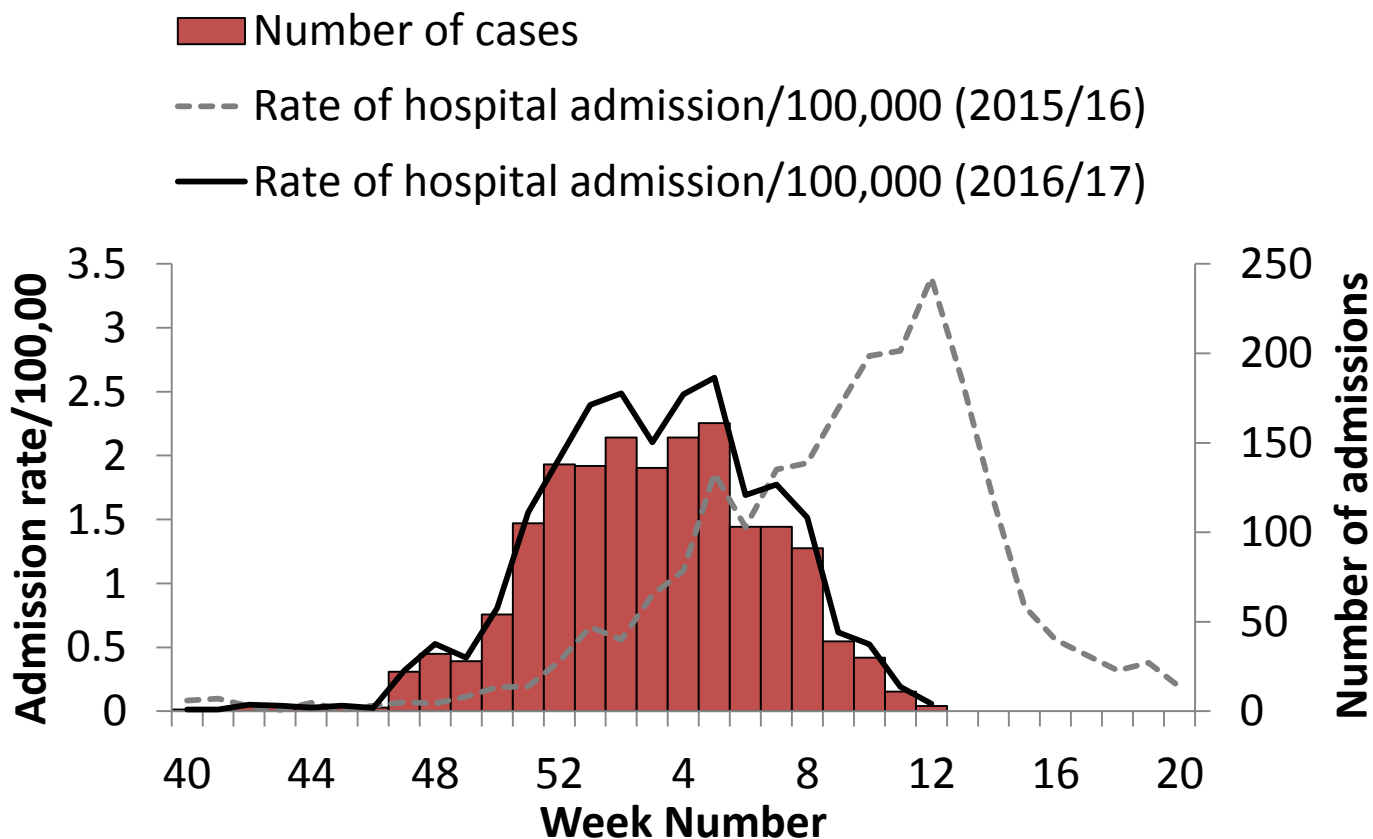


## Influenza confirmed ICU admissions (USISS mandatory) by age and influenza subtype, since week 40 2016



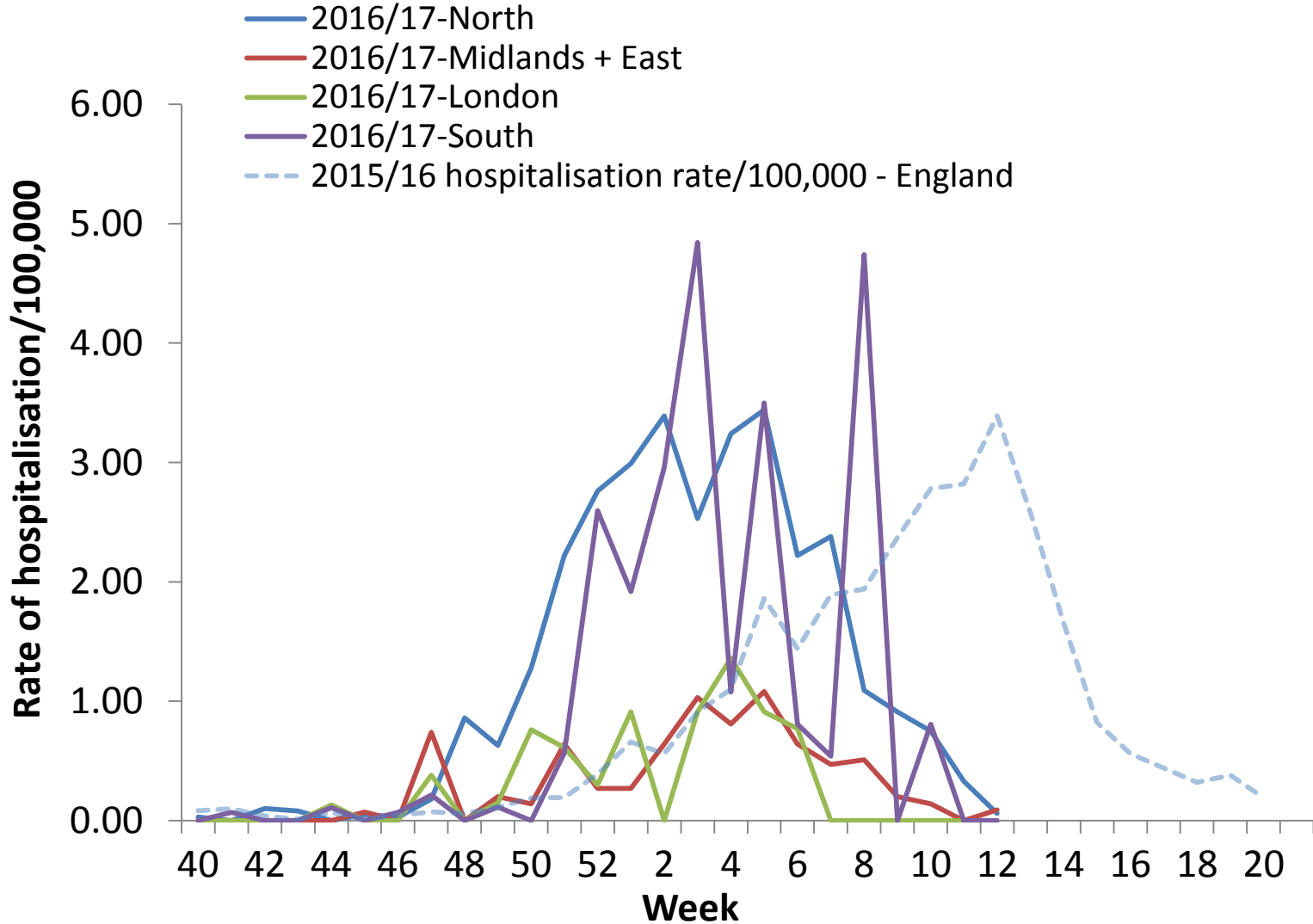


# Weekly hospitalised influenza case rate per 100,000 trust catchment population , England, since week 40 2016





# Weekly hospitalised influenza case rate per 100,000 trust catchment population by PHE Region, since week 40 2016



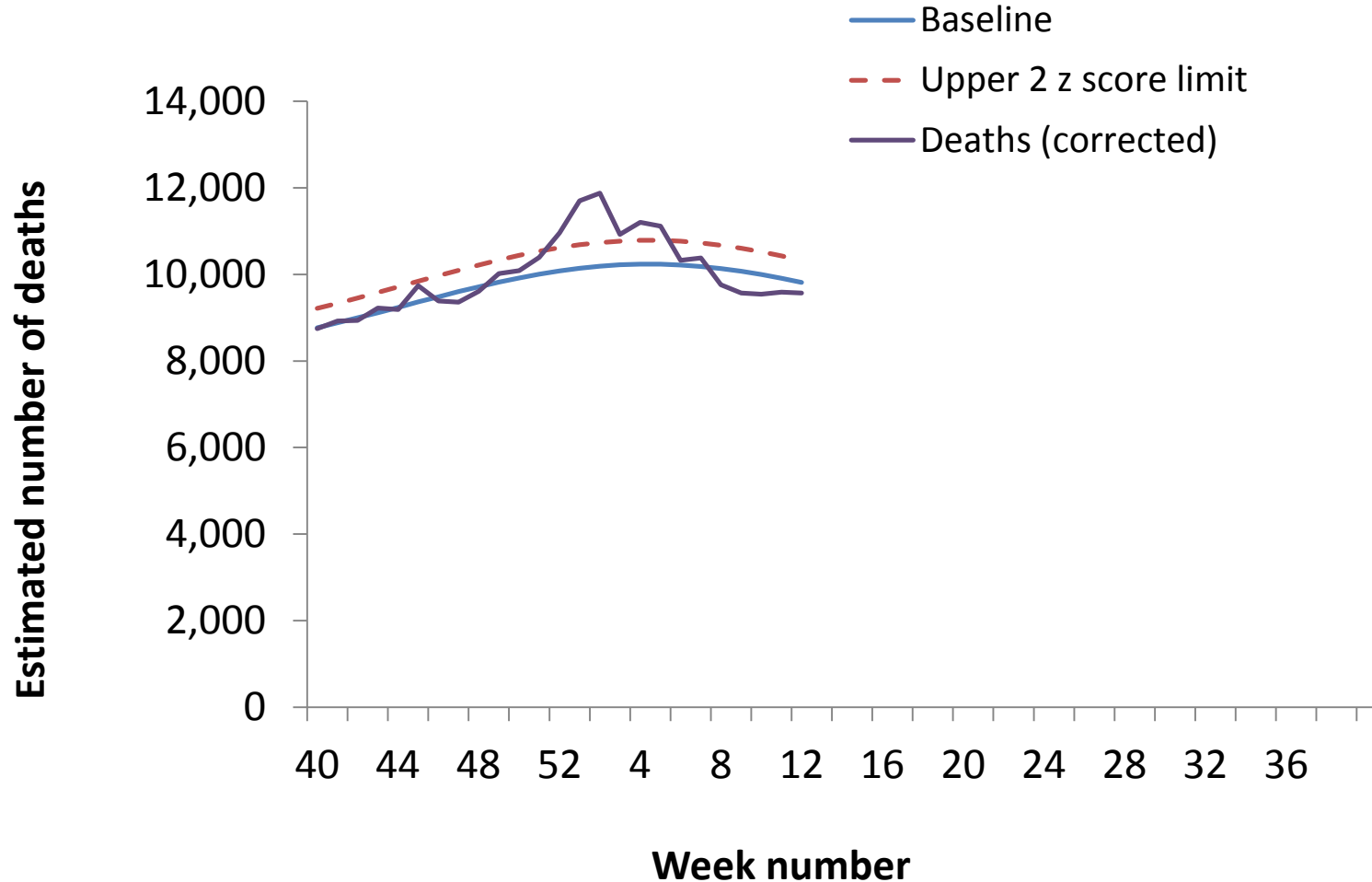


# All-cause mortality



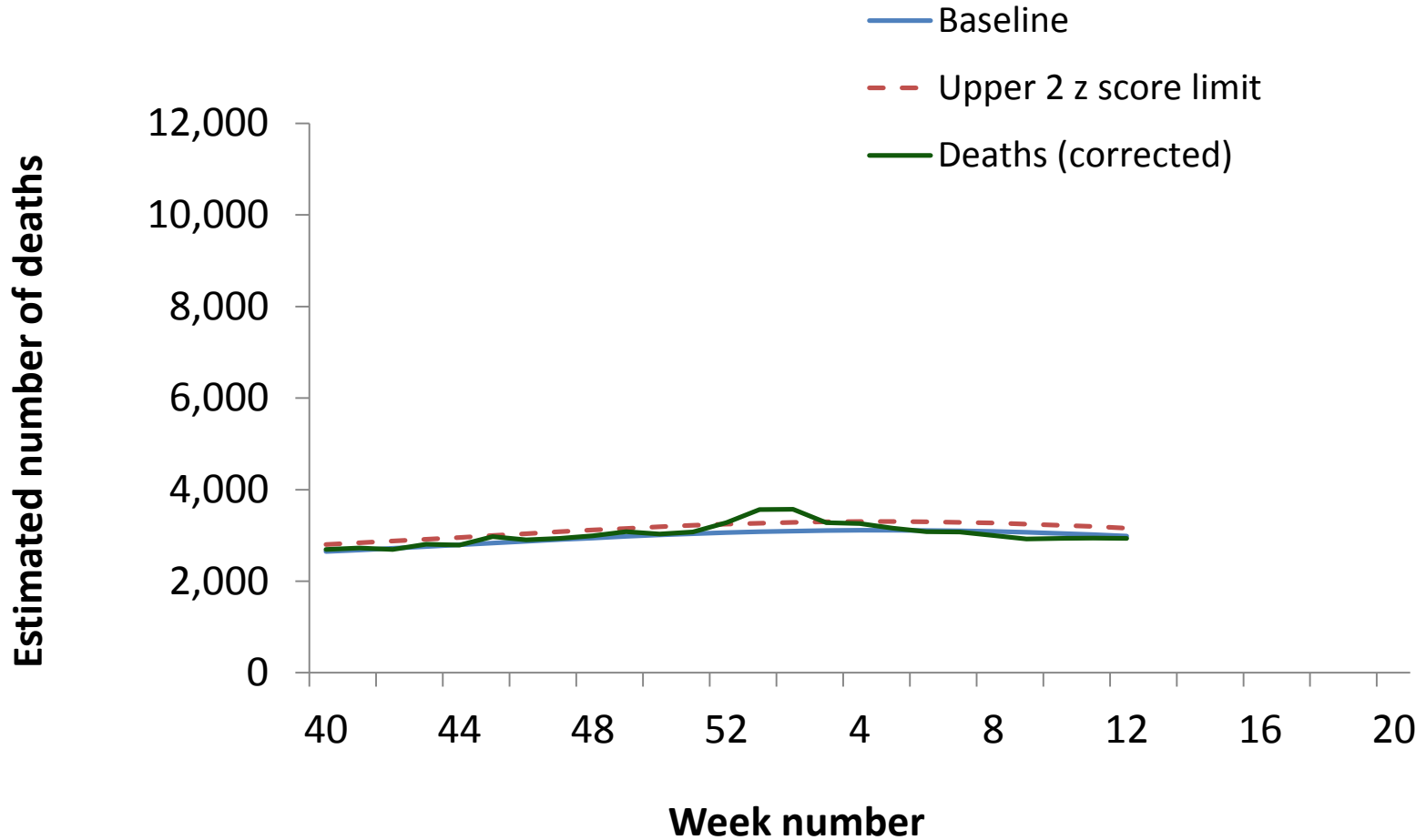


# Excess mortality (all causes) by week of death through the EuroMOMO algorithm in all ages, England



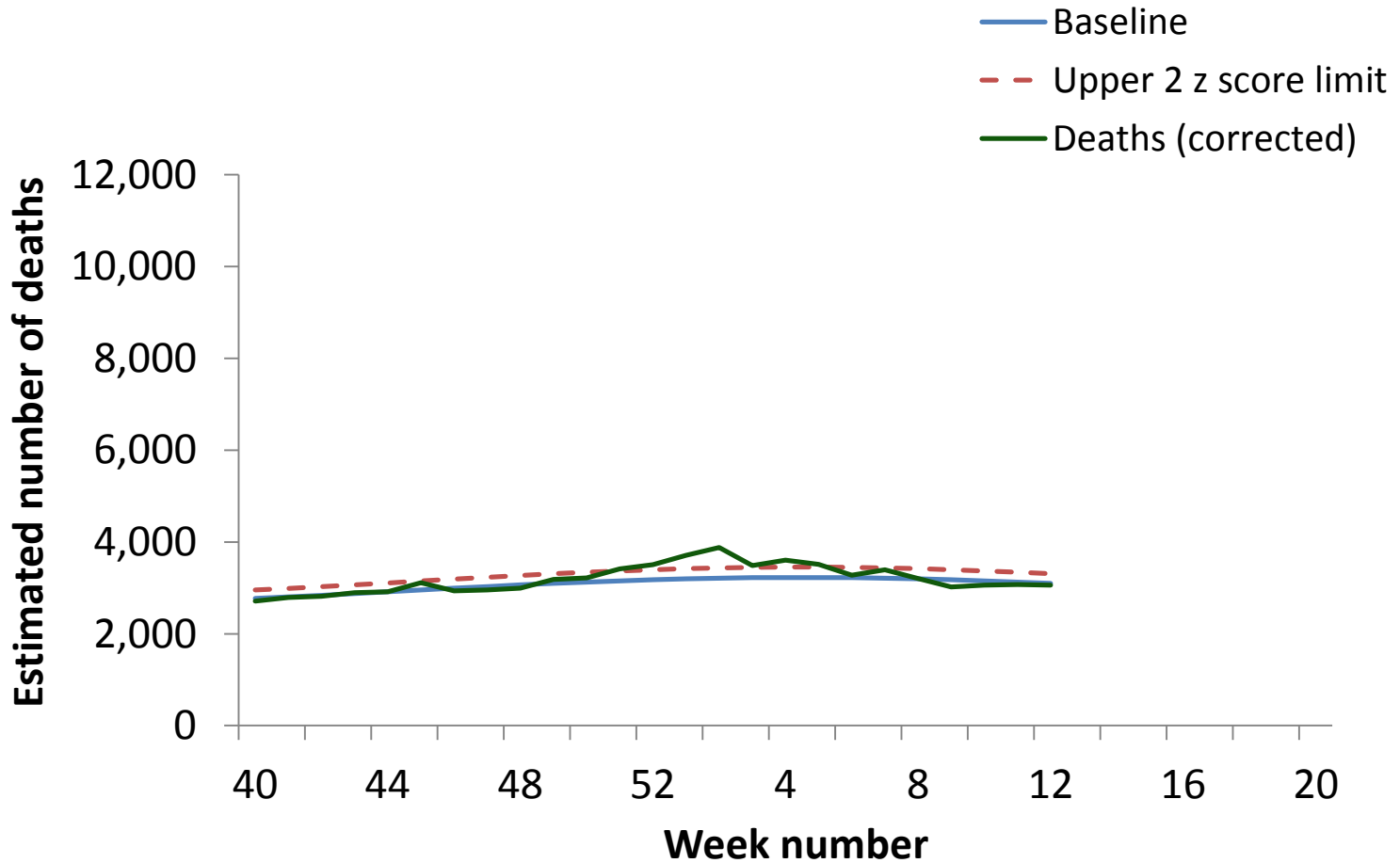


# Excess mortality (all causes) by week of death through the EuroMOMO algorithm, PHE North of England



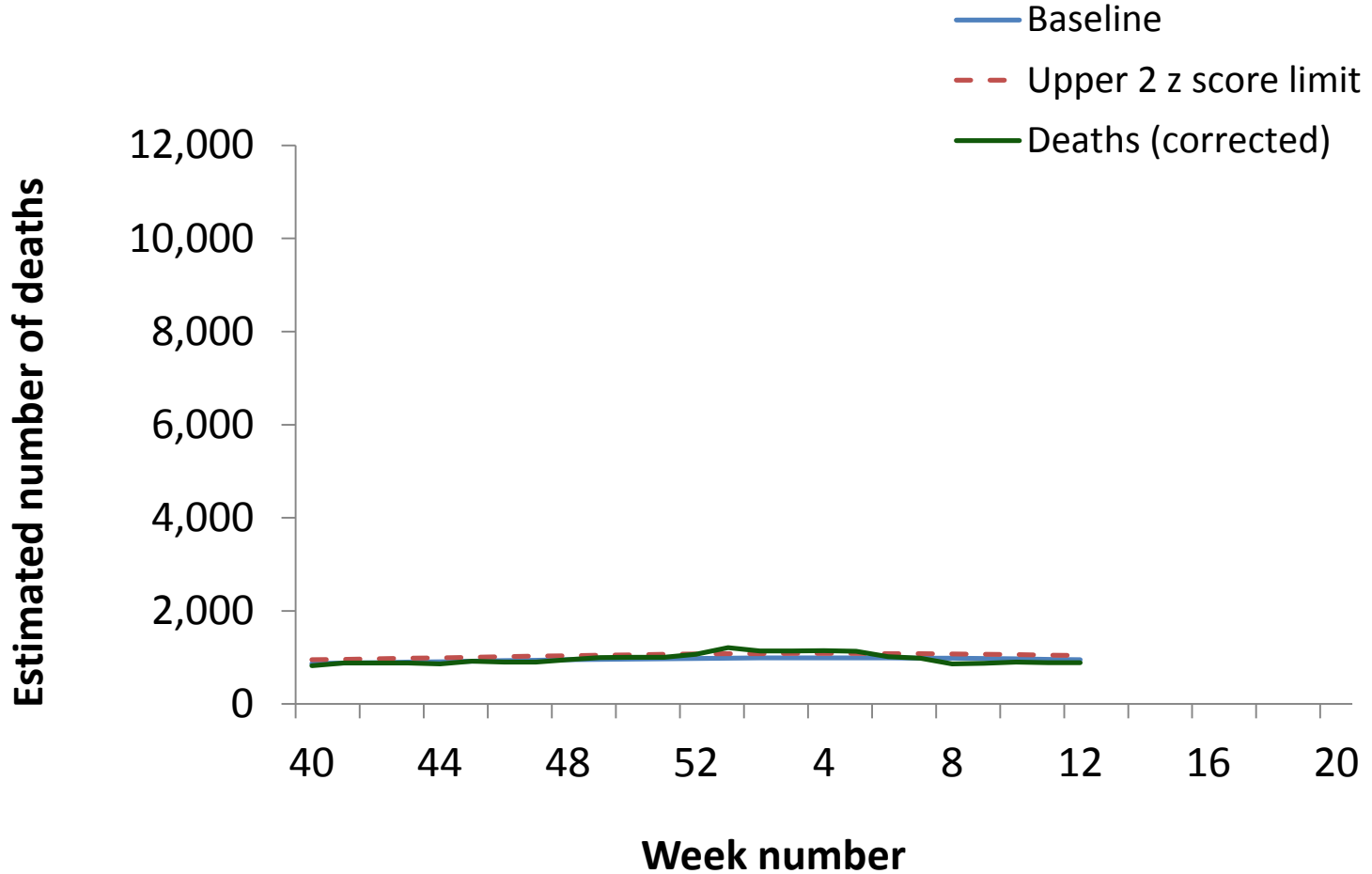


# Excess mortality (all causes) by week of death through the EuroMOMO algorithm, PHE Midlands and East of England



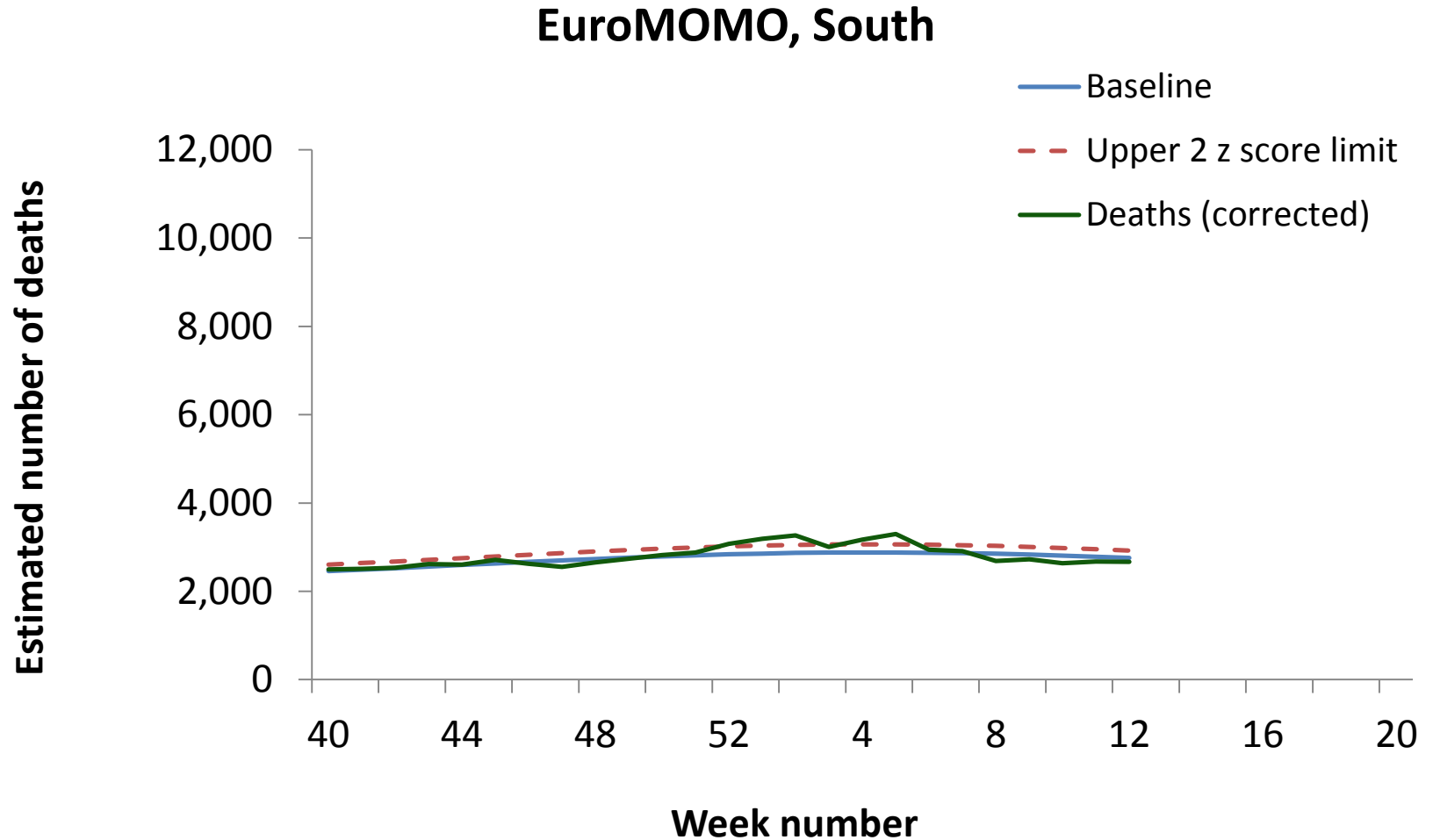


# Excess mortality (all causes) by week of death through the EuroMOMO algorithm, PHE London





# Excess mortality (all causes) by week of death through the EuroMOMO algorithm, PHE South of England

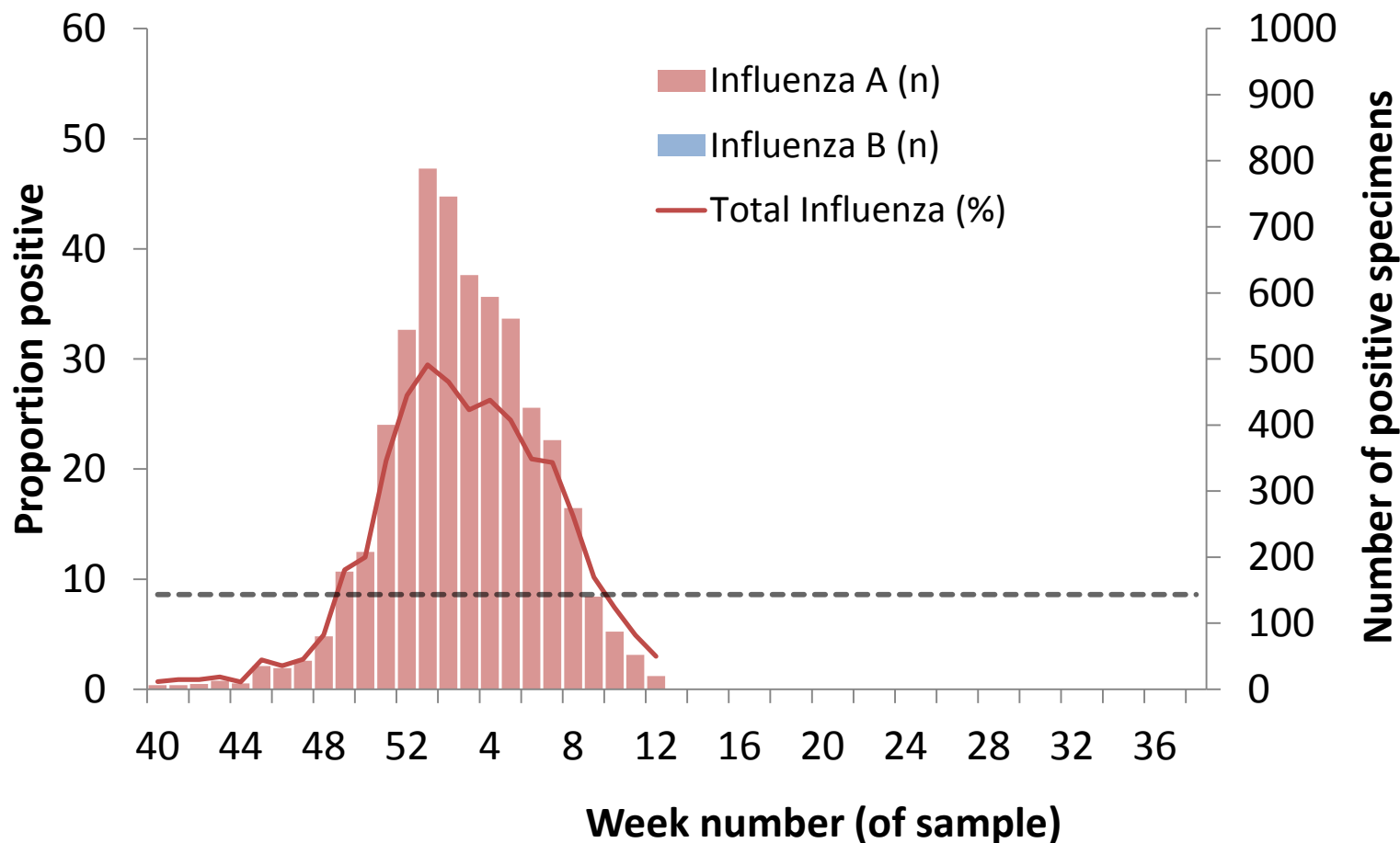




# Microbiological surveillance

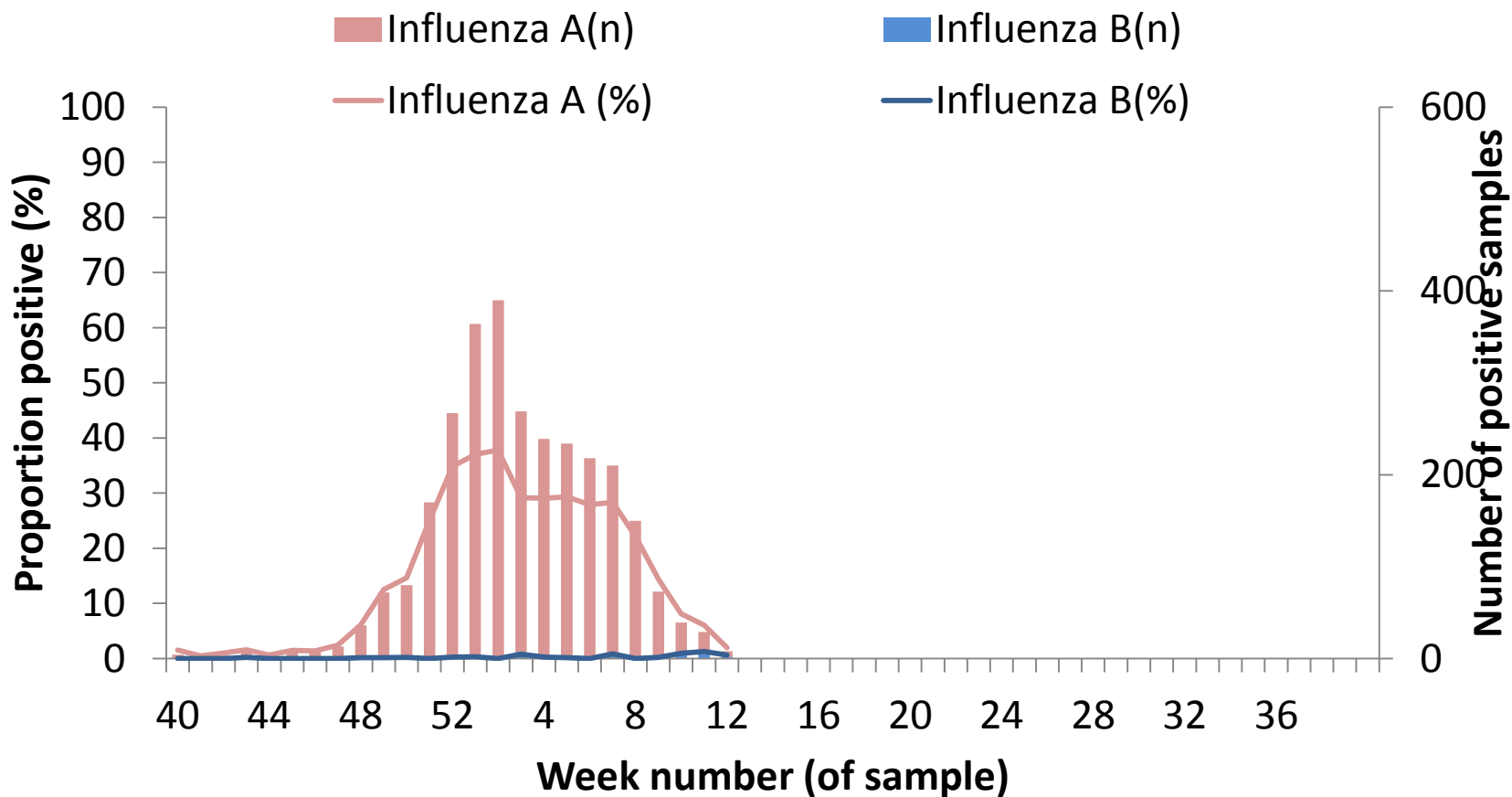


# DataMart: Number and proportion of samples positive for influenza, by type, England





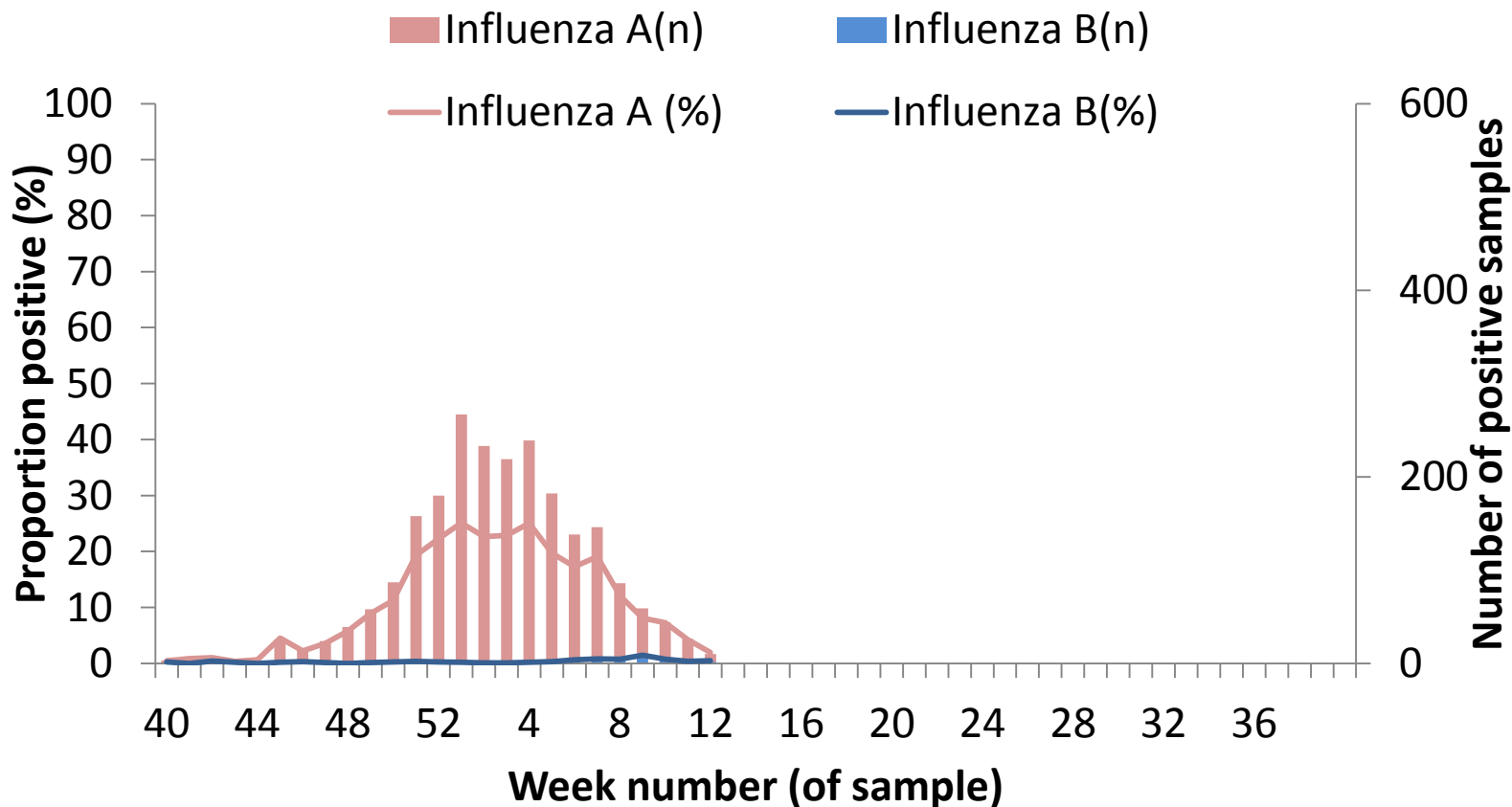
# DataMart: Number and proportion of samples positive for influenza, by type, PHE North of England





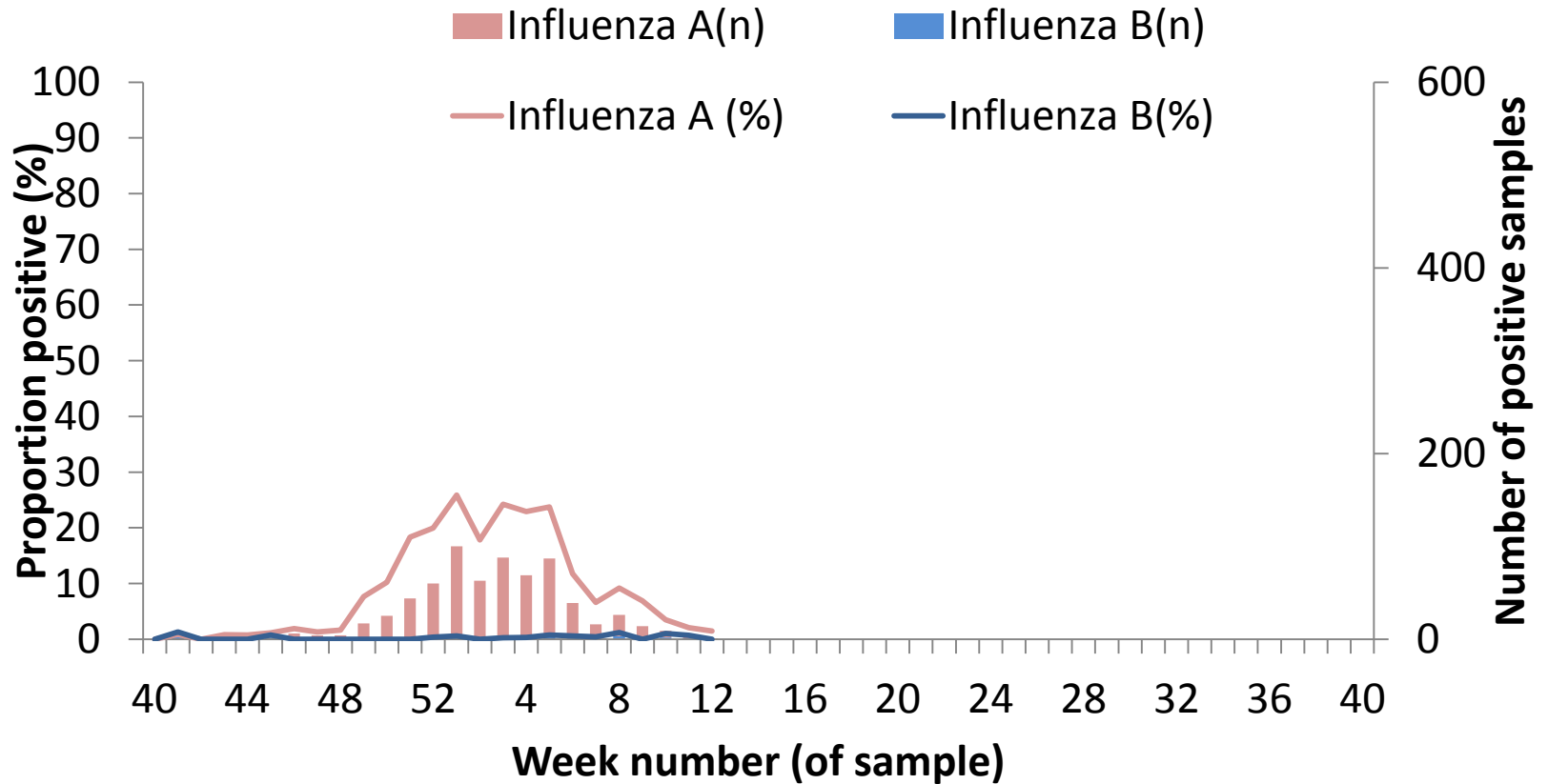


# DataMart: Number and proportion of samples positive for influenza, PHE Midlands and East of England



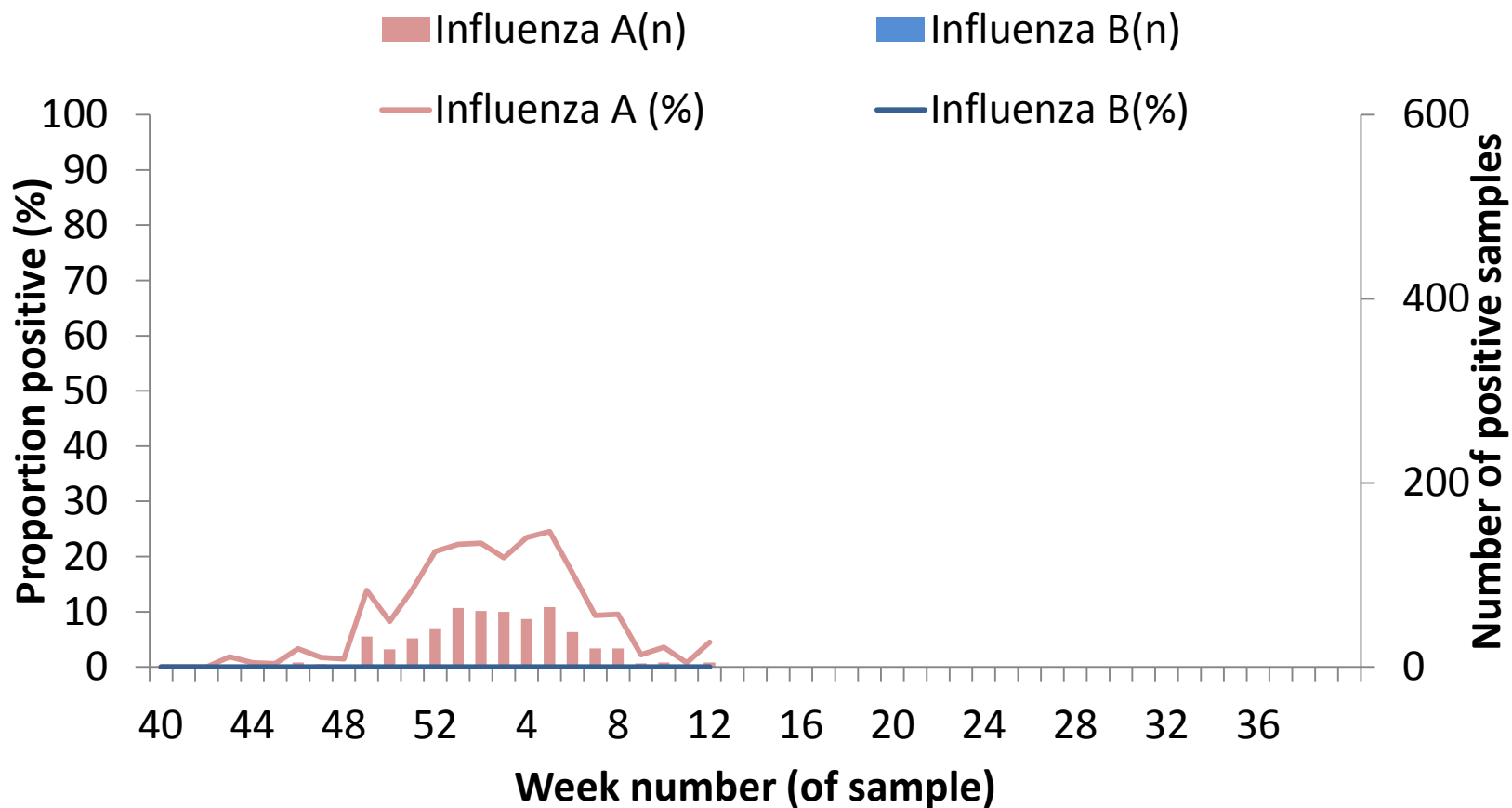


# DataMart: Number and proportion of samples positive for influenza, by type, PHE London



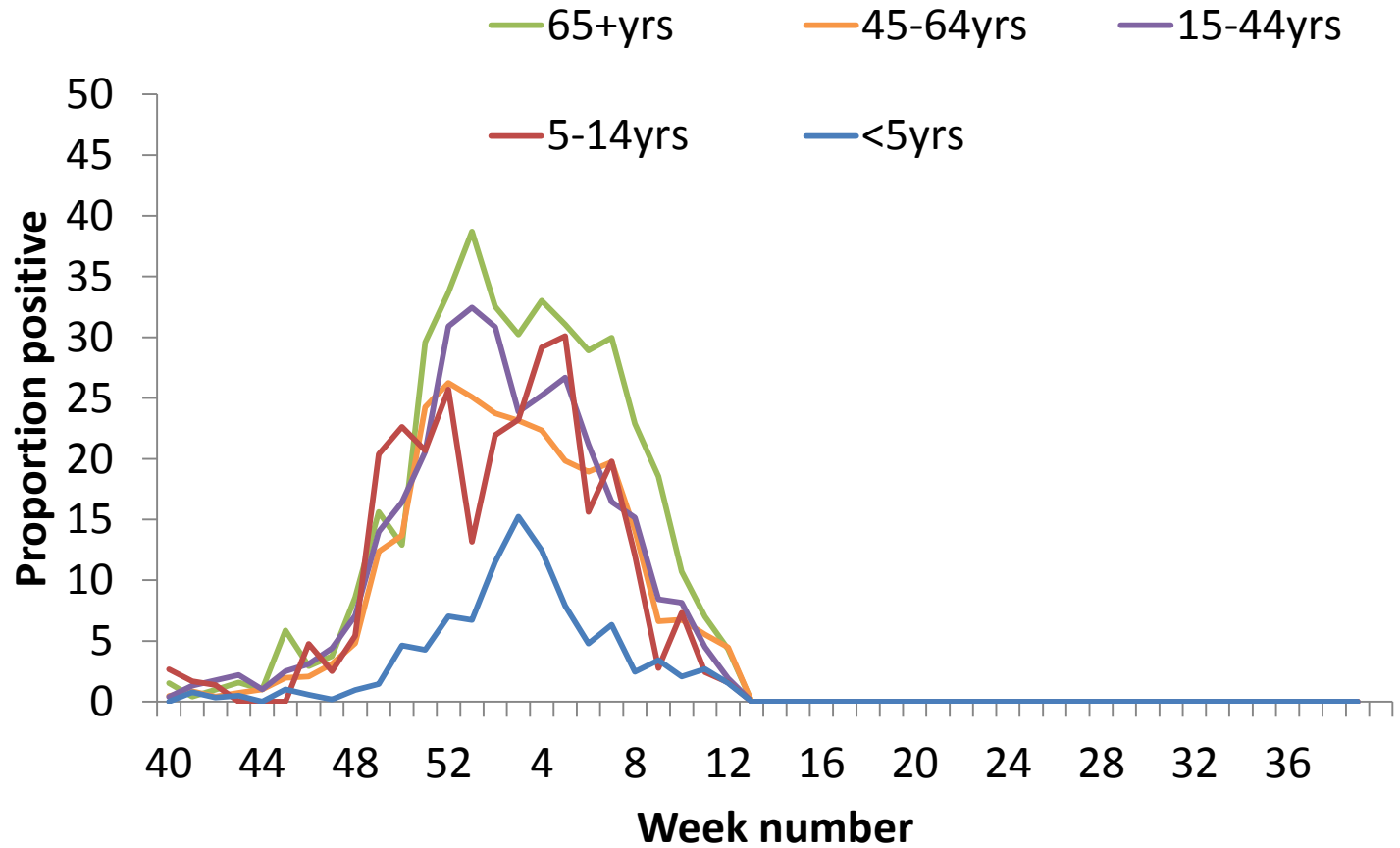


# DataMart: Number and proportion of samples positive for influenza, by type, PHE South of England



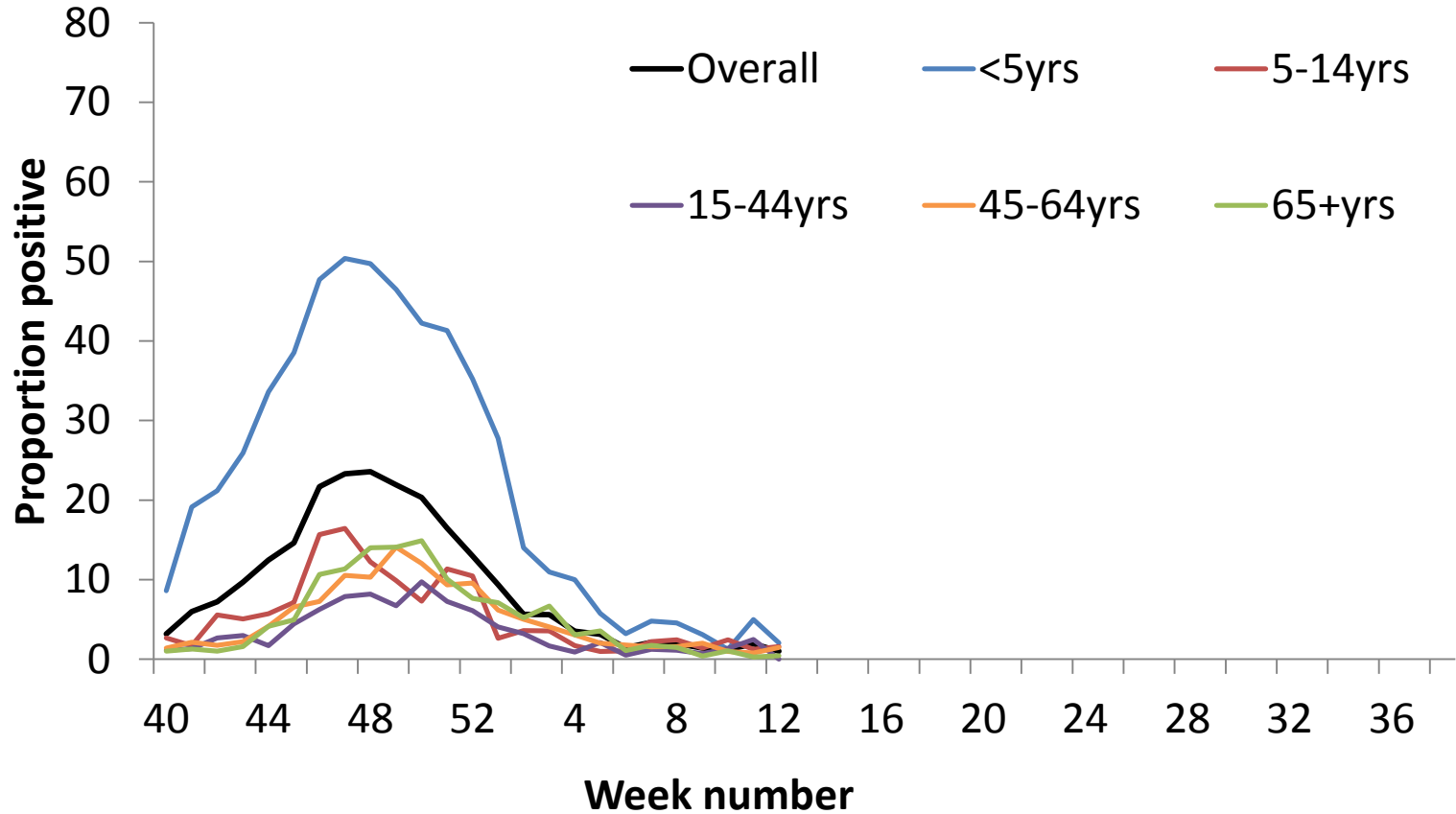


# DataMart: Proportion of samples positive for influenza, by age group



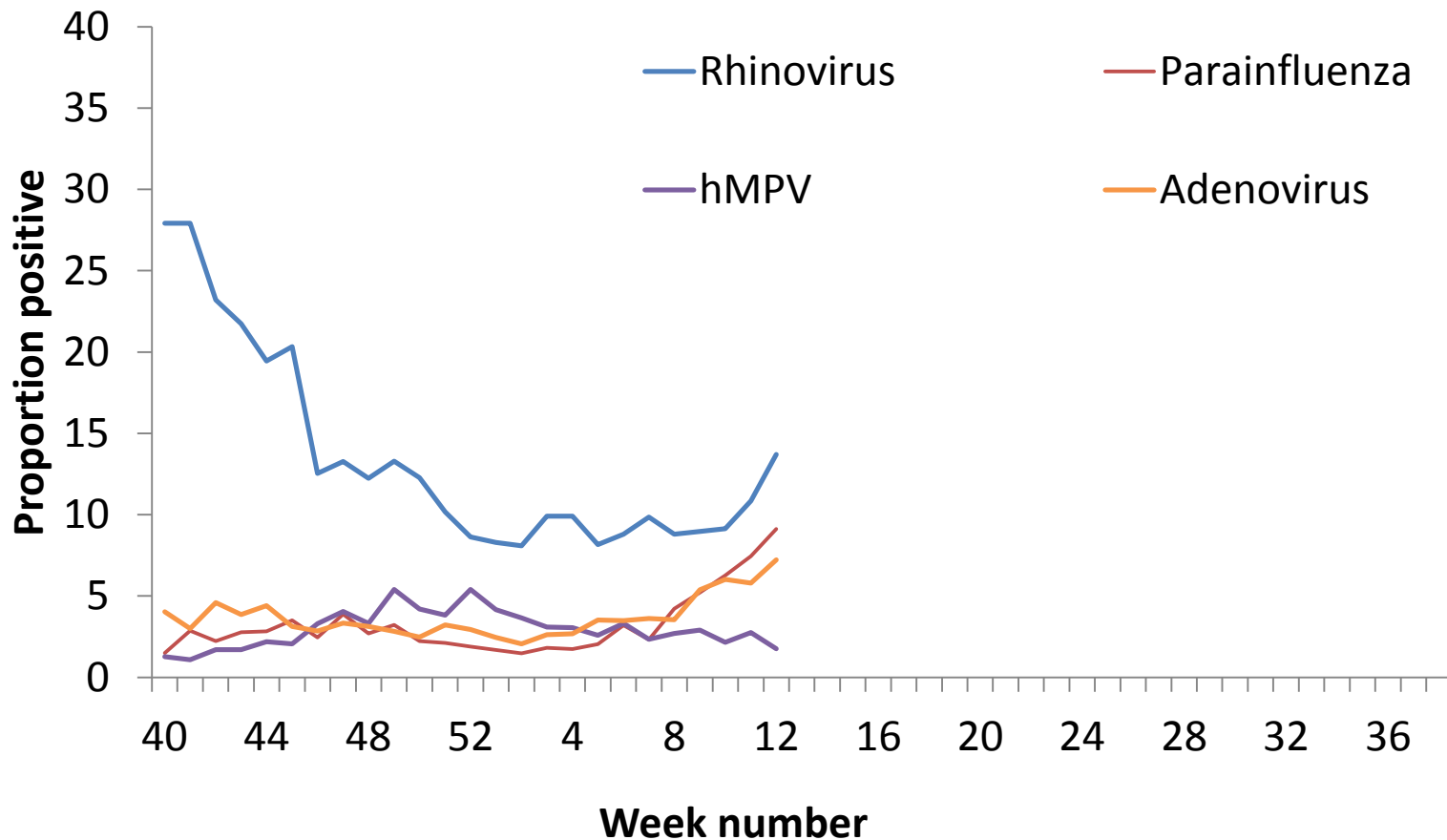


# DataMart: Proportion of samples positive for RSV, by age group





## DataMart: Proportion of samples positive for other viruses



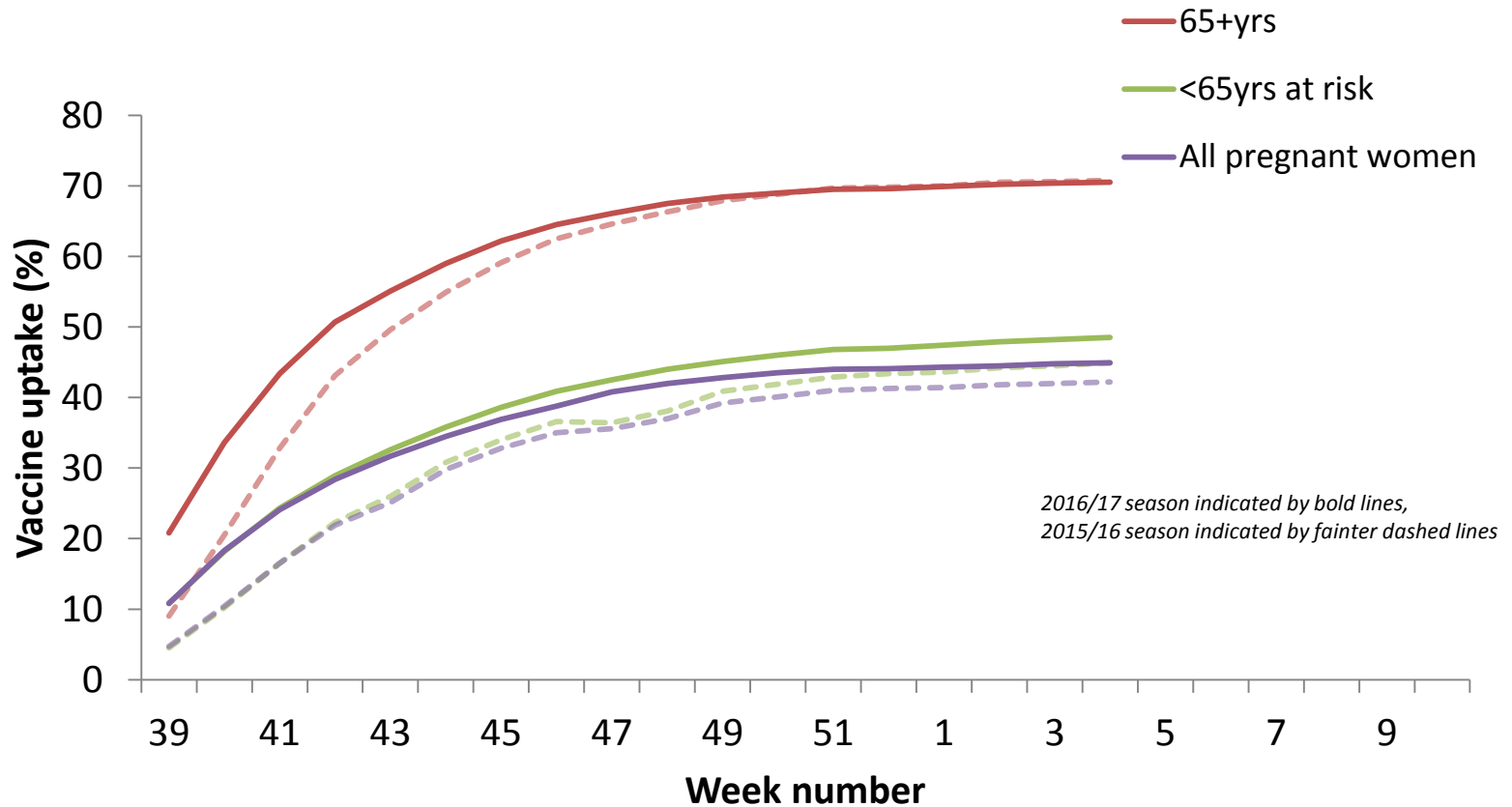


Public Health  
England

# Influenza vaccination



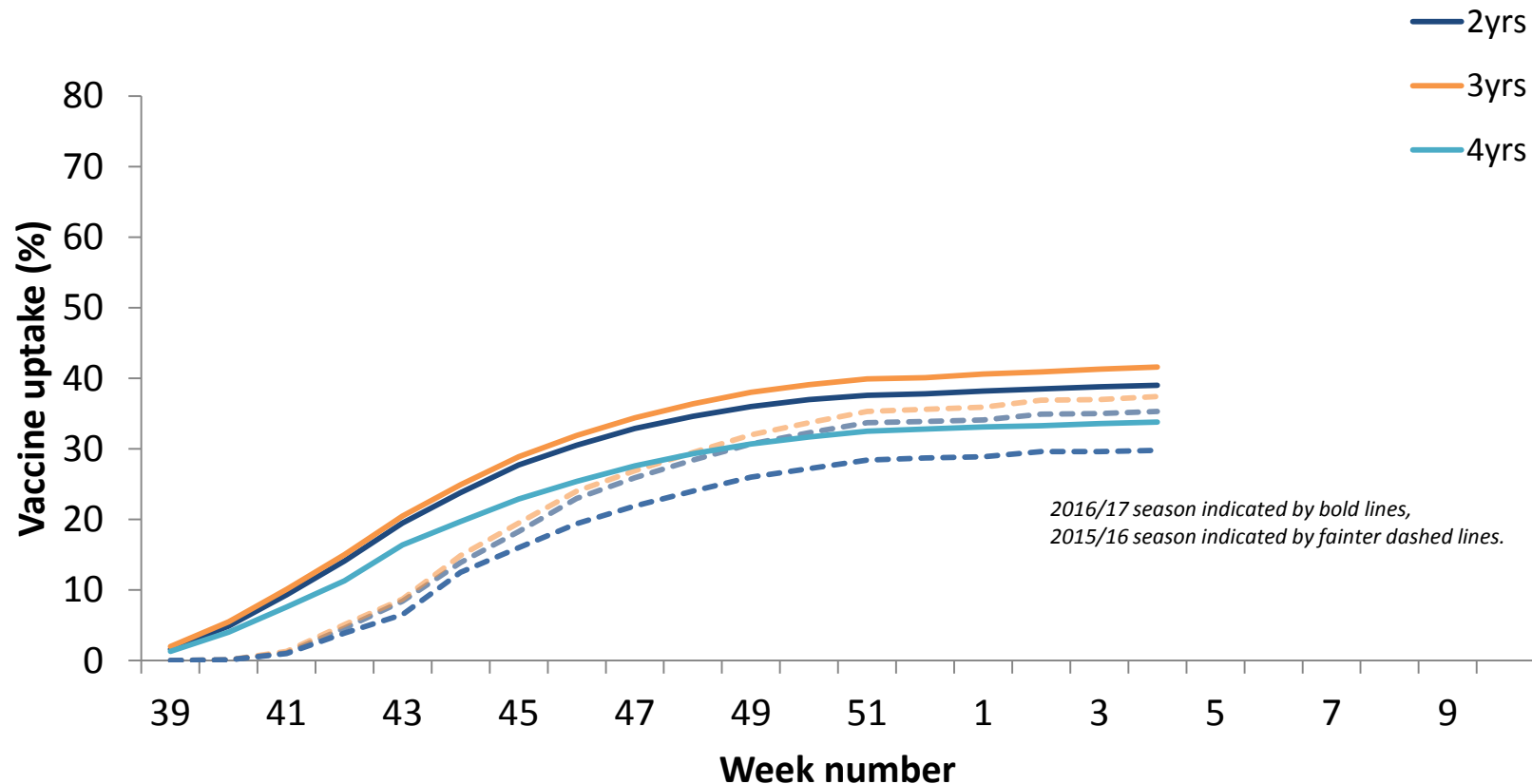
# Seasonal influenza vaccine uptake in targeted groups, 2016/17, England







# Seasonal influenza vaccine uptake in targeted groups, 2016/17, England



*2016/17 season indicated by bold lines,  
2015/16 season indicated by fainter dashed lines.*



# Links

- Sources of UK flu surveillance data:

<https://www.gov.uk/sources-of-uk-flu-data-influenza-surveillance-in-the-uk>

- Weekly flu report

<https://www.gov.uk/government/statistics/weekly-national-flu-reports>