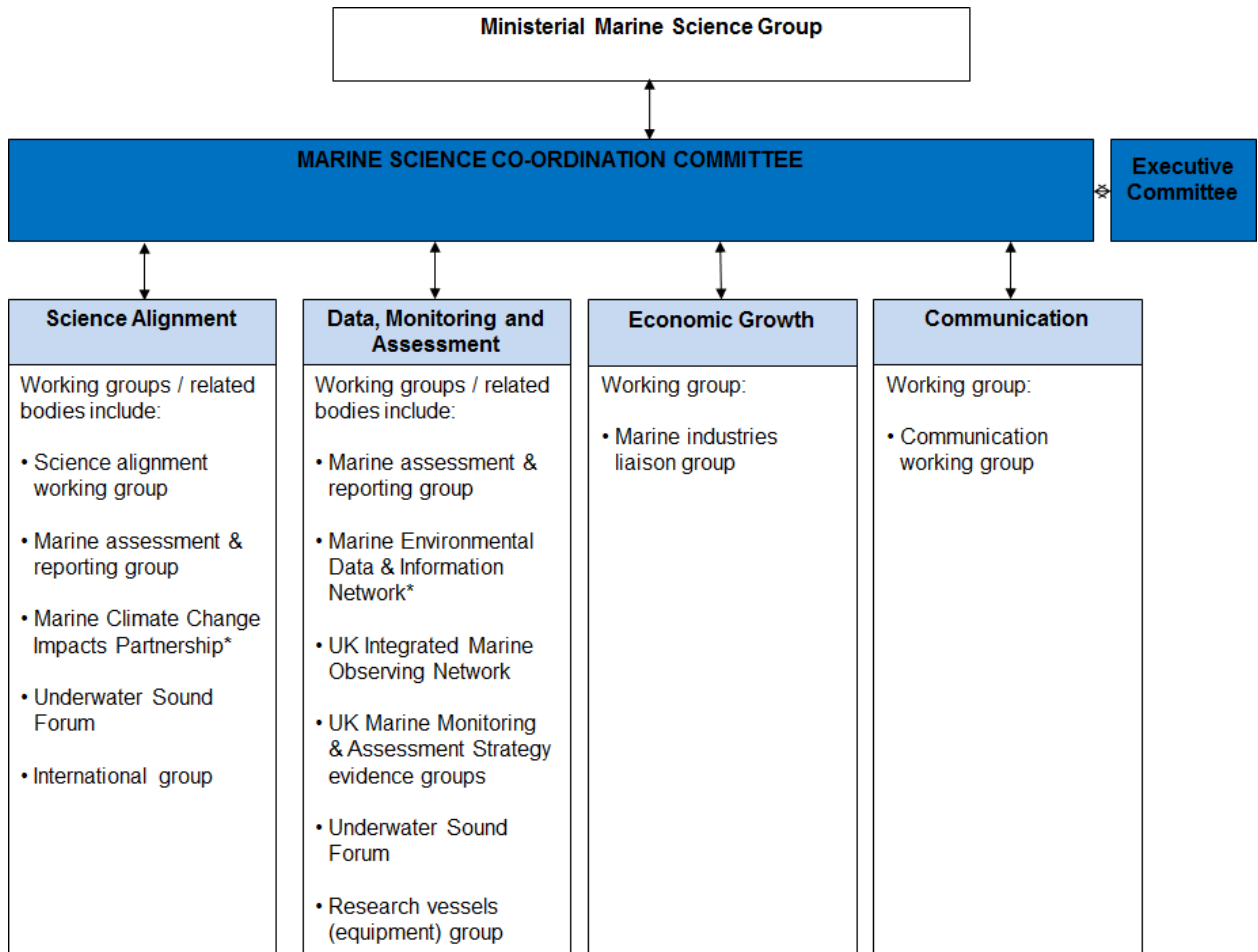


MARINE SCIENCE CO-ORDINATION COMMITTEE
STRATEGIC AREAS AND WORKING GROUPS
APRIL 2015



* The Marine Climate Change Impacts Partnership is not formally part of MSCC but provides advice on marine climate change impacts to the Committee

* Marine Environmental Data and Information Network is the national portal for access to data