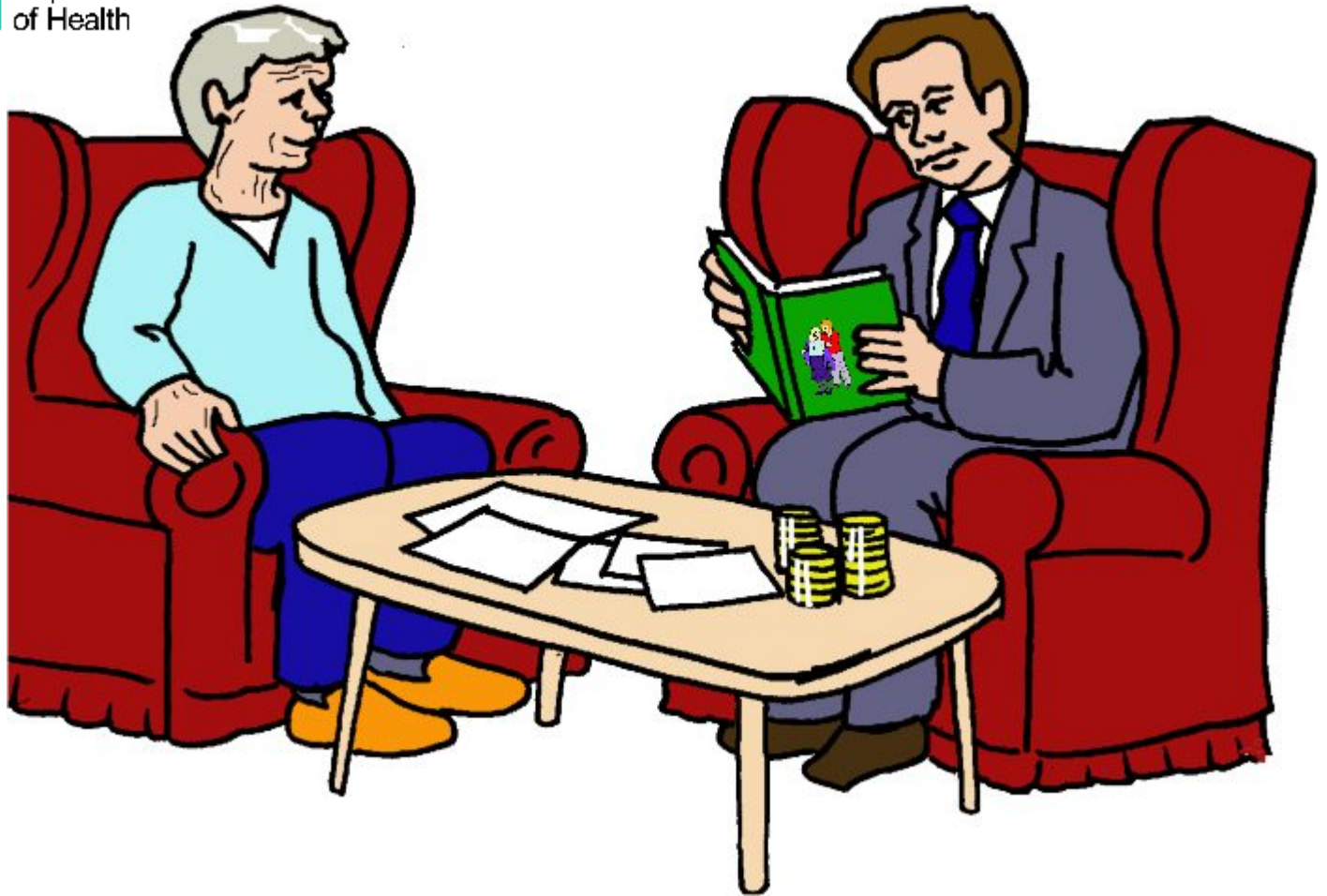
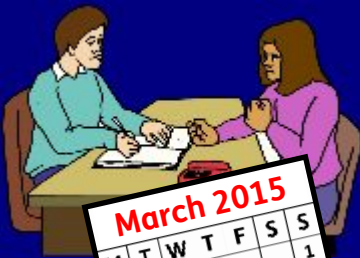




Department  
of Health



# Answer Booklet



Please tell us what you think.

You need to tell us by:  
Monday 30<sup>th</sup> March 2015



This is an EasyRead version of:

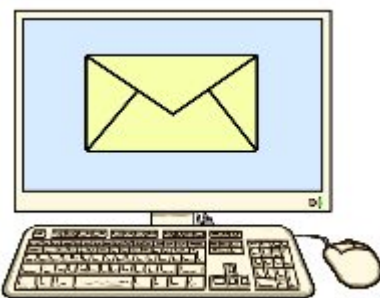
The Care Act 2014: Consultation on draft regulations and guidance to implement the cap on care costs and policy proposals for a new appeals system for care and support



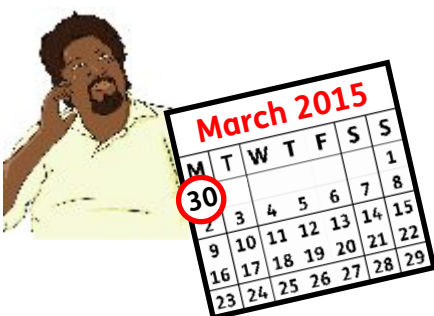
Please answer the questions you want to.  
You do not have to answer them all.



Please post this answer booklet to:  
**Care and Support Funding Reform and  
Appeals Consultation  
Department of Health  
Room 313B  
Richmond House  
79 Whitehall  
London.  
SW1A 2NS**



Or email it to:  
**[careactconsultation@dh.gsi.gov.uk](mailto:careactconsultation@dh.gsi.gov.uk)**



Please tell us what you think before  
**Monday 30<sup>th</sup> March 2015.**



### Question 1.

Do you think the rules and **guidance** mean you will be safe from paying very high costs in your lifetime?

Yes

No

Please tell us why you think this:



### Question 2.

Is it fair for councils to work out **independent personal budgets** by looking at what they pay for other people with similar needs?

Yes

No

Please tell us why you think this:



### Question 3.

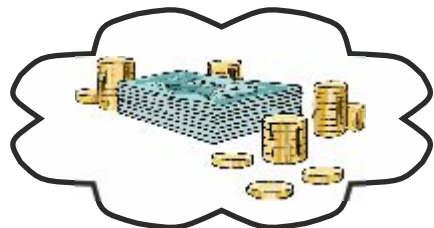
Is it easy to understand how councils work out **independent personal budgets**?

Yes

No



Please tell us why you think this:



### Question 4.

Is it easy to understand about how **care accounts** will work?

Yes

No



Please tell us why you think this:



**Question 5.**

Could we do anything else to help you use a care account to plan how you will pay for care?

Yes

No

Please tell us more about this:



**Question 6.**

Do you agree with our ideas for people who are working age?

Yes

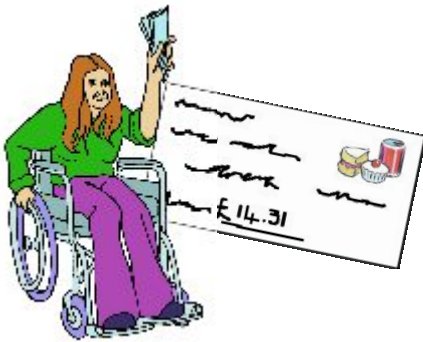
No

Please tell us why you think this:



### Question 7.

Please tell us any other ways we can support working adults to save and plan for care costs.



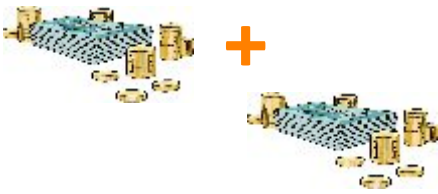
### Question 8.

Do we need to do more work on **daily living costs**?

Yes

No

Please tell us why you think this:



### Question 9.

Are the rules about **top ups** clear? Will they keep you and the council safe?

Yes

No

Please tell us why you think this:



### Question 10.

Are the new rules about **means testing** fair, and easy to understand?

Yes

No

Please tell us why you think this:



### Question 11.

Do you think we need a new way to **appeal** if you think your council's decision about care is unfair?

Yes

No

Please tell us why you think this:



### Question 12.

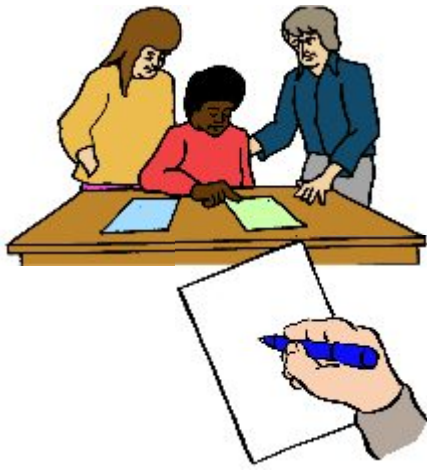
Are **appeals** important to get care decisions right?

Yes

No

Please tell us why you think this:





### Question 13.

Do you agree with the decisions you could **appeal** about? Should anything else be on the list?

Yes

No

Please tell us why you think this:



### Question 14.

Should you be able to **appeal** about care costs in the same way?

Yes

No

Please tell us why you think this:



### Question 15.

What skills and experience do you think the **Independent Reviewer** needs?



### Question 16.

Should the local council or another organisation choose the **Independent Reviewer**?

Please tell us why you think this:



### Question 17.

Is 3 years long enough for someone who used to work for the council to wait to be an **Independent Reviewer**?

Yes

No

Please tell us why you think this:



### Question 18.

Should the **Independent Reviewer** think about the local rules, guidance and what happened when they decide if the council's decision is fair?

Yes

No

Please tell us why you think this:



### Question 19.

How can we make sure all **Independent Reviewers** make fair decisions in the same way?



**Question 20.**

Do you agree with our ideas about how long an appeal should take?

Yes

No

If you answer no, please tell us what you think would be better:



**Question 21.**

Do you think our plans for appeals will make it quicker and easier to sort out problems?

Yes

No

Please tell us why you think this:

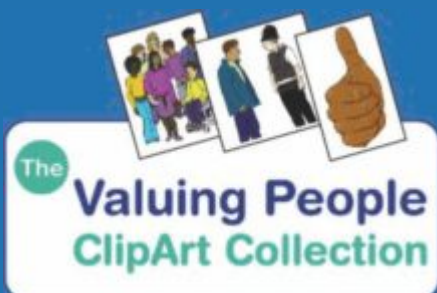


**Question 22.**

Is there anything you would like to say about how much appeals will cost?



This paper meets the European EasyRead Standard.



Artwork includes material from the Valuing People Clipart collection And cannot be used anywhere else without written permission from Inspired Services Publishing, Ltd.

[www.valuingpeopleclipart.org.uk](http://www.valuingpeopleclipart.org.uk)