



PHE Influenza Surveillance graphs

- Influenza activity in the United Kingdom is monitored using a variety of [surveillance systems](#). The [National Influenza Report](#) which interprets the data is published weekly.
- National and subnational outputs from the various surveillance systems are grouped according to the following categories:
 - [Community influenza surveillance](#)
 - [Influenza-like illness GP consultation rates](#)
 - [Influenza-confirmed hospitalisations](#)
 - [All-cause mortality](#)
 - [Microbiological surveillance](#)
 - [Influenza vaccination](#)

Respiratory Diseases Department

Centre for Infectious Disease Surveillance and Control

Public Health England

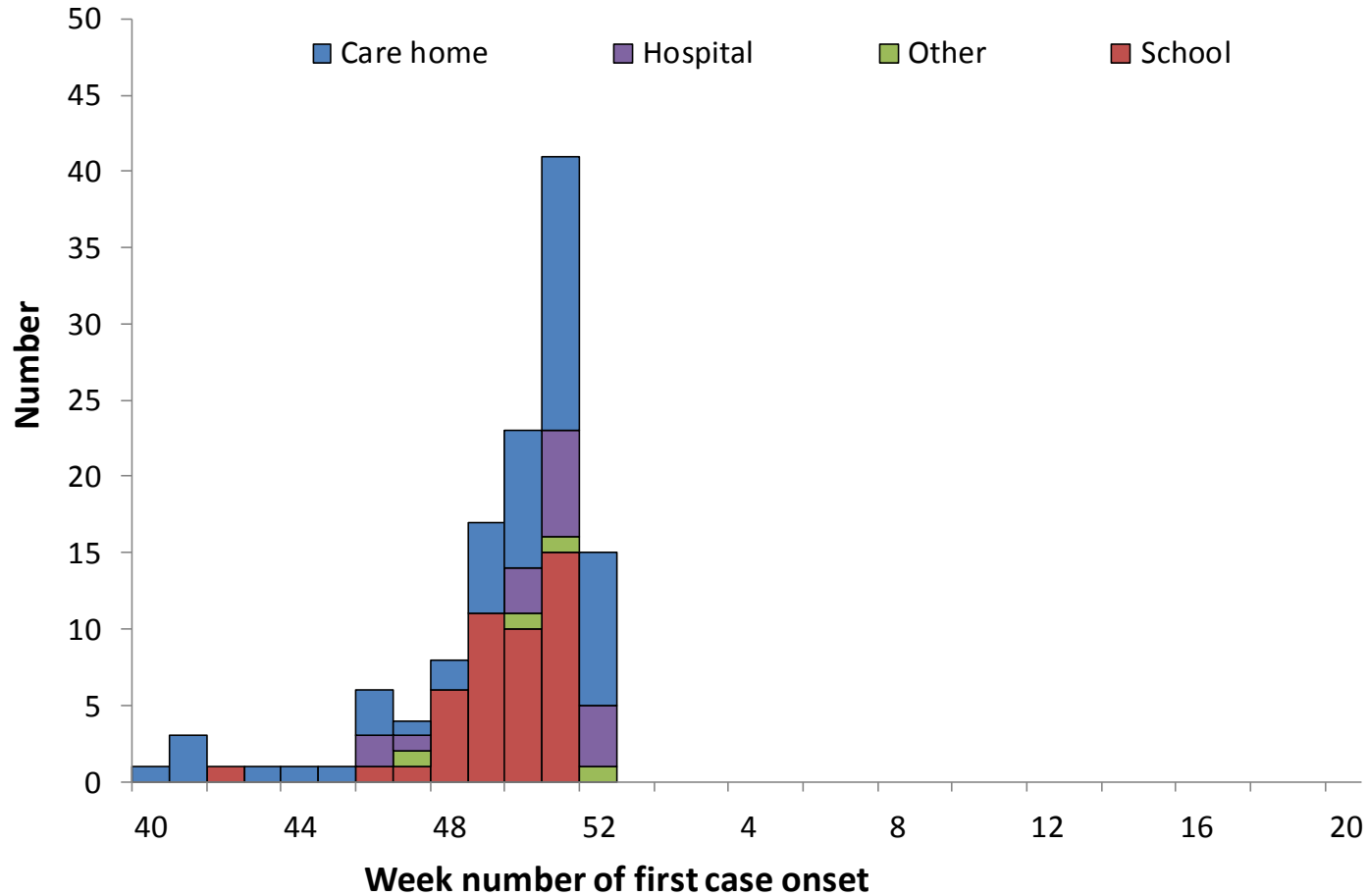
respcidsc@phe.gov.uk



Community influenza surveillance



Number of acute respiratory outbreaks by institution, UK



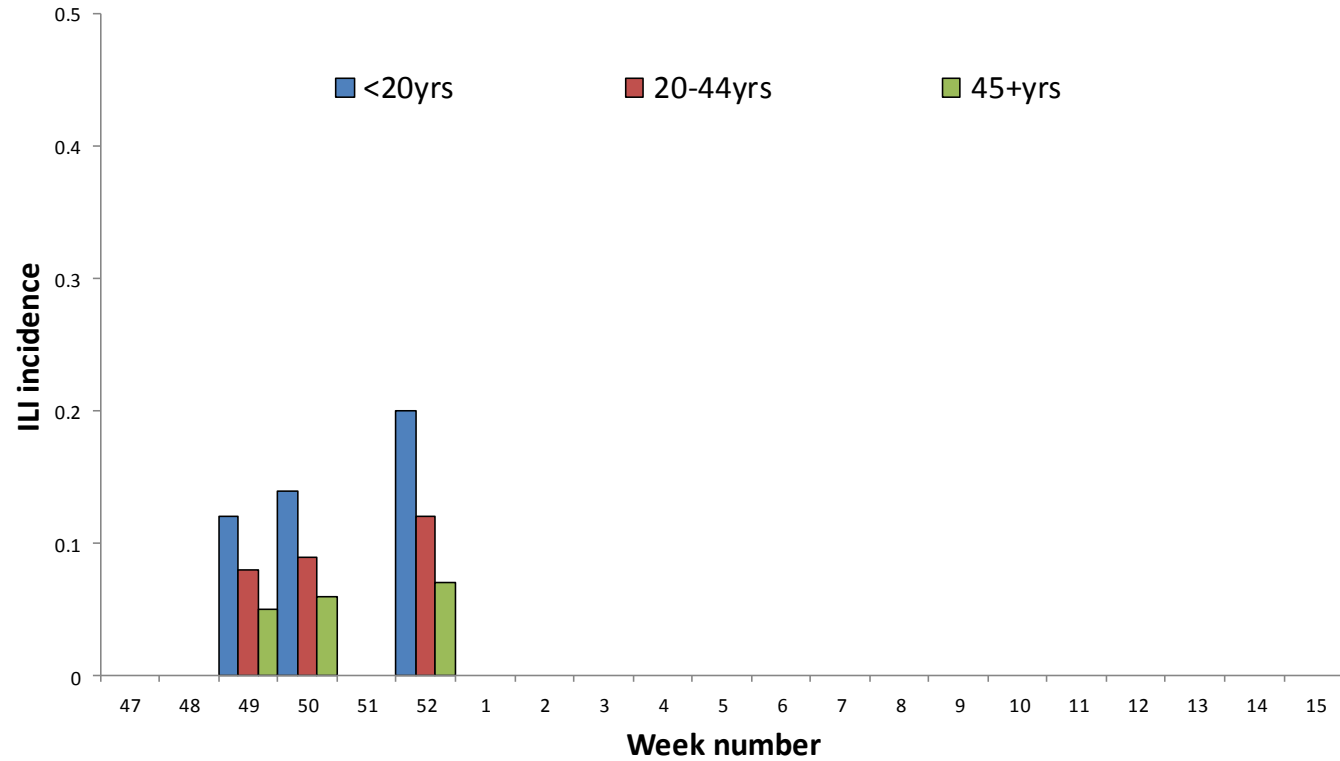


Outbreaks (table by PHE Region)

	Outbreaks reported in Week 1	Cumulative since Week 40
PHE North of England	2	36
PHE Midlands and East of England	6	40
PHE London	1	18
PHE South of England	5	27



FluSurvey ILI incidence by age group, UK

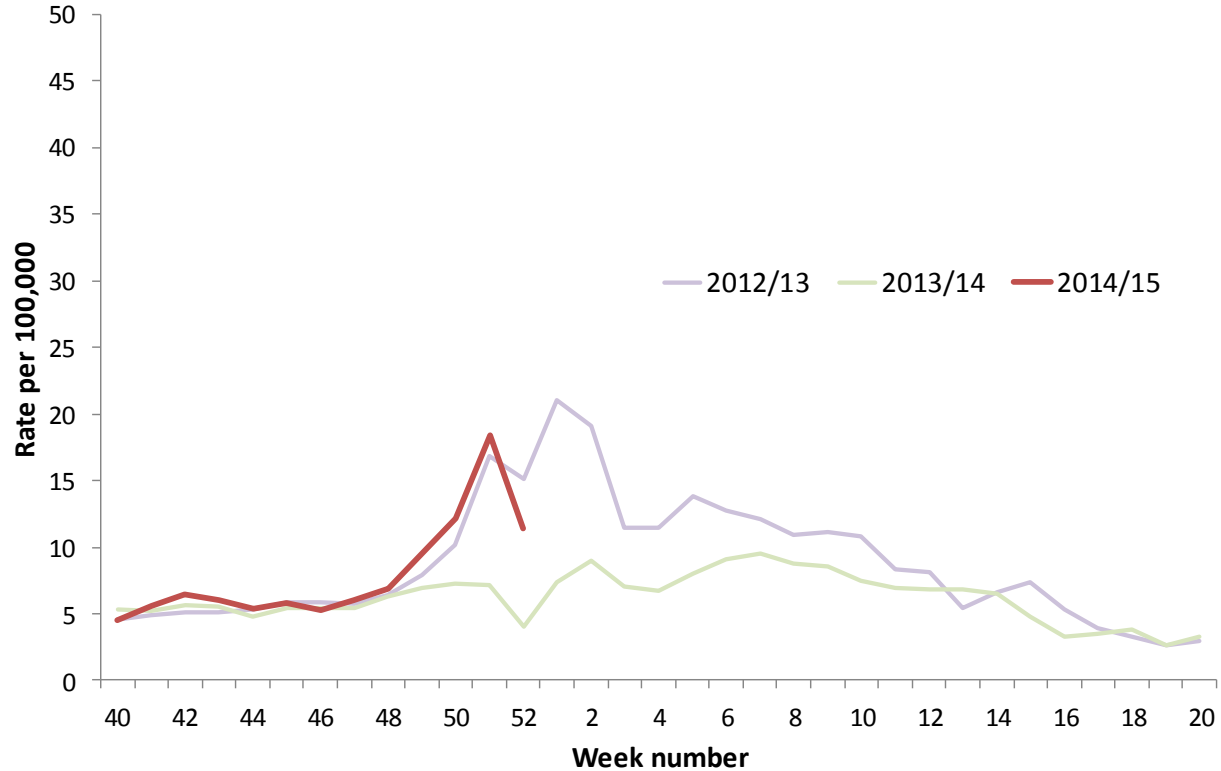




Influenza-like illness GP consultation rates

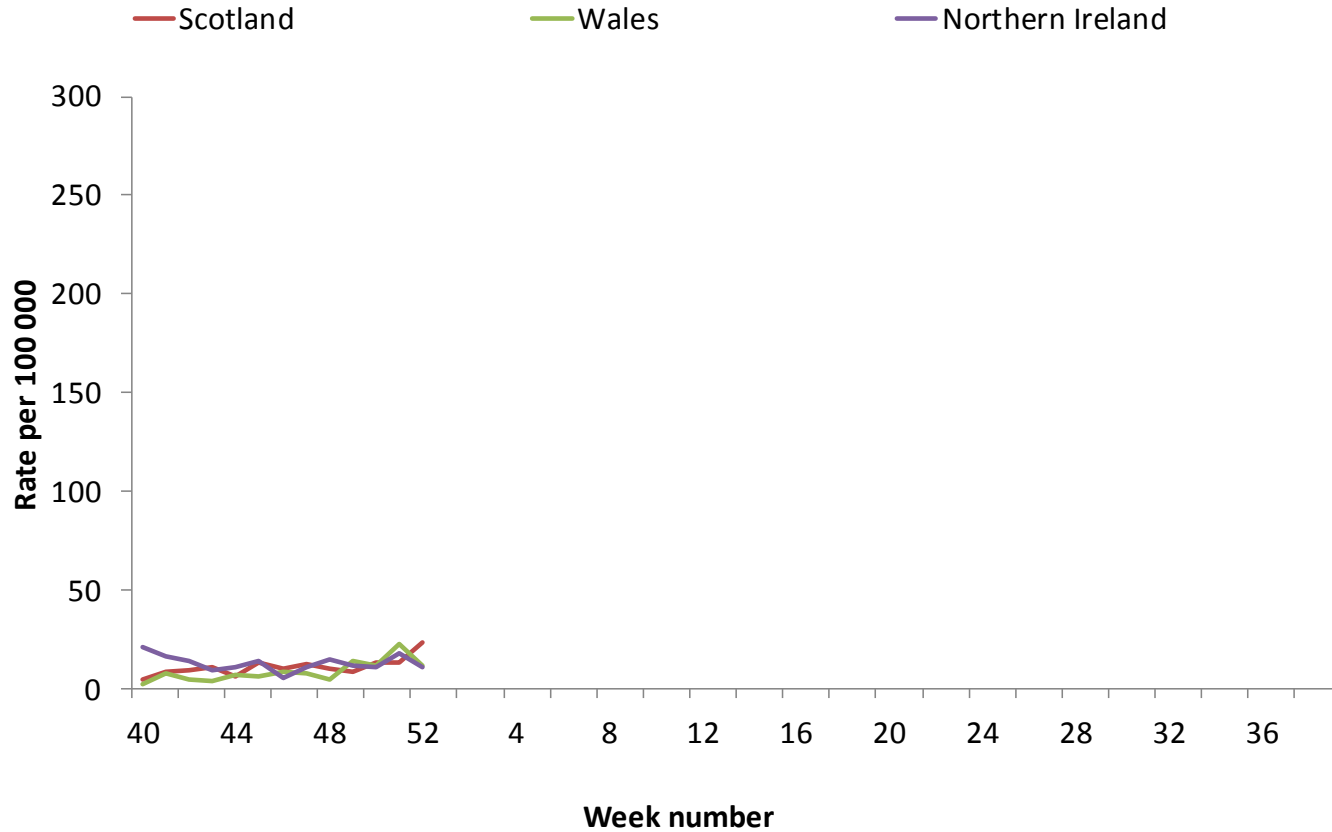


GP In Hours ILI consultation rate, England





ILI/influenza – RCGP (England and Wales), Scotland, Wales and Northern Ireland



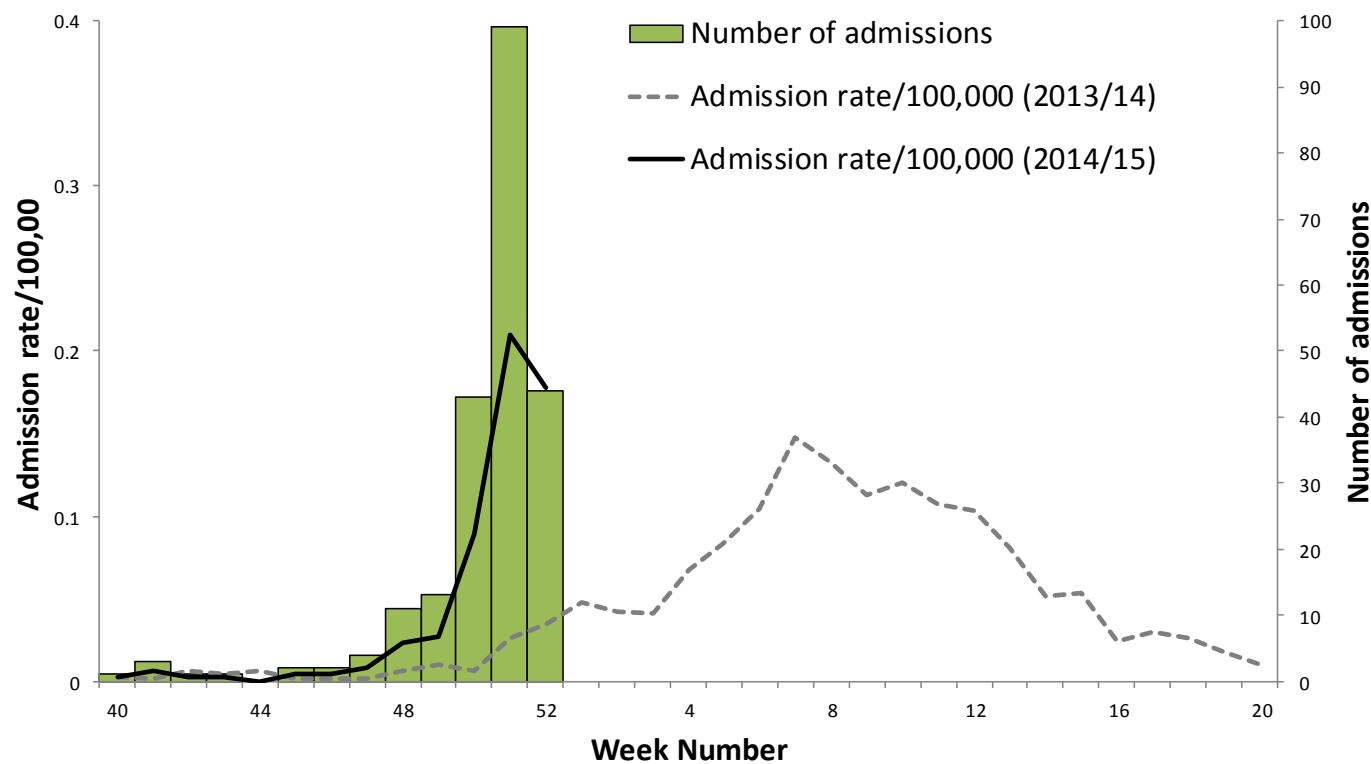
NB. Scottish rates are weekly averages of daily data.



Influenza-confirmed hospitalisations

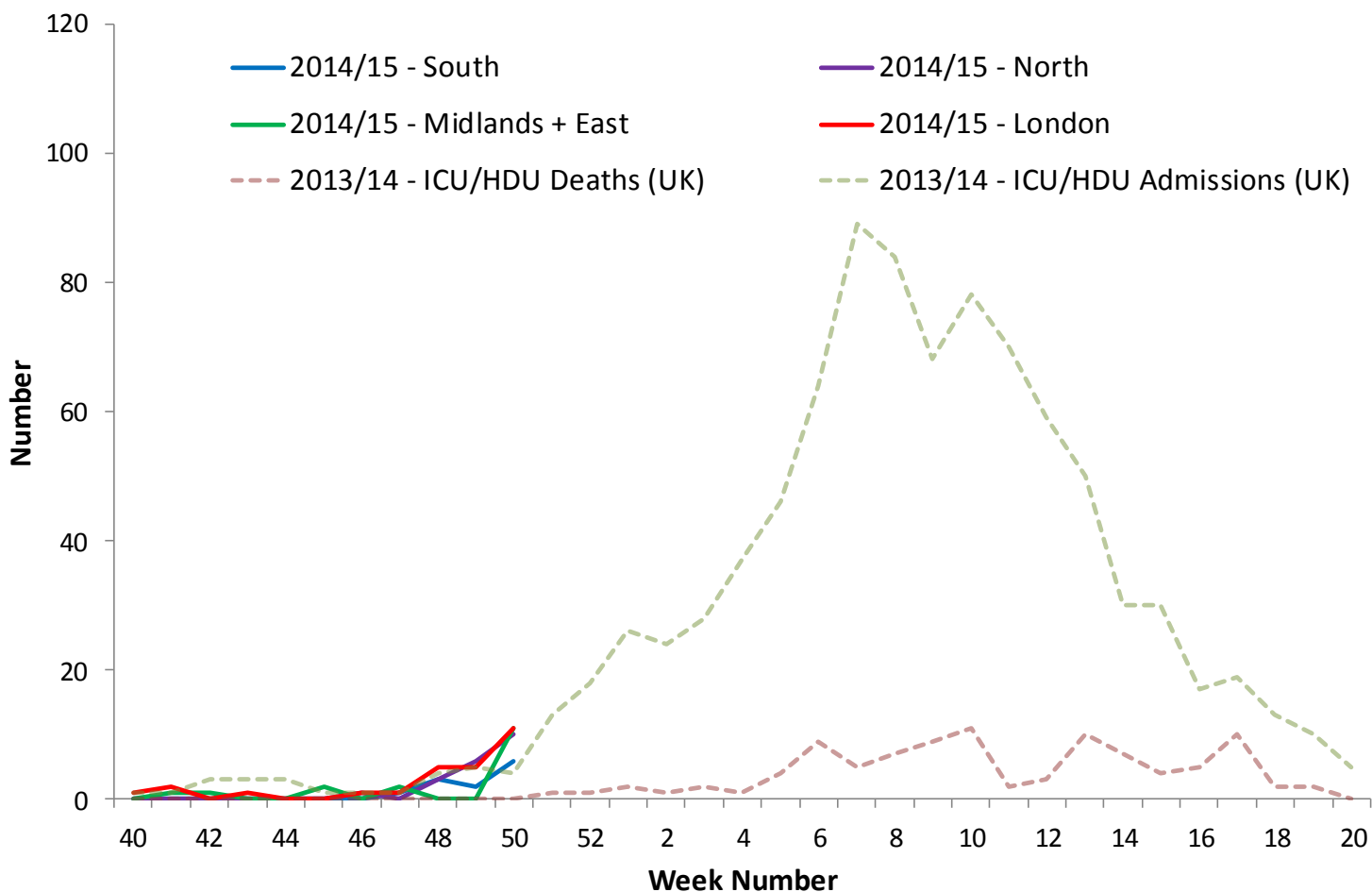


Weekly ICU/HDU influenza admission rate per 100,000 trust catchment population , England, since week 40 2014



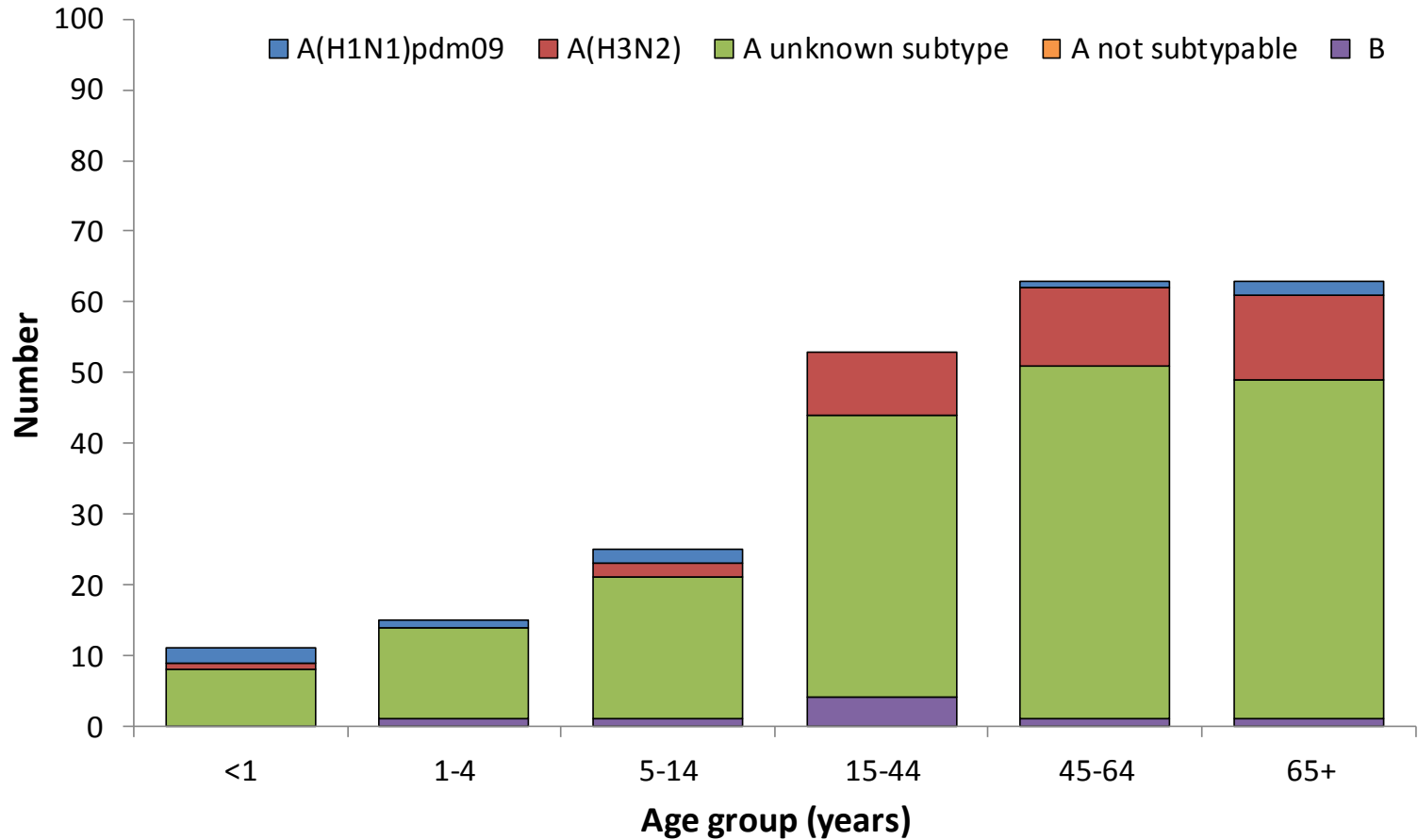


Weekly ICU/HDU influenza admission rate per 100,000 trust catchment population by PHE region, since week 40 2014



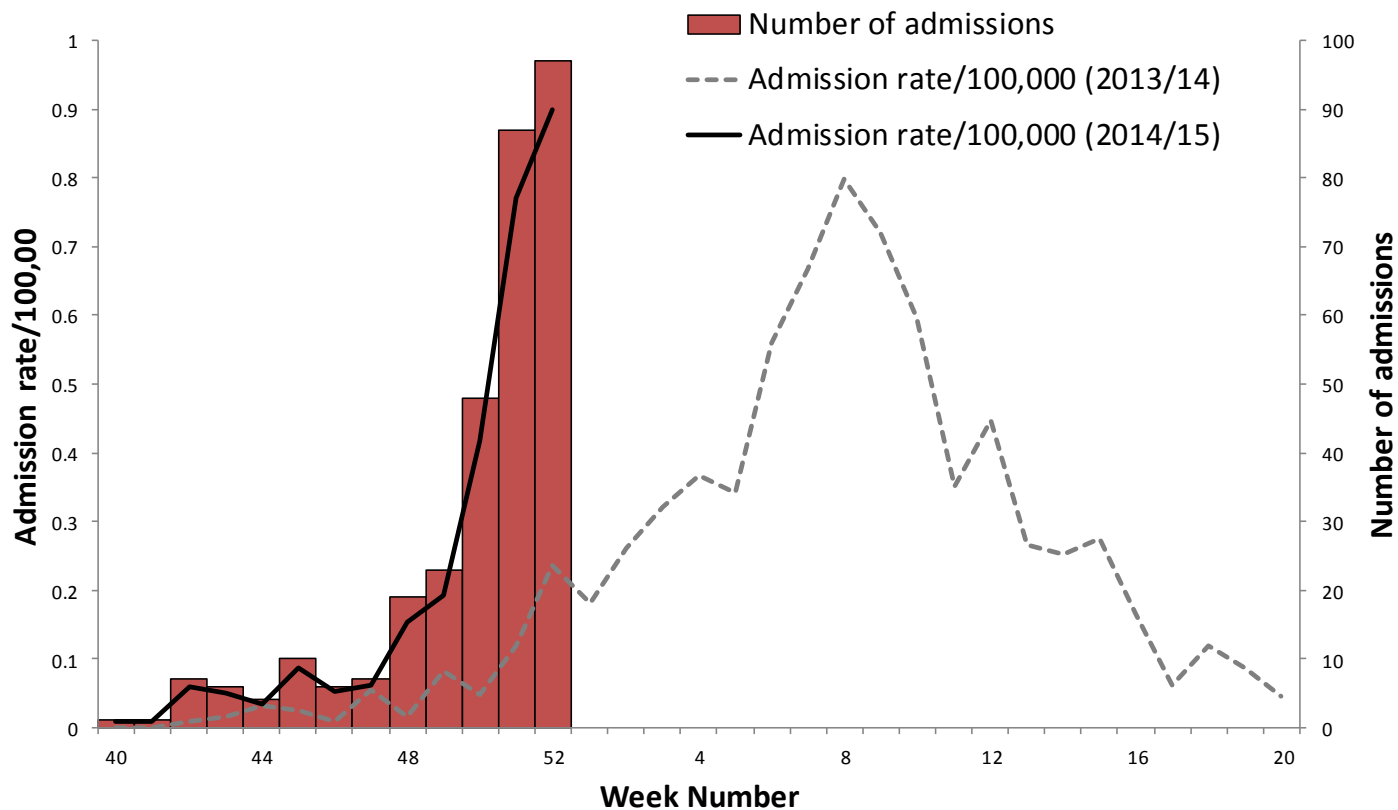


Influenza confirmed ICU admissions (USISS mandatory) by age and influenza subtype



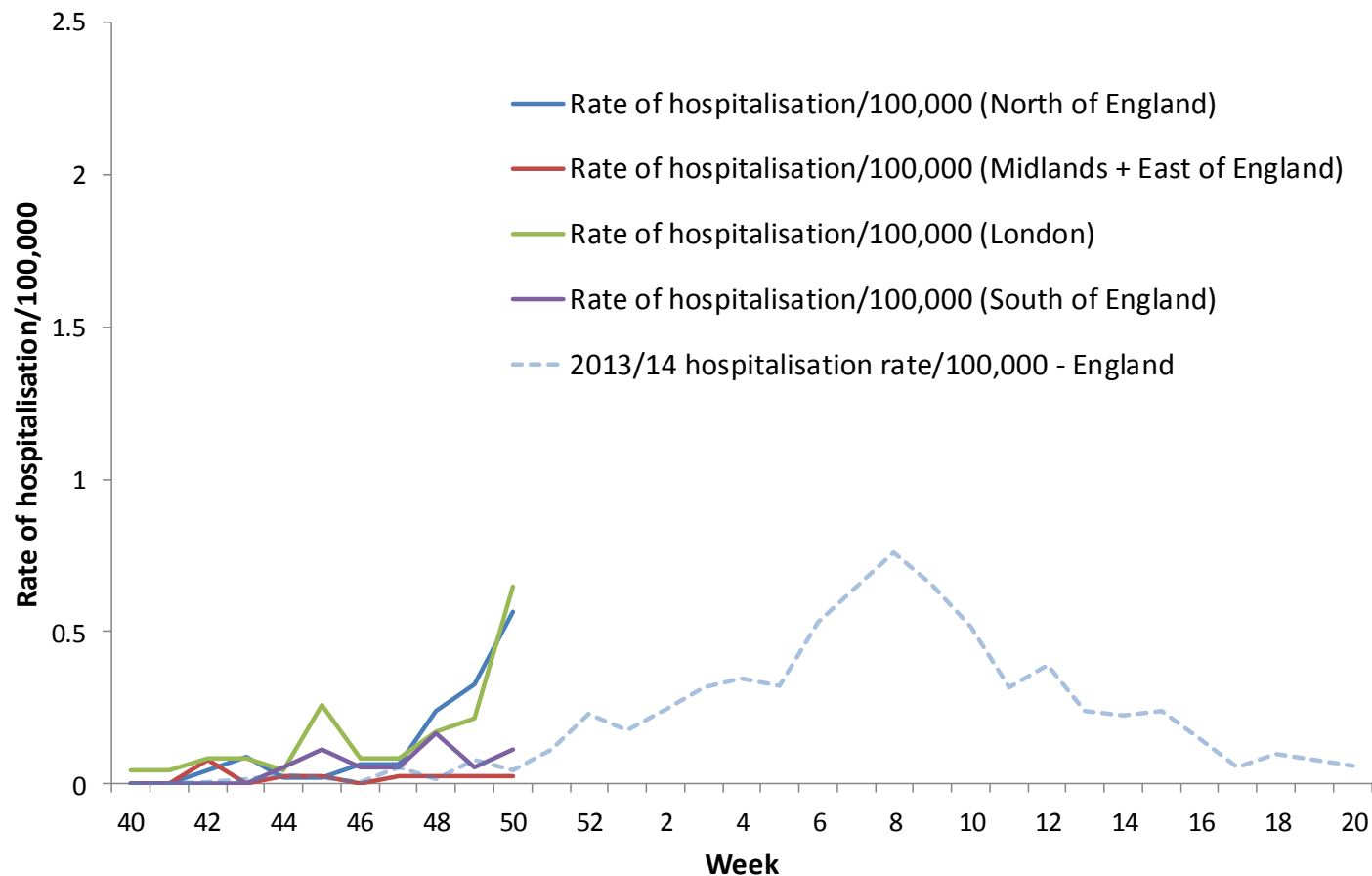


Weekly hospitalised influenza case rate per 100,000 trust catchment population , England, since week 40 2014





Weekly hospitalised influenza case rate per 100,000 trust catchment population by PHE Region, since week 40 2014

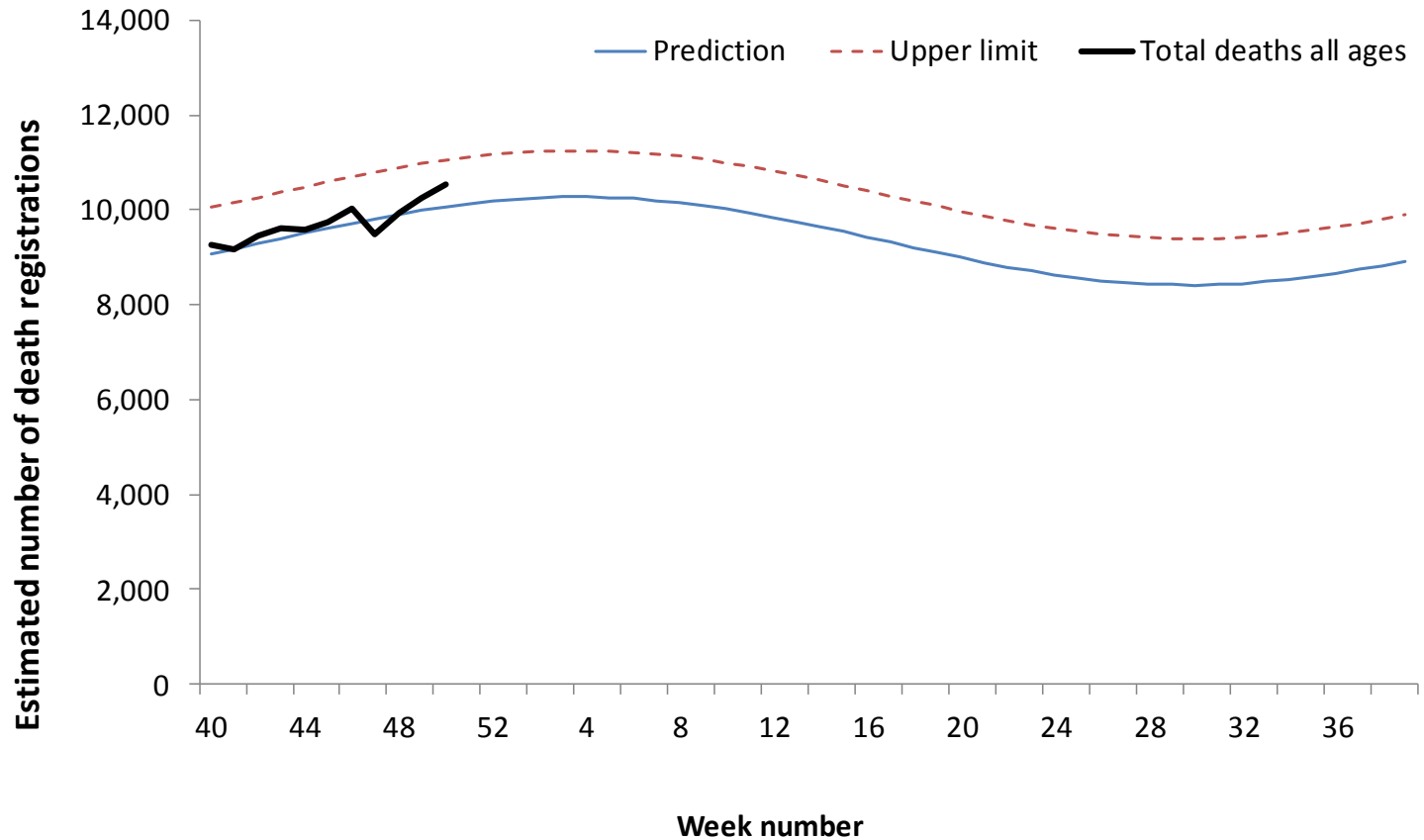




All-cause mortality

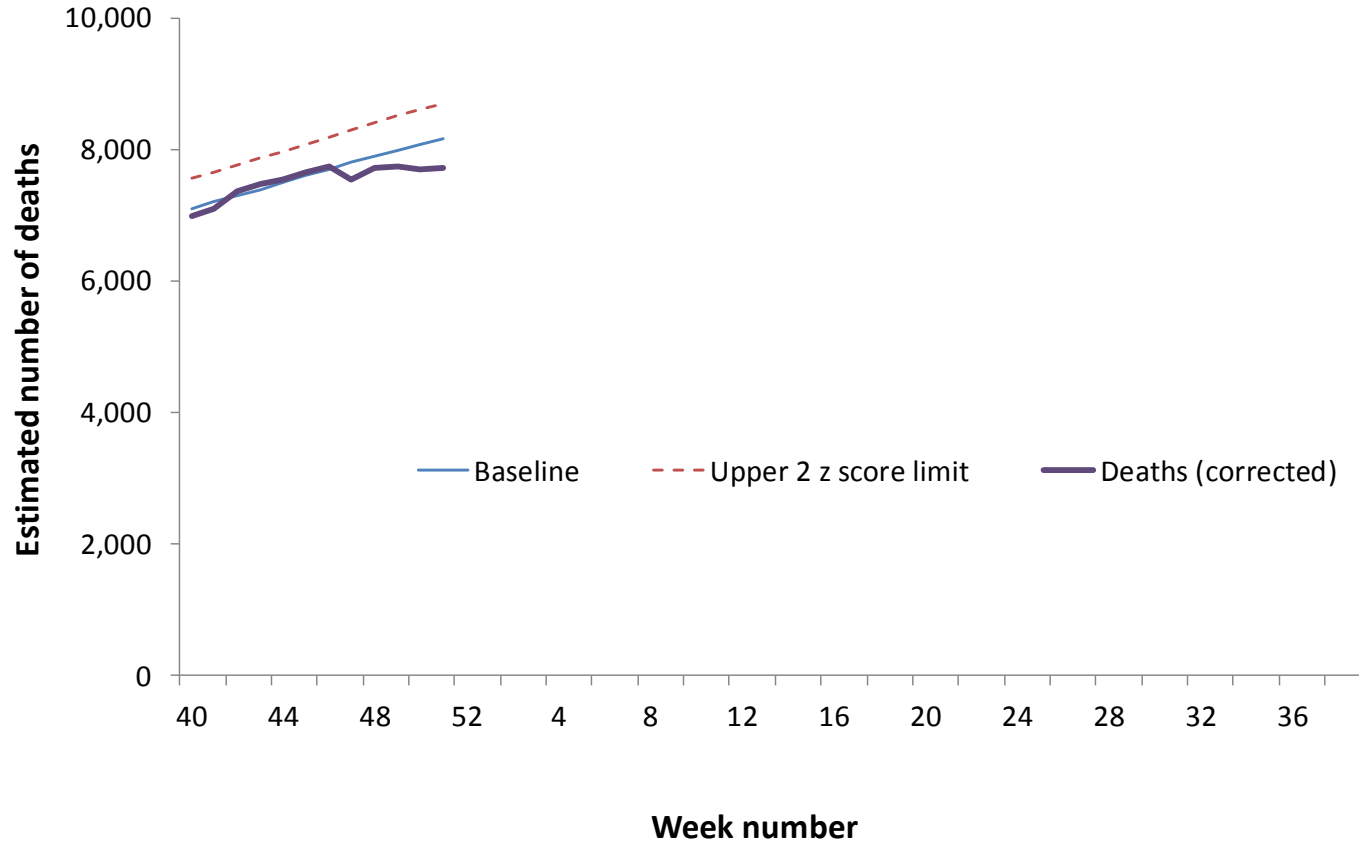


Excess mortality (all causes) by week of registration, all ages, England and Wales



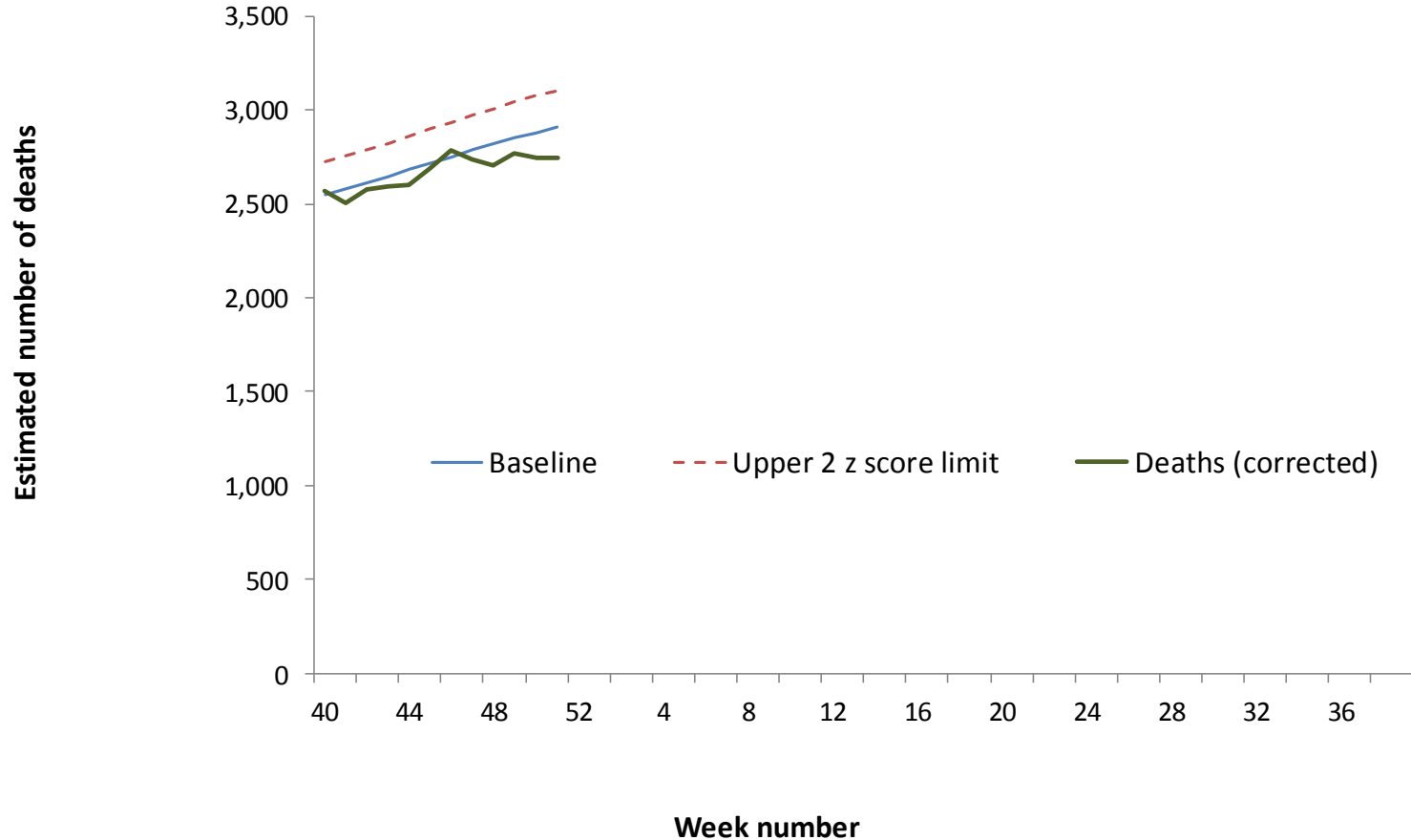


Excess mortality (all causes) by week of death through the EuroMOMO algorithm in 65+ year olds, England



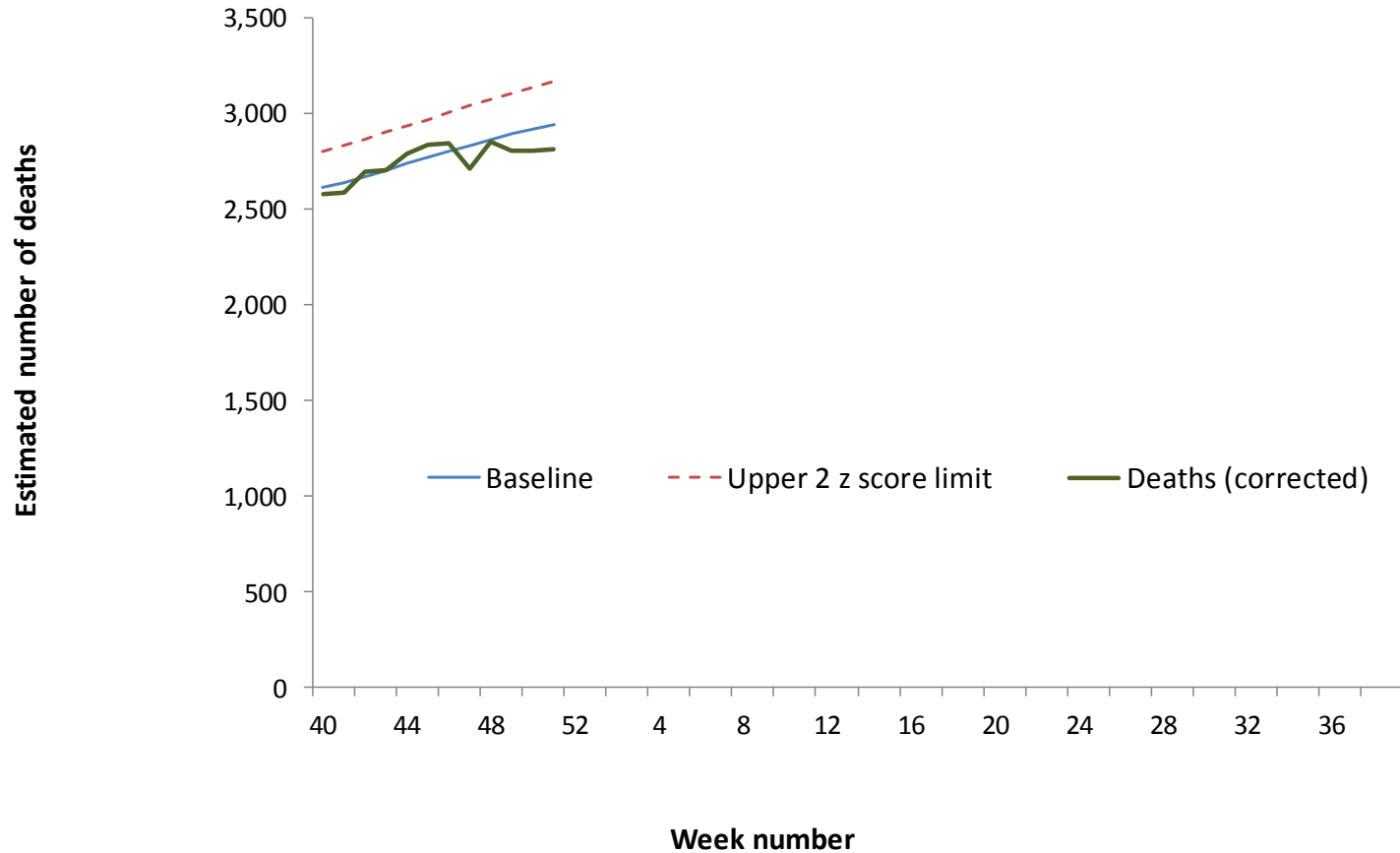


Excess mortality (all causes) by week of death through the EuroMOMO algorithm in 65+ year olds, PHE North of England



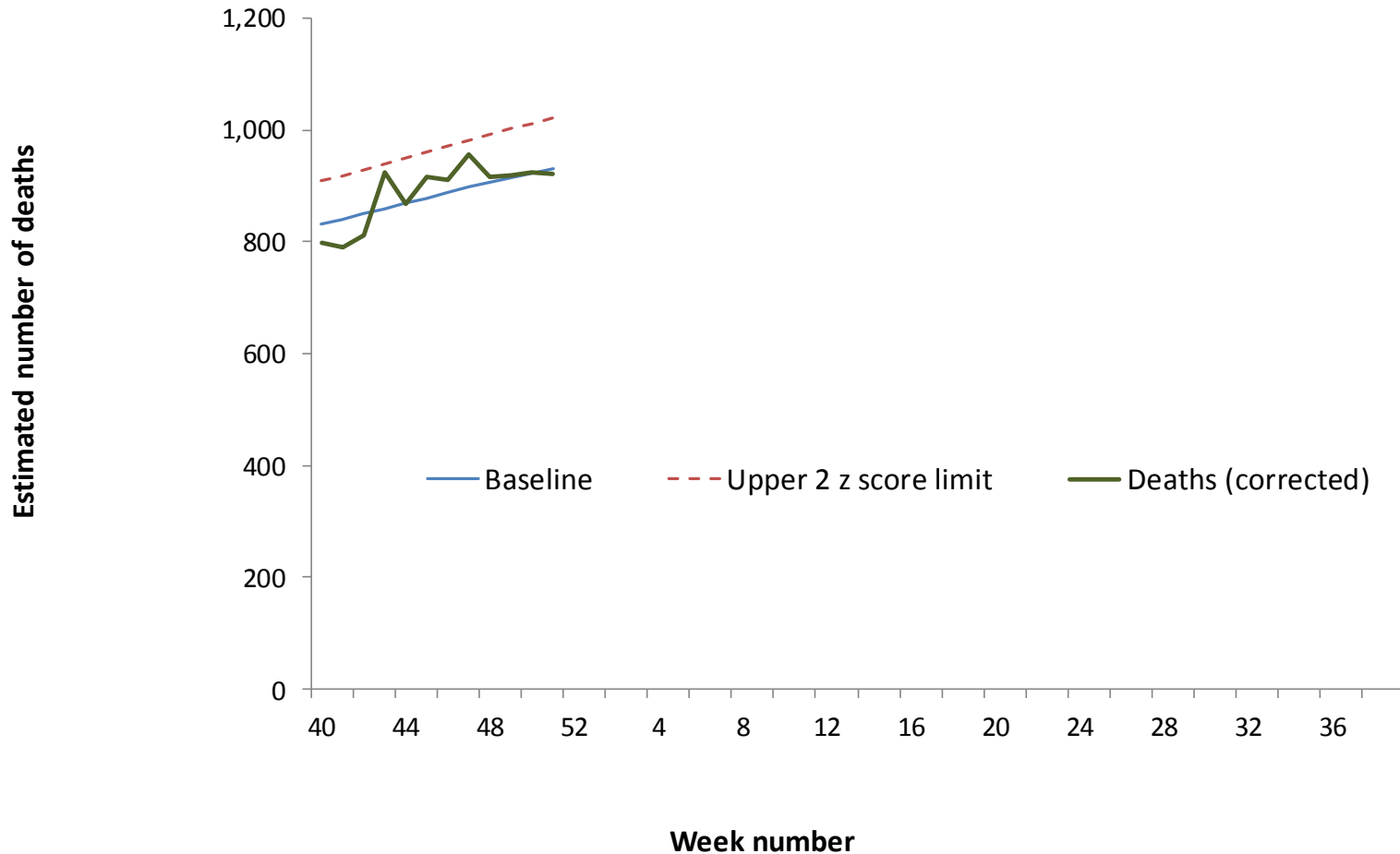


Excess mortality (all causes) by week of death through the EuroMOMO algorithm in 65+year olds, PHE Midlands and East of England



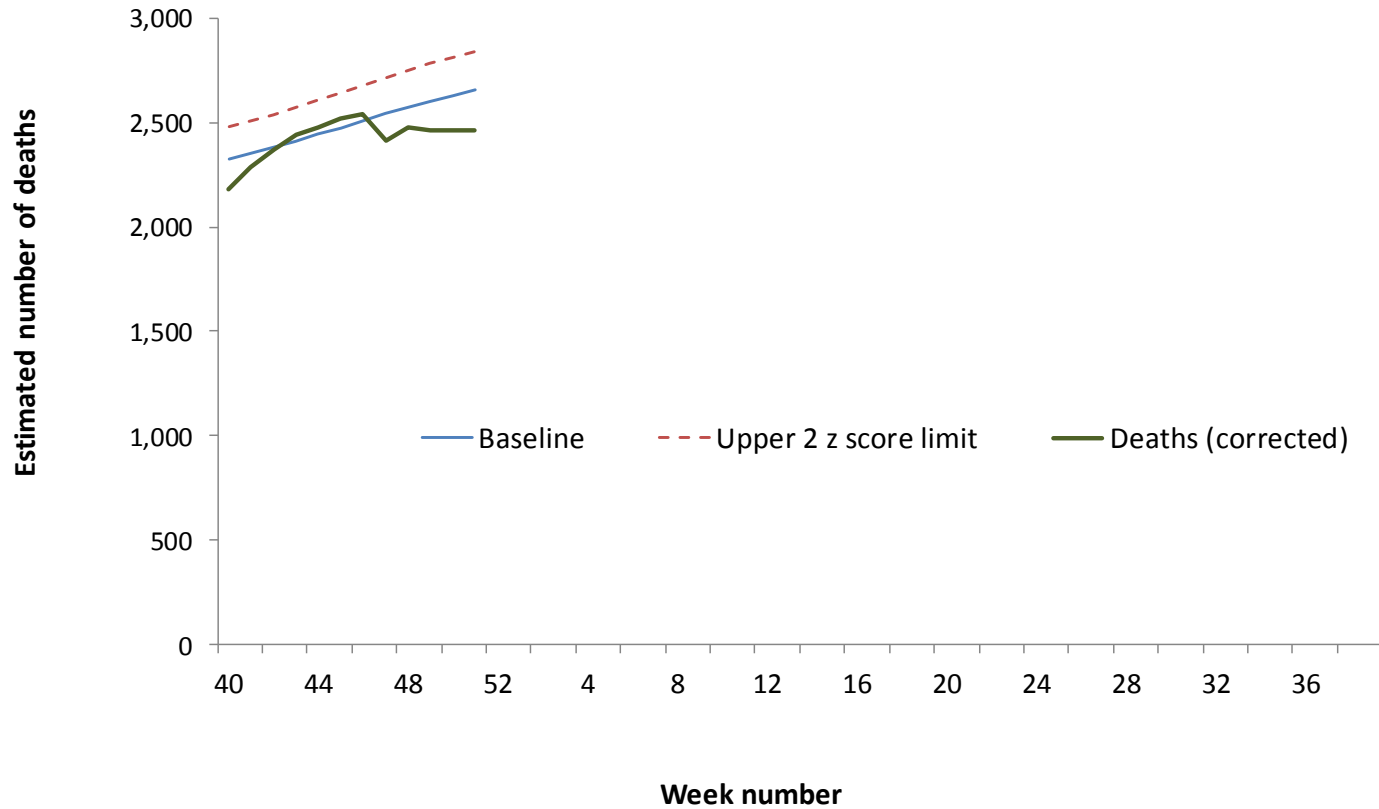


Excess mortality (all causes) by week of death through the EuroMOMO algorithm in 65+ year olds, PHE London





Excess mortality (all causes) by week of death through the EuroMOMO algorithm in 65+ year olds, PHE South of England

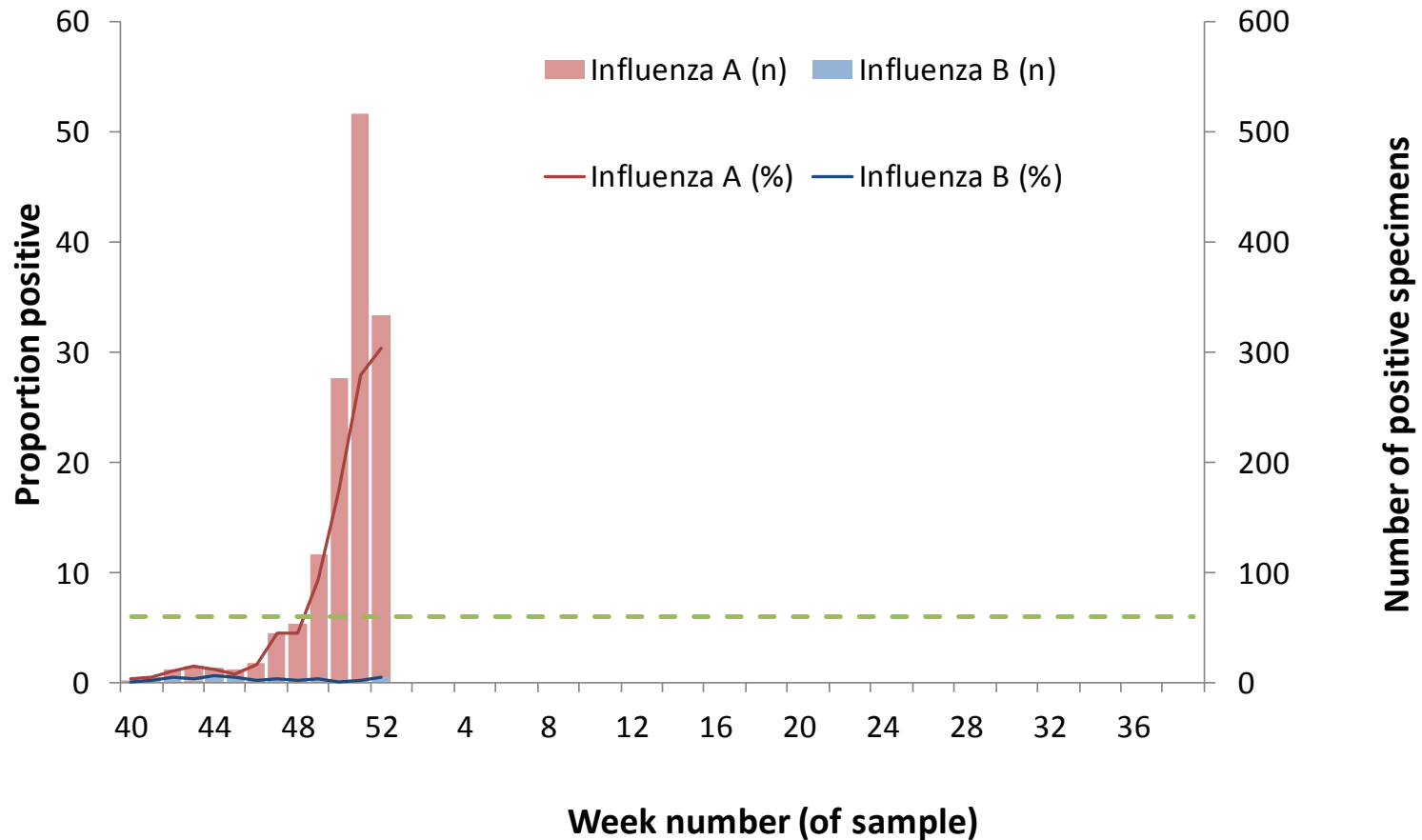




Microbiological surveillance

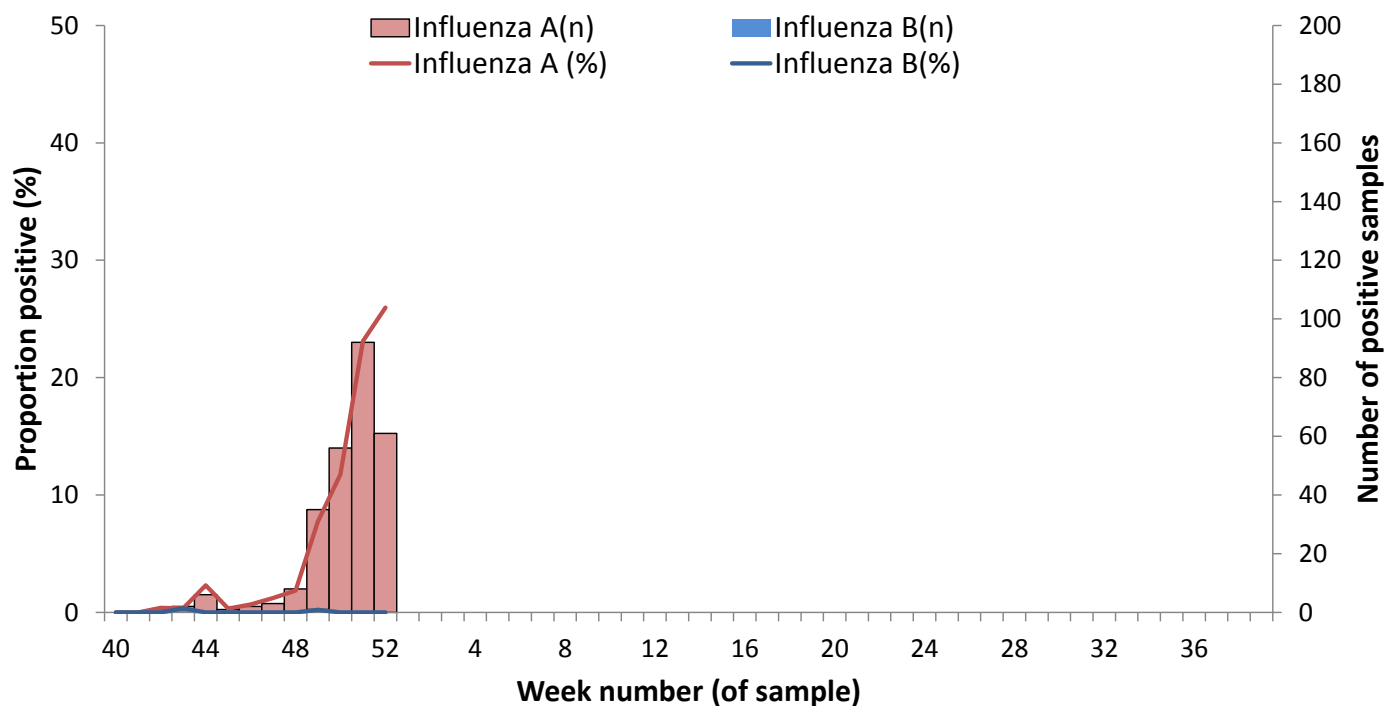


DataMart: Number and proportion of samples positive for influenza, by type, England



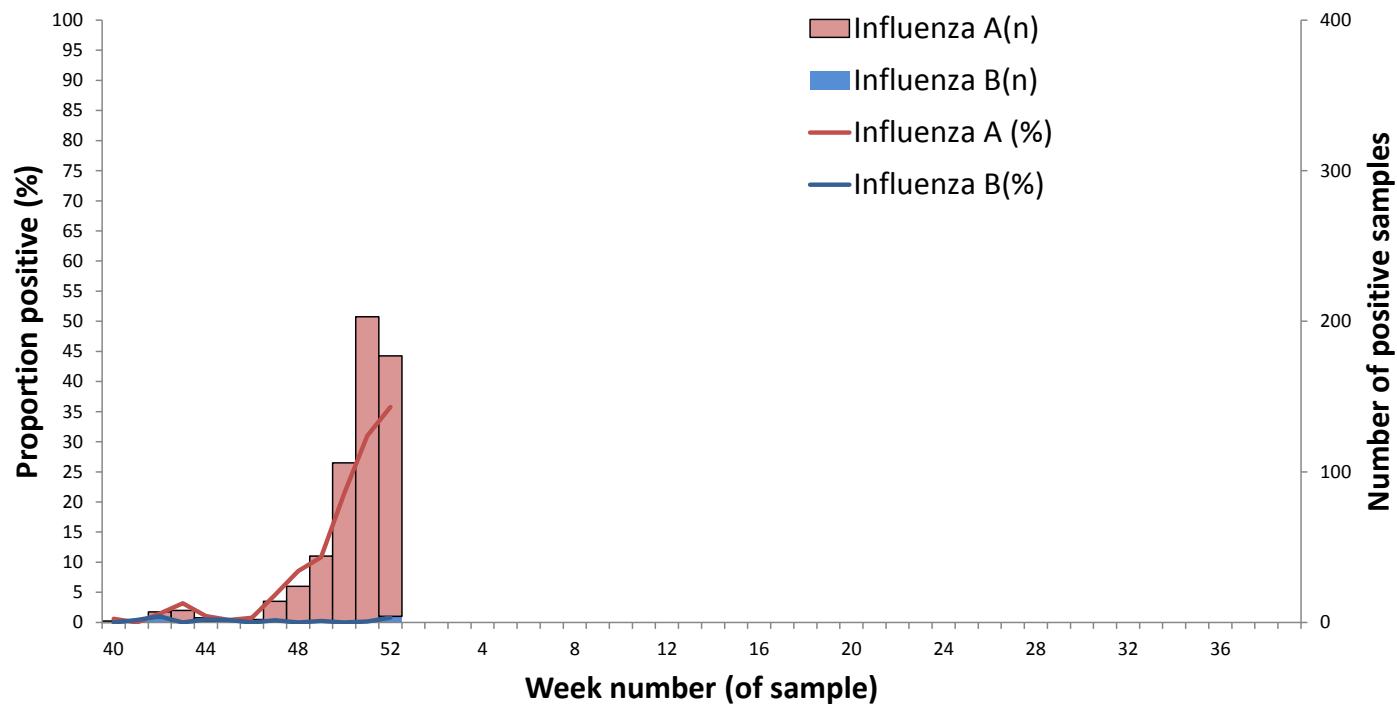


DataMart: Number and proportion of samples positive for influenza, by type, PHE North of England



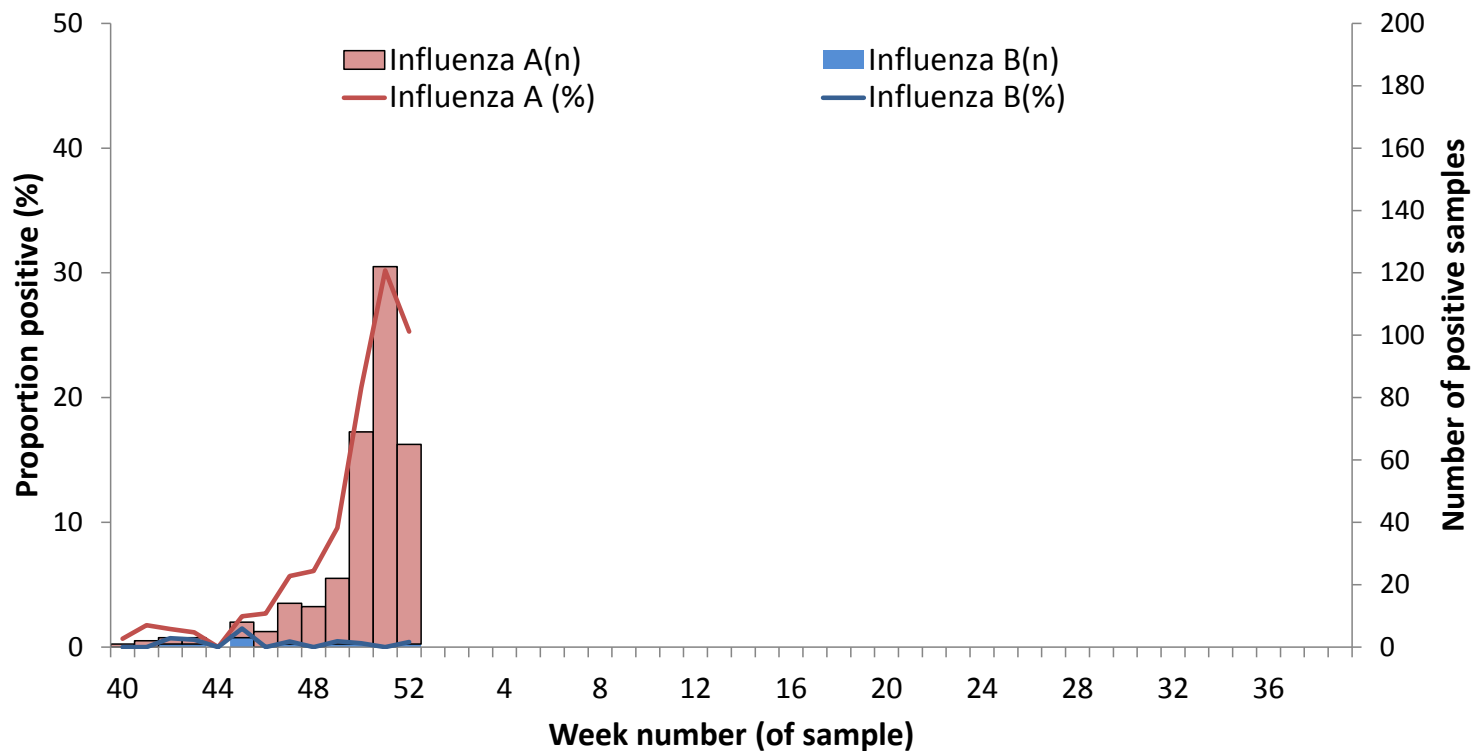


DataMart: Number and proportion of samples positive for influenza, PHE Midlands and East of England



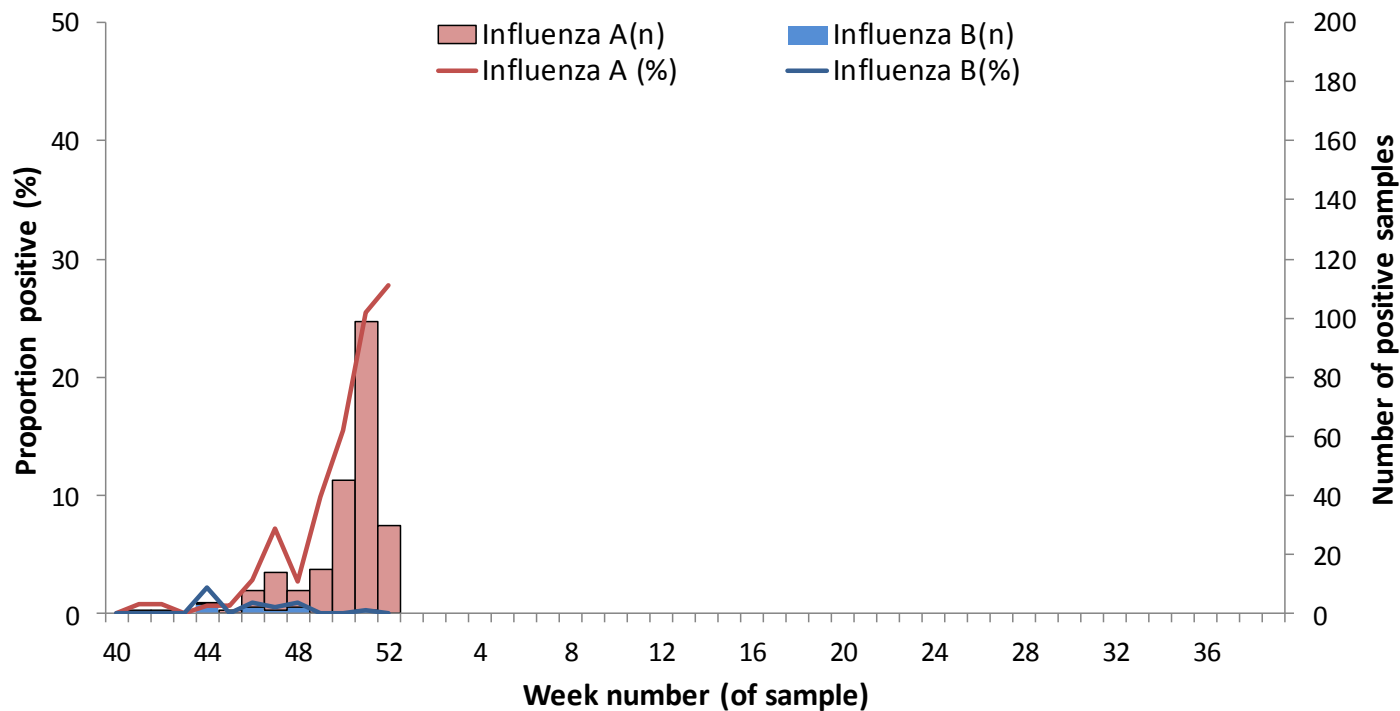


DataMart: Number and proportion of samples positive for influenza, by type, PHE London



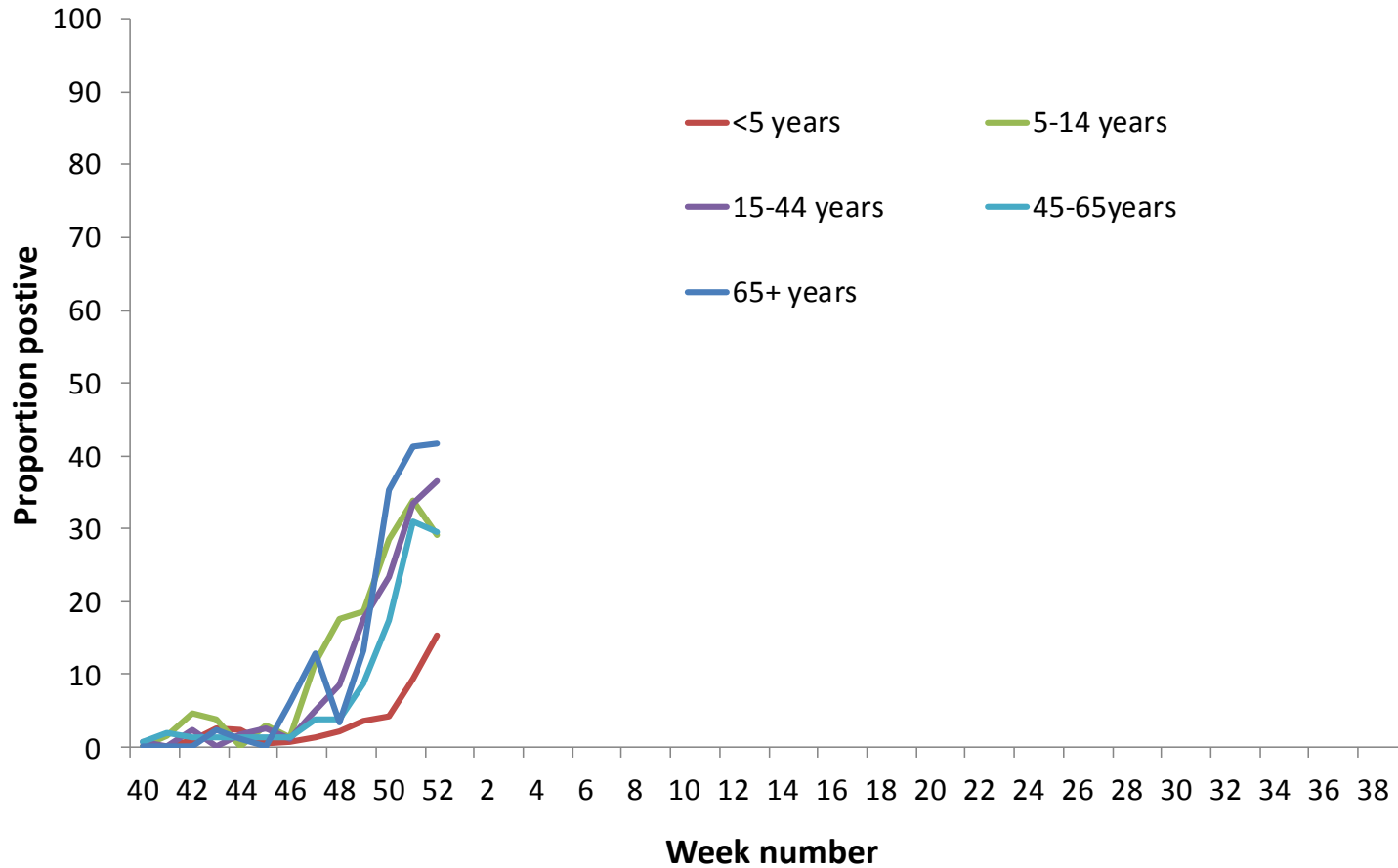


DataMart: Number and proportion of samples positive for influenza, by type, PHE South of England



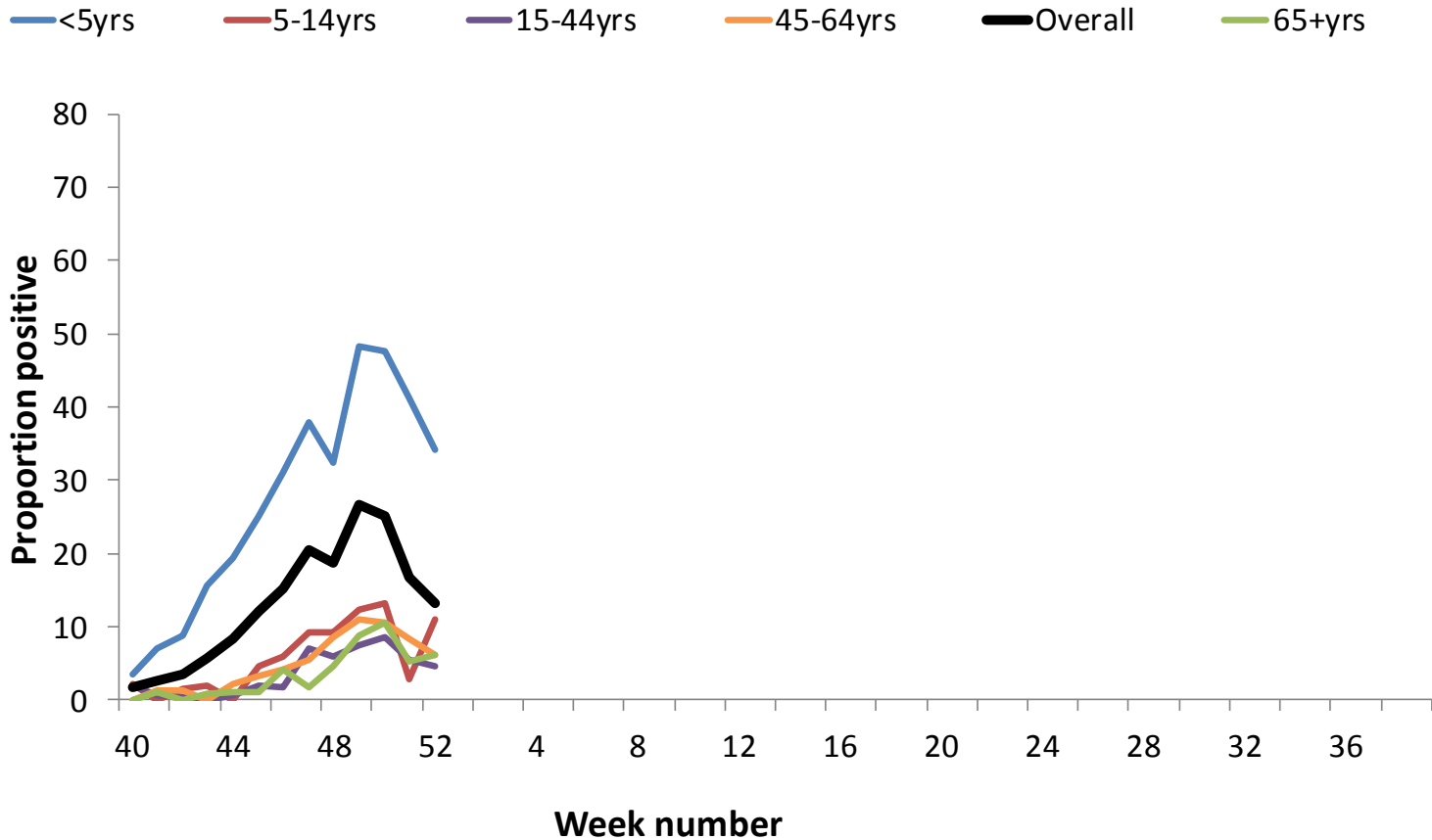


DataMart: Proportion of samples positive for influenza, by age group



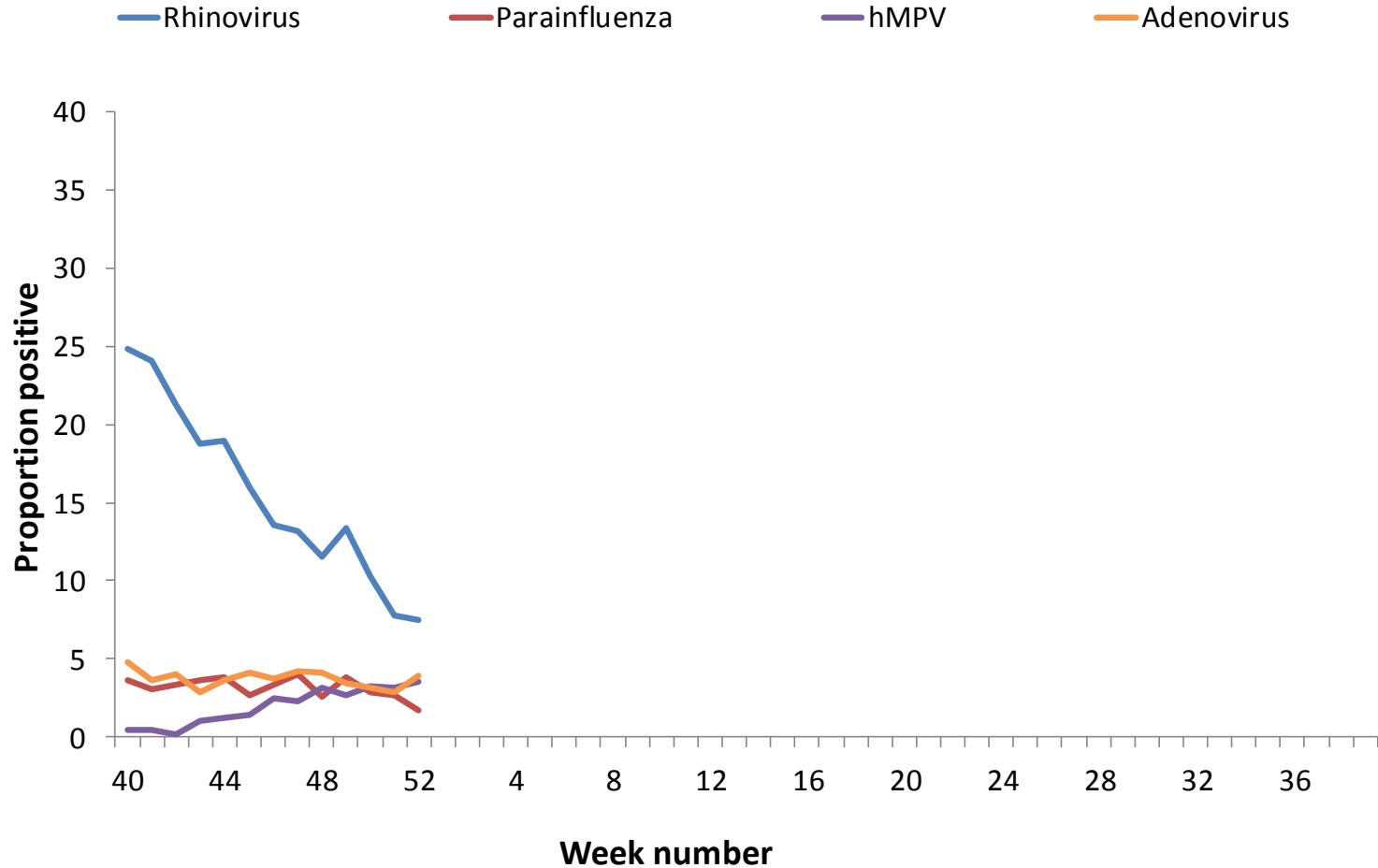


DataMart: Proportion of samples positive for RSV, by age group





DataMart: Number and proportion of samples positive for other viruses



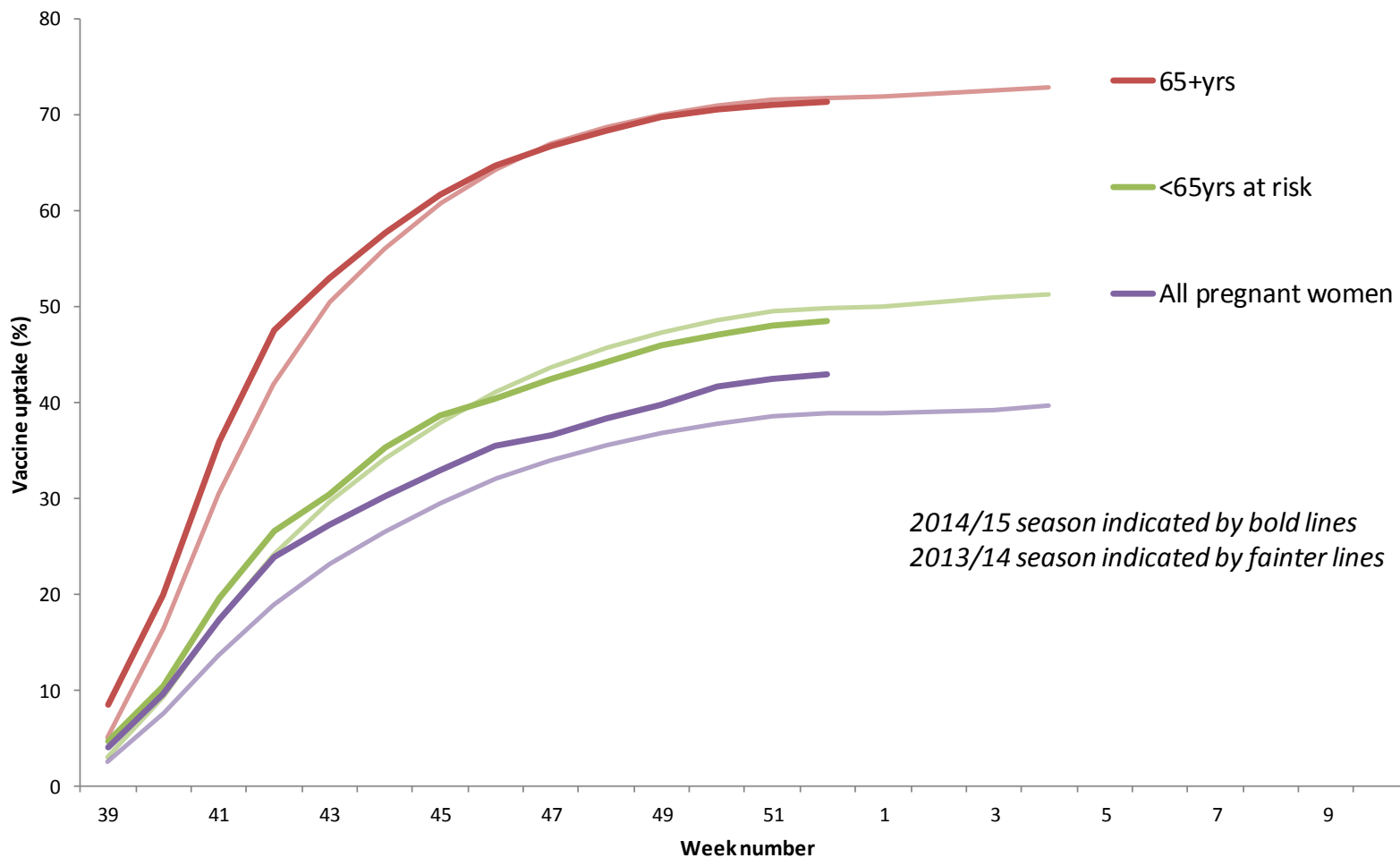


Public Health
England

Influenza vaccination



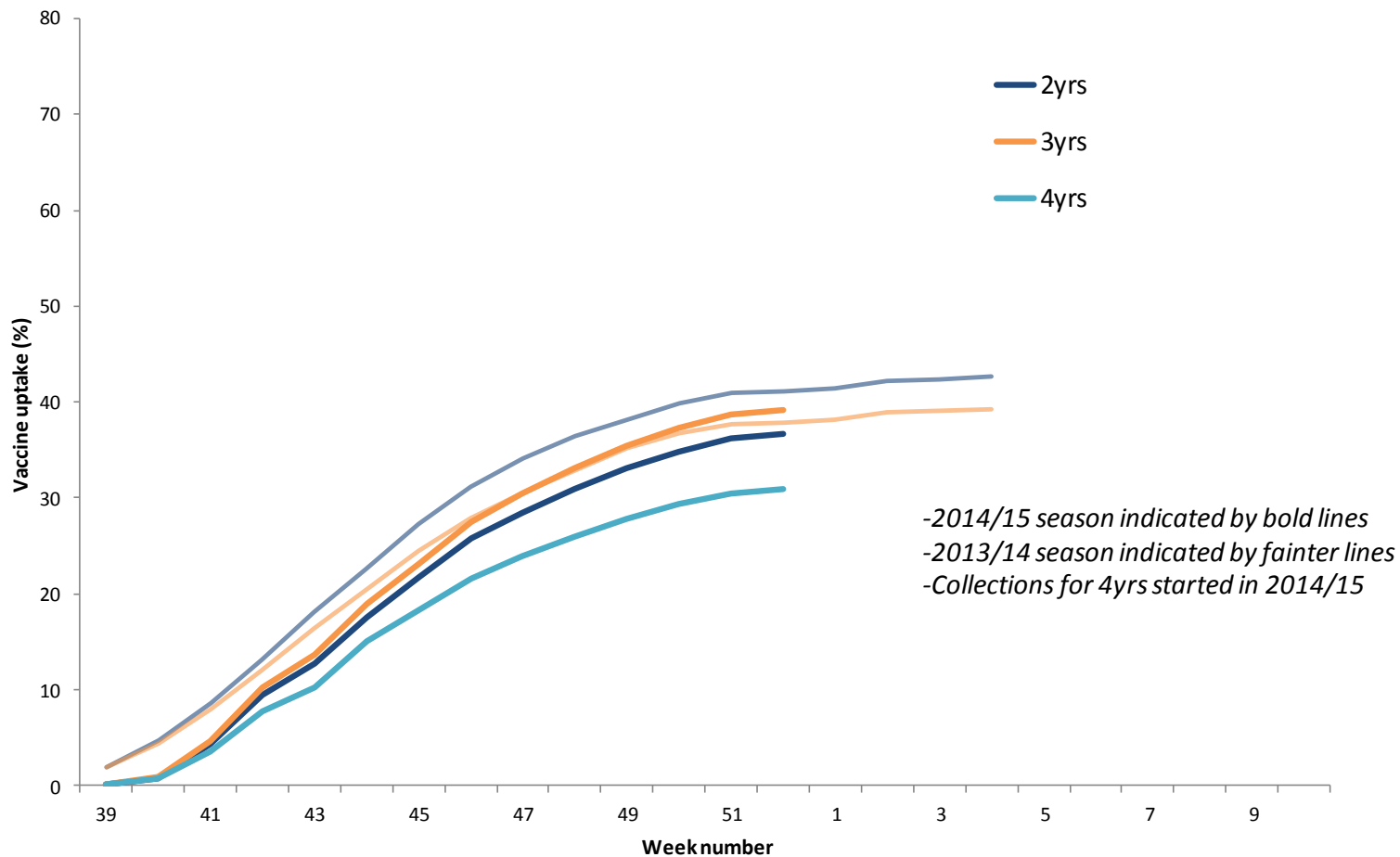
Seasonal influenza vaccine uptake in targeted groups, 2014/15, England



*2014/15 season indicated by bold lines
2013/14 season indicated by fainter lines*



Seasonal influenza vaccine uptake in targeted groups, 2013/14, England





Links

- Sources of UK flu surveillance data:

<https://www.gov.uk/sources-of-uk-flu-data-influenza-surveillance-in-the-uk>

- Weekly flu report

<https://www.gov.uk/government/statistics/weekly-national-flu-reports>