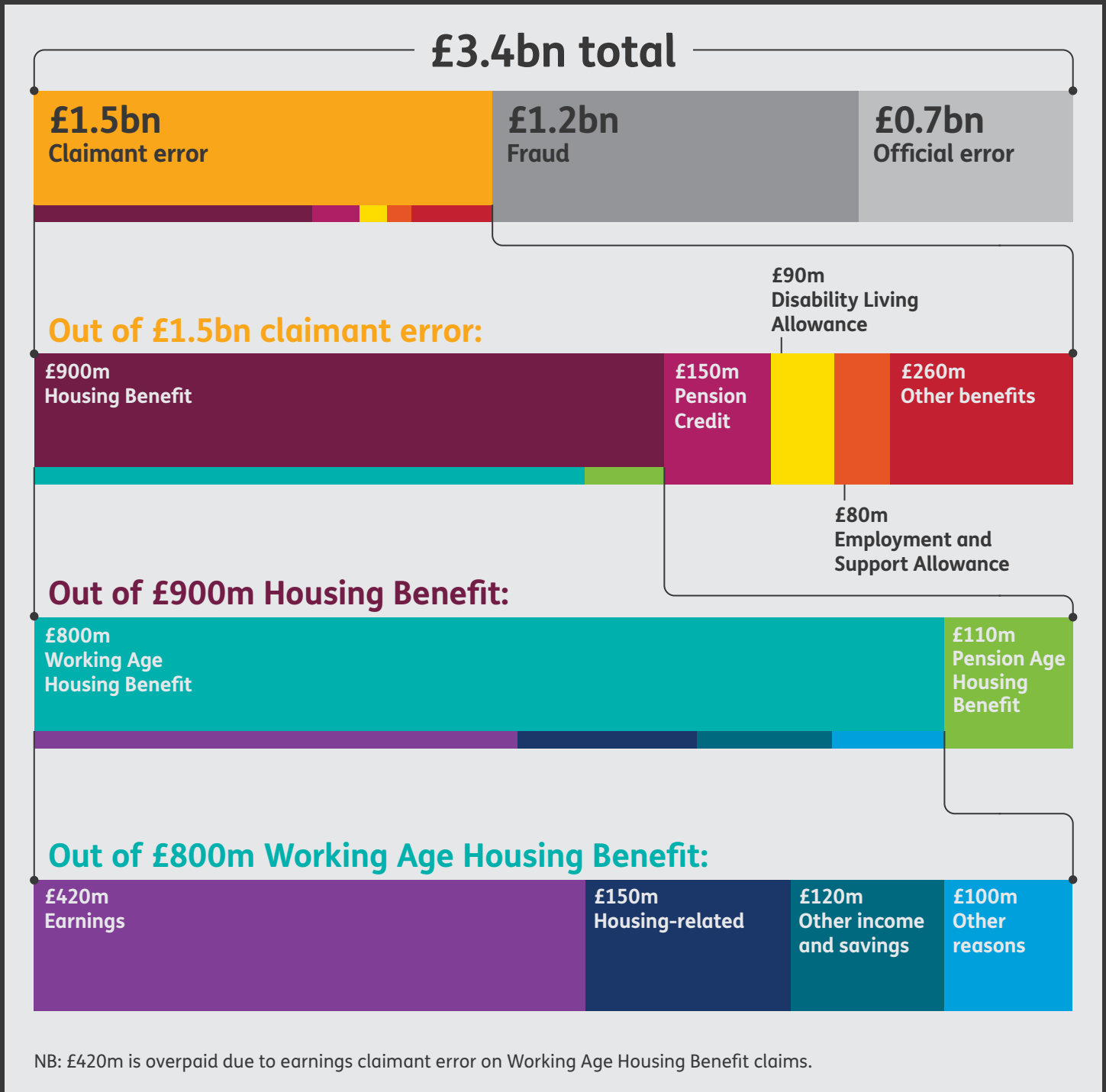




FOCUS: FRAUD AND ERROR OVERPAYMENTS



Components may not sum due to rounding. Fraud and error figures are estimates for 2013/14 covering April 2013 - March 2014. Expenditure is based on 2013/14 financial year total.

More information can be found at:
<https://www.gov.uk/government/collections/fraud-and-error-in-the-benefit-system>

Not all benefits are measured for fraud and error. Estimates of fraud and error in these 'Other Benefits' are based on proxy measurements from similar benefits.

For enquiries please contact:
Catherine Edwards
Telephone: 0191 216 6840
Email: caxtonhouse.femaenquiries@dwp.gsi.gov.uk