

1

2

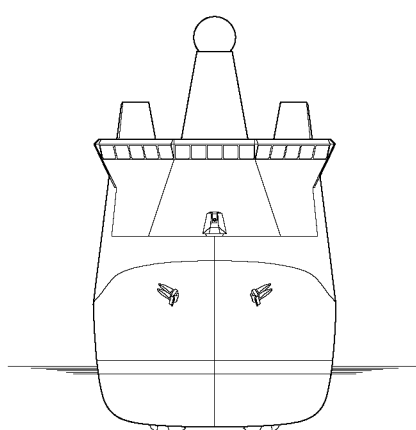
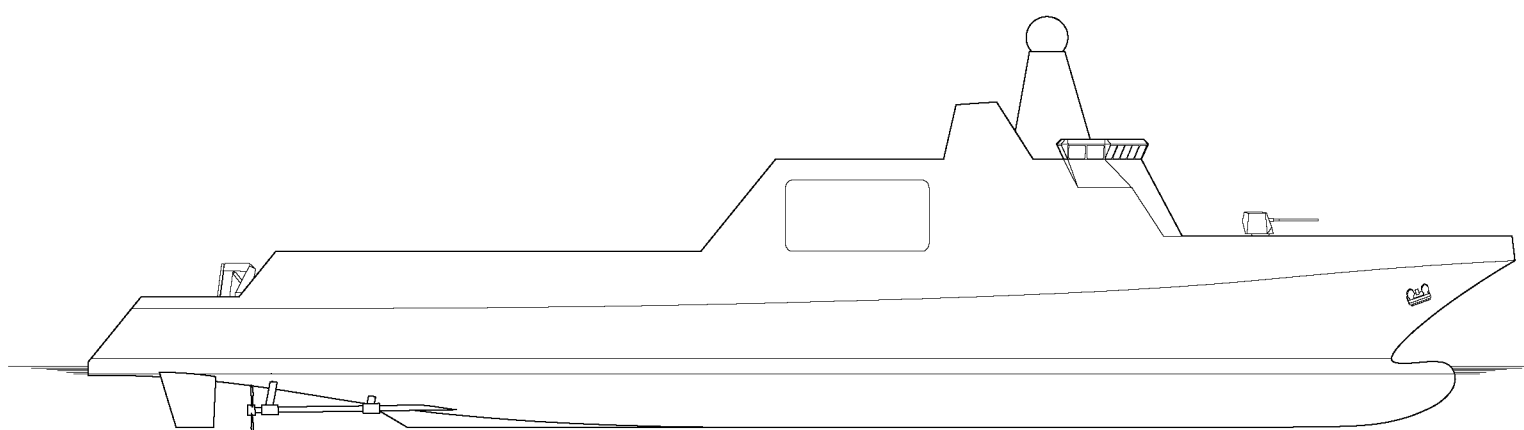
3

4

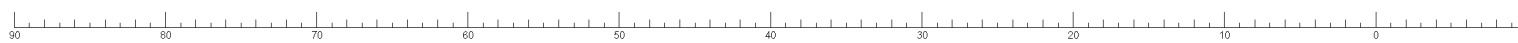
5

0 100 MILLIMETERS FULL SIZE

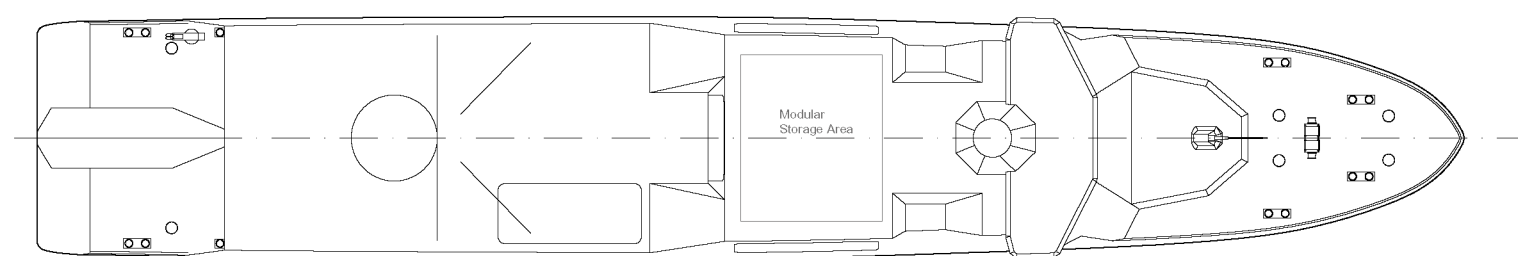
A



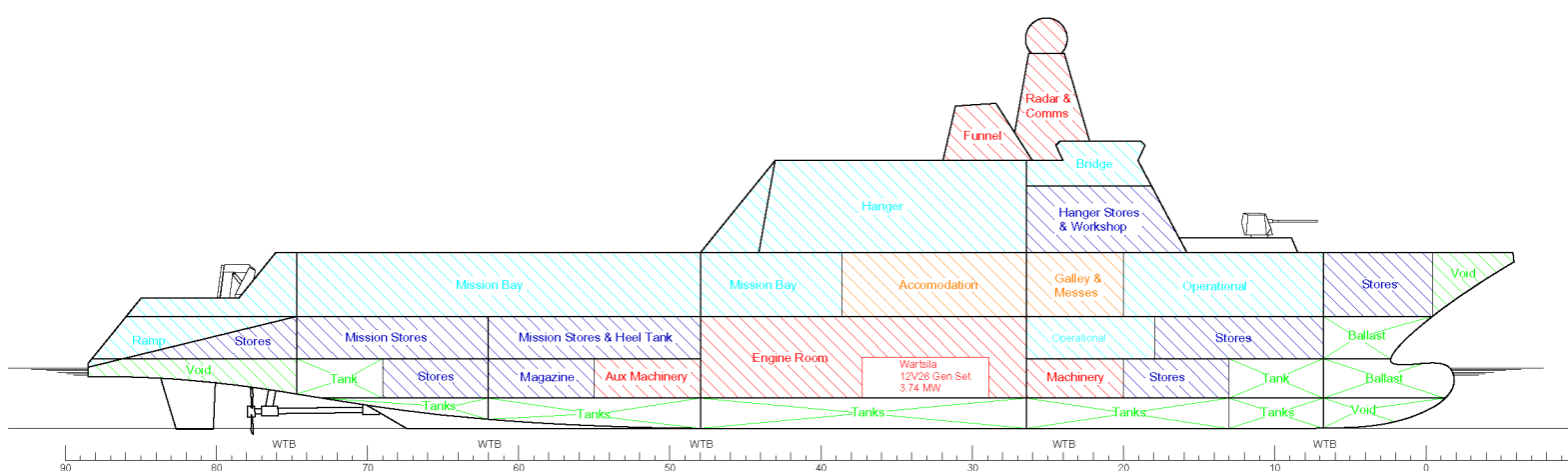
B



C

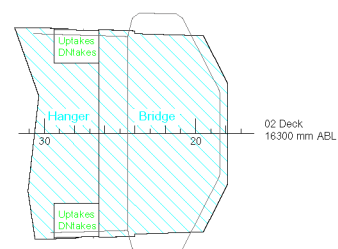
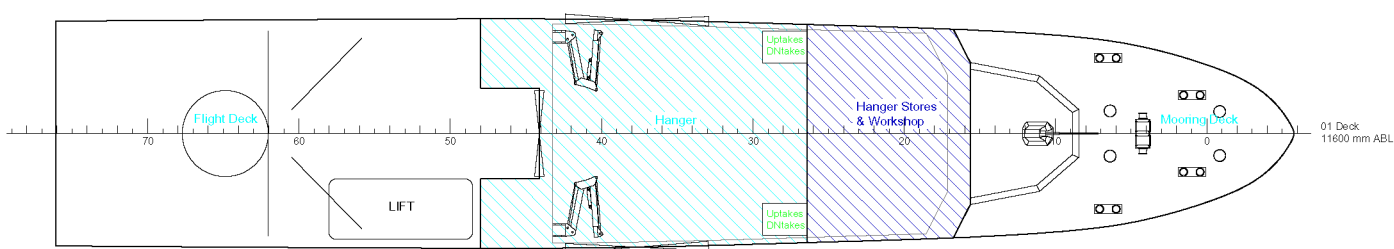


D

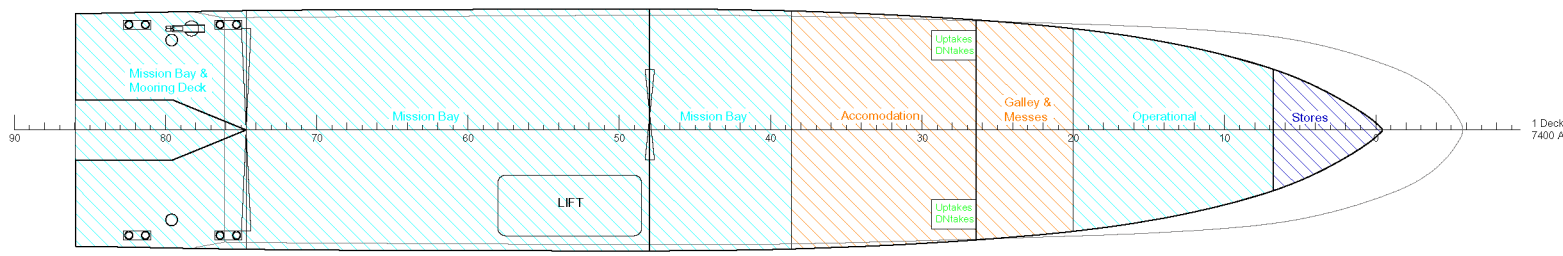


- 02 Deck 16300 mm ABL
- 01 Deck 11600 mm ABL
- 1 Deck 7400 ABL
- 2 Deck 4600 mm ABL
- 3 Deck 2000 mm ABL
- Base Line

E



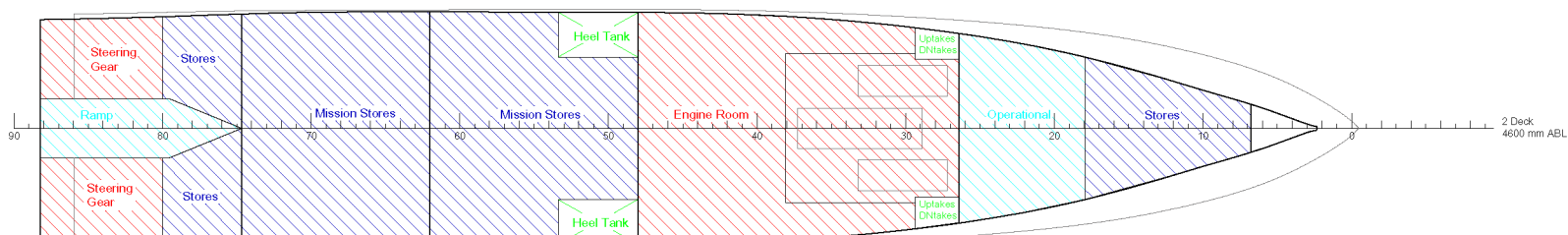
F



General Particulars

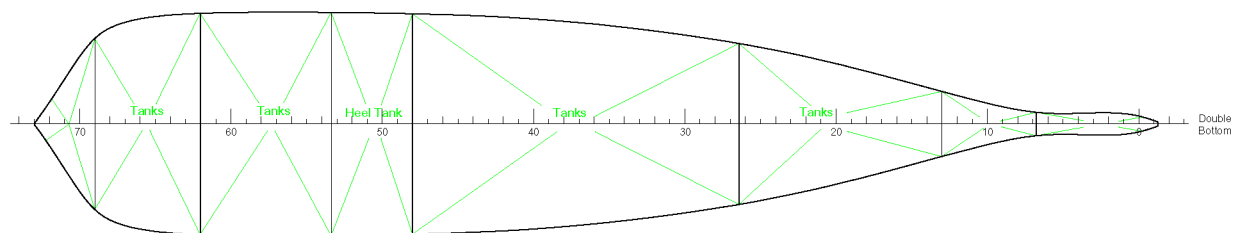
Length Overall	95 m
Length Waterline	90 m
Beam Moulded	15.5 m
Depth Moulded	11.6 m
Design Waterline Draft	4.0 m

G



- Key
- Accomodation Space
 - Command and Control
 - Machinery Space
 - Stores and Magazines
 - Tanks, Voids and Ballast

H



Double Bottom