

# **Monthly Statistics of Building Materials and Components**

February 2011

No. 432

## NOTES

In tables where figures have been rounded to the nearest final digit, there may be an apparent slight discrepancy between the sum of the constituent items and the total as shown.

Symbols. The following symbols have been used throughout.

.. = not available (P) = provisional

- = nil or negligible (R) = revised

All figures are subject to revision.

Unless otherwise stated, revisions are due to more complete information from late returns. For any major revisions an explanation will be provided.

### **A National Statistics publication**

National Statistics are produced to high professional standards set out in the National Statistics Code of Practice. They undergo regular quality assurance reviews to ensure they meet customer needs.

Unless otherwise stated, the statistics published in this volume have been collected by the Office for National Statistics on behalf of the Department for Business, Innovation & Skills.

Lead Statistician: Tony Wilkins

For enquiries or further information about the contents of this publication please contact:

Construction Market Intelligence, 1 Victoria Street,  
London, SW1H 0ET;  
Telephone : 020 - 7215 - 1555 Fax : 020 - 7215 - 6910  
E-mail : [materialstats@bis.gsi.gov.uk](mailto:materialstats@bis.gsi.gov.uk).

URN 11/313b

2 March 2011

ii

## CONTENTS

	<u>Page</u>
Table 1 : Construction Material Price Indices	1
Table 2 : Price Indices of Construction Materials – monthly	2 & 3
Table 3 : Price Indices of Construction Materials – annual averages	4
Table 4 : Sales of Sand and Gravel in Great Britain	5
Table 5 : Sales of Sand and Gravel by English Regions, Wales and Scotland	6 & 7
Table 6 : Sales of Sand and Gravel by English and Welsh Counties and Scottish Regions	8 & 9
Table 7 : Slate : Production, Deliveries and Stocks	10
Chart 1 : Deliveries of Sand & Gravel and Ready-Mixed Concrete	11
Table 8 : Cement and Clinker : Production, Deliveries and Stocks	12
Chart 2 : Deliveries of Bricks, Concrete Building Blocks and Cement	13
Table 9 : Bricks : Production, Deliveries and Stocks for Great Britain	14 & 15
Table 10 : Bricks : Production, Deliveries and Stocks by English Regions, Wales and Scotland	16 to 19
Table 11 : Concrete Building Blocks : Production, Deliveries and Stocks for Great Britain	20 & 21
Table 12 : Concrete Building Blocks : Production, Deliveries and Stocks by English Regions, Wales and Scotland	22 & 23
Table 13 : Concrete Roofing Tiles; Fibre Cement Products; Ready-Mixed Concrete	24
Chart 3 : Comparison of Imports and Exports	25
Table 14 : Value of Overseas Trade in Selected Materials and Components for Constructional Use : Imports (cif) and Exports (fob)	26 to 35



**Table 1: Construction Material Price Indices**

United Kingdom	2005 = 100					
	2006	2007	2008	2009	2010	2011
<b>(a) New Housing</b>						
January	101.6	109.8	115.3	119.7	122.3	130.5 (P)
February	102.6	111.7	116.8	120.6	122.9	
March	103.4	112.4	117.5	120.6	123.4	
April	103.6	112.3	118.2	120.2	125.2	
May	104.6	113.7	119.0	119.8	127.2	
June	105.8	114.4	118.7	119.5	128.3	
July	106.5	115.2	120.0	119.1	129.0	
August	107.6	116.3	120.5	120.2	129.5	
September	107.7	116.3	120.4	121.0	129.9	
October	108.8	116.4	121.1	121.7	129.8	
November	109.5	116.0	120.4	122.6	130.5 (P)	
December	110.0	115.8	119.7	122.3	130.2 (P)	
Annual Average	106.0	114.2	119.0	120.6	127.4 (P)	
<b>(b) Other New Work</b>						
January	100.5	110.1	114.3	122.9	124.6	134.8 (P)
February	101.7	111.7	116.2	122.1	125.0	
March	102.7	112.1	117.3	121.6	125.9	
April	103.1	112.0	119.2	120.7	129.4	
May	104.4	112.9	121.6	120.7	132.0	
June	105.6	113.3	123.7	120.7	133.8	
July	106.8	113.9	126.4	120.7	133.1	
August	108.3	114.8	127.7	120.9	132.8	
September	108.7	114.4	128.6	121.8	132.9	
October	109.5	114.5	129.3	123.5	132.5	
November	109.6	114.0	126.6	125.3	133.9 (P)	
December	109.9	113.6	124.7	125.0	133.7 (P)	
Annual Average	105.9	113.1	123.0	122.2	130.8 (P)	
<b>(c) Repair and Maintenance</b>						
January	101.6	111.0	116.0	122.1	125.2	134.5 (P)
February	102.4	112.9	117.2	122.0	126.1	
March	103.5	113.5	117.9	121.6	126.4	
April	103.9	113.3	119.2	121.2	128.4	
May	104.8	114.4	120.4	121.0	131.0	
June	106.1	115.3	121.2	120.7	132.2	
July	106.9	116.0	122.9	120.6	132.9	
August	108.5	116.9	123.7	121.7	133.4	
September	109.0	117.2	123.8	122.8	133.7	
October	110.2	117.2	124.7	123.9	133.7	
November	110.8	116.6	123.5	125.2	134.5 (P)	
December	111.4	116.4	122.4	125.0	134.1 (P)	
Annual Average	106.6	115.1	121.1	122.3	131.0 (P)	
<b>(d) All Work</b>						
January	101.2	110.6	115.3	122.5	124.6	133.9 (P)
February	102.1	112.3	116.9	122.0	125.2	
March	103.1	112.8	117.9	121.6	125.9	
April	103.5	112.6	119.2	121.0	128.5	
May	104.7	113.8	121.0	120.9	131.0	
June	105.8	114.3	122.3	120.7	132.6	
July	106.9	114.7	124.4	120.6	132.4	
August	108.4	115.8	125.7	121.1	132.5	
September	108.7	116.0	126.2	122.1	132.5	
October	109.8	116.0	126.9	123.4	132.2	
November	110.2	115.5	125.0	124.9	133.4 (P)	
December	110.6	115.2	123.5	124.7	133.2 (P)	
Annual Average	106.3	114.1	122.0	122.1	130.3 (P)	

Note: These indices are weighted averages of Producer Price Indices. They do not include electrical or mechanical engineering materials.

Source ONS/BIS

# PRICES

**Table 2: Price Indices of Construction Materials**

United Kingdom	2010						
	Jan	Feb	Mar	Apr	May	Jun	Jul
<b>AGGREGATES</b>							
Coated roadstone - including levy	149.0	147.1	145.3	149.2	147.9	153.3	150.7
- excluding levy	148.7	146.6	146.9	150.9	149.7	155.4	152.7
Crushed rock - including levy	103.8	109.1	110.5	108.1	112.7	107.2	120.5
- excluding levy	96.4	103.5	104.8	101.6	107.4	101.0	118.1
Sand & gravel - including levy	109.4	109.0	110.0	110.4	103.0	107.1	107.0
- excluding levy	104.2	103.7	104.9	105.3	96.8	101.6	101.5
<b>CEMENT AND CONCRETE</b>							
Cement	131.6	132.3	133.8	133.8	133.9	133.7	133.4
Ready-mixed concrete	106.5	106.2	111.6	112.5	112.4	111.4	111.3
Plasterboard etc	..	..	..	..	..	..	..
Pre-cast concrete products	117.2	117.8	117.4	116.8	116.8	116.9	117.3
of which : Blocks, bricks, tiles & flagstones	120.8	121.7	121.1	120.2	120.2	120.4	120.8
Concrete reinforcing bars	123.0	126.0	133.1	153.9	157.9	153.0	150.1
<b>CLAY PRODUCTS</b>							
All Bricks	114.5	115.9	118.6	118.9	119.0	119.9	119.6
Ceramic tiles	86.3	86.0	85.9	91.5	91.6	91.4	91.4
Ceramic sanitaryware	133.6	130.3	130.7	136.7	134.8	134.8	135.3
<b>TIMBER AND JOINERY</b>							
Imported hardwood *	..	..	126.8	135.8	136.5	141.8	142.1
Imported softwood *	148.8	148.8	150.2	153.4	157.8	160.0	164.5
Imported plywood *	134.8	138.8	145.4	154.1	162.8	167.0	165.3
Sawn wood	128.9	130.3	128.0	132.8	138.6	131.4	136.6
Particle Board	111.5	112.5	113.4	114.0	115.3	117.6	118.4
Builders woodwork	122.1	123.1	123.0	124.0	124.5	124.7	126.1
of which : Doors & windows	128.5	128.5	128.7	129.8	129.9	130.0	131.8
<b>METAL PRODUCTS</b>							
Fabricated structural steel	99.7	99.5	101.6	110.3	116.9	125.8	130.2
Doors & windows**	90.3	90.4	90.9	89.6	90.6	90.6	90.6
Other Builders Ironmongery *	..	..	..	..	..	..	..
Central heating boilers *	111.4	111.4	111.4	113.8	113.8	113.8	113.8
Central heating pumps *	..	..	..	..	..	..	..
Taps and Valves for sanitaryware *	156.3	156.0	156.0	156.0	159.3	159.5	159.1
Metal sanitaryware *	..	..	..	..	..	..	..
<b>PLASTIC PRODUCTS</b>							
Pipes and fittings (rigid)	120.8	120.9	120.9	120.5	117.2	120.0	120.7
Pipes and fittings (flexible)**	128.3	128.2	128.1	128.1	128.1	129.4	131.8
Sanitaryware	114.5	114.5	114.5	114.5	114.5	114.5	114.5
Doors & windows**	108.1	107.9	107.9	107.9	108.1	107.8	108.0
<b>OTHER BUILDING MATERIALS</b>							
Asphalt products *	159.2	157.2	160.6	161.2	160.3	160.3	161.4
Insulating materials (thermal or acoustic) **	102.4	102.0	105.5	104.6	103.2	102.2	..
Paint (aqueous)	119.2	..	..	..	..	..	..
Paint (non-aqueous)**	112.9	113.6	113.6	113.6	113.6	113.6	113.8
Lighting equipment for buildings*	109.7	109.7	109.7	109.7	109.7	109.7	109.7
Lighting equipment for roads	109.6	109.6	109.8	110.5	110.5	110.5	111.1
Electric heating apparatus	..	..	..	..	..	..	..
Electric water heaters *	134.5	132.2	135.5	135.7	137.5	137.7	137.7
Kitchen furniture	107.4	107.5	107.5	107.5	107.5	110.6	111.4

Notes : 1. Most of these indices, which are compiled by the Office for National Statistics, are a selection of producer price indices.

The complete list is available online at [www.statistics.gov.uk](http://www.statistics.gov.uk), by searching for the reference MM22.

\*The Office for National Statistics state that these Indices are based on relatively few quotes and in the long term should not be relied upon for contractual purposes.

\* \* These index values are considered less reliable mainly due to lack of market coverage.

2005=100

						2011
Aug	Sep	Oct	Nov	Dec	Jan	
						(P)
						AGGREGATES
148.9	149.1	..	..	..	..	Coated roadstone - including levy
150.9	151.2	..	..	..	..	- excluding levy
120.6	120.6	..	..	..	..	Crushed rock - including levy
118.2	118.3	..	..	..	..	- excluding levy
106.0	106.0	..	..	..	..	Sand & gravel - including levy
100.3	100.4	..	..	..	..	- excluding levy
						CEMENT AND CONCRETE
133.3	133.3	133.1	133.2	133.0	133.0	Cement
110.1	110.9	111.1	110.4	111.4	111.8	Ready-mixed concrete
..	..	..	..	..	..	Plasterboard etc
117.2	117.4	118.1	118.1	118.3	119.4	Pre-cast concrete products
120.7	120.8	121.7	121.8	122.1	123.2	of which : Blocks, bricks, tiles & flagstones
149.2	149.4	147.5	144.3 (P)	147.1	152.4	Concrete reinforcing bars
						CLAY PRODUCTS
121.2	120.4	119.8	119.3	118.9	118.3	All Bricks
91.4	91.1	91.1 (P)	91.5 (P)	91.5	91.3	Ceramic tiles
135.3	135.3	135.3	135.3	135.3	138.5	Ceramic sanitaryware
						TIMBER AND JOINERY
141.6	141.9	..	..	..	..	Imported hardwood *
167.2	167.6	..	..	..	..	Imported softwood
164.9	166.2	..	..	..	..	Imported plywood *
137.9	139.7	139.9	138.8	138.4	138.1	Sawn wood
118.7	119.0	120.2	123.3	123.7	124.8	Particle Board
127.1	127.6 (R)	127.6	127.9	128.6	127.7	Builders woodwork
132.1	133.2	132.7	132.4	132.6	132.6	of which : Doors & windows
						METAL PRODUCTS
130.0	128.4	125.8	125.4 (P)	123.5	124.1	Fabricated structural steel
92.1	92.5	92.1	92.1	93.0	93.2	Doors & windows**
..	..	..	..	..	..	Other Builders Ironmongery*
113.7	113.7	114.0	114.2	116.1	117.2	Central heating boilers *
..	..	..	..	..	..	Central heating pumps*
159.1	159.1	159.1 (P)	159.4 (P)	159.5	163.4	Taps and Valves for sanitaryware *
..	..	..	..	..	..	Metal sanitaryware *
						PLASTIC PRODUCTS
123.3	123.7	123.8	123.0	123.5	123.7	Pipes and fittings (rigid)
132.3	132.3	132.3 (P)	132.3 (P)	132.3	132.3	Pipes and fittings (flexible)**
114.5	114.5	115.2	115.2	115.2	115.5	Sanitaryware
108.0	108.0	107.9 (P)	108.8 (P)	108.9	108.6	Doors & windows **
						OTHER BUILDING MATERIALS
164.6	162.9	165.3	163.8	167.8	173.6	Asphalt products *
102.3	102.7	104.2	103.6	103.1	102.9	Insulating materials (thermal or acoustic)**
..	..	..	..	..	..	Paint (aqueous)
113.9	114.1	114.2	115.4	115.5	120.9	Paint (non-aqueous)**
103.9	103.9	104.7	104.7	104.7	105.2	Lighting equipment for buildings*
111.1	111.1	111.1	111.1	111.1	111.8	Lighting equipment for roads
..	..	..	..	..	..	Electric heating apparatus *
138.3	138.4	137.2	137.8	138.4	138.6	Electric water heaters*
111.2	111.2	110.3	108.6	108.6	108.9	Kitchen furniture

Source : ONS

Note: Due to reclassification work by the ONS data for Aggregates and Imported Wood was not available at the time of publication

# PRICES

**Table 3: Price Indices of Construction Materials - Annual Averages**

United Kingdom	2005=100					
	2005	2006	2007	2008	2009	2010 (P)
<b>AGGREGATES</b>						
Coated roadstone - old						
- including levy	100.0	108.2	113.8	130.0	140.8	..
- excluding levy	99.9	107.5	113.7	129.7	140.4	..
Crushed rock - old						
- including levy	98.6	96.1	95.2	103.4	112.3	..
- excluding levy	98.4	94.5	93.6	100.6	108.4	..
Sand & gravel - old						
- including levy	101.2	105.3	109.9	117.5	112.0	..
- excluding levy	100.9	105.7	110.9	116.3	107.5	..
<b>CEMENT AND CONCRETE</b>						
Cement	100.0	108.8	114.7	128.4	138.5	133.2
Ready-mixed concrete	100.6	107.7	106.7	113.4	110.8	110.5
Plasterboard etc	100.1	99.3	101.8	104.7	..	..
Pre-cast concrete products	100.0	102.3	110.6	114.4	118.7	117.4
of which: Blocks, bricks, tiles & flagstones	100.0	103.3	112.8	115.4	121.1	121.0
Concrete re-inforcing bars	100.0	112.9	129.8	158.3	125.9	144.5
Fibre Cement Products	100.1	106.7	116.8	124.2	..	..
<b>CLAY PRODUCTS</b>						
All Bricks	98.0	104.3	111.1	109.0	117.2	118.8
Ceramic tiles	98.7	102.0	84.8	81.0	82.6	90.1
Ceramic sanitaryware	100.1	102.5	112.6	119.9	130.7	134.4
<b>TIMBER AND JOINERY</b>						
Imported Softwood	100.3	107.9	133.6	123.6	127.5	..
Imported Plywood	100.1	100.8	106.5	120.7	124.1	..
Sawn Wood	100.0	103.1	122.0	127.8	118.7	135.1
Particle Board	99.4	102.6	112.7	113.8	111.4	117.3
Builders woodwork	99.4	102.2	108.0	113.6	119.7	125.5
of which						
Doors & windows	99.7	101.7	108.7	116.7	127.1	130.9
<b>METAL PRODUCTS</b>						
Fabricated structural steel	100.0	99.8	118.1	137.2	106.0	118.1
Doors & windows	101.4	101.2	87.5	87.0	89.8	91.2
Screws etc	94.4	106.1	105.9	106.6	..	..
Other builders' ironmongery	99.9	102.4	105.3	108.5	..	..
Central heating boilers	99.9	102.3	105.0	106.3	109.8	113.4
Central heating pumps	100.7	108.2	114.5	120.2	..	..
Taps & valves (domestic)	98.7	..	..	136.6	152.1	158.2
Metal sanitaryware	100.0	103.5	108.3	106.3	..	..
Copper pipes	108.5	168.1	163.2	154.1	..	..
<b>PLASTIC PRODUCTS</b>						
Pipes and fittings (rigid)	99.2	103.9	112.2	118.1	121.4	121.5
Pipes and fittings (flexible)	99.8	104.4	110.6	115.3	129.9	130.3
Sanitaryware	100.2	100.9	102.6	112.0	113.7	114.7
Doors & windows	99.9	101.3	103.5	106.2	107.9	108.1
Floor covering	100.1	107.8	109.8	..	..	..
<b>OTHER BUILDING MATERIALS</b>						
Worked monumental or building stone	100.0	106.3	..	..	..	..
Asphalt products	98.4	120.6	132.2	140.4	151.4	162.1
Insulating materials (thermal or acoustic)	99.9	102.5	106.0	105.6	104.0	103.2
Paint (aqueous)	99.8	101.7	104.6	112.7	118.3	..
Paint (non-aqueous)	99.7	100.8	102.6	110.0	113.0	114.0
Lighting equipment for buildings	100.1	..	..	102.3	107.4	107.5
Lighting equipment for roads	99.5	98.7	100.9	105.2	112.3	110.6
Electric heating apparatus	100.0	101.8	105.4	112.0	..	..
Electric water heaters	100.4	111.6	119.8	122.3	132.6	136.7
Kitchen furniture	100.0	96.7	99.7	103.6	106.6	109.1

Source : ONS

Note : These indices, which are compiled by the Office for National Statistics, are a selection of producer price indices. The complete list is published monthly by HMSO in the Business Monitor MM22.



# MINING AND QUARRYING

**Table 4 : Sales of Sand and Gravel in Great Britain**

Great Britain		Thousand tonnes					
	<b>Sand</b>		<b>Gravel</b>	<b>Sand &amp; Gravel</b>	<b>Sand, Gravel &amp; Hoggin</b>	<b>Sand &amp; Gravel</b>	of which
	for Building	for Concreting	for Concreting & other uses	for Coating	for Fill	Total	<b>Marine-Dredged</b>
2000	12,105	30,128	30,355	2,150	13,127	87,865	14,356
2001	13,926	33,675	36,799	2,596	10,460	97,456	13,611
2002	11,152	30,334	35,642	2,106	6,279	85,513	12,833
2003	11,474	31,349	31,725	1,493	6,498	82,539	12,249
2004	11,017	32,366	30,184	1,380	6,399	81,346	12,996
2005	12,419	30,704	30,648	1,569	5,173	80,513	13,025
2006	9,499	29,893	31,963	2,346	4,195	77,896	13,974
2007	8,649	29,803	31,114	1,695	4,254	75,515	13,777
2008	8,864	28,922	28,297	..	..	74,651	12,582
2009	7,270	21,582	..	..	..	58,482	9,589
2010 (P)	6,068	19,930	..	..	..	54,565	9,359
2004 Q4	2,435	7,590	7,037	410	1,543	19,015	3,121
2005 Q1	3,141	7,180	7,271	376	986	18,954	3,040
Q2	3,467	8,490	8,226	439	1,553	22,175	3,519
Q3	3,246	8,054	8,201	398	1,422	21,321	3,491
Q4	2,565	6,980	6,950	356	1,212	18,063	2,975
2006 Q1	2,189	7,100	7,058	523	919	17,789	2,927
Q2	2,582	8,126	9,032	623	1,174	21,537	4,531
Q3	2,603	7,725	8,602	640	1,144	20,714	3,498
Q4	2,125	6,942	7,271	560	958	17,856	3,018
2007 Q1	2,081	6,919	7,242	443	904	17,589	3,177
Q2	2,305	7,762	8,202	432	1,179	19,880	3,596
Q3	2,304	7,829	8,191	398	1,162	19,884	3,675
Q4	1,959	7,293	7,479	422	1,009	18,162	3,329
2008 Q1	2,151	7,156	7,286	379	1,180	18,152	3,035
Q2	2,385	7,724	7,668	456	2,041	20,274	3,541
Q3	2,279	7,644	7,091	..	..	19,341	3,337
Q4	2,049	6,398	6,252	490	1,695	16,884	2,669
2009 Q1	1,727	5,313	5,330	695	1,566	14,631	2,389
Q2	1,916	5,637	5,756	..	..	15,359	2,637
Q3	1,992	5,598	..	..	..	14,878	2,457
Q4	1,635	5,034	..	..	1,432	13,614	2,106
2010 Q1	1,539	4,952	..	..	..	13,711	2,131
Q2	1,585	4,983	..	..	..	13,940	2,444
Q3	1,584	5,268	..	..	..	14,112	2,592
Q4 (P)	1,360	4,727	..	..	..	12,802	2,192

Note : The figures above are from a quarterly sample inquiry whereas those below are from the Annual Minerals Raised Inquiry, a census.

The two inquiries differ because some respondents are only able to provide estimated information for the quarterly inquiry.

1999	11,356	31,730	31,614	2,585	10,924	88,209	13,424
2000	11,758	31,167	31,797	2,461	12,051	89,234	14,356
2001	11,515	31,656	35,135	2,257	7,647	88,210	13,611
2002	11,190	31,224	32,434	2,031	5,842	82,721	12,832
2003	11,851	31,411	30,236	1,766	4,957	80,221	12,131
2004	10,688	32,529	32,346	2,437	8,058	86,057	12,996
2005	11,558	29,848	32,163	2,172	6,651	82,392	13,024
2006	9,907	29,815	31,002	2,648	6,869	80,242	13,974
2007	9,877	30,202	29,350	2,636	6,436	78,501	13,777
2008	8,527	26,885	23,388	2,222	11,106	72,127	12,621
2009	6,296	21,570	19,553	2,270	6,021	55,709	9,592

# MINING AND QUARRYING

**Table 5 : Sales of Sand and Gravel by Standard region, Wales and Scotland**

	<b>Sand</b>		<b>Gravel</b>	<b>Sand &amp; Gravel</b>	<b>Sand, Gravel &amp; Hoggin</b>	<b>Sand &amp; Gravel</b>	of which
	for Building	for Concreting	for Concreting & other uses	for Coating	for Fill	Total	<b>Marine-Dredged</b>
<u>(a) Q3 2010</u>							
North East	25	..	..	..	17	..	..
Yorkshire & the Humber	127	333	313	526	..	..	..
North West	232	195	..	42	..	497	28
West Midlands	122	556	611	..	..	1,395	0
East Midlands	132	630	561	58	71	1,452	0
East of England	246	840	968	..	187	..	..
South East	202	1,337	1,452	61	202	3,254	2,025
South West	132	548	..	..	285	1,507	127
Wales	161	..	80	..	30	410	191
Scotland	205	534	468	111	134	1,452	0
Great Britain	1,584	5,268	..	..	..	14,112	2,592
of which marine-dredged	162	1,225	..	..	..	2,592	
<u>(b) Q3 2009</u>							
North East	19	..	..	..	..	..	..
Yorkshire & the Humber	204	361	382	5	45	997	5
North West	198	271	28	26	45	568	34
West Midlands	227	738	808	23	60	1,856	0
East Midlands	156	690	689	32	86	1,653	0
East of England	..	..	..	156	..	..	..
South East	..	1,260	..	..	291	3,608	1,917
South West	..	582	..	..	243	1,418	114
Wales	127	190	..	..	..	463	211
Scotland	200	531	443	114	146	1,434	0
Great Britain	1,992	5,598	..	..	..	14,878	2,457
of which marine-dredged	129	1,116	..	..	..	2,457	

Note : Regions refer to Government Office Regions

# MINING AND QUARRYING

Thousand tonnes

	<b>Sand</b>		<b>Gravel</b>	<b>Sand &amp; Gravel</b>	<b>Sand, Gravel &amp; Hoggin</b>	<b>Sand &amp; Gravel</b>	of which
	for Building	for Concreting	for Concreting & other uses	for Coating	for Fill	Total	<b>Marine-Dredged</b>
<b>(c) Annual 2009</b>							
North East	76	..	..	..	..	..	..
Yorkshire & the Humber	659	1,356	1,362	278	198	3,853	53
North West	811	1,055	..	104	..	2,327	132
West Midlands	885	2,855	3,104	..	287	..	0
East Midlands	542	2,630	2,609	114	318	6,213	0
East of England	..	..	..	619	..	..	..
South East	..	4,626	..	..	1,293	14,036	7,318
South West	..	2,314	..	..	987	..	451
Wales	537	..	..	..	..	..	..
Scotland	692	2,150	1,722	425	736	5,725	0
Great Britain	7,270	21,582	..	..	..	58,482	9,589
of which marine-dredged	524	4,200	..	..	..	9,589	
<b>(d) Annual 2008</b>							
North East	204	..	..	..	..	..	..
Yorkshire & the Humber	511	1,839	1,802	..	..	4,604	101
North West	1,070	1,587	..	116	..	..	..
West Midlands	987	3,917	4,071	..	..	9,594	0
East Midlands	725	3,349	2,832	..	..	7,235	0
East of England	902	4,378	4,885	510	2,315	12,990	703
South East	2,255	5,983	8,625	..	..	17,729	9,052
South West	780	..	..	..	..	..	..
Wales	647	..	..	..	..	..	..
Scotland	783	3,089	2,700	511	878	7,961	0
Great Britain	8,864	28,922	28,297	..	..	74,651	12,582
of which marine-dredged	738	5,727	5,816	..	..	12,582	

Note : Regions refer to Government Office Regions

# MINING AND QUARRYING

## Table 6 : Sales of Sand and Gravel by English & Welsh County and Scottish Region

Thousand tonnes

	2009			2010		
	Quarter 2	Quarter 3	Quarter 4	Quarter 1	Quarter 2	Quarter 3
<b>NORTH EAST</b>	..	..	..	..	..	..
Northumberland	97	99	283	238	236	253
Tyne and Wear *	21	22	..	..	..	..
Durham	..	..	..	..	..	..
Cleveland *	..	..	..	..	..	..
<b>YORKSHIRE &amp; THE HUMBER</b>	934	..	822	..	..	..
North Yorkshire (	517	498	429	402	385	434
West Yorkshire (	..	43	34	49	50	53
South Yorkshire	417	216	179	625	628	640
Humberside *	..	..	180	200	..	..
<b>NORTH WEST</b>	615	568	538	509	474	497
Cumbria	153	145	138	143	127	130
Lancashire	77	73	70	69	69	72
Merseyside *	35	35	32	23	19	28
Greater Manchester	76	74	70	69	64	66
Cheshire	274	241	228	205	195	201
<b>WEST MIDLANDS</b>	..	1,856	1,712	1,567	1,426	1,395
Shropshire (	1,319	152	..	128	..	117
Staffordshire (	..	1,196	1,098	1,090	1,007	971
West Midlands	104	..	..	..	..	..
Warwickshire	202	..	193	126	117	..
Hereford & Worcester	196	201	184	..	131	133
<b>EAST MIDLANDS</b>	1,666	1,653	1,484	1,442	1,281	1,452
Derbyshire (	745	..	..	212	188	212
Nottinghamshire (	..	515	464	454	400	449
Leicestershire	287	282	251	221	194	..
Northamptonshire (	634	..	..	58	52	..
Lincolnshire (	..	549	492	497	447	509
<b>EAST OF ENGLAND</b>	2,815	..	..	..	..	..
Cambridgeshire	598	587	519	500	522	551
Norfolk (	800	397	331	368	369	386
Suffolk *	(	..	..	..	..	..
Essex *	..	..	..	..	..	..
Bedfordshire (	539	338	290	270	256	..
Hertfordshire (	..	..	159	165	..	..
<b>SOUTH EAST</b>	3,695	3,608	3,330	3,018	3,161	3,254
Buckinghamshire	124	122	128	107	104	104
Oxfordshire	217	220	200	97	88	80
Berkshire	278	258	316	187	177	176
Greater London *	1,009	945	856	806	820	908
Surrey	253	257	220	229	226	217
Kent *	928	909	779	772	805	836
Sussex East *	..	..	..	..	..	..
Sussex West *	..	..	..	..	..	164
Hampshire *	623	623	575	573	621	623
Isle of Wight	20	20	..	..	..	..

Note : Regions refer to Government Office Regions

\* Includes marine-dredged.

# MINING AND QUARRYING

Thousand tonnes

	2009			2010		
	Quarter 2	Quarter 3	Quarter 4	Quarter 1	Quarter 2	Quarter 3
<b>SOUTH WEST</b>	1,555	1,418	1,265	1,306	1,540	1,507
Gloucestershire	314	273	235	283	339	335
Wiltshire	227	203	175	196	230	226
Avon *	..	..	..	..	..	88
Somerset *	..	..	..	..	..	..
Dorset *	..	..	..	..	..	..
Devon *	..	..	..	..	..	..
Cornwall	..	..	..	..	..	243
<b>ENGLAND</b>	13,312	12,981	11,837	11,709	11,827	12,250
<b>WALES</b>	533	463	448	465	483	410
Clwyd	..	..	..	211	200	154
Gwynedd *	..	..	..	..	..	..
Powys	0	0	0	0	0	0
Dyfed *	..	..	..	..	..	82
Glamorgan West *	..	..	..	..	..	..
Glamorgan South *	..	..	..	..	..	32
Gwent *	105	79	80	74	..	..
<b>SCOTLAND</b>	1,514	1,434	1,329	1,537	1,630	1,452
South of Scotland	136	131	124	96	106	92
North East Scotland	160	145	144	219	223	201
Highlands	135	123	119	134	136	122
Island Areas	21	19	19	12	12	10
East Central Scotland	107	99	97	100	99	88
West Central Scotland	511	501	453	557	593	529
Tayside and Fife	444	416	373	419	461	410
<b>GREAT BRITAIN</b>	15,359	14,878	13,614	13,711	13,940	14,112

Note : Regions refer to Government Office Regions

\* Includes marine-dredged.

# MINING AND QUARRYING

## Table 7 : Slate - Production, Deliveries and Stocks

Great Britain

Tonnes

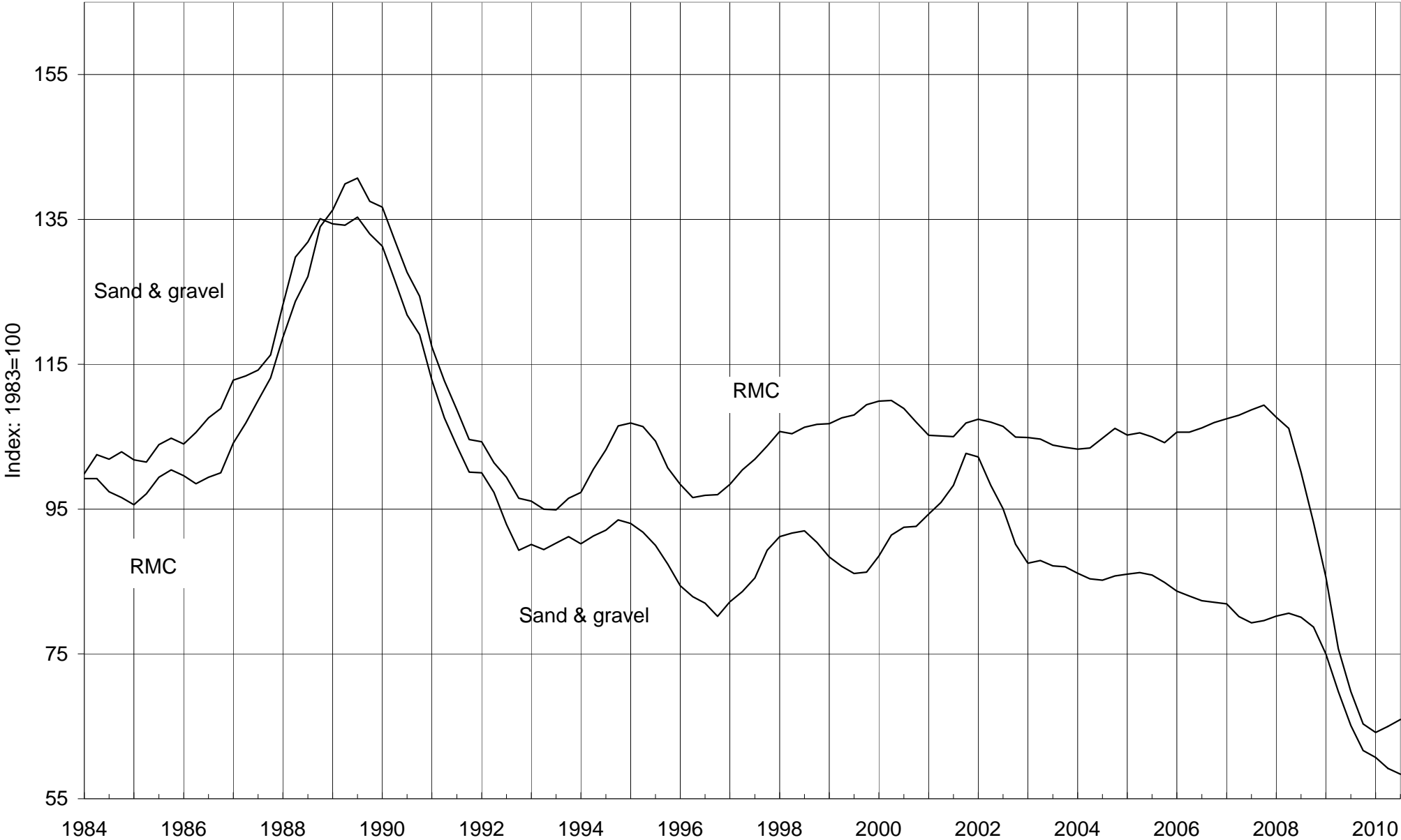
	Production			Deliveries			Stocks (a)			Deliveries
	Roofing (b)	Other (c)	Powder & Granules	Roofing (b)	Other (c)	Powder & Granules	Roofing (b)	Other (c)	Powder & Granules	Fill & Other Uses
1999	28,265	18,733	51,872	33,569	13,740	52,648	10,049	6,829	3,135	190,581
2000	28,815	12,399	44,644	33,341	11,670	44,923	5,519	7,356	2,856	328,547
2001	30,770	14,834	47,521	33,052	13,586	47,588	3,159	8,465	2,799	383,353
2002	32,182	18,348	44,424	32,653	19,069	43,947	2,674	7,850	3,275	498,212
2003	34,471	15,623	29,003	34,700	14,576	29,240	2,477	8,849	3,416	669,818
2004	..	..	..	..	..	..	..	..	..	..
2005	..	..	..	..	..	..	2,824	10,281	5,347	..
2006 (P)	..	61,612	22,967	..	64,037	22,719	..	6,454	4,274	860,395
2007	..	65,260	19,141	..	62,646	19,431	2,563	2,521	3,746	..
2008	..	59,644	16,915	..	58,129	18,402	..	2,749	2,253	..
2009	..	33,759	9,150	22,555	34,322	10,637	2,420	2,186	766	615,346
2010	..	32,898	..	..	32,739	..	..	2,358	..	586,123
2002 Q4	8,702	4,340	11,291	9,098	4,303	10,530	2,674	7,850	3,275	132,822
2003 Q1	8,436	3,492	8,077	7,545	3,108	7,887	3,570	8,188	3,417	177,974
Q2	8,635	4,364	7,335	9,028	4,132	7,230	3,177	8,420	3,523	172,954
Q3	8,195	4,120	6,685	8,679	4,196	7,333	2,693	8,344	2,875	151,403
Q4	9,205	3,647	6,906	9,448	3,140	6,790	2,477	8,849	3,416	167,487
2004 Q1	9,397	4,432	7,288	8,379	4,619	7,460	3,469	8,777	3,242	158,552
Q2	9,031	3,596	8,083	10,135	3,499	7,328	2,365	8,874	3,997	154,407
Q3	..	8,029	7,544	..	8,578	7,049	3,954	8,225	4,592	158,333
Q4	..	..	..	..	..	..	..	..	..	..
2005 Q1	..	..	..	..	..	..	..	..	..	..
Q2	..	..	..	..	..	..	..	..	..	..
Q3	..	..	..	..	..	..	..	..	..	..
Q4	..	13,635	7,448	..	6,194	7,635	2,824	10,281	5,347	124,188
2006 Q1	..	11,594	6,575	..	12,879	6,406	3,170	8,967	5,440	195,762
Q2	..	14,804	5,051	..	14,983	5,257	3,079	7,424	3,990	223,696
Q3	..	16,170	5,194	..	16,803	5,094	..	6,792	4,090	251,314
Q4 (P)	..	19,044	6,147	..	19,372	5,962	..	6,454	4,274	189,623
2007 Q1	..	17,787	5,571	..	16,829	5,036	6,984	4,996	4,571	376,876
Q2	..	16,577	4,315	..	14,765	4,875	3,066	5,850	4,011	346,426
Q3	..	16,017	4,672	..	15,475	4,929	2,977	6,391	3,754	..
Q4	..	14,879	4,583	..	15,577	4,591	2,563	2,521	3,746	255,249
2008 Q1	..	18,608	4,282	..	18,071	4,414	..	3,059	3,594	246,495
Q2	..	15,465	4,738	..	14,457	4,862	..	3,801	3,484	..
Q3	..	13,811	3,843	..	13,841	5,511	3,851	2,749	1,816	..
Q4	..	11,760	4,052	..	11,760	3,615	..	2,749	2,253	..
2009 Q1	..	7,370	2,128	5,315	7,688	2,724	..	2,431	1,658	148,722
Q2	5,084	9,124	2,046	5,328	9,319	3,385	4,142	2,236	318	169,661
Q3	5,503	8,263	2,046	6,534	8,267	2,163	3,111	2,232	201	154,862
Q4	4,687	9,002	2,930	5,378	9,048	2,365	2,420	2,186	766	142,101
2010 Q1	..	6,772	..	..	6,662	..	..	2,296	..	88,805
Q2	..	6,744	..	..	6,701	..	1,811	2,339	1,683	178,477
Q3	..	13,117	..	..	13,090	..	1,059	2,365	1,281	156,976
Q4	4,889	6,265	..	4,904	6,286	..	..	2,358	..	161,865

Note : From Q1 1995, the coverage of 'powder & granules' has been extended to include non-quarry manufacture; and 'crude blocks' are included in 'other' manufacture slate.

- (a) Refers to stocks at the end of the period.
- (b) Consists of all slate tiles which could be used as roofing tiles.
- (c) Consists of all slate products for cladding and decorative uses

# Deliveries of Sand & Gravel and RMC

4-quarter moving average



The data is taken from Tables 4 & 13

**Table 8 : Cement & Clinker - Production, Deliveries and Stocks**

Great Britain

Thousand tonnes

		Cement					Cementitious Material		Clinker
		Production	Exports	Deliveries	Imports (into GB)		other	total	Production
		of which	(from GB)	(into GB from GB production)	by 'Manuf.	by Others**			
2004		11,405	141	11,074	609	825	2,443	14,951	10,402
2005		11,216	110	11,004	306	971	2,385	14,666	10,074
2006		11,469	127	11,221	124	1,089	2,648	15,082	10,069
2007		11,887	74	11,638	255	1,121	2,769	15,783	10,227
2008		10,071	61	9,937	283	1,084	2,432	13,660	8,700
2009		7,623	21	7,474	99	1,085	1,680	10,338	6,421
2004	Q4	2,788	34	2,653	110	190	576	3,529	2,697
2005	Q1	2,544	21	2,555	104	225	547	3,431	2,193
	Q2	3,024	30	2,986	70	264	632	3,952	2,669
	Q3	2,940	29	2,923	77	264	666	3,930	2,576
	Q4	2,708	30	2,540	55	218	540	3,353	2,636
2006	Q1	2,647	25	2,737	28	269	601	3,635	2,127
	Q2	2,981	30	2,895	32	268	692	3,887	2,622
	Q3	2,990	37	2,917	40	303	732	3,992	2,654
	Q4	2,851	35	2,672	24	249	623	3,568	2,666
2007	Q1	2,678	27	2,779	43	271	643	3,735	2,021
	Q2	3,188	22	3,061	59	297	701	4,117	2,812
	Q3	3,130	9	3,011	84	294	746	4,135	2,751
	Q4	2,891	16	2,787	69	259	681	3,796	2,643
2008	Q1	2,609	18	2,551	88	268	598	3,505	2,267
	Q2	2,803	18	2,816	94	327	682	3,917	2,366
	Q3	2,520	13	2,496	72	263	648	3,445	2,202
	Q4	2,139	12	2,074	29	226	505	2,793	1,865
2009	Q1	1,762	14	1,782	37	256	410	2,485	1,378
	Q2	2,004	1	1,970	21	279	451	2,721	1,587
	Q3	1,998	5	1,999	25	283	453	2,760	1,831
	Q4	1,859	1	1,723	17	268	366	2,373	1,624
2010	Q1	1,726	0	1,744	24	246	336	2,350	1,261
	Q2	2,157	0	2,154	8	345	416	2,923	1,745
	Q3	2,203	0	2,195	17	310	450	2,971	1,880
2009	Nov	667	1	605	4	..	..	..	596
	Dec	433	0	422	4	..	..	..	409
2010	Jan	400	0	397	8	..	..	..	227
	Feb	601	0	595	8	..	..	..	430
	Mar	725	0	752	8	..	..	..	604
	Apr	675	0	684	0	..	..	..	532
	May	732	0	703	4	..	..	..	567
	Jun	750	0	767	4	..	..	..	645
	Jul	804	0	766	9	..	..	..	619
	Aug	688	0	688	4	..	..	..	642
	Sep	711	0	741	4	..	..	..	619
	Oct	741	0	702	4	..	..	..	600
	Nov	687	0	662	4	..	..	..	591

**NB** Where the coverage is for Great Britain, the figures for imports & exports are defined accordingly and have been estimated.

Cementitious material covers cement itself, pulverised fuel ash (pfa) to BS 3892 Part 1 and ground granulated blast-furnace slag (ggbs) to BS 6699

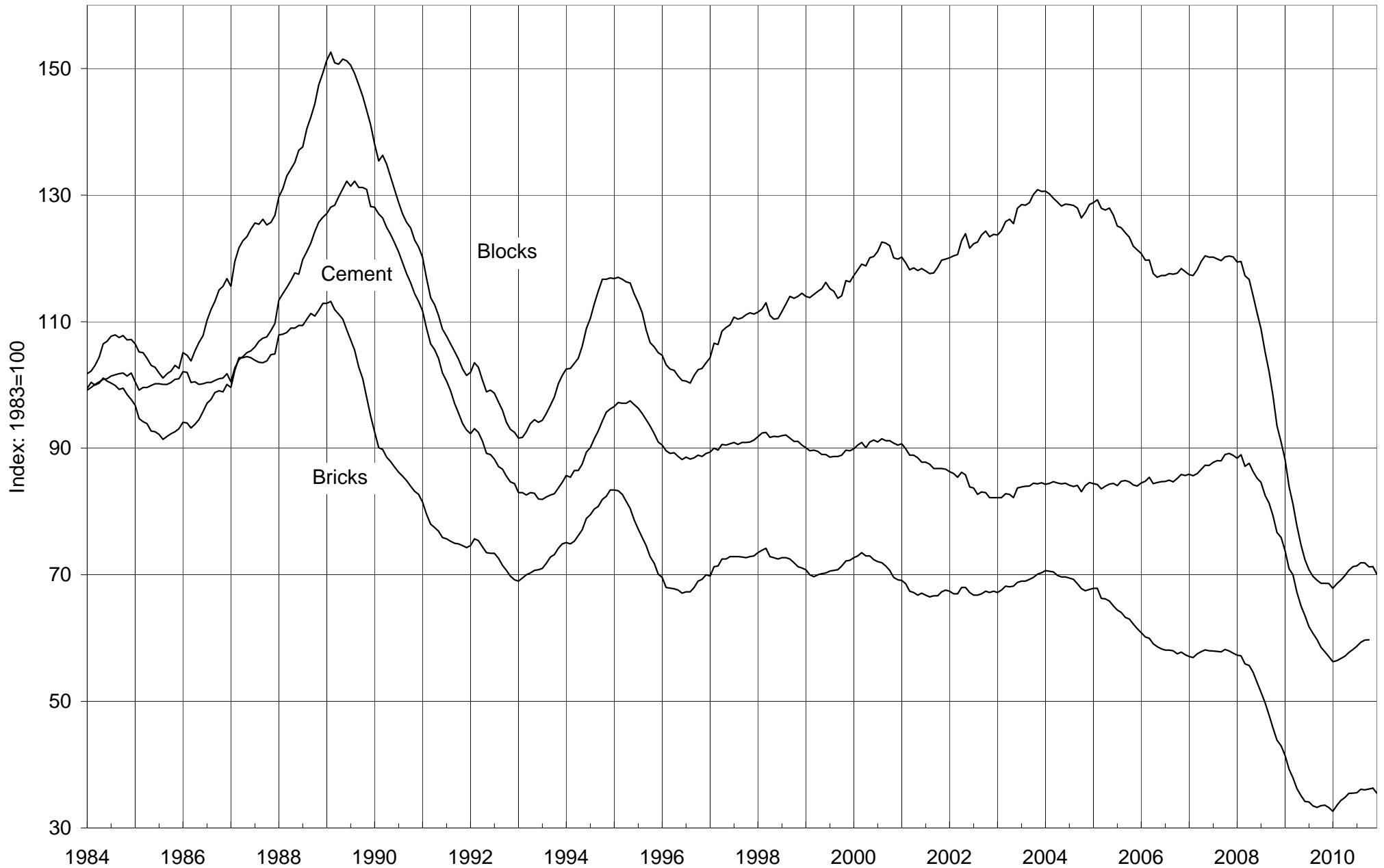
\* Refers to stocks at end of period

\*\* Estimated



# Deliveries of Bricks, Blocks & Cement

12-month moving totals



The data is taken from tables 8, 9 and 11

**Table 9 : Bricks - Production, Deliveries and Stocks**

Great Britain

		<b>Production</b>	<b>Deliveries</b> (from)	<b>Stocks*</b>	<b>Production</b>	<b>Deliveries</b> (from)	<b>Stocks*</b>
<b>(a) Brick Type</b>		<u>All Types</u>			<u>Commons</u>		
2006		2,510	2,399	906	304	284	137
2007		2,471	2,409	965	305	291	150
2008		1,929	1,796	1,105	246	242	151
2009		1,216	1,388	921	187	200	134
2010		1,351	1,484	778	177	170	139
2009	Q4	231	331	921	36	45	134
2010	Q1	284	337	865	43	40	134
	Q2	376	431	807	46	51	128
	Q3	355	406	751	45	44	131
	Q4	336	309	778	43	35	139
2010	January	62	58	923	11	8	135
	February	96	120	899	14	15	134
	March	126	159	865	17	17	134
	April	126	141	847	16	18	131
	May	136	152	831	17	19	129
	June	114	139	807	13	14	128
	July	120	144	781	17	16	130
	August	107	129	755	14	13	131
	September	128	133	751	14	15	131
	October	144	143	753	17	16	131
	November	118	117	754	15	12	134
	December	73	49	778	12	7	139
2011	January (P)	83	92	773	9	8	140
<b>(b) Material Type</b>		<u>All Materials</u>			<u>Clay#</u>		
2006		2,510	2,399	906	2,359	2,254	887
2007		2,471	2,409	965	2,312	2,249	947
2008		1,929	1,796	1,105	1,814	1,676	1,093
2009		1,216	1,388	921	..	..	..
2010		1,351	1,484	778	..	..	..
2009	Q4	231	331	921	..	..	..
2010	Q1	284	337	865	..	..	..
	Q2	376	431	807	..	..	..
	Q3	355	406	751	..	..	..
	Q4	336	309	778	..	..	..
2010	January	62	58	923	..	..	..
	February	96	120	899	..	..	..
	March	126	159	865	..	..	..
	April	126	141	847	..	..	..
	May	136	152	831	..	..	..
	June	114	139	807	..	..	..
	July	120	144	781	..	..	..
	August	107	129	755	..	..	..
	September	128	133	751	..	..	..
	October	144	143	753	..	..	..
	November	118	117	754	..	..	..
	December	73	49	778	..	..	..
2011	January (P)	83	92	773	..	..	..

\* Refers to stocks at end of period

#Sand-lime bricks are included with clay bricks

Millions

<b>Production</b>	<b>Deliveries (from)</b>	<b>Stocks*</b>	<b>Production</b>	<b>Deliveries (from)</b>	<b>Stocks*</b>	
						<b>(a) Brick Type</b>
Facings			Engineerings			
2,013	1,923	710	193	192	58	2006
1,950	1,906	753	216	212	62	2007
1,514	1,386	895	170	168	58	2008
927	1,079	735	103	109	52	2009
1,047	1,181	594	126	133	46	2010
176	264	735	19	22	52	2009 Q4
217	270	681	24	26	50	2010 Q1
297	343	633	33	38	45	Q2
278	326	579	32	37	41	Q3
255	241	594	37	32	46	Q4
46	47	735	4	3	53	2010 January
74	97	712	8	8	53	February
96	127	681	12	15	50	March
99	110	668	11	12	48	April
106	119	655	13	14	48	May
92	113	633	9	12	45	June
94	119	606	9	10	45	July
83	103	582	10	12	43	August
101	104	579	13	15	41	September
114	112	581	14	14	40	October
91	93	579	13	12	41	November
51	36	594	10	6	46	December
62	74	586	11	10	47	2011 January (P)
						<b>(b) Material Type</b>
Sand-Lime#			Concrete			
..	..	..	150	146	19	2006
..	..	..	159	160	18	2007
..	..	..	115	120	11	2008
..	..	..	..	..	..	2009
..	..	..	..	..	..	2010
..	..	..	..	..	..	2009 Q4
..	..	..	..	..	..	2010 Q1
..	..	..	..	..	..	Q2
..	..	..	..	..	..	Q3
..	..	..	..	..	..	Q4
..	..	..	..	..	..	2010 January
..	..	..	..	..	..	February
..	..	..	..	..	..	March
..	..	..	..	..	..	April
..	..	..	..	..	..	May
..	..	..	..	..	..	June
..	..	..	..	..	..	July
..	..	..	..	..	..	August
..	..	..	..	..	..	September
..	..	..	..	..	..	October
..	..	..	..	..	..	November
..	..	..	..	..	..	December
..	..	..	..	..	..	2011 January (P)

**Table 10 : Brick Production, Deliveries and Stocks by English region, Wales and Scotland**

	North East	Yorks & Humber	North West	West Midlands	East Midlands	East of England
				#		#
<b>(a) Commons</b>						
Production						
2010	..	..	9,499	..	45,682	..
2010 Q1	..	780	2,025	..	10,300	..
Q2	..	..	2,822	..	11,346	..
Q3	..	865	2,277	..	10,871	..
Q4	..	961	2,375	..	13,165	..
2010 December	..	190	647	1,092	3,102	..
Deliveries (from)						
2010	..	4,301	9,071	..	41,394	..
2010 Q1	..	990	1,922	1,769	8,426	..
Q2	..	1,612	2,686	..	11,820	..
Q3	..	904	2,695	..	11,078	..
Q4	..	795	1,768	..	10,070	..
2010 December	..	68	265	..	1,876	..
Stocks *						
2010	2,917	3,086	5,342	7,815	13,670	..
2010 Q1	1,385	3,565	5,017	4,229	11,393	..
Q2	1,656	2,959	5,153	4,021	9,572	..
Q3	2,435	2,920	4,735	5,934	10,575	..
Q4	2,917	3,086	5,342	7,815	13,670	..
2010 December	2,917	3,086	5,342	7,815	13,670	..
<b>(b) Facings</b>						
Production						
2010	..	61,277	..	288,995	240,113	..
2010 Q1	..	12,432	..	56,743	48,562	..
Q2	..	15,610	15,927	81,083	61,253	..
Q3	..	17,000	15,242	81,073	65,405	..
Q4	..	16,235	13,873	70,096	64,893	..
2010 December	..	3,872	2,877	12,818	13,503	..
Deliveries (from)						
2010	..	76,725	91,127	323,362	..	..
2010 Q1	..	17,757	20,675	76,337	..	..
Q2	..	22,445	27,179	93,260	69,438	..
Q3	..	21,820	24,831	89,225	67,269	..
Q4	..	14,703	18,442	64,540	53,014	..
2010 December	..	1,378	3,107	10,303	6,702	..
Stocks *						
2010	35,831	27,311	60,145	108,408	..	..
2010 Q1	45,577	37,434	85,555	127,076	..	..
Q2	..	30,599	74,303	114,899	..	..
Q3	38,227	25,779	64,714	103,080	121,389	..
Q4	35,831	27,311	60,145	108,408	..	..
2010 December	35,831	27,311	60,145	108,408	..	..
<b>(c) Engineering #</b>						
Production						
2010	..	..	..	84,198	0	..
2010 Q1	..	..	..	16,442	0	..
Q2	..	..	..	23,437	0	..
Q3	..	..	..	21,843	0	..
Q4	..	..	..	22,476	0	..
2010 December	..	..	2,248	5,301	0	..
Deliveries (from)						
2010	..	..	..	84,889	..	..
2010 Q1	..	..	..	16,208	..	..
Q2	..	..	..	24,585	..	..
Q3	..	..	..	22,975	..	..
Q4	..	..	..	21,121	..	..
2010 December	..	704	471	4,314	..	..
Stocks *						
2010	..	..	3,674	10,898	..	..
2010 Q1	..	..	..	11,875	..	..
Q2	..	..	..	10,727	..	..
Q3	..	..	2,240	9,595	..	..
Q4	..	..	3,674	10,898	..	..
2010 December	..	..	3,674	10,898	..	..

Note : Regions now use Government Office boundaries

\* Refers to stocks at end of period.

Thousands

South East	South West	England	Wales	Scotland	Great Britain	
#	#					
..	..	..	..	..	177,957	<b>(a) Commons</b>
..	..	..	..	..	42,770	Production
..	..	..	..	..	47,222	2010
..	..	..	..	..	44,565	2010 Q1
..	..	..	..	..	43,400	Q2
..	481	..	..	..	12,069	Q3
..	..	..	..	..	..	Q4
..	..	..	..	..	..	2010 December
..	..	..	..	..	170,894	Deliveries (from)
..	..	..	..	..	40,425	2010
..	..	..	..	..	51,409	2010 Q1
..	..	..	..	..	43,642	Q2
..	..	..	..	..	35,418	Q3
..	..	..	..	..	6,947	Q4
..	..	..	..	..	..	2010 December
..	..	..	2,297	..	138,746	Stocks *
..	1,914	..	..	..	133,960	2010
..	1,756	..	..	..	128,631	2010 Q1
..	1,735	..	2,058	..	130,764	Q2
..	..	..	2,297	..	138,746	Q3
..	..	..	2,297	..	138,746	Q4
..	..	..	2,297	..	138,746	2010 December
..	..	..	..	..	1,046,108	<b>(b) Facings</b>
..	..	..	..	..	216,933	Production
59,598	..	..	..	..	295,932	2010
52,650	..	..	..	..	277,870	2010 Q1
43,157	..	..	..	..	255,373	Q2
5,858	..	..	..	..	50,754	Q3
..	..	..	..	..	..	Q4
..	..	..	..	..	..	2010 December
221,673	..	..	..	..	1,181,101	Deliveries (from)
49,194	..	..	..	..	270,493	2010
63,645	..	..	..	..	343,478	2010 Q1
64,262	..	..	..	..	326,116	Q2
44,572	..	..	..	..	241,014	Q3
7,507	..	..	..	..	36,188	Q4
..	..	..	..	..	..	2010 December
..	21,802	..	..	4,818	593,575	Stocks *
93,325	24,136	..	..	2,838	680,879	2010
89,258	22,388	..	..	3,352	631,541	2010 Q1
..	20,300	..	..	3,564	579,444	Q2
..	21,802	..	..	4,818	593,575	Q3
..	21,802	..	..	4,818	593,575	Q4
..	..	..	..	..	..	2010 December
..	..	..	..	..	126,458	<b>(c) Engineering #</b>
..	..	..	..	0	23,952	Production
..	..	..	..	..	33,238	2010
..	..	..	0	..	32,265	2010 Q1
..	..	..	..	..	37,003	Q2
..	..	..	0	..	10,001	Q3
..	..	..	..	..	..	Q4
..	..	..	..	..	..	2010 December
..	..	..	..	..	132,883	Deliveries (from)
..	..	..	..	..	26,369	2010
..	..	..	..	..	37,620	2010 Q1
..	..	..	..	..	36,644	Q2
..	..	..	..	..	32,250	Q3
..	..	..	..	..	5,687	Q4
..	..	..	..	..	..	2010 December
..	..	..	..	..	45,681	Stocks *
..	..	..	..	..	49,740	2010
..	..	..	..	..	45,359	2010 Q1
..	..	..	..	..	40,980	Q2
..	..	..	..	..	45,681	Q3
..	..	..	..	..	45,681	Q4
..	..	..	..	..	45,681	2010 December

# Engineering bricks : South West are included with West Midlands and East of England are included with South East.

Table 10 (cont'd) : Brick Production, Deliveries and Stocks by English region, Wales and Scotland

	North East	Yorks & Humber	North West	West Midlands	East Midlands	East of England
<b>(d) All Bricks</b>						
Production						
2009	..	..	..	..	..	..
2010	..	..	..	..	285,795	..
2009 Q4	..	..	..	..	..	..
2010 Q1	..	..	..	..	58,862	..
Q2	..	..	..	..	72,599	..
Q3	..	..	..	..	76,276	..
Q4	..	..	..	..	78,058	..
2009 December	..	..	..	..	..	..
2010 January	..	..	..	12,235	13,284	..
February	..	..	..	25,782	21,581	..
March	..	..	..	..	23,997	..
April	..	..	..	37,037	23,763	..
May	..	..	..	38,411	26,008	..
June	..	..	..	..	22,828	..
July	..	..	..	..	24,195	..
August	..	..	..	..	24,313	..
September	..	..	..	..	27,768	..
October	..	..	..	42,149	34,206	..
November	..	7,982	..	..	27,247	..
December	..	..	5,772	19,154	16,605	..
Deliveries (from)						
2009	..	..	..	..	..	..
2010	..	..	..	..	..	..
2009 Q4	..	..	..	..	..	..
2010 Q1	..	..	..	93,972	..	..
Q2	..	..	..	..	..	..
Q3	..	..	..	..	..	..
Q4	..	..	..	..	..	..
2009 December	..	..	..	..	..	..
2010 January	..	..	..	15,413	..	..
February	..	..	..	33,797	..	..
March	..	..	..	44,762	..	..
April	..	..	..	..	..	..
May	..	..	..	39,258	..	..
June	..	..	..	42,626	..	..
July	..	..	..	38,446	..	..
August	..	..	..	36,852	..	..
September	..	..	..	..	..	..
October	..	..	..	38,303	..	..
November	..	7,899	..	34,493	..	..
December	..	2,150	3,843	..	..	..
Stocks *						
2009	..	..	..	161,762	..	..
2010	..	..	69,161	126,855	..	..
2009 Q4	..	..	..	161,762	..	..
2010 Q1	..	..	..	143,038	..	..
Q2	..	..	..	129,421	..	..
Q3	..	..	71,689	118,123	..	..
Q4	..	..	69,161	126,855	..	..
2009 December	..	..	..	161,762	..	..
2010 January	..	..	..	158,584	..	..
February	..	..	..	150,569	..	..
March	..	..	..	143,038	..	..
April	..	..	..	141,850	..	..
May	..	..	..	141,003	..	..
June	..	..	..	129,421	..	..
July	..	..	..	124,971	..	..
August	..	..	..	119,973	..	..
September	..	..	71,689	118,123	..	..
October	..	..	..	121,917	..	..
November	..	..	..	122,789	..	..
December	..	..	69,161	126,855	..	..

Note : Regions now use Government Office boundaries

\* Refers to stocks at end of period.

South East	South West	England	Wales	Scotland	Great Britain	
						<b>(d) All Bricks</b>
						Production
..	..	..	..	..	1,216,471	2009
..	..	..	..	..	1,350,523	2010
..	..	..	..	..	231,397	2009 Q4
..	..	..	..	..	283,655	2010 Q1
..	..	..	..	..	376,392	Q2
..	..	..	..	..	354,700	Q3
..	..	..	..	..	335,776	Q4
..	..	..	..	..	40,403	2009 December
..	..	..	..	..	61,584	2010 January
..	..	..	..	..	96,210	February
..	..	..	..	..	125,861	March
..	..	..	..	..	126,417	April
..	..	..	..	..	136,022	May
..	..	..	..	..	113,953	June
..	..	..	..	..	119,600	July
..	..	..	..	..	106,618	August
..	..	..	..	..	128,482	September
..	..	..	..	..	144,482	October
..	..	..	..	..	118,470	November
..	..	..	..	..	72,824	December
						Deliveries (from)
..	..	..	..	..	1,388,003	2009
..	..	..	..	..	1,484,878	2010
..	..	..	..	..	331,347	2009 Q4
..	..	..	..	..	337,287	2010 Q1
..	..	..	..	..	432,507	Q2
..	..	..	..	..	406,402	Q3
..	..	..	..	..	308,682	Q4
..	..	..	..	..	82,926	2009 December
..	..	..	..	..	57,792	2010 January
..	..	..	..	..	120,214	February
..	..	..	..	..	159,281	March
..	..	..	..	..	140,693	April
..	..	..	..	..	152,089	May
..	..	..	..	..	139,725	June
..	..	..	..	..	144,261	July
..	..	..	..	..	128,711	August
..	..	..	..	..	133,430	September
..	..	..	..	..	142,549	October
..	..	..	..	..	117,311	November
..	..	..	..	..	48,822	December
						Stocks *
..	..	..	..	..	921,354	2009
..	..	..	..	..	778,002	2010
..	..	..	..	..	921,354	2009 Q4
..	..	..	..	..	864,579	2010 Q1
..	..	..	..	..	805,531	Q2
..	..	..	..	..	751,188	Q3
..	..	..	..	..	778,002	Q4
..	..	..	..	..	921,354	2009 December
..	..	..	..	..	922,629	2010 January
..	..	..	..	..	898,591	February
..	..	..	..	..	864,579	March
..	..	..	..	..	847,412	April
..	..	..	..	..	831,323	May
..	..	..	..	..	805,531	June
..	..	..	..	..	780,870	July
..	..	..	..	..	754,926	August
..	..	..	..	..	751,188	September
..	..	..	..	..	753,069	October
..	..	..	..	..	754,000	November
..	..	..	..	..	778,002	December

# CONCRETE PRODUCTS

## Table 11 : Concrete Blocks - Production, Deliveries and Stocks

Great Britain

	All Types			Dense		
	Production	Deliveries (from)	Stocks*	Production	Deliveries (from)	Stocks*
2000	90,219	88,529	9,594	37,629	37,013	4,368
2001	87,922	88,509	8,842	36,598	36,518	4,258
2002	91,474	91,342	9,014	35,744	36,019	3,963
2003	95,675	96,383	8,513	36,775	37,175	3,684
2004	96,256	94,854	10,088	37,677	37,444	3,690
2005	89,997	89,551	9,680	36,188	36,473	3,465
2006	87,510	87,015	..	34,956	34,741	..
2007	89,951	88,746	..	36,686	35,396	..
2008	67,743	67,136	8,920	29,675	29,889	3,498
2009	50,394	50,639	8,320	22,607	22,748	3,291
2010	53,629	51,758	10,152	22,393	21,731	3,833
2005 Q4	20,186	19,720	9,680	7,985	8,008	3,465
2006 Q1	21,155	20,820	..	8,536	8,160	..
Q2	22,435	22,560	..	8,903	8,903	..
Q3	22,615	23,611	..	9,384	9,599	..
Q4	21,305	20,023	..	8,133	8,079	..
2007 Q1	22,014	21,057	..	8,714	8,141	..
Q2	22,532	24,033	..	9,268	9,531	..
Q3	23,248	23,184	..	9,727	9,283	..
Q4	22,157	20,472	..	8,978	8,442	..
2008 Q1	21,131	18,855	11,749	8,564	7,853	5,075
Q2	20,231	19,714	11,977	8,767	8,677	5,107
Q3	14,894	16,309	10,224	7,131	7,576	4,479
Q4	11,487	12,259	8,920	5,214	5,783	3,498
2009 Q1	12,094	11,649	9,161	5,635	5,438	3,628
Q2	13,463	13,191	9,455	6,192	6,032	3,821
Q3	12,771	13,924	8,203	5,811	6,255	3,390
Q4	12,066	11,874	8,320	4,969	5,023	3,291
2010 Q1	12,614	12,072	8,740	5,033	4,896	3,333
Q2	14,956	14,753	8,990	6,343	6,176	3,513
Q3	15,172	14,343	9,832	6,477	6,125	3,837
Q4	10,887	10,590	10,152	4,541	4,534	3,833
2009 January	3,750	3,561	..	1,835	1,637	..
February	3,802	3,540	..	1,745	1,687	..
March	4,543	4,548	9,161	2,055	2,114	3,628
April	4,580	4,447	..	2,077	2,028	..
May	4,158	4,144	..	1,911	1,884	..
June	4,725	4,600	9,455	2,203	2,119	3,821
July	4,740	4,863	..	2,111	2,172	..
August	3,417	4,264	..	1,642	1,933	..
September	4,614	4,797	8,203	2,058	2,151	3,390
October	4,740	4,818	..	1,930	2,006	..
November	4,372	4,072	..	1,782	1,720	..
December	2,954	2,984	8,320	1,258	1,297	3,291
2010 January	3,342	3,003	..	1,225	1,186	..
February	4,341	4,100	..	1,744	1,672	..
March	4,931	4,969	8,740	2,063	2,039	3,333
April	4,814	4,948	..	1,975	1,970	..
May	4,790	4,765	..	1,974	1,969	..
June	5,353	5,040	8,990	2,394	2,237	3,513
July	5,266	4,970	..	2,248	2,169	..
August	4,711	4,614	..	2,158	1,962	..
September	5,195	4,759	9,832	2,070	1,993	3,837
October	4,295	4,372	..	1,739	1,824	..
November	3,999	4,092	..	1,595	1,710	..
December	2,593	2,126	10,152	1,207	1,001	3,833
2011 January (P)	3,871	3,572	..	1,609	1,529	..

\* Refers to stocks at end of period



# CONCRETE PRODUCTS

Thousand square metres

Lightweight			Aerated			
Production	Deliveries (from)	Stocks*	Production	Deliveries (from)	Stocks*	
22,991	22,638	2,169	29,599	28,878	3,058	2000
22,684	22,670	2,207	28,639	29,320	2,377	2001
23,478	23,537	2,188	32,252	31,786	2,863	2002
24,991	25,161	2,107	33,909	34,047	2,721	2003
25,462	25,736	2,271	33,117	31,674	4,127	2004
25,561	25,673	2,173	28,248	27,405	4,042	2005
25,345	25,222	..	27,209	27,051	..	2006
25,965	25,667	..	27,300	27,682	..	2007
18,168	18,363	2,149	19,900	18,884	3,273	2008
13,421	13,989	1,522	14,367	13,903	3,507	2009
14,415	13,923	2,044	16,822	16,104	4,276	2010
5,859	5,693	2,173	6,342	6,019	4,042	2005 Q4
6,262	6,179	..	6,357	6,481	..	2006 Q1
6,125	6,342	..	7,406	7,315	..	Q2
6,699	6,781	..	6,532	7,231	..	Q3
6,258	5,920	..	6,914	6,024	..	Q4
6,418	6,437	..	6,883	6,479	..	2007 Q1
6,572	6,867	..	6,692	7,636	..	Q2
6,757	6,616	..	6,764	7,286	..	Q3
6,217	5,748	..	6,962	6,282	..	Q4
5,580	5,389	2,633	6,988	5,612	4,041	2008 Q1
5,421	5,405	2,549	6,043	5,632	4,321	Q2
4,110	4,309	2,338	3,653	4,424	3,406	Q3
3,057	3,260	2,149	3,216	3,216	3,273	Q4
3,213	3,258	2,181	3,247	2,953	3,352	2009 Q1
3,498	3,553	2,125	3,773	3,607	3,510	Q2
3,293	3,765	1,544	3,667	3,903	3,269	Q3
3,416	3,412	1,522	3,681	3,439	3,507	Q4
3,344	3,252	1,601	4,238	3,924	3,806	2010 Q1
4,031	3,950	1,692	4,582	4,627	3,785	Q2
4,208	3,899	2,023	4,487	4,319	3,971	Q3
2,832	2,822	2,044	3,515	3,234	4,276	Q4
890	998	..	1,025	927	..	2009 January
954	967	..	1,103	887	..	February
1,369	1,293	2,181	1,118	1,140	3,352	March
1,186	1,198	..	1,318	1,221	..	April
1,091	1,124	..	1,155	1,136	..	May
1,221	1,231	2,125	1,301	1,250	3,510	June
1,171	1,275	..	1,458	1,416	..	July
895	1,152	..	881	1,180	..	August
1,227	1,339	1,544	1,328	1,308	3,269	September
1,379	1,411	..	1,431	1,401	..	October
1,300	1,173	..	1,290	1,178	..	November
737	828	1,522	959	859	3,507	December
712	760	..	1,406	1,057	..	2010 January
1,302	1,134	..	1,294	1,294	..	February
1,330	1,357	1,601	1,538	1,573	3,806	March
1,298	1,288	..	1,541	1,689	..	April
1,305	1,264	..	1,511	1,532	..	May
1,428	1,398	1,692	1,530	1,405	3,785	June
1,474	1,354	..	1,543	1,447	..	July
1,286	1,289	..	1,267	1,363	..	August
1,447	1,256	2,023	1,677	1,510	3,971	September
1,211	1,201	..	1,345	1,347	..	October
1,068	1,122	..	1,336	1,260	..	November
553	498	2,044	834	627	4,276	December
934	1,012	..	1,328	1,031	..	2011 January (P)

# CONCRETE PRODUCTS

**Table 12 : Concrete Blocks : Production, Deliveries and Stocks by English Region, Wales and Scotland**

	North East	Yorks & Humber	North West	West Midlands	East Midlands	East of England
<b>(a) Dense aggregate</b>						
Production						
2010	418	..	2,778	..	..	..
2009 Q4	97	..	655	..	..	..
2010 Q1	68	..	657	..	..	..
Q2	114	..	742	..	..	..
Q3	155	..	826	..	..	..
Q4	81	..	553	..	..	..
Deliveries (from)						
2010	397	..	2,799	..	..	..
2009 Q4	75	..	623	..	..	..
2010 Q1	72	..	633	..	..	..
Q2	117	..	761	..	..	..
Q3	135	..	831	..	..	..
Q4	73	..	575	..	..	..
Stocks *						
2010	85	332	265	..	..	..
2009 Q4	64	307	304	..	..	..
2010 Q1	60	399	320	..	..	..
Q2	57	363	300	..	..	..
Q3	76	372	287	..	..	..
Q4	85	332	265	..	..	..
<b>(b) Other (1)</b>						
Production						
2010	1,188	..	2,016	..	..	..
2009 Q4	269	..	337	..	..	..
2010 Q1	259	..	414	..	..	..
Q2	372	..	579	..	..	..
Q3	333	..	591	..	..	..
Q4	225	..	432	..	..	..
Deliveries (from)						
2010	1,202	..	2,060	..	..	..
2009 Q4	259	..	365	..	..	..
2010 Q1	255	..	448	..	..	..
Q2	356	..	591	..	..	..
Q3	363	..	596	..	..	..
Q4	227	..	426	..	..	..
Stocks *						
2010	120	1,099	164	..	..	..
2009 Q4	125	937	176	..	..	..
2010 Q1	137	1,042	154	..	..	..
Q2	153	954	144	..	..	..
Q3	123	1,128	158	..	..	..
Q4	120	1,099	164	..	..	..
<b>(c) Total</b>						
Production						
2010	1,607	10,353	4,794	3,534	6,301	6,048
2009 Q4	366	2,172	992	746	1,718	1,297
2010 Q1	327	2,451	1,071	852	1,637	1,531
Q2	486	2,880	1,321	940	1,720	1,721
Q3	487	3,055	1,417	1,014	1,734	1,646
Q4	306	1,968	985	728	1,210	1,150
Deliveries (from)						
2010	1,598	10,166	4,860	3,736	5,974	6,144
2009 Q4	334	2,152	988	785	1,720	1,303
2010 Q1	327	2,253	1,081	806	1,468	1,538
Q2	473	3,003	1,352	1,119	1,690	1,746
Q3	499	2,873	1,426	1,064	1,631	1,644
Q4	300	2,037	1,001	747	1,186	1,216
Stocks *						
2010	205	1,431	430	677	1,092	582
2009 Q4	189	1,244	480	880	797	627
2010 Q1	197	1,441	474	925	934	604
Q2	210	1,317	444	746	964	602
Q3	199	1,499	445	696	1,068	623
Q4	205	1,431	430	677	1,092	582

Note : Regions refer to Government Office Regions

\* Refers to stocks at end of period.

# CONCRETE PRODUCTS

Thousand square metres

South East	South West	England	Wales	Scotland	Great Britain	
						<b>(a) Dense aggregate</b>
						Production
..	5,813	..	2,918	..	22,387	2010
..	1,178	4,003	602	364	4,969	2009 Q4
408	1,213	..	621	..	5,027	2010 Q1
..	1,681	..	805	..	6,342	Q2
409	1,699	..	783	..	6,477	Q3
..	1,221	..	709	..	4,541	Q4
						Deliveries (from)
..	5,548	..	2,667	..	21,731	2010
..	1,121	3,937	626	460	5,023	2009 Q4
375	1,214	3,870	642	384	4,896	2010 Q1
..	1,564	4,886	745	545	6,176	Q2
406	1,556	4,924	711	489	6,125	Q3
..	1,215	..	568	..	4,534	Q4
						Stocks *
..	1,100	..	..	211	3,833	2010
..	942	2,487	530	274	3,291	2009 Q4
209	860	2,587	502	244	3,333	2010 Q1
..	982	2,646	557	310	3,513	Q2
..	1,105	2,887	629	321	3,837	Q3
..	1,100	..	..	211	3,833	Q4
						<b>(b) Other (1)</b>
						Production
..	992	..	567	..	31,242	2010
..	228	7,024	50	23	7,097	2009 Q4
1,858	217	..	64	..	7,587	2010 Q1
..	279	..	148	..	8,613	Q2
1,940	299	..	177	..	8,695	Q3
..	197	..	178	..	6,347	Q4
						Deliveries (from)
..	994	..	374	..	30,028	2010
..	207	6,753	51	47	6,851	2009 Q4
1,671	229	7,092	67	17	7,176	2010 Q1
..	285	8,450	103	24	8,577	Q2
1,633	276	8,083	117	20	8,219	Q3
..	204	..	87	..	6,056	Q4
						Stocks *
..	138	..	..	33	6,320	2010
..	124	4,935	55	39	5,029	2009 Q4
2,150	105	5,312	53	42	5,407	2010 Q1
..	109	5,338	98	42	5,477	Q2
..	134	5,801	158	35	5,994	Q3
..	138	..	..	33	6,320	Q4
						<b>(c) Total</b>
						Production
8,959	6,805	48,402	3,485	1,742	53,629	2010
2,330	1,406	11,027	652	387	12,066	2009 Q4
2,266	1,430	11,565	685	364	12,614	2010 Q1
2,353	1,960	13,381	953	622	14,956	Q2
2,349	1,998	13,699	960	512	15,172	Q3
1,991	1,418	9,756	887	244	10,887	Q4
						Deliveries (from)
7,864	6,543	46,884	3,040	1,834	51,759	2010
2,080	1,328	10,690	677	507	11,874	2009 Q4
2,046	1,443	10,962	709	401	12,072	2010 Q1
2,104	1,849	13,336	848	569	14,754	Q2
2,039	1,832	13,007	828	509	14,343	Q3
1,675	1,419	9,579	656	355	10,590	Q4
						Stocks *
3,235	1,238	8,890	1,019	244	10,152	2010
2,139	1,066	7,422	585	313	8,320	2009 Q4
2,359	965	7,899	555	286	8,740	2010 Q1
2,609	1,091	7,984	655	352	8,991	Q2
2,919	1,239	8,689	788	355	9,832	Q3
3,235	1,238	8,890	1,019	244	10,152	Q4

(1) Lightweight aggregate including aerated concrete blocks where appropriate.

# OTHER BUILDING MATERIALS

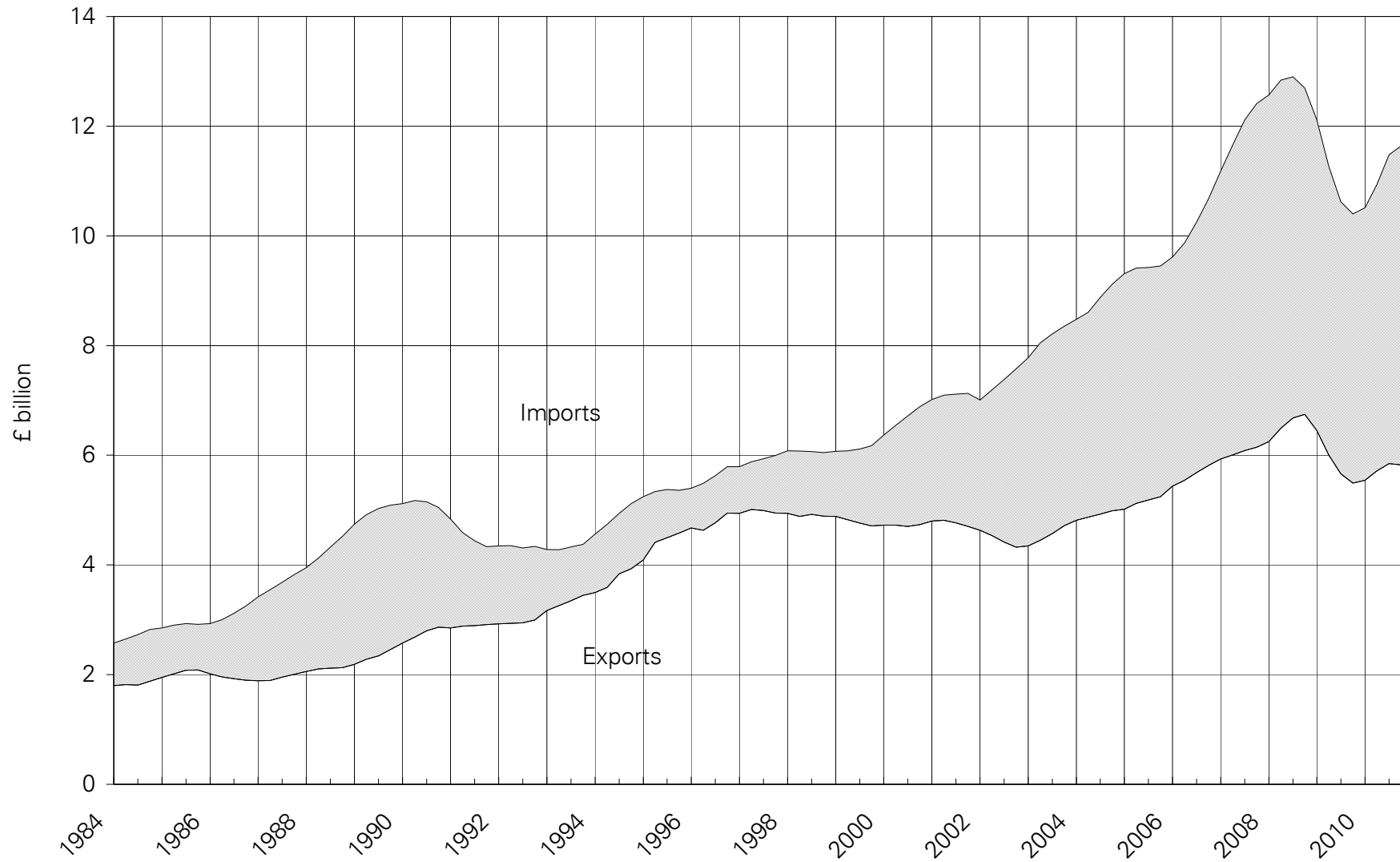
**Table 13 : Other Building Materials**

		Great Britain			United Kingdom
		<b>Concrete Roofing Tiles</b> (Th.sq.m. of roof area covered)			<b>Ready-Mixed Concrete</b> (Th.cu.m.)
		Production	Deliveries	Stocks *	Deliveries
2000		26,765	25,047	4,552	23,043
2001		24,825	24,430	4,947	23,008
2002		25,023	24,390	4,586	22,597
2003		21,437	21,401	2,982	22,289
2004		20,739	19,403	2,850	22,856
2005		25,719	24,489	4,902	22,432
2006		23,730	24,118	4,426	23,029
2007		23,551	23,812	3,646	23,548
2008		20,084	19,926	3,899	20,051
2009		14,079	15,612	2,344	14,069
2010		17,817	17,146	3,023	14,038 (R)
2001	Q4	5,725	5,803	4,947	5,647
2002	Q1	6,757	5,801	5,332	5,404
	Q2	6,097	6,474	4,954	5,934
	Q3	5,918	6,848	3,654	5,929
	Q4	6,251	5,267	4,586	5,330
2003	Q1	5,821	5,798	4,484	5,388
	Q2	6,280	6,364	4,480	5,892
	Q3	3,917	4,455	2,362	5,750
	Q4	5,418	4,785	2,982	5,259
2004	Q1	5,498	4,294	3,787	5,334
	Q2	5,266	4,800	3,728	5,931
	Q3	4,920	5,134	3,048	6,038
	Q4	5,055	5,175	2,850	5,553
2005	Q1	5,787	4,779	3,732	5,137
	Q2	7,502	6,406	5,818	5,994
	Q3	6,135	7,103	4,850	5,920
	Q4	6,295	6,200	4,902	5,381
2006	Q1	6,792	6,252	5,418	5,445
	Q2	6,002	5,709	5,708	5,995
	Q3	5,448	6,371	4,688	6,047
	Q4	5,489	5,787	4,426	5,542
2007	Q1	6,618	5,629	5,368	5,554
	Q2	5,775	5,728	5,360	6,103
	Q3	5,129	6,541	3,929	6,205
	Q4	6,028	5,914	3,646	5,686
2008	Q1	5,708	5,421	3,922	5,193
	Q2	5,815	5,679	4,488	5,773
	Q3	4,657	4,977	3,840	4,902
	Q4	3,903	3,849	3,899	4,183
2009	Q1	3,664	3,281	4,273	3,583
	Q2	3,055	3,936	3,391	3,637
	Q3	3,580	4,447	2,522	3,628
	Q4	3,779	3,949	2,344	3,221
2010	Q1	4,129	3,505	2,967	3,328
	Q2	4,961	4,922	3,008	3,819
	Q3	4,783	4,824	2,967	3,831
	Q4	3,945	3,894	3,023	3,060 (R)

\* Refers to stocks at the end of the period.

# Comparison of Imports & Exports

4-quarter moving totals



The data is taken from Table 14

## EXTERNAL TRADE

**Table 14 : Value of Overseas Trade in Selected Materials and Components for Constructional Use : Imports (cif) & Exports (fob)**

United Kingdom		Current Prices (£'000)					
		2005	2006	2007	2008	2009	2010
<b>All Building Materials &amp; Components</b>	Imports	9,453,474	10,680,836	12,415,890	12,697,046	10,399,489	11,640,774
	Exports	5,246,749	5,813,301	6,147,721	6,747,415	5,491,055	5,826,232
	Balance	(4,206,725)	(4,867,535)	(6,268,169)	(5,949,631)	(4,908,434)	(5,814,542)
<b>All Raw Materials</b>	Imports	149,138	180,137	213,589	228,019	158,706	174,076
	Exports	91,178	98,057	124,957	116,930	135,125	132,275
	Balance	(57,960)	(82,080)	(88,632)	(111,089)	(23,581)	(41,801)
Sand for construction	Imports	4,363	5,075	6,455	6,369	5,916	5,259
	Exports	5,498	5,770	7,769	9,373	7,967	7,398
Crushed Rock : uncoated	Imports	28,580	39,308	38,882	43,442	32,030	36,588
	Exports	60,850	65,985	71,990	77,930	76,898	73,819
Crushed Rock : coated	Imports	1,172	2,245	2,927	3,206	2,227	2,642
	Exports	4,787	2,621	3,937	3,862	3,061	2,988
Building Stone : unprocessed	Imports	92,059	95,903	115,064	124,436	93,174	98,961
	Exports	1,597	1,777	3,209	2,159	2,114	4,053
Slate : unprocessed	Imports	7,428	10,894	11,590	9,295	6,168	5,803
	Exports	703	309	1,579	813	1,924	844
Gypsum & Anhydrite	Imports	9,509	8,649	8,626	8,301	8,353	7,016
	Exports	547	511	493	899	768	1,148
Bituminous Shale	Imports	6,027	18,063	30,045	32,970	10,838	17,807
	Exports	17,196	21,084	35,980	21,894	42,393	42,025
<b>All Semi-Manufactures</b>	Imports	1,619,893	1,756,076	2,196,078	1,972,139	1,389,572	1,639,477
	Exports	575,831	618,573	644,415	648,822	426,190	479,419
	Balance	(1,044,062)	(1,137,503)	(1,551,663)	(1,323,317)	(963,382)	(1,160,058)
Clinker	Imports	26,338	40,922	60,554	35,973	18,520	17,331
	Exports	1,801	2,644	1,899	1,271	835	1,205
Sawn Wood > 6mm thick	Imports	691,359	727,916	915,900	610,292	554,187	701,821
	Exports	30,939	38,370	32,010	20,957	16,025	19,392
Densified Wood	Imports	2,603	2,782	2,332	1,767	1,452	2,301
	Exports	475	422	319	272	268	518
Particle Board	Imports	58,319	56,174	55,934	45,497	27,913	30,711
	Exports	11,058	16,357	9,377	8,920	8,382	8,880
Laminated Wood	Imports	232,912	250,615	282,912	296,969	215,021	146,602
	Exports	22,721	24,436	23,172	21,935	15,839	11,688
Fibreboard	Imports	58,050	61,429	72,499	61,614	56,511	53,790
	Exports	10,398	12,532	10,575	8,966	15,055	24,726
Steel for Fabrication	Imports	248,987	278,232	463,477	529,327	184,164	287,159
	Exports	270,581	236,427	257,126	301,366	185,537	216,459
Aluminium for Fabrication	Imports	211,703	272,983	277,251	315,948	268,155	328,839
	Exports	152,508	220,651	234,348	216,596	123,494	131,015
Profiles of Vinyl Chloride	Imports	48,666	48,747	41,560	44,169	44,827	35,894
	Exports	24,012	27,349	33,766	25,781	23,770	23,306
Slag for Construction	Imports	4,790	4,626	8,607	11,580	2,331	5,826
	Exports	2,788	1,747	1,231	1,018	921	1,071
Tar & Bituminous Mixtures	Imports	34,134	9,261	12,285	17,424	15,156	27,730
	Exports	37,635	26,008	27,895	27,680	22,781	27,475
Lime	Imports	2,032	2,389	2,767	1,579	1,335	1,473
	Exports	10,915	11,630	12,697	14,060	13,283	13,684

Current Prices (£'000)

2009 Q4	2010 Q1	Q2	Q3	Q4		
2,658,015	2,658,466 (R)	3,014,006 (R)	3,151,839 (R)	2,816,463	Imports	<b>All Building Materials &amp; Components</b>
1,435,673	1,361,777 (R)	1,530,828 (R)	1,520,587 (R)	1,413,040	Exports	
(1,222,342)	(1,296,689) (R)	(1,483,178) (R)	(1,631,252) (R)	(1,403,423)	Balance	
39,665	39,726	48,540 (R)	46,075 (R)	39,735	Imports	<b>All Raw Materials</b>
40,188	19,925 (R)	38,582	39,134 (R)	34,634	Exports	
523	(19,801) (R)	(9,958) (R)	(6,941) (R)	(5,101)	Balance	
1,347	949	1,413	1,609	1,288	Imports	Sand for construction
2,046	1,403	2,310	1,799 (R)	1,886	Exports	
7,779	8,531	10,044	8,518 (R)	9,495	Imports	Crushed Rock : uncoated
19,180	13,977 (R)	22,920	18,305 (R)	18,617	Exports	
662	489	610	771	772	Imports	Crushed Rock : coated
575	910	1,010	736	332	Exports	
22,302	21,892	28,469 (R)	26,582 (R)	22,018	Imports	Building Stone : unprocessed
591	639	1,283	1,163 (R)	968	Exports	
2,059	2,160	1,160	1,260	1,223	Imports	Slate : unprocessed
214	91	186	285 (R)	282	Exports	
2,432	1,604	1,745	2,059 (R)	1,608	Imports	Gypsum & Anhydrite
213	265	196	362 (R)	325	Exports	
3,084	4,101	5,099	5,276	3,331	Imports	Bituminous Shale
17,369	2,640	10,677	16,484	12,224	Exports	
364,212	343,016 (R)	464,999 (R)	441,347 (R)	390,115	Imports	<b>All Semi-Manufactures</b>
115,719	108,939 (R)	132,837 (R)	126,847 (R)	110,796	Exports	
(248,493)	(234,077) (R)	(332,162) (R)	(314,500) (R)	(279,319)	Balance	
4,468	3,961	4,019	4,783	4,568	Imports	Clinker
189	65	291	241	608	Exports	
143,353	148,700 (R)	197,372 (R)	200,200 (R)	155,549	Imports	Sawn Wood > 6mm thick
3,531	3,961	6,859 (R)	4,647 (R)	3,925	Exports	
406	545	633	664	459	Imports	Densified Wood
89	102	117	149 (R)	150	Exports	
6,932	7,378	8,235 (R)	8,281 (R)	6,817	Imports	Particle Board
1,992	3,126 (R)	1,997	1,837 (R)	1,920	Exports	
56,346	33,381 (R)	41,316 (R)	41,835 (R)	30,070	Imports	Laminated Wood
4,064	3,137	2,728 (R)	3,649 (R)	2,174	Exports	
14,557	12,352 (R)	15,073 (R)	14,143 (R)	12,222	Imports	Fibreboard
7,254	5,911 (R)	5,169	6,805 (R)	6,841	Exports	
52,620	41,048 (R)	88,894	70,292 (R)	86,925	Imports	Steel for Fabrication
50,090	48,582 (R)	61,982 (R)	57,240 (R)	48,655	Exports	
69,096	79,438 (R)	85,973 (R)	83,751 (R)	79,677	Imports	Aluminium for Fabrication
31,566	30,821	34,268 (R)	34,212 (R)	31,714	Exports	
11,806	8,272	10,220 (R)	9,412 (R)	7,990	Imports	Profiles of Vinyl Chloride
6,603	5,627	6,289	6,105 (R)	5,285	Exports	
91	293	3,732	862	939	Imports	Slag for Construction
281	232	314	294	231	Exports	
4,174	7,344	8,917	6,825 (R)	4,644	Imports	Tar & Bituminous Mixtures
5,629	4,187	8,919	8,227 (R)	6,142	Exports	
363	304	615	299 (R)	255	Imports	Lime
4,431	3,188	3,904	3,441	3,151	Exports	

## EXTERNAL TRADE

**Table 14 : Value of Overseas Trade in Selected Materials and Components for Constructional Use : Imports (cif) & Exports (fob)**

United Kingdom		Current Prices (£'000)					
		2005	2006	2007	2008	2009	2010
<b>All Products &amp; Components</b>	Imports	7,684,443	8,744,623	10,006,223	10,496,888	8,851,211	9,827,221
	Exports	4,579,740	5,096,671	5,378,349	5,981,663	4,929,740	5,214,538
	Balance	(3,104,703)	(3,647,952)	(4,627,874)	(4,515,225)	(3,921,471)	(4,612,683)
Wood sleepers (rail & tram)	Imports	7,296	6,844	7,907	10,736	5,761	5,065
	Exports	905	605	905	1,074	688	717
Building Stone : processed	Imports	173,780	206,066	243,019	252,176	211,999	216,933
	Exports	39,290	36,148	34,465	38,557	37,466	30,934
Slate Roofing Tiles	Imports	53,197	50,718	58,165	65,872	57,067	62,373
	Exports	11,093	5,479	6,941	6,559	8,552	6,286
Other Slate Products	Imports	10,235	10,641	8,963	8,204	8,002	8,381
	Exports	2,569	2,406	2,348	1,643	1,141	1,725
Portland Cement	Imports	56,472	52,408	59,422	65,930	54,475	52,246
	Exports	21,706	28,179	26,525	13,271	4,897	4,178
Other Cements	Imports	22,408	24,858	24,705	31,452	47,618	49,514
	Exports	23,786	32,357	31,336	29,824	24,202	35,372
Steel Sheet Piling	Imports	47,933	55,911	71,747	78,763	48,577	61,509
	Exports	14,808	18,609	20,205	32,009	24,175	16,226
Ready-Mixed Concrete	Imports	3	612	686	826	711	822
	Exports	9,072	10,116	10,378	12,639	4,600	3,378
Concrete Reinforcing Bars	Imports	121,965	150,492	181,795	210,556	72,138	85,023
	Exports	38,095	38,587	107,236	194,136	68,087	60,252
Mortars	Imports	4,740	5,247	6,225	7,021	7,949	7,331
	Exports	5,566	5,998	5,772	6,410	5,360	3,757
Clay Bricks	Imports	27,578	29,102	35,245	25,877	18,675	19,778
	Exports	12,082	13,540	10,591	7,133	3,703	3,162
Clay Roofing Tiles	Imports	9,485	10,285	10,348	10,104	7,576	9,116
	Exports	1,449	1,680	303	276	511	589
Clay Pipes	Imports	2,163	600	669	313	146	225
	Exports	8,445	6,262	5,518	5,775	4,177	3,472
Other Clay Products	Imports	5,240	5,885	5,602	6,668	5,453	5,224
	Exports	14,338	11,123	17,502	18,852	2,851	3,188
Concrete Blocks & Bricks	Imports	5,867	4,544	11,475	8,615	4,421	4,361
	Exports	25,598	26,813	27,318	21,102	11,844	9,203
Concrete Roofing Tiles	Imports	2,408	4,845	4,664	7,195	7,342	5,017
	Exports	7,286	7,857	7,013	3,844	2,402	2,949
Other Concrete Tiles & Paving	Imports	11,752	14,703	16,130	18,353	15,576	13,292
	Exports	35,168	33,692	38,280	34,756	19,151	13,608
Prefabricated Concrete Products	Imports	20,288	22,439	26,763	34,841	23,582	28,694
	Exports	29,373	28,936	23,240	19,042	8,967	12,258
Concrete Pipes	Imports	21,365	27,303	32,767	36,740	40,646	45,362
	Exports	25,566	27,010	32,536	31,413	30,366	24,331



Current Prices (£'000)

2009 Q4	2010 Q1	Q2	Q3	Q4		
2,254,138	2,275,724 (R)	2,500,467 (R)	2,664,417 (R)	2,386,613	Imports	<b>All Products &amp; Components</b>
1,279,766	1,232,913 (R)	1,359,409 (R)	1,354,606 (R)	1,267,610	Exports	
(974,372)	(1,042,811) (R)	(1,141,058) (R)	(1,309,811) (R)	(1,119,003)	Balance	
1,328	1,577	1,430	1,208	850	Imports	Wood sleepers (rail & tram)
85	148	246	215	108	Exports	
56,873	51,974 (R)	57,503 (R)	56,241 (R)	51,215	Imports	Building Stone : processed
7,368	7,243	9,708	7,661 (R)	6,322	Exports	
15,419	13,092	14,476	18,631 (R)	16,174	Imports	Slate Roofing Tiles
1,943	1,269	1,721	1,530	1,766	Exports	
2,546	2,234 (R)	2,231 (R)	2,049 (R)	1,867	Imports	Other Slate Products
148	390	295	347	693	Exports	
11,984	9,988 (R)	16,970	15,891	9,397	Imports	Portland Cement
1,407	950	1,033	1,133	1,062	Exports	
11,939	8,984	12,501	13,671 (R)	14,358	Imports	Other Cements
6,491	8,031	9,906	9,839	7,596	Exports	
10,125	10,417 (R)	15,331	19,792 (R)	15,969	Imports	Steel Sheet Piling
6,133	6,128 (R)	4,083 (R)	2,607 (R)	3,408	Exports	
263	255	280	203	84	Imports	Ready-Mixed Concrete
1,033	677	916	922	863	Exports	
12,747	14,578	33,371 (R)	24,021 (R)	13,053	Imports	Concrete Reinforcing Bars
9,743	18,011	12,829	17,332 (R)	12,080	Exports	
1,865	1,753	2,309	1,902 (R)	1,367	Imports	Mortars
1,119	1,189	917	981	670	Exports	
3,963	4,777	6,146	4,928	3,927	Imports	Clay Bricks
667	823	932	887	520	Exports	
1,843	1,737	2,483	2,567	2,329	Imports	Clay Roofing Tiles
85	167	291	33	98	Exports	
30	54	94	65	12	Imports	Clay Pipes
1,311	645	930	1,021	876	Exports	
1,460	1,112	1,400	1,492	1,220	Imports	Other Clay Products
669	1,148	678	594	768	Exports	
1,030	1,007	1,244	1,146 (R)	964	Imports	Concrete Blocks & Bricks
1,866	1,897	3,020	2,775 (R)	1,511	Exports	
1,575	1,525	769	1,527	1,196	Imports	Concrete Roofing Tiles
477	611	696	890	752	Exports	
3,908	3,185 (R)	3,543 (R)	3,016 (R)	3,548	Imports	Other Concrete Tiles & Paving
2,898	2,561	4,533	4,320	2,194	Exports	
6,095	6,963	6,841 (R)	9,080 (R)	5,810	Imports	Prefabricated Concrete Products
2,204	2,911	4,031	3,188 (R)	2,128	Exports	
9,489	10,804 (R)	11,352 (R)	11,826 (R)	11,380	Imports	Concrete Pipes
8,885	7,119	6,978	6,006 (R)	4,228	Exports	

## EXTERNAL TRADE

**Table 14 : Value of Overseas Trade in Selected Materials and Components for Constructional Use : Imports (cif) & Exports (fob)**

United Kingdom		Current Prices (£'000)					
		2005	2006	2007	2008	2009	2010
<b>Products &amp; Components (continued)</b>							
Structural Units (steel)	Imports	308,125	361,685	526,140	564,645	470,772	594,062
	Exports	401,831	445,237	498,331	604,520	505,127	485,248
Structural Units (aluminium)	Imports	147,050	149,756	220,258	251,909	292,334	176,577
	Exports	72,729	81,708	81,777	98,289	71,158	54,923
Steel Tubes & Hollow Sections	Imports	94,193	117,181	142,420	157,616	108,794	130,905
	Exports	93,134	109,871	114,756	132,537	82,990	108,495
Bituminous Roofing Felt	Imports	19,560	21,082	25,627	30,853	35,139	39,722
	Exports	5,439	5,756	5,406	3,507	3,392	2,744
Other Asphalt products	Imports	9,488	8,449	9,966	9,999	9,987	10,488
	Exports	12,814	16,756	16,768	18,030	19,595	14,474
Mineral Insulating Materials	Imports	81,459	84,002	81,851	78,961	74,096	80,838
	Exports	115,427	137,321	139,360	132,697	106,865	146,419
Glass Fibre	Imports	1,240	2,667	1,482	1,185	552	381
	Exports	1,270	820	1,188	2,829	1,220	1,075
Fibre Cement Products	Imports	22,167	24,343	31,344	28,053	28,663	31,020
	Exports	7,403	6,619	6,668	7,680	4,847	5,849
Building Plasters <sup>1</sup>	Imports	6,740	5,726	6,172	6,868	8,845	..
	Exports	6,325	8,122	7,622	8,077	7,475	..
Plasters <sup>1</sup>	Imports	..	..	..	..	..	13,687
	Exports	..	..	..	..	..	7,904
Plasterboard	Imports	37,787	34,275	30,302	16,057	13,683	14,771
	Exports	16,723	24,261	19,798	18,397	16,505	12,912
Copper Pipes	Imports	152,310	212,455	217,861	245,212	182,487	239,712
	Exports	124,771	167,830	153,412	171,581	116,520	145,621
Lead Pipes & Fittings	Imports	114	168	93	18	509	148
	Exports	1,768	204	48	626	209	243
Zinc Pipes & Fittings	Imports	179	328	1,154	918	494	757
	Exports	3,989	5,446	7,166	6,016	4,388	914
Other Zinc Building Products	Imports	11,993	14,481	12,447	13,117	10,409	12,982
	Exports	21,052	23,874	20,946	22,026	22,639	26,521
Plastic Pipes	Imports	84,353	100,143	114,727	133,929	117,126	157,909
	Exports	170,734	187,793	205,332	211,718	202,745	214,952
Other Plastic Building Products	Imports	116,565	133,409	148,828	149,235	138,250	147,068
	Exports	99,630	100,498	115,008	117,407	96,902	109,638
Builders Ironmongery	Imports	389,610	452,336	498,373	505,665	278,144	311,668
	Exports	130,262	155,065	157,424	165,476	94,402	112,653
Nails & Screws	Imports	48,017	51,836	59,853	61,080	48,123	66,803
	Exports	14,170	15,228	12,553	12,851	8,281	8,846
Mastics, Putty	Imports	126,301	138,982	148,599	151,898	132,061	141,627
	Exports	82,530	95,347	103,998	119,256	110,080	116,457
Paints & Varnishes	Imports	297,691	315,961	339,581	356,451	345,977	385,980
	Exports	421,283	436,044	442,126	551,564	503,518	551,861

<sup>1</sup> From Q1 2010 onwards the Plasters category will contain Building Plaster and Other Plasters

**30** as Building Plasters data is no longer collected

## EXTERNAL TRADE

Current Prices (£'000)

2009 Q4	2010 Q1	Q2	Q3	Q4	Products & Components (continued)	
133,260	106,019 (R)	151,257 (R)	225,200 (R)	111,586	Imports	Structural Units (steel)
149,210	91,040	152,215 (R)	131,586 (R)	110,407	Exports	
54,979	43,934 (R)	45,059 (R)	50,634 (R)	36,950	Imports	Structural Units (aluminium)
15,374	13,598	14,053	15,414 (R)	11,858	Exports	
23,541	29,719 (R)	34,118 (R)	35,708 (R)	31,360	Imports	Steel Tubes & Hollow Sections
20,267	29,023	24,979 (R)	26,679 (R)	27,814	Exports	
8,286	9,507	9,931	10,155	10,129	Imports	Bituminous Roofing Felt
775	575	829	709	631	Exports	
1,989	1,773	2,255 (R)	3,481 (R)	2,979	Imports	Other Asphalt products
6,004	4,314	3,456	3,906	2,798	Exports	
20,388	19,269	20,967	21,750 (R)	18,852	Imports	Mineral Insulating Materials
27,089	32,947	37,791	39,416 (R)	36,265	Exports	
144	89	102	132	58	Imports	Glass Fibre
14	147	383	249	296	Exports	
6,341	7,022	7,845	8,698 (R)	7,455	Imports	Fibre Cement Products
1,285	1,038	1,102	2,170	1,539	Exports	
2,384	..	..	..	..	Imports	Building Plasters <sup>1</sup>
1,660	..	..	..	..	Exports	
..	3,497 (R)	3,150	3,856 (R)	3,184	Imports	Plasters <sup>1</sup>
..	2,331	1,851	1,940	1,782	Exports	
3,068	3,663	4,007 (R)	3,360 (R)	3,741	Imports	Plasterboard
3,026	3,528	3,720	2,986	2,678	Exports	
48,405	62,906 (R)	63,461 (R)	58,424 (R)	54,921	Imports	Copper Pipes
33,097	33,575	37,039 (R)	35,747 (R)	39,260	Exports	
180	146	0	0	2	Imports	Lead Pipes & Fittings
13	1	116	96	30	Exports	
142	137	202	185	233	Imports	Zinc Pipes & Fittings
1,276	567	152	84	111	Exports	
2,672	2,741	3,877 (R)	3,343	3,021	Imports	Other Zinc Building Products
5,968	6,436	7,013	6,332 (R)	6,740	Exports	
30,800	38,592 (R)	42,981 (R)	39,976 (R)	36,360	Imports	Plastic Pipes
40,955	48,932	60,016 (R)	59,567 (R)	46,437	Exports	
33,365	35,605 (R)	37,516 (R)	40,630 (R)	33,317	Imports	Other Plastic Building Products
24,746	24,300	27,940 (R)	30,649 (R)	26,749	Exports	
71,314	75,362 (R)	81,282 (R)	79,923 (R)	75,101	Imports	Builders Ironmongery
24,696	26,838 (R)	28,705 (R)	28,896 (R)	28,214	Exports	
12,484	15,367	15,702 (R)	19,437 (R)	16,297	Imports	Nails & Screws
2,135	2,021	2,344	2,394 (R)	2,087	Exports	
32,632	32,604 (R)	37,679 (R)	36,589 (R)	34,755	Imports	Mastics, Putty
29,759	26,238 (R)	31,485	29,839 (R)	28,895	Exports	
83,714	93,392 (R)	98,097 (R)	104,311 (R)	90,180	Imports	Paints & Varnishes
124,318	119,267 (R)	149,379 (R)	147,476 (R)	135,739	Exports	

<sup>1</sup> From Q1 2010 onwards the Plasters category will contain Building Plaster and Other Plasters as Building Plasters data is no longer collected

## EXTERNAL TRADE

**Table 14 : Value of Overseas Trade in Selected Materials and Components for Constructional Use : Imports (cif) & Exports (fob)**

United Kingdom		Current Prices (£'000)					
		2005	2006	2007	2008	2009	2010
<b>Products &amp; Components (continued)</b>							
Unglazed Ceramic Tiles	Imports	48,737	54,271	64,691	71,099	62,181	56,492
	Exports	2,777	2,475	4,420	3,607	2,424	2,829
Glazed Ceramic Tiles	Imports	285,488	285,080	290,867	279,656	256,303	221,963
	Exports	17,217	21,444	20,554	17,706	15,671	15,455
Ceramic Sanitaryware	Imports	157,865	173,687	181,603	174,194	159,123	168,248
	Exports	48,004	54,231	58,229	53,471	37,635	37,730
Plastic Sanitaryware	Imports	98,663	105,586	126,472	120,004	114,695	112,054
	Exports	68,603	78,717	78,811	83,908	79,444	67,353
Metal Sanitaryware	Imports	110,303	123,203	139,820	143,118	111,737	123,917
	Exports	34,553	32,212	33,511	33,167	31,969	28,261
Flat Glass	Imports	53,410	55,901	71,800	61,061	53,819	60,769
	Exports	51,502	67,142	83,174	107,783	60,380	73,175
Other Glass Products	Imports	67,274	78,695	76,235	98,993	82,857	81,182
	Exports	25,896	31,631	37,712	40,296	34,188	32,659
Wood Veneers	Imports	35,329	40,586	38,516	39,407	26,102	31,672
	Exports	9,663	10,607	10,243	10,034	5,747	5,824
Wood Mouldings	Imports	69,452	79,513	73,907	64,579	55,648	65,717
	Exports	18,922	20,362	18,289	11,169	8,861	9,660
Wood Block Flooring	Imports	117,318	132,978	125,111	125,242	112,661	144,225
	Exports	8,086	8,448	5,465	6,136	5,746	4,529
Other Builder's Woodwork	Imports	78,356	93,869	109,023	101,242	80,645	99,248
	Exports	13,299	21,562	19,079	15,908	14,395	14,320
Windows (wood)	Imports	66,201	71,679	84,257	121,171	110,061	111,607
	Exports	5,693	9,465	12,880	10,219	10,721	7,614
Doors (wood)	Imports	164,036	191,637	205,158	209,133	184,609	217,279
	Exports	29,901	38,546	37,008	26,929	19,395	15,115
Doors & Windows (steel)	Imports	57,661	54,493	40,294	39,652	39,726	35,530
	Exports	20,146	21,231	25,824	26,300	20,643	19,220
Doors & Windows (aluminium)	Imports	61,543	68,235	65,655	63,705	64,279	70,312
	Exports	27,784	35,883	32,687	25,473	24,410	19,947
Doors & Windows (plastic)	Imports	27,227	41,045	39,459	39,377	43,885	46,656
	Exports	63,205	68,641	63,218	56,119	41,193	45,299
Cork Tiles	Imports	2,042	2,540	2,877	2,258	1,779	2,948
	Exports	1,661	2,878	1,611	1,641	1,702	1,646
Linoleum Floor Coverings	Imports	179,151	213,518	242,787	256,585	244,149	278,129
	Exports	178,384	188,215	195,735	224,522	213,628	228,660
Wallpaper	Imports	39,128	40,997	58,962	58,636	54,487	56,522
	Exports	55,455	54,868	67,165	73,506	66,782	82,428
Textile Wall Coverings	Imports	1,314	1,187	1,572	2,833	2,346	3,319
	Exports	485	373	598	500	357	581

Current Prices (£'000)

2009 Q4	2010 Q1	Q2	Q3	Q4	Products & Components (continued)	
17,041 589	13,664 (R) 641	13,863 (R) 589	15,249 (R) 858 (R)	13,716 741	Imports Exports	Unglazed Ceramic Tiles
65,282 4,048	53,221 (R) 3,010	56,379 (R) 3,877	57,701 (R) 4,266 (R)	54,662 4,302	Imports Exports	Glazed Ceramic Tiles
41,699 9,544	46,682 8,038 (R)	39,454 (R) 9,283	39,705 (R) 10,306 (R)	42,407 10,103	Imports Exports	Ceramic Sanitaryware
27,675 19,249	29,769 16,979 (R)	28,066 (R) 18,002	28,228 (R) 17,785 (R)	25,991 14,587	Imports Exports	Plastic Sanitaryware
27,939 8,687	33,444 7,511	27,641 (R) 6,193	29,693 (R) 6,769 (R)	33,139 7,788	Imports Exports	Metal Sanitaryware
14,311 16,698	12,479 (R) 16,512	13,948 (R) 18,559	16,719 (R) 20,330 (R)	17,623 17,774	Imports Exports	Flat Glass
19,400 10,166	19,186 7,427	20,835 (R) 8,686	22,188 (R) 8,404 (R)	18,973 8,142	Imports Exports	Other Glass Products
6,132 1,636	7,015 (R) 1,249 (R)	7,634 (R) 1,166	7,225 (R) 1,474 (R)	9,798 1,935	Imports Exports	Wood Veneers
12,179 1,954	17,530 (R) 2,069 (R)	18,052 (R) 2,816	17,447 (R) 2,665	12,688 2,110	Imports Exports	Wood Mouldings
31,266 1,220	35,233 (R) 1,067 (R)	35,119 (R) 1,229 (R)	39,610 (R) 981	34,263 1,252	Imports Exports	Wood Block Flooring
21,752 3,428	21,144 (R) 2,834 (R)	26,847 (R) 3,593	27,498 (R) 3,895 (R)	23,759 3,998	Imports Exports	Other Builder's Woodwork
27,512 1,745	26,459 (R) 2,266	27,578 (R) 1,956	28,830 (R) 1,524 (R)	28,740 1,868	Imports Exports	Windows (wood)
42,686 4,165	47,075 3,525 (R)	56,015 3,789 (R)	62,771 (R) 4,314 (R)	51,418 3,487	Imports Exports	Doors (wood)
9,423 4,323	8,367 4,757	8,230 4,314	9,981 (R) 4,730	8,952 5,419	Imports Exports	Doors & Windows (steel)
15,995 10,562	13,615 4,621	15,975 5,437	18,717 (R) 5,362 (R)	22,005 4,527	Imports Exports	Doors & Windows (aluminium)
11,733 10,601	12,056 14,207	13,600 (R) 11,470	9,976 10,451 (R)	11,024 9,171	Imports Exports	Doors & Windows (plastic)
471 462	525 467	875 336	819 (R) 435	729 408	Imports Exports	Cork Tiles
60,864 54,499	66,548 (R) 57,454	67,818 (R) 62,655 (R)	71,258 (R) 58,015 (R)	72,505 50,536	Imports Exports	Linoleum Floor Coverings
15,451 17,986	14,537 19,872	15,840 21,139	12,588 (R) 19,920 (R)	13,557 21,497	Imports Exports	Wallpaper
646 108	758 195	753 103	942 163	866 120	Imports Exports	Textile Wall Coverings

## EXTERNAL TRADE

**Table 14 : Value of Overseas Trade in Selected Materials and Components for Constructional Use : Imports (cif) & Exports (fob)**

United Kingdom		Current Prices (£'000)					
		2005	2006	2007	2008	2009	2010
<b>Products &amp; Components (continued)</b>							
Fitted Kitchens (assembled)	Imports	88,220	98,938	144,017	171,688	130,058	109,844
	Exports	38,898	34,260	35,322	24,163	17,307	16,001
Prefabricated Buildings (wood)	Imports	18,617	21,986	49,086	40,341	34,264	31,867
	Exports	14,075	22,603	27,807	15,170	13,234	10,452
Prefabricated Buildings (steel)	Imports	25,459	30,281	30,083	50,546	46,291	29,663
	Exports	12,814	42,881	27,464	46,140	48,512	37,010
Prefabricated Buildings (other)	Imports	52,602	67,586	73,414	74,165	44,887	34,323
	Exports	90,503	45,997	35,795	72,310	28,104	17,355
Mobile Homes	Imports	8,300	7,196	7,113	6,574	5,065	2,165
	Exports	12,000	8,574	11,291	7,250	7,750	3,559
Taps & Valves	Imports	209,659	265,657	277,804	315,427	269,199	321,817
	Exports	51,133	62,345	72,708	60,597	64,447	73,145
Pumps (circulating)	Imports	20,706	25,544	24,274	21,754	19,900	21,874
	Exports	24,986	28,407	27,131	27,964	23,603	32,078
Central Heating Boilers	Imports	433,201	473,691	493,841	547,726	566,588	549,915
	Exports	72,126	76,578	70,581	80,756	91,053	74,543
Radiators	Imports	173,674	193,948	197,513	184,218	175,518	189,076
	Exports	30,596	37,707	46,937	57,884	34,303	31,010
Water Heaters	Imports	64,514	75,237	88,897	105,755	105,711	84,680
	Exports	70,225	67,902	64,471	84,810	64,883	62,951
Space Heaters	Imports	139,190	120,029	107,581	110,403	114,047	135,298
	Exports	47,604	39,930	37,313	35,118	32,068	31,515
Fan Systems	Imports	134,486	152,830	198,750	161,772	127,327	171,589
	Exports	94,317	132,081	94,651	114,006	107,846	109,256
Air Conditioning Equipment	Imports	360,514	379,149	514,454	644,353	462,588	527,491
	Exports	218,235	201,257	231,144	268,134	240,594	270,121
Air Purifying Equipment	Imports	37,950	31,441	29,828	41,389	50,854	51,138
	Exports	108,351	114,377	120,706	138,002	102,158	148,515
Hand Driers	Imports	3,887	5,010	4,057	7,634	7,443	8,987
	Exports	1,177	1,036	1,648	1,017	1,247	1,905
Meters	Imports	20,971	25,666	24,502	24,155	24,237	28,701
	Exports	22,699	25,025	26,216	47,988	42,969	52,398
Plugs & Sockets	Imports	183,550	232,657	231,664	269,479	257,049	302,299
	Exports	106,743	169,346	148,672	153,173	137,529	182,194
Electrical Wires	Imports	789,156	1,028,495	1,303,905	1,236,486	909,830	1,212,194
	Exports	392,062	458,568	521,508	554,723	425,815	514,117
Electrical Insulators	Imports	32,793	37,729	30,477	34,957	29,102	30,601
	Exports	38,222	28,858	33,830	32,548	26,983	32,412
Lamps & Fittings	Imports	354,173	392,781	449,230	462,930	424,435	513,005
	Exports	179,800	195,049	221,180	236,971	223,741	215,790
Fire & Security Alarms	Imports	140,511	153,054	144,891	139,973	136,550	151,473
	Exports	130,795	150,929	154,520	182,447	238,608	207,946
Lifts & Escalators	Imports	112,695	104,250	118,401	129,307	115,017	94,061
	Exports	11,664	24,833	43,142	28,699	19,697	14,626

## EXTERNAL TRADE

Current Prices (£'000)

2009 Q4	2010 Q1	Q2	Q3	Q4	Products & Components (continued)	
33,979	27,183	26,230 (R)	30,839 (R)	25,592	Imports	Fitted Kitchens (assembled)
5,143	3,469	3,448	4,826 (R)	4,258	Exports	
4,961	8,728	9,721 (R)	7,582 (R)	5,836	Imports	Prefabricated Buildings (wood)
3,645	4,996	1,961	1,957 (R)	1,538	Exports	
5,118	4,744	8,700	9,184 (R)	7,035	Imports	Prefabricated Buildings (steel)
4,470	9,649	11,858	7,949 (R)	7,554	Exports	
6,304	9,228	11,056 (R)	9,826	4,213	Imports	Prefabricated Buildings (other)
7,299	4,910	6,150	3,746	2,549	Exports	
871	481	908	639	137	Imports	Mobile Homes
1,712	443	1,308	1,002	806	Exports	
72,973	81,430	81,730 (R)	83,404 (R)	75,253	Imports	Taps & Valves
18,958	15,993 (R)	17,778	20,033 (R)	19,341	Exports	
5,986	6,215 (R)	5,433	5,310 (R)	4,916	Imports	Pumps (circulating)
7,664	7,357	5,411	13,555 (R)	5,755	Exports	
155,642	126,761 (R)	135,621 (R)	132,526 (R)	155,007	Imports	Central Heating Boilers
22,821	17,062	17,127	17,695 (R)	22,659	Exports	
49,317	53,669	43,474 (R)	45,109 (R)	46,824	Imports	Radiators
8,605	7,853	7,732	7,593 (R)	7,832	Exports	
19,983	18,243 (R)	21,672	23,572 (R)	21,193	Imports	Water Heaters
16,825	14,358	17,416 (R)	14,706 (R)	16,471	Exports	
39,321	26,169 (R)	27,811	37,616 (R)	43,702	Imports	Space Heaters
9,742	7,660 (R)	6,622 (R)	7,120 (R)	10,113	Exports	
33,985	39,842	44,743 (R)	46,547 (R)	40,457	Imports	Fan Systems
27,215	24,102	26,657 (R)	27,359 (R)	31,138	Exports	
115,268	123,614	142,968 (R)	142,308 (R)	118,601	Imports	Air Conditioning Equipment
76,975	67,134	71,079	64,424 (R)	67,484	Exports	
13,042	12,501 (R)	11,472 (R)	13,585 (R)	13,580	Imports	Air Purifying Equipment
23,116	28,119 (R)	37,077 (R)	41,624 (R)	41,695	Exports	
1,659	2,201	2,040	2,281 (R)	2,465	Imports	Hand Driers
336	285	592	508	520	Exports	
7,379	7,413	7,449	6,896	6,943	Imports	Meters
14,151	10,351	12,397	16,648 (R)	13,002	Exports	
65,177	67,546 (R)	75,273 (R)	81,180 (R)	78,300	Imports	Plugs & Sockets
38,466	42,926 (R)	46,423 (R)	48,150 (R)	44,695	Exports	
261,279	270,032 (R)	299,321 (R)	318,417 (R)	324,424	Imports	Electrical Wires
115,748	127,508 (R)	125,682 (R)	131,539 (R)	129,388	Exports	
6,459	6,612 (R)	11,104 (R)	6,179 (R)	6,706	Imports	Electrical Insulators
6,923	7,780	9,765	7,721 (R)	7,146	Exports	
107,931	118,102 (R)	123,732 (R)	144,374 (R)	126,797	Imports	Lamps & Fittings
59,044	49,660	51,471 (R)	56,428 (R)	58,231	Exports	
32,583	36,029	39,874	40,677	34,893	Imports	Fire & Security Alarms
58,349	75,259 (R)	44,356 (R)	44,776 (R)	43,555	Exports	
20,894	22,314	25,851 (R)	24,173 (R)	21,723	Imports	Lifts & Escalators
4,690	2,704	3,596	4,184 (R)	4,142	Exports	





**Major Revisions:**

The 2010 Annual Ready-Mixed Concrete Deliveries (Table 13) has been revised, due to a publishing error, as the previously published total only contained the data for the first three quarters of 2010. The new figure contains data for all four quarters of 2010.

Apologies for any inconvenience caused.

© Crown copyright 2011

Published under licence from the Controller of Her Majesty's Stationery Office.

Applications for reproductions should be made in writing to :-

The Copyright Unit, Her Majesty's Stationery Office, St. Clements House,  
2-16 Colegate, Norwich NR3 1BQ

March 2011

URN 11 / 313b

ISSN 0264-6188