

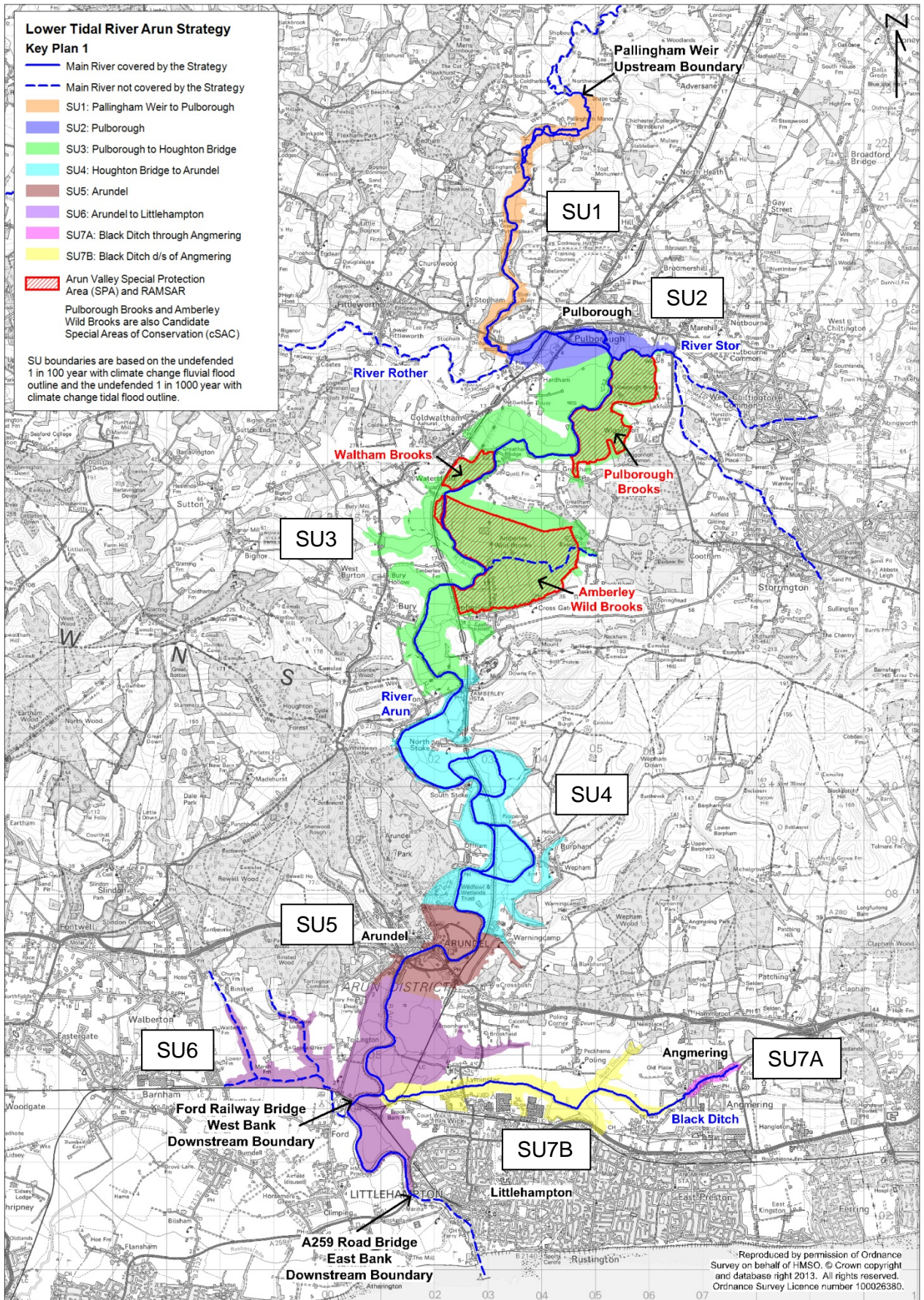
**Lower Tidal River Arun Strategy**

**Key Plan 1**

- Main River covered by the Strategy
- - - Main River not covered by the Strategy
- SU1: Pallingham Weir to Pulborough
- SU2: Pulborough
- SU3: Pulborough to Houghton Bridge
- SU4: Houghton Bridge to Arundel
- SU5: Arundel
- SU6: Arundel to Littlehampton
- SU7A: Black Ditch through Angmering
- SU7B: Black Ditch d/s of Angmering

- Arun Valley Special Protection Area (SPA) and RAMSAR
- Pulborough Brooks and Amberley Wild Brooks are also Candidate Special Areas of Conservation (cSAC)

SU boundaries are based on the undefended 1 in 100 year with climate change fluvial flood outline and the undefended 1 in 1000 year with climate change tidal flood outline.



Reproduced by permission of Ordnance Survey on behalf of HMSO. © Crown copyright and database right 2013. All rights reserved. Ordnance Survey Licence number 100026380.