



Environment
Agency
Asiantaeth yr
Amgylchedd

Water for life and livelihoods

River Basin Management Plan
Severn River Basin District

Annex M: Competent authorities

Contents

<u>M1</u>	<u>Introduction</u>	<u>2</u>
<u>M2</u>	<u>Names and addresses of competent authorities</u>	<u>2</u>
<u>M3</u>	<u>Geographical coverage of river basin district</u>	<u>3</u>
<u>M4</u>	<u>Legal status of competent authorities</u>	<u>4</u>
<u>M5</u>	<u>Responsibilities of competent authorities</u>	<u>4</u>
<u>M6</u>	<u>Membership</u>	<u>4</u>
<u>M7</u>	<u>Contact points and procedures</u>	<u>5</u>

M1 Introduction

This annex sets out the names and addresses of competent authorities for river basin planning within the river basin district and a note of their legal status and responsibilities. The annex also gives, for external enquirers, our contact points and procedures for obtaining background documentation and information.

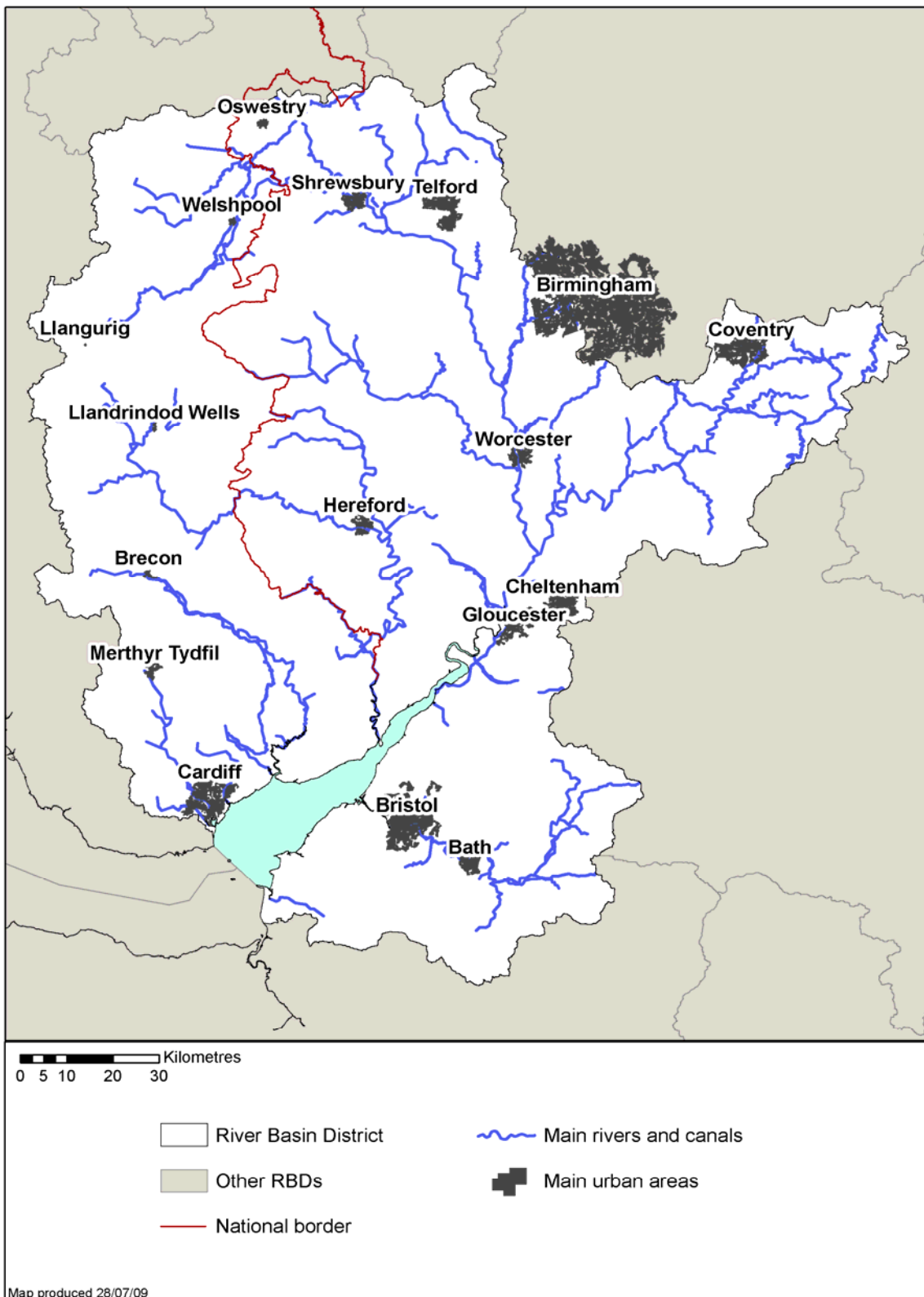
M2 Names and addresses of competent authorities

Secretary of State for Environment, Food and Rural Affairs
Nobel House, 17 Smith Square, London, UK SW1P 3JR

National Assembly for Wales
Cardiff Bay, Cardiff, CF99 1NA

Environment Agency
Rio House, Waterside Drive, Aztec West,
Almondsbury, Bristol, UK BS32 4UD

M3 Geographical coverage of river basin district



© Environment Agency copyright and / or database right 2009. All rights reserved. This map includes data supplied under licence from: © Crown Copyright and database right 2009. All rights reserved. Ordnance Survey licence number 100026380. Some river features of this map are based on digital spatial data licensed from the Centre for Ecology and Hydrology, © CEH. Licence number 198 version 2.

M4 Legal status of competent authorities

Secretary of State:

The Secretary of State is legally part of the Crown and is not established in legislation.

National Assembly for Wales:

The National Assembly for Wales was established by the Government of Wales Act 1998.

<http://www.opsi.gov.uk/acts/acts1998/19980038.htm>

Environment Agency:

The Environment Agency is a non-departmental public body established by the Environment Act 1995.

http://www.opsi.gov.uk/acts/acts1995/Ukpga_19950025_en_1.htm

M5 Responsibilities of competent authorities

In England and Wales there are two competent authority roles – the “appropriate authority” role undertaken by the Secretary of State / National Assembly for Wales and the “Agency” role undertaken by the Environment Agency.

The “appropriate authority” has general responsibility for ensuring the Directive is given effect. That authority also has specific responsibilities for ensuring that appropriate economic analysis is carried out, approving proposals for environmental objectives and programmes of measures, and approving the draft River Basin Management Plans. The appropriate authority may also give guidance or directions to the “Agency”, and any other public body, on the practical implementation of the Directive. The appropriate authority for a river basin district also has the duty to ensure that the requirements of the Directive are given effect in relation to that district as a whole.

The “Agency” is responsible for carrying out the analysis required for characterisation, monitoring, identifying waters used for the abstraction of drinking water, and establishing a register of those waters and other protected areas. It has to prepare proposals for environmental objectives and programmes of measures for each river basin district, and prepare draft River Basin Management Plans. The Agency must also ensure public participation in preparation of the River Basin Management Plan and make certain information required under the Water Framework Directive accessible to the public.

The competent authorities for Severn river basin district are the Secretary of State, the National Assembly for Wales and the Environment Agency. The “appropriate authority” responsibilities are placed upon the Secretary of State and the National Assembly for Wales, acting jointly. The “Agency” responsibilities are placed upon the Environment Agency.

M6 Membership

Not applicable.

(The Water Framework Directive requires us to record if a competent authority acts as a coordinating body for other competent authorities and, if so, what is the membership of that group).

M7 Contact points and procedures

The initial point of contact is the Severn River Basin District Programme Manager who will coordinate a response to queries:

Chris Tidridge, Severn River Basin District Programme Manager

Environment Agency, Sapphire East, 550 Streetsbrook Road, Solihull, West Midlands, B91 1QT

Tel: 0780 223 4940

e-mail: christopher.tidridge@environment-agency.gov.uk.