

Figure C1 **Difference Between the 7 day Rainfall at Catfield Hall and that at Barton Hall (Met. Office processed)**

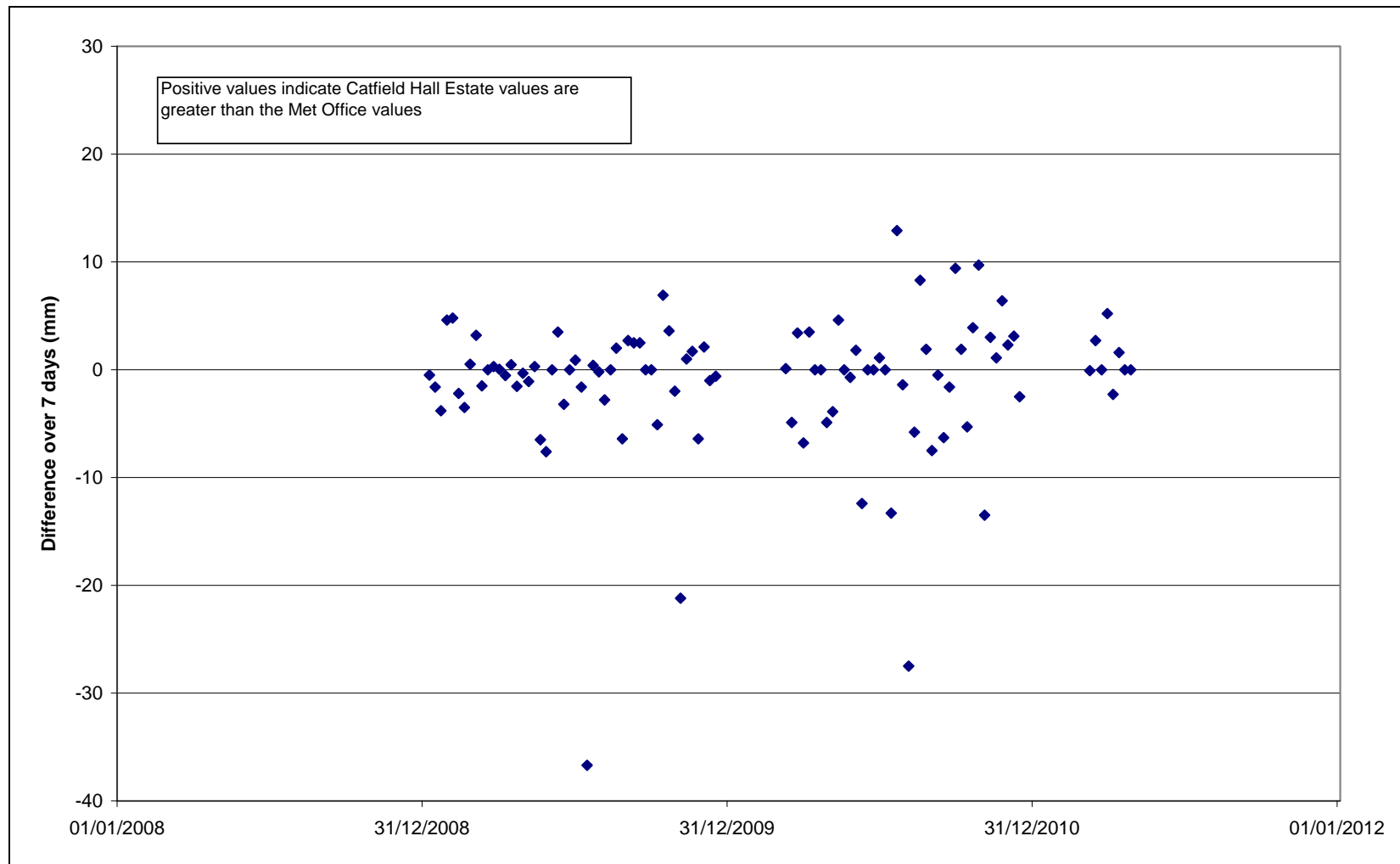


Figure C2 Difference Between the 7 Day Rainfall at Catfield Hall and that at Ormesby St Michael (Met. Office processed)

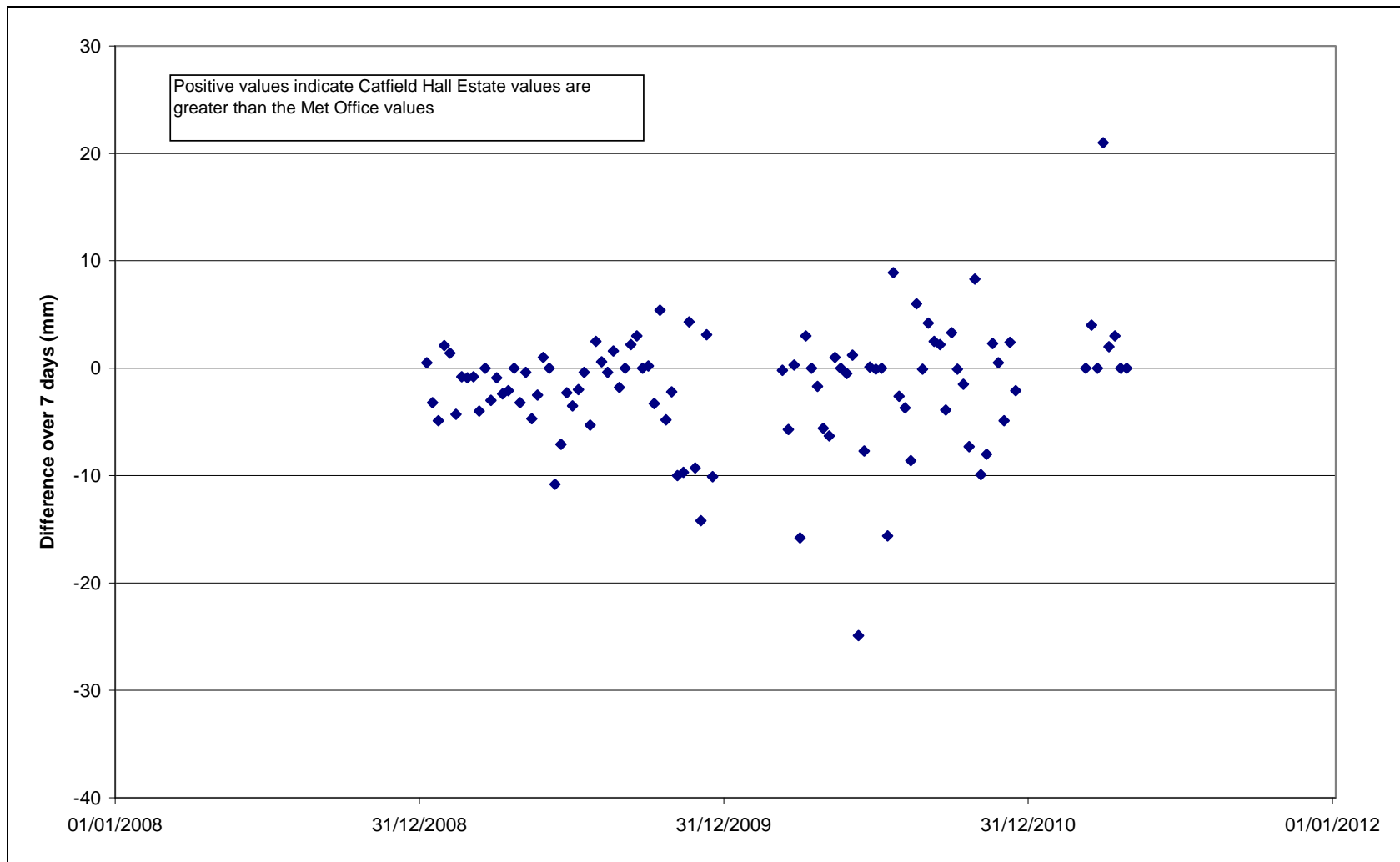


Figure C3 – Difference Between the 7 Day Rainfall at Catfield Hall and that at Buxton Dudwick Cottage (Met Office processed)

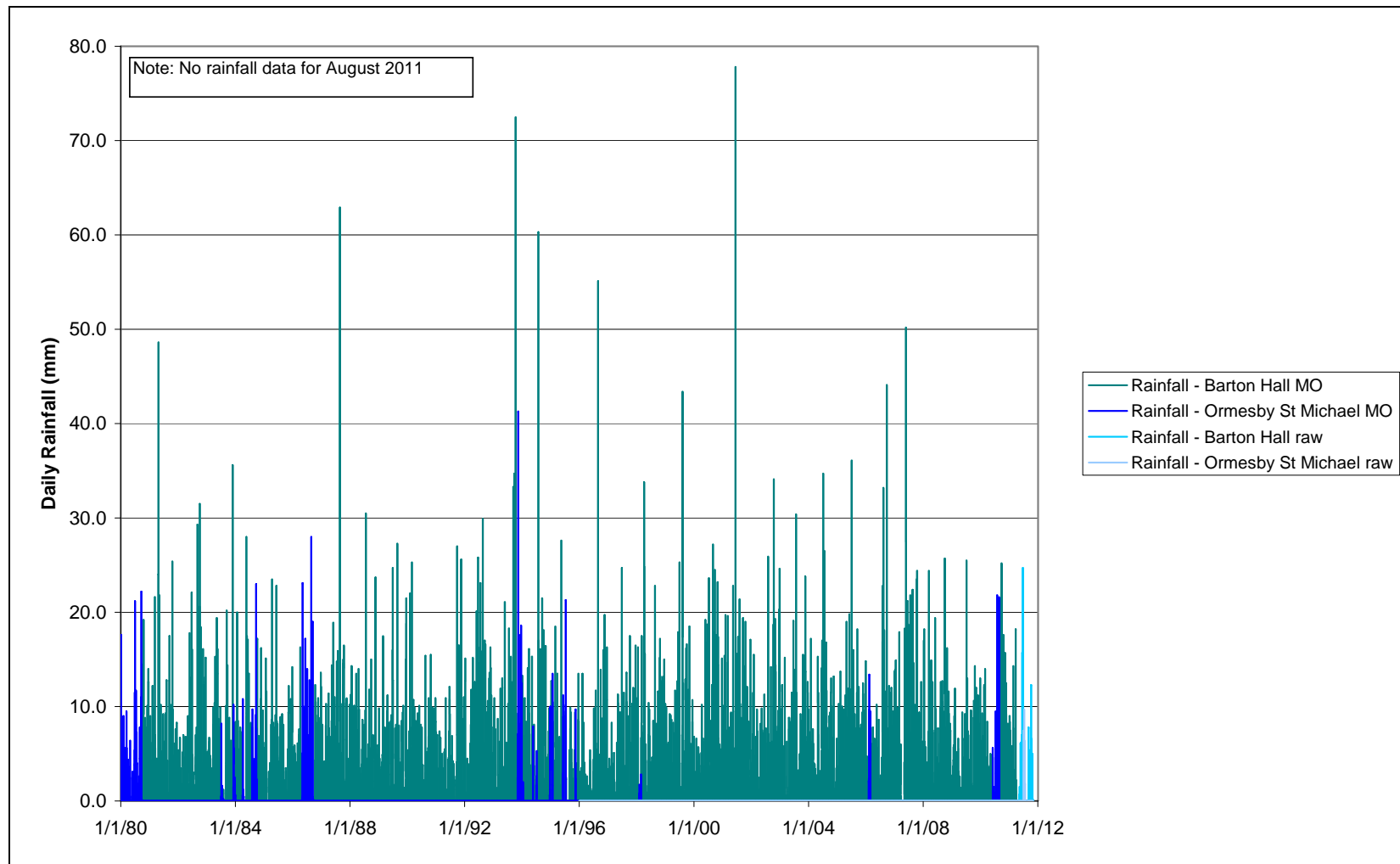


Figure C4 Chosen Composite Rainfall Record showing Sources of Data

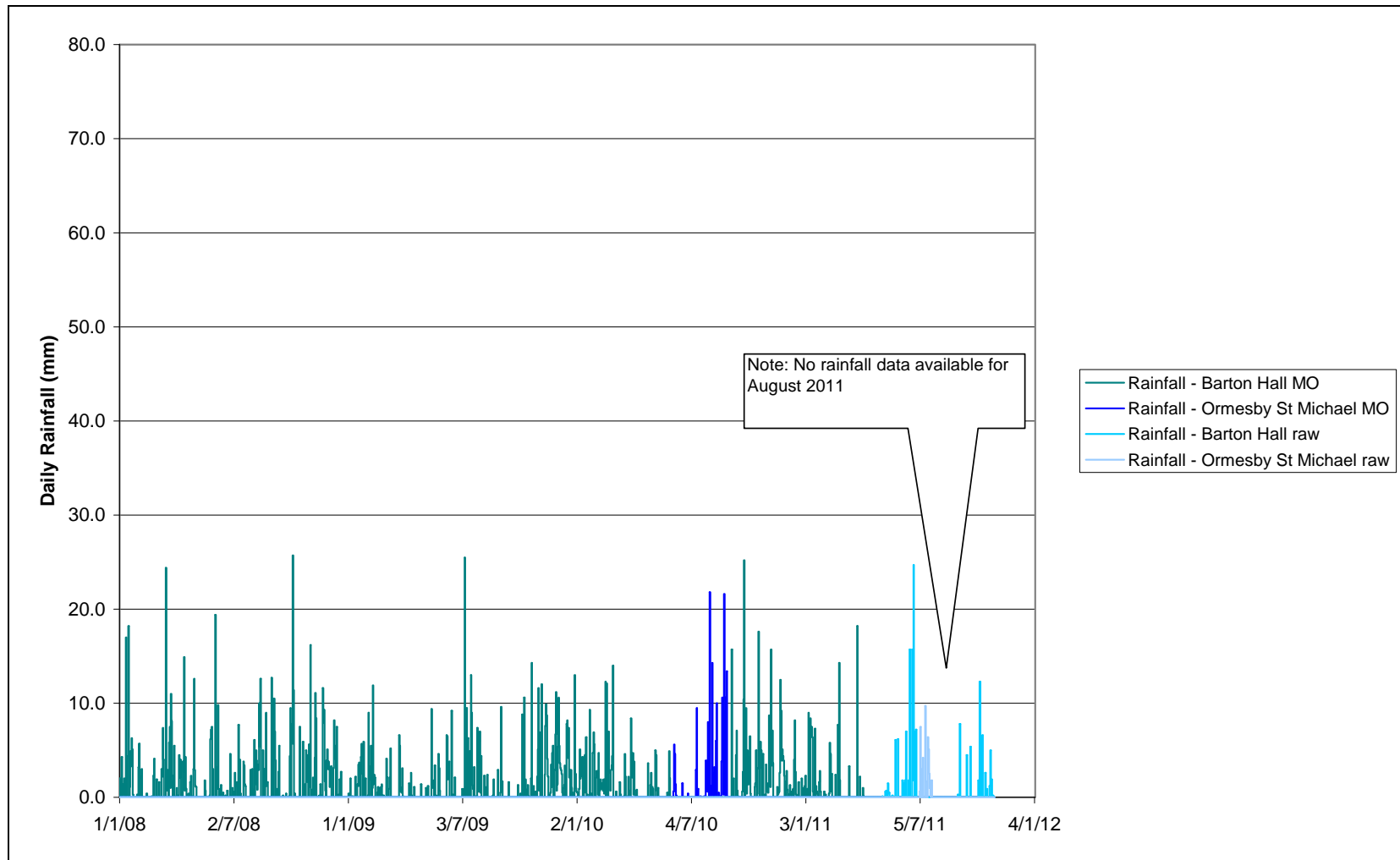


Figure C5 Chosen Composite Rainfall Record showing Sources of Data (2008-2011)

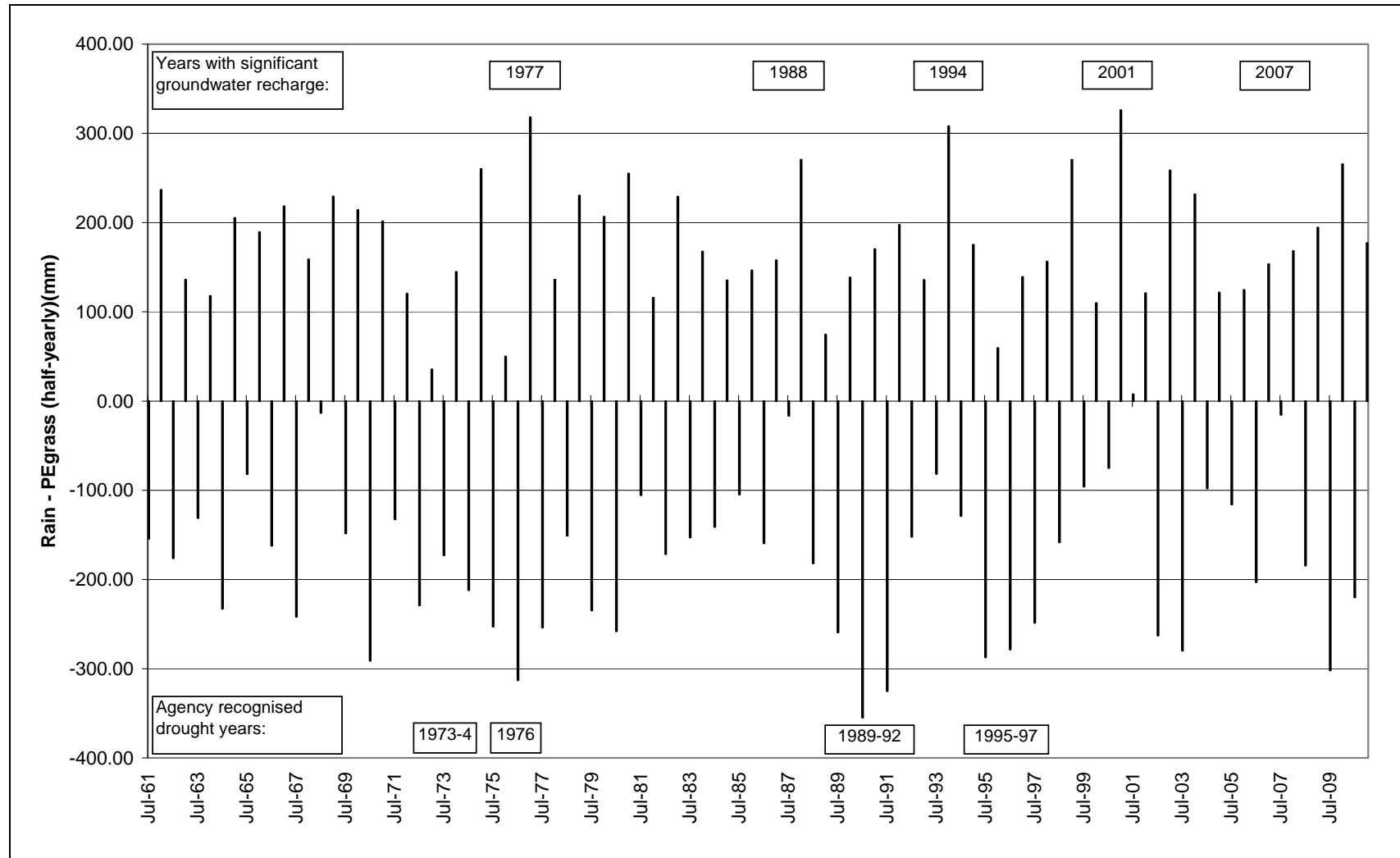


Figure C6 Half Yearly Rainfall – PEGrass (ie effective rainfall, the year being divided into two periods October – March and April – September)

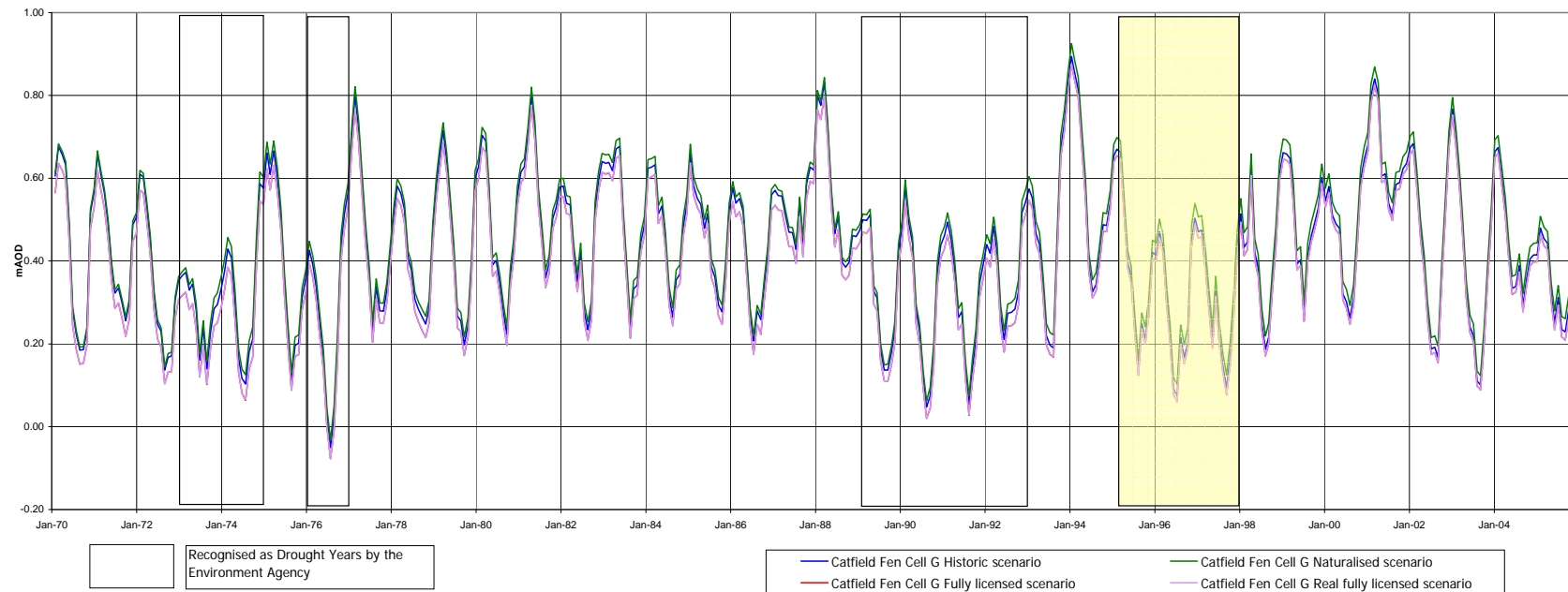


Figure C7 Modelled Groundwater Heads at Catfield Fen under different abstraction scenarios (Layer 1, row 137 column 308, cell G). The cell location covers Rose Fen and the northern half of Long Marsh (Adapted from Figure 7.14, Entec, 2009) (Note: the Ludham PWS licensed quantity used in the model is its former 680 Ml/a, not its current 512 Ml/a)