



Statistical Notice



WAR PENSIONS STATISTICS, SEPTEMBER 2010

9 December 2010

Theme: Other - Defence

Issued by

Defence Analytical Services and
Advice (DASA)
Ministry of Defence
Enslough
Bath
BA1 5AB

Enquiries:

Press Office:
Tel: 020 721 83253
Statistical Enquiries:
Dr Kate Harrison
DASA Health Information
Head of Branch
Tel: 01225 468456
Fax: 01225 468918
kate.harrison@dasa.mod.uk

DASA Welcome

Feedback

If you have any comments
or questions about this
publication or about DASA
statistics in general, you
can contact us as follows:

E-mail:

DASA-enquiriesmailbox@mod.uk

Visit the DASA website

(www.dasa.mod.uk)

and complete the feedback
form.

A National Statistics publication

National Statistics are produced to
high professional standards. They
undergo regular quality assurance
reviews to ensure that they meet
customer needs. They are
produced free from any political
interference.

For general enquiries about
National Statistics, contact the
National Statistics Customer
Contact Centre:

Tel: 0845 601 3034

Fax: 01633 652747

Minicom: 01633 812399

E-mail: info@statistics.gov.uk

Internet: www.statistics.gov.uk

INTRODUCTION

This Statistical Notice provides summary statistics on recipients of War Pensions and new claims, awards and appeals made under the War Pension Scheme (WPS).

Pensions, allowances or other payments may be awarded under the WPS to eligible claimants where disablement or death occurs as a result of Service in HM Forces, prior to 6 April 2005.

Figures presented in this Statistical Notice are calculated from data stored on the Service Personnel and Veterans' Agency's War Pensions Computer System.

The Armed Forces and Reserve Forces Compensation Scheme (AFCS) came into force on 6 April 2005 to pay compensation for injury, illness or death caused by Service on or after that date. Summary statistics for the AFCS can be found in a separate quarterly report at www.dasa.mod.uk under 'All Other Publications' and 'Health/Medical Statistics'.

It is proposed that one further bi-annual publication will be released in June 2011, with figures as at 31 March 2011. From this point on publications will be released on an annual basis, reporting end of financial year data (31 March) in June. A consultation tool will be available on the DASA website early next year if you have any comments or queries regarding this proposed change in frequency.

KEY POINTS

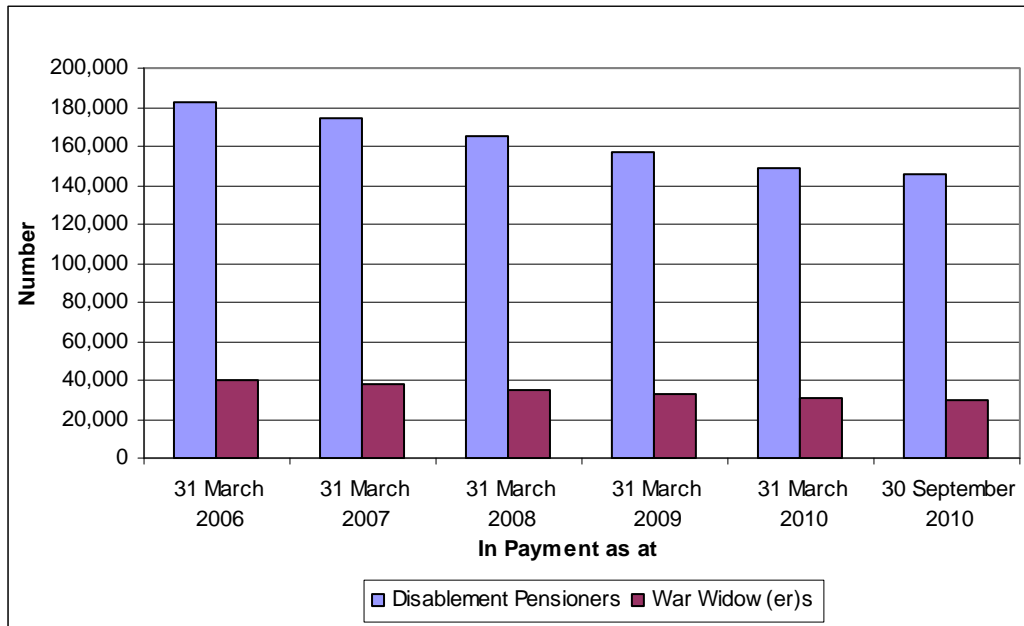
As at 30 September 2010:

- 145,525 War Disablement Pensioners (DPs) were receiving an ongoing pension. This represents a decrease of 7,975 since 30 September 2009.
- 29,645 War Widow(er)s (WWs) were receiving an ongoing pension. This represents a decrease of 2,165 since 30 September 2009.
- Over half of DPs (55%) and around five-sixths of WWs (86%) were aged 70 and over.
- Approximately five out of six (85%) DPs received pensions at the 50% rate or below. The largest group was those at the 20% rate (39% of DPs). 3% received the 100% disablement rate.

- The average weekly amount received by DPs, including pension and supplementary allowances was £76.42. The average weekly amount received by a DP at the 100% disablement rate was £326.48.
- The average weekly amount received by WWs was £218.31. The average weekly WWs pension was £116.62, with the remainder comprising supplementary allowances.

MAIN FINDINGS

Figure 1: War Pensions in payment, 31 March 2006 to 30 September 2010, numbers

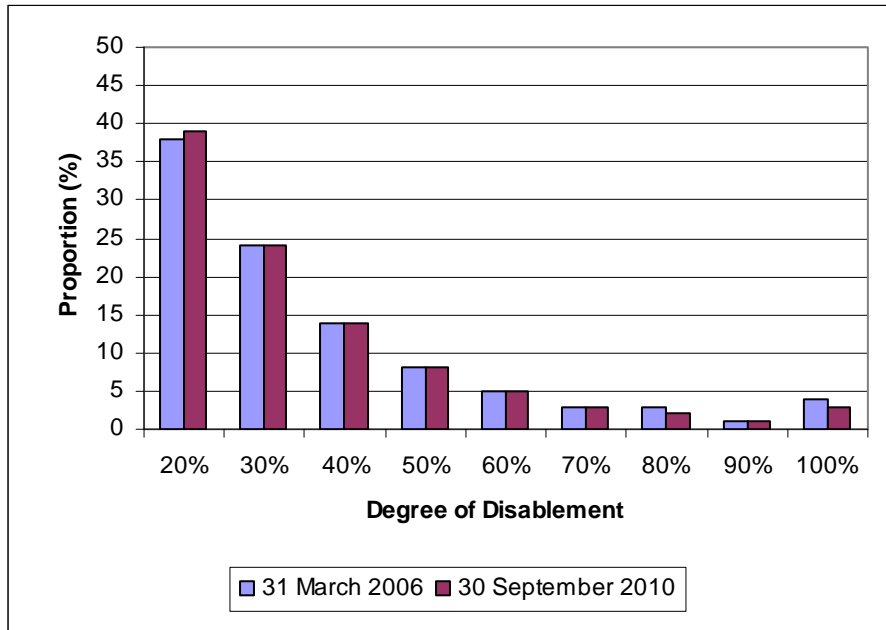


Source Data: Tables 1.1 and 1.2

Figure 1 shows that the number of Disablement Pensioners (DPs) receiving a payment has fallen each year over the past five years, from 182,800 as at 31 March 2006, to 145,525 as at 30 September 2010. Over the same period the number of War Widow(er)s (WWs) fell from 40,125 to 29,645.

This decline is primarily due to the fact that the number of individuals leaving the scheme each year is considerably higher than the number of individuals joining the scheme. The reasons for this are twofold. Firstly, the age profile of current recipients; 55% of DPs and 86% of WWs were aged 70 or over as at 30 September 2010 (see Table 1.6 for age group breakdown). Secondly, compensation claims for injury, illness, or death caused by Service on or after the 6 April 2005 are now processed under the Armed Forces Compensation Scheme (AFCS). As such, the number of claimants joining the WPS is expected to reduce further.

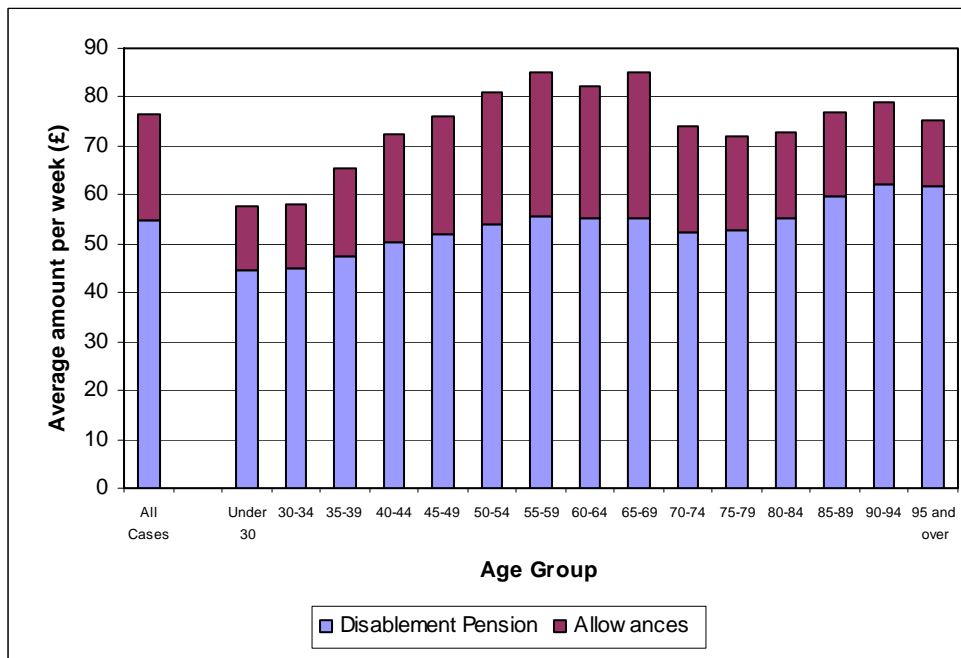
Figure 2: Disablement pensioners at each degree of disablement as at 31 March 2006 and 30 September 2010, percentages



Source Data: Table 1.6

Figure 2 shows that the proportion of DPs at each degree of disablement has remained relatively constant since March 2006, with over 35% receiving pensions for a 20% degree of disablement. As at 30 September 2010, approximately five out of six (84%) DPs received a pension at the 50% degree of disablement or below. Fewer than 4% received a 100% degree of disablement pension.

Figure 3: Disablement pensioners' average weekly pension and allowances as at 30 September 2010, by age group, currency (£)

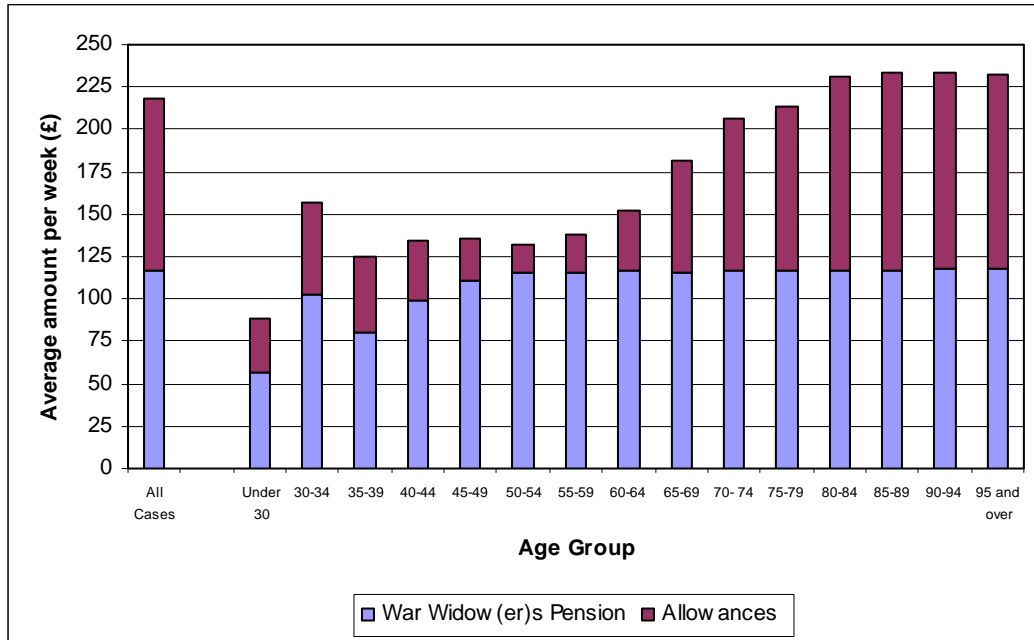


Source Data: Table 1.7

The average weekly amount received by DPs as at 30 September 2010 was £76.42 (**Figure 3**). Of this, £54.83 was from their disablement pension, whilst £21.59 came from supplementary allowances. The average weekly amount received by a DP at the 100% disablement rate was £326.48.

As at 30 September 2010, DPs aged 90-94 received the highest weekly pension of £62.37, whilst DPs aged 65-69 received the highest weekly supplementary allowance of £29.80. Disablement pensions increased with each age group and then leveled off between the age groups 50-54 and 65-69 with an average weekly pension of £55.01. At age group 70-74 there was a drop in weekly pensions before they began to increase again at 80-84. Similarly, supplementary allowances increased with each age group until the age group 55-59, they then began to decrease at age group 70-74 onwards.

Figure 4: War Widow(er)s' average weekly pension and allowances as at 30 September 2010 by age group, currency (£)



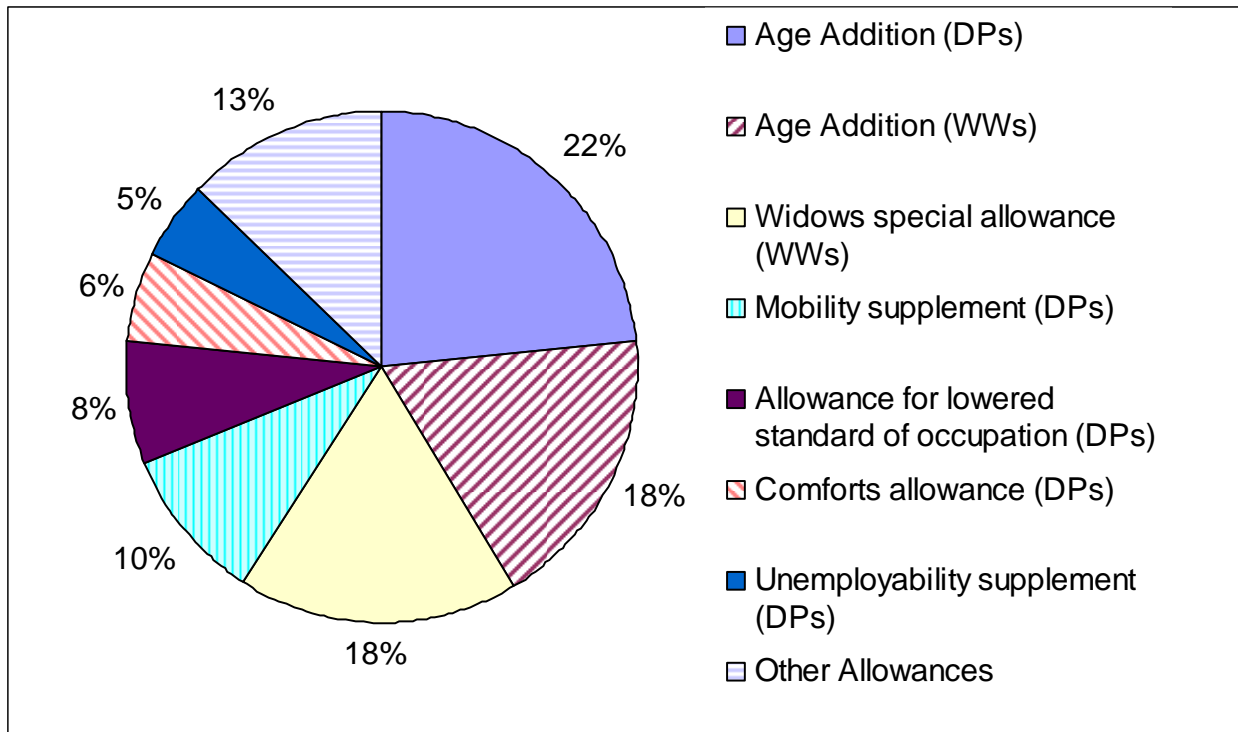
Source Data: Table 1.7

The average weekly amount received by WWs as at 30 September 2010 was £218.31 (**Figure 4**). Of this, £116.62 was from their pension, whilst £101.69 came from supplementary allowances.

As at 30 September 2010 WWs aged 95 and over received the highest average weekly pension amount (£117.51), and WWs aged 90-94 received the highest average weekly supplementary allowances amount (£116.11).

With the exception of higher payments to WWs aged 30-34, WWs pensions increased with each age group and leveled off at age group 50-54 to 95 and over, with an average weekly pension of £116.52. From the age group 30-34, WW average weekly supplementary allowances decrease up until the age group 50-54, before they increase at age group 55-59 onwards.

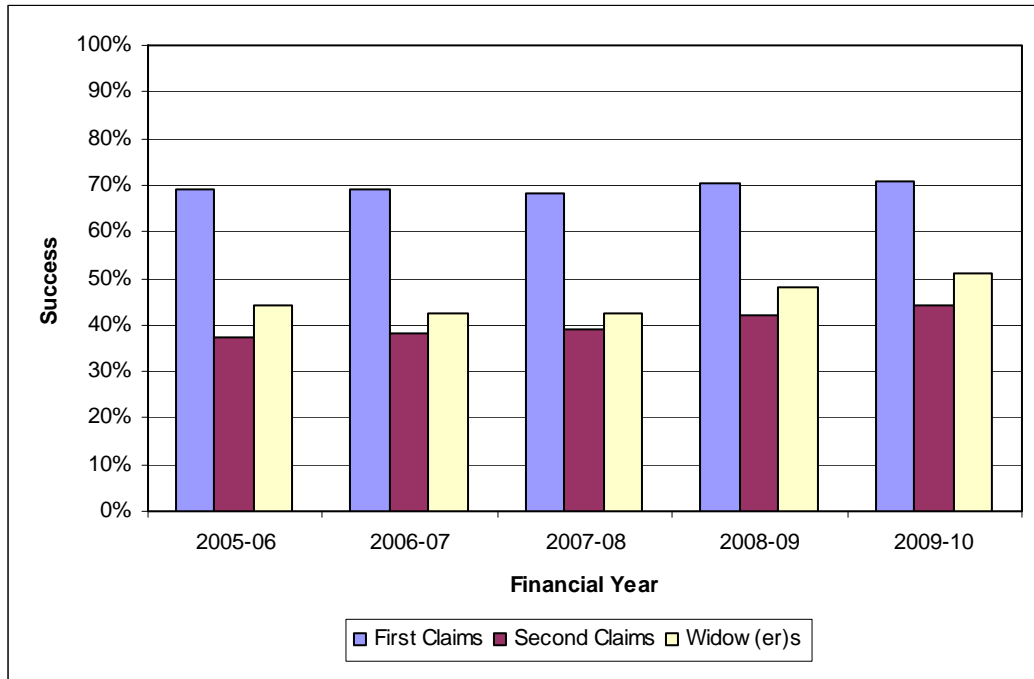
Figure 5: All supplementary allowances in payment as at 30 September 2010, percentages



Source Data: Table 1.8

Figure 5 shows that the most common supplementary allowances in payment as at 30 September 2010 were DPs and WWs Age Additions, accounting for 40% of all allowances in payment. The next most common allowance was Widow(er)s' Special Allowance, accounting for 18% of all allowances in payment. This is a supplementary pension payable to Widow(er)s of Service personnel who died or left the Services before 31 March 1973, as they would not benefit from the improvements made to the MOD's Armed Forces Pension Scheme after that date.

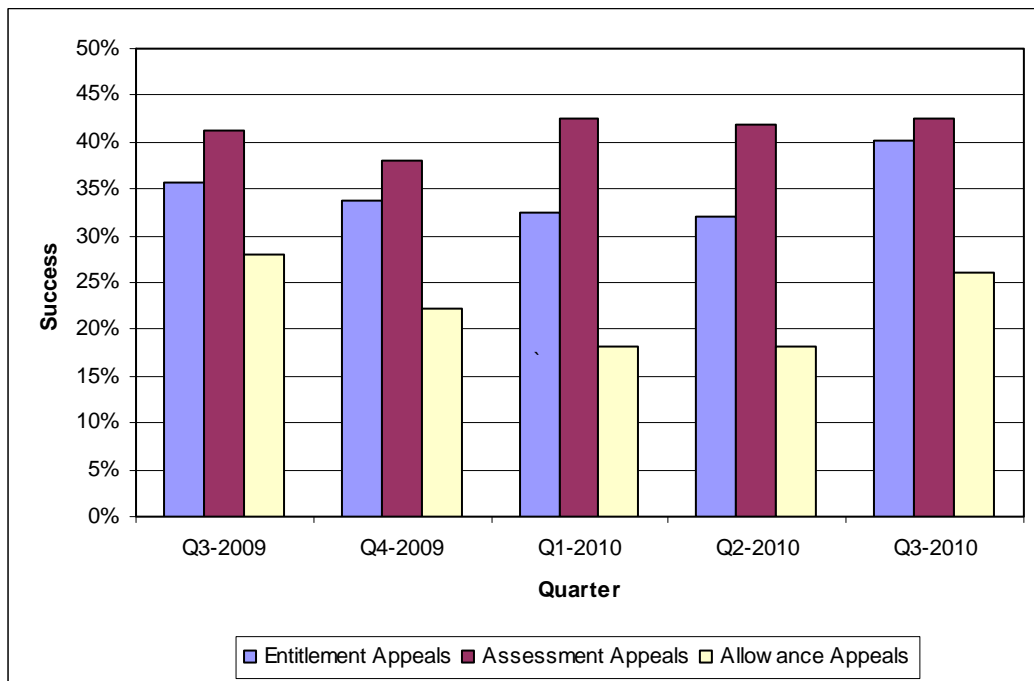
Figure 6: Successful first claims, second claims, and widow(er)s claims by financial year, 2005-06 to 2009-10, percentages



Source Data: Table 2.2

Figure 6 shows that in the financial year 2009-10, over 70% of first claims resulted in an ongoing war pension or gratuity, 45% of second claims resulted in an increased entitlement or new award, and 51% of war widow(er)s' claims resulted in an ongoing widow(er)s' pension.

Figure 7: Successful entitlement appeals, assessment appeals and allowance appeals by quarter, Q3-2009 to Q3-2010, percentages



Source Data: Table 2.6

Figure 7 shows that the success of appeals has varied over the last five quarters. Between Q2-2010 and Q3-2010, the percentage of successful entitlement appeals (including WWs entitlement appeals) rose from 32% to 40%. During the same period, the percentage of assessment appeals resulting in an increased award remained stable at just over 40%, and the number of successful allowance appeals rose from 18% to 26%.

CONVENTIONS

In line with DASA's Rounding Policy to maintain anonymity of claimants, all figures have been rounded to the nearest five (totals may not add due to rounding). Percentages have been rounded to the nearest 1%.

~	Negligible (fewer than 5)
r	Revised
	Break in series
Q1	1 January to 31 March
Q2	1 April to 30 June
Q3	1 July to 30 September
Q4	1 October to 31 December

Section 1: Recipients of War Pensions

Table 1.1: War Pensions in payment by type of pension, principal scheme and quarter, 30 September 2009 to 30 September 2010, numbers	9
Table 1.2: War Pensions in payment by type of pension, gender and financial year end, 31 March 2006 to 31 March 2010, numbers	10
Table 1.3: War Pensions flows by type of pension and financial year, 2004-05 to 2009-10, numbers.....	10
Table 1.4: Disablement Pensions in payment by degree of disablement as at 30 September 2010, numbers.....	11
Table 1.5: Pensioners by type of pension, principal scheme (DPs) and Government Office Region (GOR) as at 30 September 2010, numbers.....	12
Table 1.6: War Pensions in payment by pension type, percentage disablement and age band as at 30 September 2010, numbers	13
Table 1.7: Average weekly amounts of pension entitlement by type, percentage disablement and age band as at 30 September 2010, currency (£).....	14
Table 1.8: Supplementary allowances in payment by type of allowance and quarter, 30 September 2009 to 30 September 2010, numbers	14
Table 1.8a: Supplementary allowances in payment by type of pension, 31 March 2006 to 31 March 2010, numbers and average weekly amount (£).....	15

Table 1.1: War Pensions in payment by type of pension, principal scheme and quarter, 30 September 2009 to 30 September 2010, numbers

	Awards in payment at:				
	30-Sep-09	31-Dec-09	31-Mar-10	30-Jun-10	30-Sep-10
ALL IN PAYMENT	186,115	183,670	180,400	177,960	175,945
Disablement Pensioners	153,500	151,535	148,945	147,065	145,525
in receipt of an ongoing war pension					
1914 war	0	0	0	0	0
Inter-war	35	35	30	30	25
1939 war onwards	150,760	148,890	146,405	144,605	143,130
Civilian	1,480	1,435	1,390	1,365	1,335
Polish	560	540	510	485	470
Mercantile marine	660	635	605	580	560
Not known	0	~	~	0	~
War Widow(er)s	31,810	31,340	30,655	30,110	29,645
War widows pension	31,735	31,265	30,580	30,035	29,570
War widowers pension	75	75	75	75	75
Other Pensioners	805	795	795	785	775
Disablement pensioners (ALSO allowance only)	395	390	390	385	385
War orphans pension	30	25	25	25	25
War parents pension	20	20	20	20	20
Adult dependant pension	10	10	10	5	5
Unmarried dependant pension	~	~	~	~	~
Child allowance only	350	345	350	345	340

Table 1.2: War Pensions in payment by type of pension, gender and financial year end, 31 March 2006 to 31 March 2010, numbers

	Awards in payment at:				
	31-Mar-06	31-Mar-07	31-Mar-08	31-Mar-09	31-Mar-10
ALL IN PAYMENT	223,850	212,535	201,265	190,745	180,400
Men	175,660	166,910	158,455	150,655	142,770
Women	48,190	45,625	42,810	40,090	37,630
Disablement Pensioners	182,800	173,850	165,165	157,125	148,945
Men	174,955	166,225	157,780	150,005	142,135
Women	7,845	7,625	7,385	7,120	6,810
War Widow(er)s	40,125	37,795	35,235	32,790	30,655
Men	60	65	70	70	75
Women	40,065	37,730	35,165	32,715	30,580
Other Pensioners	925	890	865	830	795
Men	645	615	605	580	555
Women	280	270	260	255	240

Table 1.3: War Pensions flows by type of pension and financial year, 2005-06 to 2009-10, numbers

	2005-06	2006-07	2007-08	2008-09	2009-10
ALL IN PAYMENT	223,850	212,535	201,265	190,745	180,400
Total intake in financial year	3,775	3,295	2,940	3,410	2,795
Total outflow in financial year	15,165	14,610	14,205	13,930	13,140
Disablement Pensioners	182,800	173,850	165,165	157,125	148,945
Intake during financial year	2,700	2,380	2,170	2,590	2,070
Outflow during financial year	11,670	11,345	10,835	10,640	10,250
War Widow(er)s	40,125	37,795	35,235	32,790	30,655
Intake during financial year	1,000	895	755	795	715
Outflow during financial year	3,460	3,225	3,315	3,245	2,845
Other Pensioners	925	890	865	830	795
Intake during financial year	75	20	15	25	10
Outflow during financial year	35	40	55	45	45

Table 1.4: Disablement Pensions in payment by degree of disablement as at 30 September 2010, numbers

Degree of disablement (Percentage)								
Men and Women	TOTAL	1914 War	Inter War	1939 War onwards	Civilian	Polish	Mercantile Marine	Not Known
ALL	145,525	0	25	143,130	1,335	470	560	~
20	57,470	0	~	56,880	300	125	165	0
30	34,840	0	10	34,260	295	115	155	~
40	20,425	0	5	20,020	235	75	90	0
50	11,225	0	~	11,005	130	40	50	0
60	7,090	0	0	6,960	75	25	25	0
70	4,270	0	~	4,150	70	25	25	0
80	3,490	0	~	3,400	50	25	15	0
90	1,175	0	~	1,135	25	5	10	0
100	4,740	0	~	4,545	140	30	20	0
Not Known ⁽¹⁾	800	0	0	775	15	5	~	~

Men

ALL	138,820	0	25	137,260	520	450	560	~
20	54,955	0	~	54,565	110	115	165	0
30	33,310	0	10	32,925	110	110	155	~
40	19,465	0	5	19,195	105	70	90	0
50	10,735	0	~	10,595	45	40	50	0
60	6,760	0	0	6,680	30	25	25	0
70	4,045	0	~	3,965	30	25	25	0
80	3,300	0	~	3,240	25	25	15	0
90	1,120	0	~	1,095	5	5	10	0
100	4,460	0	~	4,340	65	30	20	0
Not Known ⁽¹⁾	670	0	0	660	~	~	~	~

Women

ALL	6,705	0	0	5,870	815	20	0	0
20	2,515	0	0	2,315	190	10	0	0
30	1,530	0	0	1,335	190	~	0	0
40	960	0	0	825	130	~	0	0
50	490	0	0	405	85	0	0	0
60	330	0	0	280	45	~	0	0
70	225	0	0	185	40	~	0	0
80	190	0	0	165	30	0	0	0
90	55	0	0	40	15	0	0	0
100	280	0	0	200	75	~	0	0
Not Known ⁽¹⁾	130	0	0	115	15	~	0	0

Note: (1) 'Not known' consists of those entitled to a disablement pension but with no percentage disability recorded. These include clerical overrides and suspended cases

Table 1.5: Pensioners by type of pension, principal scheme (DPs) and Government Office Region (GOR) as at 30 September 2010, numbers

GOR	Disablement Pensioners										Other Pensioners ⁽²⁾
	All Pensioners	All DPs	1914 War	Inter-war	1939 War onwards	Civilian	Polish	Mercantile Marine	Not known	War Widow(er)s	
ALL	175,945	145,525	0	25	143,130	1,335	470	560	~	29,645	775
North East	11,340	10,090	0	0	9,970	50	10	60	0	1,190	60
North West	19,655	16,620	0	~	16,270	190	45	120	0	2,945	85
Yorkshire and the Humber	12,745	10,515	0	~	10,415	50	25	25	0	2,150	75
East Midlands	11,170	9,295	0	~	9,205	45	30	10	~	1,830	45
West Midlands	10,330	8,370	0	0	8,265	65	30	10	0	1,920	40
East of England	12,265	9,645	0	~	9,470	140	20	15	0	2,580	40
London	6,425	4,760	0	~	4,500	190	55	10	0	1,640	25
South East	23,120	18,250	0	5	17,910	255	30	45	0	4,785	90
South West	23,020	19,130	0	~	18,900	160	35	30	~	3,785	110
Wales	9,895	8,320	0	~	8,230	40	10	35	0	1,530	45
Scotland	16,960	14,610	0	0	14,455	55	25	70	0	2,280	75
N. Ireland	4,435	3,745	0	0	3,735	5	0	5	0	670	20
Other UK ⁽¹⁾	515	420	0	0	415	~	0	~	0	90	~
UK Unknown	700	540	0	0	525	10	~	~	0	160	0
Overseas	13,160	11,020	0	~	10,670	80	150	120	~	2,080	60
Not Known	210	195	0	0	190	~	~	0	0	15	~

Note: (1) 'Other UK' includes Isle of Man and Channel Islands

(2) 'Other Pensioners' includes war orphans, war parents, adult dependant, unmarried dependants, juvenile dependant, child allowance only, and allowance for lowered standard of occupation only pensioners.

Table 1.6: War Pensions in payment by pension type, percentage disablement (DPs) and age band as at 30 September 2010, numbers

AGE GROUP	All Pensioners	Disablement Pensioners										Not Known ⁽¹⁾	War Widow(er)s	Other Pensioners ⁽²⁾
		All DPs	20%	30%	40%	50%	60%	70%	80%	90%	100%			
ALL	175,945	145,525	57,470	34,840	20,425	11,225	7,090	4,270	3,490	1,175	4,740	800	29,645	775
Under 30	1,045	925	475	220	90	40	30	10	5	~	15	35	20	100
30 to 34	1,820	1,775	890	415	215	90	55	20	25	~	20	45	35	5
35 to 39	5,315	5,145	2,395	1,250	665	325	190	105	55	10	85	65	110	55
40 to 44	8,415	8,150	3,515	1,970	1,175	545	350	180	135	25	165	85	225	40
45 to 49	9,935	9,570	4,040	2,310	1,265	705	435	240	160	55	275	85	305	60
50 to 54	10,365	9,795	3,865	2,350	1,440	775	485	265	210	60	305	40	490	80
55 to 59	9,020	8,365	3,135	2,030	1,250	670	460	255	210	45	275	30	575	75
60 to 64	11,700	10,635	4,240	2,500	1,460	815	525	340	260	95	355	40	975	90
65 to 69	12,200	10,715	4,400	2,375	1,455	860	540	325	270	90	360	35	1,390	100
70 to 74	17,690	15,515	6,870	3,715	1,930	1,035	640	385	345	95	450	45	2,100	80
75 to 79	19,570	16,420	7,015	4,115	2,155	1,130	625	420	355	115	445	45	3,115	35
80 to 84	19,980	14,875	5,835	3,575	2,130	1,180	735	440	355	110	470	50	5,085	20
85 to 89	30,135	22,090	7,295	5,355	3,395	1,920	1,295	820	685	285	930	120	8,030	10
90 to 94	15,835	10,230	3,100	2,365	1,590	1,015	645	405	370	150	525	60	5,590	15
95 +	2,920	1,310	405	295	205	120	85	60	50	20	55	20	1,605	~

Notes: (1) 'Not known' consists of those entitled to a disablement pension but with no percentage disability recorded. These include clerical overrides and suspended cases

(2) 'Other Pensioners' includes War Orphans, War Parents, Adult Dependant, Unmarried Dependant, Juvenile Dependant, Child Allowance only and Allowance for Lowered Standard of Occupation only Pensioners

Table 1.7: Average weekly amounts of pension entitlement by type, percentage disablement (DPs) and age band as at 30 September 2010, currency

(All figures are in £s)

AGE GROUP	Disablement Pension										War Widow(er)s
	All DPs	20%	30%	40%	50%	60%	70%	80%	90%	100%	
PENSION & ALLOWANCES											
All Cases	76.42	32.21	50.03	86.75	112.67	150.16	176.08	222.64	244.01	326.48	218.31
Under 30	57.53	31.13	46.10	84.06	107.46	159.61	170.76	250.68	230.61	399.42	88.92
30 to 34	58.15	30.85	46.07	87.30	111.92	167.78	166.71	204.61	136.89	353.19	156.49
35 to 39	65.45	31.66	47.54	93.04	118.82	157.31	214.03	237.58	273.59	340.76	124.47
40 to 44	72.53	32.10	49.46	91.84	120.22	171.53	201.43	256.22	285.44	371.46	134.67
45 to 49	76.03	32.60	50.31	89.62	124.14	169.78	199.55	251.77	284.98	339.53	135.13
50 to 54	81.06	33.21	52.00	92.57	127.03	167.90	198.84	252.21	269.89	342.41	132.12
55 to 59	84.90	33.68	53.05	92.02	127.89	170.98	203.28	251.95	272.48	351.36	137.59
60 to 64	82.13	32.97	51.80	89.74	120.76	170.39	197.97	244.54	273.53	348.83	152.59
65 to 69	84.97	32.74	52.44	95.58	126.41	174.58	200.90	270.00	291.22	367.22	181.37
70 to 74	74.23	32.19	51.25	89.91	115.42	159.09	192.52	240.90	266.24	351.35	205.80
75 to 79	71.86	32.03	50.19	87.91	111.29	149.90	175.59	232.23	260.47	336.29	213.81
80 to 84	72.94	31.70	48.94	83.08	106.41	135.98	158.48	206.30	235.00	320.39	231.53
85 to 89	76.75	31.41	48.13	78.27	97.67	124.76	145.45	187.60	212.66	297.52	233.24
90 to 94	78.90	31.58	47.81	76.82	96.20	119.71	143.51	174.81	194.87	270.18	233.58
95 +	75.46	31.62	47.42	76.80	95.74	113.02	136.90	159.91	216.10	249.54	232.55
PENSION ONLY											
All Cases	54.83	30.87	46.27	61.45	76.77	92.11	107.78	123.19	138.56	153.02	116.62
Under 30	44.44	30.63	46.09	56.35	71.54	89.91	101.65	123.76	139.23	142.70	56.28
30 to 34	45.20	30.63	45.75	59.39	72.66	84.54	100.59	118.12	105.83	141.57	102.48
35 to 39	47.45	30.60	45.67	59.01	73.61	88.98	104.88	118.76	130.18	139.42	80.76
40 to 44	50.20	30.74	45.90	60.16	74.60	88.63	105.09	120.32	131.80	150.03	99.40
45 to 49	52.08	30.80	46.07	60.76	75.72	90.73	107.47	121.18	137.92	146.18	111.33
50 to 54	54.05	30.88	46.20	61.11	76.21	91.51	107.33	121.97	134.53	148.80	115.14
55 to 59	55.61	30.84	46.24	61.54	76.71	92.13	108.11	123.41	138.64	152.14	115.55
60 to 64	55.24	30.91	46.33	61.61	76.94	92.63	107.55	123.62	139.06	153.73	116.30
65 to 69	55.17	30.93	46.34	61.84	77.17	92.40	107.99	123.56	139.16	154.52	115.91
70 to 74	52.43	30.92	46.39	61.80	77.29	92.79	108.14	123.59	139.18	154.60	116.23
75 to 79	52.57	30.91	46.38	61.85	77.31	92.73	108.18	123.72	139.23	154.45	116.92
80 to 84	55.08	30.91	46.38	61.85	77.30	92.78	108.19	123.75	139.23	154.67	116.90
85 to 89	59.59	30.92	46.38	61.86	77.33	92.80	108.27	123.74	139.22	154.69	117.30
90 to 94	62.37	30.93	46.39	61.86	77.32	92.79	108.26	123.64	139.23	154.69	117.47
95 +	61.71	30.94	46.40	61.84	77.34	92.82	108.25	123.76	139.23	154.66	117.51
ALLOWANCES ONLY (including Widows special allowance)											
All Cases	21.59	1.33	3.76	25.30	35.90	58.05	68.31	99.44	105.46	173.45	101.69
Under 30	13.09	0.50	0.02	27.71	35.92	69.70	69.12	126.92	91.38	256.71	32.64
30 to 34	12.95	0.22	0.31	27.91	39.26	83.24	66.12	86.48	31.07	211.61	54.01
35 to 39	17.99	1.06	1.87	34.03	45.20	68.33	109.15	118.82	143.41	201.34	43.71
40 to 44	22.33	1.36	3.56	31.67	45.62	82.90	96.34	135.89	153.64	221.43	35.28
45 to 49	23.95	1.80	4.24	28.86	48.42	79.05	92.08	130.60	147.06	193.35	23.80
50 to 54	27.02	2.33	5.80	31.46	50.81	76.39	91.51	130.24	135.36	193.61	16.98
55 to 59	29.29	2.84	6.80	30.48	51.18	78.85	95.17	128.55	133.84	199.22	22.04
60 to 64	26.89	2.06	5.47	28.13	43.82	77.75	90.43	120.92	134.47	195.10	36.29
65 to 69	29.80	1.81	6.11	33.73	49.24	82.18	92.91	146.45	152.07	212.70	65.46
70 to 74	21.80	1.27	4.86	28.11	38.14	66.29	84.38	117.31	127.05	196.75	89.57
75 to 79	19.30	1.11	3.81	26.06	33.98	57.17	67.41	108.50	121.24	181.84	96.89
80 to 84	17.86	0.79	2.56	21.23	29.11	43.21	50.30	82.55	95.77	165.72	114.64
85 to 89	17.16	0.49	1.75	16.42	20.34	31.97	37.19	63.86	73.44	142.82	115.95
90 to 94	16.53	0.65	1.42	14.96	18.88	26.92	35.25	51.17	55.64	115.49	116.11
95 +	13.74	0.69	1.01	14.95	18.39	20.20	28.65	36.15	76.87	94.88	115.05

Table 1.8: Supplementary allowances in payment by type of allowance and quarter, 30 September 2009 to 30 September 2010, numbers

Allowance type	Awards in payment at:				
	30-Sep-09	31-Dec-09	31-Mar-10	30-Jun-10	30-Sep-10
ALL ALLOWANCES	154,585	152,560	149,470	147,640	145,690
Age 80 addition (NI) (Disablement & Widow(er))	1,335	1,310	1,260	1,240	1,210
Age addition - Disablement	36,765	36,055	35,130	34,490	33,935
Age addition – Widows	28,425	27,970	27,280	26,890	26,480
Allowance for lowered standard of occupation	11,535	11,525	11,465	11,435	11,415
Clothing allowance	3,685	3,630	3,565	3,510	3,470
Comforts allowance	8,510	8,425	8,305	8,260	8,200
Constant attendance allowance	2,895	2,860	2,820	2,790	2,760
Exceptionally severe disablement allowance	600	600	605	605	600
Severe disablement occupational allowance	5	5	5	5	5
Invalidity allowance	6,455	6,420	6,345	6,330	6,320
Mobility supplement	14,585	14,485	14,285	14,175	14,170
Unemployability supplement	7,580	7,510	7,410	7,375	7,340
Modified unemployability supplement	30	30	30	30	30
Additional allowance spouse	1,505	1,470	1,430	1,415	1,395
Modified allowance for spouse	185	185	175	170	170
Additional allowance dependant	~	~	~	~	~
Additional allowance child	1,120	1,185	1,215	1,250	1,120
Child allowance	730	755	760	775	660
Over age infirm child allowance	285	285	280	275	270
Modified over age infirm child allowance	10	10	10	10	10
Temporary allowance Widow(er)	135	160	190	155	125
Widow(er)s rent allowance	410	410	355	355	350
Widow(er)s special allowance	27,795	27,280	26,540	26,100	25,645

Table 1.8a: Supplementary allowances in payment by type of pension, 31 March 2006 to 31 March 2010, numbers and average weekly amount (£)

	Awards in payment at:				
	31-Mar-06	31-Mar-07	31-Mar-08	31-Mar-09	31-Mar-10
ALL ALLOWANCES	191,145	180,475	169,470	158,815	149,470
Average Weekly Allowances Entitlement (in £s)					
Disablement Pensioners	17.08	18.05	18.93	19.86	20.31
War Widow(er)s	86.66	90.32	92.9	97.04	100.95

Section 2: Number of claims, awards and appeals

Table 2.1: Claims registered during quarter, Q3-2009 to Q3-2010, numbers.....	17
Table 2.1a: Claims registered during quarter by claim type, Q3-2009 to Q3-2010, numbers.....	18
Table 2.2: Claim outcomes by financial year, 2005-06 to 2009-10, numbers and percentages.....	19
Table 2.2a: Claim outcomes by quarter, Q3-2009 to Q3-2010, numbers	20
Table 2.3: Successful gratuity & nil percentage awards cleared during financial year, 2005-06 to 2009-10, numbers.....	20
Table 2.4: First claims to supplementary allowances cleared during quarter, by allowance type and outcome, Q3-2009 to Q3-2010, numbers.....	22
Table 2.4a: First claims to supplementary allowances automatically awarded during quarter, by allowance type, Q3-2009 to Q3-2010, numbers.....	23
Table 2.5: Appeals cleared to Pensions Appeal Tribunal for consideration during quarter, by appeal type, Q3-2009 to Q3-2010, numbers.....	23
Table 2.6: Pensions Appeal Tribunal decisions during quarter by appeal type, Q3-2009 to Q3-2010, numbers and percentages	24

Table 2.1: Claims registered during quarter, Q3-2009 to Q3-2010, numbers

Claim type	Claims registered during:				
	Q3-2009	Q4-2009	Q1-2010	Q2-2010	Q3-2010
All Claims	7,320	6,610	7,205	6,525	6,940
Disablement claims	3,610	3,215	3,145	3,135	3,355
War Widow(er)s claims	310	305	345	285	290
Supplementary allowance claims	1,105	1,140	1,205	1,055	1,165
Supplementary allowance reviews	755	635	955	640	620
Medical expenses	885	760	890	845	980
Appeals	665	550	670	565	530

Table 2.1a: Claims registered during quarter by claim type, Q3-2009 to Q3-2010, numbers

Claim type	Claims registered during:				
	Q3-2009	Q4-2009	Q1-2010	Q2-2010	Q3-2010
Disablement claims	3,610	3,215	3,145	3,135	3,355
Current invaliding	135	130	160	140	180
First claim to pension	1,330	1,245	1,150	1,135	1,335
Further condition	850	750	785	795	825
Deterioration	935	805	815	880	835
Departmental review	20	25	25	20	30
Conditional list review	340	260	210	165	155
War Widow(er)s claims	310	305	345	285	290
Widow(er)s	280	295	320	265	265
Restored Widow(er)s	25	10	20	20	20
Review Widow(er)s	~	~	~	~	~
Supplementary allowance claims	1,105	1,140	1,205	1,055	1,165
Allowance for lowered standard of occupation	125	115	115	110	150
Clothing allowance	30	35	40	30	40
Constant attendance allowance	105	90	90	85	100
Mobility supplement	240	230	230	220	280
Unemployability supplement	55	65	75	70	80
Additional allowance spouse	20	25	30	25	15
Additional allowance dependant	~	~	0	~	~
Additional allowance child	25	20	20	35	25
Child allowance only	~	~	5	~	~
Widow(er)s child allowances	0	0	0	0	0
Widow(er)s rent allowance	55	70	80	50	55
Temporary allowance Widow(er)	70	115	100	80	65
Funeral expenses	375	375	420	345	350
Supplementary allowance reviews⁽¹⁾	755	635	955	640	620
Allowance for lowered standard of occupation	360	340	385	330	320
Constant attendance allowance	25	20	25	25	20
Mobility supplement	35	40	45	25	25
Unemployability supplement	95	115	120	90	80
Additional allowance spouse	65	40	330	35	25
Additional allowance dependant	~	~	~	~	~
Child allowance ⁽²⁾	175	80	45	130	145
Appeals	665	550	670	565	530
Entitlement - Disablement	215	170	205	170	150
Entitlement - Widow(er)s	40	35	20	25	30
Assessment	310	270	360	295	265
Supplementary Allowances	65	50	55	60	65
Miscellaneous	35	25	20	20	20

Table 2.1a: Claims registered during quarter by claim type, Q3-2009 to Q3-2010, numbers (Continued)

Claim type	Claims registered during:				
	Q3-2009	Q4-2009	Q1-2010	Q2-2010	Q3-2010
Medical expenses⁽³⁾	885	760	890	845	980
Appliance	5	~	5	5	10
Chiropody	~	~	~	~	~
Convalescence	20	25	20	10	20
Dental	20	25	20	20	25
Hearing aid	5	10	10	5	10
Home nursing equipment	~	10	15	10	10
Hospital travel expenses	55	80	60	55	50
House adaptation grant	35	35	25	20	35
Prescription	10	5	10	15	10
Priority treatment	120	80	90	100	85
Private treatment	15	10	10	~	10
Provision of treatment	260	185	275	305	405
Remedial treatment	275	220	285	230	245
Skilled nursing care	~	0	~	~	~
Spectacles	20	20	30	20	20
Treatment allowance (inc. loss of earnings)	35	55	30	30	35

Notes: (1) Reviews of allowances which involve rates of pay are traditionally held in the first quarter of the year.

(2) Contains widow(er)s' child allowance and child allowance only reviews.

(3) Excludes NI and Eire.

Table 2.2: Claim outcomes by financial year, 2005-06 to 2009-10, numbers and percentages

Claim Type	Financial Year:									
	2005-06		2006-07		2007-08		2008-09		2009-10	
	Number	%	Number	%	Number	%	Number	%	Number	%
All First Claims	7,515		6,765		5,750		7,125		5,800	
Awarded 20–100%	1,740	23%	1,525	23%	1,370	24%	1,605	23%	1,200	21%
Awarded 1-19%	3,465	46%	3,155	47%	2,555	44%	3,410	48%	2,915	50%
Awarded 0%	1,495	20%	1,370	20%	1,185	21%	1,235	17%	1,010	17%
Rejections	815	11%	715	11%	645	11%	875	12%	680	12%
All Second/Subsequent Claims	9,375		8,480		7,365		8,560		7,165	
Awarded 20–100%	50	<1%	45	<1%	40	<1%	70	<1%	55	<1%
Awarded 1-19%	60	<1%	50	<1%	30	<1%	65	<1%	50	<1%
Awarded 0%	55	<1%	40	<1%	45	<1%	35	<1%	30	<1%
Increased assessments	3,400	36%	3,160	37%	2,795	38%	3,470	41%	3,060	43%
Maintained assessments	4,960	53%	4,395	52%	3,830	52%	4,415	52%	3,570	50%
Reduced assessments	340	4%	320	4%	215	3%	110	1%	60	1%
Rejections	510	5%	475	6%	400	5%	395	5%	340	5%
All Widow(er)s Claims⁽¹⁾	2,040		1,930		1,560		1,595		1,285	
Awards	905	44%	825	43%	665	43%	770	48%	655	51%
Rejections	1,135	56%	1,105	57%	895	57%	830	52%	630	49%

Notes : (1) Includes restored Widows; Since 2005/06 figures do not include Widow(er)s' reviews.

Table 2.2a: Claim outcomes by quarter, Q3-2009 to Q3-2010, numbers

Claim type	Claims cleared during:					
	Q3-2009	Q4-2009	Q1-2010	Q2-2010	Q3-2010	
First claims						
Current Invaliding	All	95	110	140	130	150
	Awarded 20-100%	30	35	60	55	55
	Awarded 1-19%	25	25	25	30	35
	Awarded 0%	~	5	~	~	~
	Rejected	40	40	45	40	60
First Claim to Pension	All	1,350	1,345	1,280	960	1,065
	Awarded 20-100%	275	250	230	185	215
	Awarded 1-19%	675	725	730	500	560
	Awarded 0%	275	250	205	175	200
	Rejected	125	115	115	105	90
Second/Subsequent claims						
Further Condition	All	780	850	725	715	660
	Awarded 20-100%	10	~	5	~	~
	Awarded 1-19%	10	10	10	10	15
	Awarded 0%	15	5	~	5	10
	Increased	375	430	380	340	320
	Maintained	285	300	270	275	245
	Reduced	5	5	~	5	5
	Rejected	75	90	55	75	60
Conditional List Review	All	300	315	225	140	150
	Awarded 20-100%	~	~	~	~	~
	Awarded 1-19%	0	~	0	0	~
	Awarded 0%	0	0	0	0	0
	Increased	25	30	30	15	15
	Maintained	265	270	190	120	130
	Reduced	5	10	5	~	~
	Rejected	0	~	0	~	0
Deterioration Claim	All	690	740	655	635	605
	Awarded 20-100%	5	~	5	~	0
	Awarded 1-19%	~	0	~	0	0
	Awarded 0%	0	0	0	0	~
	Increased	350	370	335	335	335
	Maintained	330	360	300	290	265
	Reduced	0	~	~	~	~
	Rejected	~	5	5	5	0
Departmental Review	All	15	25	25	10	25
	Awarded 20-100%	0	~	~	0	~
	Awarded 1-19%	0	~	~	0	0
	Awarded 0%	0	0	~	~	~
	Increased	~	10	5	~	5
	Maintained	10	10	15	~	15
	Reduced	~	~	~	0	~
	Rejected	~	~	~	~	~
Widow(er)s Claims⁽¹⁾						
	All	340	285	310	270	290
	Awards	155	165	180	155	155
	Rejections	185	120	135	115	135

Note: (1) Figures include restored Widows; Figures do not include widow(er)s' reviews.

Table 2.3: Successful gratuity & nil percentage awards cleared during financial year, 2005-06 to 2009-10, numbers

	Financial Year:				
	2005-06	2006-07	2007-08	2008-09	2009-10
All Nil and Gratuity Awards	5,115	4,640	3,840	4,765	4,015
Nil awards	1,585	1,440	1,255	1,290	1,050
Gratuity awards					
1 - 5%	1,370	1,230	960	1,205	1,120
6 - 14%	1,880	1,725	1,365	1,935	1,610
15 - 19%	275	245	265	335	235

Table 2.4: First claims to supplementary allowances cleared during quarter, by allowance type and outcome, Q3-2009 to Q3-2010, numbers ⁽¹⁾

Allowance type		First awards made during:				
		Q3-2009	Q4-2009	Q1-2010	Q2-2010	Q3-2010
Allowance for lowered standard of occupation	All	140	95	110	110	135
	Awarded	100	65	70	70	75
	Rejected	40	30	40	40	60
Clothing allowance	All	35	30	40	25	35
	Awarded	20	15	20	10	20
	Rejected	20	15	20	15	20
Constant attendance allowance	All	115	90	90	90	80
	Awarded	70	55	55	50	40
	Rejected	50	35	35	40	35
Exceptionally severe disablement allowance	All	20	15	20	15	10
	Awarded	20	15	20	15	10
	Rejected	0	0	0	0	0
Severe disablement occupational allowance	All	0	0	0	~	0
	Awarded	0	0	0	~	0
	Rejected	0	0	0	0	0
Mobility supplement	All	240	215	240	210	260
	Awarded	145	120	145	105	165
	Rejected	95	95	90	100	90
Unemployability supplement	All	50	45	65	50	70
	Awarded	40	35	45	45	50
	Rejected	10	10	20	10	20
Additional allowance spouse	All	20	20	30	25	15
	Awarded	5	10	15	10	5
	Rejected	15	10	20	15	5
Additional allowance dependant	All	~	~	0	~	~
	Awarded	~	0	0	~	~
	Rejected	0	~	0	0	0
Additional allowance child	All	25	15	15	20	10
	Awarded	25	10	15	20	10
	Rejected	~	5	~	0	~
Child allowance only	All	~	~	5	~	~
	Awarded	~	~	~	~	~
	Rejected	0	~	~	~	0
Widow(er)s child allowances	All	~	~	0	5	~
	Awarded	~	~	0	5	~
	Rejected	0	0	0	0	0
Widow(er)s rent allowance	All	15	5	5	10	5
	Awarded	15	5	5	10	5
	Rejected	0	0	0	0	0
Temporary allowance Widow(er)	All	70	110	100	70	65
	Awarded	70	110	100	70	65
	Rejected	~	~	0	~	0
Funeral expenses	All	380	345	370	330	345
	Awarded	180	190	195	160	165
	Rejected	205	155	175	170	180

Note: (1) Awards processed in the quarter. Entitlement may be backdated to a previous quarter.

Table 2.4a: First claims to supplementary allowances automatically awarded during quarter, by allowance type⁽¹⁾, Q3-2009 to Q3-2010, numbers

Allowance type	First awards made during:				
	Q3-2009	Q4-2009	Q1-2010	Q2-2010	Q3-2010
Age – 80 addition (NI) (Disablement & Widow(er))	15	15	10	10	10
Age – disablement	215	210	195	250	225
Age – Widow(er)s	155	145	120	150	135
Comforts allowance	10	10	15	15	10
Invalidity allowance	10	10	5	10	10

Note: (1) Awards processed in the quarter. Entitlement may be backdated to a previous quarter.

Table 2.5: Appeals cleared to Pensions Appeal Tribunal for consideration during quarter, by appeal type, Q3-2009 to Q3-2010, numbers

Appeals cleared	Appeals cleared during:				
	Q3-2009	Q4-2009	Q1-2010	Q2-2010	Q3-2010
All Appeals Cleared	835	695	645	635	520
Entitlement - Disablement	275	220	210	195	155
Entitlement - Widow(er)s	30	40	25	20	25
Assessment	440	325	330	345	275
Supplementary Allowances	55	75	55	50	50
Temporary Allowances	0	0	0	0	0
Miscellaneous	30	35	25	20	15

Table 2.6: Pensions Appeal Tribunal decisions during quarter by appeal type, Q3-2009 to Q3-2010, numbers and percentages

	Decisions made during:									
	Q3-2009		Q4-2009		Q1-2010		Q2-2010		Q3-2010	
		%		%		%		%		%
Entitlement Appeals	190		200		140		160		165	
<u>Disablement</u>										
All	165		170		120		135		150	
Allowed	65	40%	60	35%	45	37%	45	35%	65	43%
Disallowed	100	60%	110	65%	75	63%	85	65%	85	57%
<u>Widow(er)s</u>										
All	25		25		25		25		15	
Allowed	~	8%	5	22%	~	8%	~	15%	~	12%
Disallowed	20	92%	20	78%	20	92%	20	85%	15	88%
<u>Overall</u>										
Allowed	65	36%	65	34%	45	32%	50	32%	65	40%
Disallowed	120	64%	130	66%	95	68%	110	68%	100	60%
Assessment Appeals	270		265		225		190		240	
Increased	110	41%	100	38%	95	42%	80	42%	100	43%
Upheld	160	58%	160	62%	130	57%	110	58%	135	57%
Reduced	~	<1%	~	<1%	~	<1%	~	<1%	~	<1%
Allowance Appeals	50		25		35		35		25	
Allowed	15	28%	5	22%	5	18%	5	18%	5	26%
Disallowed	35	72%	20	78%	25	82%	25	82%	15	74%

Glossary of pensions and allowances

Age Allowance

This may be paid to a war disablement pensioner (man or woman) who is aged 65 or over and whose disablement is assessed at 40% or more.

Allowance for Lowered Standard of Occupation (ALSO)

This may be paid if a pensioner's earning capacity is reduced because their pensioned disablement permanently prevents them following their regular occupation. To gain entitlement new claimants must be under age 65, with a service disablement of at least 40% when they make their claim. This allowance plus their basic War Disablement Pension cannot exceed the 100% disablement pension rate.

Child Allowance Only

There is a Child Allowance Only Pension in payment, i.e. no award has been given to War Widow(er)s Pension but her child has been awarded.

Clothing Allowance (CLOT)

This may be paid if the disablement causes exceptional wear and tear on clothing.

Comforts Allowance (COMF)

This may be paid to a severely disabled pensioner who is receiving Constant Attendance Allowance or Unemployability Supplement or both. It is intended to help with the extra expenses associated with severe disablement.

Constant Attendance Allowance (CAA)

This may be paid to a pensioner who needs regular personal attention because of their pensioned disablement and that disablement is assessed at 80% or more. It is payable at one of four rates. The rate varies according to the level of attendance they need.

Disablement Pension (DP)

This is paid at a rate which varies according to the degree of disablement. The degree of disablement is assessed on a percentage basis by the War Pension Agency medical advisors.

Elderly Widow(er)'s Age Allowance

A war widow(er) may receive an additional allowance at age 65 which is increased at age 70 and again at age 80.

Exceptionally Severe Disablement Allowance (ESDA)

This may be paid to a pensioner who is receiving Constant Attendance Allowance at one of the two highest rates, or would be receiving it if they were not in hospital.

Funeral Expenses (FE)

Funeral expenses may be paid if the pensioner died as a result of his service disablement, or died while having treatment for that disablement in hospital, or was entitled to Constant Attendance Allowance, or was at the time of his death 80% or more disabled and receiving Unemployability Supplement.

Invalidity Allowance (IVA)

This may be paid to a pensioner receiving Unemployability Supplement. The rate varies according to the age at which unemployability began.

Modified Over Age Infirm Allowance (MOIA)

Compensation/Allowances (including that paid to children living in the Irish Republic or Overseas) due to infirmity are taken into account when calculating an award of OAIA and adjustments are made if necessary. (See OAIA below)

Modified Unemployability Supplement (MSUP)

The basic conditions of eligibility to UNSUPP for a pensioner living abroad (including the Irish Republic and the Channel Islands) are the same as for the UK, however, if they become eligible for Retirement Pension or other benefit payable out of the public funds of that country then UNSUPP may be adjusted with that benefit, or paid at a nominal rate to allow continued payment of comforts allowance.

Orphan's Pension

This may be payable to a child who has lost both parents.

Over Age Infirm Allowance (OAIA)

Over Age Infirm Allowance for children of deceased pensioners unable to support themselves dates back to the 1914 War. The allowance can be awarded or continued beyond the normal age limits on the grounds of infirmity if the ailment is of a nature which is likely to prevent the person from earning a living either permanently or for a prolonged period and infirmity commenced before age 16. The person is still referred to as a child even though they may be quite elderly.

Rent Allowance (RENT)

A war widow(er) with a child or children may be eligible for a rent allowance.

Severe Disablement Occupational Allowance (SDOA)

This may be paid to a pensioner who is entitled to Constant Attendance Allowance at one of the two highest rates, but who still normally has a gainful occupation.

Temporary Allowance for Widow(er)s (TAW)

This may be paid to a widow(er), irrespective of the cause of their spouse's death, if he/she were awarded Unemployability Supplement or Constant Attendance Allowance or both. The allowance is approximately equal to the disablement pension and allowances paid to their late spouse. It is paid for the first 26 weeks of widowhood.

Treatment Allowance (TA)

This is equivalent to a disablement pension paid at the 100% rate. It may be paid instead of a disablement pension to a pensioner who incurs a loss of earnings as a result of receiving treatment for their pensioned disablement.

Unemployability Supplement (UNSUPP)

This may be paid to a pensioner who is unemployable or virtually unemployable as a result of the war pensioned disablement. To gain entitlement, new claimants must be under age 65, with a pensioned disablement assessed at 60% or more when they make their claim. Additional allowances may be paid for a spouse and a child or children.

War Pensioner's Mobility Supplement (WPMS)

This is intended to help with the mobility costs of a pensioner who is unable to walk, or virtually unable to walk. New claimants must have a service disablement of at least 40%. It is paid to double amputees and to those pensioners who need help getting about because they are both deaf and blind as a result of their pensioned disablement.

War Widow(er)'s Pension (WWP)

The standard rate of pension may be paid if the widow(er) has a dependant child, or is over 40, or is incapable of self-support.

The lower rate is paid to childless widow(er)s under the age of 40. If the spouse was receiving Constant Attendance Allowance, or at the time of his/her death was 80% or more disabled and receiving Unemployability Supplement, a War Widow(er)s Pension is awarded automatically irrespective of the cause of death.

War Widow(er)'s Special Allowance

This is a Supplementary Pension payable to "pre-1973 war widow(er)s" (the widow(er)s of Service personnel who died or left the services before 31st March 1973, and who did not benefit from the improvements made from that date to the MOD's Armed Forces Pension Scheme).

Glossary of terms and conventions

Adult Dependant

Adult relatives, i.e. sister, brother, aunt or uncle etc, for whom the service person was financially responsible.

Appeal

An appeal provides a person with an impartial re-examination of the decision under appeal.

Cleared

Where the work by the Service Personnel and Veterans Agency (SPVA) on a specific task has been fully completed.

Conditional List Review

Conditional List Review cases arise because SPVA Medical Services have previously made an interim assessment for a limited period because the level of disablement was likely to change. A review date is calculated so that disablement can be reassessed before the given period expires.

Current Invaliding

Personnel invalided from the Forces and their case referred direct to the SPVA by Ministry of Defence for War Pensions consideration.

Eligible War Pension Claimant

A claimant is eligible for consideration under the WPS where disablement or death has occurred as a result of Service in HM Forces, prior to 6 April 2005. In addition, awards may also be made where disablement or death has occurred as a result of:

- War-time Service in the Naval Auxiliary Service, or the Mercantile Marine
- Service in the Polish Forces under British command during World War Two

Pensions, allowances or other payments may also be awarded where the disablement or death of a civilian or a member of a civil defence organisation is the direct result of an injury sustained as a result of enemy action in World War Two.

Gratuity

A single payment where war disablement has been accepted, but the disablement has been assessed at less than 20%.

Outcome

The final decision on a claim or action.

PAT

Pensions Appeal Tribunal.

Provision of Treatment

The reimbursement of Treatment/Medical expenses for War Pensioners living abroad.

Received

When a claim, appeal or piece of correspondence has been received by the SPVA.

Registered

When the case or claim is registered on the War Pension Computer System.

Restored Widow(er)

A war widow(er) whose War Widow(er)s Pension was withdrawn on his/her remarriage and who subsequently re-claims the pension on becoming widowed again, legally separated, or divorced.

Unmarried Dependant

Partner who lived with the ex-service person for at least 6 months before his enlistment, was maintained by him and who has borne his child.

War

1914 War	Disabled due to service between 4 August 1914 and 30 September 1921.
Inter War	Disabled due to service between 1 October 1921 and 2 September 1939.
1939 Onwards	Disabled due to service from 3 September 1939 to date.

War Orphan

Child of deceased service person who has no surviving mother or father. Child whose mother was divorced from a service person at the time of death. Child who is not in the care of the surviving parent.

War Parent

Parent of the deceased service person.

Widow(er)

Spouse of ex-service person whose death was whilst in service or related to a disablement due to service from 4 August 1914 to date.

From 8 April 2002 a change in the law governing the War Pensions Scheme means that the provisions for war widowers have been equalised to align with those available to war widows. This change in the war pension law applies from the 8 April 2002 onwards and means that war widowers are now entitled, as appropriate, to the same basic pension, supplementary pension and allowances (e.g. in respect of any dependant children) as war widows. In particular, the means-testing element previously applied to war widowers' claims and pensions has been removed.

Appendix – Changes to the publication

Due to improvements in data processing, some tables within the publication have been updated. As such, figures may be different to those previously published.

The table below documents these changes and the revisions made, where applicable.

Publication in which revision was made	Number of Revised Table	Reason for Revision	Period for which Revisions have been Published
June 2008	1.5	Previously unidentified codes have been re-classified, therefore reducing the number of cases with a 'Not Known' Government Office Region, and increasing the numbers in Wales, Scotland, Northern Ireland, Other UK and creating the 'UK Unknown' Category.	March 2003 – March 2008
September 2008	1.7	More accurate means of calculating the average amounts paid have been implemented, therefore slightly increasing previously published figures for average amounts received by War Widow(er)s.	March 2007 – June 2008

Revisions can be found by going to <http://www.dasa.mod.uk> and clicking on 'National Statistic Publications' then 'War Pension Statistics' and 'Historical'.

Revisions prior to March 2007 are available upon request to dasa-info@dasa-office@mod.uk