

Single



Typical single accommodation

Single man room



Single man room

Ablutions





Common Room

Akrotiri Married Quarter - Type IV - Grade 2

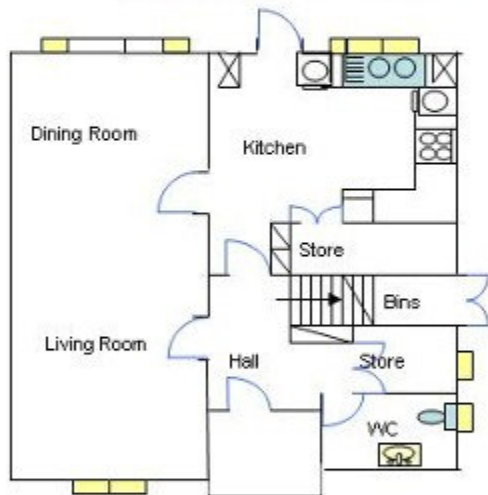


New House:

Type: 4

Grade: 2

Your quarter is situated within RAF Akrotiri station and within a 15 min walk from main station amenities. It is a concrete framed 2 storey, built in 2000 and of good general repair. Fitted with LPG direct fire heat and DHW systems that include solar panels.



Measurements for the Ground Floor

Living Room =
Dining Room =
Kitchen =
Hall =

Measurements for the First Floor

Bed Room 1 =
Bed Room 2 =
Bed Room 3 =
Bed Room 4 =

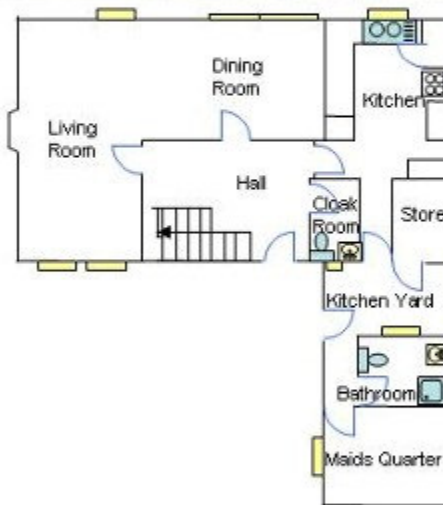
Akrotiri
Married Quarter - Type IV - Grade 2 - Interior



Type 4 Grade 4



Stone House
Type: 4
Grade:4



Measurements for the Ground Floor

Living Room =

Dining Room =

Kitchen =

Hall =

Measurements for the First Floor

Bed Room 1 =

Bed Room 2 =

Bed Room 3 =

Maids Quarter =

Type B Grade 4A



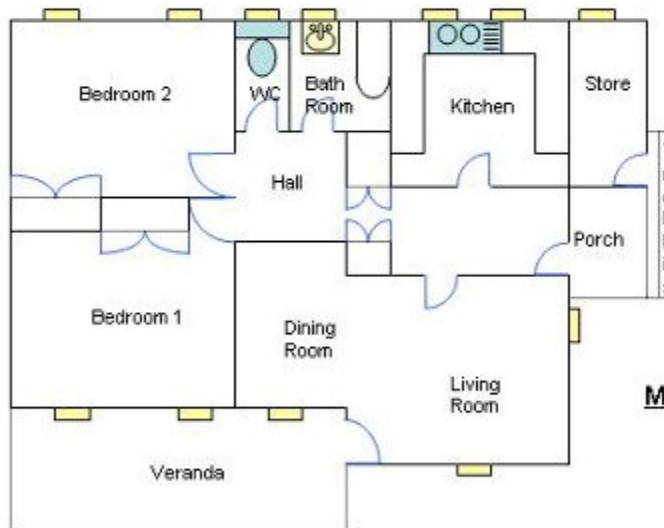
Ca-wood Bungalow

Type: B

Grade: 4A

Your quarter is situated within RAF Akrotiri station and are the most central to station amenities. Dating back to the 1950's, a mixture of terraced or semi-detached houses, with lightweight panel structure. Generally roomy and cool, and most have large gardens with veranda. Gas heaters or oil filled radiators supplied for winter months.

Separate toilet. A sociable place to live, each quarter is different. Some appear weathered however, they are a popular choice.



Measurements for the Ground Floor

Bedroom 1 =

Bedroom 2 =

Living Room =

Dining Room =

Kitchen =

Hall =

Type B/C Grade 4



Stone House
Type: B/C
Grade:4

Measurements for the First Floor

Bed Room 1 =

Bed Room 2 =

(Bed Room 3) =

Measurements for the Ground Floor

Living Room =

Dining Room =

Kitchen =

Hall =

Type B/C Grade 4 Interior



Type C Grade 2



New House:

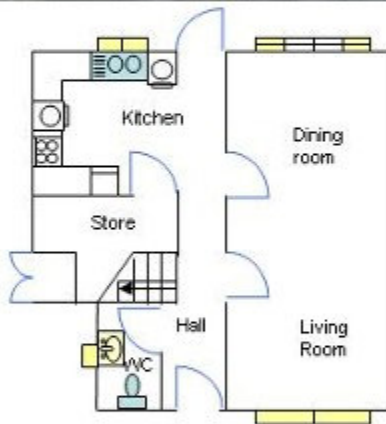
Type: C

Grade: 2

Your quarter is situated within RAF Akrotiri station and within a 20 min walk from the main station amenities. It is a semi-detached house, concrete-framed 2 storey, built in 2000. It is fitted with LPG Direct fired heating & DHW systems that includes solar panels.

Average sized gardens, plumbing for washing machine, dishwasher in kitchen.

Separate garage. Spacious ground floor, limited bedroom space due to fitted wardrobes.



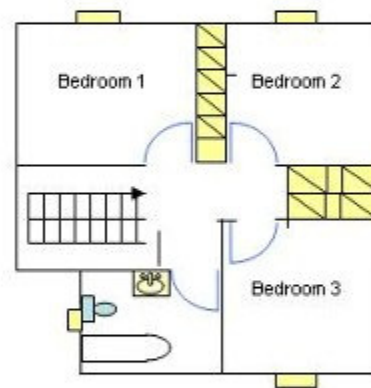
Measurements for the Ground Floor

Living Room =

Dining Room =

Kitchen =

Hall =



Measurements for the First Floor

Bed Room 1 =

Bed Room 2 =

Bed Room 3 =

Type C Grade 2 Eldorado

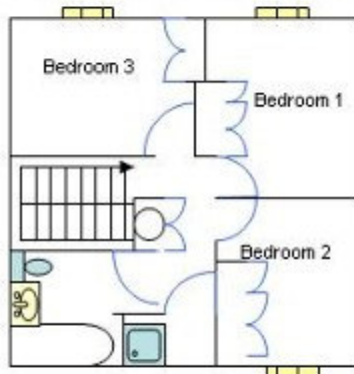


El Dorado Houses

Type: C

Grade: 2

Your quarter is situated within RAF Akrotiri station and within 25 min walk from station amenities, and near to Dreamers Bay. The estates are built along a gradual incline. The gardens back on to the bondu. All come with concrete hard standing purpose built car port. Patio doors with front and back of the living room and a wooden pergola for extra shade. Separate shower room. Second toilet downstairs. Central heating.

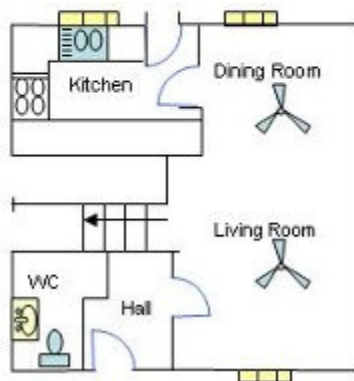


Measurements for the First Floor

Bed Room 1 =

Bed Room 2 =

Bed Room 3 =



Measurements for the Ground Floor

Living Room =

Dining Room =

Kitchen =

Hall =

Type C Grade 4

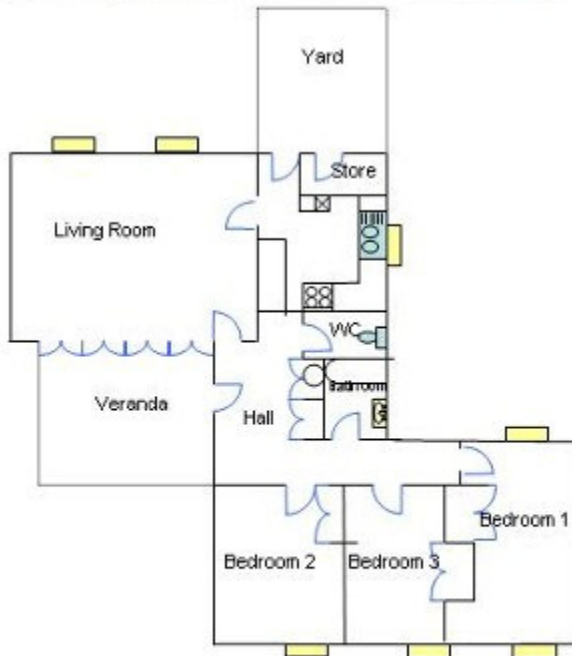


Stone Bungalow

Type: C

Grade: 4

Your quarter is situated within a pleasant cul-de-sac on RAF Akrotiri station approx a 10 min walk from the main station amenities. The semi-detached stone built bungalow provides good storage space with a spacious lounge and garden. There is however no space in the kitchen for a dishwasher unless cupboards are removed. Gas heaters or oil filled radiators supplied for winter months. Standard car port.



Measurements for the Ground Floor

Bed Room 1 =

Bed Room 2 =

Bed Room 3 =

Living Room =

Dining Room =

Kitchen =

Hall =

Type C Grade 4 Interior



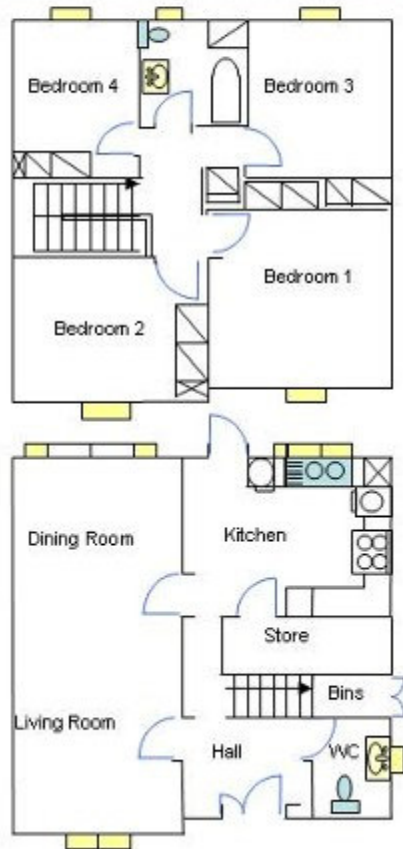
Type D Grade 2



New House:
Type: D
Grade: 2

Your quarter is situated within RAF Akrotiri station and within a 20 min walk from the main station amenities. It is a semi-detached house, concrete-framed 2 storey, built in 2000. It is fitted with LPG Direct fired heating & DHW systems that includes solar panels.

Average sized gardens, plumbing for washing machine, dishwasher in kitchen.
separate garage.



Measurements for the First Floor

Bed Room 1 =
Bed Room 2 =
Bed Room 3 =
Bed Room 4 =

Measurements for the Ground Floor

Living Room =
Dining Room =
Kitchen =
Hall =

Type D Grade 2 Interior

