

RELEASE 2



Ministry of Defence

Produced by Defence Analytical Services and Advice

F 1.2 Public Expenditure by Departmental Grouping

	Current Prices (£ billion)		
	Outturn 2009/10	Outturn 2010/11	Provisional Outturn 2011/12
Total Gov't Resource DEL	333.2	345.8	340.7
Of which:			
Education	49.6	51.4	51.4
NHS (Health)	95.8	99.0	101.6
Communities Local Government	25.5	26.0	26.6
Home Office	9.5	9.3	0.8
Defence	34.9	39.0	37.7
Work and Pensions	8.8	8.8	7.5
Total Gov't Capital DEL	57.0	49.8	42.2
Of which:			
Education	7.4	7.1	5.1
NHS (Health)	5.2	4.2	3.8
Communities Local Government	0.3	-0.1	-
Home Office	1.0	0.7	0.5
Defence	9.1	9.3	9.0
Work and Pensions	0.3	0.3	0.3
Gov't Dept. Expenditure Limits	390.1	395.7	382.9
Of which:			
Total Gov't AME	264.9	170.7	254.5
Of which:			
Education	10.4	-10.5	11.7
NHS (Health)	16.2	-11.4	19.6
Communities Local Government	0.3	1.1	0.7
Home Office	0.7	0.9	1.1
Defence	7.9	-0.9	7.9
Of Which: Defence (Excl. AFPS)	2.4	7.9	11.0
Work and Pensions	146.7	151.5	159.3
Total Gov't Spend (RDEL+CDEL+AME)	655.0	566.3	637.4

F 1.3b Defence Expenditure by Commodity Block

	Inclusive of non-recoverable VAT at Current Prices (£ million)	
	Outturn 2009/10	Outturn 2010/11
Defence Spending	37 989	37 989
Departmental Expenditure Limits (DEL)	46 994	46 994
Cash Resource DEL	37 989	37 989
Of which:		
Personal Costs	12 846	10 101
Service Personnel Costs	10 101	10 101
Civilian Personnel Costs	2 745	2 745
Infrastructure Costs	4 980	2 538
Inventory Consumption	2 538	2 538
Equipment Support Costs	6 256	6 256
Other Costs & Services	1 800	1 327
Receipts & Other Income	9 825	9 825
Depreciation & Impairment	348	348
Cash Release of Provisions	833	833
Research & Development Costs	-	-
Global Post	46	46
Arm's Length Bodies	187	187
Capital DEL	9 014	9 014
Of which:		
Single Use Military Equipment	5 284	3 863
Other (Facac)	3 863	3 863
Asset/State Disposal Costs	-150	-150
New Loans and Loan Repayments	-5	-5
Arm's Length Bodies	2	2
Annually Managed Expenditure (AME)	957	957
Of which:		
Depreciation & Impairment	510	480
Provisions	480	480
Cash Release of Provisions	-345	-345
Capital Spending in AME	-10	-10
Movement on Fair Value of Financial Instruments	347	347
War Pensions Benefits	916	916

F 1.4 Estimated MOD Equipment Expenditure

	Inclusive of non-recoverable VAT at Current Prices (£ million)			
	2008/09	2009/10	2010/11	2011/12
Estimated MOD Equipment Expenditure	13 386	13 174	13 994	15 251
Of which:				
Capital Expenditure on Equip.	6 669	6 469	6 815	6 661
Equipment Support	4 292	4 212	4 689	6 256
Research & Development	2 426	2 493	2 490	2 334

F 1.7 MOD Research & Development Expenditure Outturn

	Inclusive of non-recoverable VAT at Current Prices (£ million)		
	2008/09	2009/10	2010/11
Research & Development	2 674	1 839	1 782
Total Gross Expenditure on R&D	2 674	1 839	1 782
Of which:			
Intarmural	262	286	226
Extramural	1 812	1 551	1 556
Receipts	83	87	89
Of which used:			
Intarmurally	75	80	72
Extramurally	8	7	16
Total Net Expenditure on R&D	1 991	1 752	1 693
Research	2008/09	2009/10	2010/11
Total Gross Expenditure on Research	622	614	576
Of which:			
Intarmural	186	204	163
Extramural	436	410	412
Receipts	37	39	41
Of which used:			
Intarmurally	36	38	40
Extramurally	1	1	1
Total Net Expenditure on Research	584	575	534
Development	2008/09	2009/10	2010/11
Total Gross Expenditure on Development	1 462	1 225	1 207
Of which:			
Intarmural	76	83	63
Extramural	1 376	1 142	1 143
Receipts	46	49	48
Of which used:			
Intarmurally	39	42	37
Extramurally	7	7	15
Total Net Expenditure on Development	1 406	1 177	1 159

A NATIONAL STATISTICS PUBLICATION

Symbols
 } Categories merged for some years
 || Discontinuity in time series
 * Not applicable
 .. Not available
 p Provisional
 r Revised
 r Revised but still provisional
 e Estimate
 - Zero or rounded to zero

Rounding
 Individual figures in the tables are rounded and thus may not sum precisely to the totals shown.

Sources
 The information given in this factsheet is based on the more detailed information given in the 2012 edition of UK Defence Statistics.
 UK Defence Statistics is available on the World Wide Web at www.dasa.mod.uk.



CONTENTS

Numbering matches relevant tables in UKDS 2012

Finance	
F 1.2	Public Expenditure by Departmental Grouping
F 1.3b	Defence Expenditure by Commodity Block
F 1.4	Estimated MOD Equipment Expenditure
F 1.7	MOD Research and Development Expenditure Outturn
F 1.9	MOD Expenditure on External Assistance
F 1.11	Defence Inflation Estimates
F 1.12	Estimated Defence Expenditure Outturn in the UK: Breakdown by Industry Group
F 1.15	Estimates of Identified Export Orders: Defence Equipment & Services
F 1.17	Contracts Placed: By Type
F 1.19	Organisations paid £50 million or more by the Ministry of Defence in 2011/12
F 1.22	NATO Countries' Defence Expenditure as % of GDP
F 1.23	Top 15 World-wide Military Spenders: 2011

Personnel

F 2.1	Regular Service and Civilian Personnel Strength
F 2.4	Full-time Trained Strength and Requirement
F 2.9	Ethnic Composition of Serving Members of the UK Regular Forces
F 2.11	Strength of UK Regular Forces by Rank
F 2.15 / 2.16	Strength of Reserve Forces and Cadets
F 2.17	Intake of UK Regular Forces from Civil Life by Service
F 2.20	Outflow from UK Regular Forces by Service
F 2.17 / 2.20	Intake and Outflow of UK Regular Forces
F 2.23	Indices and Illustrative Rates of Military Salary
F 2.26	Civilian Personnel by Budgetary Area
F 2.34	Intake and outflow of Civilian personnel

Health

F 3.1 / 3.2	Deaths in the UK Regular Armed Forces
F 3.5	Suicide, open verdict and awaiting verdict deaths in the UK Regular Armed Forces

Formations, Vessels, Aircraft and Vehicles of the Armed Forces

F 4.2	Operational RN and Royal Fleet Auxiliary ships
-------	--

Search and Rescue

F 5.1 / 5.2	Search and Rescue Operations by UK Military SAR units
-------------	---

Land Holdings and Buildings

F 6.1 / 6.3	Land Holdings by type of use and parent service
-------------	---

F 1.9 MOD Expenditure on External Assistance

	VAT exclusive at Current Prices (£ million)		
	2009/10	2010/11	2011/12
Total	79	26	19
Total By Category	79	26	19
Of which:			
Strategy	7	1	1
Finance	13	5	2
Legal	6	2	3
HR and Training	2	1	-
Organisation and Change Management	4	4	8
Marketing and Communication	1	-	-
Programme and Project Management	6	3	-
Technical	3	3	2
ITIS	31	3	-
Property	3	3	2
Procurement	2	-	-

F 1.11 Defence Inflation Estimates

	Index (Growth Rate)						
	2006/07	2007/08	2008/09	2009/10	2010/11	2011/12	2012/13
All Defence (UK)	100.6	107.6	111.8	116.5	120.2	125.2	129.4
(2.4%)	(3.9%)	(4.2%)	(4.2%)	(3.7%)	(4.4%)	(4.6%)	
Contracts	636	106.9	110.9	115.5	118.4	122.9	127.1
(3.4%)	(3.7%)	(4.2%)	(2.8%)	(3.8%)	(4.4%)	(4.4%)	
Labour costs	348	109.2	113.9	118.0	122.6	126.3	132.6
(3.2%)	(4.2%)	(2.8%)	(4.0%)	(4.7%)	(4.7%)	(4.6%)	
Cash Offices	15	102.2	104.7	114.4	123.8	135.8	138.2
(1.4%)	(2.4%)	(9.3%)	(8.2%)	(9.7%)	(7.7%)	(7.7%)	

F 1.12 Estimated Defence Expenditure Outturn in the UK: Breakdown by Industry Group

	VAT exclusive at Current Prices (£ million)		
	2009/10	2010/11	2011/12
Total	29 990	29 990	29 990
A, B	-	-	-
C	2 460	2 430	2 430
D	1 720	1 480	1 480
E	100	80	80
F	260	250	250
G	670	670	670
H	690	720	720
I	450	410	410
J	2 290	2 930	2 930
K	2 640	2 140	2 140
L	400	350	350
M	1 640	1 770	1 770
N	350	420	420
O, P, Q, R, S, T	170	170	170
U	60	50	50
V	90	100	100
W	420	610	610
X	10	10	10
Y	150	220	220
Z	2 990	2 200	2 200
AA	2 160	2 180	2 180
AB	1 250	1 250	1 250

F 1.22 NATO Countries' Defence Expenditure as % of GDP

Country	Constant 2005 Prices (% of GDP)		
	2009	2010	2011
NATO - Total	3.4	3.4	3.4
NATO - Europe	1.8	1.7	1.6
Albania	1.5	1.6	1.5
Belgium	1.2	1.1	1.1
Bulgaria	1.9	1.7	1.4
Croatia	1.6	1.5	1.5
Czech Republic	1.6	1.3	1.1
Denmark	1.4	1.5	1.4
Estonia	1.8	1.8	1.7
France	2.1	2.0	1.9
Germany	1.4	1.4	1.4
Greece	3.2	2.6	2.1
Hungary	1.2	1.1	1.0
Italy	1.3	1.2	1.2
Latvia	1.2	1.0	1.0
Lithuania	1.7	0.9	0.8
Luxembourg	0.4	0.5	0.5
Netherlands	1.5	1.4	1.3
Norway	1.6	1.6	1.6
Poland	1.7	1.8	1.7
Portugal	1.6	1.6	1.5
Romania	1.4	1.3	1.3
Slovak Republic	1.5	1.3	1.1
Slovenia	1.6	1.6	1.3
Spain	1.2	1.1	0.9
Turkey	2.0	1.9	1.8
United Kingdom	2.7	2.7	2.6
North America	5.1	5.0	4.5
Canada	1.4	1.4	1.4
United States	5.4	5.4	4.8

F 1.15 Estimates of Identified Export Orders: Defence Equipment & Services

	Current Prices (£ million)		
	2009	2010	2011
Identified Export Orders for Defence Equipment and Services	7 251	5 829	5 384
Split by Equipment Type:			
Air Sector	5 263	3 941	3 170
Land Sector	940	514	521
Sea Sector	520	319	213
Not Specified	528	1 056	1 481

F 1.17 Contracts Placed: By Type

	Current Prices (£ million) / Percentage		
	2009/10	2010/11	2011/12
Total Value of new MOD HQ Contracts Placed	9 372	7 235	9 214
Percentage of Total Value:			
Competitive	25	48	56
Non-Competitive	73	36	40
Other	3	16	4
Total Number of new MOD HQ Contracts Placed	8 012	6 424	4 588

F 2.1 Regular Service and Civilian Personnel Strength

1 April	Thousands: FTE			
	2000	2010	2011	2012
Total Personnel	334.0	284.0	275.7	257.1
Service	212.7	198.2	192.7	186.1
UK Regulars	207.6	191.7	186.4	179.8
FTRS	1.0	2.3	2.1	2.1
Gurkhas	3.7	3.8	3.9	3.8
Locally Entered / Engaged	0.4	0.4	0.4	0.4
Civilian	121.3	85.8	83.1	71.0
Level 1	91.9	65.9	63.1	54.5
Trading Funds	14.5	9.7	9.4	7.1
Locally Engaged	14.8	10.2	10.6	9.4

Data from the Joint Personnel Administration System for 2010 and 2011 have been reviewed and finalised, therefore some figures may differ from previous publications. Please see Chapter 2 introduction for more details.

F 2.4 Full-time Trained Strength and Requirement

1 April	Number 2012			
	2000	2010	2011	2012
All Services	198 160	178 750	179 250	174 840
Requirement	198 160	178 750	179 250	174 840
Strength	190 270	177 890	176 860	170 010
Surplus/deficit	-7 890	-860	-2 440	-4 830
as % of requirement	-4.0	-0.5	-1.3	-2.8
Naval Service	39 860	35 790	35 700	34 800
Requirement	39 860	35 790	35 700	34 800
Strength	38 880	35 500	35 420	33 290
Surplus/deficit	-990	-290	-280	-1 510
as % of requirement	-2.5	-0.8	-0.8	-4.3
Army	106 400	102 160	102 210	101 210
Requirement	106 400	102 160	102 210	101 210
Strength	100 190	102 200	101 340	98 600
Surplus/deficit	-6 210	100	-870	-2 610
as % of requirement	-5.8	-	-0.8	-2.6
RAF	51 900	40 800	41 340	38 830
Requirement	51 900	40 800	41 340	38 830
Strength	51 210	40 130	40 090	38 120
Surplus/deficit	-690	-670	-1 250	-700
as % of requirement	-1.3	-1.7	-3.0	-1.8

Full-time strengths include UK Regulars, Trained Gurkhas and FTRS.

F 2.9 Ethnic Composition of Serving Members of the UK Regular Forces

1 April 2012	Number and Percentage		
	Total	Black and Minority Ethnic	Black and Minority Ethnic
All Services	179 800	12 300	6.9
Officers	30 700	720	2.4
Other ranks	149 100	11 580	7.9
Naval Service	35 540	1 230	3.5
Officers	7 190	130	1.8
Other ranks	28 350	1 110	4.0
Army	104 250	10 300	9.9
Officers	14 480	400	2.8
Other ranks	89 780	9 900	4.0
RAF	40 000	770	2.0
Officers	9 030	190	2.3
Other ranks	30 970	580	1.9

Percentages are calculated from unrounded data and only include personnel with a known ethnic origin.

F 2.11 Strength of UK Regular Forces by rank

1 April	Number			
	2000	2010	2011	2012
Officers	32 920	31 930	31 630	30 700
by rank:				
Major General and above	150	140	140	140
Brigadier	370	360	340	330
Colonel	1 100	1 220	1 200	1 140
Lieutenant Colonel	3 910	4 130	4 080	3 920
Major	9 940	9 630	9 450	9 050
Captain	11 800	11 910	12 080	12 030
Lieutenant and below	5 240	4 650	4 540	4 090
Other Ranks	175 100	159 780	154 530	149 100
by rank:				
Warrant Officer	8 690	9 250	8 780	8 320
Staff Sergeant	16 190	13 170	12 870	12 230
Sergeant	23 840	21 070	20 690	19 710
Corporal	33 270	30 110	29 850	28 890
Lance Corporal	16 200	15 630	16 880	16 870
Private (including Juniors)	76 900	69 650	65 460	63 080

1. Figures are for paid rank. Includes equivalent ranks for the Naval Service and RAF.

F 2.14/2.15 Strength of Reserve Forces and Cadets

1 April	Thousands			
	2000	2010	2011	2012
All Services	293.1
Regular Reserves	241.6
Volunteer Reserves	51.5	37.6 *	35.3 *	35.1
Naval Service	28.2
Regular Reserves	24.2
Volunteer Reserves	4.1	2.9	2.5	2.6
Army	221.1
Regular Reserves	175.5
Volunteer Reserves	45.6	33.1 *	31.4 *	31.2
Royal Air Force	43.7
Regular Reserves	41.9
Volunteer Reserves	1.8	1.5 *	1.4 *	1.4
All Services Cadets	132.0	133.0	137.0	139.8

Reserve figures exclude FTRS, URNU and UAS personnel but include OTC and mobilised reservist personnel. Cadet figures exclude officers, training and administrative staff.

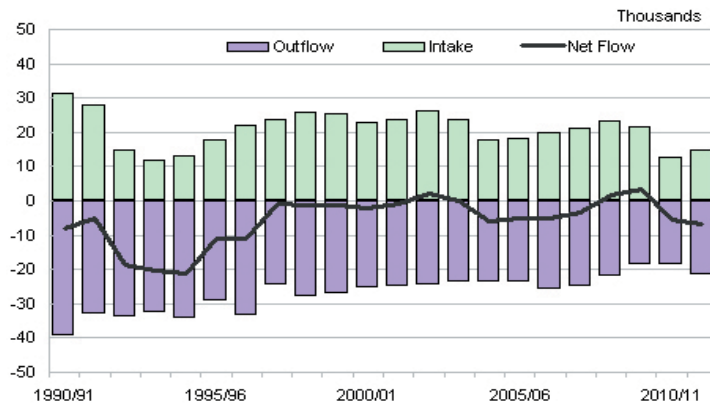
F 2.17 Intake to UK Regular Forces from Civil Life by Service

All Services	Number			
	2000/01	2009/10	2010/11	2011/12
All Services	23 020	21 500	12 730	14 800
Officers	1 760	1 580	1 360	1 070
Other Ranks	21 260	19 920	11 370	13 730
Naval Service	4 620	4 130	2 550	2 220
Officers	450	390	300	280
Other Ranks	4 180	3 740	2 250	1 940
Army	14 770	13 910	8 760	11 190
Officers	870	790	780	740
Other Ranks	13 900	13 120	7 980	10 480
RAF	3 630	3 460	1 410	1 390
Officers	440	400	280	80
Other Ranks	3 190	3 070	1 140	1 310

F 2.20 Outflow from UK Regular Forces by Service

2000/01	Number			
	2009/10	2010/11	2011/12	2012/13
All Services	24 950	18 270	18 140	21 370
Officers	2 290	1 880	1 930	2 560
Other Ranks	22 650	16 390	16 200	18 810
Naval Service	5 040	3 720	3 630	4 320
Officers	480	440	460	570
Other Ranks	4 550	3 280	3 170	3 750
Army	15 230	11 560	11 500	13 200
Officers	1 150	980	990	1 240
Other Ranks	14 080	10 580	10 510	11 960
RAF	4 680	2 990	3 010	3 850
Officers	660	460	490	740
Other Ranks	4 020	2 530	2 520	3 110

F 2.17 / 2.20 Intake and Outflow of UK Regular Forces



F 2.23 Indices and Illustrative Rates of Military Salary

(2001/02)=100	2001/02	2010/11	2011/12	2012/13
Military salaries Index¹:	100	133	133	133
M. General and above	100	136	136	136
Brigadier and above	100	134	134	134
Sergeant and below	100	131	131	131
Corporal and below	100	132	133	133
Illustrative rates				
General	125,928	177,993	177,993	177,993
Brigadier	74,135	100,964	100,964	100,964
Colonel	59,280	81,310	81,310	81,310
Lieutenant Colonel	56,586	77,617	77,617	77,617
Major	43,472	57,199	57,199	57,199
Captain	30,372	39,959	39,959	39,959
Lieutenant	23,787	31,147	31,147	31,147
2nd Lieutenant	18,798	24,615	24,615	24,615
Warrant Officer I	35,420	46,753	46,753	46,753
Warrant Officer II	33,029	43,252	43,252	43,252
Staff Sergeant	26,904	38,256	38,256	38,256
Sergeant	28,200	36,929	36,929	36,929
Corporal	25,342	33,182	33,182	33,182
Lance Corporal	22,101	28,940	28,940	28,940
Private	12,071	17,015	17,736	17,986

1. Indices are based on average daily rates of pay during the year. All indices are calculated using standard rank weights taken at 1 March 2008. These have been updated since UKDS 2007.

F 2.26 Civilian personnel¹ by Budgetary Area

1 April 2012	FTE	
	Non-industrial	Industrial
Navy²	3 520	470
Fleet	1 530	470
Royal Fleet Auxiliary Service ²	2 000	-
Army	9 440	3 720
Air	4 770	1 770
Defence Equipment and Support	12 170	1 920
MOD Headquarters	16 000	720
Head Office & Corporate Services	10 970	80
Joint Forces Command	2 680	380
Defence Infrastructure Organisation	2 350	260
Trading Funds²	7 110	-
Defence Science & Technology	3 640	-
Laboratory ²	2 490	-
Defence Support Group ²	980	-
Hydrographic Office ²	-	-
Unallocated	10	-

1. Excludes Locally Engaged Civilians
2. Industrial and non-industrial personnel cannot be distinguished for Trading Funds and RFA. All staff are shown here under Non-industrial.

F 2.34 Intake and Outflow of Civilian Personnel¹

Total intake	Number: Headcount		
	2009/10	2010/11	2011/12
Total intake	5 140	2 040	1 380
Total outflow	5 540	5 270	12 360
Non-industrial Intake	3 340	1 280	690
Outflow	3 880	3 630	7 370
Resignation	1 000	1 020	800
Retirement ²	560	1 060	640
Voluntary Release or Redundancy	390	180	40
Voluntary Early Release Scheme ³	-	-	5 220
Compulsory Severance or Redundancy	180	110	10
Health / Death in Service	230	210	200
Other ⁴	1 520	1 050	460
Industrial Intake	860	330	180
Outflow	830	840	2 050
Resignation	190	200	160
Retirement ²	170	280	220
Voluntary Release or Redundancy	20	10	-
Voluntary Early Release Scheme ³	-	-	730
Compulsory Severance or Redundancy	30	40	10
Health / Death in Service	60	80	70
Other ⁴	370	240	860
Trading Funds	940	430	520
Outflow	830	800	2 930

1. Excludes Royal Fleet Auxiliary and Locally engaged civilians.
2. MOD civil servants can take normal retirement at either age 60 or age 65. As restrictions on working above normal retirement age were removed in 2010, allowing personnel to work beyond retirement age, and normal retirement age is due to increase in coming years, this category has been redefined from previous publications to incorporate normal retirement at any age, including early retirement, in line with definitions used in other National Statistics publications. As a result figures shown here have been calculated according to current definitions for the time series, and may not match those published in previous years.
3. Personnel exiting under the Voluntary Early Release Scheme (VERS) from 30th September 2011 onwards are listed separately from exits under alternative release or redundancy schemes.
4. Includes those whose reason for leaving is unknown and those who were dismissed, transferred out of MOD, privatised or at the end of casual or fixed term appointments.

F 3.1/3.2 Deaths in the UK Regular Armed Forces

Numbers of Deaths by Service	2008	2009	2010	2011
	Total	137	205	187
Naval Service	40	23	30	19
Army	79	158	136	98
Royal Air Force	18	24	21	15
Rate per 100,000 by Service:	74	107	97	70
Naval Service	110	57	78	52
Army	73	134	116	90
Royal Air Force	37	54	49	37
Numbers of deaths by cause:	137	205		