

Naval Service Quarterly Pocket Brief July 2012

Produced by DASA (Navy)
Building 33
Whale Island
Portsmouth
PO2 8ER



Telephone: 02392 547430
Fax: 02392 547431

N.B. Sum of parts may not equal totals due to rounding

Due to the introduction of JPA to the Royal Naval Service during October 2006, all data are provisional and subject to revision.



2. Strength Against Liability at 1 July 2012

	Total Strength	Officers		Ratings	
		RN	RM	RN	RM
Regular Trained Strength	32,700	5,560	780	20,130	6,220
Full Time Reservists (FTRS) "Regular"	100	40	~	60	~
Liability ¹	33,730	5,610	730	20,980	6,420
Surplus/Deficit ²	(930)	~	60	(790)	(200)
Untrained Strength	2,560	730	40	1,000	780
Full Time Reservists (FTRS) "Non-Regular"	250	30	~	170	40
Total Regular Trained & Untrained Strength	35,250	6,300	830	21,120	7,010

	Total Trained and Untrained Strength	Trained Strength	FTRS "Regular"	Historic Liability ¹	Surplus/Deficit ²	Untrained Strength	FTRS "Non-Regular"
01-Apr-12	35,540	33,190	100	34,800	(1,510)	2,360	260
01-Apr-11	37,660	35,250	180	35,700	(270)	2,410	250
01-Apr-10	38,730	35,170	330	35,790	(290)	3,560	-
01-Apr-09	38,340	34,400	620	35,760	(740)	3,940	-

¹The latest liability is 2a_11 scaled to DP11, provided by DNPS

²Surplus/Deficit = Trained Strength + FTRS "Regular" - Liability.

5. Trained Regular Strength by Branch at 1 July 2012

RN Officers		RN Ratings		RM Officers	
Warfare	2,760	Warfare XR	5,060	GD	770
Engineer	1,730	Warfare SM	830	Band	10
Logistics	550	Logistics	2,860	Career	-
Medical	340	Medical	710	Total	780
Dental	60	Engineering GS	4,420		
Chaplain	60	Engineering SM	2,140		
No Specialisation	-	Warfare Aviation	730		
Family	-	Air Engineering	3,200		
Total	5,500	Careers	-	GD	5,880
		Net Specified	-	Band	340
		Total	19,950	Careers	-
				Total	6,220

RM Other Ranks	
GD	5,880
Band	340
Careers	-
Total	6,220

QARNNS Officers	
	70

QARNNS Ratings	
	180

Royal Navy Total	
Total Officers	6,350
Total Ratings	26,350
Total	32,700

CONTACTS

Produced by:

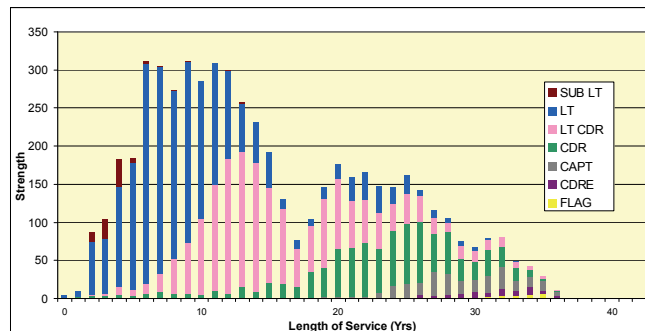
DASA (Navy)
Walcheren Building (33)
Whale Island
Portsmouth
Hampshire
PO2 8ER

DASA welcome feedback on our statistical products. If you have any comments or questions about this publication or about DASA statistics in general, you can contact us as follows:

Email DASA-enquiries-mailbox@mod.uk

or visit our website at www.dasa.mod.uk

3. Trained Regular RN Officers by Paid Rank and LOS Since Entry at 1 July 2012



6. Total RN Regular Strength by Gender at 1 July 2012

Officers	Trained			Untrained		
	Male	Female	Total	Male	Female	Total
FLAG OFF	30	-	30	-	-	-
CDRE	70	-	70	-	-	-
CAPT	250	~	250	-	-	-
CDR	920	40	960	-	-	-
LT CDR	1,640	190	1,840	-	-	-
LT	1,970	360	2,330	200	20	220
SUB LT	80	10	90	380	70	450
MID	-	-	-	60	10	60
Total	4,960	610	5,560	640	100	730

Ratings	
WO	560
WO2	510
CPO	2,870
PO	3,170
LDG	4,040
AB	6,650
Total	17,790

Ratings	
WO	30
WO2	~
CPO	180
PO	300
LDG	710
AB	1,110
Total	2,340

Ratings	
WO	590
WO2	510
CPO	3,050
PO	3,470
LDG	4,750
AB	7,760
Total	20,130

Ratings	
WO	-
WO2	-
CPO	-
PO	-
LDG	-
AB	-
Total	1,000

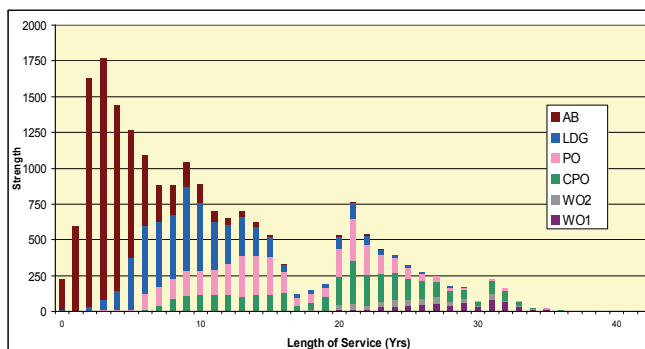
* Please note that ~ appears where there are 5 individuals or less due to the Data Protection Act 1998

1. Trained Manpower Accounts at 1 July 2012

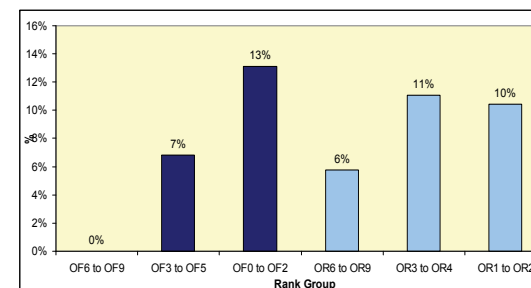
	Trained strength at 1 April 2012	GTS 2012/13	Entrants direct to trained strength 2012/13	Trained to untrained strength 2012/13	Trained wastage 2012/13	(Strength April point + inflow) - outflow	Trained strength at 1 July 2012
Officers	6,370	90	~	-	120	6,350	6,350
Ratings	26,820	300	20	-	780	26,350	26,350

GTS refers to Gains to Trained Strength and so does not include sideways entrants or trained FTRS intake. Trained FTRS intake are shown as entrants direct to the trained strength.

4. Trained Regular RN Ratings by Paid Rank and LOS Since Entry at 1 July 2012



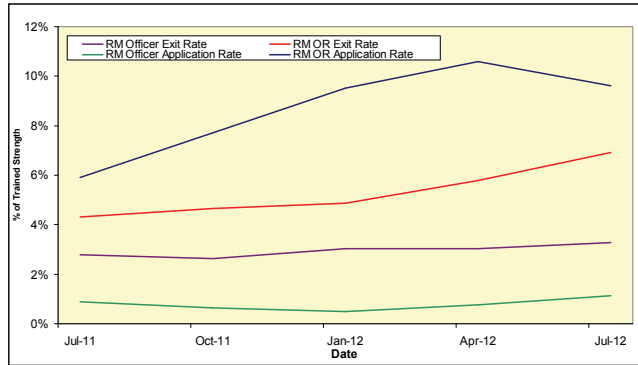
7. UK Regular Naval Service Females as a percentage of each paid rank group at 1 July 2012



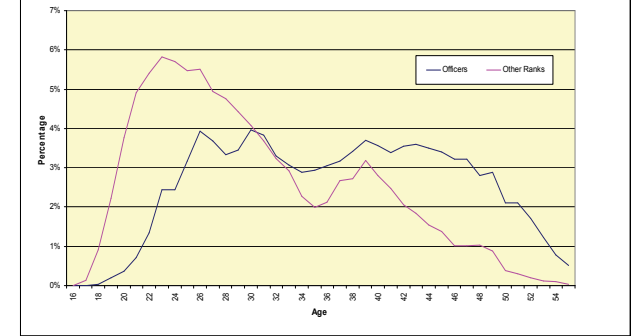
8. RN/RM Top Level Budget Trained Strength at 1 July 2012

Top Level Budget	
Navy Command	26,210
Navy Command Unallocated	~
Land Command	1,120
Air Command	510
Central	4,860
Centre	730
CJO	2,220
DE&S	1,910
Total	32,700

11. RM Voluntary Outflows and Application Rates as % of Trained Strength, 12 Months Ending 30 June 2012



14. Age Distribution - UK Regulars Naval Service 1 April 2012



9. Strength of FTRS and Activated Reservists at 1 July 2012

	Male	Female	Total
Officers			
Royal Navy	90	20	110
FTRS "Regular"	40	~	40
FTRS "Non-Regular"	20	10	30
Activated Reservists	30	10	40
Royal Marines	10	~	10
FTRS "Regular"	~	~	~
FTRS "Non-Regular"	~	~	~
Activated Reservists	~	~	~
Ratings			
Royal Navy	230	20	250
FTRS "Regular"	60	~	60
FTRS "Non-Regular"	150	20	170
Activated Reservists	20	~	20
Royal Marines	60	~	60
FTRS "Regular"	~	~	~
FTRS "Non-Regular"	40	~	40
Activated Reservists	20	~	20

12. Trained VO Applications and Exits 2012/13 to date

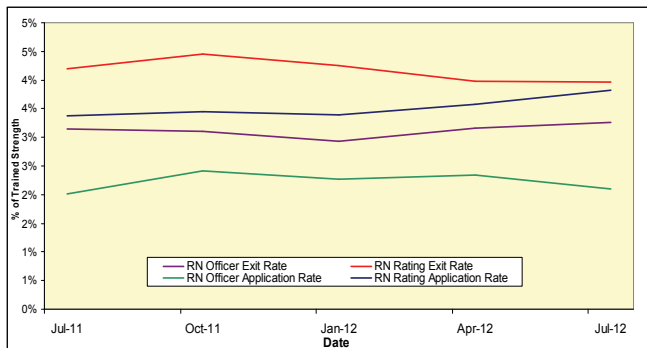
		Royal Navy		Royal Marine	
		Officers	Ratings	Officers	Ratings
VO ADDS	Applications	20	250	~	80
	Withdrawals	-	10	-	40
VO Outflows	Voluntary Outflows	50	250	10	160
	Time Expiry	40	130	10	40
	Other	10	130	~	60
	Total Exits	100	520	20	260

15. Intake for 2012/13 to date

	Intake
Total Officers	60
RN	60
From Ranks SU/YUY	10
New Entrant/Re-entrant/From Another Service/From Long Term Absentee	50
RM	~
From Ranks SU/YUY	~
New Entrant/Re-entrant/From Another Service/From Long Term Absentee	~
Total Ratings	670
RN	360
New Entrant/Re-entrant/From Another Service/From Long Term Absentee	360
Re-entrant (From Officer)	~
RM	310
New Entrant/Re-entrant/From Another Service/From Long Term Absentee	310
Re-entrant (From Officer)	~

This table includes entrants to both the untrained and trained strengths

10. RN Voluntary Outflows and Application Rates as % of Trained Strength, 12 Months Ending 30 June 2012



13. Average Age of Substantive Promotions during the 12 months ending 30 June 2012

Royal Navy	Average Age on Promotion	Royal Marines	Average Age on Promotion
LDG	27	CPL	29
PO	32	SGT	34
CPO	35	CSGT	39
WO2	41	WO2	41
WO1	44	WO1	43
LT	28	CAPTAIN RM	29
LT CDR	36	MAJOR	35
CDR	42	LT COLONEL	41
CAPTAIN	47	COLONEL	44
CDRE	49	BRIG	49
REAR ADMIRAL	50	MAJ-GENERAL	~

Please note that ~ appears where there are 5 individuals or less in accordance with Data Protection Act 1998

16. Tri-Service Strength¹ by Ethnic Origin² at 1 July 2012

	Royal Navy	Army	RAF
Total	35,250	103,590	39,440
Ethnic Minorities	1,240	10,390	770
Percentage Ethnic Minority	3.6%	10.1%	2.0%
White	33,530	92,910	36,820
Unknown	490	290	1,850

1. UK Regular Forces comprises trained and untrained personnel and excludes Gurkhas, Full Time Reserve Service personnel and mobilised reservists.

2. Ethnic minority percentage figures are based on those with a known ethnic origin. Percentages are calculated from unrounded data.