

Naval Service Quarterly Pocket Brief April 2012

Produced by DASA (Navy)
Building 33
Whale Island
Portsmouth
PO2 8ER



Telephone: 02392 547426
Internal: 93832 7426
Fax: 02392 547431
E-mail: navy@dasa.mod.uk

N.B. Sum of parts may not equal totals due to rounding

Due to the introduction of JPA to the Royal Naval Service during October 2006, all data are provisional and subject to revision.



2. Strength Against Liability at 1 April 2012

| | Total Strength | Officers | | Ratings | |
|--|----------------|--------------|------------|---------------|--------------|
| | | RN | RM | RN | RM |
| Regular Trained Strength | 33,190 | 5,580 | 790 | 20,390 | 6,420 |
| Full Time Reservists (FTRS) "Regular" Liability ^{1,2} | 100 | 40 | ~ | 60 | ~ |
| | 34,800 | 5,760 | 750 | 21,760 | 6,540 |
| Surplus/Deficit ³ | (1,520) | (140) | 50 | (1,310) | (120) |
| Untrained Strength | 2,360 | 770 | 50 | 910 | 620 |
| Full Time Reservists (FTRS) "Non-Regular" | 260 | 30 | ~ | 160 | 60 |
| Total Regular Trained & Untrained Strength | 35,540 | 6,350 | 840 | 21,300 | 7,050 |

| | Total Trained and Untrained Strength | Trained Strength | FTRS "Regular" | Historic Liability ^{1,2} | Surplus/Deficit ³ | Untrained Strength | FTRS "Non-Regular" |
|-----------|--------------------------------------|------------------|----------------|-----------------------------------|------------------------------|--------------------|--------------------|
| 01-Apr-12 | 35,540 | 33,190 | 100 | 34,800 | (1,510) | 2,360 | 260 |
| 01-Apr-11 | 37,660 | 35,250 | 180 | 35,700 | (270) | 2,410 | 250 |
| 01-Apr-10 | 38,730 | 35,170 | 330 | 35,790 | (290) | 3,560 | - |
| 01-Apr-09 | 38,340 | 34,400 | 620 | 35,760 | (740) | 3,940 | - |

¹The term "Liability" replaces the term "Requirement"

²The latest liability is 2a_11 scaled to DP11, provided by DNPS

³Surplus/Deficit = Trained Strength + FTRS "Regular" - Liability.

5. Trained Regular Strength by Branch at 1 April 2012

| RN Officers | | RN Ratings ¹ | | RM Officers | |
|-------------------|--------------|-------------------------|---------------|--------------|--------------|
| Warfare | 2,750 | Warfare XR | 5,150 | GD | 780 |
| Engineer | 1,740 | Warfare SM | 830 | Band | 10 |
| Logistics | 560 | Logistics | 2,890 | Career | - |
| Medical | 350 | Medical | 730 | Total | 790 |
| Dental | 60 | Engineering GS | 4,490 | | |
| Chaplain | 60 | Engineering SM | 2,130 | | |
| No Specialisation | - | Warfare Aviation | 750 | | |
| Family | - | Air Engineering | 3,260 | | |
| Total | 5,510 | Careers | - | GD | 6,080 |
| | | Not Specified | - | Band | 340 |
| | | Total | 20,220 | Careers | - |
| | | | | Total | 6,420 |

| RM Other Ranks | |
|----------------|--------------|
| GD | 6,080 |
| Band | 340 |
| Careers | - |
| Total | 6,420 |

| QARNNS Officers | |
|-----------------|------------|
| | 70 |
| Total | 180 |

| Royal Navy Total | |
|-----------------------|---------------|
| Total Officers | 6,370 |
| Total Ratings | 26,820 |
| Total | 33,190 |

¹Artificers have been allocated to their appropriate Branches

CONTACTS

Produced by:

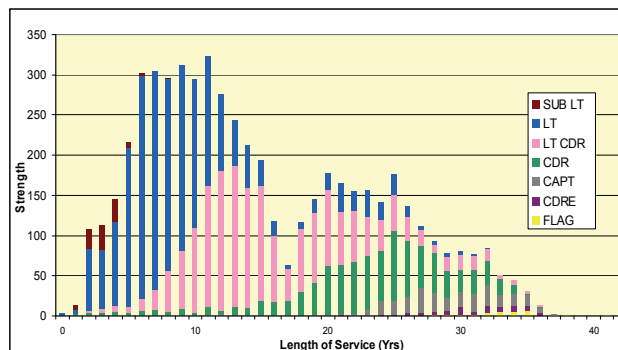
DASA (Navy)
Walcheren Building (33)
Whale Island
Portsmouth
Hampshire
PO2 8ER

DASA welcome feedback on our statistical products. If you have any comments or questions about this publication or about DASA statistics in general, you can contact us as follows:

Email DASA-enquiries-mailbox@mod.uk

or visit our website at www.dasa.mod.uk

3. Trained Regular RN Officers by Paid Rank and LOS Since Entry at 1 April 2012



6. Total RN Regular Strength by Gender at 1 April 2012

| Officers | Trained | | | Untrained | | |
|--------------|--------------|------------|--------------|------------|------------|------------|
| | Male | Female | Total | Male | Female | Total |
| FLAG OFF | 30 | - | 30 | - | - | - |
| CDRE | 70 | - | 70 | - | - | - |
| CAPT | 260 | ~ | 260 | - | - | - |
| CDR | 910 | 30 | 950 | ~ | - | ~ |
| LT CDR | 1,670 | 190 | 1,870 | - | - | - |
| LT | 1,950 | 360 | 2,300 | 200 | 30 | 230 |
| SUB LT | 80 | 10 | 100 | 410 | 60 | 470 |
| MID | - | - | - | 70 | 10 | 80 |
| Total | 4,980 | 600 | 5,580 | 680 | 100 | 770 |

| Ratings | |
|--------------|---------------|
| WO | 570 |
| WO2 | 520 |
| CPO | 2,910 |
| PO | 3,260 |
| LDG | 4,080 |
| AB | 6,670 |
| Total | 18,020 |

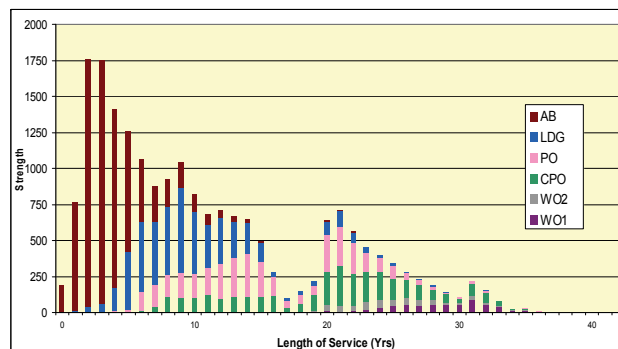
* Please note that ~ appears where there are 5 individuals or less due to the Data Protection Act 1998

1. Trained Manpower Accounts at 1 April 2012

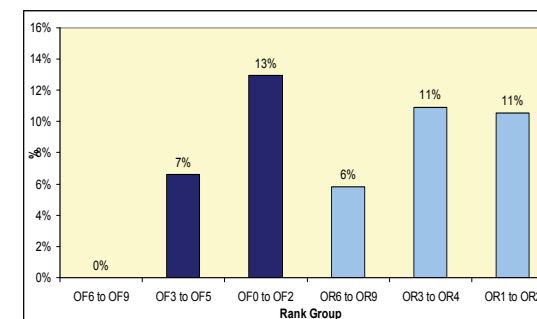
| | Trained strength at 1 April 2011 | GTS 2011/12 | Entrants direct to trained strength 2011/12 | Trained to untrained strength 2011/12 | Trained wastage 2011/12 | (Strength April point + inflow) - outflow | Trained strength at 1 April 2012 |
|----------|----------------------------------|-------------|---|---------------------------------------|-------------------------|---|----------------------------------|
| Officers | 6,550 | 340 | ~ | 10 | 510 | 6,370 | 6,370 |
| Ratings | 28,700 | 1,440 | 40 | 10 | 3,360 | 26,820 | 26,820 |

GTS refers to Gains to Trained Strength and so does not include sideways entrants or trained FTRS intake. Trained FTRS intake are shown as entrants direct to the trained strength.

4. Trained Regular RN Ratings by Paid Rank and LOS Since Entry at 1 April 2012



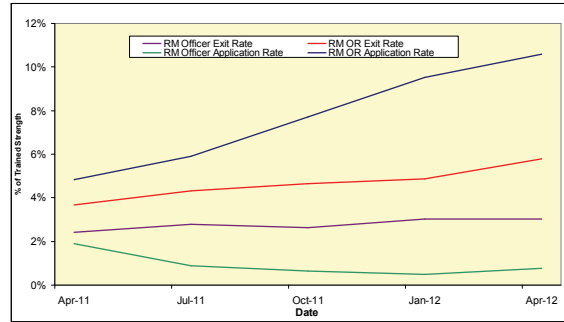
7. UK Regular Naval Service Females as a percentage of each paid rank group at 1 April 2012



8. RN/RM Top Level Budget Trained Strength at 1 April 2012

| Top Level Budget | |
|--------------------------|---------------|
| Navy Command | 26,540 |
| Navy Command Unallocated | ~ |
| Land Command | 1,140 |
| Air Command | 560 |
| Central | 4,950 |
| Centre | 760 |
| CJO | 2,240 |
| DE&S | 1,960 |
| Total | 33,190 |

11. RM Voluntary Outflows and Application Rates as % of Trained Strength, 12 Months Ending 31 March 2012



14. Age Distribution - UK Regulars Naval Service 1 April 2012



9. Strength of FTRS and Activated Reservists at 1 April 2012

| | Male | Female | Total |
|----------------------|------|--------|-------|
| Officers | | | |
| Royal Navy | 80 | 20 | 100 |
| FTRS "Regular" | 40 | ~ | 40 |
| FTRS "Non-Regular" | 20 | 10 | 30 |
| Activated Reservists | 20 | 10 | 30 |
| Royal Marines | 10 | - | 10 |
| FTRS "Regular" | ~ | - | ~ |
| FTRS "Non-Regular" | ~ | - | ~ |
| Activated Reservists | ~ | - | ~ |
| Ratings | | | |
| Royal Navy | 210 | 20 | 240 |
| FTRS "Regular" | 60 | - | 60 |
| FTRS "Non-Regular" | 140 | 20 | 160 |
| Activated Reservists | 10 | ~ | 20 |
| Royal Marines | 60 | - | 60 |
| FTRS "Regular" | - | - | - |
| FTRS "Non-Regular" | 60 | - | 60 |
| Activated Reservists | 10 | - | 10 |

12. Trained VO Applications and Exits 2011/12 to date

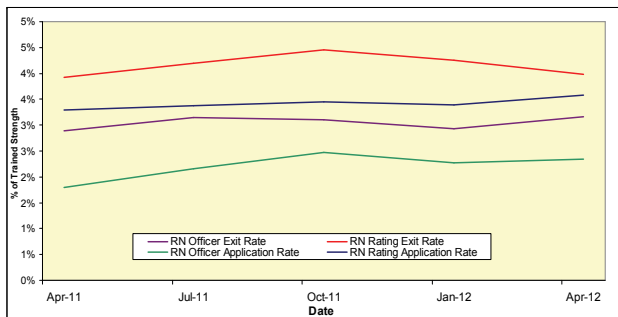
| | | Royal Navy | | Royal Marine | |
|----------|--------------------|------------|--------------|--------------|------------|
| | | Officers | Ratings | Officers | Ratings |
| VO Apps | Applications | 130 | 770 | 10 | 690 |
| | Withdrawals | - | 20 | - | 50 |
| Outflows | Voluntary Outflows | 180 | 860 | 20 | 380 |
| | Time Expiry | 170 | 510 | 30 | 120 |
| | Other | 100 | 1300 | 10 | 200 |
| | Total Exits | 450 | 2,670 | 60 | 690 |

15. Intake for 2011/12 to date

| | Intake |
|---|--------------|
| Total Officers | 360 |
| RN | 300 |
| From Ranks SUVUY | 50 |
| New Entrant/Re-entrant/From Another Service/From Long Term Absentee | 240 |
| RM | 60 |
| From Ranks SUVUY | 20 |
| New Entrant/Re-entrant/From Another Service/From Long Term Absentee | 40 |
| Total Ratings | 1,980 |
| RN | 1,250 |
| New Entrant/Re-entrant/From Another Service/From Long Term Absentee | 1,250 |
| Re-entrant (From Officer) | - |
| RM | 730 |
| New Entrant/Re-entrant/From Another Service/From Long Term Absentee | 730 |
| Re-entrant (From Officer) | - |

This table includes entrants to both the untrained and trained strengths

10. RN Voluntary Outflows and Application Rates as % of Trained Strength, 12 Months Ending 31 March 2012



13. Average Age of Substantive Promotions during the 12 months ending 31 March 2012

| Royal Navy | Average Age on Promotion | Royal Marines | Average Age on Promotion |
|--------------|--------------------------|---------------|--------------------------|
| LDG | 27 | CPL | 29 |
| PO | 32 | SGT | 34 |
| CPO | 35 | CSGT | 39 |
| WO2 | 41 | WO2 | 41 |
| WO1 | 44 | WO1 | 43 |
| LT | 28 | CAPTAIN RM | 29 |
| LT CDR | 36 | MAJOR | 35 |
| CDR | 42 | LT COLONEL | 40 |
| CAPTAIN | 47 | COLONEL | 44 |
| CDRE | 49 | BRIG | 49 |
| REAR ADMIRAL | 50 | MAJ-GENERAL | ~ |

Please note that ~ appears where there are 5 individuals or less in accordance with Data Protection Act 1998

16. Tri-Service Strength¹ by Ethnic Origin² at 1 April 2012

| | Royal Navy | Army | RAF |
|-----------------------------------|---------------|----------------|---------------|
| Total | 35,540 | 104,250 | 40,000 |
| Ethnic Minorities | 1,230 | 10,300 | 770 |
| <i>Percentage Ethnic Minority</i> | 3.5% | 9.9% | 2.0% |
| White | 33,800 | 93,640 | 37,310 |
| Unknown | 520 | 310 | 1,920 |

1. UK Regular Forces comprises trained and untrained personnel and excludes Gurkhas, Full Time Reserve Service personnel and mobilised reservists.
 2. Ethnic minority percentage figures are based on those with a known ethnic origin. Percentages are calculated from unrounded data.
 P Denotes provisional. Data are provisional due to ongoing validation of data from the Joint Personnel Administration System
 Source: UK Armed Forces Quarterly Manning Report.