

Naval Service Quarterly Pocket Brief April 2011

Produced by DASA (Navy)
Building 33
Whale Island
Portsmouth
PO2 8ER



Telephone: 02392 547426
Internal: 93832 7426
Fax: 02392 547431
E-mail: navy@dasa.mod.uk

N.B. Sum of parts may not equal totals due to rounding

Due to the introduction of JPA to the Royal Naval Service during October 2006, all data are provisional and subject to revision.



2. Strength Against Liability at 1 April 2011

	Total Strength	Officers		Ratings	
		RN	RM	RN	RM
Regular Trained Strength	35,250	5,740	810	22,130	6,570
Full Time Reservists (FTRS) "Regular"	180	70	10	100	~
Liability ^{1,2}	35,700	5,840	770	22,520	6,560
Surplus/Deficit ³	(270)	(40)	40	(290)	10
Untrained Strength	2,410	810	60	780	760
Full Time Reservists (FTRS) "Non-Regular"	250	30	~	160	60
Total Regular Trained & Untrained Strength	37,660	6,550	860	22,910	7,330

	Total Trained and Untrained Strength	Trained Strength	FTRS "Regular"	Historic Liability ^{1,2}	Surplus/Deficit ³	Untrained Strength	FTRS "Non-Regular"
01-Apr-10	38,730	35,170	330	35,790	(290)	3,560	250
01-Apr-09	38,340	34,390	620	35,760	(750)	3,940	-
01-Apr-08	38,570	34,530	540	36,260	(1,190)	4,040	-
01-Apr-07	38,860	34,340	580	36,800	(1,880)	4,520	-

The term "liability" replaces the term "requirement"
The latest liability is 1_10 provided by DNPS
Surplus/Deficit = Trained Strength + FTRS "Regular" - Liability

5. Trained Regular Strength by Branch at 1 April 2011

RN Officers		RN Ratings ¹		RM Officers	
Warfare	2,800	Warfare XR	5,550	GD	800
Engineer	1,800	Warfare SM	860	Band	10
Logistics	580	Logistics	3,180	Career	~
Medical	360	Medical	760	Total	810
Dental	60	Engineering GS	5,100		
Chaplain	60	Engineering SM	2,150		
No Specialisation	-	Warfare Aviation	800		
Family	-	Air Engineering	3,540		
Total	5,660	Careers	-		
		Not Specified	-		
		Total	21,940		

RM Other Ranks	
GD	6,240
Band	330
Careers	-
Total	6,570

QARNNS Officers	80
QARNNS Ratings	180

Royal Navy Total	
Total Officers	6,550
Total Ratings	28,700
Total	35,250

¹ Artificers have been allocated to their appropriate Branches

CONTACTS

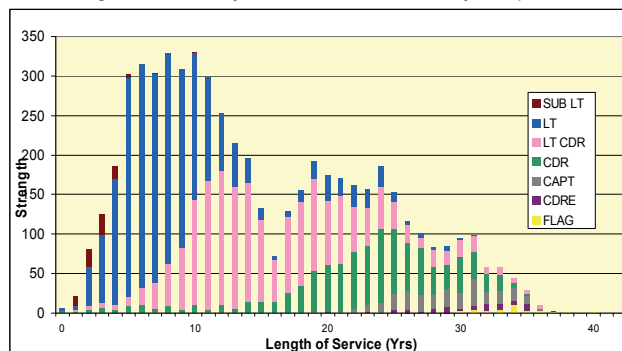
Produced by:

DASA (Navy)
Walcheren Building (33)
Whale Island
Portsmouth
Hampshire
PO2 8ER

DASA welcome feedback on our statistical products. If you have any comments or questions about this publication or about DASA statistics in general, you can contact us as follows:

Navy Peter Shute 023 92 547426
Email DASA-enquiries-mailbox@mod.uk
Visit our website at www.dasa.mod.uk

3. Trained Regular RN Officers by Paid Rank and LOS Since Entry at 1 April 2011



6. Total RN Regular Strength by Gender at 1 April 2011

Officers	Trained			Untrained		
	Male	Female	Total	Male	Female	Total
FLAG OFF	40	-	40	-	-	-
CDRE	70	-	70	-	-	-
CAPT	260	~	260	-	-	-
CDR	970	30	1,000	-	-	-
LT CDR	1,770	190	1,960	-	-	-
LT	1,960	370	2,320	200	30	220
SUB LT	70	20	80	410	70	480
MID	-	-	-	100	10	110
Total	5,130	610	5,740	700	110	810

Ratings						
	Male	Female	Total	Male	Female	Total
WO	620	30	650	-	-	-
WO2	560	~	560	-	-	-
CPO	3,190	180	3,370	-	-	-
PO	3,530	340	3,870	-	-	-
LDG	4,190	720	4,910	-	-	-
AB	7,390	1,370	8,760	700	80	780
Total	19,490	2,640	22,130	700	80	780

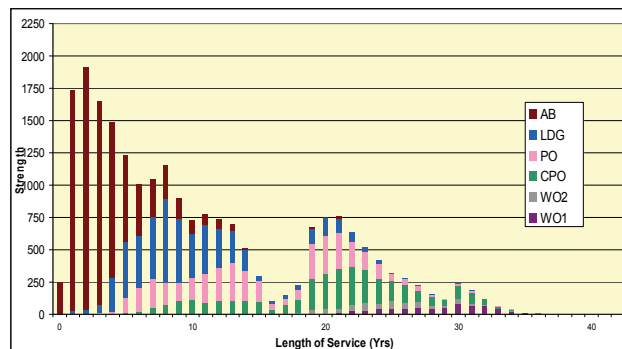
* Please note that ~ appears where there are 5 individuals or less due to the Data Protection Act 1998

1. Trained Manpower Accounts at 1 April 2011

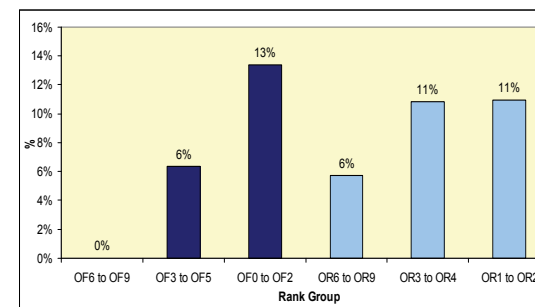
	Trained strength at 1 April 2010	GTS 2010/11	Entrants direct to trained strength 2010/11	Trained to untrained strength 2010/11	Trained wastage 2010/11	(Strength April point + inflow) - outflow	Trained strength at 1 April 2011
Officers	6,520	420	10	10	390	6,550	6,550
Ratings	28,650	2,440	80	30	2,440	28,700	28,700

GTS refers to Gains to Trained Strength and so does not include sideways entrants or trained FTRS intake. Trained FTRS intake are shown as entrants direct to the trained strength.

4. Trained Regular RN Ratings by Paid Rank and LOS Since Entry at 1 April 2011



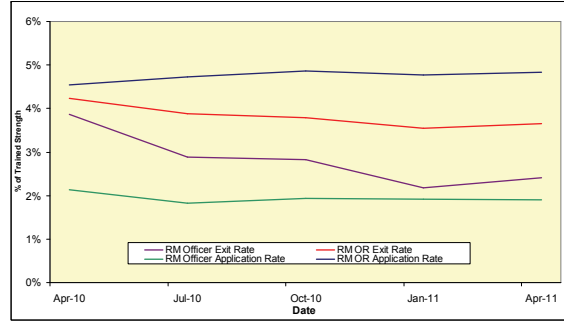
7. UK Regular Naval Service Females as a percentage of each paid rank group at 1 April 2011



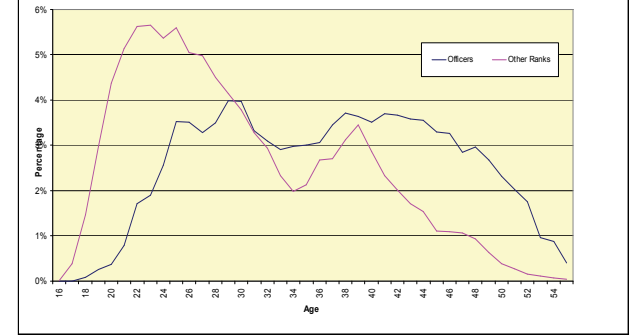
8. RN/RM Top Level Budget Trained Strength at 1 April 2011

Top Level Budget	
Navy Command	28,430
Navy Command Unallocated	28,170
Land Command	1,140
Air Command	540
Central	5,140
Centre	2,370
CJO	770
DE&S	2,000
Total	35,250

11. RM Voluntary Outflows and Application Rates as % of Trained Strength, 12 Months Ending 30 March 2011



14. Age Distribution - UK Regulars Naval Service 1 April 2011



9. Strength of FTRS and Activated Reservists at 1 April 2011

	Male	Female	Total
Officers			
Royal Navy	110	20	130
FTRS "Regular"	60	10	70
FTRS "Non-Regular"	20	10	30
Activated Reservists	30	~	40
Royal Marines	20	-	20
FTRS "Regular"	10	-	10
FTRS "Non-Regular"	~	-	~
Activated Reservists	10	-	10
Ratings			
Royal Navy	270	40	310
FTRS "Regular"	90	10	100
FTRS "Non-Regular"	140	20	160
Activated Reservists	40	10	50
Royal Marines	120	-	120
FTRS "Regular"	~	-	~
FTRS "Non-Regular"	60	-	60
Activated Reservists	60	-	60

12. Trained VO Applications and Exits 2010/11 to date

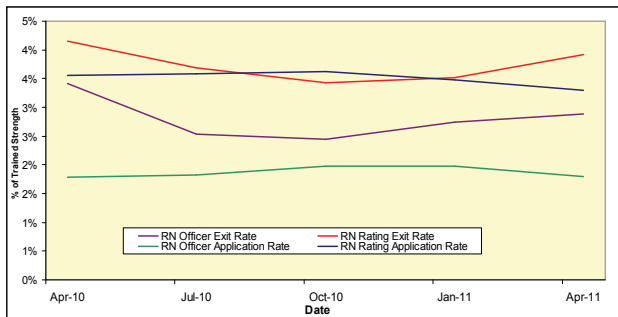
		Royal Navy		Royal Marine	
		Officers	Ratings	Officers	Ratings
VO Apps	Applications	100	740	20	310
	Withdrawals	~	30	-	20
VO Exits	Voluntary Outflows	160	880	20	240
	Time Expiry	150	490	20	100
	Other	30	610	~	120
	Total Exits	340	1,980	50	460

15. Intake for 2010/11 to date

	Intake
Total Officers	410
RN	340
From Ranks SUV/U	90
New Entrant/Re-entrant/From Another Service/From Long Term Absentee	260
RM	70
From Ranks SUV/U	20
New Entrant/Re-entrant/From Another Service/From Long Term Absentee	50
Total Ratings	2,300
RN	1,110
New Entrant/Re-entrant/From Another Service/From Long Term Absentee	1,110
Re-entrant (From Officer)	-
RM	1,190
New Entrant/Re-entrant/From Another Service/From Long Term Absentee	1,190
Re-entrant (From Officer)	-

This table includes entrants to both the untrained and trained strengths

10. RN Voluntary Outflows and Application Rates as % of Trained Strength, 12 Months Ending 30 March 2011



13. Average Age of Substantive Promotions during the 12 months ending 30 March 2011

Royal Navy	Average Age on Promotion	Royal Marines	Average Age on Promotion
LDG	27	CPL	28
PO	32	SGT	34
CPO	35	CSGT	39
WO2	42	WO2	41
WO1	44	WO1	42
LT	28	CAPTAIN RM	30
LT CDR	36	MAJOR	36
CDR	42	LT COLONEL	41
CAPTAIN	46	COLONEL	44
CDRE	48	BRIG	~
REAR ADMIRAL	50	MAJ-GENERAL	~

Please note that ~ appears where there are 5 individuals or less in accordance with Data Protection Act 1998

16. Tri-Service Strength¹ by Ethnic Origin² at 1 April 2011

	Royal Navy	Army	RAF
Total	37,660^P	106,230^P	42,460^P
Ethnic Minorities	1,300 ^P	10,100 ^P	840 ^P
Percentage Ethnic Minority	3.5% ^P	9.6% ^P	2.0% ^P
White	35,520 ^P	95,360 ^P	39,560 ^P
Unknown	840 ^P	770 ^P	2,060 ^P

1. UK Regular Forces comprises trained and untrained personnel and excludes Gurkhas, Full Time Reserve Service personnel and mobilised reservists.
 2. Ethnic minority percentage figures are based on those with a known ethnic origin. Percentages are calculated from unrounded data.
^P Denotes provisional. Data are provisional due to ongoing validation of data from the Joint Personnel Administration System
 Source: UK Armed Forces Quarterly Manning Report.