



Ministry
of Defence



Military Search and Rescue Quarterly Statistics

2013 Quarter 3

Published: 31 October 2013

Coverage

United Kingdom, Cyprus, Falkland Islands

Theme

Defence

Issued by

Defence Economics (Price Indices)
Ministry of Defence
Oak 0 W, Abbey Wood
Bristol BS34 8SJ

Internet

www.dasa.mod.uk

Enquiries

Press Office
020 721 83255

Responsible Statistician

Defence Economics (Price Indices) Head of Branch
030 679 32100
Def_Strat-Econ-ESES-PI-Hd@mod.uk

Other Statistical Enquiries

Defence Economics (Price Indices) Output Manager
030 679 34553
Def_Strat-Econ-ESES-PI-OutputMgr@mod.uk

Military SAR Statistics

This report covers military Search and Rescue (SAR) activities for 2013 Q3 (July to September). The report includes the number of incidents (i.e. the number of emergencies that military SAR units have responded to), the number of callouts (i.e. the number of units attending an incident) and the number of persons moved. There is a strong seasonal pattern to SAR callouts, with the peak activity occurring in Q3, corresponding to the warmer summer months when people are more active around the coast and mountains of the UK. The long term trend shows that SAR callouts peaked in 2009, and since then there has been a reduction in callout numbers, reverting towards the long term average. Over the past ten years, annual callout numbers have averaged 1,920. During 2012, there were 1,865 callouts.

Key Points

- Between July and September 2013, military Search and Rescue units attended 586 incidents resulting in 600 callouts (Table 1). This represents a 0.5% increase in incidents but 1.7% decrease in callouts compared to 2012 Q3.
- During 2013 Q3 there were 531 persons moved. This represents a 9.2% increase to the number of persons moved in 2012 Q3 compared to 2012 Q3. The number of persons moved in 2013 Q3 was high relative to the number of callouts in the quarter. This was the result of 22 incidents where there were 3 or more persons moved.
- For the last four quarters, the numbers of callouts has increased gradually. However, compared to Q3 in previous years, 2013 Q3 had the lowest number of callouts since 2005 Q3 (when there were 590 callouts). The number of callouts in 2013 Q3 (600) is 8.3% below the long term Q3 average of 654 (Table 2).
- The unit which attended the most callouts this quarter was RAF Valley, with 132 callouts (Table 4). HMS Gannet was the second highest, with 103 callouts. However, over the past five years Gannet has typically been the unit that attends the most incidents. This is due to the large number of incidents occurring within the vicinity of Gannet, such as those in the Scottish Highlands.
- Callouts on land and coast both show a strong seasonal pattern with the peak callout numbers generally highest in Q3 each year. Maritime callouts show less seasonality, with no clear peaks during the year. Over the past five years, the average number of quarterly maritime callouts has been 56, ranging from 36 to 102. The 2013 Q3 figure of 71 is therefore higher than the historical average (Figure 2).
- 99% of both callouts and persons moved during 2013 Q3 were to civilian incidents, and 1% to military incidents (Figure 3 and Figure 12).

What is included in this report

This report covers military SAR activities for 2013 Q3. It includes details of the activities of UK military SAR helicopters, RAF SAR helicopters operating in Cyprus and the Falkland Islands, and military MRT units. It also provides a summary of Maritime and Coastguard Agency (MCA) helicopter callouts. Additionally, military SAR reports are produced on a monthly and annual basis, available at the following links:

<http://www.dasa.mod.uk/index.php?pub=SAR-REPORT-MONTHLY>

<http://www.dasa.mod.uk/index.php?pub=SAR-REPORT-ANNUAL>

The report includes counts of the number of incidents, callouts and persons moved in the previous quarter. It also includes time series representations of quarterly incidents, callouts and persons moved since 2002 Q1.

Incidents are emergencies attended by Royal Navy or Royal Air Force units whose primary task is SAR, plus other military aircraft and ships that are available to the Aeronautical Rescue Coordination Centre (ARCC).

Each SAR unit attending an incident is described as a callout. An incident may result in one or more callouts.

Persons moved involves moving people from a hostile environment to a safe environment, or to a medical facility to receive urgent medical attention. It may also involve moving individuals between medical facilities at the request of the NHS.

The data source for this report is a weekly download from the ARCC database. Every incident recorded by the ARCC is included in these tables. Incident data from Cyprus and the Falklands is received on an ad hoc basis and may be incomplete, although it is rare that any data is received too late to be recorded in the report (if necessary, we revise the figures when we receive the data). All data is validated and checked by Defence Economics on receipt. Further details are available in the SAR Background Quality Report. This also includes details of internal and external users of the reports, including a summary of their requirements and how well Defence Economics' reports meet these requirements.

<http://www.dasa.mod.uk/applications/newWeb/www/apps/publications/pubViewFile.php?content=2100&date=2012-01-23&type=pdf&PublishTime=09:30:00>

Introduction

Military Search and Rescue

The military Search and Rescue (SAR) service exists primarily to assist military personnel in difficulty, although the majority of its work involves assisting civilians in distress, both on land and at sea (data on the split between civilian and military callouts is presented on page 4). SAR coverage for the United Kingdom and a large area of the surrounding sea is provided 24 hours a day and 365 days a year by the RAF and the Royal Navy.

UK Helicopters

The UK military SAR aeronautical coverage currently consists of RAF and Royal Navy SAR Sea King helicopters operating from eight locations around the UK (RAF Boulmer, RAF Lossiemouth, RAF Leconfield, RAF Valley, RAF Chivenor, RAF Wattisham, RNAS Culdrose and HMS Gannet). The military SAR force operates 24 hours a day. It provides coverage throughout the UK, and also covers an area extending from the Faroe Islands in the north, the English Channel in the south, about half way across the North Sea to the east and halfway across the Atlantic Ocean to the west.

The UK SAR helicopter coverage is coordinated by the Aeronautical Rescue Coordination Centre (ARCC) based at Kinloss Barracks.

Mountain Rescue Teams

The RAF has four mountain rescue teams (MRT), based at RAF Lossiemouth, RAF Leuchars, RAF Leeming and RAF Valley. The MRT units provide land rescues, primarily over the mountain regions of the UK. Military MRT units are coordinated by the ARCC, and often work in conjunction with helicopter units.

Overseas Helicopters

A SAR service is also provided by two overseas bases, at RAF Akrotiri in Cyprus and RAF Mount Pleasant in the Falkland Islands.

Further information on the UK's military SAR coverage is available at:

<http://www.raf.mod.uk/rafsearchandrescue/>

<http://www.royalnavy.mod.uk/Operations/Enduring-Operations/UK/Search-and-Rescue>

Other Search and Rescue

In addition to the RAF and Royal Navy, a number of non-military organisations provide SAR coverage throughout the UK. The activities of most of these non-military organisations is outside the scope of this report, however background information on some of the organisations involved is provided below.

Maritime and Coastguard Agency

In addition to the eight military aeronautical SAR units, additional aeronautical SAR coverage is provided by four Maritime and Coastguard Agency (MCA) helicopter units. Although these are not part of the military SAR service, the MCA helicopters are coordinated by the ARCC at Kinloss Barracks, to provide integrated coverage across the UK. A summary of callouts for this quarter is provided in this report.

In addition to its aeronautical coverage, the MCA provides maritime SAR coverage throughout the UK. Details of maritime SAR callouts are not included in this report. Further information is available at:

<http://www.dft.gov.uk/mca/mcga07-home/emergencyresponse/mcga-searchandrescue.htm>

RNLI

The RNLI is a charitable organisation providing 24 hour lifeboat SAR coverage around the coast of the UK and Republic of Ireland, along with a seasonal lifeguard service.

<http://www.rnli.org.uk/>

Mountain Rescue Teams

A number of voluntary Mountain Rescue services operate throughout the UK. These often work in conjunction with the military SAR service. Details of non-military Mountain Rescue callouts are not included in this report. Further information can be found at:

<http://www.mountain.rescue.org.uk/>

<http://www.mrcofs.org/>

Air Ambulance

Air Ambulance services operate throughout the UK, providing emergency medical assistance. Further information is available at:

<http://www.airambulanceassociation.co.uk/>

1. Search and Rescue Summary

This section provides a summary of SAR activity for this quarter, covering both helicopter and mountain rescue units for the UK and Overseas.

Table 1 shows the incidents, callouts and persons moved for 2013 Q3. July was the month with the most SAR callouts, incidents and persons moved this quarter, with 231 callouts, 229 incidents and 211 persons moved. The number of callouts, incidents and persons moved decreased gradually for August and September. July is often the month with the highest number of callouts during Q3 each year, reflecting the general seasonal pattern of increased callouts during the summer months.

Table 2 shows the quarterly incidents, callouts and persons moved since 2003 Q3. Through much of the past decade, the number of callouts has generally increased year-on-year. However, the number of callouts peaked in 2009, and since then there has been a return to the long term average. The number of callouts in 2013 Q3 was 0.5% (3 callouts) higher than during 2012 Q3.

Figure 1 provides a graphical representation of the numbers in Table 2. SAR activity shows a strong seasonal pattern. The busiest quarter is always Q3, corresponding to the warmer summer months. This is due to more people being active around the coastline and in the mountain regions of the UK.

Table 3 shows the location and category of callouts in 2013 Q3. Maritime incidents are those that occur more than 3 nautical miles from the high tide line. Coastal incidents are those occurring between the high tide line and 3 nautical miles out to sea. All other incidents are classed as land. Land incidents can include those occurring at inland waterways, such as lakes or rivers.

Table 3 also shows the category of the callout. This records the type of environment to which the callout is made. The categories are 'aero' for incidents involving aeronautical accidents, 'ship' to casualties located on a ship or large boat, 'leisure craft' for casualties on a smaller vessel such as a yacht or a dinghy, 'rig' for casualties on an oil rig, 'beacon' or 'flare' for callouts responding to these types of distress signals, and 'person' for an individual not on any of the aforementioned structures. The majority of callouts are generally categorised as 'person'.

Figure 2 shows the locations of callouts over the past five years. The majority of callouts are usually on land, averaging around 68% of all callouts over the past five years. Both land and coast callouts show a seasonal pattern, with the peaks occurring in the summer months of Q3. Maritime callouts only show a very slight seasonal pattern, as these callouts are generally in response to people taken sick on a boat, which does not depend on the season.

1. Search and Rescue Summary (continued)

Figure 3 shows the current quarter's split between callouts to civilian casualties and those to military casualties. Although the military SAR service exists primarily to assist military personnel, the vast majority of their work involves assisting civilian casualties. During 2013 Q3, 99% of callouts were to civilians.

Figure 4 shows UK callouts over the past 5 years grouped according to the categories shown on page 22 of this report. Essentially the 'Rescue-Type' callouts are those where a person was moved without the need for an extensive search, 'Search-Type' callouts are those where a search was performed due to an unknown casualty location, 'Assistance-Type' are those where the unit provided assistance without moving a casualty, and 'Other' are those where the SAR unit was ultimately not needed.

The majority of callouts are generally 'Rescue-Type', averaging around 57% of all callouts over the past five years. These show a seasonal pattern, with the peak generally coming in Q3 each year. Callouts grouped as 'Other' also show a seasonal pattern. There is less seasonality in the 'Search-Type' and 'Assistance-Type' callouts, although these quarterly series are based on relatively low numbers of callouts.

Figure 5 shows the requesting organisations for UK callouts for 2013 Q3. These are the organisations that initially requested the assistance of a military SAR unit. Figure 6 shows a time series over the past five years.

The coastguard requested 47% of UK callouts during 2013 Q3, more than the police or ambulance services. The coastguard often has the highest number of requests, although more so during the summer months. The number of coastguard requests is highly seasonal, with the peak in Q3 corresponding to more people being active around coastal areas. There is less of a seasonal pattern to police or ambulance requested callouts. These type of callouts are generally responding to road traffic accidents, missing persons, or transfers between hospitals, which broadly occur equally throughout the year.

Table 1 UK & Overseas Callouts, Incidents and Persons Moved, 2013 Q3

| | Total Callouts | UK Helicopters | Overseas Helicopters | Mountain Rescue | Incidents | Persons Moved |
|-----------------|-----------------------|-----------------------|-----------------------------|------------------------|------------------|----------------------|
| 2013 Jul | 231 | 225 | 3 | 3 | 229 | 211 |
| Aug | 211 | 204 | 1 | 6 | 205 | 184 |
| Sep | 158 | 153 | - | 5 | 152 | 136 |
| 2013 Q3 | 600 | 582 | 4 | 14 | 586 | 531 |

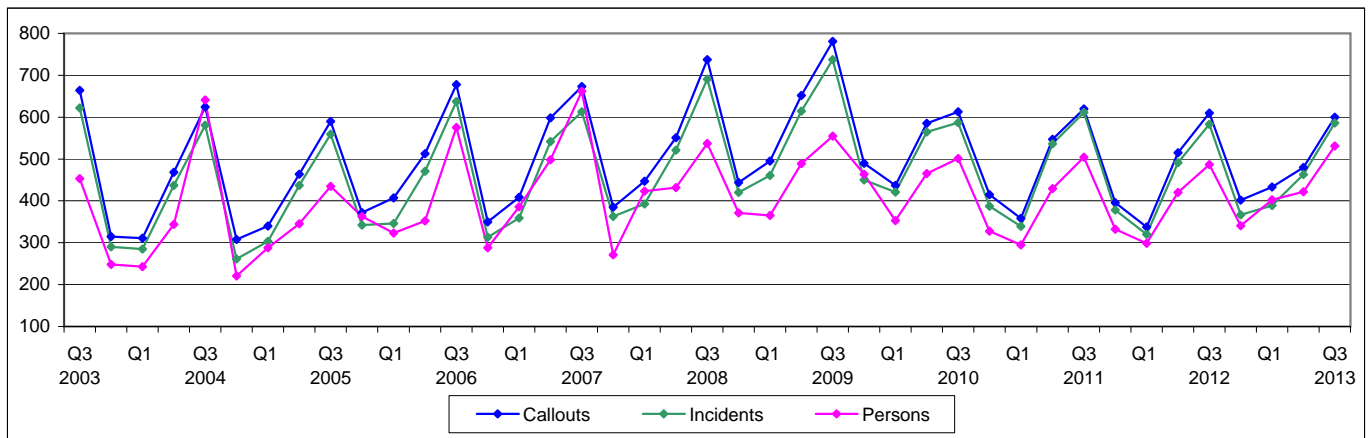
1. Search and Rescue Summary

Table 2 UK & Overseas Incidents, Callouts and Persons Moved, 2003 Q3 to 2013 Q3

| | Incidents | | | Callouts | | | Persons Moved | | |
|---------|-----------|-----|----------|----------|-----|----------|---------------|-----|----------|
| | All | UK | Overseas | All | UK | Overseas | All | UK | Overseas |
| 2003 Q3 | 622 | 603 | 19 | 664 | 633 | 31 | 453 | 446 | 7 |
| Q4 | 290 | 260 | 30 | 315 | 283 | 32 | 248 | 222 | 26 |
| 2004 Q1 | 285 | 277 | 8 | 311 | 303 | 8 | 243 | 235 | 8 |
| Q2 | 437 | 418 | 19 | 468 | 445 | 23 | 344 | 332 | 12 |
| Q3 | 581 | 557 | 24 | 624 | 595 | 29 | 641 | 627 | 14 |
| Q4 | 261 | 252 | 9 | 308 | 295 | 13 | 221 | 218 | 3 |
| 2005 Q1 | 303 | 292 | 11 | 340 | 328 | 12 | 288 | 275 | 13 |
| Q2 | 437 | 418 | 19 | 464 | 442 | 22 | 345 | 337 | 8 |
| Q3 | 559 | 545 | 14 | 590 | 573 | 17 | 435 | 425 | 10 |
| Q4 | 342 | 329 | 13 | 372 | 359 | 13 | 363 | 347 | 16 |
| 2006 Q1 | 346 | 334 | 12 | 407 | 394 | 13 | 323 | 310 | 13 |
| Q2 | 471 | 451 | 20 | 513 | 488 | 25 | 352 | 340 | 12 |
| Q3 | 637 | 612 | 25 | 678 | 651 | 27 | 575 | 560 | 15 |
| Q4 | 313 | 306 | 7 | 350 | 342 | 8 | 288 | 253 | 35 |
| 2007 Q1 | 359 | 339 | 20 | 409 | 387 | 22 | 386 | 370 | 16 |
| Q2 | 542 | 524 | 18 | 598 | 572 | 26 | 498 | 488 | 10 |
| Q3 | 613 | 588 | 25 | 673 | 640 | 33 | 662 | 650 | 12 |
| Q4 | 363 | 352 | 11 | 385 | 374 | 11 | 271 | 259 | 12 |
| 2008 Q1 | 393 | 361 | 32 | 447 | 412 | 35 | 423 | 304 | 119 |
| Q2 | 521 | 494 | 27 | 551 | 519 | 32 | 432 | 412 | 20 |
| Q3 | 691 | 680 | 11 | 737 | 724 | 13 | 537 | 530 | 7 |
| Q4 | 420 | 406 | 14 | 444 | 428 | 16 | 371 | 361 | 10 |
| 2009 Q1 | 461 | 436 | 25 | 495 | 470 | 25 | 365 | 334 | 31 |
| Q2 | 614 | 602 | 12 | 652 | 637 | 15 | 489 | 484 | 5 |
| Q3 | 737 | 725 | 12 | 781 | 768 | 13 | 555 | 552 | 3 |
| Q4 | 450 | 428 | 22 | 490 | 462 | 28 | 464 | 440 | 24 |
| 2010 Q1 | 421 | 402 | 19 | 437 | 418 | 19 | 353 | 337 | 16 |
| Q2 | 565 | 553 | 12 | 585 | 570 | 15 | 465 | 462 | 3 |
| Q3 | 587 | 574 | 13 | 613 | 597 | 16 | 501 | 491 | 10 |
| Q4 | 387 | 372 | 15 | 415 | 398 | 17 | 328 | 315 | 13 |
| 2011 Q1 | 339 | 319 | 20 | 358 | 337 | 21 | 295 | 283 | 12 |
| Q2 | 536 | 523 | 13 | 547 | 533 | 14 | 429 | 418 | 11 |
| Q3 | 611 | 596 | 15 | 620 | 605 | 15 | 504 | 487 | 17 |
| Q4 | 378 | 363 | 15 | 396 | 381 | 15 | 332 | 313 | 19 |
| 2012 Q1 | 320 | 311 | 9 | 338 | 329 | 9 | 299 | 292 | 7 |
| Q2 | 491 | 486 | 5 | 515 | 510 | 5 | 420 | 417 | 3 |
| Q3 | 583 | 579 | 4 | 610 | 606 | 4 | 487 | 481 | 6 |
| Q4 | 367 | 357 | 10 | 402 | 392 | 10 | 341 | 332 | 9 |
| 2013 Q1 | 389 | 380 | 9 | 433 | 424 | 9 | 403 | 393 | 10 |
| Q2 | 463 r | 457 | 6 r | 480 r | 474 | 6 r | 422 r | 415 | 7 r |
| Q3 | 586 | 582 | 4 | 600 | 596 | 4 | 531 | 527 | 4 |

The number of callouts, incidents and persons moved figure for Overseas has been revised due to additional data being received for June 2013.

Figure 1 UK & Overseas Callouts, Incidents and Persons Moved, 2003 Q3 to 2013 Q3



1. Search and Rescue Summary

Table 3 UK & Overseas Callouts by Location and Category, 2013 Q3

| | Aero | Ship | Leisure Craft | Rig | Beacon | Flares | Person | Other | Total |
|--------------|----------|-----------|---------------|-----------|----------|----------|------------|----------|------------|
| Land | 5 | - | - | - | - | - | 370 | - | 375 |
| Coast | 2 | 7 | 23 | - | - | 1 | 121 | - | 154 |
| Maritime | 1 | 35 | 15 | 20 | - | - | - | - | 71 |
| Total | 8 | 42 | 38 | 20 | - | 1 | 491 | - | 600 |

Figure 2 UK & Overseas Callouts by Location, 2008 Q3 to 2013 Q3

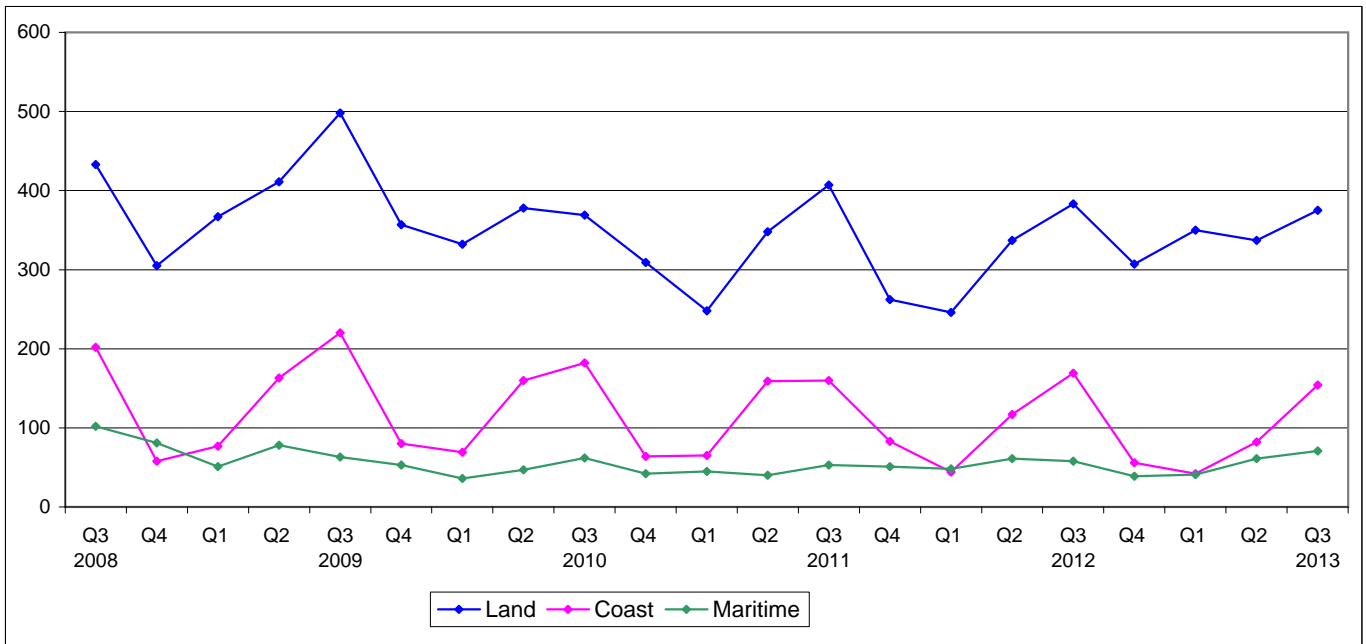
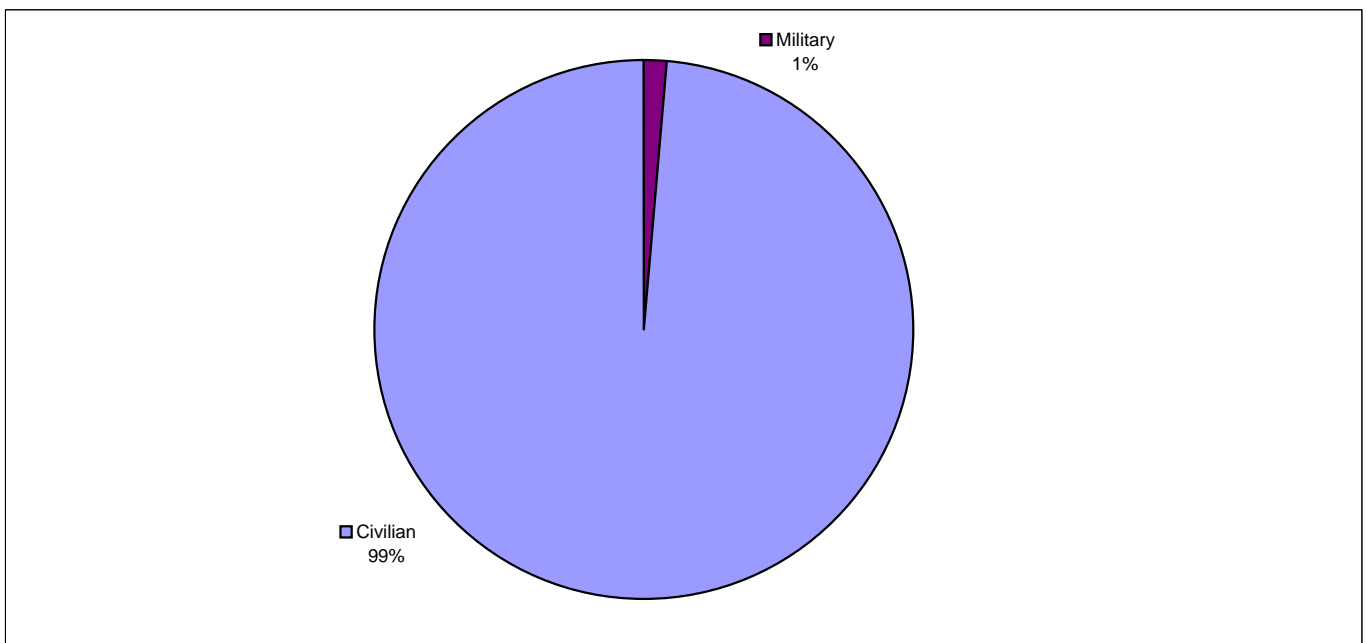
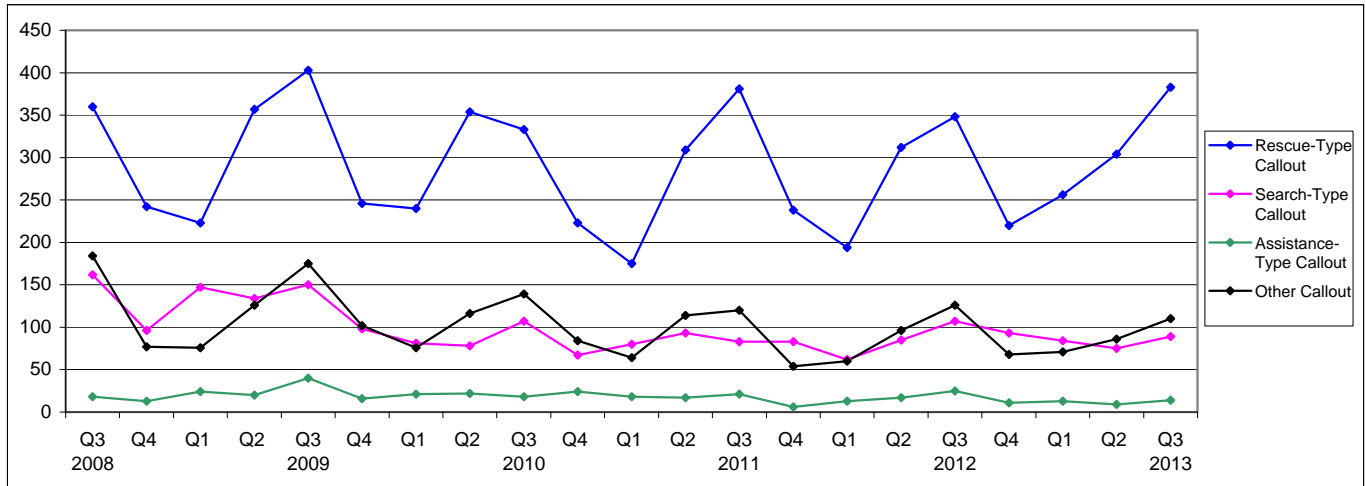


Figure 3 UK & Overseas Callouts by Civilian or Military, 2013 Q3



1. Search and Rescue Summary

Figure 4 UK Callouts by Callout Grouping, 2008 Q3 to 2013 Q3



1. For definitions of callout groupings see SAR Definitions on page 22

Figure 5 UK Callouts by Requesting Organisation, 2013 Q3

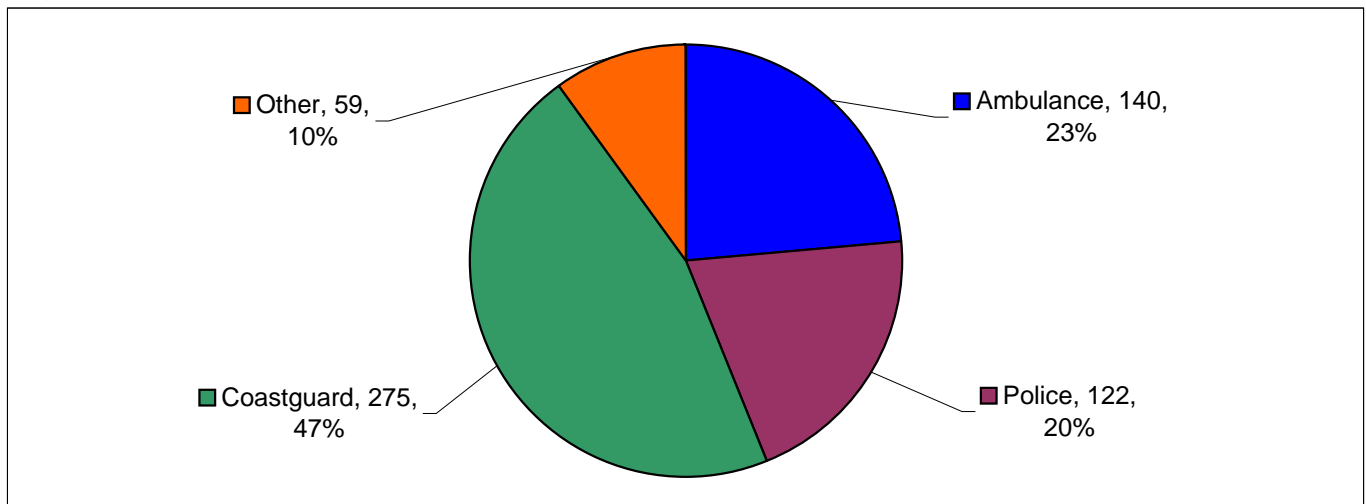
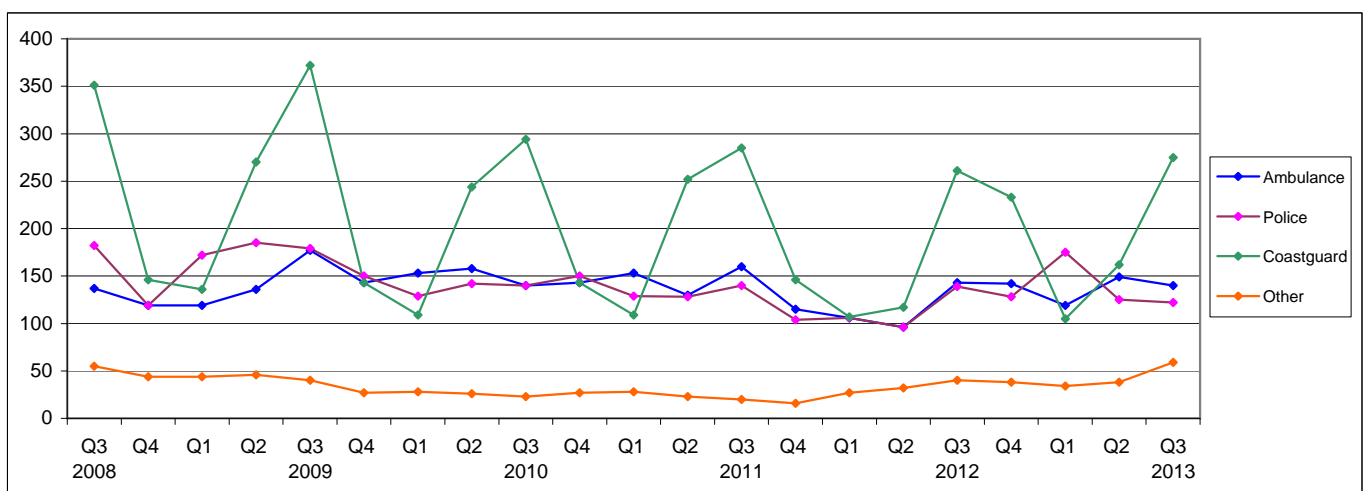


Figure 6 UK Callouts by Requesting Organisation, 2008 Q3 to 2013 Q3



2. The requesting organisation is determined using an automated lookup function which searches for key text within the organisations' name. Within the 'Other' category, there may be a limited number of callouts by either Ambulance, Police or Coastguard due to the automated algorithm used.

2. Search and Rescue Helicopter Callouts

This section focuses on SAR helicopter callouts, excluding Mountain Rescue Teams.

Table 4 presents the number of callouts in 2013 Q3 by both unit and assistance type. The units responding to the most callouts in 2013 Q3 were RAF Valley and HMS Gannet, with 132 and 103 callouts respectively. However, Gannet is typically the unit which responds to the most callouts, as its coverage area includes the Highlands region of Scotland, where many people go walking and climbing.

The assistance type with the most callouts during 2013 Q3 was Medrescue, with 286 callouts. This represents just under half of all helicopter callouts during the quarter. Medrescues involve moving an injured person to a medical facility, and generally account for a large proportion of the work of the SAR units.

Figures 7a, 7b and 7c show the number of callouts by unit over the past five years. The units responding to the highest number of callouts tend to be Gannet (averaging 91 per quarter over the past five years), Valley (averaging 75) and Chivenor (averaging 74), which generally cover the Scottish Highlands, Dartmoor National Park and the Devon/Dorset coastline, and Snowdonia National Park respectively.

Most units show some seasonality in their callout numbers, although this is most pronounced for Chivenor and Culdrose (both covering the south west of England) and Valley (covering north Wales). These regions typically see a large increase of activity during the summer months, both around the coast and inland.

Figures 8a to 8h show the number of callouts for each helicopter unit over the past five years by the callout groupings shown on page 22 of this report. For most units 'Rescue-Type' tends to be the largest grouping, although there is some seasonal variation. Most units tend to follow the overall pattern of peak activity in Q3, although this is most pronounced for the 'Rescue-Type' callouts.

Table 5 presents flying times for each helicopter unit. Total flying hours is a measure of the total time spent flying whilst on SAR callouts during the quarter, while average flying hours is the average time spent flying per callout during the quarter. The average time to casualty is the average time between departure from the base and arrival at the incident. All timings are expressed in hours and minutes. SAR units are held at a readiness of 15 minutes between 08.00 and 22.00, and a readiness of 45 minutes between 22.00 and 08.00.

The unit with the highest number of flying hours this quarter was HMS Gannet, which was also one of the busiest unit in terms of callout numbers. Similarly, the unit with the second highest number of flying hours this quarter was RAF Valley, the busiest unit in terms of callout numbers. The unit with the highest average flying hours this quarter was RAF Lossiemouth.

Figures 9a to 9c show flying hours by unit over the past five years. There is usually a strong correlation between callouts numbers and total flying hours, although this can be affected by significant callouts which can often involve many hours searching. Lossiemouth and Gannet often have high flying hours, as these units typically respond to callouts in remote regions in Scotland. These can often take longer to reach than callouts within some of the other units' response areas.

2. Search and Rescue Helicopter Callouts

Table 4 UK & Overseas Callouts by Unit and Assistance Type, 2013 Q3

| | RAF Boulmer | RAF Lossiemouth | RAF Leconfield | RAF Valley | RAF Chivenor | RAF Wattisham | RAF UK Total | RNAS Culdrose | HMS Gannet | RN Total | UK Other | UK Total | Cyprus | Falklands | Overseas Total |
|-----------------------|-------------|-----------------|----------------|------------|--------------|---------------|--------------|---------------|------------|------------|----------|------------|----------|-----------|----------------|
| Rescue | 1 | 4 | 1 | 13 | 6 | 1 | 26 | 2 | 2 | 4 | - | 30 | - | - | - |
| Search-Rescue | 2 | 6 | - | 1 | 2 | 1 | 12 | - | 3 | 3 | - | 15 | - | - | - |
| Medrescue | 31 | 23 | 20 | 71 | 45 | 14 | 204 | 42 | 38 | 80 | - | 284 | - | 2 | 2 |
| Search-Medrescue | 1 | 5 | 1 | 2 | 1 | 1 | 11 | - | 6 | 6 | - | 17 | - | - | - |
| Medtransfer | - | 2 | - | 8 | 5 | 5 | 20 | 17 | 23 | 40 | - | 60 | - | 2 | 2 |
| Recovery | 1 | - | - | 1 | - | - | 2 | - | - | - | - | 2 | - | - | - |
| Search-Recovery | - | 2 | - | - | - | - | 2 | - | 3 | 3 | - | 5 | - | - | - |
| Transfer | - | - | - | - | - | - | - | - | - | - | - | - | - | - | - |
| Civil Aid | - | - | - | - | - | - | - | - | - | - | - | - | - | - | - |
| Search | 3 | 7 | 2 | 7 | 3 | 5 | 27 | 5 | 8 | 13 | - | 40 | - | - | - |
| Top Cover | 1 | 1 | - | 1 | - | 2 | 5 | 1 | 1 | 2 | - | 7 | - | - | - |
| Assist | 1 | - | - | - | 1 | - | 2 | - | 3 | 3 | - | 5 | - | - | - |
| Search-Assist | - | 3 | - | 1 | - | - | 4 | - | 1 | 1 | - | 5 | - | - | - |
| Recalled | 3 | 4 | 4 | 16 | 12 | 8 | 47 | 8 | 7 | 15 | - | 62 | - | - | - |
| Not Required | 2 | 2 | 5 | 8 | 5 | 6 | 28 | 2 | 6 | 8 | - | 36 | - | - | - |
| False Alarm | - | - | 2 | 1 | 1 | 2 | 6 | - | - | - | - | 6 | - | - | - |
| Hoax | - | - | - | - | 1 | - | 1 | - | 1 | 1 | - | 2 | - | - | - |
| Precaution | - | - | - | - | - | - | - | - | - | - | - | - | - | - | - |
| Aborted | 1 | - | - | 2 | - | - | 3 | - | 1 | 1 | - | 4 | - | - | - |
| Search-Aborted | - | - | 1 | - | 1 | - | 2 | - | - | - | - | 2 | - | - | - |
| Total Callouts | 47 | 59 | 36 | 132 | 83 | 45 | 402 | 77 | 103 | 180 | - | 582 | - | 4 | 4 |

Figure 7a UK & Overseas Callouts for Boulmer, Lossiemouth & Leconfield, 2008 Q3 to 2013 Q3

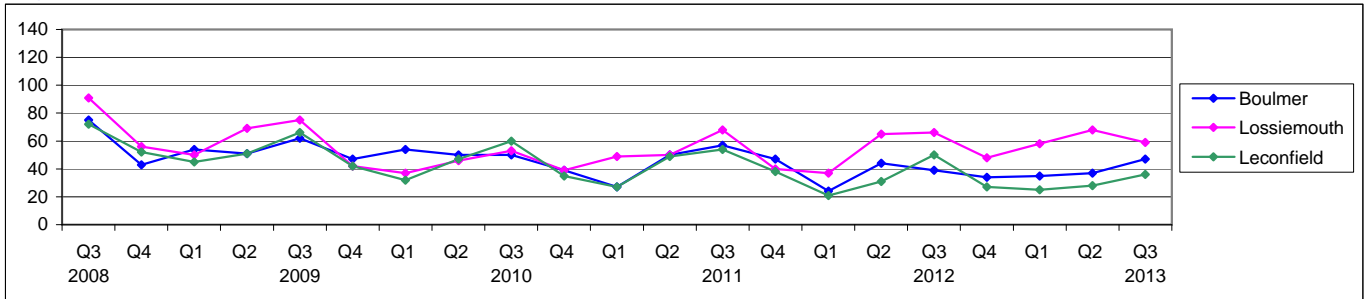


Figure 7b UK & Overseas Callouts for Valley, Chivenor & Wattisham, 2008 Q3 to 2013 Q3

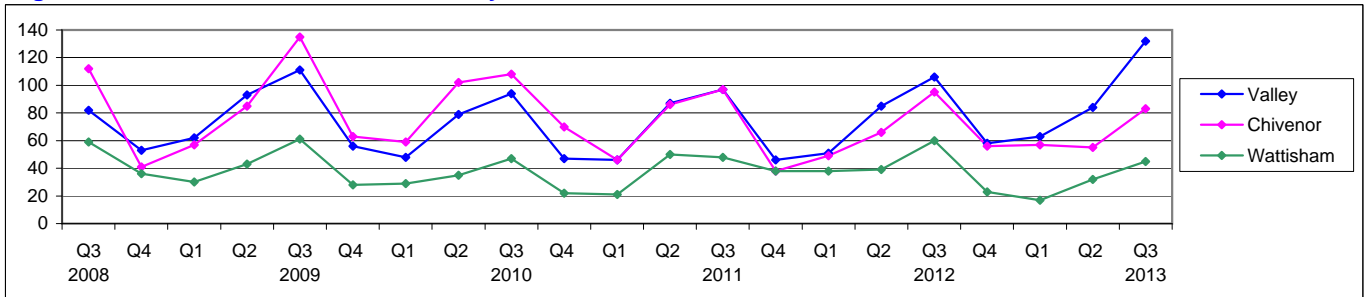
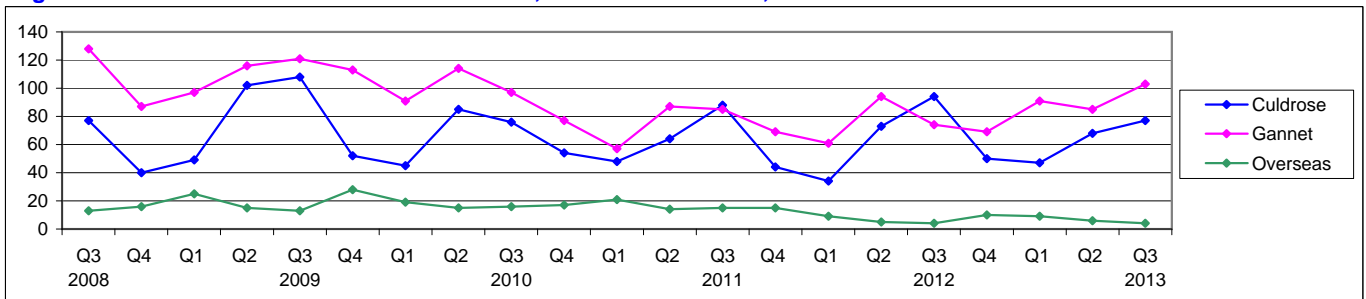


Figure 7c UK & Overseas Callouts for Culdrose, Gannet & Overseas, 2008 Q3 to 2013 Q3



2. Search and Rescue Helicopter Callouts

Figure 8a Callouts for Boulmer by Callout Grouping, 2008 Q3 to 2013 Q3

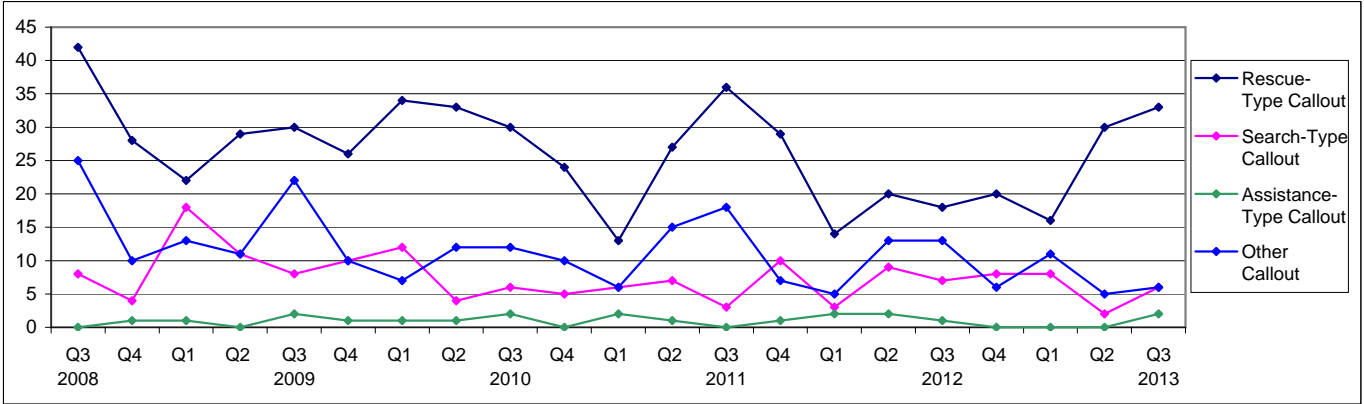


Figure 8b Callouts for Lossiemouth by Callout Grouping, 2008 Q3 to 2013 Q3

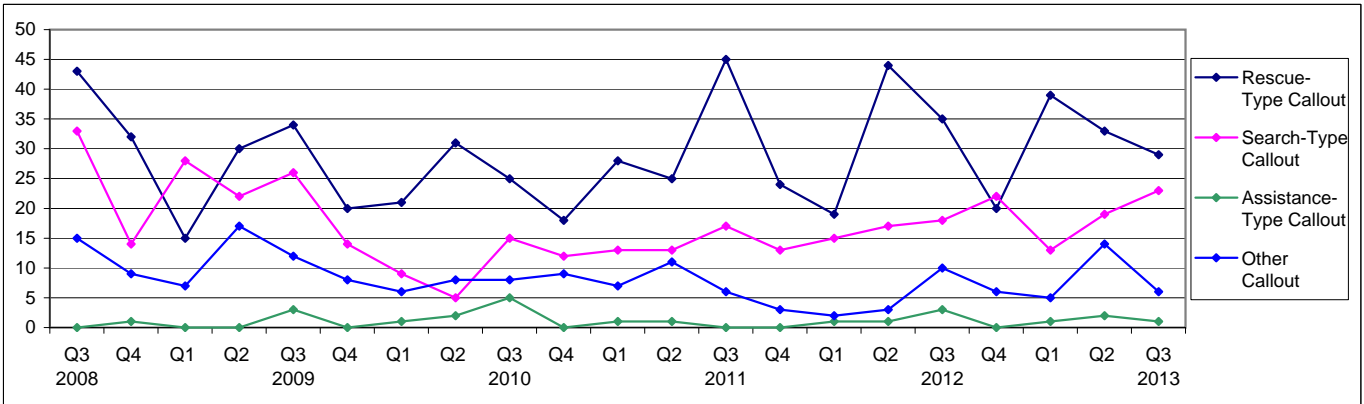


Figure 8c Callouts for Leconfield by Callout Grouping, 2008 Q3 to 2013 Q3

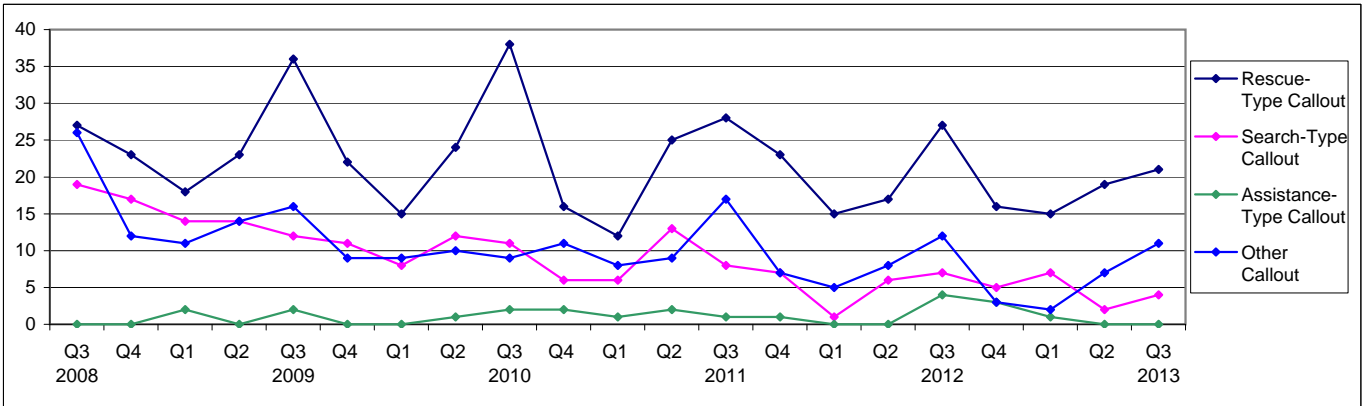
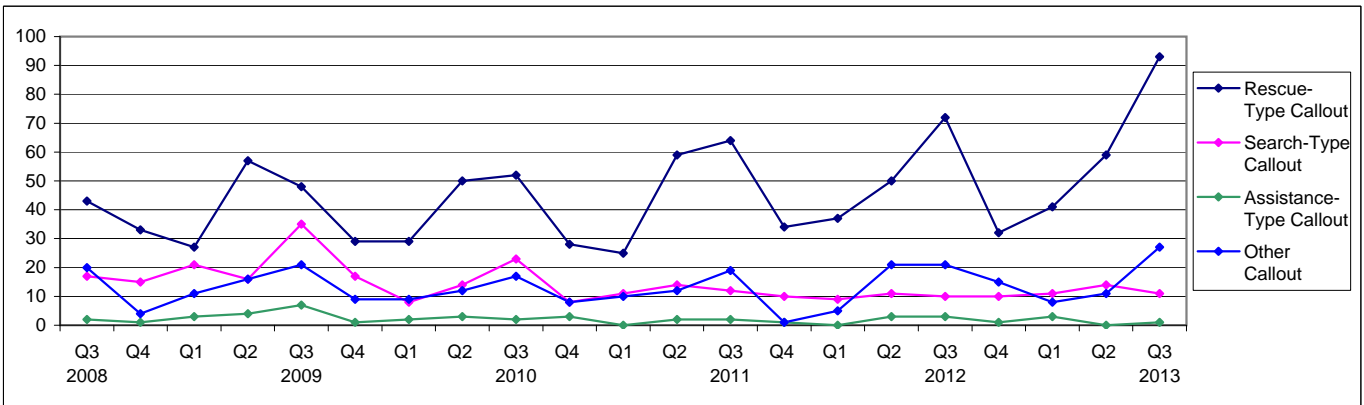


Figure 8d Callouts for Valley by Callout Grouping, 2008 Q3 to 2013 Q3



2. Search and Rescue Helicopter Callouts

Figure 8e Callouts for Chivenor by Callout Grouping, 2008 Q3 to 2013 Q3

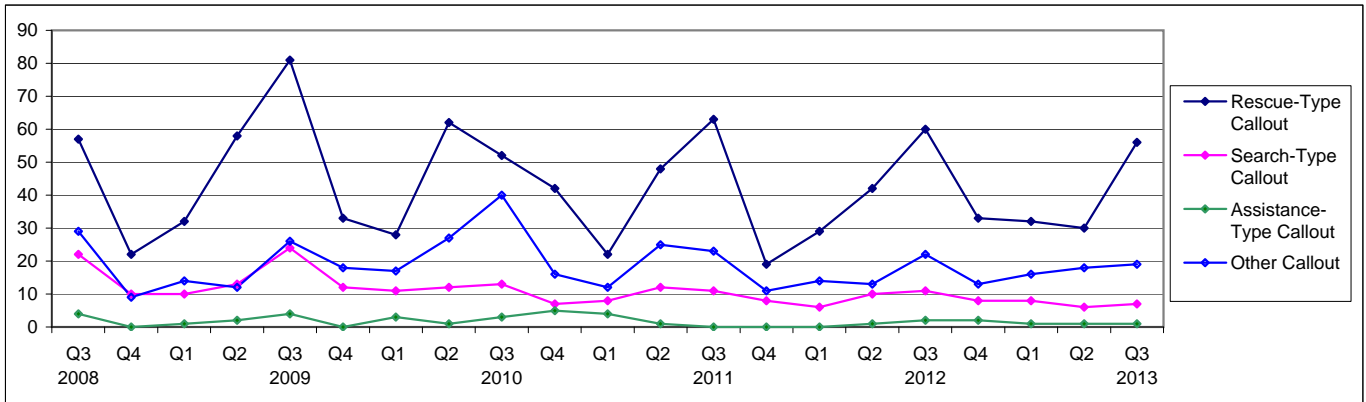


Figure 8f Callouts for Wattisham by Callout Grouping, 2008 Q3 to 2013 Q3

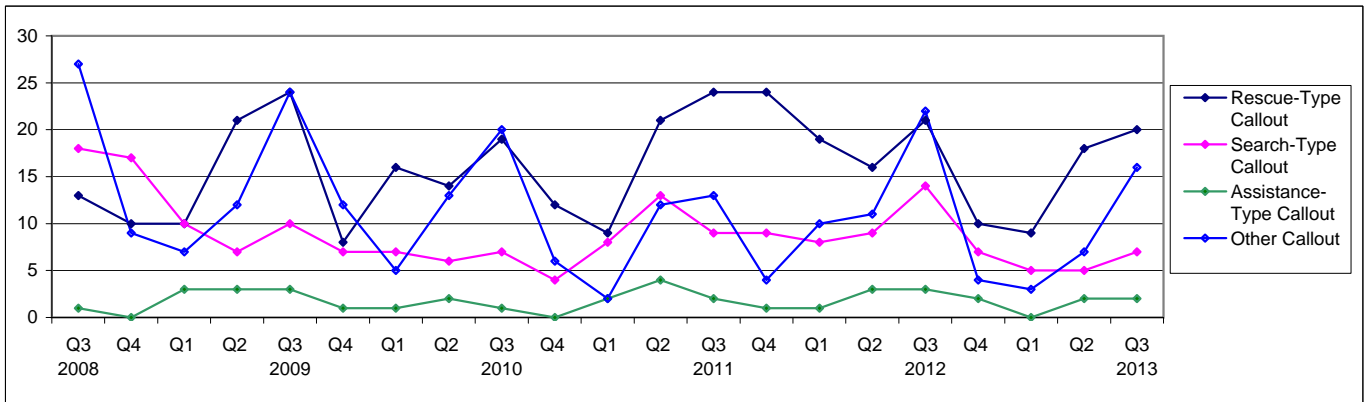


Figure 8g Callouts for Culdrose by Callout Grouping, 2008 Q3 to 2013 Q3

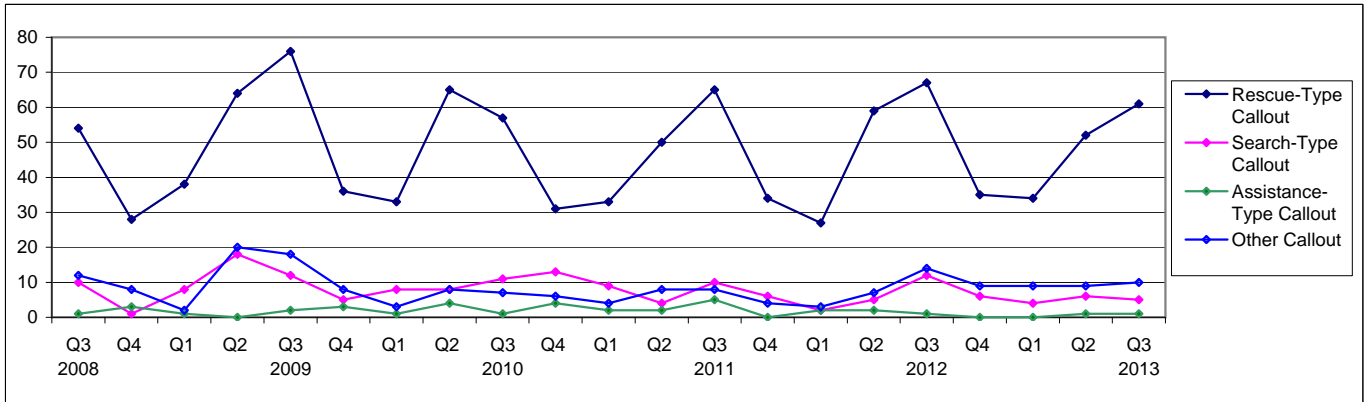
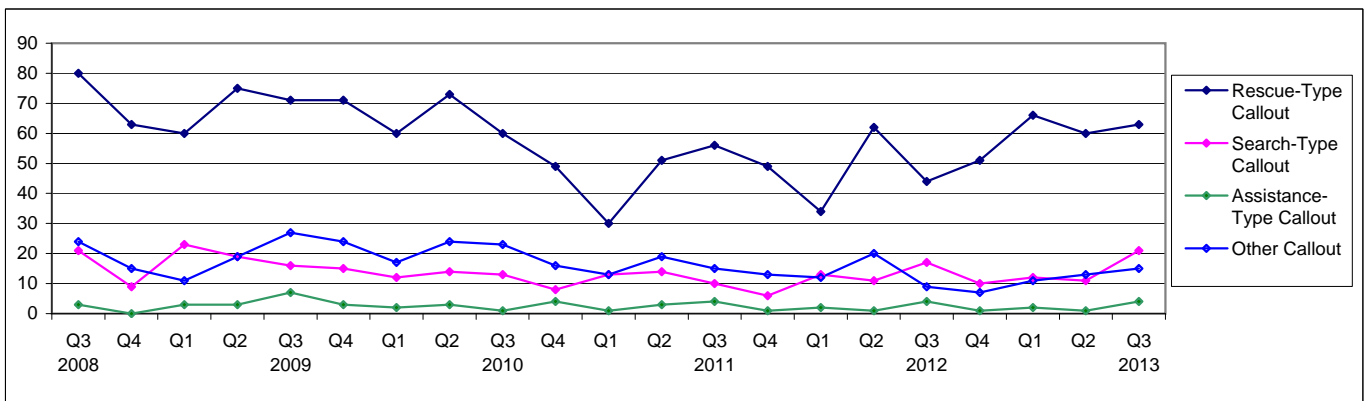


Figure 8h Callouts for Gannet by Callout Grouping, 2008 Q3 to 2013 Q3



2. Search and Rescue Helicopter Callouts

Table 5 UK & Overseas Flying Hours by Unit, 2013 Q3

| | Total Flying Hours ³ | Average Flying Hours ³ | Average time to casualty ^{3,4} | Average distance from base (nm) |
|----------------------------|---------------------------------|-----------------------------------|---|---------------------------------|
| RAF Boulmer | 87.51 | 1.52 | 0.27 | 52 |
| RAF Lossiemouth | 137.03 | 2.19 | 0.35 | 62 |
| RAF Leconfield | 41.40 | 1.09 | 0.17 | 39 |
| RAF Valley | 173.41 | 1.19 | 0.18 | 30 |
| RAF Chivenor | 117.21 | 1.25 | 0.16 | 33 |
| RAF Wattisham | 72.42 | 1.37 | 0.30 | 51 |
| RNAS Culdrose | 104.60 | 1.22 | 0.18 | 33 |
| HMS Gannet | 193.30 | 1.53 | 0.31 | 53 |
| UK Other Helicopters | - | - | - | - |
| Cyprus | - | - | - | - |
| Falklands | 9.54 | 2.28 | 0.51 | 63 |
| Overseas Other Helicopters | - | - | - | - |
| | 938.42 | 1.36 | 0.23 | 42 |

3. Times are expressed in Hours and Minutes.

4. Time to casualty is the time from departure from base to arrival at incident.

Figure 9a Flying Hours for Boulmer, Lossiemouth & Leconfield, 2008 Q3 to 2013 Q3

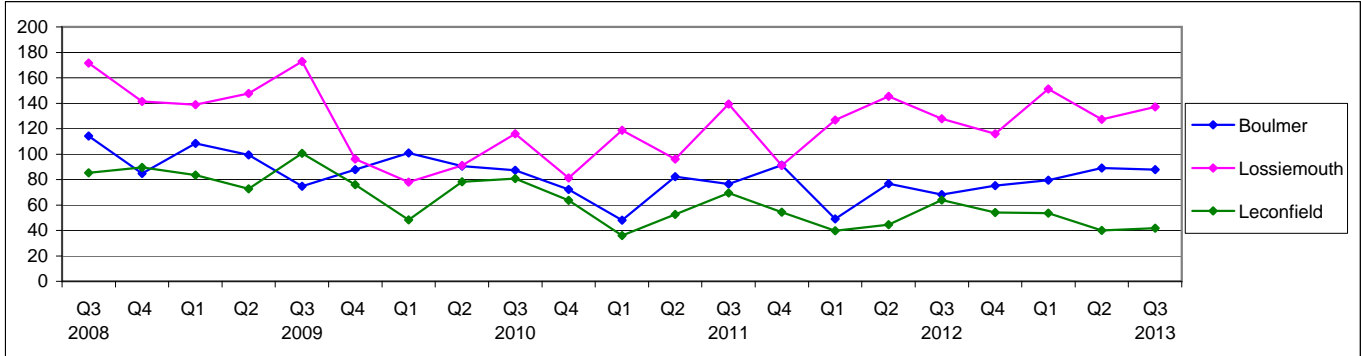


Figure 9b Flying Hours for Valley, Chivenor & Wattisham, 2008 Q3 to 2013 Q3

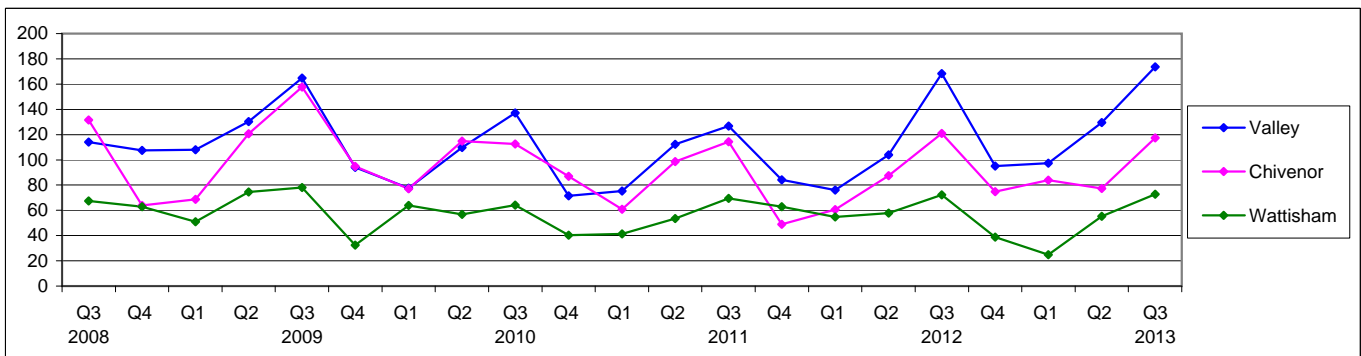
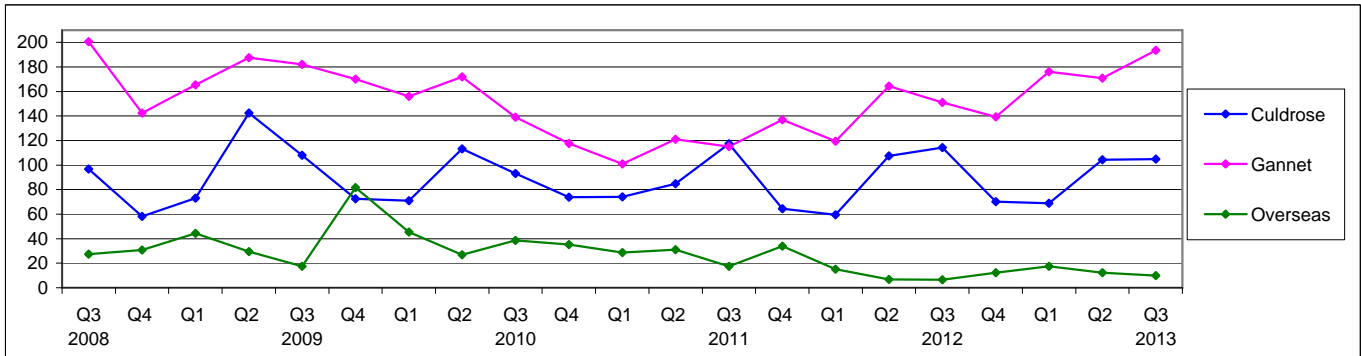


Figure 9c Flying Hours for Culdrose, Gannet & Overseas, 2008 Q3 to 2013 Q3



3. Persons Moved

This section provides a summary of the persons moved during SAR callouts this quarter.

[Table 6](#) shows the persons moved by unit and assistance type for 2013 Q3, for UK and Overseas helicopter units. A single callout can involve moving persons under more than one assistance type. For example, if two persons were moved from a hostile environment, one being injured and the other not, this would be recorded as one Medrescue and one Rescue.

The number of persons moved is generally strongly correlated with the number of callouts. A callout typically involves moving 1, 2 or no persons. However, occasionally there are large incidents with many persons moved.

[Table 6](#) shows that during 2013 Q3, 64% of the persons moved were for Medrescues, and 20% were for Rescues. The next highest group was Medtransfers, representing only 6% of the quarterly total. These involve moving people between recognised medical facilities. The number of Medtransfers was highest for Valley, Chivenor, Culdrose and Gannet. The Culdrose and Gannet units are regularly involved in moving people onto the mainland for medical treatment, from the Scilly Isles and the Scottish islands respectively.

[Figures 10a to 10c](#) show the number of persons moved by unit over the past five years. During this period Gannet averaged the highest number of persons moved each quarter (81), followed by Valley (72), Chivenor (59) and Culdrose (57). These units are located in areas which typically show high demand for SAR assistance.

[Table 7](#) shows the number of persons moved in 2013 Q3 by location, for all SAR units (including Mountain Rescue Teams). As with callouts, most of the persons moved this quarter were from incidents on land.

[Figure 11](#) shows persons moved by location over the past five years. In any given quarter over this period over half of the persons moved were from land-based incidents, with the average being 73%. There is a seasonal pattern to both the land and coast numbers, with the peak occurring in the summer months during Q3. The number of persons rescued from a maritime environment (typically people taken ill on a ship) does not show a large degree of seasonal fluctuation.

[Table 8](#) shows the number of persons moved this quarter by category. Over 87% of persons moved are categorised as 'Person', i.e. an individual not associated with any of the other structures, such as ships, leisure crafts, rigs or aeroplanes.

[Figure 12](#) shows the split between civilian and military persons moved over the past five years. Typically around 95% of persons moved are civilians. However, 99% of both callouts and persons moved during 2013 Q3 were to civilian incidents, and 1% to military incidents.

3. Persons Moved

Table 6 Persons Moved by Unit and Assistance Type, UK & Overseas helicopters, 2013 Q3

| | RAF Boulmer | RAF Lossiemouth | RAF Leconfield | RAF Valley | RAF Chivenor | RAF Wattisham | RAF UK Total | RNAS Culdrose | HMS Gannet | RN Total | UK Other | UK Total | Cyprus | Falklands | Overseas Total |
|----------------------|-------------|-----------------|----------------|------------|--------------|---------------|--------------|---------------|------------|------------|----------|------------|----------|-----------|----------------|
| Rescue | 1 | 7 | 3 | 42 | 15 | 2 | 70 | 5 | 11 | 16 | - | 86 | - | - | - |
| Search-Rescue | 3 | 9 | - | 2 | 2 | 1 | 17 | - | 9 | 9 | - | 26 | - | - | - |
| Medrescue | 32 | 25 | 21 | 80 | 52 | 17 | 227 | 42 | 39 | 81 | - | 308 | - | 2 | 2 |
| Search-Medrescue | 1 | 6 | 1 | 2 | 1 | 2 | 13 | - | 8 | 8 | - | 21 | - | - | - |
| Medtransfer | - | 2 | - | 8 | 5 | 7 | 22 | 18 | 26 | 44 | - | 66 | - | 2 | 2 |
| Recovery | 1 | - | - | 1 | 1 | - | 3 | 1 | - | 1 | - | 4 | - | - | - |
| Search-Recovery | - | 2 | - | - | - | - | 2 | - | 3 | 3 | - | 5 | - | - | - |
| Transfer | - | - | - | - | - | - | - | - | - | - | - | - | - | - | - |
| Total Persons | 38 | 51 | 25 | 135 | 76 | 29 | 354 | 66 | 96 | 162 | - | 516 | - | 4 | 4 |

Figure 10a UK & Overseas Persons Moved for Boulmer, Lossiemouth & Leconfield, 2008 Q3 to 2013 Q3

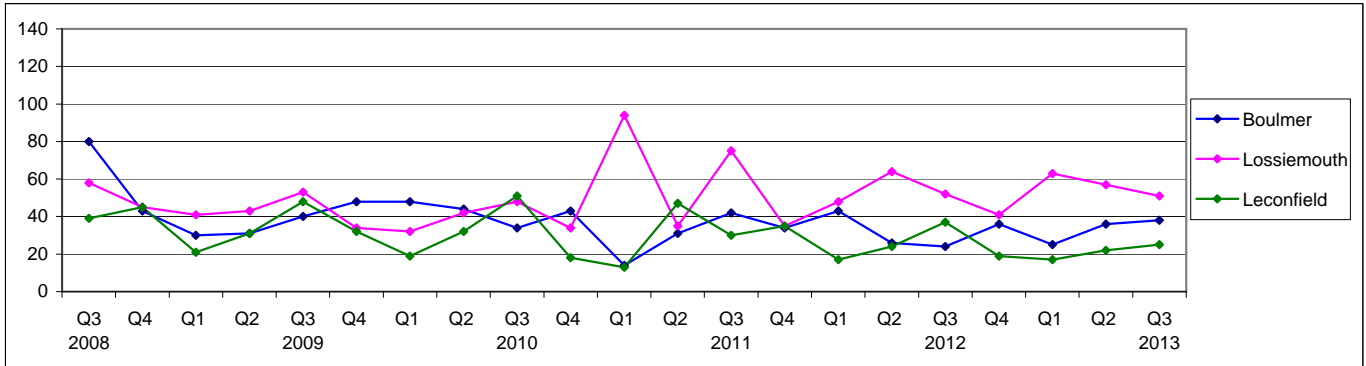


Figure 10b UK & Overseas Persons Moved for Valley, Chivenor & Wattisham, 2008 Q3 to 2013 Q3

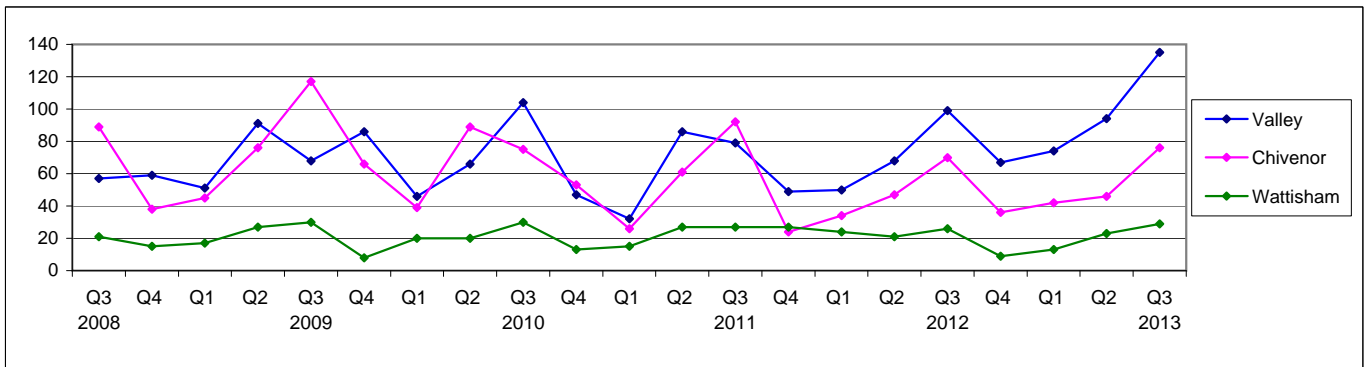
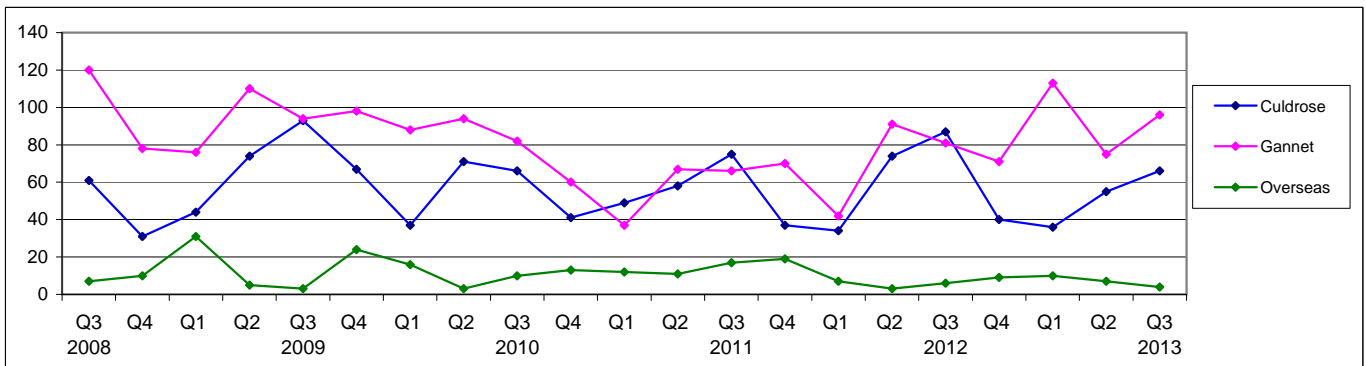


Figure 10c UK & Overseas Persons Moved for Culdrose, Gannet & Overseas, 2008 Q3 to 2013 Q3



3. Persons Moved

Table 7 UK & Overseas Persons Moved by Location and Assistance Type, 2013 Q3

Persons by Callout Location

| | Land | Coast | Maritime | Total |
|----------------------|------------|-----------|-----------|------------|
| Rescue | 54 | 34 | - | 88 |
| Search-Rescue | 23 | 2 | 1 | 26 |
| Medrescue | 215 | 54 | 48 | 317 |
| Search-Medrescue | 12 | 8 | 1 | 21 |
| Medtransfer | 68 | - | - | 68 |
| Recovery | 3 | 1 | - | 4 |
| Search-Recovery | 6 | - | 1 | 7 |
| Transfer | - | - | - | - |
| Total Persons | 381 | 99 | 51 | 531 |

Table 8 UK & Overseas Persons Moved by Category and Assistance Type, 2013 Q3

Persons by Callout Category

| | Aero | Ship | Leisure Craft | Rig | Person | Other | Total |
|--------------|----------|-----------|---------------|-----------|------------|----------|------------|
| | - | 1 | 7 | - | 80 | - | 88 |
| | - | - | 1 | - | 25 | - | 26 |
| | - | 25 | 14 | 16 | 262 | - | 317 |
| | 1 | 1 | - | - | 19 | - | 21 |
| | - | - | - | - | 68 | - | 68 |
| | - | - | - | - | 4 | - | 4 |
| | - | - | 1 | - | 6 | - | 7 |
| | - | - | - | - | - | - | - |
| Total | 1 | 27 | 23 | 16 | 464 | - | 531 |

Figure 11 UK & Overseas Persons Moved by Location, 2008 Q3 to 2013 Q3

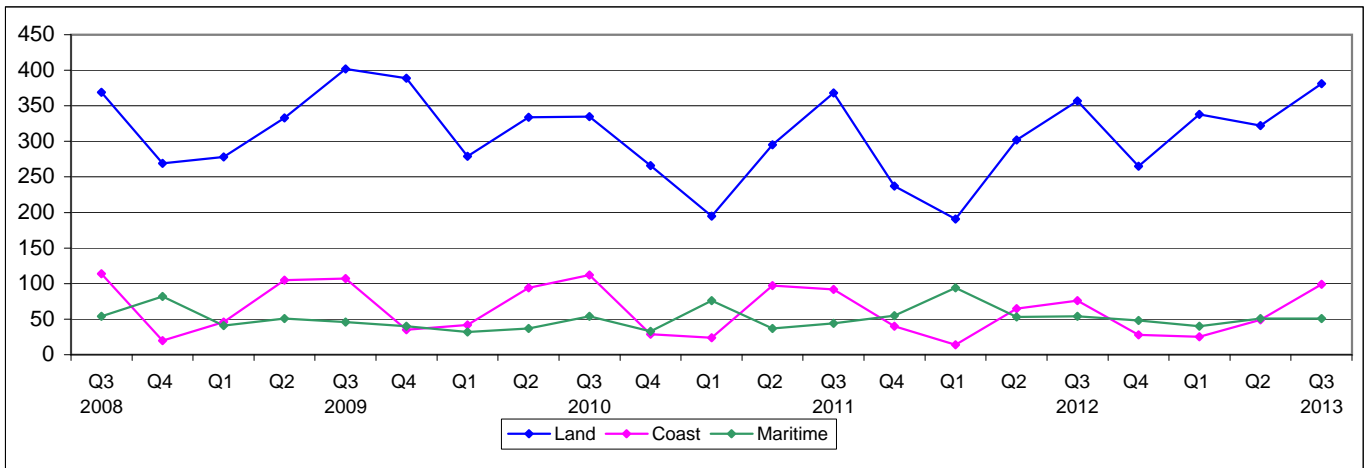
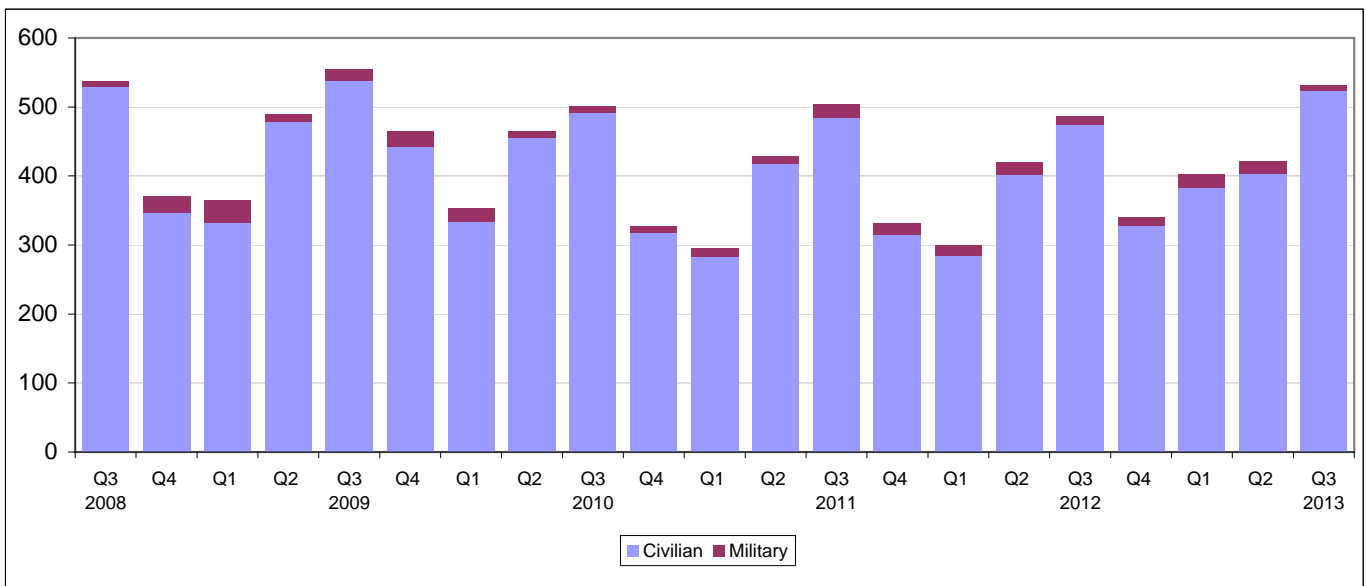


Figure 12 UK & Overseas Persons Moved by Civilian or Military, 2008 Q3 to 2013 Q3



4. Other Search and Rescue

This section focuses on the non-helicopter units within the military SAR service, and also gives a summary of the Maritime & Coastguard Agency's (MCA) helicopter callouts for this quarter.

Table 9 shows the callouts, persons moved and man hours for each military Mountain Rescue Team (MRT) during 2013 Q3. The number of persons moved by each MRT unit tends to be relatively low. MRT units often work in conjunction with helicopter units, to help locate casualties in difficult terrain. If the casualty is then transferred out by the helicopter unit, the helicopter unit will be associated with the person moved in the report, rather than the MRT unit.

The MRT man hours are the total time spent working on a callout by all members of the unit. The total man hours this quarter was 1,490, which is above the average over the past five years of around 1,641 hours per quarter.

Figures 13a to 13d show the callouts and man hours for each MRT unit over the past five years. These tend to be fairly volatile series, with some large changes from one quarter to the next. This is primarily due to the small numbers of callouts, which can vary considerably from month to month, and the large range of activities undertaken by MRT units which result in considerable variability in man hours required. There is little appreciable seasonality, although the MRT units can often be at their busiest during the winter months. This is often the result of walkers in mountain regions being caught by rapidly changing weather during the colder months, and consequently need rescuing.

Figure 14 present military fixed wing callouts. Prior to March 2010, fixed wing coverage was provided by Nimrod aircraft operating out of RAF Kinloss. The Nimrods were withdrawn from service in March 2010. Since this time, occasional fixed wing coverage is provided by civilian contractors operating Cessna aircraft. As this is not part of the military SAR service, the activities of these contractor aircraft is outside the scope of this report.

Table 10 shows MCA callouts for this quarter. Lee on Solent and Portland were the units with the highest number of callouts in 2013 Q3, with 66 and 60 respectively. These statistics are validated and provided by the MCA. They are subject to change and are outside the scope of National Statistics.

Figure 15 shows MCA callouts over the past five years. As with the military SAR callouts, there is a seasonal pattern, with the peak callout numbers occurring over the summer.

4. Other Search and Rescue

Table 9 MRT Callouts, Persons Moved and Man Hours by Unit, 2013 Q3

| | Callouts | Persons | Man Hours |
|--------------------------|-----------|-----------|-------------|
| Lossiemouth ⁵ | 6 | 3 | 1271 |
| Leeming | 1 | 1 | 60 |
| Leuchars | 1 | 1 | 10 |
| Valley | 6 | 6 | 149 |
| Other | - | - | - |
| Total | 14 | 11 | 1490 |

5. Formerly MRT Kinloss

Figure 13a Callouts and Man Hours for MRT Lossiemouth/Kinloss, 2008 Q3 to 2013 Q3

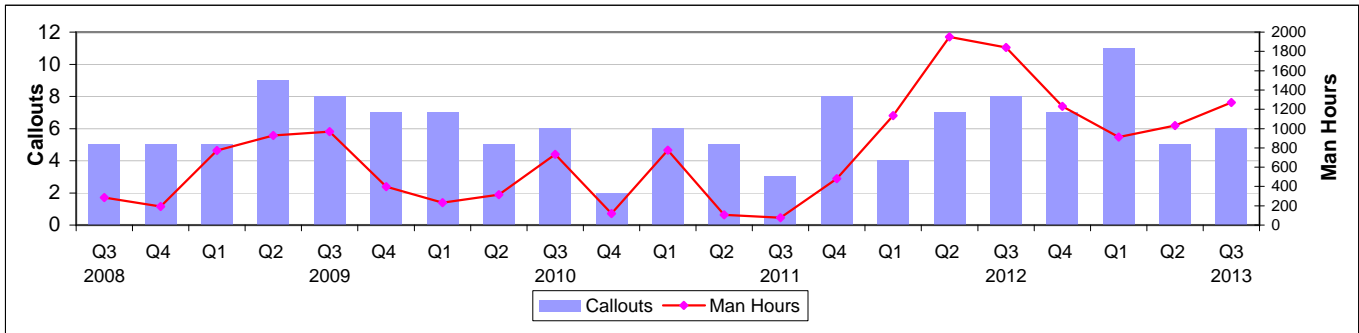


Figure 13b Callouts and Man Hours for MRT Leeming, 2008 Q3 to 2013 Q3

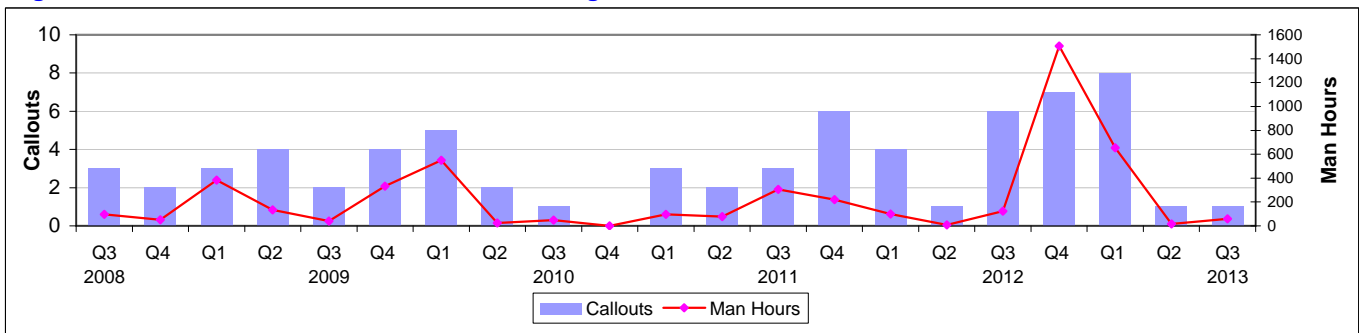


Figure 13c Callouts and Man Hours for MRT Leuchars, 2008 Q3 to 2013 Q3

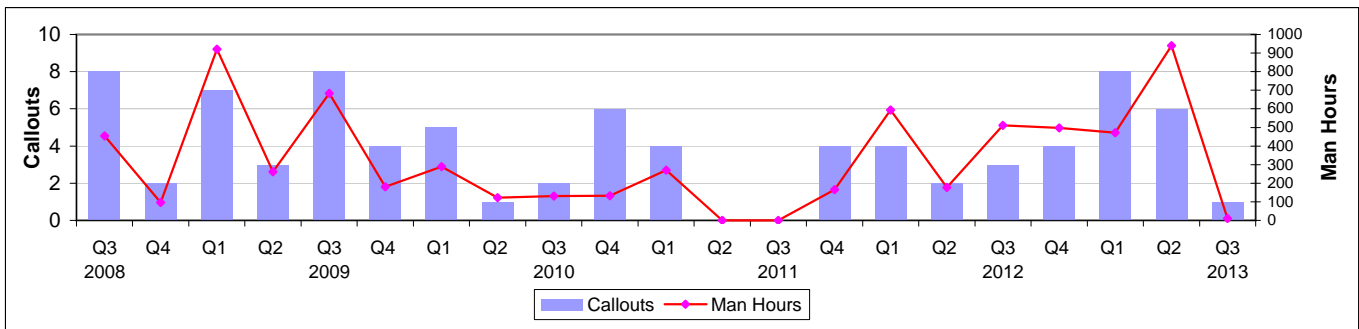
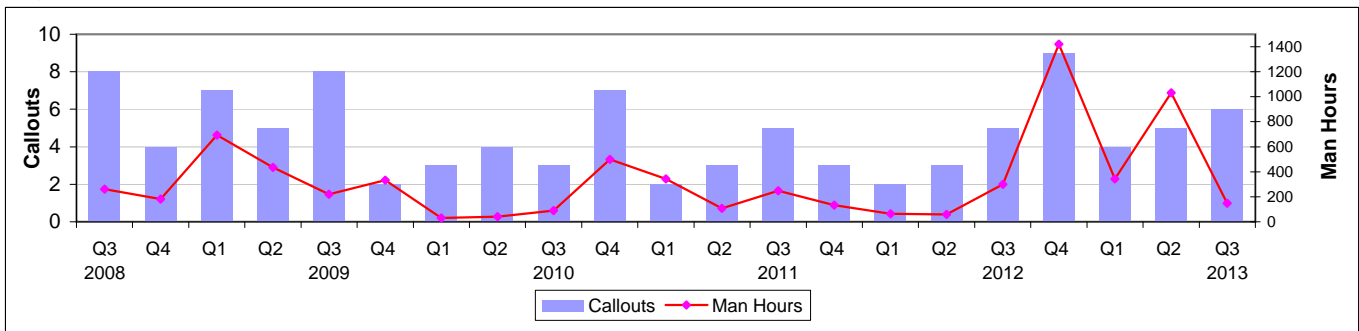


Figure 13d Callouts and Man Hours for MRT Valley, 2008 Q3 to 2013 Q3



4. Other Search and Rescue

Figure 14 Fixed Wing Callouts, 2008 Q3 to 2013 Q3

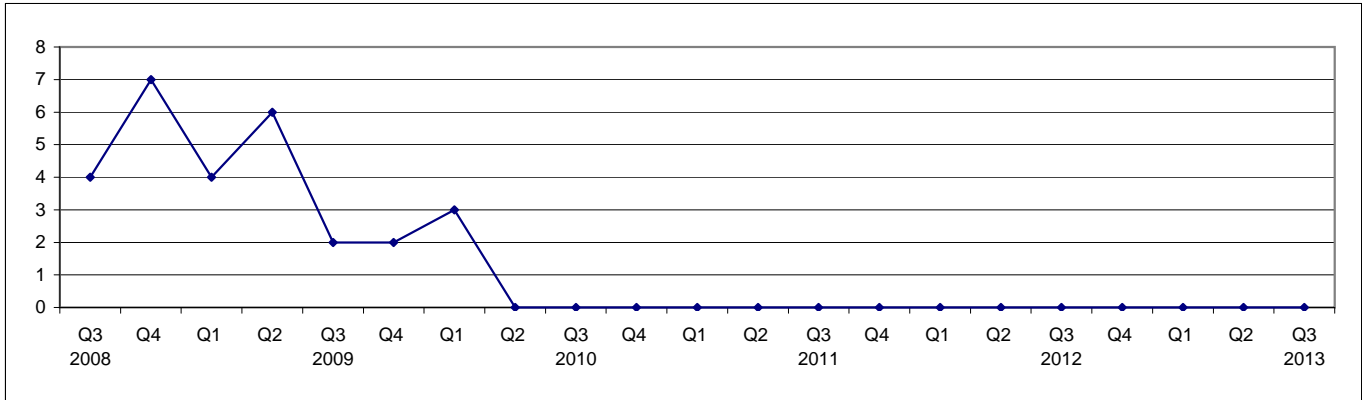
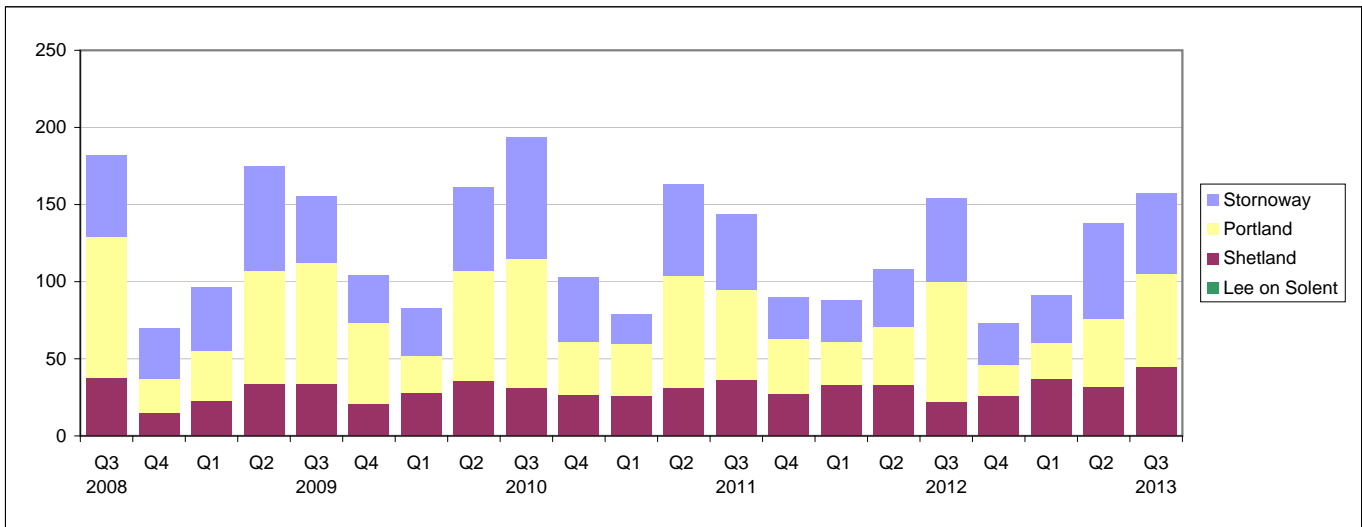


Table 10 Maritime & Coastguard Agency Helicopters Callouts by Unit, 2013 Q3

| | Lee on Solent | Shetland | Portland | Stornoway | Total |
|--------------|---------------|-----------|-----------|-----------|------------|
| July | 31 | 17 | 30 | 20 | 98 |
| August | 16 | 13 | 20 | 11 | 60 |
| September | 19 | 15 | 10 | 21 | 65 |
| Total | 66 | 45 | 60 | 52 | 223 |

Source: Maritime & Coastguard Agency.

Figure 15 Maritime and Coastguard Agency Helicopter Callouts by Unit, 2008 Q3 to 2013 Q3



Source: Maritime & Coastguard Agency.

Please note that the figures in Table 10 and Figure 15 are provisional and subject to audit. They are provided by other bodies and are not designated as National Statistics. The Department has not assessed the quality of these statistics. They are published to provide extra context.

5. UK Search and Rescue Geography

The maps over the following four pages show the locations of military SAR callouts during this quarter.

Each unit has an area over which they typically respond to incidents. Sea King helicopters have a maximum endurance of 6 hours, giving a usual radius of actions of around 300 nautical miles from base.

Boulmer typically respond to callouts in the Lake District, the north east coast of England, and into south east Scotland. Valley typically respond to incidents in north Wales and in the Irish Sea. Wattisham provides coverage over the south east of England.

Chivenor typically provides coverage around south west England and south Wales. Leconfield provides coverage throughout the Midlands and the east coast of England. Lossiemouth provides coverage over the north of Scotland.




Gannet's typical range is throughout the central and western areas of Scotland. Culdrose provide coverage throughout Cornwall and out into the Atlantic Ocean.

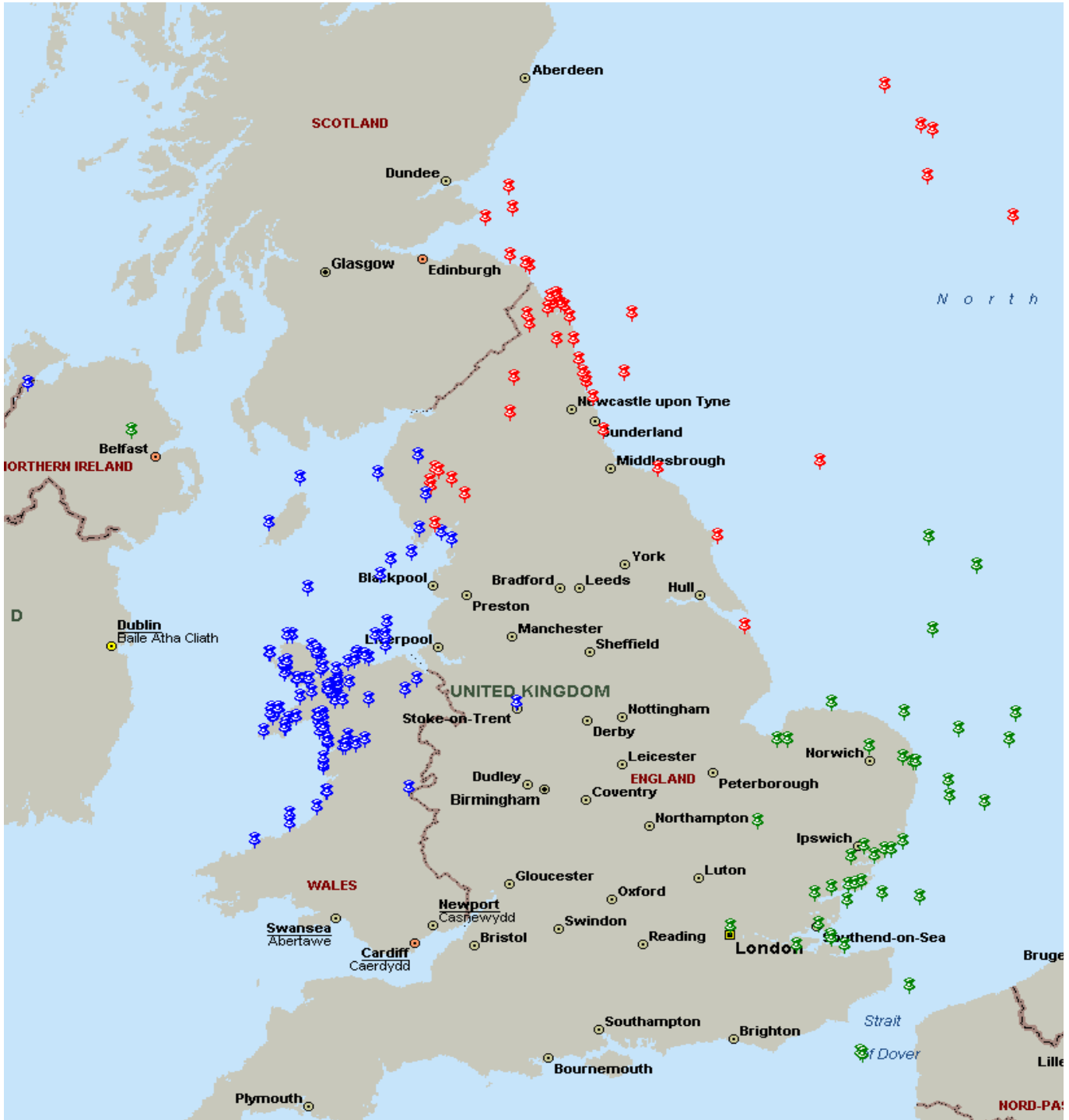
Although each unit will typically respond to callouts close to their base, they are sometimes required to travel further.

The consolidated aeronautical SAR coverage provided by the RAF, Royal Navy and MCA means that there are certain areas which are typically covered by the MCA (and as such are not represented on the following maps). In particular, the south coast of England is typically covered by the MCA units at Lee on Solent and Portland. Similarly, the Hebrides and Shetland Islands are typically covered by MCA units.

5. UK Search and Rescue Geography




Map 1 UK Callouts, 2013 Q3

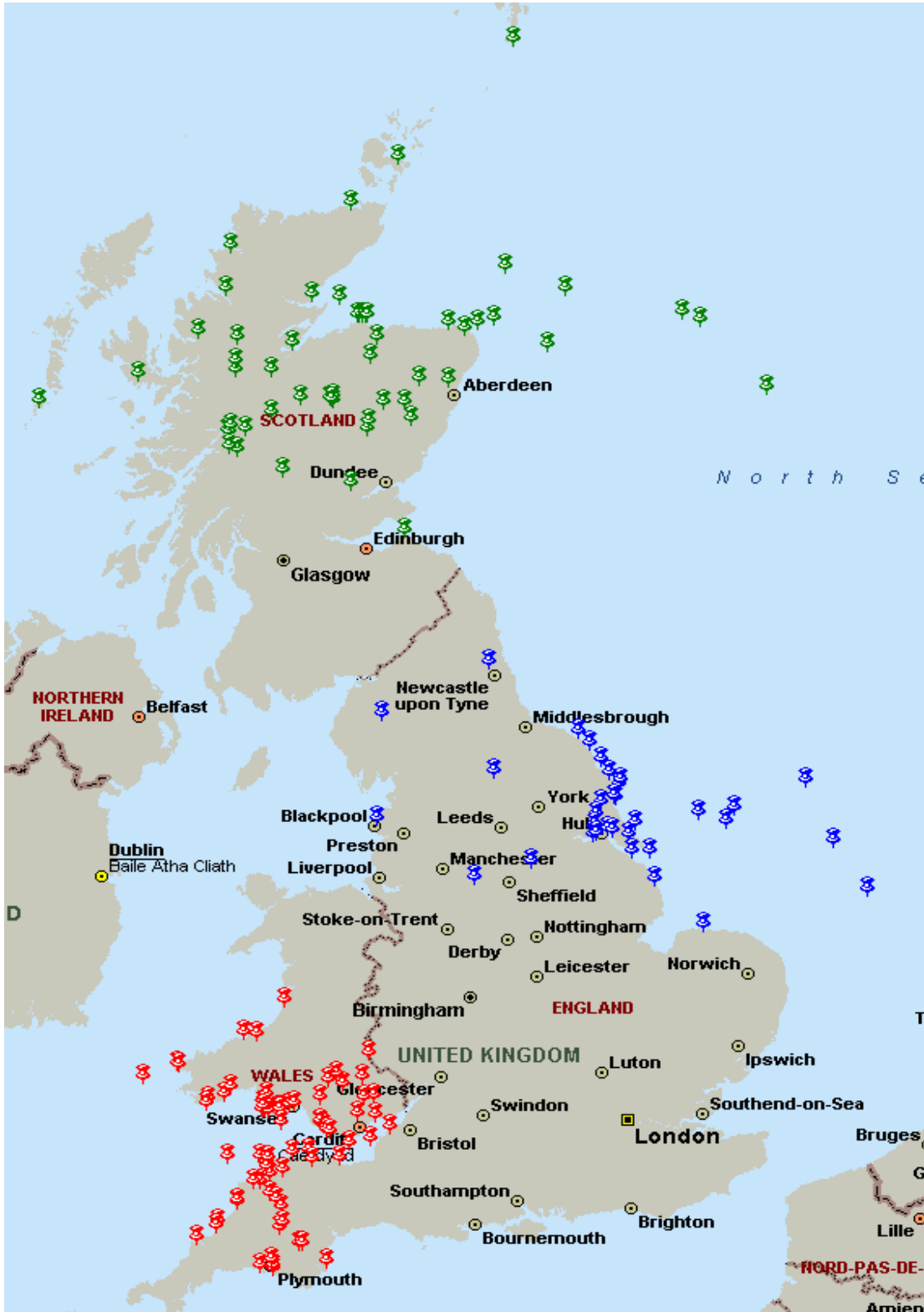
| | |
|---------------|---|
| RAF Boulmer |  |
| RAF Valley |  |
| RAF Wattisham |  |



5. UK Search and Rescue Geography



Map 2 UK Callouts, 2013 Q3

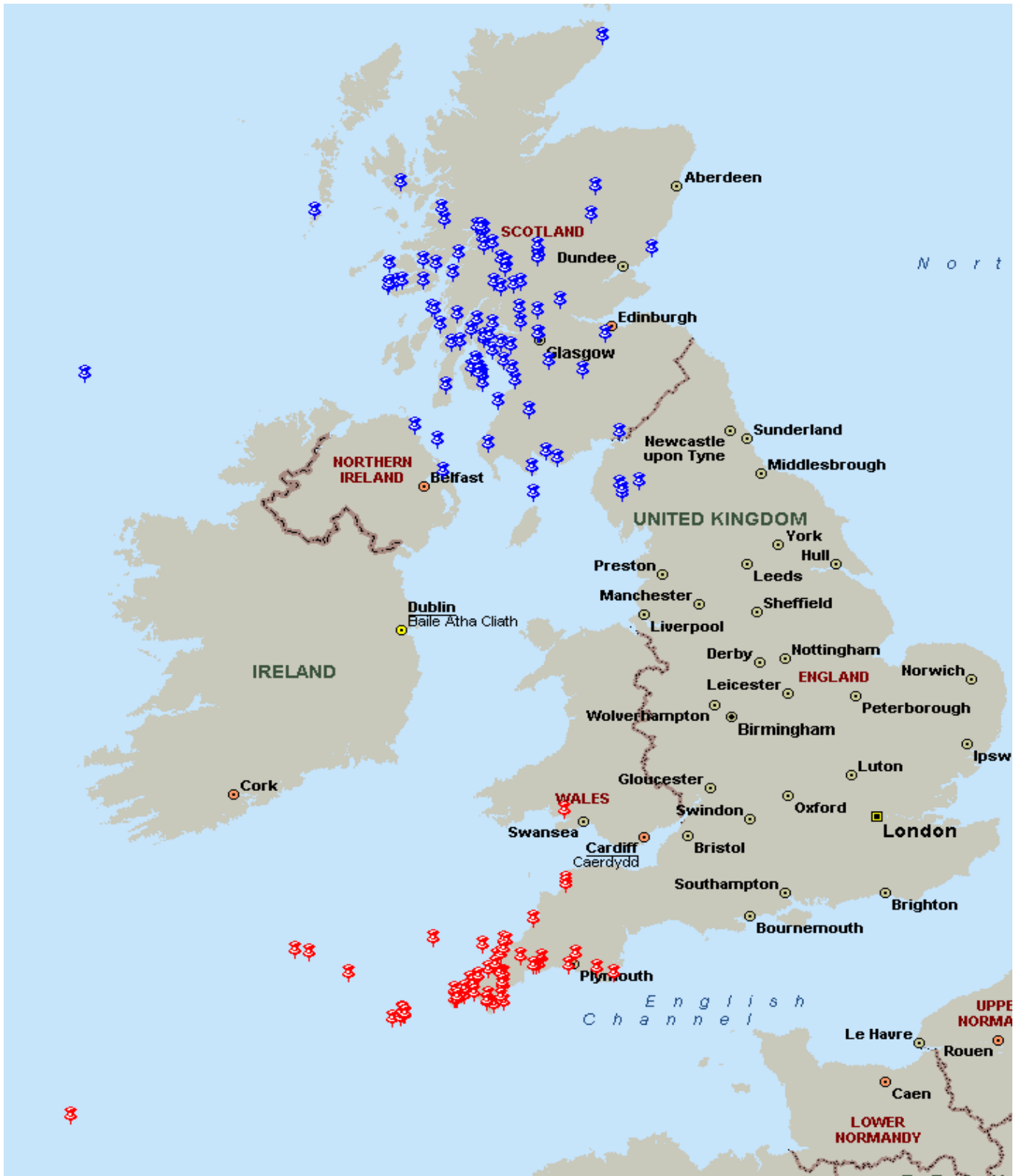
| | |
|-----------------|---|
| RAF Chivenor |  |
| RAF Leconfield |  |
| RAF Lossiemouth |  |



5. UK Search and Rescue Geography





Map 3 UK Callouts, 2013 Q3

| | |
|---------------|---|
| RNAS Culdrose |  |
| HMS Gannet |  |



5. UK Search and Rescue Geography

Map 4 UK Callouts, 2013 Q3

| | |
|-----------------|---|
| MRT Lossiemouth |  |
| MRT Leeming |  |
| MRT Leuchars |  |
| MRT Valley |  |



6. Search and Rescue definitions

| | | GROUPING |
|--------------------|--|-----------------|
| RESCUE | Transfer of distressed uninjured person(s) from a hostile to a benign environment. | Rescue-Type |
| MEDRESCUE | Transfer of sick or injured persons(s) from a hostile environment to a recognised medical facility (eg, hospital or chamber). | Rescue-Type |
| TRANSFER | Transfer of military personnel, or their families, on compassionate grounds. | Rescue-Type |
| MEDTRANSFER | Transfer of patients or organs between medical establishments at the request of a recognised Medical Authority, i.e. NHS Trust, Hospital or Ambulance Authority. | Rescue-Type |
| RECOVERY | Recovery of person(s) apparently dead. | Rescue-Type |
| SEARCH | Search for craft, person(s), etc which does not result in moving a person. | Search-Type |
| SEARCH – RESCUE | Search for craft, person(s), etc resulting in the rescue of an uninjured person. | Search-Type |
| SEARCH – MEDRESCUE | Search for craft, person(s), etc resulting in the rescue of a sick/injured casualty. | Search-Type |
| SEARCH – ASSIST | Search for craft, person(s), etc involving assistance to other SAR assets. | Search-Type |
| SEARCH – RECOVERY | Search for craft, person(s), etc resulting in the recovery of person(s) apparently dead. | Search-Type |
| SEARCH – ABORT | Search for craft, person(s), etc during which callout terminated due to eg malfunction or adverse weather. | Search-Type |
| TOP-COVER | On-scene assistance, e.g. communications relay, target identification, vectoring to target etc. for another rescue asset, or as cover for person(s) or vessel(s) in distress that does not result in further intervention. | Assistance-Type |
| PRECAUTION | Pre-positioning of a SAR helicopter to provide faster response to an anticipated or potential incident, eg, in response to an aircraft declaring a “MAYDAY” or a potential incident on a offshore installation. | Assistance-Type |
| ASSIST | Assistance to other SAR assets etc, such as moving SAR personnel or equipment (eg, mountain rescue teams, divers, pumps), shepherding of aircraft etc. | Assistance-Type |
| CIVIL AID | Military Aid to the Civil Community (eg fire control). | Assistance-Type |
| RECALLED | Asset recalled from incident whilst en route. | Other |
| NOT REQUIRED | Asset arrived on scene but no action required. | Other |
| ABORT | Callout terminated due to eg malfunction or adverse weather. | Other |
| FALSE ALARM | Unnecessary callout with good intent. | Other |
| HOAX | Unnecessary callout with malicious intent | Other |