



# Statistical Bulletin

29 August 2013

Coverage: UK  
Theme: Migration

## *National Insurance Number Allocations to Adult Overseas Nationals Entering the UK – registrations to March 2013.*

*This annual report provides statistics regarding National Insurance Numbers (NINo) allocated to adult overseas nationals entering the United Kingdom (UK). A NINo is generally required by any overseas national looking to work or claim benefits / tax credits in the UK, including the self employed or students working part time.*

*The statistics provide a measure of immigration (inflow) for adult overseas nationals registering for a NINo, however do not reflect emigration (outflow), or the overall migrant population (stock)*

Statistics on National Insurance Number Allocations to Adult Overseas Nationals Entering the UK are full National Statistics;

Following an internal review, this series will now be released quarterly. Next release date 28th November 2013

The 'focus on' article contained in this report is an update from a previous ad hoc release on nationality at point of National Insurance number registration of DWP working age benefit recipients. These are classed as Official Statistics only.

*Further information and statistics on NINo registrations to adult overseas nationals entering the UK can be obtained using the Department's internet-based interactive tabulation tool - Stat-Xplore (see web link below)*

<https://www.gov.uk/government/organisations/department-for-work-pensions/series/national-insurance-number-allocations-to-adult-overseas-nationals-entering-the-uk>

*The method by which the data is randomly adjusted for disclosure control differs within Stat-Xplore to that previously published on the departments tabulation tool, figures may slightly differ to those previously published (though the underlying data remains the same).*

### Headline Figures:

- The total number of NINo registrations to adult overseas nationals entering the UK in 2012/13 was 562 thousand, a fall of 39 thousand (6%) on the previous year.
- Within the European Union (EU) - The number of NINo registrations to adult overseas nationals entering the UK from within the EU in 2012/13 was 385 thousand, an increase of 35 thousand (10%) on the previous year.
- Rest of the world - The number of NINo registrations to adult overseas nationals entering the UK from outside the EU in 2012/13 was 177 thousand, a fall of 74 thousand (29%) on the previous year.

**Issued by:**  
IGS  
Department for Work and Pensions

Telephone:  
Press Office: 0203 267 5160

Website:  
[www.dwp.gov.uk](http://www.dwp.gov.uk)

**Statistician:**

Steve Watkins  
IGS  
Department for Work and Pensions  
Kings Court  
80 Hanover Way  
Sheffield  
S3 7UF

Telephone: 01142098387  
Email:  
[steven.watkins@dwp.gsi.gov.uk](mailto:steven.watkins@dwp.gsi.gov.uk)

**Next release of NINo registration data:**  
28th November 2013

*If you have any comments or requests regarding this publication, please contact DWP via [stats-consultation@dwp.gsi.gov.uk](mailto:stats-consultation@dwp.gsi.gov.uk).*



Definition of World Area 3

**1 NINo Registrations to adult overseas nationals entering the UK**

Time series

Fig 1.1 : time series by quarter (12 month total to the end of the quarter) January 2002 to March 2013 4

World area and nationality

Fig 1.2 : by financial year and world area, 2002/3 to 2012/13 5

Fig 1.3 : Top 20 countries 2002/3 to 2012/13 6

UK area : geographical regions

Fig 1.4 : by UK region for 2012/13 7

Fig 1.5 : top 20 Local Authorities for 2012/13 7

Fig 1.6 : Local Authority as a percentage of working age population for 2012/13 8

DWP benefits

Fig 1.7: Percentage of adult overseas nationals claiming a key DWP out-of-work benefit within 6 months of registration, by year of registration 2002/03 to 2011/12 9

**2 Focus on: Nationality at point of National Insurance number registration of DWP benefit claimants**

Background and headline figures 10

Non-UK nationals at NINo registration:

Fig 2.1 - 2.2 : DWP working age benefit claimants by world area, Feb-2008 to Feb2013 11

Fig 2.3 – 2.4 : DWP working age benefit claimants by client group and world area, Feb 2008 to Feb 2013 12

Fig 2.5 : DWP working age benefit claimants by region, Feb 2013 13

Fig 2.6 : DWP working age benefit claimants by Client Group and top 20 nationalities, Feb 2013 14

**3 Sources / Notes**

Notes 15



## ***Definition of World Area***

For reporting purposes, countries have been grouped into ‘**world areas**’ based primarily on geographical location. Throughout this document Europe is represented as 3 world areas reflecting their status within the European Union (EU). These are :

**Europe - EU excluding Accession Countries** : (EU14) Founder members or countries acceding to the EU prior to May 2004. These comprise of Austria, Belgium, Denmark, Finland, France, Germany, Greece, Italy, Luxembourg, Netherlands, Portugal, Republic of Ireland, Spain, Sweden

**Europe - EU Accession Countries** : Countries acceding to the EU from May 2004.  
Joined the EU 1<sup>st</sup> May 2004 – (EU8) Czech Republic, Estonia, Hungary, Republic of Latvia, Republic of Lithuania, Poland, Slovak Republic, Republic of Slovenia.

Cyprus and Malta (Joined the EU 1<sup>st</sup> May 2004 but not referred to as part of the EU8)

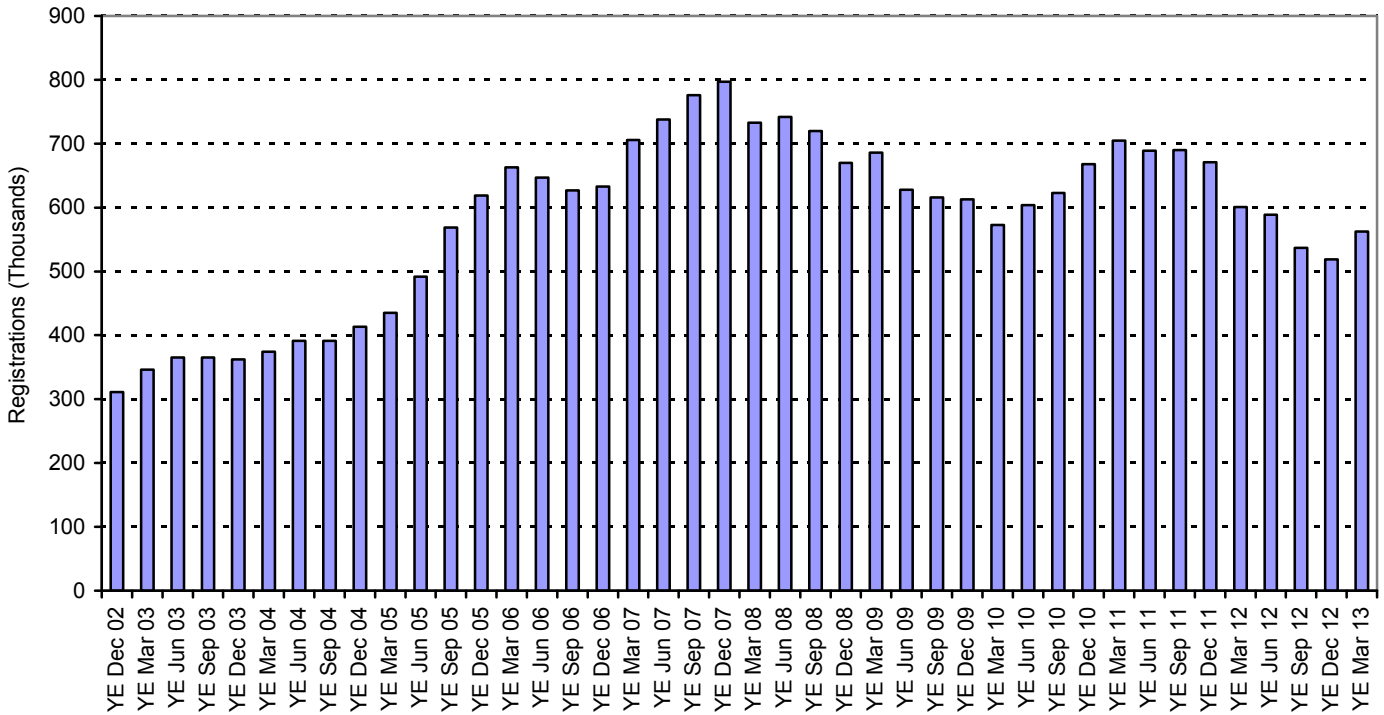
Joined the EU 1<sup>st</sup> January 2007 – (EU2) Bulgaria, Romania

**Europe – Non EU** : European countries that are not members of the EU at 1<sup>st</sup> April 2013. For the purpose of these statistics, this includes Croatia, who joined the EU in July 2013 – outside the reporting period for this report.

Note : European Economic Area (EEA) comprises of the member states of the European Union plus Iceland, Liechtenstein, and Norway

**Time series**

**Fig 1.1 : NINo registrations to adult overseas nationals entering the UK, registration time series by quarter (12 month total to the end of the quarter), March 2002 to March 2013.**



Source: 100% extract from National Insurance Recording and Pay as you Earn System (NPS).

Notes :

1. Registration date is derived from the date at which a NINo is maintained on the NPS

Note : Caution should be taken in interpreting trends based on raw quarterly data, hence a ‘12 month to date’ rolling total is shown in fig 1.1 to better reflect trends in the quarterly series.

The raw quarterly time series of NINo registrations to adult overseas nationals shows a number of peaks and troughs. The series is reflecting both seasonal effects in the registration of adult overseas nationals entering the UK and operational factors in recording a NINo on the NPS computer system.

The total number of NINo registrations to all adult overseas nationals entering the UK rose from 311 thousand in 2002, with a sharper increase from 2004 following the accession of the eight eastern European countries (EU8) plus Malta and Cyprus, to the European Union, to a peak of 797 thousand in 2007. Over the last 2 years, the numbers have fallen following a second peak of 705 thousand in the year ending March 2011. Registrations for the 12 months to March 2013 show an increase on the 12 months to December 2012, however this is too early to infer the start of an increasing trend.

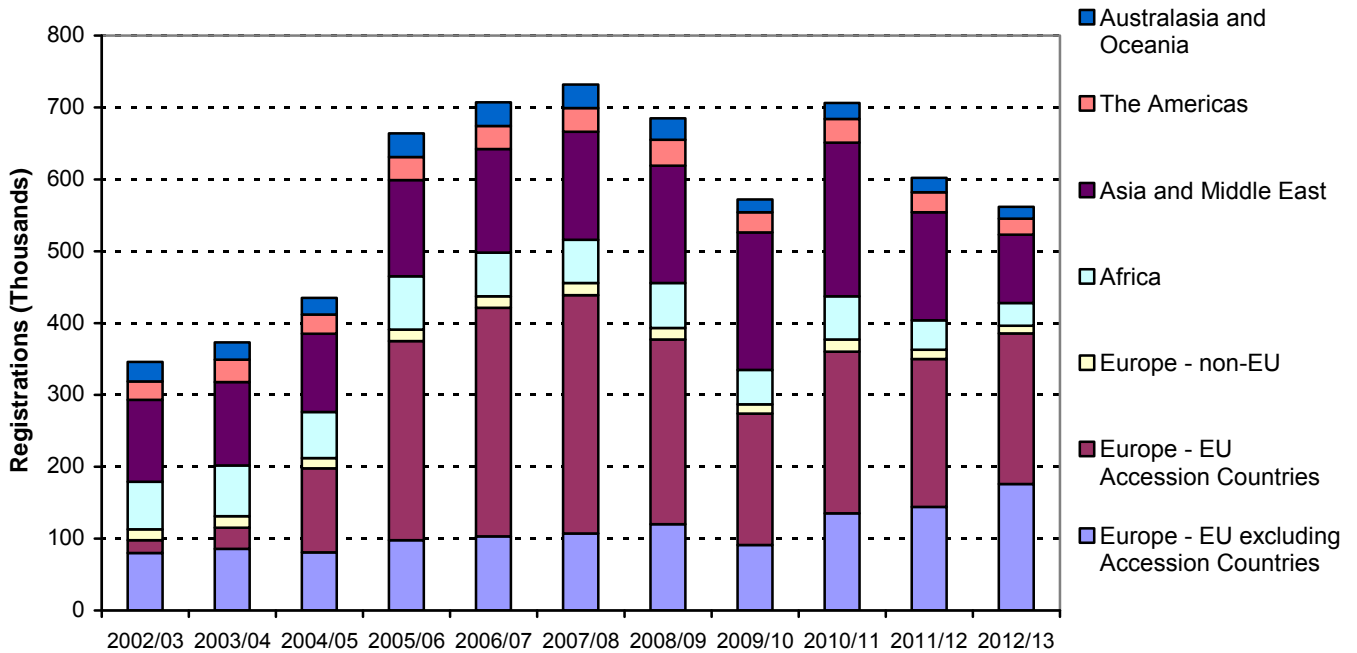
Fig 1.1 has been derived from the quarterly time series available in Stat Xplore :

<https://www.gov.uk/government/organisations/department-for-work-pensions/about/statistics#stat-xplore>



**World area and nationality**

**Fig 1.2 : NINo registrations to adult overseas nationals entering the UK, by year of registration and world area, 2002/03 to 2012/13.**



Source: 100% extract from National Insurance Recording and Pay as you Earn System (NPS).

Notes :

1. Registration date is derived from the date at which a NINo is maintained on the NPS
2. For consistency of reporting, EU Accession countries here refers to EU8, Malta and Cyprus and EU2(Bulgaria & Romania) for the entire Back Series including the periods before Accession and after transitional arrangements have ended. (See notes)
3. Time Series - Year Of Registration Date Years are shown as financial year (1st April - 31st March )

**Within the European Union (EU):**

During 2012/13, 209 thousand NINo’s were registered to the Eastern European countries who acceded to the EU in 2004 (for whom labour market restrictions were lifted across the EU as a whole in May 2011) plus the more recent accession countries (Romania and Bulgaria) – an increase of 3 thousand (1%) on 2011/12.

Registrations to other EU nationals (176 thousand in 2012/13) increased by 22%.

**Rest of the world:**

Outside of the European Union, annual registrations to all world areas have fallen to lowest levels since the reporting period began (2002/03).

Those to European, non-EU nationals fell by 15% to 11 thousand.

95 thousand NINo’s were registered to Asian & Middle East nationals during 2012/13 – 36% lower than in 2011/12.

Registrations to those from the Americas fell by 18% to 23 thousand.

Registrations from Africans fell by 23% (to 31 thousand) and from Australasia and Oceania fell by 16% (to 16 thousand).



**Fig 1.3 : NINo registrations to adult overseas nationals entering the UK, top 20 countries for 2012/13**

2012/13 Rank*	Country	2012/13 Total (thousands)	% change from 2011/12	2011/12 Total (thousands)	2011/12 Rank
1 ●	Poland	91.36	15%	79.13	1
2 ▲	Spain	45.53	50%	30.41	5
3 ▲	Italy	32.80	35%	24.27	6
4 ▼	India	31.25	-34%	47.29	2
5 ▼	Rep of Lithuania	27.32	-18%	33.19	4
6 ▲	Hungary	24.67	36%	18.13	10
7 ▲	Portugal	24.55	43%	17.23	11
8 ●	France	21.23	-2%	21.57	8
9 ▼	Romania	17.82	-22%	22.97	7
10 ▼	Pakistan	16.16	-58%	38.31	3
11 ▲	Rep of Ireland	15.54	-2%	15.93	12
12 ▼	Rep of Latvia	13.60	-27%	18.62	9
13 ●	China Peoples Rep	12.01	-19%	14.85	13
14 ●	Australia	11.78	-17%	14.20	14
15 ▲	Slovak Rep	11.48	16%	9.88	19
16 ▲	Germany	10.95	-7%	11.78	17
17 ▼	Nigeria	10.51	-24%	13.76	15
18 ▼	Bulgaria	10.40	-17%	12.60	16
19 ▼	USA	9.03	-10%	10.07	18
20 ▲	Greece	8.68	44%	6.04	24

\*▲, ▼ : indicates **ranking** movement from previous year, for example German registrations have fallen by 7% on the previous year but Germany has moved up to 16<sup>th</sup> in the ranked table compared to NINo registrations in 2012/13

Source: 100% extract from National Insurance Recording and Pay as you Earn System (NPS).

Notes :

1. Registration date is derived from the date at which a NINo is maintained on the NPS

2. Time Series - Year Of Registration Date Years are shown as financial year ( 1st April - 31st March )

Two factors thought to be influencing the trends in terms of NINo registrations across different nationalities / world areas are:

- The restrictions placed on non-EEA workers and students – India, Pakistan, China Peoples Republic, Australia and Nigeria all showing continued falling trends since 2010/11.
- High unemployment rates, particularly from countries most severely impacted by the euro zone crisis – unemployment rates in Greece (24.3%), Spain (24.3%), Portugal (15.9%) are all much higher than the overall EU average (11.4%). Though the unemployment rate in Italy is lower than the EU average (10.7%), figures show a rise in unemployment over the last 5 years.

European unemployment figures 2012 - Source Eurostat

([http://epp.eurostat.ec.europa.eu/statistics\\_explained/index.php/Unemployment\\_statistics](http://epp.eurostat.ec.europa.eu/statistics_explained/index.php/Unemployment_statistics))



## UK area : geographical regions

NINo registrations are allocated to Regions (previously Government Office Regions), Local Authorities and Parliamentary Constituencies using address matching software and matching to the latest postcode directory. Figures reflect the best estimate of an adult overseas national's locality at the time of registering for a NINo.

In 2012/13, of the 562 thousand NINo's registered to adult overseas nationals entering the UK, 226 thousand (40%) first registered within the London Region. Northern Ireland and the North East have the fewest registrations, both with 1% of the UK total respectively (Fig 1.4).

Of the top 20 Local Authorities (Fig 1.5) with the highest number of registrations in 2012/13, 16 are in the London Region. Birmingham, Edinburgh, Manchester and Glasgow represent the highest Local Authorities outside of London.

**Fig 1.4: NINo registrations to adult overseas nationals entering the UK, by Region registrations 2012/13**

Region	Thousands
London	225.82
South East	63.36
East of England	42.09
North West	37.51
West Midlands	37.31
Scotland	37.17
Yorkshire and The Humber	30.61
East Midlands	30.05
South West	28.51
Wales	10.92
North East	8.03
Northern Ireland	7.80
Overseas Residents	2.92

**Fig 1.5: NINo registrations to adult overseas nationals entering the UK, top 20 ranked Local Authorities 2012/13**

Local Authority	Thousands
Newham	16.16
Tower Hamlets	14.82
Brent	14.49
Haringey	11.85
Southwark	10.83
Westminster	10.76
Birmingham	10.75
Lambeth	10.62
Ealing	10.60
Waltham Forest	10.55
Edinburgh, City of	10.53
Manchester	9.69
Camden	8.59
Barnet	8.30
Wandsworth	8.29
Hammersmith and Fulham	8.19
Islington	7.91
Hackney	7.55
Hounslow	7.28
Glasgow City	6.89

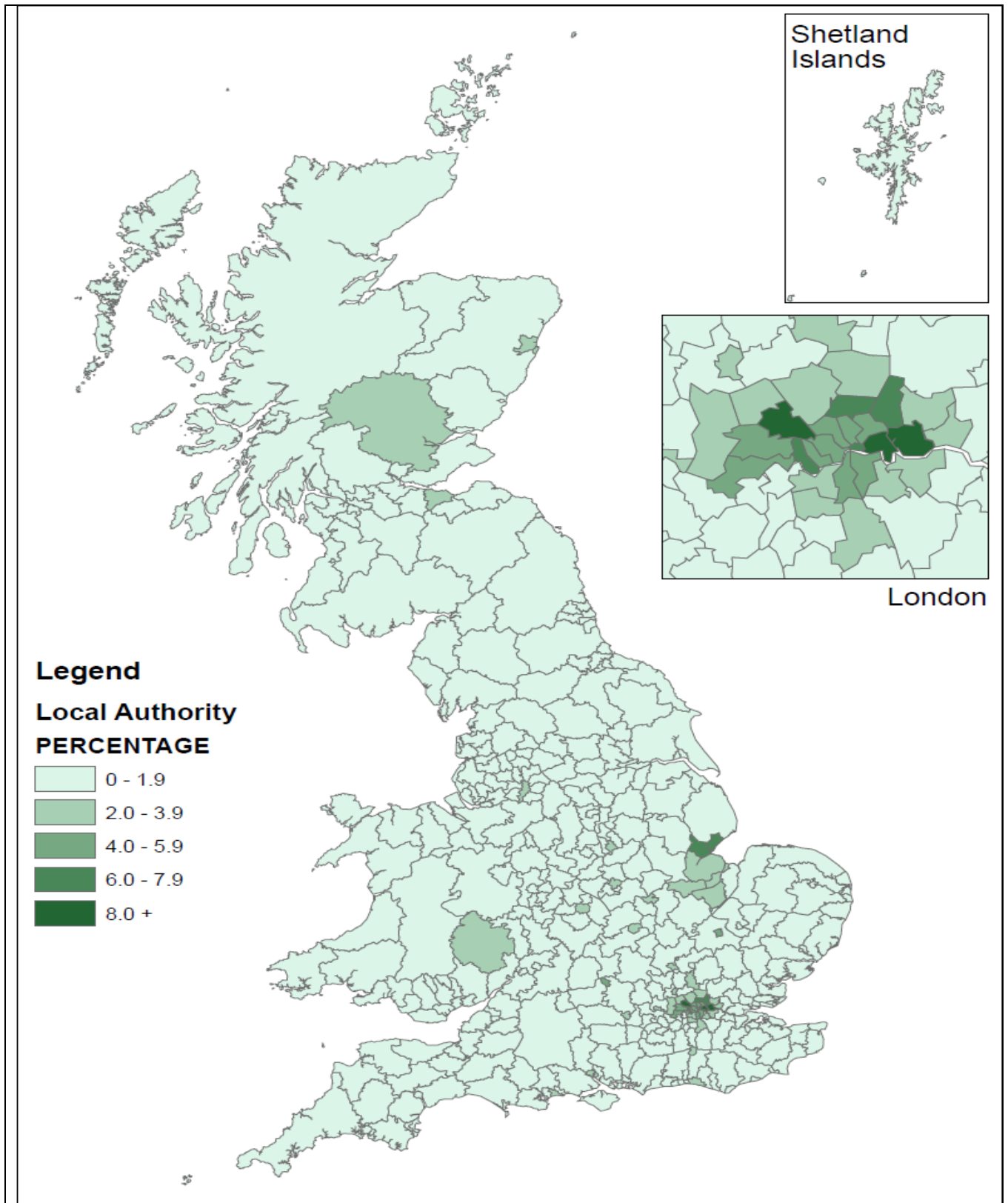
Source: 100% extract from National Insurance Recording and Pay as you Earn System (NPS).

Notes

Fig 1.6 shows the proportion of NINo registrations to adult overseas nationals entering the UK in 2012/13 by Local Authority as a percentage of the working age population (ONS mid year population estimates 2010). The London Region contains a number of Local Authorities with high proportions. Outside of the major cities, areas with large agricultural and food processing employment sectors can be seen alongside areas with high concentration of manufacturing / factory work or large trading estates.



**Fig 1.6: NINo registrations to adult overseas nationals entering the UK in 2012/13 by Local Authority as a percentage of working age population (ONS mid year population estimate 2010).**



Source: 100% extract from National Insurance Recording and Pay as you Earn System (NPS). ONS mid year population estimates 2010.



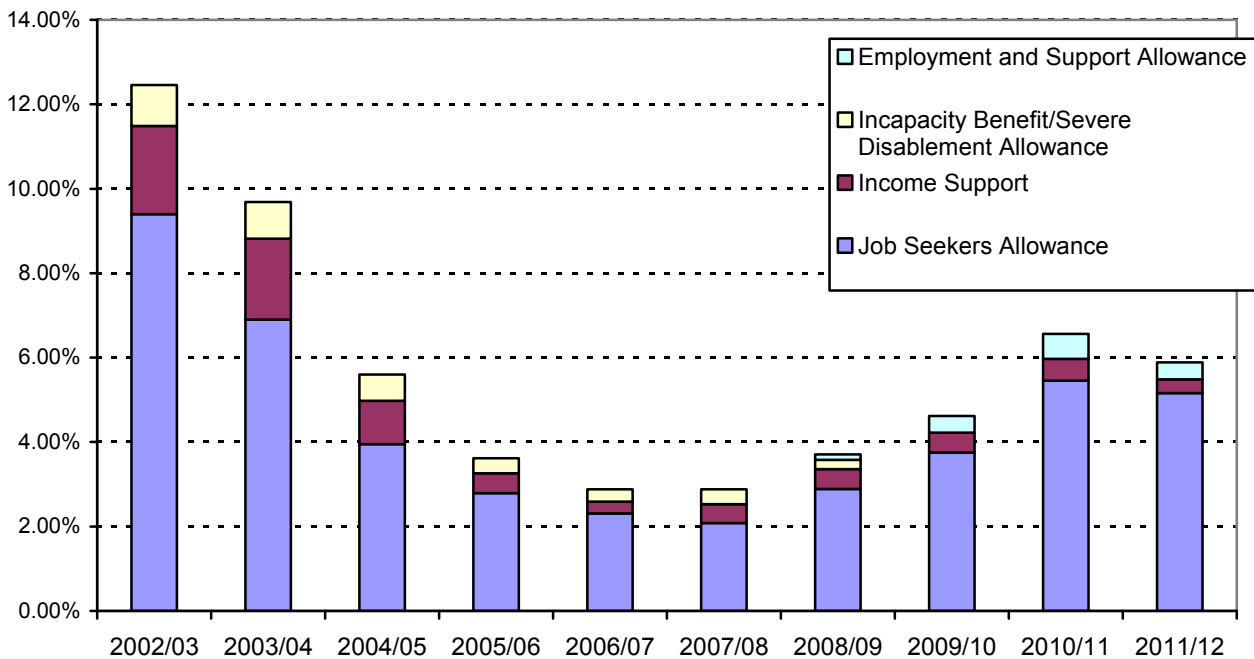


## DWP Benefits

DWP produces quarterly National Statistics of benefit claimants in the UK. In particular, key out-of-work benefits data (Jobseekers Allowance (JSA), Employment and Support Allowance (ESA), Incapacity Benefit (IB), and Income Support (IS)).

NINo registration data have been merged with DWP benefits data to show numbers and proportions of adult overseas nationals claiming benefit within 6 months of registering for a NINo.

**Fig 1.7: Percentage of `adult overseas nationals entering the UK claiming a DWP key out-of-work benefit within 6 months of registration, by year of registration.**



Source: 100% extract from National Insurance Recording and Pay as you Earn System (NPS)

Note - The above chart shows the latest figures where benefits data relating to the 6 month reporting periods are available. Data is not shown for the year 2012/13 as for some claimants the 6 month reporting period to link to benefit claims has yet to elapse.

Of the 601 thousand registrations in 2011/12, 35 thousand (5.9%) were claiming a key out-of-work benefit – Job Seekers Allowance, Employment and Support Allowance, Incapacity Benefit or Income Support – within 6 months of NINo registration. This is down from 6.6% in 2010/11. The Percentage of registrations claiming a DWP key out-of-work benefit within 6 months of registration, was at its lowest level at 2.9% in 2006/07 and 2007/08.

Of the 35 thousand registrations in 2011/12 claiming a benefit within 6 months of registration, 88% claimed JSA, 7% claimed ESA and 6% claimed IS.

## **2 Focus on : Nationality at point of National Insurance number registration of DWP benefit claimants**

On 20 January 2012, the Department for Work and Pensions published ad hoc statistics on the nationality at point of National Insurance number registration of DWP working age benefit recipients at February 2011. The following is an update to the previous ad hoc statistical release – please note that this section has not been accredited by the UK Statistics Authority so are not full National Statistics.

Data on nationality is not routinely published as the source systems used to capture and process benefit claims, typically do not include a nationality marker. For *contributory benefits*, nationality is not a qualifying factor, as eligibility is determined by the National Insurance contributions that the claimant has made. For *other income-related benefits* where residency conditions apply and the claimant must be lawfully resident in the UK, nationality is a factor. Once residency has been determined, nationality is not required for further processing and is therefore not routinely held on DWP computer systems.

***These statistics do not provide a measure of non-UK nationals currently claiming benefits based on their current nationality. The statistics do provide an estimate of the number of people currently claiming benefit who, when they first registered for a NINo (that is, first entered the labour market), were non-UK nationals.***

Further details on the methodology and data limitations may be found in the technical annex of the original report (link below), including results from a sample exercise to match non-EEA claimants (recorded as foreign nationals at NINo registration) with UK Border Agency (UKBA) systems. This suggested that more than half (54%) will have obtained British citizenship subsequently, and the majority of the remainder will have some form of immigration status providing legitimate access to public funds in certain circumstances.

[www.gov.uk/government/uploads/system/uploads/attachment\\_data/file/196677/nat\\_nino\\_regs.pdf](http://www.gov.uk/government/uploads/system/uploads/attachment_data/file/196677/nat_nino_regs.pdf)

- As at February 2013, over 5 and a half million people were claiming DWP working age benefits. Of these 397 thousand (7.0%) are estimated to have been non-UK nationals when they first registered for a NINo. This compares with 371 thousand (6.4%) in Feb 2011.
- There is significant variation in this rate by benefit type; 9.4% of all Jobseekers are estimated to have been non-UK nationals when they first registered for a NINo contrasted with 5.6% for (working age) incapacity benefit claimants.
- Across all DWP working age benefits, 31% of those claimants who were non-UK nationals at the time they first registered for a NINo were from within the European Union. Of the remainder, Asia and Middle East (32%) and Africa (24%) form the largest proportion of those claimants who were non-UK nationals at the time of first NINo registration.
- As at February 2013, 16.4% of working age UK nationals were claiming a DWP working age benefit compared to 6.7% of working age non-UK nationals (at the time they first registered for a National Insurance Number) (*resident working age UK population figures based on country of birth 2011, ONS*). Claimants who were non-UK nationals when they registered for a NINo may of course subsequently have become permanent residents or British citizens .

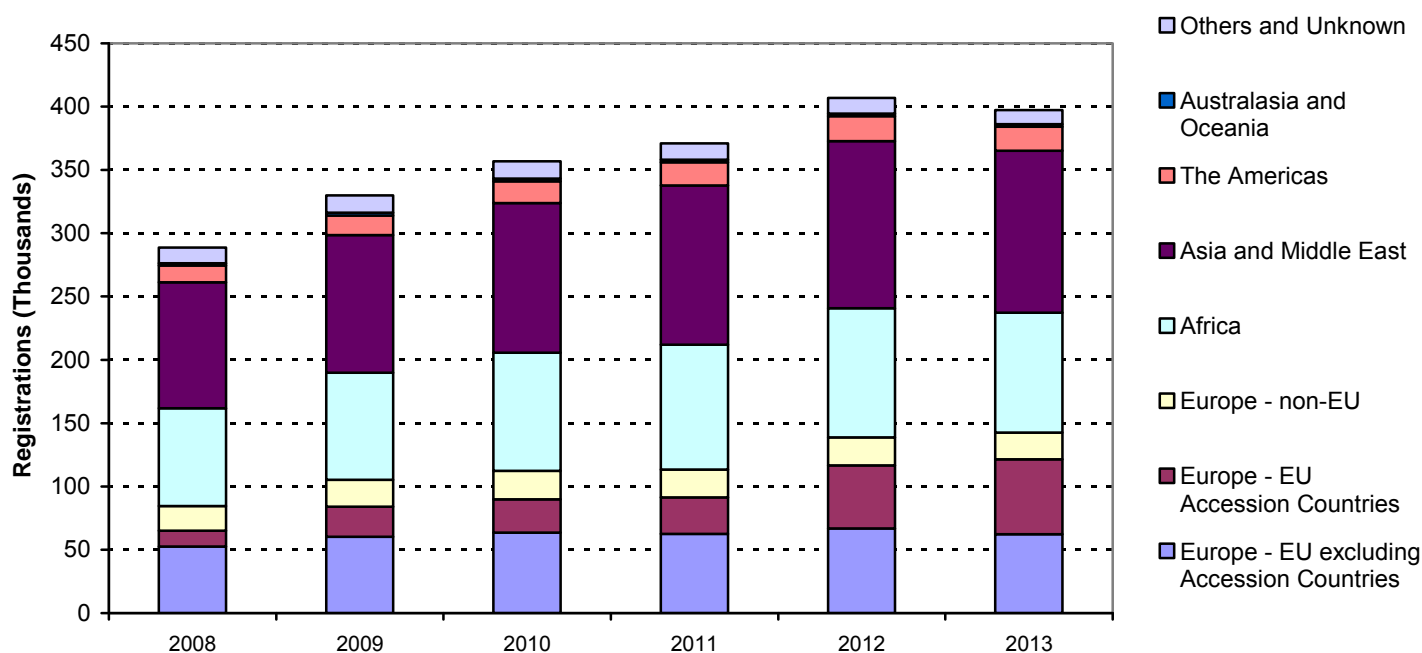
## Results

**Fig 2.1 : Non-UK nationals at NINo registration: DWP working age benefit claimants by world area, Feb-2008 to Feb 2013, Great Britain**

World Area of Origin	Feb-08	Feb-09	Feb-10	Feb-11	Feb-12	Feb-13
<b>All</b>	<b>5,174.88</b>	<b>5,802.48</b>	<b>5,917.56</b>	<b>5,765.34</b>	<b>5,881.70</b>	<b>5695.38</b>
UK nationals	4,886.17	5,472.74	5,560.72	5,394.31	5,474.79	5,298.23
Europe - EU excluding Accession Countries	52.48	60.41	63.67	62.57	66.80	62.33
Europe - EU Accession Countries	12.61	23.67	26.22	28.74	49.72	58.95
Europe - non-EU	19.46	21.29	22.40	21.99	22.34	21.31
Africa	77.12	84.38	93.28	98.76	101.87	94.70
Asia and Middle East	99.59	108.86	118.16	125.69	132.04	128.03
The Americas	13.32	15.38	17.36	18.31	19.72	18.71
Australasia and Oceania	1.67	2.23	2.19	2.08	2.11	2.00
Others and Unknown	12.47	13.53	13.56	12.89	12.30	11.13
Total Non UK nationals	288.72	329.75	356.84	371.02	406.90	397.16
% Non UK nationals	5.6%	5.7%	6.0%	6.4%	6.9%	7.0%

**Source:** DWP: Work and Pensions Longitudinal Study, and HMRC National Insurance and Pay as you Earn System (NPS). See notes in technical annex.

**Fig 2.2 : Non-UK nationals at NINo registration: DWP working age benefit claimants by world area, Feb-2008 to Feb 2013, Great Britain**



**Source:** DWP: Work and Pensions Longitudinal Study, and HMRC National Insurance and Pay as you Earn System (NPS). See notes in technical annex.

**Fig 2.3: non-UK nationals at NINo registration: DWP working age benefit claimants by Client Group and world area, February 2013, Great Britain**

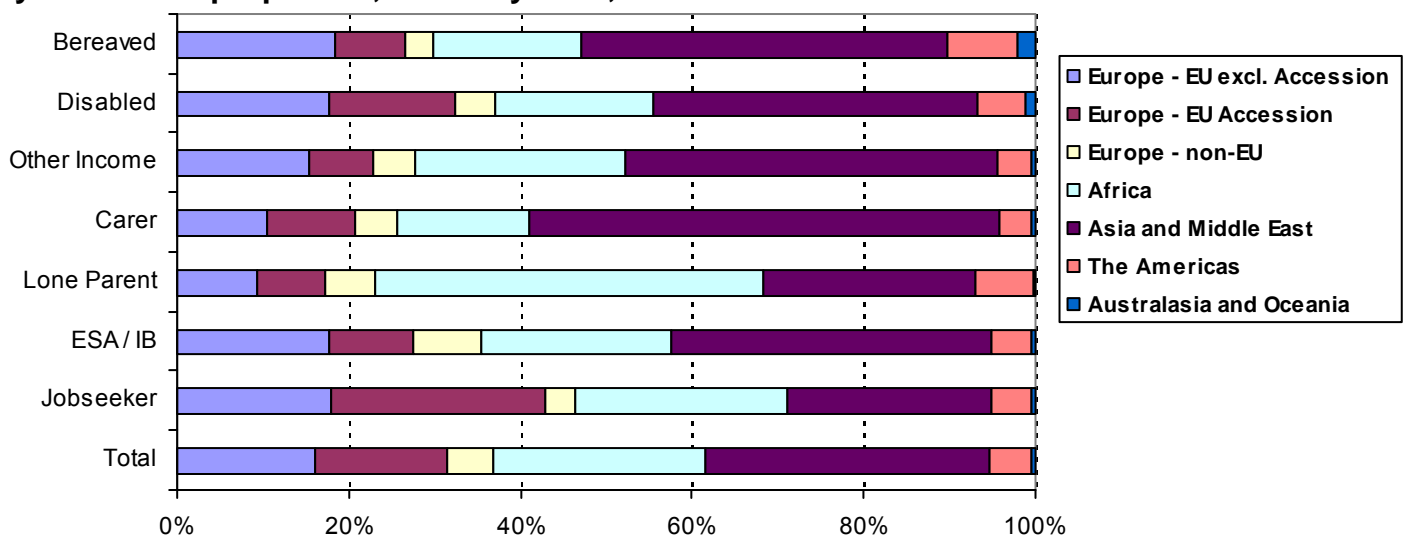
	Total non	Jobseeker	ESA and incapacity benefits	Lone Parent	Carer	Other Income Related	Disabled	Bereaved
Total non-UK nationals	397.16	142.27	139.48	40.23	41.27	9.36	17.38	7.14
Europe - EU excl. Accession	62.33	25.17	23.68	3.77	4.20	1.29	2.94	1.27
Europe - EU Accession	58.95	34.93	13.13	3.09	4.14	0.61	2.47	0.57
Europe - non-EU	21.31	4.88	10.67	2.33	2.03	0.41	0.77	0.22
Africa	94.70	34.58	29.61	18.05	6.16	2.05	3.06	1.20
Asia and Middle East	128.03	33.43	49.78	9.95	22.03	3.61	6.28	2.95
The Americas	18.71	6.50	6.20	2.66	1.51	0.33	0.94	0.57
Australasia and Oceania	2.00	0.56	0.76	0.10	0.22	0.04	0.18	0.14

**Source:** DWP: Work and Pensions Longitudinal Study, and HMRC National Insurance and Pay as you Earn System (NPS). See notes in technical annex.

Note the Carers, Disabled and Bereaved groups are not normally counted as being in the 'out-of-work' claiming groups.

- Across all DWP working age benefits, 31% of those claimants who were non-UK nationals when first registering for a NINo were from within the Europe Union (including 15% from Accession nationals). Of the remainder, Asia and Middle East (32%) and Africa (24%) form the largest proportion of non-UK claimants.
- There is significant variation by benefit type. For example, Africans form 45% of all non-UK nationals Lone Parent claimants, EU nationals form 25% of all non-UK nationals Jobseeker claimants, Asia and Middle East form 53% of all Carers and 36% of all incapacity benefits claimants.

**Fig 2.4: non-UK nationals at NINo registration: DWP working age benefit claimants. Client Group by world area proportion, February 2013, Great Britain**



**Source:** DWP: Work and Pensions Longitudinal Study, and HMRC National Insurance and Pay as you Earn System (NPS). See notes in technical annex.

**Fig 2.5: non-UK nationals at NINo registration: DWP working age benefit claimants by region, February 2013, Great Britain**

GB Region	Thousands
<b>All</b>	<b>397.16</b>
North East	6.94
North West	34.43
Yorkshire and the Humber	30.11
East Midlands	21.10
West Midlands	37.54
East of England	22.27
London	176.94
South East	29.12
South West	13.71
Wales	7.53
Scotland	14.47
Overseas Residents / Unknown	2.99

*Source: DWP: Work and Pensions Longitudinal Study, and HMRC National Insurance and Pay as you Earn System (NPS). See notes in technical annex.*

There is a significant disparity between the proportion of all GB working age benefit claimants living in London (13%) and the proportion for non-UK nationals (45%) – based on latest claimant address not the address at time of NINo registration. This partly reflects the high proportion of London residents who were either foreign nationals or were born abroad. ONS statistics show that around 38 per cent of all working age UK residents born abroad are living in London, and in 2012/13, of the 562 thousand NINo registered to non-UK nationals entering the UK, 40% were within the London Region (Fig 1.4).

**Fig 2.6 : Non-UK nationals at NINo registration: DWP working age benefits by Client Group and top 20 nationalities, February 2013, Great Britain**

Thousands

Nationality	Total	Jobseekers	ESA and Incapacity Benefits	Income Support
Pakistan	35.25	Poland 14.61	Pakistan 12.37	Somalia 5.12
Poland	26.54	Pakistan 7.66	Rep of Ireland 8.62	Pakistan 3.59
Somalia	22.52	Somalia 7.12	India 8.49	Jamaica 1.79
India	19.46	Portugal 5.86	Somalia 7.36	Nigeria 1.51
Bangladesh	16.14	Slovak Rep 5.86	Iran 6.96	Poland 1.43
Rep of Ireland	14.82	Iran 4.94	Poland 6.76	Eritrea 1.29
Iran	13.86	Bangladesh 4.33	Iraq 6.31	Bangladesh 1.17
Iraq	13.38	Iraq 4.13	Turkey 6.24	Congo 1.17
Portugal	12.44	Rep of Lithuania 4.06	Bangladesh 5.52	Turkey 1.08
Turkey	10.94	Czech Rep 3.78	Portugal 3.92	Ghana 1.08
Nigeria	9.25	Nigeria 3.62	Nigeria 2.61	Zimbabwe 1.05
Jamaica	8.49	India 3.54	Jamaica 2.47	Iraq 1.05
Slovak Rep	7.98	Jamaica 3.29	Italy 2.27	Portugal 1.03
Netherlands	6.82	France 3.12	Netherlands 2.14	Dem Rep of Congo 0.91
France	6.37	Rep of Latvia 3.09	Afghanistan 2.06	India 0.66
Rep of Lithuania	6.36	Italy 2.99	France 1.94	Ethiopia 0.66
Italy	6.29	Rep of Ireland 2.95	Sri Lanka 1.93	Rep of Ireland 0.64
Zimbabwe	6.15	Netherlands 2.88	Ghana 1.75	China Peoples Rep 0.63
Ghana	5.59	Zimbabwe 2.78	Algeria 1.71	Netherlands 0.61
Czech Rep	5.49	Spain 2.61	Germany 1.68	Uganda 0.57

**Source:** DWP: Work and Pensions Longitudinal Study, and HMRC National Insurance and Pay as you Earn System (NPS). See notes in technical annex.

The current working age claimants who were non-UK nationals at the time they first registered for a NINo come from a wide range of different countries, reflecting those coming to the UK to work, joining family members already resident in UK or as refugees granted asylum status. It should be recognised that for some of the claimants their country of birth will not be the same as their nationality.

### 3 Notes / Sources

DWP receive a quarterly cumulative scan from HMRC's National Insurance Recording and Pay as you Earn System (NPS) which contains details of all adult overseas nationals allocated a NINo. This is used to produce these National Statistics.

Data released on 29th August 2013 relates to the period to 31st March 2013. The lag between publication date and the period to which the data relates, reflects the processes involved in transferring the underlying data from HMRCs' National Insurance and Pay as You Earn System (NPS) to DWP; uploading the data onto DWP servers; cleaning the data and geocoding it, processing the data and allowing sufficient time for quality assurance. Aside from these technical issues, the statistics are published as part of the scheduled timetable for the release of cross-Government migration statistics.

The registration date referred to in this report represents the date the information on the individual was processed on HM Revenue and Customs' National Insurance Recording and Pay as you Earn System (NPS) i.e. after the NINo application and allocation process has been completed. This may be a number of weeks or months after arriving in the UK. The registration series is not subject to any future change.

The DWP NINo data covers people allocated a NINo for all types of work – including the self-employed and students working part-time – and whatever the length of stay in the UK. It also covers adult overseas nationals allocated a NINo to claim benefits or tax credits. In addition, the data is a 100% sample held at case-level data sources. In particular, the data can be merged with benefits data to show how many entrants claim key benefits following their NINo registration in the UK.

The DWP NINo data does not show when overseas nationals subsequently depart the UK, nor does it show length of stay in the UK. The DWP figures are therefore a measure of inflow of overseas nationals registering for a NINo. It does not measure outflow or overall stock of overseas nationals in the UK.

The definition of migrants in this publication – adult overseas nationals allocated a NINo – differs from other published statistics in the area, such as International Migration statistics derived from the International Passenger Survey (IPS), and statistics on foreign workers derived from the Labour Force Survey (LFS). The various definitions of migrants mean the data sources may have different numbers of migrants for the same time period.

The figures reflect adult overseas nationals allocated a NINo through the adult registration process. In addition there will be a small number of overseas nationals (aged 16-19 yrs) allocated a NINo automatically through the Juvenile Registration scheme. This occurs when the individual has previously been allocated a child registration number. These juvenile cases are not captured by the statistics.

#### **Other statistics on migration**

The Migration Statistics Quarterly Report provides a comprehensive picture of the various sources of migration statistics available and analysis of trends and includes headline NINo statistics.

<http://www.statistics.gov.uk/statbase/Product.asp?vlnk=15230>