



22<sup>nd</sup> August 2013

Coverage: England

Theme: Children,  
Education and skills

SFR 33/2013

**Issued by**

Department for Education  
Sanctuary Buildings  
Great Smith Street  
London SW1P 3BT

**Telephone:**

**Press Office**

020 7925 6789

**Public Enquiries**

0870 000 2288

**Statistician**

Emily Uttley

0114 274 2442

**Contact Us**

[Post16.STATISTICS@education.gsi.gov.uk](mailto:Post16.STATISTICS@education.gsi.gov.uk)

**Internet**

<http://tinyurl.com/Q2-2013-NEET-Statistics>

**NEET Statistics - Quarterly Brief – April to June 2013**

**Introduction**

This note sets out the available statistics on young people not in education, employment or training (NEET) and young people not in education or training (NET) from three data sources:

i) Participation Statistical First Release (SFR)

These are the authoritative national estimates of NEET and NET rates. They are published annually in the 'Participation in Education, Training and Employment by 16-18 Year Olds in England' SFR. These data are only available annually and cannot be disaggregated to sub-national levels. These take account of revised 2011 Census data, published by the Office for National Statistics (ONS).

ii) Quarterly Labour Force Survey (LFS)<sup>1</sup>

Analysis of the LFS allows in-year estimates to be made of NEET and NET trends as well as estimates for other age groups, including 16-24, 18-24 and 19-24. The quarterly LFS estimates cannot be directly compared with the headline Participation SFR series which is based on more detailed but less timely data. This LFS data has not yet been reweighted to reflect ONS's revised population estimates based on the 2011 Census. The ONS are due to complete this work in 2014.

The most recent LFS based estimates for NEET, for the period April to June 2013, are shown in the following table along with 2011 and 2012 data.

**Table: NEET rates for different age cohorts: England 2011 – 2013**

	April-June 2011	April-June 2012	April-June 2013	% point change from April-June 2012 to April-June 2013*
Age 16	6.6%	5.9%	5.0%	-0.8 ppts
Age 17	9.1%	9.7%	8.0%	-1.6 ppts
Age 18	14.5%	15.9%	14.4%	-1.5 ppts
Age 16-18	10.1%	10.5%	9.1%	-1.4 ppts
Age 19-24	19.3%	18.8%	18.3%	-0.5 ppts
Age 16-24	16.4%	16.3%	15.5%	-0.8 ppts

Source: Labour Force Survey, April to June

\*None of these changes are statistically significant

iii) Local Authorities' Client Caseload Information System (CCIS).

CCIS is the database that local authorities use to record the activity of young people aged 16-19 resident in their area. Data can be aggregated to provide estimates for local authorities and regions within England.

The data from all three sources cover England.

**Section 1- Trends.** Focuses on the key trends in the NEET and NET data series for 16-18 year olds.

**Section 2- Methodology and Notes.** Explains the methodology used to derive the different series, and gives guidance on their usage.

**Section 3- Tables.** Contains four tables showing numbers and percentages for the key data series on NET and NEET.

<sup>1</sup> The methodology used to produce these data was revised in May 2013 to ensure harmonisation with the new ONS UK NEET estimates. Further information about this change and the impact on previously released data can be found in the [Harmonised NEET Methodology paper](#).

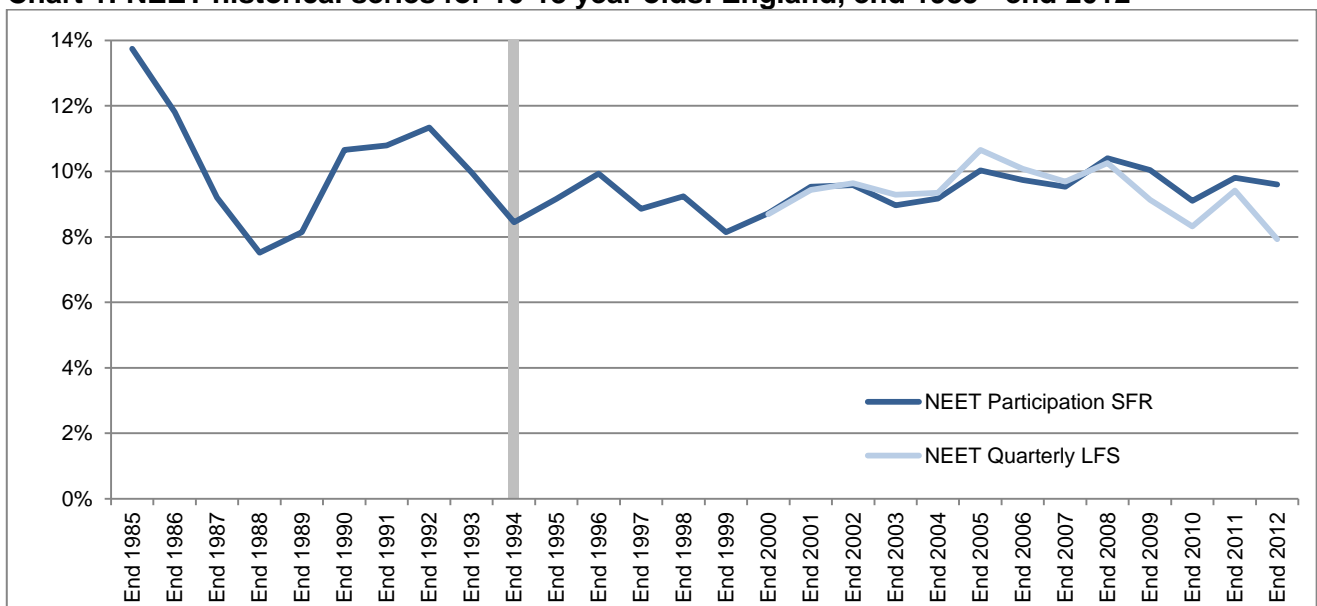
## 1. Trends

### Historical Context

Understanding the historical trends in NEET rates is an important part of placing current performance in perspective. The chart below shows the NEET Participation SFR measure from 1985 along with the LFS NEET measure back to 2000 (the furthest back the LFS methodology can be applied consistently).

Since the fall in the proportion of NEET in the mid-1990s, the 16-18 NEET rate has tended to fluctuate at around 9-10%.

**Chart 1: NEET historical series for 16-18 year olds: England, end 1985 - end 2012**



Source: Statistical First Release (SFR) 'Participation in Education, Training and Employment by 16-18 Year Olds in England' and analysis of Labour Force Survey (LFS).

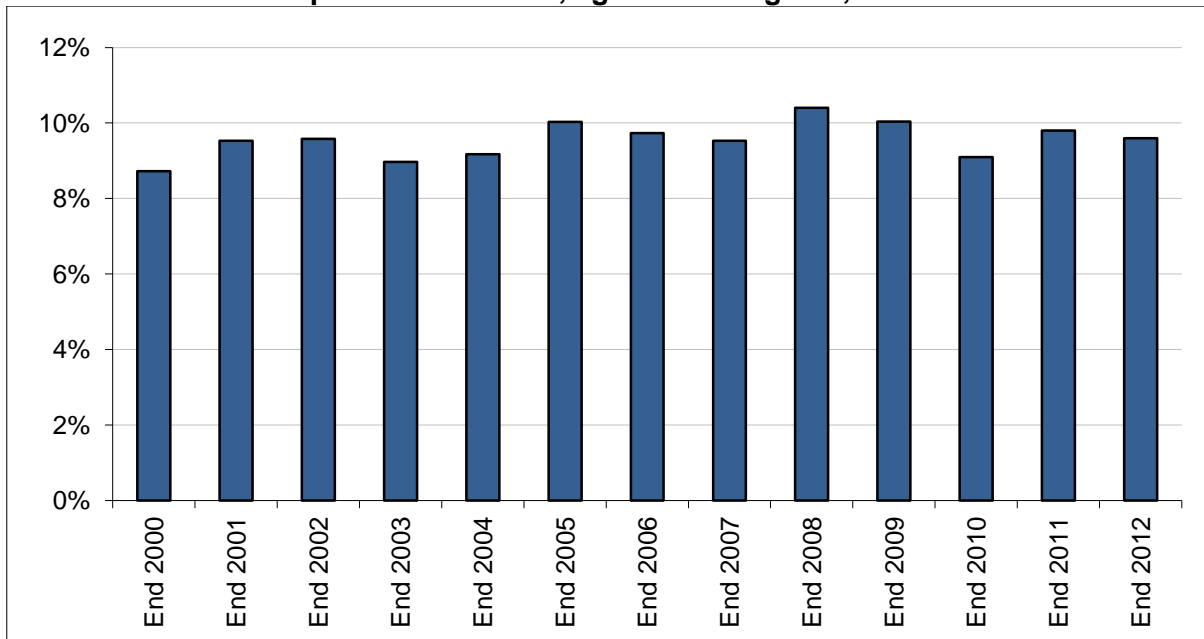
Note: There is a break in the SFR time-series in 1994 due to changes in the source of further and higher education data. The pre-1994 data sources produced slightly higher NEET estimates for 16-18 year olds than later sources.

#### a. NEET Participation SFR series (last updated August 2013)

The Department's Statistical First Release (SFR) '[Participation in Education, Training and Employment by 16-18 Year Olds in England](#)' is the primary source of national data on 16-18 year olds NEET.

The latest Participation SFR NEET rate for 16-18 year olds, at end 2012, was 9.6%, a fall of 0.2 percentage points from 9.8% at end 2011. This fall was due to a rising NET employment rate; however its impact on the NEET rate was limited due to the first drop in participation in education and training since 2001. The employment rate of 16-18 year olds NET rose from 41.1% at end 2011, to 44.1% at end 2012. Over the same period, participation in education and training decreased from 83.3% to 82.8%.

**Chart 2: NEET Participation SFR series, age 16-18: England, end 2000 – end 2012**



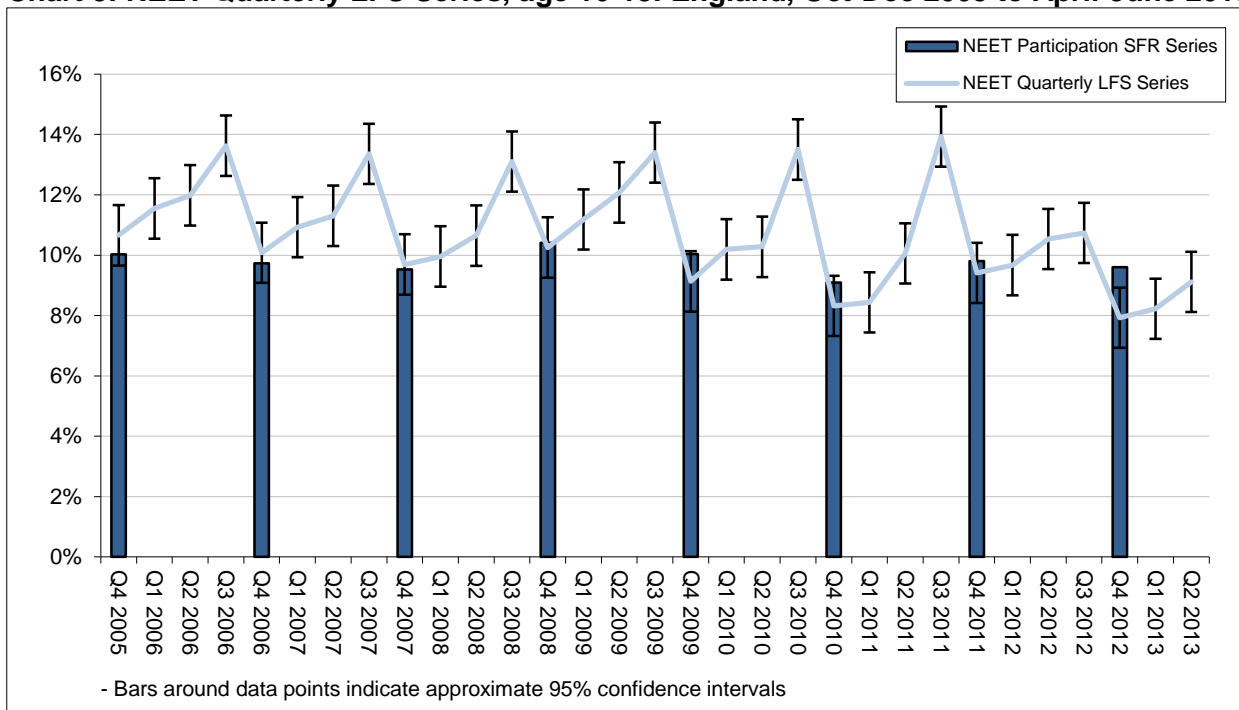
Source: Statistical First Release (SFR) 'Participation in Education, Training and Employment by 16-18 Year Olds in England'

**b. NEET quarterly LFS series (last updated August 2013)**

We can monitor trends in NEET rates between the publications of the Participation SFR series using quarterly LFS data.

The trend data for 16-18 year olds shows seasonal patterns that reflect the academic year: lower rates in autumn (October to December) followed by a gradual rise in spring and early summer (January to June) with a peak in late summer (July to September).

**Chart 3: NEET Quarterly LFS Series, age 16-18: England, Oct-Dec 2005 to April-June 2013**



Source: Quarterly Labour Force Survey and Participation SFR.

Note: Q1 relates to the months January - March, Q2 relates to April - June, Q3 relates to July - September and Q4 relates to October - December.

The latest data show that the proportion of 16-18 year olds NEET decreased by 1.4 percentage points to 9.1% in April-June 2013, compared to April-June 2012. This decrease was not statistically significant.

This decrease of 1.4 percentage points was driven broadly equally by two factors; an increase in participation in education and training, and an increase in the NET employment rate. The participation rate has risen 2.2 percentage points, from 80.9% in April-June 2012, to 83.0% in April-June 2013; this rise is statistically significant. At the same time, the NET employment rate for 16-18 increased by 1.4 percentage points, from 44.9% in April-June 2012, to 46.3% in April-June 2013.

There had been some evidence of increasing seasonality in the NEET data, seen by comparing October-December troughs to the following July-September peaks (roughly the same cohort of people). The difference between October-December 2008 and July-September 2009 was 3.1 percentage points; between October-December 2009 and July-September 2010 it was 4.4 percentage points; and between October-December 2010 and July-September 2011 it was 5.6 percentage points. However, the increase between October-December 2011 to July-September 2012 was just 1.3 percentage points.

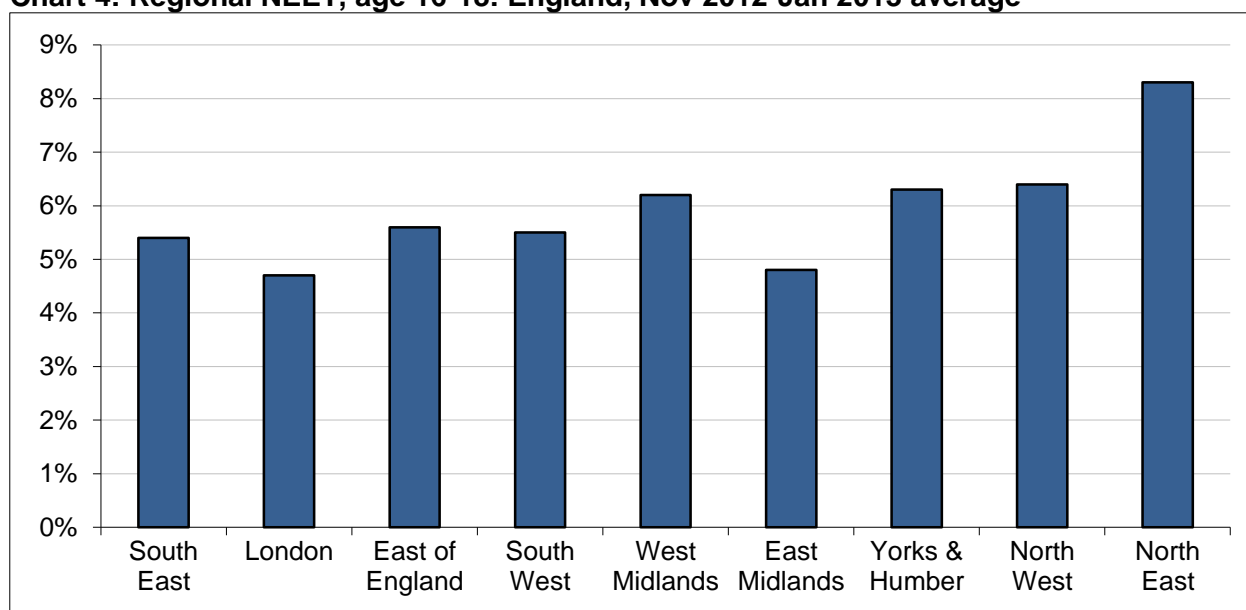
### c. Regional NEET (last updated August 2013)

The regional picture on 16-18 NEET is taken from Local Authorities' Client Caseload Information System (CCIS).

CCIS data indicates that the northern English regions have higher NEET rates, i.e. North East, North West and Yorkshire and Humberside. In comparison, London and East Midlands have the lowest NEET rates.

Note that CCIS data tend to show a lower percentage NEET than either the Participation SFR or LFS data sources.

**Chart 4: Regional NEET, age 16-18: England, Nov 2012-Jan 2013 average**



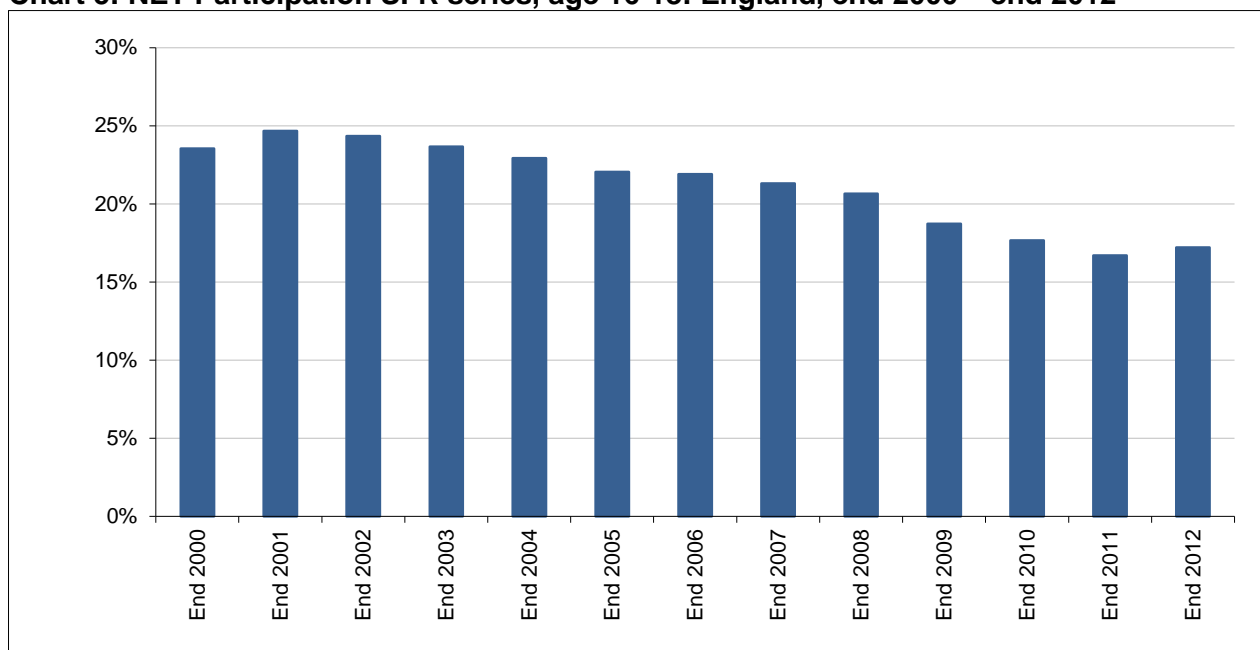
Source: Client Caseload Information System

Note: Local Authority CCIS data are published annually. In addition, regional NEET estimates for 16-24 year olds based on the LFS are now published as supplementary tables alongside this Quarterly Brief. [Both publications](#) appear on the DfE website.

#### d. NET Participation SFR series (last updated August 2013)

When examining NEET data, it is also important to contextualise it with data on the proportion of young people not in education or training (NET). These data are also taken from the SFR 'Participation in Education, Training and Employment by 16-18 Year Olds in England'.

**Chart 5: NET Participation SFR series, age 16-18: England, end 2000 – end 2012**



Source: Statistical First Release (SFR) 'Participation in Education, Training and Employment by 16-18 Year Olds in England'

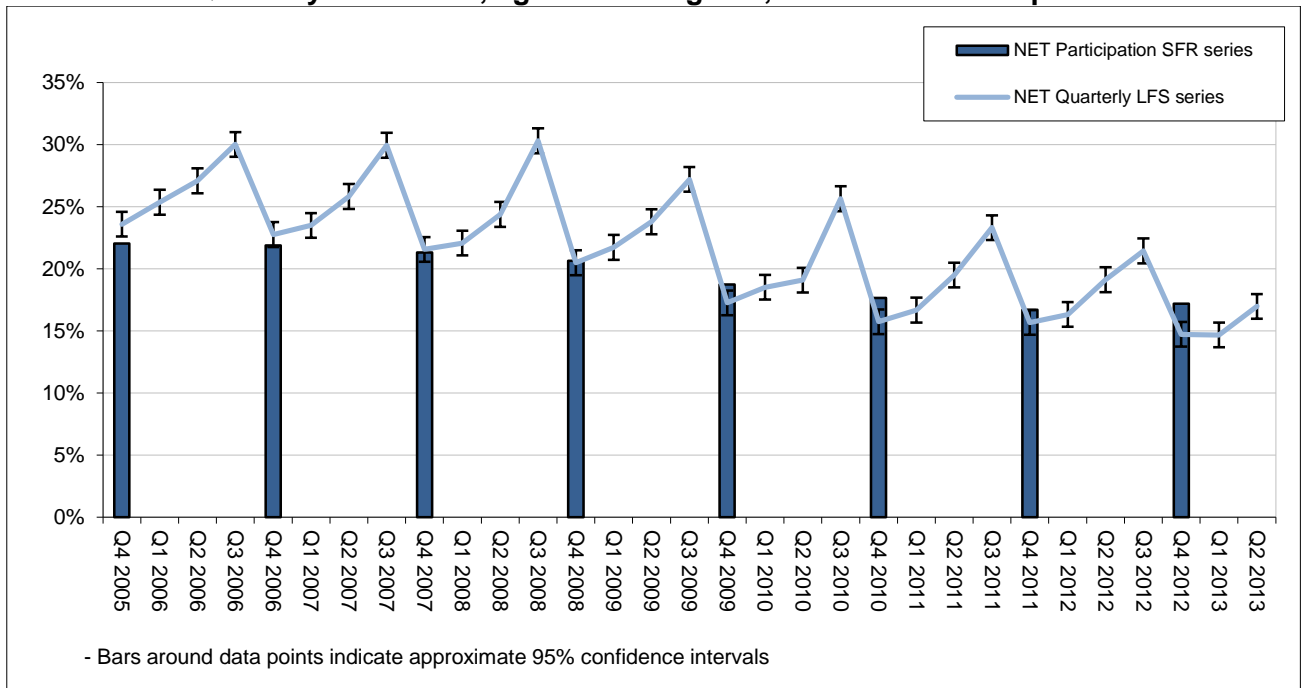
The latest Participation SFR NET rate, for end 2012, was 17.2%, a rise of 0.5 percentage points from end 2011. This was the first rise since end 2001 when 24.7% of 16-18 year olds were NET.

#### e. NET quarterly LFS series (last updated August 2013)

As with the NEET data, we can look at the in-year NET trend data using the quarterly LFS. The NET series shows the same seasonal pattern as the NEET series.

The proportion of 16-18 year olds NET fell by 2.2 percentage points to 17.0% in April-June 2013, compared to 19.1% in April-June 2012. There has been a steady decline in the April-June NET figures from 2003 to 2010, then a two year period of stagnation, followed by this year's drop. This decrease is statistically significant and is the lowest April-June rate since consistent records began in 2000.

**Chart 6: NET Quarterly LFS series, age 16-18: England, Oct-Dec 2005 to April-June 2013**



Source: Quarterly Labour Force Survey and Participation SFR.

Note: Q1 relates to the months January - March, Q2 relates to April - June, Q3 relates to July - September and Q4 relates to October - December.

## 2. Methodology and Notes

### a. NEET and NET Participation SFR series

Description	These data give the definitive measures for 16-18 NEET and NET rates in England.
Uses	These series should be used as the national time series for 16-18 year olds NEET and NET in England. The NET series should be used as context for any NEET data.
Geographical Coverage	England
Age coverage	Academic age 16 to 18
Published source	Statistical First Release (SFR) 'Participation in Education, Training and Employment by 16-18 Year Olds in England'
Primary sources	The Schools' Census Pupil Level Annual Schools' Census The Individualised Learner Record (ILR) Higher Education Statistics Agency (HESA). Higher Education Students Early Statistics (HESES) Labour Force Survey Mid-year estimates and projections of population from the Office for National Statistics (ONS)
Last period covered	End 2012
Last published	June 2013. Includes revised population estimates based on Census 2011.
Next published	June 2014

### b. NEET and NET quarterly LFS series

Description	These series are quarterly estimates of NEET and NET amongst young people from the LFS. They are not directly comparable with the Participation SFR measure. However, these statistics are produced using the same methodology as the ONS UK NEET estimate. Full details are published in the <a href="#">technical specification</a> .
Uses	These series provide more timely data on the recent trends in NEET and NET since the last Participation SFR. Trends should be assessed by comparing the current time period with the same time period in the previous year, to account for seasonal effects. For example, October-December figures should not be compared with January-March figures. The NET series should be used as context for any NEET data.
Geographical coverage	England
Age coverage	Academic age 16 to 24
Published source	Quarterly Labour Force Survey
Primary sources	Quarterly Labour Force Survey
Last Period Covered	April - June 2013
Last published	August 2013. Does <b>not</b> include revised population estimates based on Census 2011.
Next published	November 2013

### c. Regional NEET

Description	<p>This series is a 3 month average snapshot estimate of the regional NEET rate taken from the Local Authority Client Caseload Information System (CCIS) data. It is neither directly comparable with the LFS nor the Participation SFR series due to the use of 'currency' rules. The activity status of young people in education or employment is not actively checked every month, but has a shelf life depending on the type of educational course or the nature of the employment.</p> <p>For young people whose currency is lapsed a historical assumption is made on the proportion NEET, taking into account their previously reported activity.</p> <p>The combination of both factors leads to estimates of NEET in the CCIS data that tend to be lower than those estimated from the LFS or those reported in the annual Participation Statistical First Release (SFR).</p>
Uses	This series shows the data, aggregated in regions, used by Local Authorities to inform local activity and target setting.
Geographical Coverage	England
Age coverage	Academic age 16 to 18
Published source	Management information published on the DfE website as policy data: <a href="#">16- to 18-year-olds NEET</a>
Primary sources	Client Caseload Information System (CCIS)
Last Period Covered	November 2012 – January 2013 average.
Last published	May 2013
Next published	April 2014



#### **d. Scheduled revisions to previously published statistics**

Labour Force Survey (LFS) datasets are routinely reweighted in line with population estimates. The most recent update introduced a new weighting variable, PWT11, to LFS datasets from July - September 2009 onwards.

The PWT11 weights do not reflect the most recent population estimates for England and Wales, announced by the Office for National Statistics (ONS) on 16<sup>th</sup> July 2012. ONS plan to release LFS data (from 2001 onwards) reweighted in line with the 2011 Census, in 2014.

ONS have produced a comparison of the 2011 Census and the LFS labour market indicators which can be found at the following link: <http://www.ons.gov.uk/ons/rel/census/2011-census/key-statistics-for-local-authorities-in-england-and-wales/rpt-labour.html>

In contrast, this Statistical First Release reproduces statistics from the DfE '[Participation in Education, Training and Employment by 16-18 Year Olds in England](#)' SFR which rely on mid-year population estimates which have been revised based on the 2011 Census.

#### **e. National Statistics Publication**

The United Kingdom Statistics Authority has designated these statistics as National Statistics, in accordance with the Statistics and Registration Service Act 2007 and signifying compliance with the Code of Practice for Official Statistics.

Designation can be broadly interpreted to mean that the statistics:

- meet identified user needs;
- are well explained and readily accessible;
- are produced according to sound methods, and
- are managed impartially and objectively in the public interest.

Once statistics have been designated as National Statistics it is a statutory requirement that the Code of Practice shall continue to be observed.

**e. Equivalent statistics from the Welsh Assembly Government, Scottish Government and the Office for National Statistics (ONS)**

	<b>Welsh Assembly Government (WG)</b>	<b>Scottish Government (SG)</b>	<b>Office for National Statistics (ONS)</b>
Description	1. Annual SFR statistics produced in a method analogous to the DfE annual SFR.	1. Statistics based on the Annual Population Survey (APS).	1. Monthly Labour Force Survey (LFS) statistics for young people not in full-time education and not in employment -Table 14 from the Labour Market Statistics bulletin.
	2. Quarterly Statistics based on the Annual Population Survey (APS). Definition of NEET corresponds to that used in the DfE NEET Quarterly Brief	2. Annual school leaver statistics	2. Quarterly Statistics based on the Labour Force Survey (LFS). Definition of NEET corresponds to that used in the DfE NEET Quarterly Brief.
	3. Pupil destinations based on Careers Wales Survey.	3. Combination of DWP benefits data and school leaver destinations	
Uses	1. Regarded as the definitive measure of headline NEET estimates in Wales.	1. National estimates of NEET.	1. Part of wider labour market statistics; rolling 3-month average both seasonally-adjusted and not seasonally-adjusted; roughly equivalent to NEET but will include some young people in part-time education.
	2. Timely data; regional or single-age estimates based on averaging 3 years of data.	2. Proportion of young people in 'positive destinations'. The complement is roughly equivalent to NEET, but will include some young people in part-time education.	2. UK estimate, seasonally adjusted.
	3. Local area estimates of NEET.	3. Local area estimates of NEET.	
Geographical Coverage	Wales	Scotland	United Kingdom (UK)
Age coverage	Academic age 16-18, 19-24 (SFR); academic age 16-18, 19-24 (APS); interviews in October following Year 11 (Careers Wales)	Actual age 16-19.	Actual age 16-17 and 18-24.
Published source	<a href="#">1. Welsh Government   Participation of Young People in Education and the Labour Market, 2011 and 2012 (provisional)</a>	<a href="#">1. Local Area Labour Markets in Scotland: Statistics from the Annual Population Survey 2012</a>	<a href="#">1. Labour Market Statistics - August 2013</a>
	<a href="#">2. Young People Not in Education, Employment or Training (NEET), Year to 31 March 2013</a>	<a href="#">2. Summary statistics for attainment, leaver destinations and healthy living, No. 3: 2013 Edition</a>	<a href="#">2. ONS UK NEET, August 2013</a>
	<a href="#">3. Pupil Destinations from Schools in Wales, 2012</a>	<a href="#">3. More Choices More Chances</a>	



**Table 2: Not in Education and Training (NET): England**

		<b>Numbers</b>							
<b>d. NET Participation SFR series</b>		<b>16 year olds</b>	<b>17 year olds</b>	<b>18 year olds</b>	<b>16-17 year olds</b>	<b>16-18 year olds</b>	<b>16-24 year olds</b>	<b>18-24 year olds</b>	<b>19-24 year olds</b>
End 2000		82,700	116,300	222,400	198,900	421,300			
End 2001		88,300	131,500	235,200	219,800	455,100			
End 2002		80,100	135,200	242,300	215,300	457,600			
End 2003		75,700	125,700	251,200	201,500	452,700			
End 2004		74,500	124,200	245,500	198,700	444,100			
End 2005		68,300	122,300	241,000	190,500	431,500			
End 2006		67,100	117,400	250,200	184,600	434,800			
End 2007		66,700	116,000	245,600	182,700	428,300			
End 2008		52,800	114,000	253,000	166,800	419,800			
End 2009		44,800	87,400	247,200	132,200	379,400			
End 2010		42,900	81,600	230,300	124,500	354,700			
End 2011		42,500	81,700	207,500	124,200	331,700			
End 2012		44,700	74,600	220,600	119,400	340,000			
<b>Source:</b> Labour Force Survey and Admin Data		<b>Period:</b> End 2000 to End 2012							
<b>e. NET Quarterly LFS series*</b>		<b>16 year olds</b>	<b>17 year olds</b>	<b>18 year olds</b>	<b>16-17 year olds</b>	<b>16-18 year olds</b>	<b>16-24 year olds</b>	<b>18-24 year olds</b>	<b>19-24 year olds</b>
Q2 2008		79,000	141,000	261,000	220,000	480,000	2,910,000	2,691,000	2,430,000
Q3 2008		84,000	220,000	292,000	304,000	595,000	3,237,000	2,933,000	2,642,000
Q4 2008		55,000	101,000	248,000	156,000	404,000	2,794,000	2,638,000	2,390,000
Q1 2009		60,000	120,000	245,000	180,000	425,000	2,810,000	2,630,000	2,385,000
Q2 2009		73,000	137,000	257,000	210,000	467,000	2,871,000	2,661,000	2,404,000
Q3 2009		75,000	176,000	280,000	251,000	530,000	3,100,000	2,849,000	2,569,000
Q4 2009		36,000	82,000	212,000	118,000	330,000	2,710,000	2,592,000	2,379,000
Q1 2010		40,000	98,000	219,000	138,000	356,000	2,729,000	2,591,000	2,373,000
Q2 2010		42,000	108,000	219,000	150,000	370,000	2,744,000	2,594,000	2,375,000
Q3 2010		53,000	180,000	260,000	233,000	493,000	3,107,000	2,874,000	2,614,000
Q4 2010		35,000	62,000	202,000	97,000	299,000	2,769,000	2,672,000	2,471,000
Q1 2011		43,000	73,000	202,000	117,000	319,000	2,772,000	2,656,000	2,454,000
Q2 2011		54,000	99,000	216,000	152,000	368,000	2,976,000	2,824,000	2,608,000
Q3 2011		67,000	151,000	227,000	218,000	445,000	3,162,000	2,944,000	2,717,000
Q4 2011		39,000	73,000	178,000	112,000	290,000	2,736,000	2,624,000	2,446,000
Q1 2012		45,000	79,000	180,000	124,000	304,000	2,728,000	2,604,000	2,423,000
Q2 2012		51,000	95,000	209,000	146,000	355,000	2,919,000	2,773,000	2,564,000
Q3 2012		46,000	128,000	218,000	174,000	393,000	3,067,000	2,892,000	2,674,000
Q4 2012		28,000	53,000	189,000	82,000	270,000	2,733,000	2,651,000	2,462,000
Q1 2013		29,000	58,000	184,000	86,000	271,000	2,688,000	2,602,000	2,417,000
Q2 2013		35,000	85,000	193,000	119,000	312,000	2,812,000	2,692,000	2,500,000
<b>Source:</b> Labour Force Survey		<b>Period:</b> Q2 2008 to Q2 2013 time series							
*Note: the Labour Force Survey has not been reweighted to reflect the Census 2011 population so the numbers should be used with caution Note: Q1 relates to the months January-March, Q2 to April-June, Q3 to July-September and Q4 October-December									

**Table 3: Not in Employment, Education, or Training (NEET): England**

<i>Percentage</i>								
<b>a. NEET Participation SFR series</b>	<b>16 year olds</b>	<b>17 year olds</b>	<b>18 year olds</b>	<b>16-17 year olds</b>	<b>16-18 year olds</b>	<b>16-24 year olds</b>	<b>18-24 year olds</b>	<b>19-24 year olds</b>
End 2000	6.7%	7.4%	12.2%	7.0%	8.7%			
End 2001	7.4%	9.1%	12.2%	8.2%	9.5%			
End 2002	7.6%	9.0%	12.2%	8.3%	9.6%			
End 2003	7.0%	7.5%	12.4%	7.2%	9.0%			
End 2004	6.9%	8.3%	12.3%	7.6%	9.2%			
End 2005	7.4%	9.5%	13.2%	8.5%	10.0%			
End 2006	6.7%	8.9%	13.5%	7.8%	9.7%			
End 2007	6.1%	8.8%	13.8%	7.4%	9.5%			
End 2008	5.8%	9.1%	16.2%	7.5%	10.4%			
End 2009	5.5%	7.8%	16.5%	6.7%	10.0%			
End 2010	5.1%	8.2%	13.8%	6.6%	9.1%			
End 2011	5.5%	8.5%	15.3%	7.0%	9.8%			
End 2012	5.8%	7.3%	15.5%	6.6%	9.6%			
<i>Source: Labour Force Survey and Admin Data</i>			<i>Period: End 2000 to End 2012</i>					
<b>b. NEET Quarterly LFS series*</b>	<b>16 year olds</b>	<b>17 year olds</b>	<b>18 year olds</b>	<b>16-17 year olds</b>	<b>16-18 year olds</b>	<b>16-24 year olds</b>	<b>18-24 year olds</b>	<b>19-24 year olds</b>
Q2 2008	7.2%	9.8%	14.9%	8.5%	10.6%	14.0%	15.5%	15.6%
Q3 2008	8.0%	15.5%	15.6%	11.9%	13.1%	16.4%	17.7%	18.0%
Q4 2008	6.3%	8.3%	15.9%	7.3%	10.3%	14.2%	16.0%	16.1%
Q1 2009	6.6%	10.0%	16.8%	8.4%	11.2%	15.5%	17.4%	17.5%
Q2 2009	8.3%	11.5%	16.3%	9.9%	12.1%	15.8%	17.5%	17.7%
Q3 2009	8.2%	15.0%	16.8%	11.6%	13.4%	17.8%	19.5%	20.0%
Q4 2009	4.6%	7.4%	15.4%	6.0%	9.1%	14.8%	17.2%	17.4%
Q1 2010	5.1%	8.6%	16.9%	7.0%	10.2%	15.3%	17.6%	17.7%
Q2 2010	5.2%	10.1%	15.2%	7.7%	10.3%	14.4%	16.2%	16.4%
Q3 2010	6.2%	15.0%	19.1%	10.8%	13.5%	17.1%	18.8%	18.8%
Q4 2010	4.2%	6.6%	14.0%	5.4%	8.3%	15.5%	18.2%	18.9%
Q1 2011	5.2%	7.9%	12.2%	6.5%	8.4%	15.4%	17.7%	18.6%
Q2 2011	6.6%	9.1%	14.5%	7.8%	10.1%	16.4%	18.6%	19.3%
Q3 2011	7.7%	15.5%	18.4%	11.6%	13.9%	19.5%	21.5%	22.0%
Q4 2011	5.1%	8.1%	14.9%	6.6%	9.4%	16.1%	18.5%	19.1%
Q1 2012	6.2%	9.0%	13.7%	7.6%	9.7%	15.9%	18.1%	18.8%
Q2 2012	5.9%	9.7%	15.9%	7.8%	10.5%	16.3%	18.4%	18.8%
Q3 2012	4.2%	12.8%	14.9%	8.6%	10.7%	17.2%	19.4%	20.1%
Q4 2012	3.6%	5.2%	14.5%	4.4%	7.9%	14.9%	17.6%	18.0%
Q1 2013	4.6%	6.0%	13.8%	5.4%	8.2%	15.1%	17.6%	18.2%
Q2 2013	5.0%	8.0%	14.4%	6.6%	9.1%	15.5%	17.8%	18.3%
<i>Source: Labour Force Survey</i>			<i>Period: Q2 2008 to Q2 2013 time series</i>					
<p><b>Note: the Labour Force Survey has not been reweighted to reflect the Census 2011 population</b>  <b>Note: Q1 relates to the months January-March, Q2 to April-June, Q3 to July-September and Q4 October-December</b></p>								
<b>c. Regional NEET</b>	<b>16 year olds</b>	<b>17 year olds</b>	<b>18 year olds</b>	<b>16-17 year olds</b>	<b>16-18 year olds</b>	<b>16-24 year olds</b>	<b>18-24 year olds</b>	<b>19-24 year olds</b>
South East	3.1%	5.2%	8.1%	4.2%	5.4%			
London	2.3%	3.6%	8.3%	3.0%	4.7%			
East of England	3.3%	5.3%	8.3%	4.3%	5.6%			
South West	3.0%	5.3%	8.2%	4.2%	5.5%			
West Midlands	3.7%	6.1%	8.9%	4.9%	6.2%			
East Midlands	3.0%	4.9%	6.7%	4.0%	4.8%			
Yorks & Humber	3.7%	6.3%	8.8%	5.1%	6.3%			
North West	3.7%	6.2%	9.3%	4.9%	6.4%			
North East	4.1%	7.5%	13.7%	5.8%	8.3%			
<i>Source: Client Caseload Information System</i>			<i>Period: Nov 2012 - Jan 2013 average</i>					

**Table 4: Not in Education and Training (NET): England**

<i>Percentage</i>								
<b>d. NET Participation SFR series</b>	<b>16 year olds</b>	<b>17 year olds</b>	<b>18 year olds</b>	<b>16-17 year olds</b>	<b>16-18 year olds</b>	<b>16-24 year olds</b>	<b>18-24 year olds</b>	<b>19-24 year olds</b>
End 2000	13.6%	19.4%	38.0%	16.5%	23.5%			
End 2001	14.0%	21.5%	39.1%	17.7%	24.7%			
End 2002	12.8%	21.3%	39.2%	17.1%	24.3%			
End 2003	11.9%	19.9%	39.0%	15.9%	23.7%			
End 2004	11.4%	19.4%	38.4%	15.3%	22.9%			
End 2005	10.5%	18.5%	37.1%	14.6%	22.0%			
End 2006	10.1%	17.9%	37.4%	14.0%	21.9%			
End 2007	9.9%	17.3%	37.0%	13.6%	21.3%			
End 2008	7.9%	16.7%	37.2%	12.3%	20.6%			
End 2009	6.8%	12.9%	35.6%	9.9%	18.7%			
End 2010	6.5%	12.3%	33.5%	9.4%	17.7%			
End 2011	6.6%	12.3%	30.9%	9.5%	16.7%			
End 2012	6.9%	11.4%	32.7%	9.2%	17.2%			
<i>Source: Labour Force Survey and Admin Data</i>			<i>Period: End 2000 to End 2012</i>					
<b>e. NET Quarterly LFS series*</b>	<b>16 year olds</b>	<b>17 year olds</b>	<b>18 year olds</b>	<b>16-17 year olds</b>	<b>16-18 year olds</b>	<b>16-24 year olds</b>	<b>18-24 year olds</b>	<b>19-24 year olds</b>
Q2 2008	12.2%	21.0%	39.9%	16.7%	24.4%	48.4%	57.3%	60.1%
Q3 2008	13.4%	32.5%	44.1%	23.3%	30.3%	53.9%	62.4%	65.4%
Q4 2008	8.7%	15.2%	36.9%	12.0%	20.5%	46.5%	56.0%	59.2%
Q1 2009	9.3%	18.1%	37.6%	13.8%	21.7%	47.0%	56.2%	59.2%
Q2 2009	11.4%	20.8%	38.8%	16.1%	23.8%	47.8%	56.6%	59.5%
Q3 2009	11.7%	27.5%	41.6%	19.6%	27.2%	51.9%	60.7%	63.9%
Q4 2009	5.8%	12.4%	33.5%	9.2%	17.3%	45.1%	54.9%	58.2%
Q1 2010	6.5%	14.5%	34.8%	10.6%	18.5%	45.3%	54.8%	57.8%
Q2 2010	6.9%	16.1%	33.4%	11.7%	19.1%	45.6%	54.7%	58.2%
Q3 2010	8.7%	26.8%	40.9%	18.1%	25.6%	51.9%	61.2%	64.3%
Q4 2010	5.5%	10.1%	31.2%	7.7%	15.7%	46.1%	56.2%	60.1%
Q1 2011	6.7%	11.8%	31.4%	9.2%	16.7%	45.9%	55.7%	59.5%
Q2 2011	8.4%	16.1%	33.9%	12.2%	19.5%	49.2%	58.9%	62.7%
Q3 2011	10.7%	23.9%	35.1%	17.3%	23.3%	52.1%	61.2%	65.3%
Q4 2011	6.5%	11.7%	28.7%	9.1%	15.7%	45.5%	54.8%	58.7%
Q1 2012	7.3%	12.6%	29.0%	10.0%	16.3%	45.3%	54.5%	58.3%
Q2 2012	8.3%	15.5%	33.1%	11.9%	19.1%	48.2%	57.3%	60.9%
Q3 2012	7.7%	20.7%	35.5%	14.3%	21.4%	50.9%	60.1%	63.7%
Q4 2012	4.9%	8.7%	29.5%	6.8%	14.7%	45.8%	55.6%	59.7%
Q1 2013	5.1%	8.7%	29.4%	7.1%	14.7%	44.8%	54.3%	58.1%
Q2 2013	5.9%	12.8%	32.8%	9.5%	17.0%	46.5%	56.2%	59.5%
<i>Source: Labour Force Survey</i>			<i>Period: Q2 2008 to Q2 2013 time series</i>					
<i>*Note: the Labour Force Survey has not been reweighted to reflect the Census 2011 population</i>								
<i>Note: Q1 relates to the months January-March, Q2 to April-June, Q3 to July-September and Q4 October-December</i>								

Additional tables are published with this brief – these show a regional breakdown of the quarterly NEET statistics for 16-24, 18-24 and 19-24 year olds, and time-series data from 2001. Please see the [DfE NEET Statistics - Quarterly Brief- April to June 2013](#) web-page.