

Key Figures For WORKSTEP Programme

October 2010

Contents

- Background 3
- Results 4
 - Table 1: Supported Employment starts 4
 - Table 2: Number of individuals *in* Supported Employment *at the end of* specified period 4
 - Table 3: Number of individuals *who received* Supported Employment *during* specified period 4
 - Table 4: Progressions to Open Employment 5
 - Chart 1: Number of individuals *in* Supported Employment *at the end of* each month 6
 - Chart 2: Supported Employment starts – 3 month rolling average 6
 - Chart 3: Supported Employment leavers – 3 month rolling average 7
 - Chart 4: Progressions to Open Employment – 3 month rolling average 8
 - Chart 5: Progressions to Open Employment which are sustained – 3 month rolling average 9

Background

The WORKSTEP programme has now ceased to operate. The previous group of disability employment programmes, Workprep, WORKSTEP, and the Job Introduction Scheme have been replaced by a single programme, Work Choice, which was launched on 25th October 2010. Work Choice will sit alongside the Work Programme, to be introduced in 2011, providing more intensive support for disabled people with more complex barriers to finding and staying in employment.

The WORKSTEP employment programme provided support to disabled people facing complex barriers to getting and keeping a job. It also offered practical assistance to employers.

A person could benefit from WORKSTEP if they had a disability and wished to have a job where they could:

- develop and improve their job skills
- have the opportunity to develop and progress through training and support
- have the right kind of support and encouragement when they needed it

WORKSTEP gave the opportunity to work in a variety of different jobs through a wide range of organisations from small high street shops to national companies. Participants on the programme earned the same wage as non-disabled colleagues doing the same or similar work.

Results

Table 1: Supported Employment starts

1 st April 2010 – 30 th June 2010	09/10	since 2001
850	3,690	28,790

The number of starts to Supported Employment within specified period. Some individuals may be counted more than once.

Table 2: Number of individuals *in* Supported Employment *at the end of* specified period

Current (1 st July 10)	09/10 (1 st April 10)
13,470	13,590

The number of individuals who are in Supported Employment at the end of specified period. An individual can be counted only once.

Table 3: Number of individuals *who received* Supported Employment *during* specified period

1 st April 2010 – 30 th June 2010	09/10	since 2001
14,430	17,190	37,510

The number of individuals who have been in Supported Employment for at least one day during specified period. An individual can be counted only once.

Table 4: Progressions to Open Employment

1 st April 2010 – 30 th June 2010	09/10	since 2001
460	1,540	9,460

The number of progressions to Open Employment within specified period. Some individuals may be counted more than once.

The source of all information presented in the report is the September 2010 version of the WORKSTEP Evaluation Database.

All figures are subject to small changes when compared with earlier version of the databases.

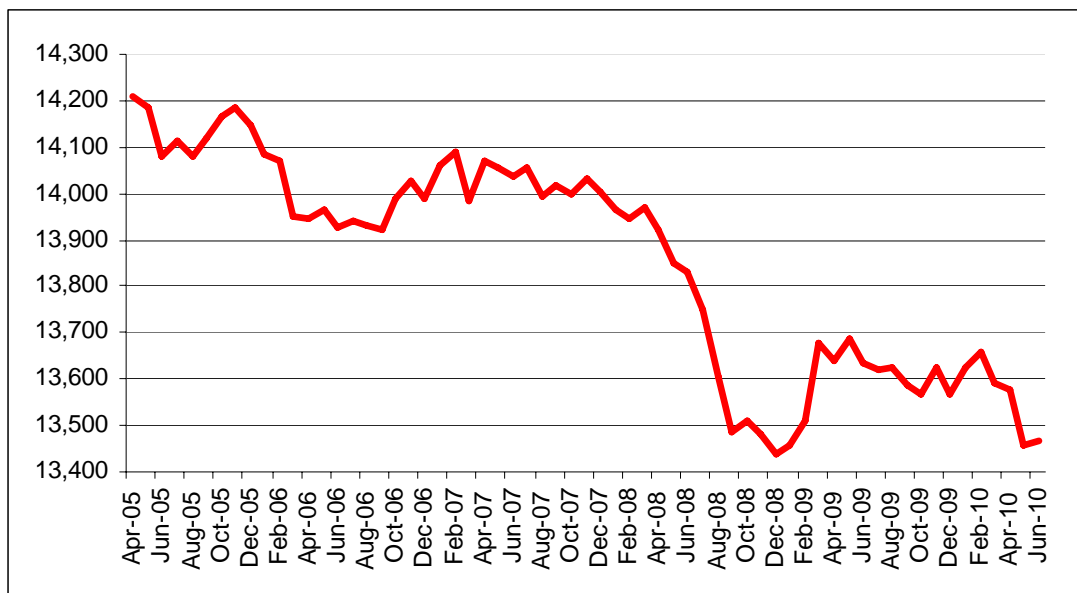
All figures are rounded to the nearest ten.

Tables 1-4 show key figures for the WORKSTEP Programme up to and including June 2010 data¹. There are three different time periods for which key figures were calculated: the current financial year period (1st April 10 – 30th June 10, 3 months), the previous financial year (1st April 09 – 31st March 10, 12 months) and a longer period looking at the to-date cumulative totals from April 2001 (1st April 01 – 30th June 10, 9 years and 3 months). Comparison of figures should be made with caution given the different time periods described above.

Note also that some figures are for individuals (each individual was counted only once) and some figures are for spells on the programme (some individuals may be counted more than once). This is clearly indicated in the tables' footnotes.

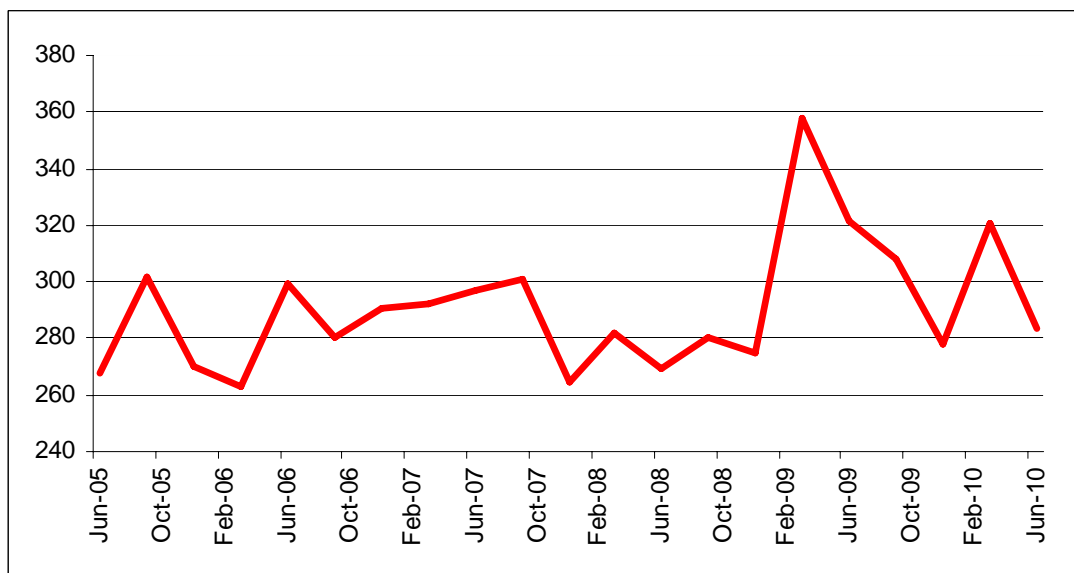
¹ Data is available to September 2010 but analysis shows that a delay of three months is required before the data is complete.

Chart 1: Number of individuals *in* Supported Employment *at the end of each month*



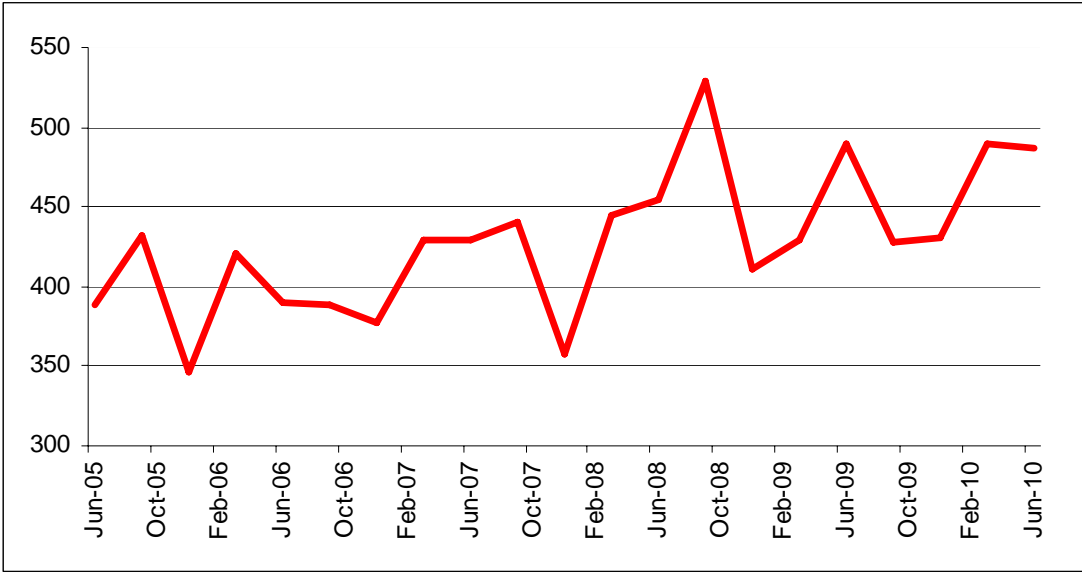
Source: WORKSTEP Evaluation Database, September 10.

Chart 2: Supported Employment starts – 3 month rolling average



Source: WORKSTEP Evaluation Database, September 10.

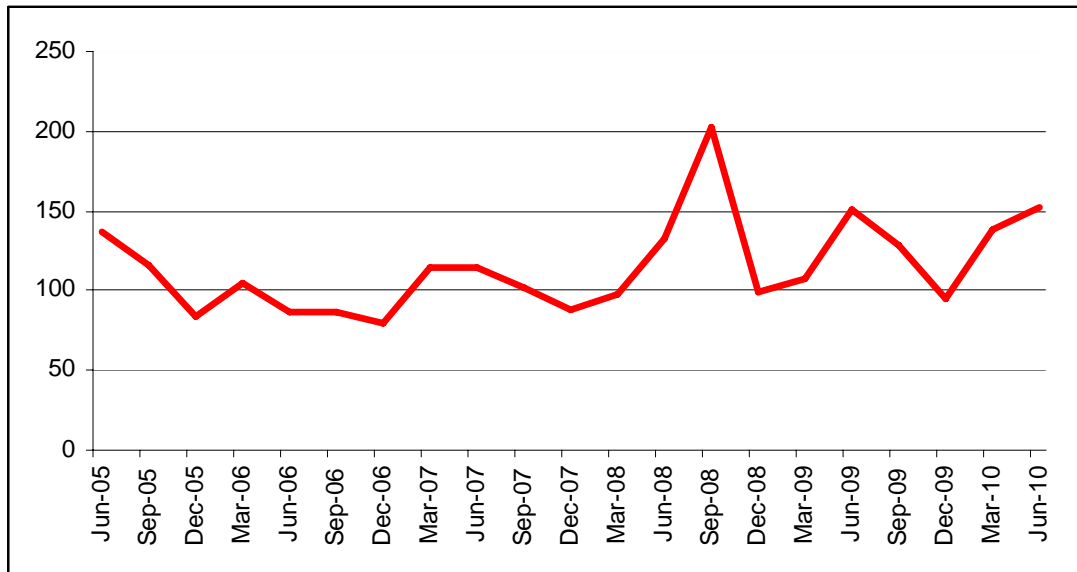
Chart 3: Supported Employment leavers – 3 month rolling average



Note: The increase in the number of individuals leaving Supported Employment in August and September 2008, can be attributed to an increase in the numbers progressing to Open Employment. See chart 4.

Source: WORKSTEP Evaluation Database, September 10.

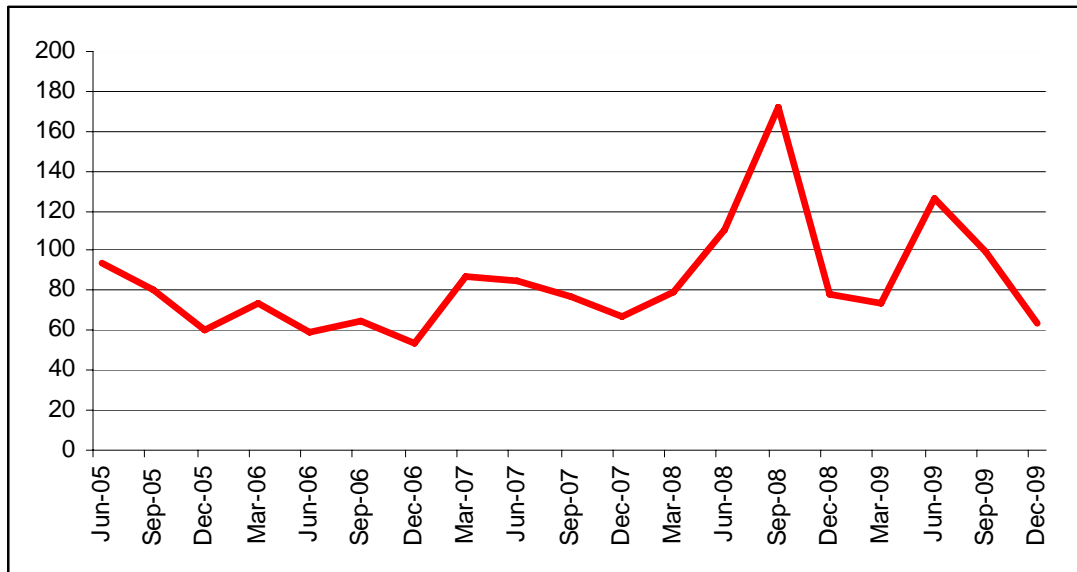
Chart 4: Progressions to Open Employment – 3 month rolling average



Note: The increase in the number of progressions to Open Employment in August and September 2008 can be attributed to around 250 extra progressions than would normally be expected, from clients whose provider is Shaw Trust. The amount DWP pays to providers who progress a client to Open Employment, increased around September 2008. This may be a factor in the increase in the numbers progressing to Open Employment.

Source: WORKSTEP Evaluation Database, September 10.

Chart 5: Progressions to Open Employment which are sustained – 3 month rolling average



Source: WORKSTEP Evaluation Database, September 10.

Gary Gifford (Gary.Gifford@dwp.gsi.gov.uk)

Department for Work and Pensions