

First Release

14th July 2010

Coverage: Great Britain

Theme: People and Places

DWP Department for
Work and Pensions

Issued by:
Information Directorate
Department for Work and
Pensions

Telephone:
Press Office: 0203 267 5144

Website:
www.dwp.gov.uk

Statistician:

Stuart Grant
Information Directorate
Department for Work and
Pensions
Room BP5201
Benton Park Road
Longbenton
Newcastle-upon-Tyne
NE98 1YX

Telephone: 0191 2166263
Email:
stuart.grant@dwp.gsi.gov.uk

Next publication:
11th August 2010

DWP STATISTICAL SUMMARY

This Statistical Summary contains statistics produced by the Department for Work and Pensions (DWP) on Housing Benefit / Council Tax Benefit caseload and inactive benefit early estimates. Other monthly outputs may be added in the future – user views on the format of this release are welcome via the contact details in the margin.



The Housing Benefit / Council Tax Benefit caseload statistics are full National Statistics;

The inactive benefit early estimates are Experimental Statistics – for more information see the notes section.

National Statistics for the main DWP benefits are still released on quarterly basis and can be viewed at: http://research.dwp.gov.uk/asd/statistical_summaries.asp

The early estimates for working-age inactive benefit client groups are released monthly and are designed to give indicative, timely information; they are not a substitute for the National Statistics. They will be replaced by the quarterly National Statistics covering the same period when they are published. The National Statistics are the finalised figures.

Key findings

Housing Benefit /Council Tax Benefit



- At April 2010, the total number of people claiming Housing Benefit was 4.75 million, with 5.78 million claiming Council Tax Benefit.
- The total number of people claiming either Housing Benefit or Council Tax Benefit was 6.31 million at April 2010, with 4.22 million claiming both benefits.
- Over 3.78 million Housing Benefit recipients were single at April 2010, with almost two-thirds of these being female. Of the 1.56 million recipients with at least one child dependant, just over one million of these were single.

Further information can be viewed:
http://statistics.dwp.gov.uk/asd/asd1/hb_ctb/hbctb_arc.asp

Early estimates for inactive benefits

- Experimental statistics show that the Employment and Support Allowance/ incapacity benefits (ESA/IB) early estimate for May 2010 is 2.61 million. The latest National Statistic for this client group stands at 2.62 million claimants in November 2009.
- Experimental statistics show that the working-age Income Support lone parent (ISLP) early estimate is 675 thousand as at the end of May 2010. The latest National Statistic caseload figure for this client group stands at 696 thousand in November 2009.

Further information can be viewed:
http://statistics.dwp.gov.uk/asd/early_ests.asp

Contents

1. Housing Benefit / Council Tax Benefit

	<i>page</i>
1.1 Housing Benefit / Council Tax Benefit recipients	3

2. Early Estimates for Working-Age Inactive Benefit Client Groups

2.1 Employment and Support Allowance / incapacity benefits client group	4
2.2 Income Support lone parent client group	5
Notes	6



1. Housing Benefit / Council Tax Benefit

Table 1.1 Housing Benefit (HB) / Council Tax Benefit (CTB) recipients: April 2010

	All HB recipients		All CTB recipients	
	Number (thousands)	Average Award (£pw)	Number (thousands)	Average Award (£pw)
TOTAL	4,746.32	84.24	5,780.20	16.02
Passported Benefit				
In receipt of JSA (IB), IS, ESA (IB), PC (GC)	3,262.04	87.09	3,973.07	16.89
Not in receipt of JSA (IB), IS, ESA (IB), PC (GC)	1,479.32	77.87	1,792.16	14.07
Family Type				
Single, no child dependant	2,697.84	76.01	3,277.59	14.75
Single with child dependant(s)	1,082.50	101.07	1,057.52	15.59
Couple, no child dependant	493.13	72.04	924.57	18.97
Couple with child dependant(s)	472.85	104.50	520.52	19.65
Client Group				
Aged under 65	3,467.37	89.53	3,549.78	16.00
Aged 65 or over	1,278.78	70.01	2,230.23	16.05
Tenancy Type				
Social Rented Sector				
Local Authority Tenants	1,511.68	67.86		
Registered Social Landlord Tenants	1,783.22	77.43		
Private Rented Sector				
Private Regulated Tenants	49.99	76.10		
Private Deregulated Tenants:				
Local Housing Allowance Tenants	1,043.86	113.38		
Non-Local Housing Allowance Tenants	354.63	103.94		

Source: Single Housing Benefit Extract (SHBE)

Notes relating to table 1.1:

- Housing Benefit and Council Tax Benefit recipients are individual claimants who had a live in payment claim on Thursday 8th April. Council Tax Benefit recipients exclude Second Adult Rebate cases.
- Passported Benefit and Tenancy Type breakdowns are as recorded within the Local Authorities Housing Benefit/Council Tax Benefit administration systems.
- Family Type breakdown was new in the June 2010 release. It is derived from a combination of information on recipients' partners and number of child dependants.
- Client Group breakdown is derived from a combination of information on passported benefit and recipient's age.
- Caseload figures are rounded to the nearest 10. Components may not sum to total due to independent rounding.
- Average award figures are shown as pounds per week and rounded to the nearest penny.
- Local Housing Allowance (LHA) Tenants may include a small number of non-LHA cases making a new claim since 6 April 2008. This will include recipients in caravan accommodation.

Latest statistical data available from: http://statistics.dwp.gov.uk/asd/asd1/hb_ctb/hbctb_arc.asp

2. Early Estimates for Working-Age Inactive Benefit Client Groups

In the January 2010 first release, we introduced some small changes to the methodology for deriving our early estimates. These changes have improved accuracy, meaning that we can present numbers rounded to five thousand for November 2009 estimates onwards (compared to 10 thousand previously).

2.1 Employment and Support Allowance / incapacity benefits (ESA/IB) client group

Table 2.1: Working-age ESA/IB client group February 2009 to May 2010

Time Series	thousands	
	National Statistic	Early Estimate
Feb-09	2,603.54	
May-09	2,621.43	
Aug-09	2,632.74	
Nov-09	2,618.38	
Dec-09		2,615
Jan-10		2,610
Feb-10		2,610
Mar-10		2,610
Apr-10		2,615
May-10		2,610

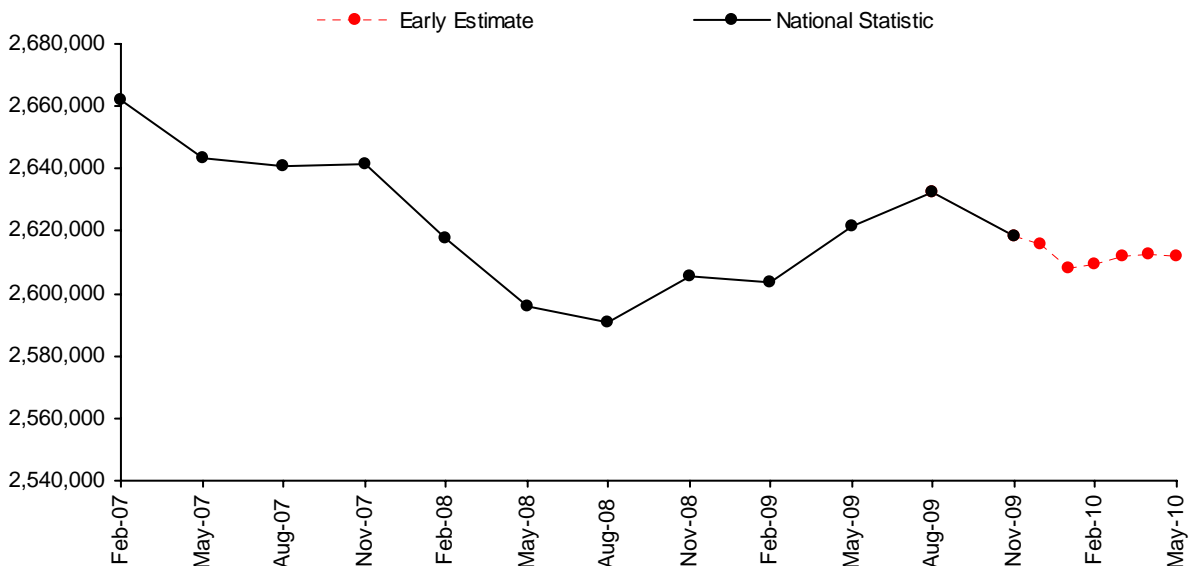
The working-age **ESA/IB** early estimate for May 2010 is **2.61 million** to the nearest 5,000. This represents a fall of 0.2 per cent since November 2009 (the latest National Statistic).

Final figures for the quarter ending February 2010 will be released on 11th August 2010. **The most recent National Statistics show 2.62 million individuals were in the ESA/IB client group at November 2009.** See: <http://statistics.dwp.gov.uk/asd/tabtool.asp>

These figures are estimates of the final National Statistic, to give an indication of their accuracy, over the past year the early estimates have been revised by an average of 0.2 per cent. See notes section for more information.

The age at which women reach State Pension age will gradually increase from 60 to 65 between April 2010 and April 2020. Please see the Welfare Reform section of the Notes for further information.

Figure 2.1: National Statistics to November 2009 and early estimates of numbers in working age ESA/IB client group: December 2009 to May 2010



Notes relating to figure 2.1 and table 2.1:

1. ESA/IB: From November 2008 ESA replaced Incapacity Benefit (IB) and Income Support paid on the grounds of incapacity for new claims from 27 October 2008. Prior to this the "incapacity benefits group" referred to claimants of IB or Severe Disablement Allowance including people claiming Income Support on the grounds of incapacity.
2. The red dotted line in the chart above emphasises that the figures are only estimates. Estimates from November 2009 are rounded to the nearest 5,000 following methodological improvements to the estimation process.
3. Source data: *DWP Information Directorate: Work and Pensions Longitudinal Study*
4. When the next quarterly National Statistics are published they will be included as the fourth quarterly National Statistic in Table 2.1, and the monthly early estimates for this quarter will be removed from Table 2.1.

2.2 Income Support lone parent (ISLP) client group

Table 2.2 ISLP client group February 2009 to May 2010

Time Series	thousands	
	National Statistics	Early Estimate
Feb-09	736.04	
May-09	720.48	
Aug-09	715.73	
Nov-09	695.72	
Dec-09		695
Jan-10		695
Feb-10		690
Mar-10		680
Apr-10		675
May-10		675

The working-age ISLP early estimate for May 2010 is **675 thousand** to the nearest 5,000. This represents a fall of 2.7 per cent since November 2009 (the latest National Statistic).

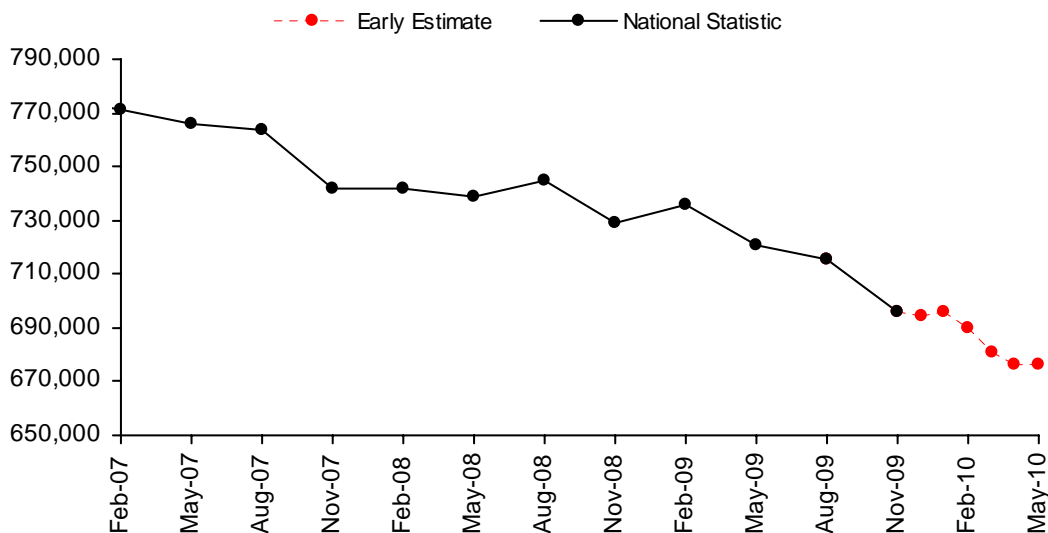
National Statistics are available for quarters up to the end of November 2009. Final figures for the quarter ending February 2010 will be released on 11th August 2010. **The most recent National Statistics show 696 thousand individuals were in the ISLP client group at November 2009.** See: <http://statistics.dwp.gov.uk/asd/tabtool.asp>

The number of lone parents claiming Income Support has been affected by the Lone Parent Obligations policy changes which came into effect from 24 November 2008. For more information see the notes section.

The figures are estimates of the final National Statistic, to give an indication of their accuracy, over the past year the early estimates have been revised by an average of 0.4 per cent. See the notes section for more information.

The age at which women reach State Pension age will gradually increase from 60 to 65 between April 2010 and April 2020. Please see the Welfare Reform section of the Notes for further information.

Figure 2.2: National Statistics to November 2009 and early estimates of numbers in working age ISLP client group: December 2009 to May 2010



Notes relating to figure 2.2 and table 2.2:

- ISLP: claimants on IS with child under 16 and no partner.
New and repeat customers with the following conditions will no longer be entitled to Income Support:
- A youngest child aged 12 or over from 24 November 2008;
- A youngest child aged 10 or over from 26 October 2009.
- The red dotted line in the chart above emphasises that the figures are only estimates. Estimates from November 2009 are rounded to the nearest 5,000 following methodological improvements to the estimation process.
- Source data: *DWP Information Directorate: Work and Pensions Longitudinal Study*
- When the next quarterly National Statistics are published they will be included as the fourth quarterly National Statistic in Table 2.2, and the monthly early estimates for this quarter will be removed from Table 2.2.

Latest statistical data available from: http://statistics.dwp.gov.uk/asd/early_ests.asp

NOTES

1. The Statistical Summary

The Department for Work and Pensions (DWP) publish a Statistical Summary document each month. It is used for the release of a wide range of DWP statistics

The DWP Statistical Summary brings together key National Statistics on DWP administered benefits, some employment programmes and JSA (Jobseeker's Allowance) sanctions and vacancies. To provide a more complete picture of DWP responsibility, statistics on Housing Benefit and Council Tax Benefit (administered by Local Authorities) and the Child Support Agency are also included.

The Summary is published monthly, containing Housing Benefit and Council Tax Benefit together with early estimates of inactive benefit caseloads. Each quarter (in May, August, November and February), a larger document also contains the detail of DWP administered benefits, some employment programmes, JSA sanctions, vacancies and the Child Support Agency.

Alongside the Statistical Summary, there are a large number of tables which enable the user to delve in to the detail. These are provided to the user as:

- The DWP Tabulation Tool – for DWP administered benefits and employment programmes the Tabulation Tool provides the user with an interactive tool to select one of thousands of possible tabulations. This is available at: <http://statistics.dwp.gov.uk/asd/tabtool.asp>. A similar Tabulation Tool, derived from 5% sample data, is also available. Whenever possible, 100% data should be used in preference to 5% estimates, as these are both more accurate and form DWP's headline statistics. Some statistics remain outside the scope of the Tabulation Tool but will continue to be available via the internet as pre-defined summary tables.
- Identical numbers via Nomis (<https://www.nomisweb.co.uk/Default.asp>)
- Separate detailed tables on Housing Benefit and Council Tax Benefit; Employment and Support Allowance; Claimants on out of work benefits
- Tables broken down by Lower Super Output Area (LSOA)
- Other tables and background information via links on the Tabulation Tool pages (e.g. links to long time series spreadsheets; descriptions of the benefit.)

The National Statistics paper "DWP statistics transformed: the modernisation of the DWP's data sources and statistical publications" announced major changes to the National Statistics the Department publishes in 2005. Much of this content is still relevant and is available from:

http://statistics.dwp.gov.uk/asd/asd1/stats_consultation/modstats.pdf

2. Links to further information

For each statistic in this publication, access to more detailed statistics and methodology are available by clicking on the following web links.

Housing Benefit & Council Tax Benefit caseload statistics:

http://statistics.dwp.gov.uk/asd/asd1/hb_ctb/hbctb_arc.asp

Early estimates for working-age inactive benefit client groups:

http://statistics.dwp.gov.uk/asd/early_ests.asp

3. Early Estimates

The early estimates are designed to give indicative, timely information ahead of the publication of full National Statistics. They are not a substitute for the National Statistics and will be replaced when the final quarterly National Statistics covering the same period are published.

To give an indication of their accuracy, over the past year the early estimates for ESA/IB have been revised by an average of 0.19 per cent, with the biggest revision being 0.35 percent and the smallest being 0.07 percent. The early estimates for ISLP have been revised by an average of 0.41 per cent, with the biggest revision being 1.06 percent and the smallest being 0.01 percent.

More detailed information can be accessed via the following links:

http://statistics.dwp.gov.uk/asd/asd1/early_ests/technical_document_final.pdf

http://statistics.dwp.gov.uk/asd/asd1/early_ests/QandA_Early_Estimates_final.pdf

4. Welfare Reform

The Lone Parent Obligation policy came into effect from 24 November 2008; Lone Parents (LPs) with a youngest child aged 12 or over were no longer able to make a new or repeat claim for Income Support (IS) solely on the basis of their parental status. Existing IS LPs with a youngest child aged 12 or over are having their eligibility removed over a period of time commencing 2 March 2009. From October 2009 this policy was extended to LPs with a youngest child aged 10 or 11 and from October 2010 the policy will be extended to LPs with a youngest child aged 7 or over.

Most effected LPs will leave IS and claim Jobseeker's Allowance (JSA). However, there are exceptions to these rules where the youngest child can legitimately be over the ages mentioned above. Similarly, some former LPs remain on IS for other reasons (e.g. they have a long term caring responsibility and claim Carer's Allowance). Through analysis of the effected claimants over the next quarters, it can be decided if there is a requirement to change the structure of IS LP statistics. In the meantime, the IS LP series will continue to be defined as 'single IS claimants with a child under 16'.

The age at which women reach State Pension age will gradually increase from 60 to 65 between April 2010 and April 2020. The first quarterly statistical summary to be affected will be the November 2010 publication and the first early estimates to be affected were released in June 2010. The changes will introduce a small increase to the number of working age benefit recipients and a small reduction to the number of pension age recipients. There will also be changes to the way we report benefit recipients as a proportion of the working population. We will provide more information on how the change affects our statistics, including advice on making time series comparisons, alongside their publication. For general information about the change to State Pension age, please see:

http://www.direct.gov.uk/en/Pensionsandretirementplanning/StatePension/DG_4017919

5. Known Issues, Changes and Revisions to the Statistical Summary

Additional tables for HB / CTB caseload statistics (<http://statistics.dwp.gov.uk/asd/hbctb.asp>) include a new breakdown of recipients aged under 65 and aged 65 and over for both HB (table 8a) and CTB (table 14a). This table has replaced the current 'working age / elderly age' breakdown (tables 8 and 14 respectively) in this release.

6. Notification of changes to the Summary

The next quarterly release of the Statistical Summary in August 2010 will include the following changes:

- Section 1.3, 1.4 and Table 1.2 in the Summary document will be changed to relate to combined Incapacity Benefit, Severe Disablement Allowance and Employment and Support Allowance data. This will provide a consistent time series. In Table 1.2, the Working Age/ Pension Age split will be replaced with a "benefit type" split to show the numbers on each of the three component benefits.
- New statistics giving further detail on ESA stage of process and claimants' personal characteristics
- Housing Benefit and Council Tax Benefit Excel Tables 6, 7, 12, and 13 will include an additional breakdown showing the number of benefit recipients in employment.
- A number of improvements will be made to the JSA sanctions statistics in August 2010. Most notably, sanctions for Failure to Attend a Back to Work session will be retrospectively included back to April 2009. Flexible New Deal sanctions began to be applied from October 2009. New categories will be introduced to the JSA sanctions tabulation tool to report these new sanctions where relevant. These will be applied to both varied and fixed length sanction referrals.
Prior to April 2010, a Failure to Attend Advisory Interview attracted an entitlement decision. Since then, it has instead attracted a Fixed length sanction of between 1 and 2 weeks. This change will be reflected in the way we report both fixed length sanctions and entitlement decisions.
Following consultation with users, data on Opinions relating to sanctions decisions will be withdrawn.
- Jobcentre Plus region will be re-instated in the New Deal for Lone Parents Tabulation Tool in August.
- Claimants of DLA or AA from October 2008 onwards with a main disabling condition of "Obesity" will now be classified in the "Other" group, rather than the "Mental Health Causes" group.
- The ability to perform a benefit combination time series of working age percentage of population has been removed due to a formatting error in those tables. Contrary to the note in the May 2010 release, these tables will now not be replaced in the August 2010 release.
- The "MIG/Non-MIG" indicator on the 100% benefit Tabulation Tool for Income Support will be reinstated in the August 2010 release

On 31st August 2010 a new breakdown of out-of-work benefit claimants (JSA, IB/ESA, IS, Others) will be produced at Census Output Area (COAs) level for England and Wales. These Experimental Official Statistics

have been developed for local partners to use in the operational planning of worklessness and social inclusion services. These data will be rounded to avoid the potential for disclosure of confidential information. These data will not be published in Scotland as Scottish Datazones are smaller than COAs and therefore problematic for rounding. In Scotland, LSOA data will continue to provide a basis for analysis.

7. Social Security and Child Support Appeals Tribunal (SSCSA)

The Independent Tribunal Service was introduced in 1984 to provide an independent appeals system. It was replaced by the Appeals Service (tAS) in April 2000. From 1st April 2006 the Appeals Service, was renamed as the Social Security and Child Support Appeals Tribunal (SSCSA) and became part of The Tribunals Service (a new Executive agency within the Department for Constitutional Affairs).

Responsibility for publishing statistics on the appeals now resides with SSCSA and they are currently working to publish statistical information via their website <http://www.tribunals.gov.uk/>, however in the interim the latest published figures are available here: <http://statistics.dwp.gov.uk/asd/qat.asp>. The contact for the SSCSA appeals data is: TSSTATS@tribunals.gsi.gov.uk.

8. Fraud and Error statistics

National Statistics are published presenting six-monthly estimates of fraud and error in claims for Income Support, Jobseeker's Allowance, Pension Credit and Housing Benefit, along with an annual estimate of the level of fraud and error in the benefit system as a whole. One-off benefit reviews have been carried out from time to time to estimate fraud and error in claims for other benefits. Reports can be found at http://research.dwp.gov.uk/asd/asd2/fraud_error.asp

9. Take-Up of Income-Related Benefits

Publications contain information on the take-up of the main income-related benefits in Great Britain: Income Support, Pension Credit, Housing Benefit, Council Tax Benefit and Jobseeker's Allowance (income based). Take-up is measured in two ways. Expenditure take-up compares the total amount of benefit received in the course of a year with the total amount that would have been received if everyone took up their entitlement for the full period of entitlement. Caseload take-up compares the number of benefit claimants – averaged over the year – with the number who would be receiving if everyone took up their entitlement for the full period of entitlement. Data is sourced from the Family Resources Survey and administrative benefit records. Latest published figures are available at <http://research.dwp.gov.uk/asd/irb.asp>

10. Other National Statistics issued by the Department for Work and Pensions

Abstract of Statistics for Benefits and Contributions and Indices of Prices and Earnings (annual) – *provides a reference source for those people interested in the main aspects of benefits, contributions and indices of prices and earnings. Latest published figures:* http://statistics.dwp.gov.uk/asd/other_stats.asp

Appeal Tribunal Statistics (quarterly) – *provides statistics on appeals and decisions. Latest published figures:* <http://statistics.dwp.gov.uk/asd/qat.asp>

Child Support Agency Quarterly Summary of Statistics – *provides statistics on the Child Support Agency. Latest published figures:* <http://www.childmaintenance.org/publications/statistics.html>

DWP Quarterly Statistical Summary – *provides summary of all DWP statistical outputs including latest quarterly benefit caseloads. Latest published figures:* http://statistics.dwp.gov.uk/asd/asd1/stats_summary/Stats_Summary_Nov2009.pdf

Family Resources Survey (annual) - *provides information on the incomes and circumstances of private households in the United Kingdom:* <http://statistics.dwp.gov.uk/asd/frs>

Households Below Average Income (annual) - *provides information on potential living standards as determined by disposable income, changes in income patterns over time and income mobility:* <http://statistics.dwp.gov.uk/asd/hbai.asp>

Housing Benefit and Council Tax Benefit Quarterly Performance Statistics – *provides high level statistics on Local Authority processing of Housing Benefit / Council Tax Benefit from quarterly administrative returns and also includes speed of processing new claims and charges of circumstances. Latest published figures:* http://statistics.dwp.gov.uk/asd/asd1/hb_ctb/performance/performance.asp

Housing Benefit Quarterly Fraud Performance Statistics – provides high level statistics on Local Authority fraud performance from quarterly administrative returns and also includes numbers of referrals, investigations actioned and sanctions administered. Latest published figures:
http://statistics.dwp.gov.uk/asd/asd1/hb_ctb/performance/performance.asp

Industrial Injuries Disablement Benefit and Reduced Earnings Allowance Statistics (annual) – provides statistics on current assessments and movements during statistical period. Latest published figures:
<http://statistics.dwp.gov.uk/asd/iidb.asp>

Industrial Injuries Disablement Benefit Quarterly Summary of Statistics – provides statistics on people in receipt of Industrial Injuries Disablement Benefit, new claims and newly diagnosed prescribed diseases. Latest published figures: <http://statistics.dwp.gov.uk/asd/iidb.asp>

National Insurance numbers allocated to overseas nationals (Previously migrant workers statistics – quarterly) provides statistics on migrant workers. Latest published figures:
http://statistics.dwp.gov.uk/asd/tabtool.asp#ni_alloc

Neighbourhood Statistics – Quarterly ward and Lower Super Outputs Area caseloads for Income Support, Jobseeker's Allowance, Incapacity Benefits, Disability Living Allowance, Attendance Allowance, Pension Credit and State Pension are available from: <http://83.244.183.180/NESS/page1.htm>

Pensioner Income Series (annual) - examines the levels, sources and distribution of pensioners' incomes and the position of pensioners within the population income distribution. Latest published figures:
http://statistics.dwp.gov.uk/asd/asd6/pensioners_income.asp

Second Tier Pension Provision (annual) – contains analysis of contracted out pension schemes. Latest published figures: http://statistics.dwp.gov.uk/asd/asd1/dsu/second_tier/second_tier.asp

Tax/Benefit Model Tables (annual) – designed to illustrate the weekly financial circumstances of a selection of hypothetical local authority and private tenants. Latest published figures:
<http://statistics.dwp.gov.uk/asd/tbmt.asp>

11. Other statistical outputs issued by the Department for Work and Pensions

Benefit Expenditure Tables - financial year historic information on benefit expenditure and caseloads, along with forecasts are available from <http://statistics.dwp.gov.uk/asd/asd4/expenditure.asp>

Six Month Offer Statistics - a support package offering up to 500,000 opportunities for Jobseeker's Allowance customers reaching six months unemployment. Latest published figures:
http://research.dwp.gov.uk/asd/6month_offer.asp

Employment and Support Allowance - work capability assessment statistics. Latest published figures:
http://research.dwp.gov.uk/asd/workingage/esa_wca/esa_wca_arc.asp

Pathways to Work Officials Statistics - Pathways to Work comprises a comprehensive range of support and provision designed to improve customers' prospects of returning to work. Latest published figures:
http://research.dwp.gov.uk/asd/workingage/ib_ref_p2w.asp