



# First Release

## DWP QUARTERLY STATISTICAL SUMMARY

*This Statistical Summary aims to give users a structured overview of the National Statistics published by the Department for Work and Pensions (DWP). Statistics are grouped by component area of DWP and, for each statistic; links are given for users to access more detailed information.*

*Key benefit statistics and employment programme statistics from 100% sources are available on an internet-based tabulation tool. A similar tabulation tool derived from 5% sample data is also available, however wherever possible 100% data should be used in preference to 5% estimates, as they are more accurate and form DWP's headline statistics. Statistics are also released via the NOMIS website and the Neighbourhood Statistics website.*

The latest National Statistics on benefit claimants, employment programmes, labour market decisions and vacancies produced by DWP were released on 11<sup>th</sup> August 2010 according to the arrangements approved by the UK Statistics Authority. Not all DWP National Statistics are covered by this release. Some statistics have their own first releases, but links to these are given throughout.

This summary also contains a new section. 'Focus on...' which examines the **Housing Benefit** caseload over the last year.

### Key Findings

- There were 5.9 million working age benefit claimants at February 2010. This is an increase of 115 thousand in the year to February 2010.
- Employment and Support Allowance (ESA) was introduced on 27<sup>th</sup> October 2008. There were around 479 thousand people claiming Employment and Support Allowance at the end of February 2010.
- The number of working age claimants of ESA and incapacity benefits totals 2.61 million in February 2010. This figure is 11 thousand higher than February 2009.
- The number of lone parents claiming Income Support (IS) decreased by 44 thousand to 692 thousand in the year to February 2010.
- At May 2010, the total number of people claiming Housing Benefit was 4.75 million, with 5.78 million claiming Council Tax Benefit.
- 3.68 million people had started on a New Deal programme up to May 2010. At November 2009, 2.29 million people have gained a job through the New Deal programme, with 118 thousand people gaining a job through Employment Zones up to January 2010.
- At February 2010, there were 12.7 million people of state pension age claiming a DWP benefit, an increase of 256 thousand since February 2009. Of these, 67% were claiming State Pension (SP) only.
- At February 2010, there were 12.5 million claimants of State Pension (SP), a rise of 261 thousand on a year earlier. Of these, 38% were male and 62% female.

11<sup>th</sup> August 2010  
IFD120510SSAUG10

Coverage: Great Britain (unless otherwise stated)

Theme: People and Places

**DWP** Department for Work and Pensions

**Issued by:**  
Information Directorate  
Department for Work and Pensions

Telephone:  
Press Office: 0203 267 5144

Website:  
[www.dwp.gov.uk](http://www.dwp.gov.uk)

### Statistician:

Stuart Grant  
Information Directorate  
Department for Work and Pensions  
Room BP5201  
Benton Park Road  
Longbenton  
Newcastle upon Tyne  
NE98 1YX

Telephone: 0191 216 6263  
Email:  
[stuart.grant@dwp.gsi.gov.uk](mailto:stuart.grant@dwp.gsi.gov.uk)

**Next publication:**  
15<sup>th</sup> September 2010  
(see Notes section)



- At February 2010, there were 2.74 million claimants of Pension Credit (3.35 million including partners), a fall of 5 thousand on the previous quarter. Of these, 955 thousand claimed Guarantee Credit only, 1.2 million claimed Guarantee and Savings Credit, and 575 thousand were claiming Savings Credit only.
- At the end of June 2010, the total Child Support Agency (CSA) live and assessed caseload stood at 1.15 million cases, of which 63% were current scheme cases.
- At February 2010, there were 3.14 million recipients of Disability Living Allowance (DLA), 531 thousand recipients of Carer's Allowance (CA), and 1.61 million recipients of Attendance Allowance (AA).

**Experimental statistics on benefit flows show:**

- There were 687 thousand new claims to Employment and Support Allowance and incapacity benefits, 26 thousand new claims to Bereavement Benefit/Widows Benefit (BB/WB), 358 thousand to Income Support (IS) and 696 thousand new claims to State Pension (SP) in the year to February 2010.
- There were 692 thousand benefit exits for Employment and Support Allowance and incapacity benefits, 40 thousand for Bereavement Benefit/Widows Benefit (BB/WB), 522 thousand for Income Support (IS) and 495 thousand benefit exits for State Pension (SP) in the year to February 2010.
- There were 263 thousand new claims to PC in the financial year 2008/2009.

**Experimental statistics on early estimates show:**

- At the end of June 2010, the working age Income Support lone parents (ISLP) early estimate was 675 thousand.
- At the end of June 2010, the Employment and Support Allowance and incapacity benefits (ESA/IB) early estimate was 2.615 million.



<b>Contents</b>	<i>Page</i>
<b>Focus on...</b>	
Housing Benefit	4
<b>1. Working Age</b>	
1.1 Working age Client Group	6
Individual Benefits	
1.2 Jobseeker's Allowance	9
1.3 Employment and Support Allowance and incapacity benefits	10
1.4 Income Support	12
1.5 Housing Benefit	13
1.6 Council Tax Benefit	13
1.7 Widow's Benefit & Bereavement Benefit	14
1.8 Jobseeker's Allowance sanctions and disallowances	15
1.9 New Deals & Employment Zones	16
1.10 Vacancies handled by Jobcentre Plus	17
<b>2. Early Estimates for Working Age Inactive Benefit Client Group</b>	
2.1 Employment and Support Allowance / incapacity benefits (ESA/IB) client group	18
2.2 Income Support Lone Parent (ISLP) client group	19
<b>3. Pensioners</b>	
3.1 Pensioner Client Group	20
Individual Benefits	
3.2 State Pension	21
3.3 Pension Credit	22
<b>4. Disabled and Carers</b>	
4.1 Disability Living Allowance	23
4.2 Attendance Allowance	23
4.3 Carer's Allowance	24
4.4 Industrial Injuries Disablement Benefit	25
<b>5. Families &amp; Children</b>	
5.1 Child Support Agency cases	26
Notes	28

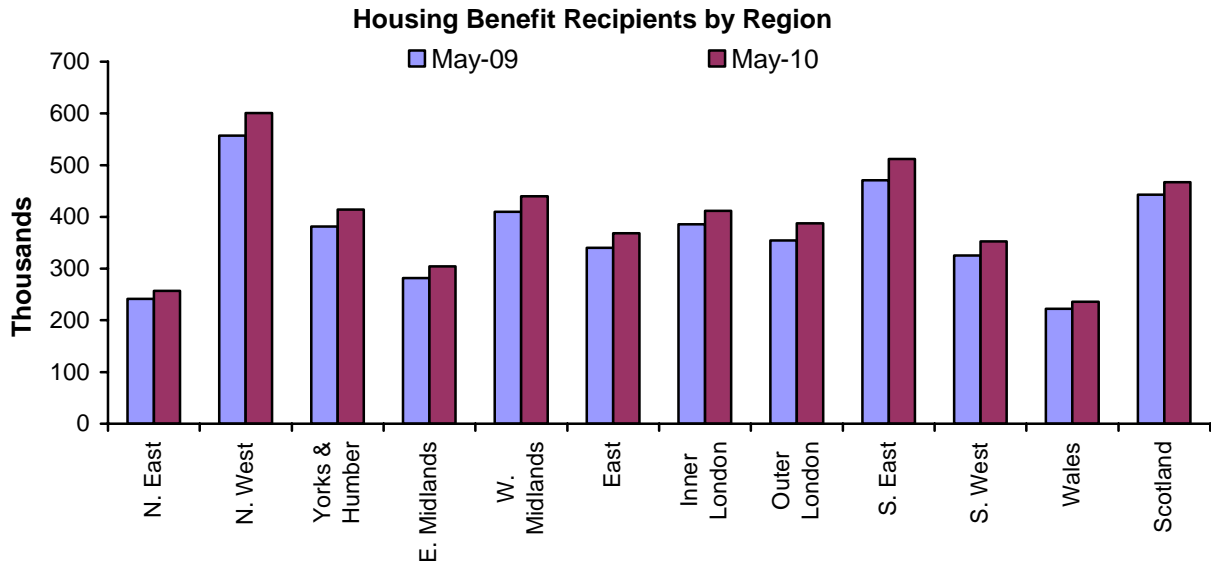
## Focus on...Housing Benefit

This statistical commentary looks at the Housing Benefit caseload over the past year.

### Overall...

...the number of people in receipt of Housing Benefit (HB) was 4.75 million at May 2010, an increase of 0.34 million (or 7.7%) over the year.

The average HB weekly award was £84.20, a rise of £3.20 from May 2009.



### Across the country...

...all regions saw an increase in the number of people in receipt of HB in the year to May 2010, with the largest proportional increase in Outer London (9.5%) and the smallest in Scotland (5.5%).

### For tenancy type...

...the increase in the HB caseload over the year to May 2010 was largely within the private rented sector (up 19.1%), although the social rented sector still accounts for over two-thirds of HB recipients.

The average HB award in the private rented sector is £36.91 higher than in the social rented sector (£109.79 versus £72.88). Over one million HB recipients are within the Local Housing Allowance scheme.

### Most HB recipients also receive other benefits...

...with almost seven in ten also in receipt of a passported benefit<sup>1</sup>. The number of HB recipients on a passported benefit has increased by 6.8% over the last year, driven by increases of recipients on income based Jobseekers Allowance and Employment and Support Allowance.

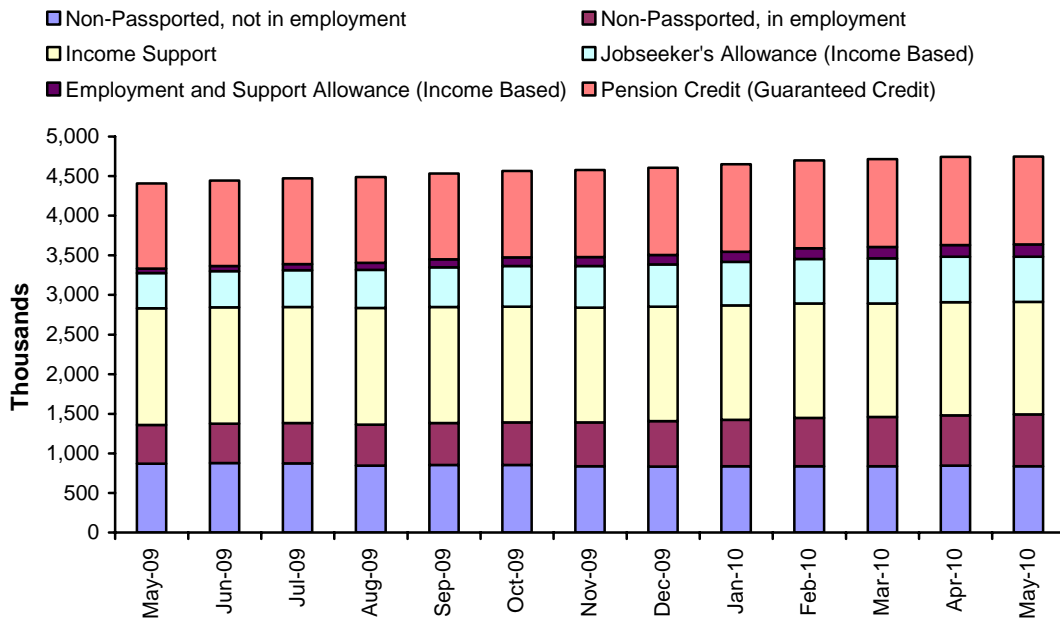
### ...although a significant number are in work...

...with 13.7% (0.65 million) of non-passported HB recipients in employment<sup>2</sup>. The number of HB recipients in employment is 34% higher than one year ago, compared to a 28.7% increase in HB recipients claiming income based Jobseekers Allowance over the same period.

<sup>1</sup> Consists of Income Support, income based Jobseekers Allowance, income based Employment and Support Allowance and Pension Credit (Guaranteed Credit)

<sup>2</sup> HB claim where no passporting benefit is in payment and claimant or partner is in work

### Housing Benefit Recipients by Passported Status



**Most HB recipients are aged under 65...**

...with just over one quarter aged 65 or over, receiving an average HB award of £69.92. The average HB award for people aged under 65 was £89.49.

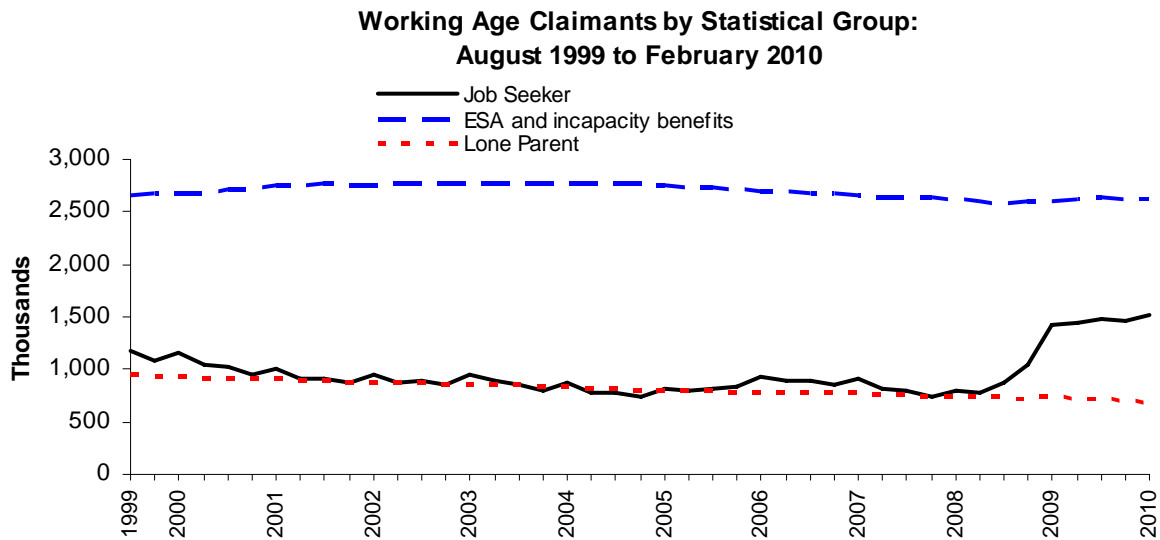
**...and most do not have dependent children...**

...with one third of HB recipients having dependent children, over two-thirds of whom do not have a partner. Single recipients with dependent children receive an average weekly award of £100.95.

## 1. Working Age

### 1.1 Working Age client group

Combines data collected for Jobseeker's Allowance, Incapacity Benefit, Employment and Support Allowance, Severe Disablement Allowance, Disability Living Allowance, Carer's Allowance, Widow's Benefit, Bereavement Benefit and Income Support for working age claimants (including Pension Credit for males aged 60 to 64).



Between August 1999 and February 2008, the number of jobseekers in GB fell from 1.18 million to 807 thousand. However, it has risen to almost 1.53 million at February 2010. The preferred source of JSA figures is the ONS claimant count measure (which is seasonally adjusted).

The lone parent caseload fell from 945 thousand to 692 thousand between August 1999 and February 2010.

The number of working age claimants of Employment and Support Allowance (ESA) and incapacity benefits totals 2.61 million in February 2010. This shows a year-on-year increase of 11 thousand.



**Table 1.1 Working Age claimants by Statistical Group: August 1999 – February 2010**

	Total	Job Seeker <sup>2</sup>	Employment and Support Allowance and incapacity benefits <sup>3</sup>	Lone Parent <sup>4</sup>	Carer <sup>5</sup>	Other Income Related <sup>6</sup>	Disabled <sup>7</sup>	Thousands Bereaved <sup>8</sup>
Aug -99	..	1,181.86	2,655.38	945.06	316.13	221.31	..	..
Nov -99	..	1,083.03	2,674.71	930.24	316.50	218.37	..	..
Feb -00	..	1,154.97	2,676.39	923.47	313.58	216.97	..	..
May -00	..	1,037.01	2,686.30	919.43	310.88	210.80	..	..
Aug -00	..	1,015.83	2,714.85	920.10	309.67	197.95	..	..
Nov -00	..	948.66	2,722.57	905.76	311.56	196.69	..	..
Feb -01	..	1,001.08	2,750.45	908.21	313.96	182.81	..	..
May -01	..	909.15	2,753.66	900.43	319.59	180.15	..	..
Aug -01	..	907.68	2,763.62	900.22	323.83	175.41	..	..
Nov -01	..	880.36	2,746.02	878.59	328.62	179.08	..	..
Feb -02	..	955.45	2,745.58	877.11	332.02	176.62	..	..
May -02	<b>5,455.75</b>	877.38	2,765.73	870.95	335.79	165.60	245.27	195.02
Aug -02	<b>5,481.48</b>	890.54	2,769.36	875.04	339.91	167.19	249.72	189.71
Nov -02	<b>5,428.63</b>	850.05	2,776.56	856.23	343.72	161.36	256.58	184.13
Feb -03	<b>5,514.28</b>	946.16	2,776.54	848.85	346.17	156.33	260.92	179.32
May -03	<b>5,459.68</b>	885.78	2,773.61	855.81	347.94	155.96	266.25	174.33
Aug -03	<b>5,425.85</b>	851.37	2,777.06	851.73	350.41	155.26	270.15	169.88
Nov -03	<b>5,363.74</b>	803.88	2,780.49	831.75	353.25	154.20	275.51	164.67
Feb -04	<b>5,426.42</b>	867.42	2,777.53	830.25	355.81	155.20	280.13	160.09
May -04	<b>5,327.35</b>	777.40	2,772.85	823.27	359.25	155.42	283.33	155.83
Aug -04	<b>5,321.26</b>	769.25	2,774.93	818.10	360.08	158.20	289.12	151.59
Nov -04	<b>5,270.77</b>	741.06	2,772.18	796.53	361.42	157.94	294.15	147.49
Feb -05	<b>5,327.77</b>	819.68	2,757.65	793.13	362.04	153.93	297.23	144.11
May -05	<b>5,289.13</b>	800.66	2,741.62	789.32	363.76	151.09	300.96	141.73
Aug -05	<b>5,302.72</b>	825.11	2,725.47	789.35	365.08	153.71	305.84	138.17
Nov -05	<b>5,287.66</b>	836.71	2,710.50	778.56	363.34	155.74	309.31	133.51
Feb -06	<b>5,384.74</b>	935.20	2,705.47	777.10	368.66	153.06	313.85	131.40
May -06	<b>5,325.77</b>	895.88	2,688.02	774.86	368.50	152.70	317.04	128.78
Aug -06	<b>5,335.22</b>	900.92	2,683.00	783.19	369.81	153.12	319.13	126.06
Nov -06	<b>5,288.35</b>	860.22	2,672.97	775.62	371.71	161.10	326.64	120.09
Feb -07	<b>5,321.68</b>	904.04	2,662.13	771.35	373.83	163.32	329.75	117.26
May -07	<b>5,207.27</b>	807.27	2,643.21	765.62	374.84	167.05	335.14	114.15
Aug -07	<b>5,187.14</b>	788.45	2,641.11	763.55	376.03	167.84	340.61	109.55
Nov -07	<b>5,124.68</b>	741.10	2,641.70	741.83	379.35	167.29	346.16	107.25
Feb -08	<b>5,174.88</b>	806.70	2,617.88	741.71	384.49	169.95	349.38	104.78
May -08	<b>5,142.63</b>	787.87	2,595.83	738.64	387.56	173.33	356.50	102.90
Aug -08	<b>5,232.88</b>	868.73	2,590.61	744.68	392.73	176.23	360.08	99.81
Nov -08	<b>5,404.12</b>	1,036.48	2,605.51	728.98	396.80	178.84	360.47	97.04
Feb -09	<b>5,802.48</b>	1,421.60	2,603.54	736.04	400.12	181.88	363.82	95.49
May -09	<b>5,836.50</b>	1,443.00	2,621.43	720.48	405.56	183.22	368.94	93.87
Aug -09	<b>5,895.65</b>	1,485.32	2,632.74	715.73	412.97	184.46	373.10	91.33
Nov -09	<b>5,857.13</b>	1,469.92	2,618.38	695.72	418.53	188.23	377.95	88.40
Feb -10	<b>5,917.56</b>	1,526.01	2,614.76	692.02	422.08	191.35	383.28	88.06

**Notes:**

See page 6 for notes on Table 1.1



### **Notes relating to Table 1.1**

1. Claimants have been assigned to a statistical group according to a hierarchy. The order is shown in the table, i.e. 'Job Seekers' followed by 'Employment and Support Allowance and incapacity benefits'.
2. 'Job Seekers' are recipients of Jobseeker's Allowance.
3. 'From November 2008 the "incapacity benefits group" includes Employment and Support Allowance (ESA). ESA replaced Incapacity Benefit and Income Support paid on the grounds of incapacity for new claims from 27th October 2008. Prior to this the "incapacity benefits group" referred to claimants of Incapacity Benefit (including credits only) or Severe Disablement Allowance including people claiming IS on the grounds of Incapacity.
4. 'Lone Parents' are single recipients of Income Support with a child under 16.
5. 'Carers' are recipients of Carers Allowance.
6. 'Others on Income Related Benefit' are other recipients of Income Support (including Income Support Disability Premium) or Pension Credit.
7. 'Disabled' are recipients of Disability Living Allowance. Industrial Injuries benefits data is not available.
8. 'Bereaved' are recipients of Widow's Benefit or Bereavement Benefit.
9. Totals are not shown prior to May 2002 as complete data is not available for 'Disabled' and 'Bereaved' statistical groups.
10. HB/CTB data are not included in the client group hierarchy but are published separately (see page 11).

Latest statistical data available from: <http://83.244.183.180/100pc/tabtool.html>

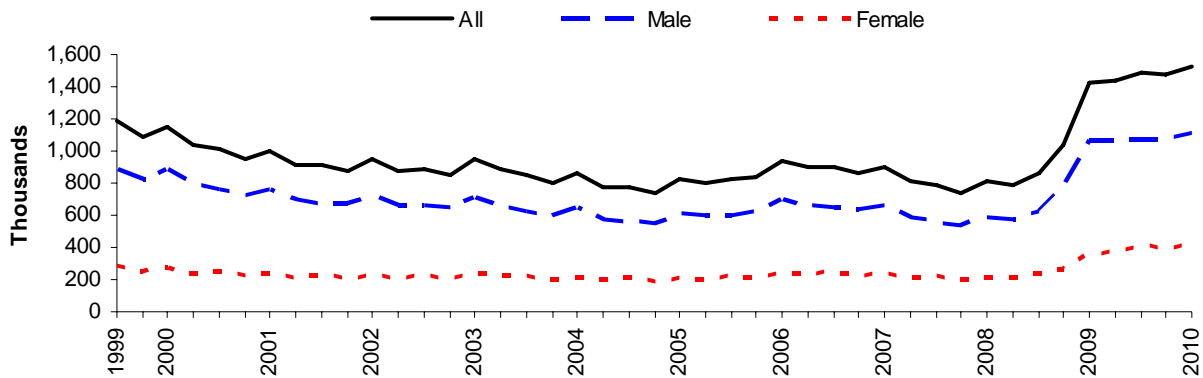




## 1.2 Jobseeker's Allowance

Jobseeker's Allowance (JSA) was introduced on 7th October 1996 and has both contributory and income-related elements. It is paid to people under state pension age who are available for and actively seeking work of at least forty hours per week.

Jobseekers Allowance by Gender: August 1999 to February 2010



The preferred source of JSA figures is the ONS claimant count measure (which is seasonally adjusted).

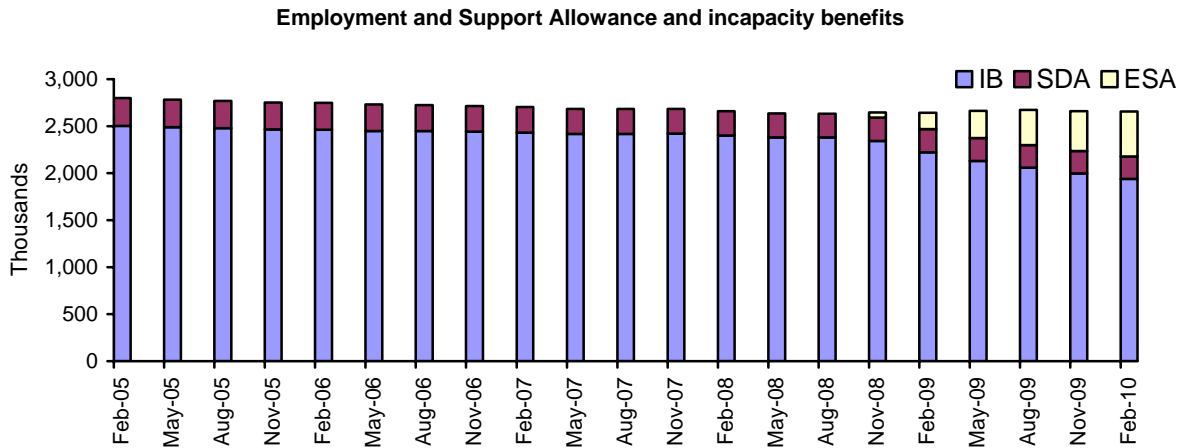
DWP produce a separate set of Jobseeker's Allowance figures to enable cross-benefit analysis and supply a wider range of breakdowns, and these are provided in this release.

The DWP figures at February 2010 show the total number of Jobseeker's Allowance claimants was almost 1.53 million. Female claimants represented 27% of the JSA caseload (416 thousand), while males represented 73% (1,110 thousand). The total caseload has risen by 104 thousand since February 2009.

Latest statistical data available from: <http://83.244.183.180/100pc/tabtool.html>

### 1.3 Employment and Support Allowance and incapacity benefits

From 27th October 2008, Employment & Support Allowance (ESA) replaced Incapacity Benefit and Income Support paid on the grounds of incapacity for new claims. Incapacity benefits consist of Incapacity Benefit (introduced on 13th April 1995 and paid to people who are incapable of work and who have paid sufficient contributions throughout their working life) and Severe Disablement Allowance (SDA). This section includes a small number of claimants of State Pension age, therefore figures may differ to those in Table 1.1 which refers to working age claimants only.



At February 2010, there were 2.66 million claimants of Employment and Support Allowance and incapacity benefits (Incapacity Benefit or Severe Disablement Allowance), an increase of 12 thousand on a year earlier. 57% of claimants were men and 43% women. Both the male and female caseloads have increased: the males by 2 thousand and the females by 10 thousand in the year to February 2010.

There were 164 thousand new Employment and Support Allowance and incapacity benefits claimants in the February 2010 quarter, which represents 6% of the February caseload. Over the same period, 171 thousand claimants left the benefits, 6% of the caseload at February 2010.

In the year to February 2010, there were a total of 687 thousand new claims for Employment and Support Allowance and incapacity benefits and 692 thousand claims were closed.



**Table 1.2 Employment and Support Allowance and incapacity benefits claimants & beneficiaries: August 1999 – February 2010**

Thousands

	All ESA and incapacity benefits claimants <sup>1,2</sup>				All ESA and incapacity benefits beneficiaries <sup>1,2</sup>			
	Total	ESA	IB	SDA	Total	ESA	IB	SDA
Aug -99	<b>2,732.50</b>	.	2,355.24	377.26	<b>1,978.56</b>	.	1,601.30	377.26
Nov -99	<b>2,738.13</b>	.	2,361.30	376.83	<b>1,967.96</b>	.	1,591.13	376.83
Feb -00	<b>2,724.03</b>	.	2,348.39	375.64	<b>1,949.96</b>	.	1,574.32	375.64
May -00	<b>2,728.09</b>	.	2,352.52	375.56	<b>1,941.20</b>	.	1,565.63	375.56
Aug -00	<b>2,756.51</b>	.	2,380.31	376.20	<b>1,949.08</b>	.	1,572.89	376.20
Nov -00	<b>2,764.14</b>	.	2,387.86	376.28	<b>1,945.44</b>	.	1,569.16	376.28
Feb -01	<b>2,792.03</b>	.	2,415.02	377.00	<b>1,961.19</b>	.	1,584.18	377.00
May -01	<b>2,795.34</b>	.	2,420.88	374.45	<b>1,955.00</b>	.	1,580.55	374.45
Aug -01	<b>2,805.45</b>	.	2,435.42	370.03	<b>1,947.63</b>	.	1,577.60	370.03
Nov -01	<b>2,787.71</b>	.	2,425.57	362.14	<b>1,926.79</b>	.	1,564.64	362.14
Feb -02	<b>2,787.22</b>	.	2,427.22	360.00	<b>1,923.90</b>	.	1,563.90	360.00
May -02	<b>2,807.63</b>	.	2,471.14	336.48	<b>1,925.86</b>	.	1,589.38	336.48
Aug -02	<b>2,811.43</b>	.	2,478.84	332.58	<b>1,918.07</b>	.	1,585.48	332.58
Nov -02	<b>2,818.48</b>	.	2,489.91	328.56	<b>1,912.53</b>	.	1,583.97	328.56
Feb -03	<b>2,818.57</b>	.	2,493.87	324.70	<b>1,908.90</b>	.	1,584.20	324.70
May -03	<b>2,815.66</b>	.	2,494.89	320.76	<b>1,897.03</b>	.	1,576.26	320.76
Aug -03	<b>2,819.05</b>	.	2,502.06	316.99	<b>1,888.80</b>	.	1,571.81	316.99
Nov -03	<b>2,822.27</b>	.	2,509.01	313.26	<b>1,881.88</b>	.	1,568.62	313.26
Feb -04	<b>2,819.16</b>	.	2,509.67	309.49	<b>1,873.81</b>	.	1,564.32	309.49
May -04	<b>2,814.71</b>	.	2,508.77	305.94	<b>1,859.96</b>	.	1,554.01	305.94
Aug -04	<b>2,817.01</b>	.	2,514.27	302.73	<b>1,849.78</b>	.	1,547.05	302.73
Nov -04	<b>2,814.41</b>	.	2,514.73	299.67	<b>1,840.28</b>	.	1,540.60	299.67
Feb -05	<b>2,799.87</b>	.	2,503.53	296.34	<b>1,827.15</b>	.	1,530.81	296.34
May -05	<b>2,783.72</b>	.	2,490.85	292.87	<b>1,809.98</b>	.	1,517.11	292.87
Aug -05	<b>2,767.74</b>	.	2,478.16	289.59	<b>1,793.00</b>	.	1,503.41	289.59
Nov -05	<b>2,752.90</b>	.	2,466.20	286.70	<b>1,780.31</b>	.	1,493.61	286.70
Feb -06	<b>2,747.49</b>	.	2,464.24	283.25	<b>1,768.66</b>	.	1,485.41	283.25
May -06	<b>2,730.00</b>	.	2,449.99	280.01	<b>1,750.91</b>	.	1,470.90	280.01
Aug -06	<b>2,724.98</b>	.	2,447.96	277.02	<b>1,738.64</b>	.	1,461.62	277.02
Nov -06	<b>2,714.95</b>	.	2,441.03	273.91	<b>1,724.35</b>	.	1,450.44	273.91
Feb -07	<b>2,704.10</b>	.	2,433.40	270.70	<b>1,711.63</b>	.	1,440.93	270.70
May -07	<b>2,685.32</b>	.	2,417.71	267.61	<b>1,692.66</b>	.	1,425.05	267.61
Aug -07	<b>2,683.16</b>	.	2,418.65	264.51	<b>1,681.86</b>	.	1,417.35	264.51
Nov -07	<b>2,683.75</b>	.	2,422.01	261.74	<b>1,673.10</b>	.	1,411.36	261.74
Feb -08	<b>2,659.65</b>	.	2,401.06	258.59	<b>1,655.01</b>	.	1,396.43	258.59
May -08	<b>2,637.56</b>	.	2,382.00	255.56	<b>1,634.92</b>	.	1,379.36	255.56
Aug -08	<b>2,632.00</b>	.	2,379.46	252.53	<b>1,624.20</b>	.	1,371.67	252.53
Nov-08 <sup>4</sup>	<b>2,646.78</b>	53.77	2,343.25	249.76	<b>1,644.93</b>	47.90	1,347.27	249.76
Feb-09	<b>2,644.43</b>	175.81	2,221.89	246.73	<b>1,689.36</b>	156.35	1,286.28	246.73
May-09	<b>2,662.49</b>	288.27	2,130.13	244.09	<b>1,730.72</b>	250.86	1,235.77	244.09
Aug-09	<b>2,674.02</b>	374.44	2,058.02	241.56	<b>1,755.35</b>	320.15	1,193.64	241.56
Nov-09	<b>2,659.65</b>	425.77	1,994.95	238.93	<b>1,762.02</b>	367.62	1,155.47	238.93
Feb-10	<b>2,655.96</b>	479.43	1,940.30	236.23	<b>1,775.44</b>	416.36	1,122.85	236.23

**Notes:**

1. 'ESA' – Employment and Support Allowance, 'IB' – Incapacity Benefit and 'SDA' – Severe Disablement Allowance.
2. Figures on the beneficiaries show those claimants who are receiving money. Claimants include those beneficiaries plus, those receiving National Insurance Credits and no monetary payment (many of whom will also receive Income Support).
3. This table replaces table 1.2 in the February 2010 Statistical Summary. This table includes all claimants of Incapacity Benefit, Severe Disablement Allowance or Employment and Support Allowance. This provides a consistent time series. Numbers of Working Age claimants of 'ESA and incapacity benefits' are shown in the Working Age Client Group section of this release. Those figures differ from this table due to the inclusion of a small number of claimants over state pension age in table 1.2 and minor methodological differences.

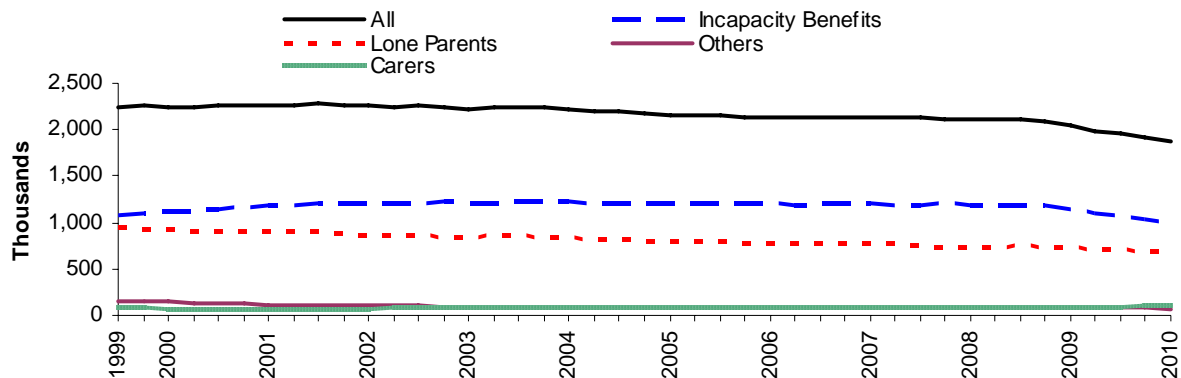
Latest statistical data available from: <http://83.244.183.180/100pc/tabtool.html>



## 1.4 Income Support

Income Support (IS) was introduced on 11th April 1988 and is an income-related benefit that can be claimed by people aged 16-59 that work fewer than 16 hours a week and have insufficient income to meet their needs. Prior to the introduction of Pension Credit in October 2003, IS was available to people aged 60 and over. From 27th October 2008, Employment & Support Allowance (ESA) replaced Incapacity Benefit and Income Support paid on the grounds of incapacity for new claims.

**Income Support by Statistical Group:  
August 1999 to February 2010**



Pension Credit (PC) replaced Minimum Income Guarantee (MIG) in Income Support on 6 October 2003. **MIG claimants have been excluded from this data prior to November 2003.**

At February 2010, the total number of Income Support (IS) claimants was 1.88 million. Claimants of incapacity benefits represented 54% of the IS caseload (1.02 million). Lone Parents (all single claimants with dependants under 16, excluding claimants of incapacity benefits) represented 37% of the IS caseload (692 thousand), while Carers and Others represented 9% of the caseload (176 thousand).

There were 79 thousand new claimants of Income Support in the February 2010 quarter, which represents 4% of the February caseload. Over the same period, 105 thousand claimants left the benefit, 6% of the caseload at end of February 2010.

In the year to February 2010, there were a total of 358 thousand new claims for Income Support and 522 thousand claims were closed.

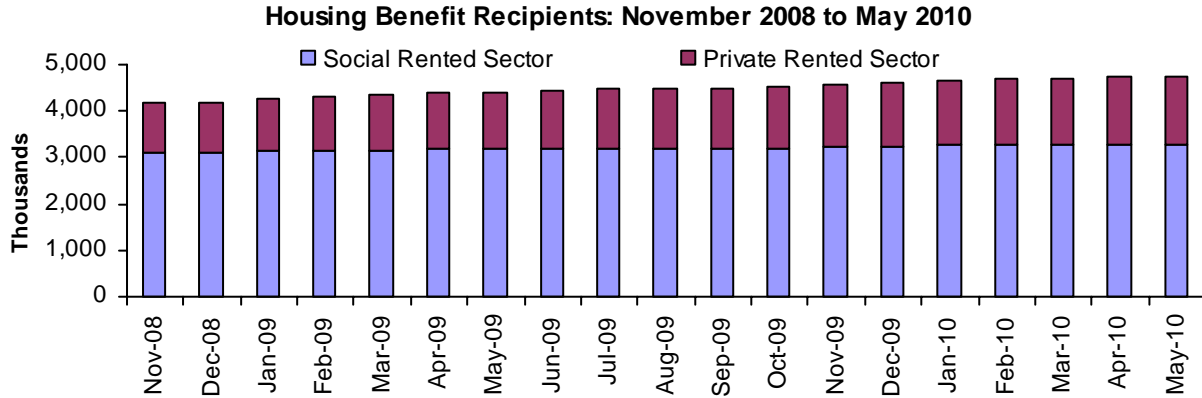
**Table 1.3 Income Support Lone Parents claimants: February 2010**

	Total	Thousands	
		Female	Male
<b>All Ages</b>	<b>692.02</b>	667.16	24.86
Unknown Age	0.01	0.01	-
Under 18	5.36	5.35	0.01
18-24	171.56	170.00	1.56
25-34	281.81	273.96	7.85
35-44	186.04	175.95	10.09
45-54	44.62	39.88	4.72
55-59	2.62	2.00	0.62

1. Lone Parents are all single claimants with dependants aged under 16, but excluding claimants of incapacity benefits.

## 1.5 Housing Benefit

Housing Benefit (HB) was introduced on 1st April 1983 and is an income-related benefit designed to help people on low incomes pay for rented accommodation whether in or out of work.



At May 2010 there were 4.75 million recipients of Housing Benefit, of whom almost three-quarters were aged under 65. The average weekly amount of Housing Benefit was £84.20.

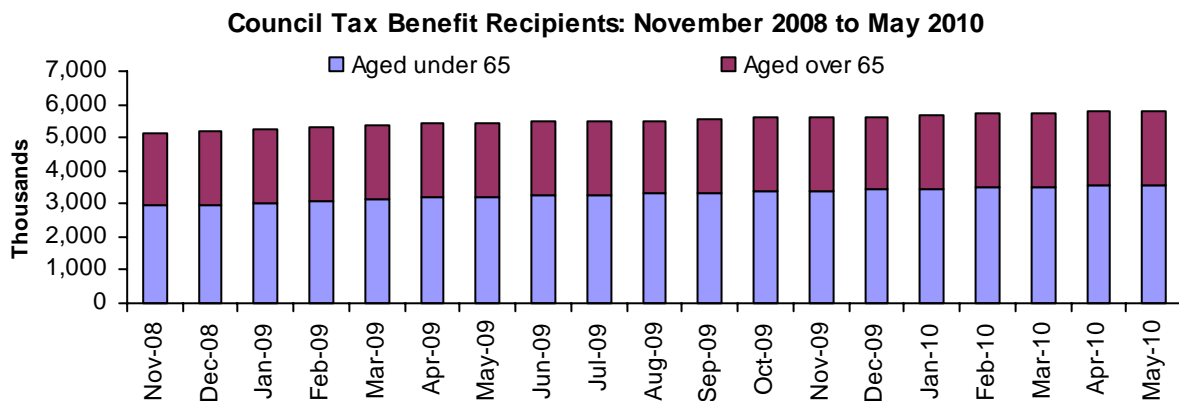
69% of Housing Benefit recipients were tenants of Social Sector landlords and 31% were tenants of Private Sector landlords. 73% of Private Sector tenants were receiving the Local Housing Allowance.

69% were also in receipt of Income Support, income-based Jobseeker's Allowance, income-based Employment and Support Allowance or Pension Credit (Guarantee Credit).

Latest statistical data available from: <http://research.dwp.gov.uk/asd/index.php?page=hbctb>

## 1.6 Council Tax Benefit

Council Tax Benefit (CTB) was introduced on 1st April 1993 and is an income-related benefit, calculated in a similar way to Housing Benefit, which has been designed to help people on low incomes pay their Council Tax.



At May 2010 there were 5.78 million recipients of Council Tax Benefit (figure excludes second adult rebates), of whom 3.6 million were aged under 65.

The average weekly amount of Council Tax Benefit was £16.00.

69% of Council Tax Benefit recipients were also in receipt of Income Support, income-based Jobseeker's Allowance, income-based Employment and Support Allowance or Pension Credit (Guarantee Credit).

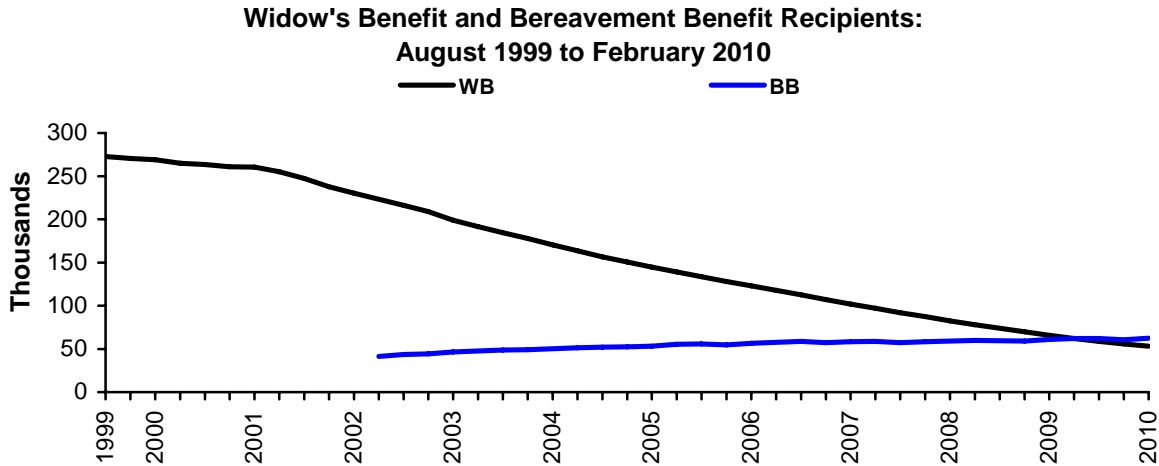
Latest statistical data available from: <http://research.dwp.gov.uk/asd/index.php?page=hbctb>



### 1.7 Widow's Benefit & Bereavement Benefit

Widow's Benefit (WB) was introduced on 6th July 1948 and is payable to women widowed between 11th April 1988 and 8th April 2001 inclusive. There are three types of WB: Widow's Payment, Widowed Mother's Allowance and Widow's Pension. Women widowed before 11th April 1988 continue to receive Widow's Benefit based on the rules that existed before that date.

Bereavement Benefit (BB) was introduced on 9th April 2001 as a replacement for Widow's Benefit. It is payable to both men and women widowed on or after 9th April 2001. There are three types of BB: Bereavement Payment, Widowed Parent's Allowance and Bereavement Allowance.



At February 2010, there were 53 thousand claimants of Widow's Benefit, a fall of 13 thousand on a year earlier. Of these, 45 thousand were in receipt of Widow's Pension and 8 thousand Widowed Mother's Allowance.

At February 2010, there were 62 thousand claimants of Bereavement Benefit, an increase of 2 thousand on a year earlier. Of these, 19 thousand were in receipt of Bereavement Allowance and 44 thousand in receipt of Widowed Parent's Allowance.

There were 7 thousand new claimants of Bereavement Benefit/Widows Benefit in the February 2010 quarter, which represents 6% of the February caseload.

Over the same period, 9 thousand claimants left the benefits, 8% of the caseload at February 2010.

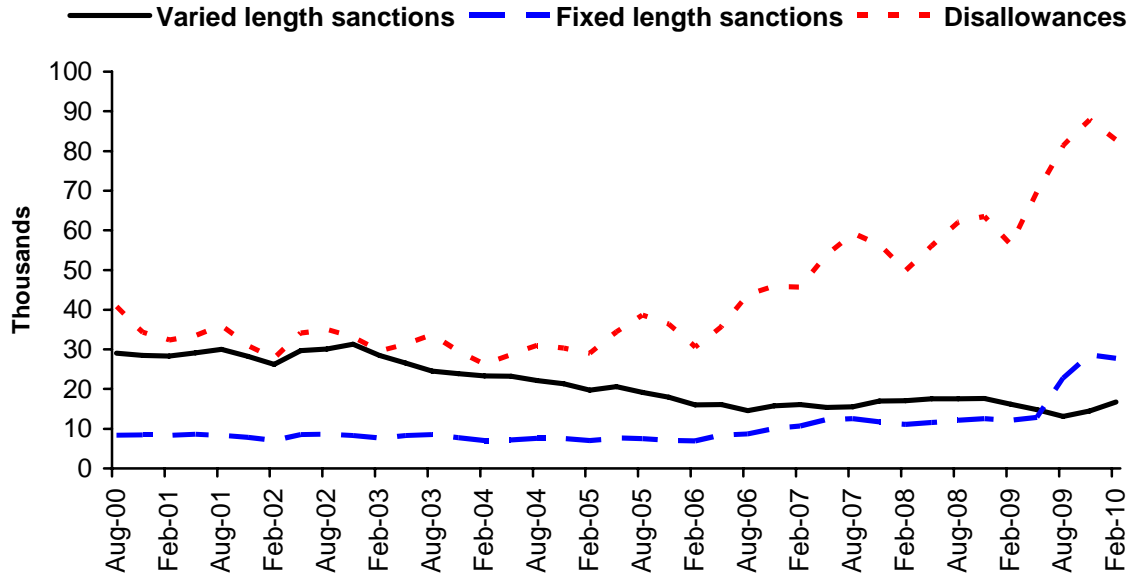
In the year to February 2010, there were a total of 26 thousand new claims for Bereavement Benefit/Widows Benefit and 40 thousand claims were closed.

Latest statistical data available from: <http://83.244.183.180/100pc/tabtool.html>

### 1.8 Jobseeker's Allowance sanction and disallowance decisions

A JSA claimant can have their claim sanctioned (payment is temporarily suspended) or disallowed (entitlement ends) if they are deemed not to have just cause for failing to fulfil the conditions of their claim. Sanctions can be 'Varied length' or 'Fixed length' and last between 1 and 26 weeks in duration. Disallowances result in the claim ending.

**Adverse decisions for JSA Labour Market questions for Sanctions and Disallowances per quarter: August 2000 to February 2010**



In the quarter ending February 2010 there were 256 thousand referrals for JSA sanctions and disallowance decisions. There were 219 thousand decisions were made; of which 127 thousand were adverse (i.e. a sanction or disallowance was applied).

Monthly data are available up to April 2010 that show a marked increase in the number of fixed length sanction referrals and a steep decline in the number of disallowance referrals. These changes are mainly due to the reclassification of 'Failure to Attend Advisory Interviews' decisions from disallowance to fixed length. In addition, new categories of fixed length decisions were introduced from October 2009 to support Flexible New Deal.

*Please Note: This summary includes data on decisions made for sanction referrals only, not opinions.*

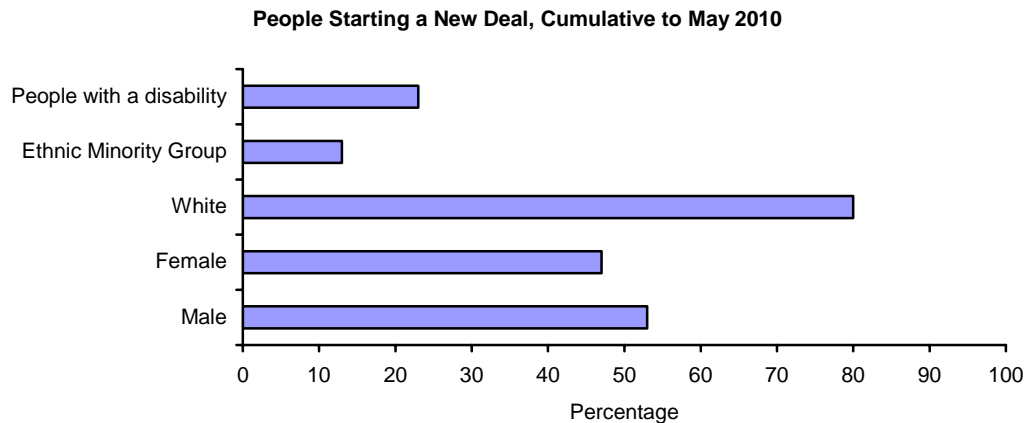
Latest statistical data available from: <http://83.244.183.180/sanction/sanction/LIVE/tabtool.html>



## 1.9 New Deals & Employment Zones

New Deal for Young People was established in 1998 aimed at people aged 18 to 24 unemployed for at least 6 months. Since then a range of other mandatory and voluntary New Deal programmes have been established aimed at specific client groups.

**Since Flexible New Deal (FND) was introduced in October 2009 there have been no new starts on existing JSA employment programmes in FND areas. Employment programme policy is changing with the intention to move to a new Work Programme. More information on the policy changes and any resulting impact on statistical publications will be made available as soon as plans are finalised.**



3.68 million individuals have started on a New Deal programme up to May 2010.

Up to November 2009, some 2.29 million people have gained a job through the New Deal programme, with an additional 118 thousand people gaining a job through Employment Zones up to January 2010.

New Deal for Disabled People (NDDP) participants and leavers series are withdrawn due to data quality issues .The jobs series has also not been updated due to data quality issues.

**Table 1.4 Summary of New Deal and Employment Zones**

*Thousands*

	New Deal for:						Employment Zones
	Young People	25+	Lone Parents	Disabled People <sup>3</sup>	50+ <sup>4</sup>	Partners <sup>5</sup>	
<i>latest data</i> <sup>1</sup>							
People Starting <sup>2</sup>	1,564.48	878.67	1,042.08	355.32	112.03	21.91	242.25
Currently Participating	76.97	43.65	99.17	-	14.38	5.33	14.74
People gaining a Job	953.63	378.31	662.80	215.80	197.62	8.55	117.84

1. Latest data relates to end of May 2010 for people starting NDYP, ND25+, NDLP, NDDP, ND50+ and NDP. For current participants of NDYP, ND25+, NDLP, NDDP, ND50+ and NDP, latest data relates to the end of February 2010. For those people gaining a job through NDYP, ND25+, NDLP, NDDP, ND50+ and NDP, latest data relates to end of November 2009. Latest Employment Zone data for people starting and currently participating is from April 2010, however for those gaining a job, latest data relates to January 2010.

2. The sum of people starting and gaining a job for each separate New Deal will not equal the number of people starting and gaining a job through the New Deal as a whole (as indicated above) because some people will start and gain a job through more than one New Deal programme.

3. Statistics relating to current participants and leavers from NDDP have been withdrawn for quality reasons.

4. Starts for ND50+ are from January 2004 onwards. The jobs figures for ND50+ also include 98,040 individuals who had received Employment Credit up to March 2003.

5. Starts for NDP also include 7,820 individuals from starts up to March 2004 and jobs for NDP also include a further 1,860 jobs from up to March 2004.

6. For reporting purposes we are still counting starts to the in-work training grant as an ND50plus start in FND phase one areas for the period from April 2009, although the ND50plus programme has officially ended in these areas. We estimate there are 2,400 such starts up to the end of December 2010.

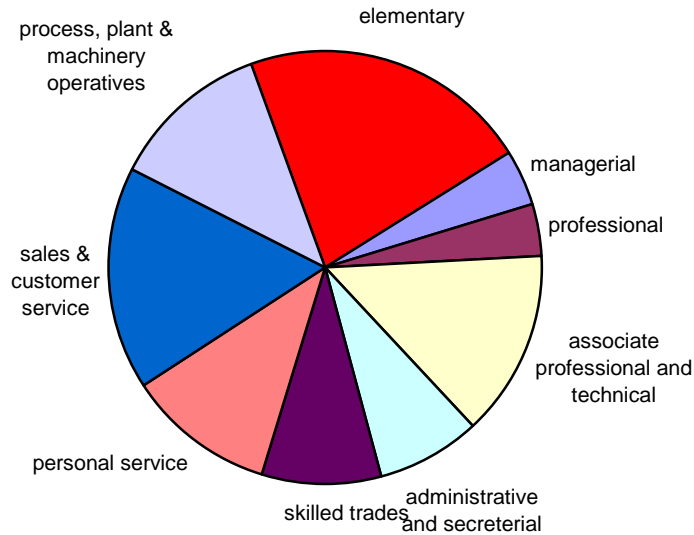




### 1.10 Vacancies handled by Jobcentre Plus

As the public employment service for Great Britain, Jobcentre Plus handle a significant share of all vacancies advertised by employers, albeit that vacancies notified to Jobcentre Plus do not represent the total number of vacancies in the whole economy.

Vacancies notified by occupation: January to June 2010



On average, 297 thousand vacancies a month were notified to Jobcentre Plus between January and June 2010. Most commonly these are for elementary occupations (22%) and sales/customer services (17%). 15% of notified vacancies are in the North West region compared to 10% in London, 5% Wales and 7% Scotland.

As at June 2010, the number of unfilled vacancies available to jobseekers was 297 thousand.

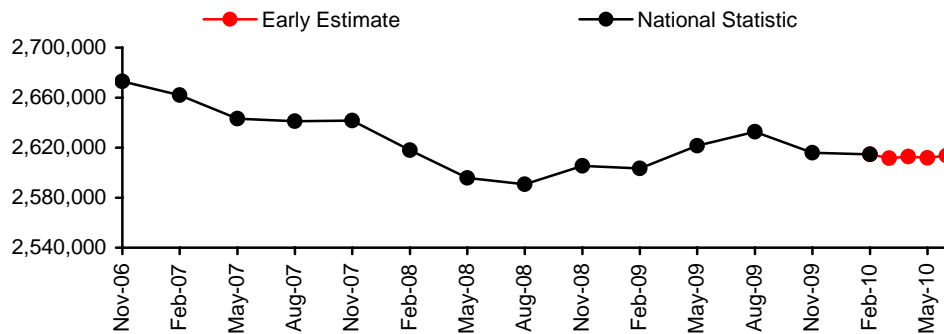
Latest statistical data available from: <http://www.nomisweb.co.uk>

## 2. Early Estimates for Working Age Inactive Benefit Client Group

### 2.1 Employment and Support Allowance / incapacity benefits (ESA/IB) client group

The early estimates for working age inactive benefit client groups are released monthly and are designed to give indicative, timely information ahead of the publication of full National Statistics. They are not a substitute for the National Statistics and will be replaced when the final quarterly National Statistics covering the same period are published.

National Statistics to February 2010 and Early Estimates of working age Employment and Support Allowance/ incapacity benefits (ESA/IB) client group: March 2010 to June 2010.



The working-age Employment and Support Allowance and incapacity benefits (ESA/IB) early estimate for June 2010 is 2.615 million to the nearest 5,000. This indicates no change since February 2010 (the latest National Statistic).

National Statistics are available for quarters up to the end of February 2010. Final figures for the quarter ending May 2010 will be released on 17<sup>th</sup> November 2010. The most recent National Statistics show 2.61 million individuals were in the ESA/IB client group at February 2010.

The figures are estimates of the final National Statistic, to give an indication of their accuracy, over the past year the early estimates have been revised by an average of 0.2%. See 'Notes' for more information.

**Table 2.1 Point estimate for the Early Estimates of numbers in working age ESA/IB client group: March 2010 to June 2010**

<i>Thousands</i>		
	<b>National Statistics</b>	<b>Early Estimate</b>
	Number of Claimants	Number of Claimants
May-09	2,621.43	
Aug-09	2,632.74	
Nov-09	2,618.38	
Feb-10	2,614.76	
Mar-10		2,610
Apr-10		2,615
May-10		2,610
Jun-10		2,615

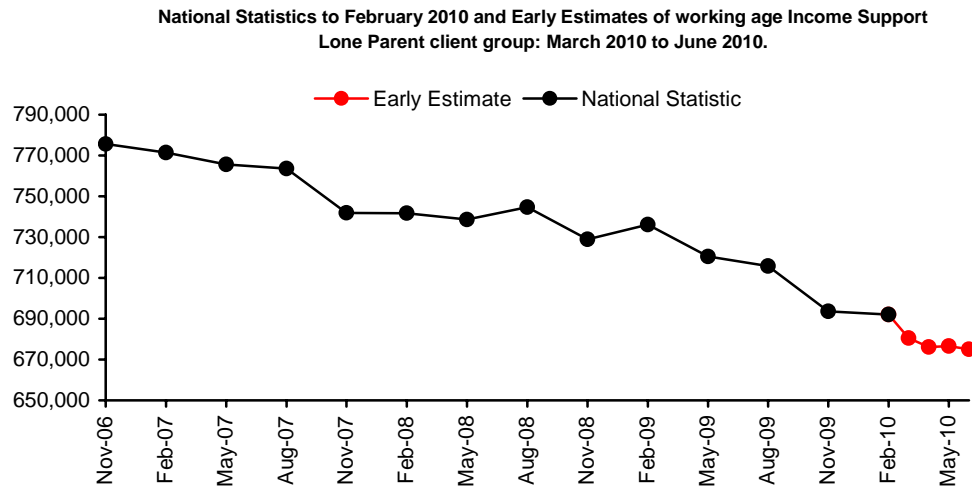
**Notes:**

1. ESA/ incapacity benefits: From November 2008 the "incapacity benefits group" includes Employment and Support Allowance (ESA). ESA replaced Incapacity Benefit and Income Support paid on the grounds of incapacity for new claims from 27 October 2008. Prior to this the "incapacity benefits group" referred to claimants of Incapacity Benefit or Severe Disablement Allowance including people claiming IS on the grounds of Incapacity.



## 2.2 Income Support Lone Parent (ISLP) client group

The early estimates for working age inactive benefit client groups are released monthly and are designed to give indicative, timely information ahead of the publication of full National Statistics. They are not a substitute for the National Statistics and will be replaced when the final quarterly National Statistics covering the same period are published.



The working-age Income Support Lone Parent (ISLP) early estimate for June 2010 is 675 thousand to the nearest 5,000. This represents a fall of 2.5% since February 2010 (the latest full National Statistic figure).

National Statistics are available for quarters up to the end of February 2010. Final figures for the quarter ending May 2010 will be released on 17<sup>th</sup> November 2010. The most recent National Statistics show 692 thousand individuals were in the ISLP client group at February 2010.

The figures are estimates of the final National Statistic, to give an indication of their accuracy, over the past year the early estimates have been revised by an average of 0.4%. See 'Notes' for more information.

**Table 2.2 Point estimate for the Early Estimates of numbers in working age ISLP client group: March 2010 to June 2010**

<i>Thousands</i>		
	<b>National Statistics</b>	<b>Early Estimate</b>
	Number of Claimants	Number of Claimants
May-09	720.48	
Aug-09	715.73	
Nov-09	695.72	
Feb-10	692.02	
Mar-10		680
Apr-10		675
May-10		675
Jun-10		675

**Notes:**

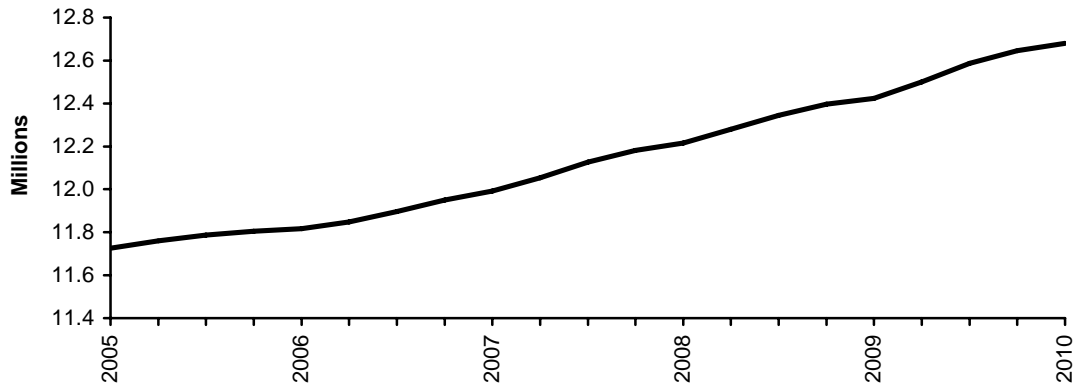
From 24th November 2008 lone parent obligations (LPOs) were introduced and lone parents with a youngest child aged 12 or over were no longer able to make a new or repeat claim for Income Support (IS) solely on the basis of their parental status. Existing IS LPs with a youngest child aged 12 or over had their eligibility removed over a period of time commencing 2nd March 2009. From October 2009 this policy was extended to LPs with a youngest child aged 10 or 11 and from October 2010 the policy will be extended to LPs with a youngest child aged 7 or over.

### 3. Pensioners

#### 3.1 Pensioner client group

The Pensioner client group covers claimants, over State Pension age (for the dates shown here, 60 for females and 65 for males), of at least one of the following benefits: State Pension, Pension Credit, Attendance Allowance, Widow's Benefit, Disability Living Allowance, Incapacity Benefit, and Severe Disablement Allowance. They are split into statistical groups that reflect their main reason for claiming benefit.

**Pensioner Client Group: February 2005 to February 2010**



At February 2010 there were 12.7 million claimants in the Pensioner Client Group, an increase of 256 thousand since February 2009. Of these, 20% were in receipt of Pension Credit. 50% of these Pension Credit claimants were also claiming Attendance Allowance or Disability Living Allowance.

Thousands

	Total	SP and PC: Disabled	SP and PC: Not Disabled	SP but not PC: Disabled	SP but not PC: Not Disabled	PC but not SP: Disabled	PC but not SP: Not Disabled	Neither SP nor PC: Disabled	Neither SP nor PC: Not Disabled
Feb -05	11,726.47	1,037.26	1,268.33	1,273.89	7,938.28	73.49	73.51	37.74	23.98
May -05	11,760.74	1,052.43	1,281.60	1,281.06	7,939.49	73.17	72.88	37.11	23.00
Aug -05	11,786.58	1,065.96	1,280.72	1,298.46	7,933.04	73.71	73.80	37.60	23.30
Nov -05	11,804.43	1,075.10	1,278.42	1,307.14	7,929.69	75.54	75.42	39.48	23.63
Feb -06	11,817.23	1,081.17	1,277.97	1,315.46	7,934.50	73.53	73.75	37.77	23.08
May -06	11,847.97	1,088.48	1,278.31	1,322.93	7,949.50	73.76	74.05	38.06	22.88
Aug -06	11,896.50	1,100.55	1,274.33	1,338.09	7,973.44	74.29	74.59	38.42	22.78
Nov -06	11,949.62	1,113.70	1,269.09	1,351.57	8,004.82	74.87	74.34	38.69	22.54
Feb -07	11,992.45	1,114.06	1,260.09	1,356.42	8,052.20	74.56	74.19	38.60	22.33
May -07	12,053.77	1,122.36	1,252.29	1,370.93	8,097.85	74.82	74.26	38.97	22.29
Aug -07	12,127.16	1,133.46	1,243.25	1,389.71	8,152.28	74.55	73.62	38.92	21.37
Nov -07	12,182.27	1,140.25	1,234.23	1,403.83	8,197.32	74.21	73.15	38.72	20.56
Feb -08	12,216.39	1,139.13	1,223.86	1,410.21	8,237.94	73.56	72.92	38.75	20.02
May -08	12,279.39	1,144.14	1,214.40	1,428.68	8,287.34	73.68	72.69	38.97	19.50
Aug -08	12,344.41	1,155.40	1,206.30	1,448.69	8,331.36	73.72	72.04	38.76	18.14
Nov -08	12,396.06	1,164.55	1,201.42	1,464.57	8,365.41	73.51	71.41	38.17	17.02
Feb -09	12,423.79	1,159.85	1,193.82	1,469.67	8,402.45	73.03	70.86	37.81	16.31
May -09	12,500.78	1,167.68	1,189.05	1,489.12	8,457.71	73.20	70.59	37.76	15.66
Aug -09	12,586.92	1,177.58	1,184.10	1,512.11	8,519.54	72.79	69.22	36.72	14.88
Nov -09	12,645.64	1,182.96	1,178.49	1,526.14	8,565.92	72.63	68.50	36.54	14.46
Feb -10	12,679.66	1,177.97	1,175.36	1,528.61	8,604.63	72.79	68.75	37.27	14.29

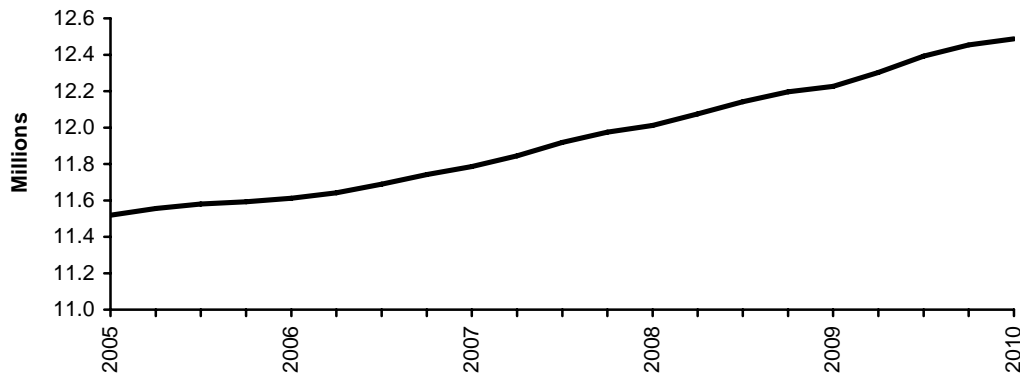
Latest statistical data available from: <http://83.244.183.180/100pc/tabtool.html>



### 3.2 State Pension

State Pension (SP) was introduced on 1st January 1909 and is paid to people who have reached the state pension age and who fulfil the residency and contributions conditions. The state pension age for men is 65 whilst the State Pension age for women born on or after 6 April 1950 but before 6 April 1955 is rising from 60 to 65 between 2010 and 2020. The State Pension age for women born on or after 6 April 1955 but before 6 April 1959 will be 65. State Pension age will increase for both men and women from age 65 to 68 between 2024 and 2046.

**State Pension Recipients: February 2005 to February 2010**



At February 2010, there were 12.5 million claimants of State Pension, a rise of 261 thousand on a year earlier. Of these, 38% were male and 62% female.

The average weekly amount in payment at February 2010 was £102.63, a rise of £6.01 since February 2009.

In quarter to February 2010, there were a total of 154 thousand new claims for State Pension which represents 1.2% of the caseload. Over the same period, 138 thousand claimants left the benefit, representing 1.1% of the caseload at February 2010.

In the year to February 2010, there were a total of 696 thousand new claims for State Pension and 495 thousand claims were closed.

**Table 3.2 State Pension recipients: February 2005 – February 2010**

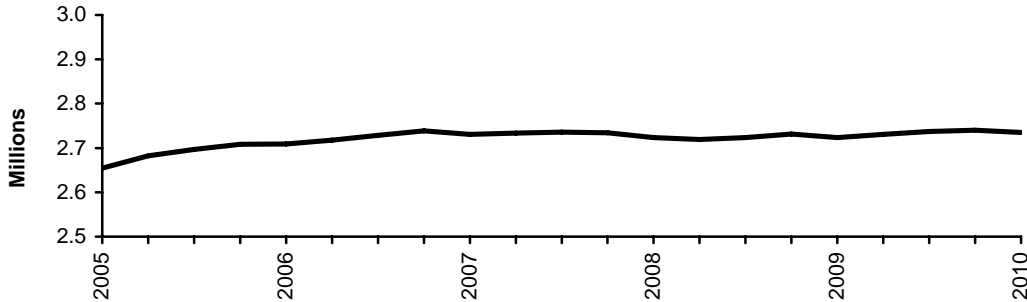
	All	Male	Female
Feb -05	11,519.88	4,322.52	7,197.36
May -05	11,556.81	4,342.15	7,214.66
Aug -05	11,580.50	4,354.75	7,225.74
Nov -05	11,592.75	4,362.20	7,230.55
Feb -06	11,611.59	4,369.79	7,241.80
May -06	11,641.83	4,379.54	7,262.29
Aug -06	11,689.12	4,393.60	7,295.52
Nov -06	11,742.01	4,408.91	7,333.10
Feb -07	11,785.67	4,418.99	7,366.68
May -07	11,846.43	4,437.99	7,408.44
Aug -07	11,919.12	4,463.09	7,456.04
Nov -07	11,976.03	4,484.97	7,491.06
Feb -08	12,011.54	4,499.53	7,512.02
May -08	12,074.99	4,526.79	7,548.20
Aug -08	12,142.20	4,555.63	7,586.57
Nov -08	12,196.44	4,578.74	7,617.70
Feb -09	12,226.26	4,594.18	7,632.08
May -09	12,304.07	4,633.62	7,670.44
Aug -09	12,393.84	4,678.30	7,715.54
Nov -09	12,453.99	4,709.50	7,744.49
Feb -10	12,487.07	4,728.18	7,758.89

Latest statistical data available from: <http://83.244.183.180/100pc/tabtool.html>

### 3.3 Pension Credit

*Pension Credit (PC) was introduced on 6th October 2003 and replaced Minimum Income Guarantee (MIG). For people aged 60 or over, the Guarantee Credit element guarantees an income at a set level. People aged 65 or over (and couples where one member is 65 or over) may also be entitled to Savings Credit if they have modest income from savings, investments or a second pension.*

**Pension Credit Recipients: February 2005 - February 2010**



At February 2010, there were 2.74 million claimants of Pension Credit (3.35 million including partners), a fall of 5 thousand on the previous quarter. Of these, 955 thousand claimed Guarantee Credit only, 1.2 million claimed Guarantee and Savings Credit, and 575 thousand were claiming Savings Credit only.

The average weekly amount of Pension Credit in payment at February 2010 was £56.52, a rise of £3.15 since February 2009.

Experimental statistics on benefit flows show there were 256 thousand new claims to Pension Credit in the year to February 2010. There were 263 thousand new claims to Pension Credit in the year 2008/2009. A small number of claims take a long time to process and are still outstanding at the cut off point for producing these statistics. This means that the statistics undercounts the final number of claims by a small percentage (around 2%).

**Table 3.3 Pension Credit claimants: February 2005 – February 2010**

	Total	Guarantee Credit only	Guarantee Credit & Savings Credit	Savings Credit only	Thousands Still on Minimum Income Guarantee
Feb -05	2,654.67	763.15	1,313.11	578.36	0.06
May -05	2,682.73	767.26	1,321.68	593.74	0.04
Aug -05	2,696.66	772.40	1,317.18	607.04	0.04
Nov -05	2,708.05	776.94	1,313.48	617.60	0.04
Feb -06	2,709.22	773.16	1,332.11	603.93	0.04
May -06	2,717.39	775.57	1,343.23	598.56	0.02
Aug -06	2,728.15	787.30	1,334.41	606.41	0.02
Nov -06	2,738.56	798.13	1,325.87	614.54	0.02
Feb -07	2,730.94	800.11	1,327.78	603.03	0.03
May -07	2,733.50	805.73	1,330.09	597.65	0.02
Aug -07	2,735.72	814.42	1,321.95	599.33	0.03
Nov -07	2,734.54	823.57	1,310.05	600.90	0.03
Feb -08	2,723.14	865.19	1,265.43	592.50	0.02
May -08	2,719.14	882.07	1,246.24	590.80	0.03
Aug -08	2,723.53	889.74	1,241.62	592.15	0.03
Nov -08	2,731.37	901.23	1,232.25	597.86	0.03
Feb-09	2,723.61	913.40	1,214.69	595.49	0.03
May-09	2,730.56	925.71	1,205.23	599.59	0.03
Aug-09	2,737.29	935.59	1,199.61	602.05	0.03
Nov-09	2,739.86	953.04	1,209.00	577.79	0.03
Feb-10	2,735.16	955.39	1,204.66	575.08	0.03

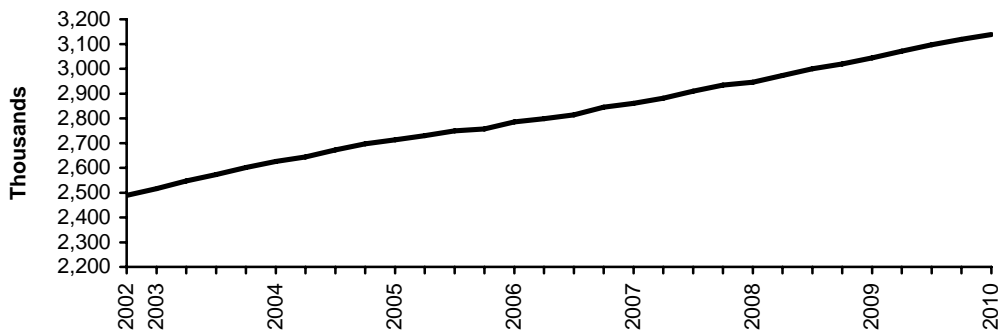
1. Pension Credit replaced MIG on the 6<sup>th</sup> Oct 2003, however a small number of residual cases remain on MIG.

## 4. Disabled and Carers

### 4.1 Disability Living Allowance

*Disability Living Allowance (DLA) was introduced on 1st April 1992 and is a benefit for people who have become disabled before the age of 65 and who need assistance with personal care or mobility.*

**Disability Living Allowance Recipients: November 2002 to February 2010**



At February 2010, 3.14 million people were receiving Disability Living Allowance (not including suspended cases), a rise of 94 thousand on a year earlier. Of these claimants 50% were male. Both the male and female caseloads are rising, males by 46 thousand and females by 48 thousand in the year to February 2010.

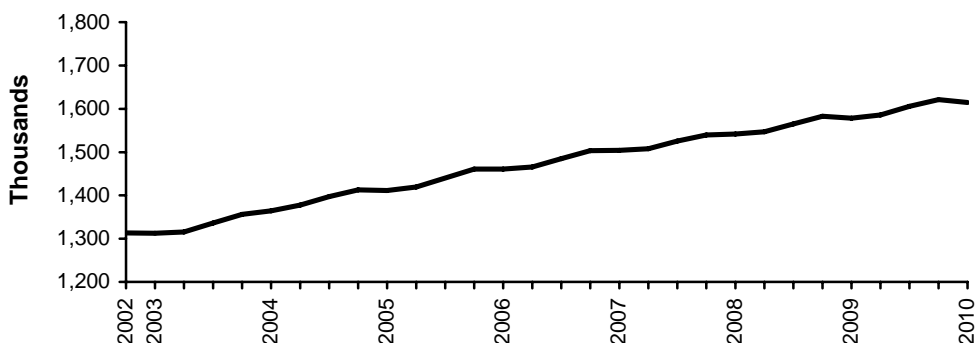
At February 2010, 10% of recipients were children, 57% were working age and 33% were pension age (a small number are an unknown age).

Latest statistical data available from: <http://83.244.183.180/100pc/tabtool.html>

### 4.2 Attendance Allowance

*Attendance Allowance (AA) was introduced on 6th December 1971 and is a benefit for people over the age of 65 who are so severely disabled, physically or mentally, that they need a great deal of help with personal care or supervision. Those requiring constant help receive the higher rate of benefit.*

**Attendance Allowance Cases in Payment: November 2002 to February 2010**



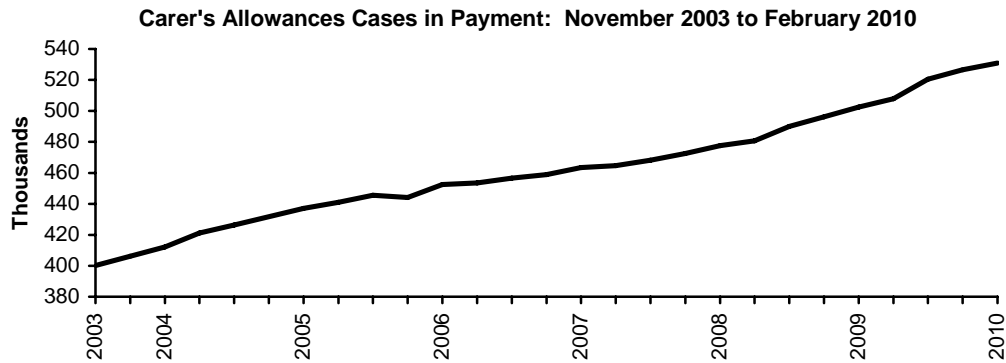
At February 2010 there were 1.61 million people receiving Attendance Allowance (excluding suspended cases), a rise of 36 thousand on a year earlier. Of these, 33% were male and 67% female. Both the male and female caseloads are rising, males by 17 thousand and females by 18 thousand in the year to February 2010. At February 2010, 67% were aged 80 or over.

Latest statistical data available from: <http://83.244.183.180/100pc/tabtool.html>



### 4.3 Carer's Allowance

Carer's Allowance (CA) was introduced on 5th July 1976; it is paid to carers who look after a severely disabled person for at least 35 hours a week. The severely disabled person must be getting either higher or middle rate DLA care component or AA or maximum rate Constant Attendance Allowance with their War Pension or Industrial Injuries Disablement Benefit.



At February 2010, there were 531 thousand people receiving Carer's Allowance (not including underlying entitlement cases). 27% of claimants were male, and 73% female.

At February 2010, there were a further 445 thousand people entitled to Carer's Allowance but not receiving any payment due to overlapping benefit provisions (i.e. underlying entitlement cases).

**Table 4.1 Awards currently in payment for Disability Living Allowance, Carer's Allowance and Attendance Allowance: November 2002 – February 2010**

	<i>Thousands</i>		
	Disability Living Allowance	Attendance Allowance	Carer's Allowance <sup>1</sup>
Nov -02	2,488.49	1,313.74	-
Feb -03	2,516.13	1,312.75	-
May -03	2,547.09	1,315.64	-
Aug -03	2,573.54	1,336.21	400.18
Nov -03	2,601.88	1,356.31	406.23
Feb -04	2,625.39	1,363.81	412.12
May -04	2,644.28	1,377.35	421.18
Aug -04	2,672.16	1,397.30	426.34
Nov -04	2,696.28	1,412.50	431.66
Feb -05	2,712.91	1,411.33	436.94
May -05	2,729.72	1,419.42	441.03
Aug -05	2,749.48	1,440.09	445.43
Nov -05	2,757.64	1,460.25	444.09
Feb -06	2,785.68	1,460.57	452.54
May -06	2,799.16	1,465.59	453.54
Aug -06	2,814.29	1,484.58	456.70
Nov -06	2,845.75	1,503.05	458.93
Feb -07	2,860.79	1,503.85	463.50
May -07	2,881.83	1,507.50	464.67
Aug -07	2,909.98	1,525.61	468.06
Nov -07	2,934.44	1,539.32	472.42
Feb -08	2,945.57	1,541.58	477.66
May -08	2,973.54	1,546.68	480.73
Aug -08	2,999.65	1,565.00	490.03
Nov -08	3,019.70	1,582.81	496.14
Feb -09	3,043.99	1,578.64	502.50
May -09	3,070.61	1,585.79	507.97
Aug -09	3,096.30	1,605.92	520.35
Nov -09	3,119.01	1,621.03	526.62
Feb -10	3,137.73	1,614.17	530.89

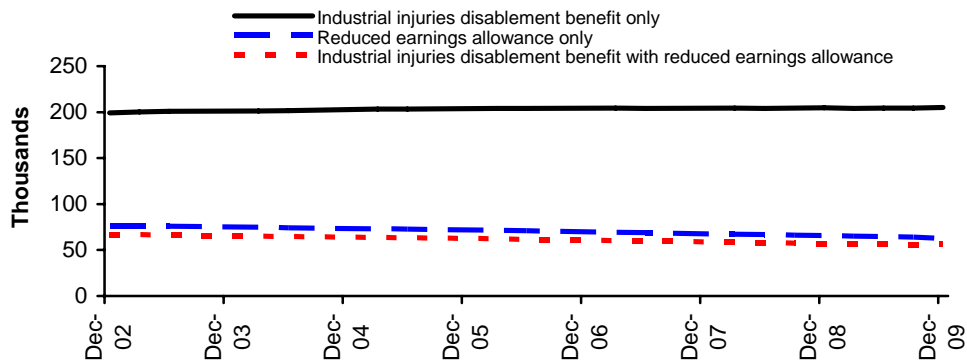
1. Data is not available prior to August 2003.



#### 4.4 Industrial Injuries Disablement Benefit

*Industrial Injuries Disablement Benefit (IIDB) was introduced on 5th July 1948 and is a benefit for people who are disabled because of an industrial accident or prescribed industrial disease. Since 1st October 1986 any claim resulting in an assessment of less than 14% disabled does not normally attract benefit.*

**Industrial injuries disablement benefit and reduced earnings allowance in payment by type of assessments payable: December 2002 - December 2009**



There were 324 thousand people claiming under the Industrial Injuries Disablement Benefit scheme in December 2009, of whom 63% received Industrial Injuries Disablement Benefit only, 19% received Reduced Earnings Allowance only, and 17% received both. The number of people claiming benefit was 1% lower than in December 2008. The average weekly payment was £47.46.

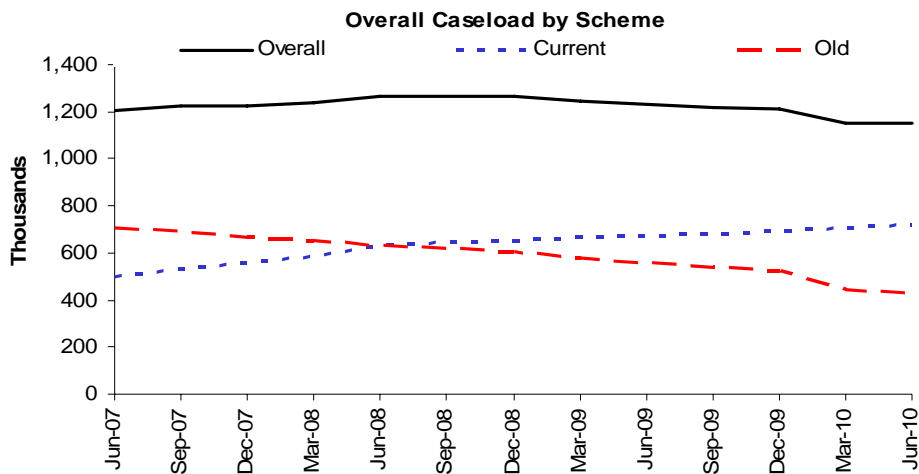
Latest statistical data available from: <http://statistics.dwp.gov.uk/asd/index.php?page=iidb>

## 5. Families & Children

### 5.1 Child Support Agency cases

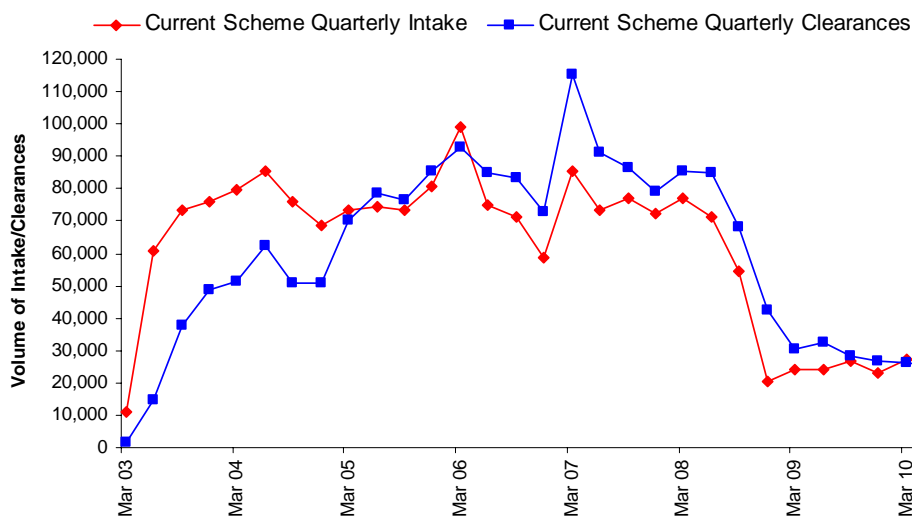
The Child Maintenance and Enforcement Commission (CMEC), established as a non-departmental public body under the Child Maintenance and Other Payments Act 2008, is responsible for the child maintenance system in Great Britain. The Commission assumed responsibility for the Child Support Agency (CSA) from the Department for Work and Pensions (DWP) on 1 November 2008.

These statistics, produced by the Child Maintenance and Enforcement Commission in conjunction with the DWP Information Directorate, contain the most up-to-date tables and breakdowns on the CSA's two existing statutory child maintenance schemes. The CSA statistics presented here were released on 27<sup>th</sup> July 2010.



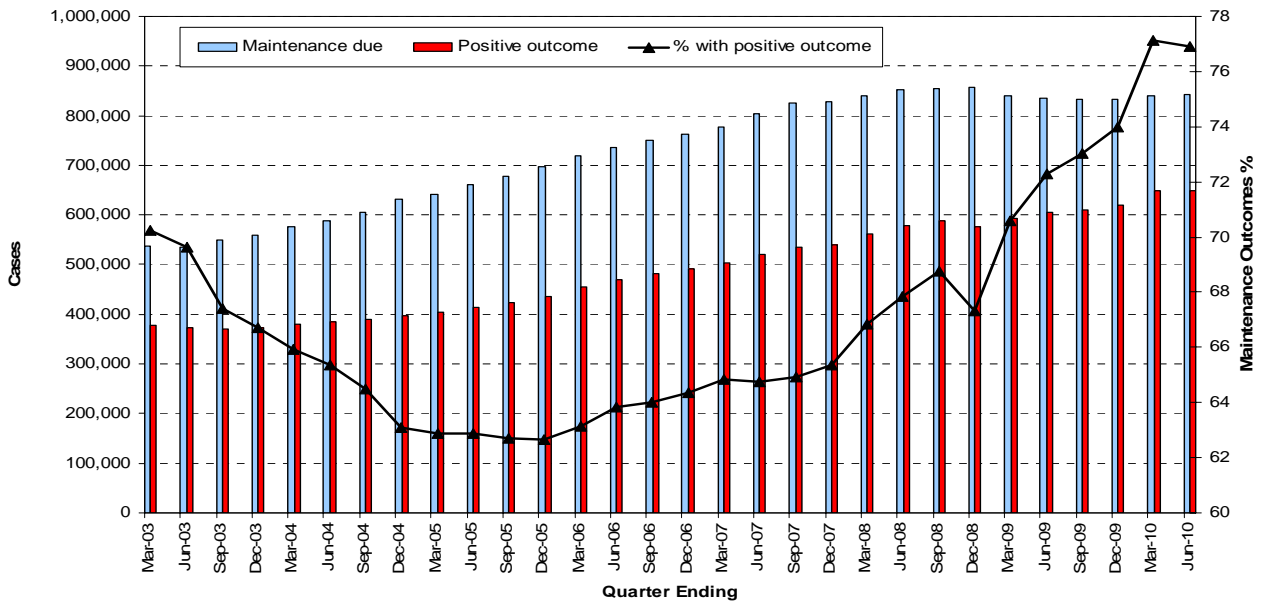
At the end of June 2010, the CSA live and assessed caseload stood at 1.15 million.

#### Current Scheme Intake/Clearances - March 2003 to June 2010



The volume of uncleared current scheme applications has fallen by 400 since March 2010, and is currently at 19,100. This represents an increase of 2% since March 2010.

### Cases Benefiting from Maintenance



In the quarter ending June 2010, 77% of all cases in which maintenance was due had either received maintenance via the CSA collection service, or had a maintenance direct arrangement in place.

Latest statistical data available from: <http://www.childmaintenance.org/en/publications/index.html>



## NOTES

### 1. The Statistical Summary

The Department for Work and Pensions (DWP) publish a Statistical Summary document each month. It is used for the release of a wide range of DWP statistics

The DWP Statistical Summary brings together key National Statistics on DWP administered benefits, some employment programmes and JSA (Jobseeker's Allowance) sanctions and vacancies. To provide a more complete picture of DWP responsibility, statistics on Housing Benefit and Council Tax Benefit (administered by Local Authorities) and the Child Support Agency are also included.

The Summary is published monthly, containing Housing Benefit and Council Tax Benefit together with early estimates of inactive benefit caseloads. Each quarter (in May, August, November and February), a larger document also contains the detail of DWP administered benefits, some employment programmes, JSA sanctions, vacancies and the Child Support Agency.

Alongside the Statistical Summary, there are a large number of tables which enable the user to delve in to the detail. These are provided to the user as:

- The DWP Tabulation Tool – for DWP administered benefits and employment programmes the Tabulation Tool provides the user with an interactive tool to select one of thousands of possible tabulations. This is available at: <http://statistics.dwp.gov.uk/asd/tabtool.asp>. A similar Tabulation Tool, derived from 5% sample data, is also available. Whenever possible, 100% data should be used in preference to 5% estimates, as these are both more accurate and form DWP's headline statistics. Some statistics remain outside the scope of the Tabulation Tool but will continue to be available via the internet as pre-defined summary tables.
- Identical numbers via Nomis (<https://www.nomisweb.co.uk/Default.asp>)
- Separate detailed tables on Housing Benefit and Council Tax Benefit; Employment and Support Allowance; Claimants on out of work benefits
- Tables broken down by Lower Super Output Area (LSOA)
- Other tables and background information via links on the Tabulation Tool pages (e.g. links to long time series spreadsheets; descriptions of the benefit.)

The National Statistics paper "DWP statistics transformed: the modernisation of the DWP's data sources and statistical publications" announced major changes to the National Statistics the Department publishes in 2005. Much of this content is still relevant and is available from:

[http://statistics.dwp.gov.uk/asd/asd1/stats\\_consultation/modstats.pdf](http://statistics.dwp.gov.uk/asd/asd1/stats_consultation/modstats.pdf)

### 2. Statistical groups

DWP has a typology to define Statistical Groups within the client group classifications. The aim of the Statistical Group typology is to present each person by the main reasons they are in contact with the Department. Like the client group classification, each client is classified just once, permitting the estimation of the total number of people claiming one or more benefits. The Statistical Group hierarchy is:

- |   |                                  |
|---|----------------------------------|
| a] Jobseeker  | e] Other income-related benefits |
| b] Employment and Support Allowance and incapacity benefits | f] Disabled                      |
| c] Lone parents   | g] Bereaved                      |
| d] Carers   | h] Housing Benefit               |
|   | i] State Pension only recipients |

From November 2008 the "incapacity benefits statistical group" includes Employment and Support Allowance (ESA). ESA replaced Incapacity Benefit and Income Support paid on the grounds of incapacity for new claims from 27th October 2008. Prior to this the "incapacity benefits group" covered people on Incapacity Benefit or Severe Disablement Allowance, including people claiming Income Support on the grounds of incapacity.



### 3. Jobseeker's Allowance figures at ONS

The preferred source of numbers for Jobseeker's Allowance is the ONS claimant count figure; these are more up to date and contain clerical cases. However, the reason we use the DWP JSA figures is that they are consistent with the other benefits used to produce DWP National Statistics, and permit a wider set of breakdowns. The ONS figures are available from <http://www.statistics.gov.uk/>.

### 4. Flows on and off benefit

Also available are quarterly experimental figures on flows on and off all the main benefits. The historic flows information is available on the tabulation tool up to February 2008. Pension credit information is available via a one-click table: [http://83.244.183.180/100pc/pc/tabtool\\_pc.html](http://83.244.183.180/100pc/pc/tabtool_pc.html)

### 5. Early Estimates

The Early Estimates are designed to give indicative, timely information ahead of the publication of full National Statistics. They are not a substitute for the National Statistics and will be replaced when the final quarterly National Statistics covering the same period are published.

To give an indication of their accuracy, over the past year the early estimates for ESA/IB have been revised by an average of 0.2%, with the biggest revision being 0.33% and the smallest being 0.07%. The early estimates for ISLP have been revised by an average of 0.4%, with the biggest revision being 1.06% and the smallest being 0.07%.

More detailed information can be accessed via the following links:

[http://statistics.dwp.gov.uk/asd/asd1/early\\_ests/technical\\_document\\_final.pdf](http://statistics.dwp.gov.uk/asd/asd1/early_ests/technical_document_final.pdf)

[http://statistics.dwp.gov.uk/asd/asd1/early\\_ests/QandA\\_Early\\_Estimates\\_final.pdf](http://statistics.dwp.gov.uk/asd/asd1/early_ests/QandA_Early_Estimates_final.pdf)

### 6. Welfare Reform

The Lone Parent Obligation policy came into effect from 24 November 2008; Lone Parents (LPs) with a youngest child aged 12 or over were no longer able to make a new or repeat claim for Income Support (IS) solely on the basis of their parental status. Existing IS LPs with a youngest child aged 12 or over are having their eligibility removed over a period of time commencing 2 March 2009. From October 2009 this policy was extended to LPs with a youngest child aged 10 or 11 and from October 2010 the policy will be extended to LPs with a youngest child aged 7 or over.

Most effected LPs will leave IS and claim Jobseeker's Allowance (JSA). However, there are exceptions to these rules where the youngest child can legitimately be over the ages mentioned above. Similarly, some former LPs remain on IS for other reasons (e.g. they have a long term caring responsibility and claim Carer's Allowance). Through analysis of the effected claimants over the next quarters, it can be decided if there is a requirement to change the structure of IS LP statistics. In the meantime, the IS LP series will continue to be defined as 'single IS claimants with a child under 16'.

Employment programme policy is changing, with the intention to move to a new Work Programme. In the interim both earlier new deals and Flexible New Deal (FND) are running concurrently. There will be no gaps in provision between the end of Flexible New Deal and the start of the Work Programme. Since FND was introduced in October 2009 there have been no starts on other JSA employment programmes in FND areas. This has had a significant impact on existing JSA programme statistics (including the New Deals for Young People, 25 plus, 50 plus and Employment Zones). More information on the policy changes, and about any resulting changes to statistical publications will be made available as soon as plans are finalised.

The age at which women reach State Pension age will gradually increase from 60 to 65 between April 2010 and April 2020. The first quarterly statistical summary to be affected will be the November 2010 publication and the first early estimates to be affected will be released in June 2010. The changes will introduce a small increase to the number of working age benefit recipients and a small reduction to the number of pension age recipients. There will also be changes to the way we report benefit recipients as a proportion of the working population. More information can be found at: <http://statistics.dwp.gov.uk/asd/espa.pdf>. For general information about the change to State Pension age, please see:

[http://www.direct.gov.uk/en/Pensionsandretirementplanning/StatePension/DG\\_4017919](http://www.direct.gov.uk/en/Pensionsandretirementplanning/StatePension/DG_4017919)



## 7. Known Issues, Changes and Revisions to the Statistical Summary

Due to problems identifying people moving from employment programmes in to employment, DWP will be unable to issue an update to the employment programme "Jobs" tabulation tools on 11 August 2010. For the same reason, the "Immediate Destination on Leaving" breakdown will be removed from the "Leavers" tabulation tools on 11 August 2010. The currently published numbers are reliable and DWP hope to be able to restore these series on 17 November 2010.

The Main Disabling Condition has been removed from the 5% sample DLA Tabulation Tool due to an error in the codes from May 2006 to August 2007. This error will be corrected as part of the statistical release on 17 November 2010. The previously published numbers for other quarters were unaffected by this issue and will be unchanged when the breakdown is reinstated.

Section 1.3, 1.4 and Table 1.2 in the Summary document have been changed to relate to combined Incapacity Benefit, Severe Disablement Allowance and Employment and Support Allowance data. This provides a consistent time series. In Table 1.2, the Working Age/ Pension Age split has been replaced with a "benefit type" split to show the numbers on each of the three component benefits.

The ESA table pack contains new statistics giving further detail on ESA stage of process, claimants' initial medical condition and the functional impairment recorded at the Work Capability Assessment.

Housing Benefit and Council Tax Benefit Excel Tables 6, 7, 12, and 13 now include an additional breakdown showing the number of benefit recipients in employment.

A number of improvements have been made to the JSA sanctions statistics in August 2010. Most notably, sanctions for Failure to Attend a Back to Work session have been retrospectively included back to April 2009. Flexible New Deal sanctions began to be applied from October 2009. New categories will be introduced to the JSA sanctions Tabulation Tool to report these new sanctions where relevant. These will be applied to both varied and fixed length sanction referrals.

Prior to April 2010, a Failure to Attend Advisory Interview attracted an entitlement decision. Since then, it has instead attracted a Fixed-Length sanction of between 1 and 2 weeks. This change will be reflected in the way we report both fixed length sanctions and entitlement decisions.

Following consultation with users, data on Opinions relating to sanctions decisions will be withdrawn.

Additional minor changes are:

- Jobcentre Plus region has been reinstated in the New Deal for Lone Parents Tabulation Tool.
- Claimants of AA from October 2008 onwards with a main disabling condition of "Obesity" are now classified in the "Other" group, rather than the "Mental Health Causes" group. This will also be true for DLA claimants once the main disabling condition series is reinstated.
- The ability to perform a benefit combination time series of working age percentage of population [LA only tables] is not available. A note on the "equalisation of State Pension age" and the implications for percentage of population tables provides more detail. This can be found at: <http://statistics.dwp.gov.uk/asd/espa.pdf>
- The "MIG/Non-MIG" indicator on the 100% benefit Tabulation Tool for Income Support has been reinstated.
- Due to a small error in the historical series, the County breakdowns have been removed from the Tabulation Tools. Please contact DWP at [stats-consultation@dwp.gsi.gov.uk](mailto:stats-consultation@dwp.gsi.gov.uk) if this removal causes you a serious problem.

Since the general election on 6 May 2010, new Parliamentary Constituency boundaries have been in effect. However, as this publication relates to a period prior to that election, these tables and associated Tabulation Tools use the previous boundaries. The May 2010 statistics will be released in November 2010 and will be broken down by the 2010 constituency boundaries. In the mean time, a spreadsheet has been provided to supply basic breakdowns (as at November 2009) on the new boundaries. This can be found at: [http://statistics.dwp.gov.uk/asd/benefit\\_new\\_parlc\\_table\\_nov09.xls](http://statistics.dwp.gov.uk/asd/benefit_new_parlc_table_nov09.xls)

## 8. Notification of future changes to the Summary

On 31st August 2010 a new breakdown of out-of-work benefit claimants (JSA, IB/ESA, IS, Others) will be produced at Census Output Area (COAs) level for England and Wales. These Experimental Official Statistics



have been developed for local partners to use in the operational planning of worklessness and social inclusion services. These data will be rounded to avoid the potential for disclosure of confidential information. These data will not be published in Scotland as Scottish Datazones are smaller than COAs and therefore problematic for rounding. In Scotland, LSOA data will continue to provide a basis for analysis.

On 15 September 2010, the Summary will include the following changes:

- A time series chart of caseload for Housing Benefit and Council Tax Benefit
- A spreadsheet containing total caseload information at February 2010 by 2010 Parliamentary Constituency boundaries for the following benefits - State Pension, Pension Credit, Incapacity Benefit/Severe Disablement Allowance, Employment and Support Allowance, Income Support, Disability Living Allowance, Attendance Allowance and Carer's Allowance.

On 17 November 2010, the Summary will include the following changes:

- The beginnings of the effects of the equalisation of male and female State Pension ages. More details can be found in section 6 above and also in <http://statistics.dwp.gov.uk/asd/espa.pdf>. Similarly, the effects of other entitlement changes to State Pension. See [http://www.direct.gov.uk/en/Pensionsandretirementplanning/StatePension/DG\\_069498](http://www.direct.gov.uk/en/Pensionsandretirementplanning/StatePension/DG_069498) for details.
- No further updating of the percentage of population Tabulation Tools. More details of this change can be found at: <http://statistics.dwp.gov.uk/asd/espa.pdf>
- Reinstatement of the Main Disabling Condition breakdown in the 5% sample DLA Tabulation Tool.
- Some adjustment of the country breakdown in the State Pension Tabulation Tool
- Parliamentary Constituency breakdowns changed to reflect the 2010 boundaries for May 2010 data onwards.
- Release of a Tabulation Tool for Employment and Support Allowance

## **9. Social Security and Child Support Appeals Tribunal (SSCSA)**

The Independent Tribunal Service was introduced in 1984 to provide an independent appeals system. It was replaced by the Appeals Service (tAS) in April 2000. From 1st April 2006 the Appeals Service, was renamed as the Social Security and Child Support Appeals Tribunal (SSCSA) and became part of The Tribunals Service (an Executive agency within the Department for Justice).

Responsibility for publishing statistics on the appeals now resides with The Tribunals Service and they publish statistical information via their website <http://www.tribunals.gov.uk/>.

## **10. Fraud and Error statistics**

National Statistics are published presenting six-monthly estimates of fraud and error in claims for Income Support, Jobseeker's Allowance, Pension Credit and Housing Benefit, along with an annual estimate of the level of fraud and error in the benefit system as a whole. One-off benefit reviews have been carried out from time to time to estimate fraud and error in claims for other benefits. Reports can be found at [http://research.dwp.gov.uk/asd/asd2/index.php?page=fraud\\_error](http://research.dwp.gov.uk/asd/asd2/index.php?page=fraud_error)

## **11. Take-Up of Income-Related Benefits**

Publications contain information on the take-up of the main income-related benefits in Great Britain: Income Support, Pension Credit, Housing Benefit, Council Tax Benefit and Jobseeker's Allowance (income based). Take-up is measured in two ways. Expenditure take-up compares the total amount of benefit received in the course of a year with the total amount that would have been received if everyone took up their entitlement for the full period of entitlement. Caseload take-up compares the number of benefit claimants – averaged over the year – with the number who would be receiving if everyone took up their entitlement for the full period of entitlement. Data is sourced from the Family Resources Survey and administrative benefit records. Latest published figures are available at <http://statistics.dwp.gov.uk/asd/index.php?page=irb>

## **12. Other National Statistics issued by the Department for Work and Pensions**

Abstract of Statistics for Benefits and Contributions and Indices of Prices and Earnings (annual) – *provides a reference source for those people interested in the main aspects of benefits, contributions and indices of prices and earnings. Latest published figures:* <http://statistics.dwp.gov.uk/asd/index.php?page=abstract>



Child Support Agency Quarterly Summary of Statistics – provides statistics on the Child Support Agency. Latest published figures: <http://statistics.dwp.gov.uk/asd/index.php?page=csa>

Family Resources Survey (annual) - provides information on the incomes and circumstances of private households in the United Kingdom: <http://statistics.dwp.gov.uk/asd/frs/index.php?page=intro>

Households Below Average Income (annual) - provides information on potential living standards as determined by disposable income, changes in income patterns over time and income mobility:  
<http://statistics.dwp.gov.uk/asd/index.php?page=hbai>

Industrial Injuries Disablement Benefit Quarterly Summary of Statistics – provides statistics on people in receipt of Industrial Injuries Disablement Benefit, new claims and newly diagnosed prescribed diseases. Latest published figures: <http://statistics.dwp.gov.uk/asd/index.php?page=iidb>

National Insurance numbers allocated to overseas nationals (Previously migrant workers statistics – quarterly) provides statistics on migrant workers. Latest published figures:  
[http://statistics.dwp.gov.uk/asd/asd1/niall/index.php?page=nino\\_allocation](http://statistics.dwp.gov.uk/asd/asd1/niall/index.php?page=nino_allocation)

Neighbourhood Statistics – Quarterly ward and Lower Super Outputs Area caseloads for Income Support, Jobseeker's Allowance, Incapacity Benefits, Disability Living Allowance, Attendance Allowance, Pension Credit and State Pension are available from: <http://83.244.183.180/NESS/page1.htm>

Pensioner Income Series (annual) - examines the levels, sources and distribution of pensioners' incomes and the position of pensioners within the population income distribution. Latest published figures:  
[http://statistics.dwp.gov.uk/asd/index.php?page=pensioners\\_income](http://statistics.dwp.gov.uk/asd/index.php?page=pensioners_income)

National Insurance Contributions & Qualifying Years and Second Tier Pension Provision (annual) – contains analysis of National Insurance contributions and contracted out pension schemes. Latest published figures:  
[http://statistics.dwp.gov.uk/asd/index.php?page=stpp\\_cq](http://statistics.dwp.gov.uk/asd/index.php?page=stpp_cq)

Tax/Benefit Model Tables (annual) – designed to illustrate the weekly financial circumstances of a selection of hypothetical local authority and private tenants. Latest published figures:  
<http://statistics.dwp.gov.uk/asd/index.php?page=tbmt>

### **13. Other statistical outputs issued by the Department for Work and Pensions**

Benefit Expenditure Tables - financial year historic information on benefit expenditure and caseloads, along with forecasts are available from: <http://statistics.dwp.gov.uk/asd/asd4/index.php?page=expenditure>

Employment and Support Allowance - work capability assessment statistics. Latest published figures:  
[http://statistics.dwp.gov.uk/asd/workingage/index.php?page=esa\\_wca](http://statistics.dwp.gov.uk/asd/workingage/index.php?page=esa_wca)

Pathways to Work Officials Statistics - a comprehensive range of support and provision designed to improve customers' prospects of returning to work. Latest published figures:  
[http://statistics.dwp.gov.uk/asd/workingage/index.php?page=ib\\_ref\\_p2w](http://statistics.dwp.gov.uk/asd/workingage/index.php?page=ib_ref_p2w)

Six Month Offer Statistics - a support package offering up to 500,000 opportunities for Jobseeker's Allowance customers reaching six months unemployment. Latest published figures:  
[http://statistics.dwp.gov.uk/asd/index.php?page=6month\\_offer](http://statistics.dwp.gov.uk/asd/index.php?page=6month_offer)