

# First Release

## DWP STATISTICAL SUMMARY

*This Statistical Summary contains statistics produced by the Department for Work and Pensions (DWP) on Housing Benefit / Council Tax Benefit caseload and inactive benefit early estimates.*



The Housing Benefit / Council Tax Benefit caseload statistics are full National Statistics;

The working age inactive benefit early estimates are official statistics;  
The Flexible New Deal monthly statistics are official statistics.

[See: <http://www.statisticsauthority.gov.uk/national-statistician/types-of-official-statistics>]

National Statistics for the main DWP benefits are released on quarterly basis and can be viewed at: [http://research.dwp.gov.uk/asd/index.php?page=statistical\\_summaries](http://research.dwp.gov.uk/asd/index.php?page=statistical_summaries)

The early estimates for working-age inactive benefit client groups are released monthly and are designed to give indicative, timely information; they are not a substitute for the National Statistics. They will be replaced by the quarterly National Statistics covering the same period when they are published. The National Statistics are the finalised figures.

### Key findings



#### Housing Benefit /Council Tax Benefit

- At April 2011, the total number of people claiming Housing Benefit was 4.86 million, with 5.83 million claiming Council Tax Benefit.
- The total number of people claiming either Housing Benefit or Council Tax Benefit was 6.38 million at April 2011, with 4.30 million claiming both benefits.
- At April 2011, 3.85 million Housing Benefit recipients were single, with almost two-thirds of these being female. Of the 1.65 million recipients with at least one child dependant, 1.13 million of these were single.

Further information can be viewed at:

<http://research.dwp.gov.uk/asd/index.php?page=hbctb> and

[http://research.dwp.gov.uk/asd/asd1/hb\\_ctb/index.php?page=hbctb\\_arc](http://research.dwp.gov.uk/asd/asd1/hb_ctb/index.php?page=hbctb_arc)

#### Early estimates for inactive benefits [OFFICIAL STATISTICS]

- Experimental official statistics show that the Employment and Support Allowance/incapacity benefits (ESA/IB) early estimate for May 2011 is 2.565 million. The latest National Statistic for this client group stands at 2.586 million claimants in November 2010.
- Experimental official statistics show that the working-age Income Support lone parent (ISLP) early estimate is 595 thousand as at the end of May 2011. The latest National Statistic caseload figure for this client group stands at 648 thousand in November 2010.

Further information can be viewed at:

[http://research.dwp.gov.uk/asd/index.php?page=early\\_ests](http://research.dwp.gov.uk/asd/index.php?page=early_ests)

#### Flexible New Deal [OFFICIAL STATISTICS]

- A Flexible New Deal (FND) performance report, containing official statistics broken down to contract level, and an information document containing methodology and technical definitions can be found at: <http://statistics.dwp.gov.uk/asd/index.php?page=ddfnd>

*If you have any comments or requests regarding this publication, please contact DWP via [stats-consultation@dwp.gsi.gov.uk](mailto:stats-consultation@dwp.gsi.gov.uk).*

13<sup>th</sup> July 2011

Coverage: Great Britain

Theme: People and Places

**DWP** Department for  
Work and Pensions

#### Issued by:

Information Directorate  
Department for Work and  
Pensions

Telephone:

Press Office: 0203 267 5144

Website:

[www.dwp.gov.uk](http://www.dwp.gov.uk)

#### Statistician:

Stuart Grant  
Information Directorate  
Department for Work and  
Pensions  
Room BP5201  
Benton Park Road  
Longbenton  
Newcastle-upon-Tyne  
NE98 1YX

Telephone: 0191 216 6263

Email:

[stuart.grant@dwp.gsi.gov.uk](mailto:stuart.grant@dwp.gsi.gov.uk)

#### Next publication:

17<sup>th</sup> August 2011

## Contents

### 1. Housing Benefit / Council Tax Benefit

	<i>page</i>
1.1 Housing Benefit / Council Tax Benefit recipients	3

### 2. Early Estimates for Working-Age Inactive Benefit Client Groups

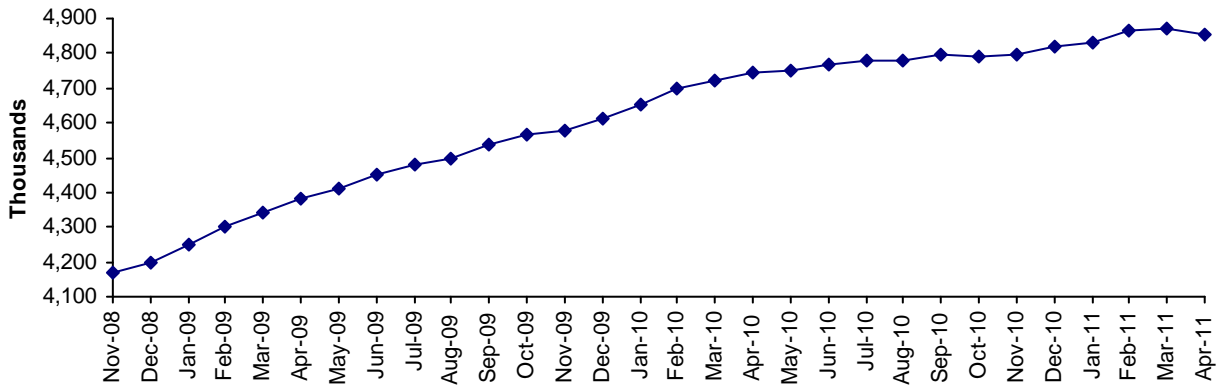
2.1 Employment and Support Allowance / incapacity benefits client group	5
2.2 Income Support lone parent client group	6
Notes	7



**1. National Statistics: Housing Benefit / Council Tax Benefit**

*Housing Benefit (HB) was introduced on 1st April 1983 and is an income-related benefit designed to help people on low incomes pay for rented accommodation whether in or out of work.*

**Housing Benefit Recipients: November 2008 to April 2011**



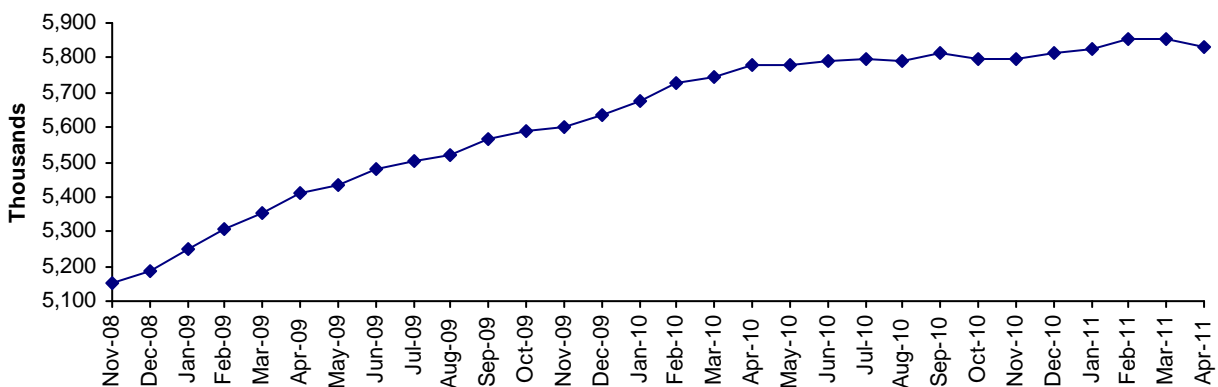
At April 2011 there were 4.86 million recipients of Housing Benefit, of whom almost three-quarters were aged under 65. The average weekly amount of Housing Benefit was £87.29.

68% of Housing Benefit recipients were tenants of Social Sector with 80% of Private Sector tenants receiving the Local Housing Allowance.

67% were also in receipt of Income Support, income-based Jobseeker’s Allowance, income-based Employment and Support Allowance or Pension Credit (Guarantee Credit).

*Council Tax Benefit (CTB) was introduced on 1st April 1993 and is an income-related benefit, calculated in a similar way to Housing Benefit, which has been designed to help people on low incomes pay their Council Tax.*

**Council Tax Benefit Recipients: November 2008 to April 2011**



At April 2011 there were 5.83 million recipients of Council Tax Benefit (figure excludes second adult rebates), of whom 3.62 million were aged under 65. The average weekly amount of Council Tax Benefit was £15.83.

67% of Council Tax Benefit recipients were also in receipt of Income Support, income-based Jobseeker’s Allowance, income-based Employment and Support Allowance or Pension Credit (Guarantee Credit).

**Table 1.1 Housing Benefit (HB) / Council Tax Benefit (CTB) recipients<sup>1,2</sup>: November 2008 – April 2011**

Thousands

	All Housing Benefit (HB) recipients			All Council Tax Benefit (CTB) recipients		
	Total	Tenure Type		Total	Age Group <sup>3</sup>	
		Social Rented Sector	Private Rented Sector		Aged under 65	Aged 65 or over
Nov-08	4,171.94	3,109.37	1,054.81	5,149.39	2,947.33	2,201.97
Dec-08	4,200.16	3,114.59	1,081.25	5,188.10	2,986.34	2,201.34
Jan-09	4,252.25	3,138.38	1,108.59	5,250.81	3,041.80	2,208.70
Feb-09	4,301.79	3,155.98	1,140.04	5,305.98	3,099.97	2,205.48
Mar-09	4,343.92	3,167.39	1,172.42	5,352.41	3,143.86	2,208.03
Apr-09	4,382.08	3,174.78	1,202.52	5,408.83	3,196.63	2,211.72
May-09	4,412.99	3,186.40	1,221.42	5,436.19	3,223.62	2,211.97
Jun-09	4,450.41	3,198.87	1,246.28	5,479.12	3,262.31	2,216.17
Jul-09	4,477.25	3,204.61	1,263.56	5,503.79	3,284.83	2,218.39
Aug-09	4,494.56	3,193.05	1,272.64	5,519.39	3,301.37	2,217.09
Sep-09	4,538.56	3,195.38	1,291.16	5,563.92	3,344.59	2,219.13
Oct-09	4,568.73	3,203.50	1,310.36	5,588.29	3,366.77	2,221.29
Nov-09	4,579.18	3,234.06	1,341.08	5,600.83	3,381.33	2,219.27
Dec-09	4,610.73	3,243.61	1,363.97	5,635.24	3,413.07	2,221.95
Jan-10	4,651.10	3,261.67	1,386.51	5,676.83	3,453.12	2,223.49
Feb-10	4,700.16	3,283.76	1,413.84	5,727.14	3,502.35	2,224.58
Mar-10	4,718.94	3,288.17	1,428.08	5,743.60	3,517.47	2,225.93
Apr-10	4,746.32	3,294.90	1,448.70	5,780.20	3,549.78	2,230.23
May-10	4,751.53	3,293.63	1,455.26	5,780.09	3,553.83	2,226.07
Jun-10	4,765.73	3,299.64	1,463.49	5,788.76	3,562.14	2,226.43
Jul-10	4,777.43	3,303.69	1,471.13	5,798.60	3,571.76	2,226.65
Aug-10	4,776.66	3,300.37	1,473.58	5,791.80	3,567.83	2,223.78
Sep-10	4,797.46	3,308.46	1,486.42	5,811.26	3,585.36	2,225.72
Oct-10	4,789.49	3,299.63	1,487.33	5,794.77	3,572.29	2,222.30
Nov-10	4,798.32	3,300.61	1,495.18	5,795.10	3,573.80	2,221.09
Dec-10	4,817.16	3,303.78	1,510.80	5,812.41	3,590.74	2,221.47
Jan-11	4,833.47	3,308.90	1,521.98	5,825.94	3,605.59	2,220.15
Feb-11	4,865.40	3,322.56	1,540.14	5,854.11	3,636.24	2,217.67
Mar-11	4,869.04	3,320.35	1,545.86	5,851.58	3,633.82	2,217.57
Apr-11	4,856.15	3,312.52	1,540.75	5,828.58	3,619.00	2,209.40

Source: Single Housing Benefit Extract (SHBE)

**Notes:**

- Housing Benefit and Council Tax Benefit recipients are individual claimants who had a live in payment claim on the second Thursday in each month. Council Tax Benefit recipients exclude Second Adult Rebate cases.
- Caseload figures are rounded to the nearest 10. Components may not sum to total due to independent rounding.
- Age groups are based on the age at count date (second Thursday in each month), of either:
  - the recipient if they are single, or
  - the elder of the recipient or partner if claiming as a couple.

Latest statistical data available from: <http://research.dwp.gov.uk/asd/index.php?page=hbctb>

## 2. Official Statistics: Early Estimates for Working-Age Inactive Benefit Client Groups

### 2.1 Employment and Support Allowance / incapacity benefits (ESA/IB) client group

Table 2.1: Working-age ESA/IB client group August 2009 to May 2011

Time Series	thousands	
	National Statistic	Early Estimate
Aug-09	2,632.74	
Nov-09	2,618.38	
Feb-10	2,614.76	
May-10	2,613.10	
Aug-10	2,606.61	
Nov-10	2,586.42	
Dec-10		2,580
Jan-11		2,570
Feb-11		2,570
Mar-11		2,565
Apr-11		2,565
May-11		2,565

The working-age **ESA/IB** early estimate for May 2011 is **2.565 million** to the nearest 5,000. This represents a fall of 0.9 per cent since November 2010 (the latest National Statistic).

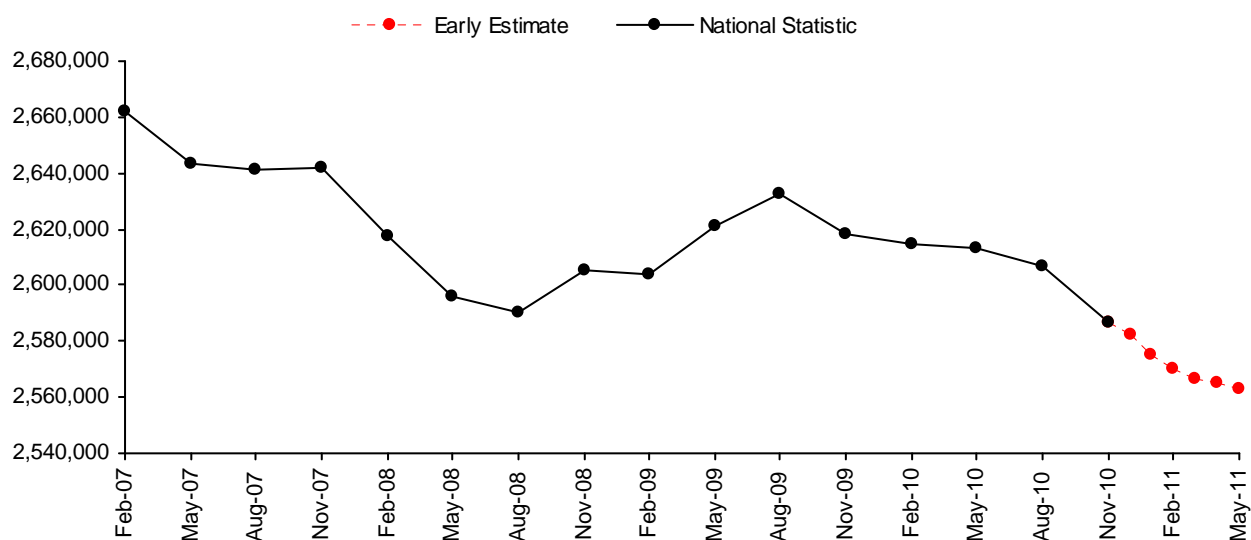
Final figures for the quarter ending February 2011 will be released on 17<sup>th</sup> August 2011. **The most recent National Statistics show 2.59 million individuals were in the ESA/IB client group at November 2010.** See:

<http://research.dwp.gov.uk/asd/index.php?page=tabtool>

These figures are estimates of the final National Statistic, to give an indication of their accuracy, over the past year the early estimates have been revised by an average of 0.2 per cent. See notes section for more information.

The age at which women reach State Pension age will gradually increase from 60 to 65 between April 2010 and April 2020. Please see the Welfare Reform section of the notes for further information.

Figure 2.1: National Statistics to August 2010 and early estimates of numbers in working age ESA/IB client group: September 2010 to May 2011



#### Notes relating to figure 2.1 and table 2.1:

1. ESA/IB: From November 2008 ESA replaced Incapacity Benefit (IB) and Income Support paid on the grounds of incapacity for new claims from 27 October 2008. Prior to this the "incapacity benefits group" referred to claimants of IB or Severe Disablement Allowance including people claiming Income Support on the grounds of incapacity.
2. The red dotted line in the chart above emphasises that the figures are estimates and official statistics.
3. Source data: *DWP Information Directorate: Work and Pensions Longitudinal Study*
4. When the next quarterly National Statistics are published they will be included as a National Statistic in Table 2.1, and the monthly early estimates for this quarter will be removed from Table 2.1.

## 2.2 Income Support lone parent (ISLP) client group

Table 2.2 ISLP client group August 2009 to May 2011

Time Series	thousands	
	National Statistics	Early Estimate
Aug-09	715.73	
Nov-09	695.72	
Feb-10	692.02	
May-10	679.15	
Aug-10	672.35	
Nov-10	648.30	
Dec-10		640
Jan-11		625
Feb-11		615
Mar-11		600
Apr-11		600
May-11		595

The working-age **ISLP** early estimate for May 2011 is **595 thousand** to the nearest 5,000. This represents a fall of 8.2 per cent since November 2010 (the latest National Statistic).

National Statistics are available for quarters up to the end of November 2010. Final figures for the quarter ending February 2011 will be released on 17<sup>th</sup> August 2011. **The most recent National Statistics show 648 thousand individuals were in the ISLP client group at November 2010.** See:

<http://research.dwp.gov.uk/asd/index.php?page=tabtool>

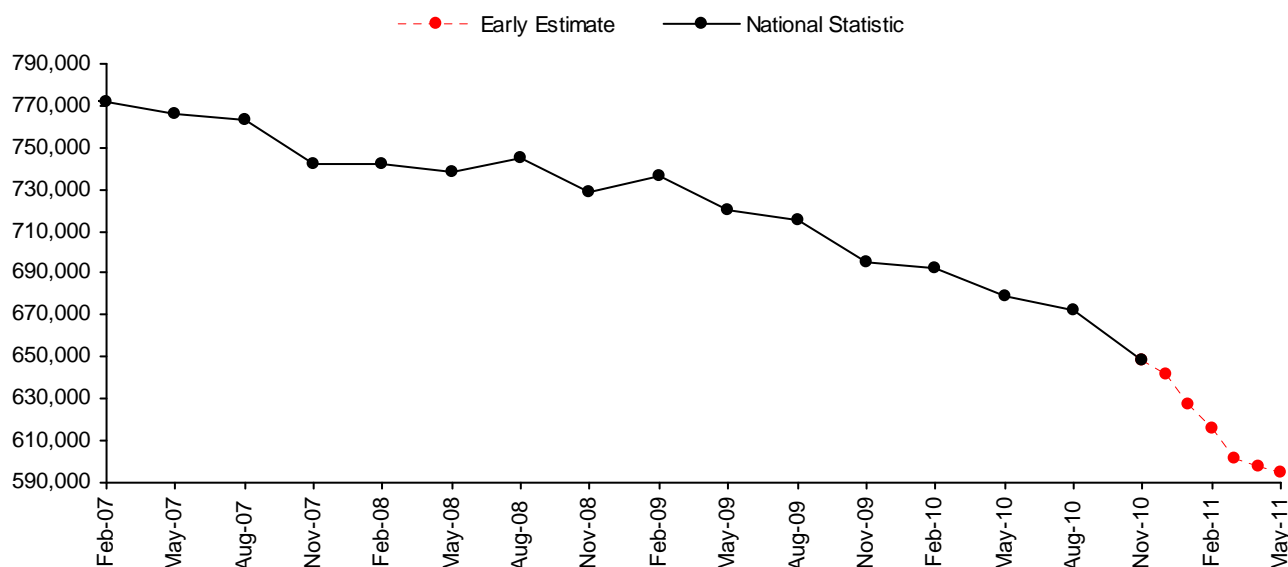
The number of lone parents claiming Income Support has been affected by the Lone Parent Obligations policy changes which came into effect from 24 November 2008. For more information see the notes section.

The figures are estimates of the final National Statistic, to give an indication of their accuracy, over the past year the early estimates have been revised by an average of 0.3 per cent. See the notes section for more information.

The age at which women reach State Pension age will gradually increase from 60 to 65 between April 2010 and

April 2020. Please see the Welfare Reform section of the Notes for further information.

**Figure 2.2: National Statistics to August 2010 and early estimates of numbers in working age ISLP client group: September 2010 to May 2011**



### Notes relating to figure 2.2 and table 2.2:

- ISLP: claimants on IS with child under 16 and no partner. New and repeat customers with the following conditions will no longer be entitled to Income Support:
  - A youngest child aged 12 or over from November 2008;
  - A youngest child aged 10 or over from October 2009;
  - A youngest child aged 7 or over from October 2010.
- The red dotted line in the chart above emphasises that the figures are estimates and official statistics.
- Source data: *DWP Information Directorate: Work and Pensions Longitudinal Study*
- When the next quarterly National Statistics are published they will be included as a quarterly National Statistic in Table 2.2, and the monthly early estimates for this quarter will be removed from Table 2.2.

Latest statistical data available from: [http://research.dwp.gov.uk/asd/index.php?page=early\\_ests](http://research.dwp.gov.uk/asd/index.php?page=early_ests)

## NOTES

### 1. The Statistical Summary

The Department for Work and Pensions (DWP) publish a Statistical Summary document each month. It is used for the release of a wide range of DWP statistics

The DWP Statistical Summary brings together key National Statistics on DWP administered benefits, some employment programmes and JSA (Jobseeker's Allowance) sanctions and Jobcentre Plus vacancies. To provide a more complete picture of DWP responsibility, statistics on Housing Benefit and Council Tax Benefit (administered by Local Authorities) and the Child Support Agency are also included.

The Summary is published monthly, containing National Statistics on Housing Benefit and Council Tax Benefit together with Official Statistics giving early estimates of inactive benefit caseloads. Each quarter (in May, August, November and February), a larger document also contains the detail of DWP administered benefits, some employment programmes, JSA sanctions, Jobcentre Plus vacancies and the Child Support Agency.

Alongside the Statistical Summary, there are a large number of tables which enable the user to delve in to the detail. These are provided to the user as:

- The DWP Tabulation Tool – for DWP administered benefits and employment programmes the Tabulation Tool provides the user with an interactive tool to select one of thousands of possible tabulations. This is available for caseloads and on/off flows at: <http://research.dwp.gov.uk/asd/index.php?page=tabtool>. A similar Tabulation Tool, derived from 5% sample data, is also available. Whenever possible, 100% data should be used in preference to 5% estimates, as these are both more accurate and form DWP's headline statistics. Some statistics remain outside the scope of the Tabulation Tool but will continue to be available via the internet as pre-defined summary tables.
- Identical numbers via Nomis (<https://www.nomisweb.co.uk/Default.asp>)
- Separate detailed tables on Housing Benefit and Council Tax Benefit; and Claimants on out-of-work benefits
- Separate numbers regarding [Flexible New Deal](#)
- Tables broken down by Lower Super Output Area (LSOA)
- Other tables and background information via links on the Tabulation Tool pages (e.g. links to long time series spreadsheets; descriptions of the benefit.)

The National Statistics paper "DWP statistics transformed: the modernisation of the DWP's data sources and statistical publications" announced major changes to the National Statistics the Department publishes in 2005. Much of this content is still relevant and is available from:

[http://statistics.dwp.gov.uk/asd/asd1/stats\\_consultation/modstats.pdf](http://statistics.dwp.gov.uk/asd/asd1/stats_consultation/modstats.pdf)

### 2. National Statistics Code of Practice

DWP complies with the National Statistics Code of Practice and supporting Principles. Detailed policy statements and statement of compliance with the pre-release access to official statistics order 2008 are given below:

[DWP policy statements](#)

Detailed policy and methodology relating to the Statistical Summary can be found at:

- [Quality](#)
- [Methodology](#)
- [Uses and Users](#)
- [Ad hocs and pricing](#)

The UK Statistics Authority report on the compliance with the Code of Practice for Official Statistics for the Statistical Summary is report number 66 at:

<http://www.statisticsauthority.gov.uk/assessment/assessment-reports/index.html>

DWP would like to hear your views on our statistical publications. If you use any of our statistics publications, we would be interested in hearing what you use them for and how well they meet your requirements. Please email DWP at [stats-consultation@dwp.gsi.gov.uk](mailto:stats-consultation@dwp.gsi.gov.uk). If you would like to receive occasional e-mails from DWP to directly inform you of documents seeking the views of users, please email [general.statistics@dwp.gsi.gov.uk](mailto:general.statistics@dwp.gsi.gov.uk) giving details of the DWP publications you use.

An ongoing questionnaire, enabling DWP to target future consultations at interested users; shaping the future direction of statistics development to address user needs; and helping ensure value for money, whilst giving users a structured way of expressing their views is available at:

[http://research.dwp.gov.uk/asd/statistical\\_summary\\_questionnaire.pdf](http://research.dwp.gov.uk/asd/statistical_summary_questionnaire.pdf)

Completed questionnaires can be returned by e-mail to [stats-consultation@dwp.gsi.gov.uk](mailto:stats-consultation@dwp.gsi.gov.uk) or by post to the following address:

Stuart Grant  
Information Directorate  
Department for Work and Pensions  
Room BP5201  
Benton Park Road  
Longbenton  
Newcastle Upon Tyne  
NE98 1YX

### 3. Statistical groups

DWP has a typology to define Statistical Groups within the client group classifications. The aim of the Statistical Group typology is to present each person by the main reasons they are in contact with the Department. Like the client group classification, each client is classified just once, permitting the estimation of the total number of people claiming one or more benefits. The Statistical Group hierarchy is:

a] Jobseeker	e] Other income-related benefits
b] Employment and Support Allowance and incapacity benefits	f] Disabled
c] Lone parents	g] Bereaved
d] Carers	h] Housing Benefit
	i] State Pension only recipients

From November 2008 the "incapacity benefits statistical group" includes Employment and Support Allowance (ESA). ESA replaced Incapacity Benefit and Income Support paid on the grounds of incapacity for new claims from 27th October 2008. Prior to this the "incapacity benefits group" covered people on Incapacity Benefit or Severe Disablement Allowance, including people claiming Income Support on the grounds of incapacity.

### 4. Jobseeker's Allowance figures at ONS

The preferred source of numbers for Jobseeker's Allowance is the ONS claimant count figure; these are more up to date and contain clerical cases. However, the reason we use the DWP JSA figures is that they are consistent with the other benefits used to produce DWP National Statistics, and permit a wider set of breakdowns. The ONS figures are available from Nomis and <http://www.statistics.gov.uk/>.

### 5. Flows on and off benefit

This series has now been re-instated, with a full back series. Pension Credit information is available via a one-click table: [http://83.244.183.180/100pc/pc/tabtool\\_pc.html](http://83.244.183.180/100pc/pc/tabtool_pc.html).

### 6. Early Estimates

The DWP benefit National Statistics have a gap of around five and a half months between the publication and reference dates.

The early estimates are official statistics (see: <http://www.statisticsauthority.gov.uk/national-statistician/types-of-official-statistics>) and published monthly to give indicative, timely information ahead of the publication of full National Statistics. The Office for National Statistics publish the Jobseeker's Allowance claimant count every month, one month in arrears. Consequently, the Early Estimates focus on the economically inactive groups of "incapacity benefits and Employment and Support Allowance" and "Income Support lone parents".

The main reason for the lag in the National Statistics release is because we have to wait three months for a small but significant number of late claims to be processed. Waiting for these late claims makes the National Statistics figures more accurate than the early estimates where we simply predict the number of late claims based on historical levels.



The early estimates are not a substitute for the National Statistics and will be replaced when the final quarterly National Statistics covering the same period are published. However, the estimates are fairly close to the final National Statistics figures. To give an indication of their accuracy, over the past year the early estimates for ESA/IB have been revised by an average of 0.2%, with the biggest revision being 0.50% and the smallest being 0.01%. The early estimates for ISLP have been revised by an average of 0.3%, with the biggest revision being 0.78% and the smallest being 0.12%.

More detailed information can be accessed via the following links:

[http://statistics.dwp.gov.uk/asd/asd1/early\\_ests/technical\\_document\\_final.pdf](http://statistics.dwp.gov.uk/asd/asd1/early_ests/technical_document_final.pdf)

[http://statistics.dwp.gov.uk/asd/asd1/early\\_ests/QandA\\_Early\\_Estimates\\_final.pdf](http://statistics.dwp.gov.uk/asd/asd1/early_ests/QandA_Early_Estimates_final.pdf)

## 7. Welfare Reform

The Lone Parent Obligation policy came into effect from 24 November 2008; Lone Parents (LPs) with a youngest child aged 12 or over were no longer able to make a new or repeat claim for Income Support (IS) solely on the basis of their parental status. Existing IS LPs with a youngest child aged 12 or over are having their eligibility removed over a period of time commencing 2 March 2009. From October 2009 this policy was extended to LPs with a youngest child aged 10 or 11 and from October 2010 the policy was extended to LPs with a youngest child aged 7 or over.

Most effected LPs will leave IS and claim Jobseeker's Allowance (JSA). However, there are exceptions to these rules where the youngest child can legitimately be over the ages mentioned above. Similarly, some former LPs remain on IS for other reasons (e.g. they have a long term caring responsibility and claim Carer's Allowance). Through analysis of the effected claimants over the next quarters, it can be decided if there is a requirement to change the structure of IS LP statistics. In the meantime, the IS LP series will continue to be defined as 'single IS claimants with a child under 16'.

Employment programme policy is changing, with the intention to move to a new Work Programme. In the interim both the earlier new deals and Flexible New Deal (FND) are running concurrently. There will be no gaps in provision between the end of Flexible New Deal and the start of the Work Programme. Since FND was introduced in October 2009 there have been no starts on other JSA employment programmes in FND areas. This has had a significant impact on existing JSA programme statistics (including the New Deals for Young People, 25 plus, 50 plus and Employment Zones). Headline official statistics (see: <http://www.statisticsauthority.gov.uk/national-statistician/types-of-official-statistics>) on FND starts and jobs are part of the Quarterly Statistical Summary release. More detailed FND breakdowns (contract level) are available in the Performance Report (<http://research.dwp.gov.uk/asd/index.php?page=ddfnd>). DWP will be publishing statistics on Work Programme in due course.

The age at which women reach State Pension age will gradually increase from 60 to 65 between April 2010 and April 2020. The first quarterly statistical summary to be affected was the November 2010 publication and the first early estimates to be affected were released in June 2010. The changes will introduce a small increase to the number of working age benefit recipients and a small reduction to the number of pension age recipients. There will also be changes to the way we report benefit recipients as a proportion of the working population. More information can be found at: <http://statistics.dwp.gov.uk/asd/espa.pdf>. For general information about the change to State Pension age, please see:

[http://www.direct.gov.uk/en/Pensionsandretirementplanning/StatePension/DG\\_4017919](http://www.direct.gov.uk/en/Pensionsandretirementplanning/StatePension/DG_4017919)

## 8. Known Issues, Changes and Revisions to the Statistical Summary

- The continuing effect of the equalisation of male and female State Pension ages. More details can be found in section 7 of these Notes and also in <http://statistics.dwp.gov.uk/asd/espa.pdf>.

## 9. Notification of future changes to the Summary

On 17<sup>th</sup> August 2011:

- Reinstatement of the Parliamentary Constituency breakdowns on the DWP Tabulation Tool for the PC 5% samples.
- As of 1st June 2011 there have been no new referrals to FND. Therefore, we currently expect that the last monthly production of these tables will be released on 17<sup>th</sup> August 2011. However, the existing tables will remain available for historical analysis.

## 10. Northern Ireland Statistics

The statistics in this Summary cover Great Britain (England, Scotland and Wales) only. Comparable benefit statistics for Northern Ireland can be found at:

[http://www.dsdni.gov.uk/index/stats\\_and\\_research/benefit\\_publications.htm](http://www.dsdni.gov.uk/index/stats_and_research/benefit_publications.htm)

and

[http://www.dsdni.gov.uk/index/stats\\_and\\_research/geographical\\_data\\_on\\_ss\\_benefits.htm](http://www.dsdni.gov.uk/index/stats_and_research/geographical_data_on_ss_benefits.htm) for geographical breakdowns

Currently, the Northern Ireland statistics use extracts from the benefit systems very similar to those used to create the 5% sample numbers for Great Britain (although the Northern Ireland sample size is usually greater than 5%). The directly equivalent GB numbers can be found at: <http://83.244.183.180/5pc/tabtool.html>. However, Northern Ireland statistics are shortly due to move to extracts from the benefit systems very similar to those used to create the WPLS/100% sample numbers (<http://83.244.183.180/100pc/tabtool.html>) for Great Britain. However, Northern Ireland statistics will ignore the effect of retrospection.

Comparisons between the Great Britain 5% samples and 100% samples, plus the effect of retrospection can be seen in documents entitled "Differences between WPLS and 5% sample data" in the "Useful Resources and Sites" section of each single benefit 100% sample Tabtool (e.g.

[http://83.244.183.180/100pc/is/tabtool\\_is.html](http://83.244.183.180/100pc/is/tabtool_is.html))

Housing Benefit is a social security benefit paid by the Housing Executive. It helps people on a low income pay their rent and rates. In Northern Ireland, rates are paid instead of Council Tax. Limited Housing Benefit numbers are available in the summary bulletin at:

[http://www.dsdni.gov.uk/index/publications/summary\\_statistics\\_bulletin.htm](http://www.dsdni.gov.uk/index/publications/summary_statistics_bulletin.htm). For people who own their own property and need help with rates only, Land and Property Services (LPS) provide rates relief payments. Statistics on those receiving rates relief only are not available.

Employment Programmes are different in Northern Ireland. Hence, statistics are not directly comparable. However, numbers on the various schemes are available from:

<http://www.delni.gov.uk/index/statsandresearch/training-and-employment-stats.htm>.

Vacancy statistics for Northern Ireland are available at <http://www.detini.gov.uk/deti-stats-index/stats-surveys/stats-vacancy-stats.htm> and at <http://www.delni.gov.uk/index/statsandresearch/labour-market-information-stats/vacancies.htm>

Statistics on Jobcentre Plus Sanctions and Child Maintenance are not currently published for Northern Ireland.

## 11. Social Security and Child Support Appeals Tribunal (SSCSA)

The Independent Tribunal Service was introduced in 1984 to provide an independent appeals system. It was replaced by the Appeals Service (tAS) in April 2000. From 1st April 2006 the Appeals Service, was renamed as the Social Security and Child Support Appeals Tribunal (SSCSA) and became part of The Tribunals Service (an Executive agency within the Department for Justice).

Responsibility for publishing statistics on the appeals now resides with The Tribunals Service and they publish statistical information via their website <http://www.tribunals.gov.uk/>.

## 12. Fraud and Error statistics

National Statistics are published presenting six-monthly estimates of fraud and error in claims for Income Support, Jobseeker's Allowance, Pension Credit and Housing Benefit, along with an annual estimate of the level of fraud and error in the benefit system as a whole. One-off benefit reviews have been carried out from time to time to estimate fraud and error in claims for other benefits. Reports can be found at

[http://research.dwp.gov.uk/asd/asd2/index.php?page=fraud\\_error](http://research.dwp.gov.uk/asd/asd2/index.php?page=fraud_error)

## 13. Take-Up of Income-Related Benefits

Publications contain information on the take-up of the main income-related benefits in Great Britain: Income Support, Pension Credit, Housing Benefit, Council Tax Benefit, Employment and Support Allowance (income related) and Jobseeker's Allowance (income based). Take-up is measured in two ways. Expenditure take-up compares the total amount of benefit received in the course of a year with the total amount that would have been received if everyone took up their entitlement for the full period of entitlement. Caseload take-up compares the number of benefit claimants – averaged over the year – with the number who would be receiving if everyone took up their entitlement for the full period of entitlement. Data is sourced from the Family

Resources Survey and administrative benefit records. Latest published figures are available at <http://statistics.dwp.gov.uk/asd/index.php?page=irb>

#### **14. Other National Statistics issued by the Department for Work and Pensions**

Abstract of Statistics for Benefits and Contributions and Indices of Prices and Earnings (annual) – *provides a reference source for those people interested in the main aspects of benefits, contributions and indices of prices and earnings. Latest published figures:* <http://statistics.dwp.gov.uk/asd/index.php?page=abstract>

Child Support Agency Quarterly Summary of Statistics – *provides statistics on the Child Support Agency. Latest published figures:* <http://statistics.dwp.gov.uk/asd/index.php?page=csa>

Family Resources Survey (annual) - *provides information on the incomes and circumstances of private households in the United Kingdom:* <http://statistics.dwp.gov.uk/asd/frs/index.php?page=intro>

Households Below Average Income (annual) - *provides information on potential living standards as determined by disposable income, changes in income patterns over time and income mobility:* <http://statistics.dwp.gov.uk/asd/index.php?page=hbai>

Industrial Injuries Disablement Benefit Quarterly Summary of Statistics – *provides statistics on people in receipt of Industrial Injuries Disablement Benefit, new claims and newly diagnosed prescribed diseases. Latest published figures:* <http://statistics.dwp.gov.uk/asd/index.php?page=iidb>

National Insurance numbers allocated to overseas nationals (Previously migrant workers statistics – quarterly) *provides statistics on migrant workers. Latest published figures:* [http://statistics.dwp.gov.uk/asd/asd1/niall/index.php?page=nino\\_allocation](http://statistics.dwp.gov.uk/asd/asd1/niall/index.php?page=nino_allocation)

Neighbourhood Statistics – *Quarterly ward and Lower Super Outputs Area caseloads for Income Support, Jobseeker's Allowance, Incapacity Benefits, Disability Living Allowance, Attendance Allowance, Pension Credit and State Pension are available from:* <http://83.244.183.180/NESS/page1.htm>

Pensioner Income Series (annual) - *examines the levels, sources and distribution of pensioners' incomes and the position of pensioners within the population income distribution. Latest published figures:* [http://statistics.dwp.gov.uk/asd/index.php?page=pensioners\\_income](http://statistics.dwp.gov.uk/asd/index.php?page=pensioners_income)

National Insurance Contributions & Qualifying Years and Second Tier Pension Provision (annual) – *contains analysis of National Insurance contributions and contracted out pension schemes. Latest published figures:* [http://statistics.dwp.gov.uk/asd/index.php?page=stpp\\_cq](http://statistics.dwp.gov.uk/asd/index.php?page=stpp_cq)

Tax/Benefit Model Tables (annual) – *designed to illustrate the weekly financial circumstances of a selection of hypothetical local authority and private tenants. Latest published figures:* <http://statistics.dwp.gov.uk/asd/index.php?page=tbmt>

#### **15. Other statistical outputs issued by the Department for Work and Pensions**

Benefit Expenditure Tables - *financial year historic information on benefit expenditure and caseloads, along with forecasts are available from:* <http://statistics.dwp.gov.uk/asd/asd4/index.php?page=expenditure>

Employment and Support Allowance - *work capability assessment statistics. Latest published figures:* [http://statistics.dwp.gov.uk/asd/workingage/index.php?page=esa\\_wca](http://statistics.dwp.gov.uk/asd/workingage/index.php?page=esa_wca)

Pathways to Work Officials Statistics - *a comprehensive range of support and provision designed to improve customers' prospects of returning to work. Latest published figures:* [http://statistics.dwp.gov.uk/asd/workingage/index.php?page=ib\\_ref\\_p2w](http://statistics.dwp.gov.uk/asd/workingage/index.php?page=ib_ref_p2w)

Six Month Offer Statistics - *a support package offering up to 500,000 opportunities for Jobseeker's Allowance customers reaching six months unemployment. Latest published figures:* [http://statistics.dwp.gov.uk/asd/index.php?page=6month\\_offer](http://statistics.dwp.gov.uk/asd/index.php?page=6month_offer)