

SFR 10/2013

19 March 2013

Coverage: England

Theme: Children,
Education and Skills

PUPIL ABSENCE IN SCHOOLS IN ENGLAND, INCLUDING PUPIL CHARACTERISTICS: 2011/12

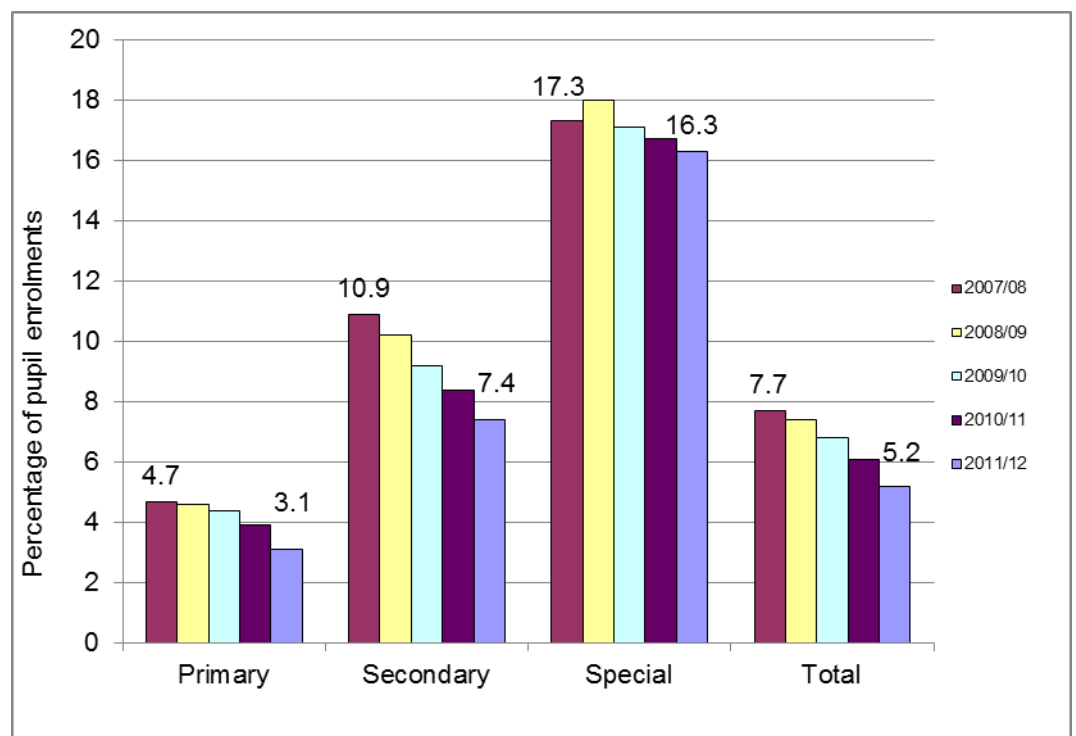
INTRODUCTION

This Statistical First Release (SFR) reports on absence in state-funded primary, secondary and special schools during the 2011/12 school year. It provides information on the levels of absence (overall, authorised and unauthorised) by type of school, on persistent absentees, on absence by reason and by pupil characteristics.

SUMMARY

There have been decreases in two key measures of absence, the percentage of pupils who are persistent absentees (those who have missed around 15 per cent or more of possible sessions) and the overall absence rate – as shown in chart 1 and chart 2 below.

Chart 1: Percentage of pupil enrolments that are persistent absentees



Issued by

Department for Education
Sanctuary Buildings
Great Smith Street
London SW1P 3BT

Telephone:

Press Office
020 7783 8300

Public Enquiries

0370 000 2288

Statistician

Andrew Clarke

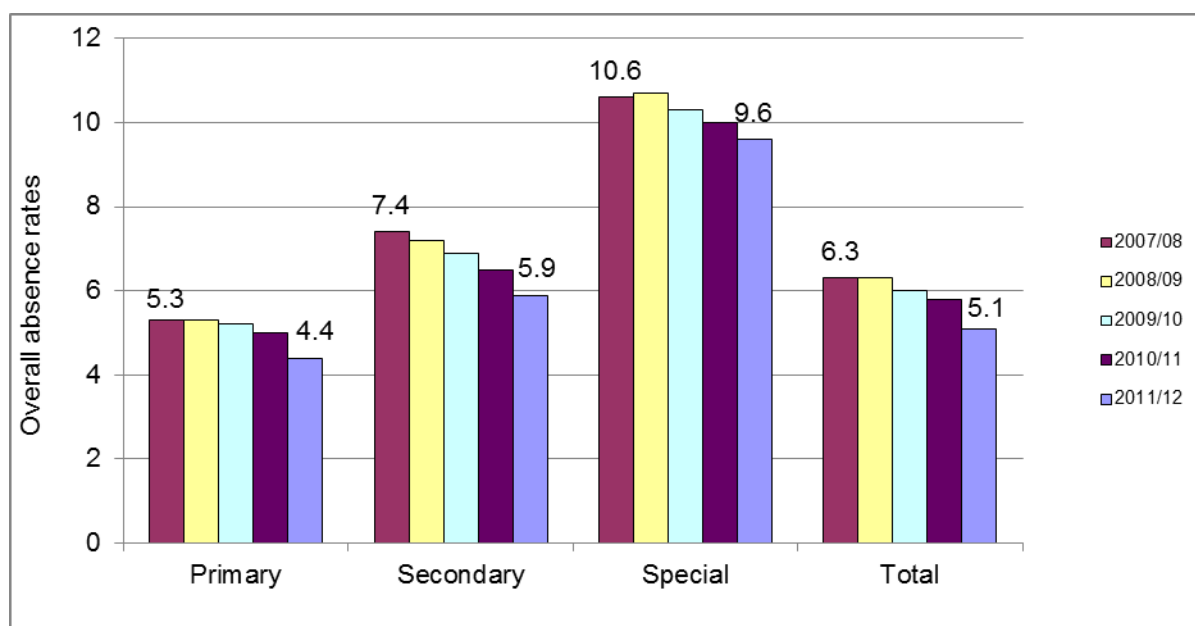
Email

schools.statistics@education.gov.uk
www.gsi.gov.uk

Internet

<http://www.education.gov.uk/researchandstatistics/statistics/a00221993>

Chart 2: Overall absence rates – the percentage of possible sessions missed



Absence levels are substantially higher for pupils with special educational needs compared to those with no special educational needs and the gap has changed little over recent years. Similarly, absence levels are substantially higher for those known to be eligible for and claiming free school meals and the gap has changed little.

The fall in absence levels between 2010/11 and 2011/12 was larger than the fall in previous years and this was primarily due to the absence level in autumn term 2011 being substantially lower than in previous autumn terms. See Technical Note 22 for an explanation of factors contributing to low absence levels in autumn term 2011.

KEY POINTS

Persistent absentees (Table 1.2)

A persistent absentee is defined as having 46 or more sessions of absence (authorised and unauthorised) during the year, around 15 per cent or more overall absence rate

- The percentage of pupil enrolments classed as persistent absentees decreased, from 6.1 per cent in 2010/11 to 5.2 per cent in 2011/12, continuing the downward trend. (Table 1.2)
- The rate of overall absence for persistent absentees was 24.7 per cent, more than four times the rate for all pupils. (Tables 1.1 and 1.2)
- Across state-funded primary, secondary and special schools, persistent absentees accounted for 25.1 per cent of overall absence; 19.5 per cent of authorised absence and 48.9 per cent of unauthorised absence. (Table 1.2)
- The percentage of the school population who were persistent absentees was 9.0 per cent or lower in 97 per cent of state-funded primary schools and 72 per cent of state-funded secondary schools. (Table 4.1)

Absence rates (Table 1.1)

The *percentage of possible sessions missed through absence*

- The overall absence rate decreased, from 5.8 per cent in 2010/11 to 5.1 per cent in 2011/12, continuing the downward trend.
- The authorised absence rate decreased, from 4.7 per cent to 4.1 per cent, continuing the downward trend.
- There was a small decrease in the unauthorised absence rate, from 1.1 per cent to 1.0 per cent, this rate has changed little over the last five years.

Reason for absence (Table 2.1)

- The most commonly reported reason for absence was “**illness (not medical or dental appointments)**”, as in previous years, which accounted for 58.3 per cent of all absences, or looking at it another way 3.0 per cent of all possible sessions were missed through illness.
- Absence for family holidays accounted for 0.5 per cent of all possible sessions in 2011/12, the same as in 2010/11.

Absence by pupil characteristics (Tables 5.1 and 5.2)

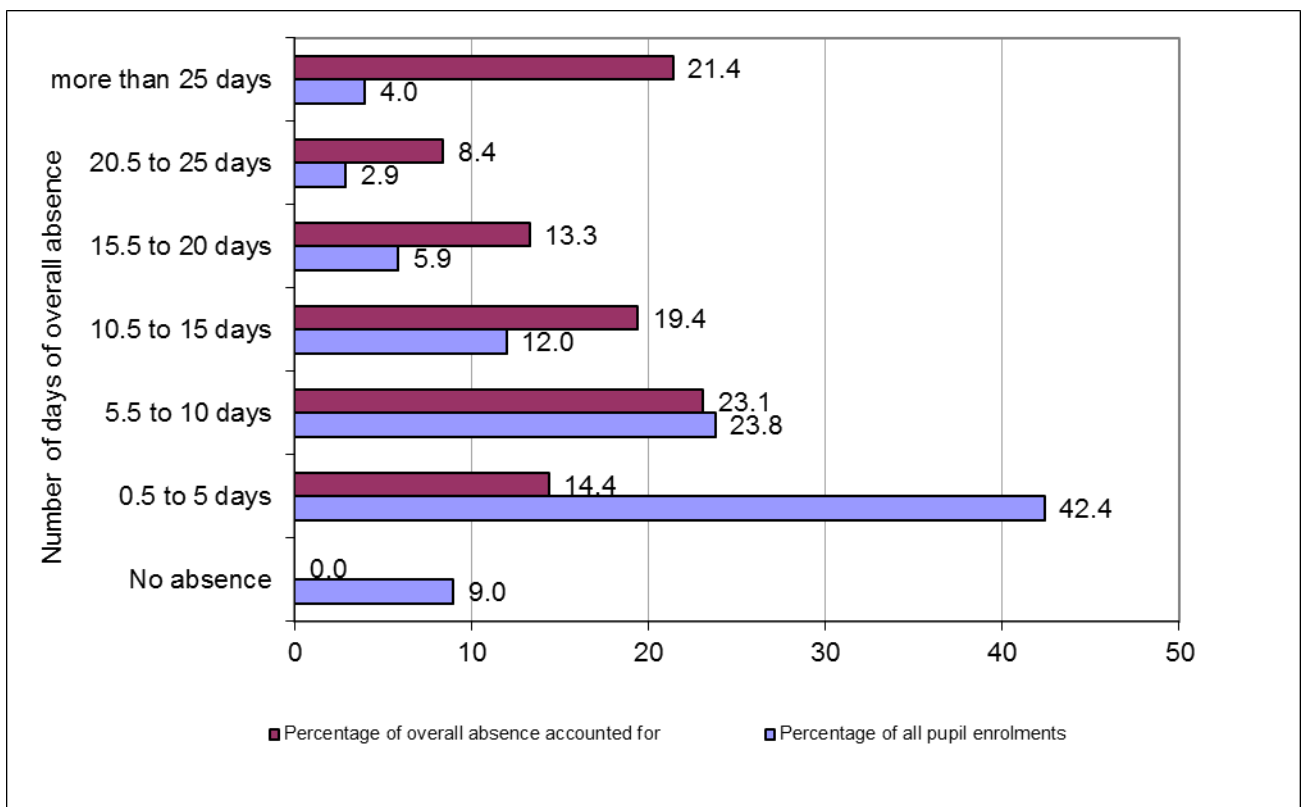
- The rate of overall absence for those pupils who are eligible for and claiming free school meals (7.4 per cent) was 1.6 times higher than that for those pupils not eligible for and claiming free school meals. (4.6 per cent). (Table 5.1)
- Pupils who were known to be eligible for and claiming free school meals were more likely to be persistent absentees, 11.0 per cent of those pupils eligible and claiming compared with 4.0 per cent for those pupils not eligible for and claiming free school meals. (Table 5.2)
- For pupils with special educational needs, the highest rate of overall absence was amongst those pupils with a statement of special educational needs (8.2 per cent). This is 1.8 times that for those pupils with no identified special educational needs (4.6 per cent). The overall absence rate for pupils at *School Action Plus* was 7.7 per cent and for pupils at *School Action* it was 6.4 per cent. (Table 5.1)
- Of all pupils with a statement of special educational needs 13.4 per cent were persistent absentees, compared to 3.8 per cent of those pupils with no identified special educational need. Of pupils at *School Action Plus* 11.9 per cent were persistent absentees and of pupils at *School Action* 8.4 per cent were persistent absentees. (Table 5.2)
- Absence rates start to increase at secondary school age. The rate of overall absence for pupils in national curriculum year group 11 (7.4 per cent) was 1.6 times the rate of overall absence for those pupils in national curriculum year group 7 (4.6 per cent). (Table 5.1)
- Absence rates were highest for Traveller of Irish Heritage (21.5 per cent overall absence) and Gypsy /Roma (15.6 per cent overall absence) ethnic groups. The rates of overall absence for pupils of Mixed and White ethnic origin were above the national average (5.4 per cent and 5.2 per cent, respectively); for pupils of Asian, Black and Chinese ethnic origin the rates were below the

national average (4.7 per cent, 3.8 per cent and 3.0 per cent, respectively). The overall absence rate for all pupils was 5.1 per cent. Caution is recommended in interpreting the data for Traveller of Irish Heritage children and Gypsy/Roma children due to potential under-reporting for these ethnic classifications. (Table 5.3)

Distribution of absence

- 9.0 per cent of pupil enrolments had no absence from school in 2011/12. (Table 3.1)
- Per pupil enrolment, the average total absence in state-funded primary schools was just over seven school days (around 14 sessions); in state-funded secondary schools it was just under nine school days (around 18 sessions); and in special schools the figure was just under 14 school days (around 28 sessions).

Chart 3: Distribution of enrolments by length of overall absence



Income deprivation affecting children indices (IDACI)

- The rate of overall absence for pupils living in the most deprived areas (6.0 per cent) is 1.6 times higher than that for pupils living in the least deprived areas (3.8 per cent). Absence rates have decreased more in the most deprived areas than in the least deprived areas.

CHARTS

- Chart 1** State-funded primary, secondary and special schools: Percentage of pupil enrolments that are persistent absentees, England 2007/08 to 2011/12
- Chart 2** State-funded primary, secondary and special schools: Overall absence rates by sector, England 2007/08 to 2011/12
- Chart 3** State-funded primary, secondary and special schools: Distribution of enrolments by length of overall absence, England 2011/12

TABLES

- Table 1.1** State-funded primary, secondary and special schools: Pupil absence by type of school, England 2007/08 to 2011/12
- Table 1.2** State-funded primary, secondary and special schools: Persistent absentees, England 2007/08 to 2011/12
- Table 2.1** State-funded primary, secondary and special schools: Absence by reason and gender, England 2011/12
- Table 2.2** State-funded primary, secondary and special schools: Absence by reason for persistent absentees, England 2011/12
- Table 3.1** State-funded primary, secondary and special schools: Distribution of enrolments by length of overall absence, England 2011/12
- Table 3.2** State-funded primary, secondary and special schools: Percentage of enrolments by their overall absence rates, England 2011/12
- Table 4.1** State-funded primary, secondary and special schools: Number of schools by the percentage of persistent absentees, England 2011/12
- Table 5.1** State-funded primary, secondary and special schools: Pupil absence by characteristics, England 2011/12
- Table 5.2** State-funded primary, secondary and special schools: Characteristics of persistent absentees, England 2011/12
- Table 5.3** State-funded primary, secondary and special schools: Pupil absence by ethnic group, England 2011/12
- Table 5.4** State-funded primary, secondary and special schools: Persistent absentees by ethnic group, England 2011/12
- Table 5.5** State-funded primary, secondary and special schools: Absence rates by type of special educational need, England 2011/12

Table 6.1 State-funded primary, secondary and special schools: Pupil absence by Income Deprivation Affecting Children Indices (IDACI) decile of pupil residence, England 2010/11 and 2011/12

LOCAL AUTHORITY ANALYSIS

Supplementary tables, including figures at local authority (LA), region, local authority district level and (IDACI) are available on the DfE statistics website:

<http://www.education.gov.uk/researchandstatistics/statistics/a00221993>

Table 7.1 State-funded primary, secondary and special schools: Pupil absence by type of school, by local authority area and region, England 2011/12

Table 8.1 Pupil absence in schools by degree of rurality of school location, England 2011/12

Table 8.2 Pupil absence in schools by local authority district of school location, England 2011/12

Table 8.3 Pupil absence in schools by IDACI decile of pupil residence, England 2011/12

Table 8.4 Pupil absence in schools by degree of rurality of pupil residence, England 2011/12

Table 8.5 Pupil absence in schools by local authority district of pupil residence, England 2011/12

Table 8.6 Pupil absence in schools by IDACI decile and degree of rurality of pupil residence, England 2011/12

Additional analyses showing absence in pupil referral units will be made available in May 2013 at <http://www.education.gov.uk/researchandstatistics/statistics/a00221993>. The exact date and format will be pre-announced four weeks before publication.

ADDITIONAL INFORMATION

Underlying data (including some summary school level analyses) will be published at <http://www.education.gov.uk/researchandstatistics/statistics/a00221993> on 19 March 2013 in the 'Publication's Underlying Data' section.

RELATED PUBLICATIONS

DfE: Pupil Absence in Schools in England, Including Pupil Characteristics: 2010/11
<http://www.education.gov.uk/researchandstatistics/statistics/a00206150/>

DfE: Pupil Absence in schools in England: Autumn Term 2011 and Spring Term 2012
<http://www.education.gov.uk/researchandstatistics/statistics/a00214982/>

DfE: Pupil Absence in Schools in England - Autumn Term 2011
<http://www.education.gov.uk/researchandstatistics/statistics/a00208735/>

DfE: Pupil Absence in Schools in England, Spring Term 2012
<http://www.education.gov.uk/researchandstatistics/statistics/a00212488/>

DfE: Outcomes for Children Looked After by Local Authorities in England, as at 31 March 2012 <http://www.education.gov.uk/researchandstatistics/statistics/a00217266/>. The absence data for the 2011/12 school year will be published soon.

NATIONAL STATISTICS PUBLICATION

The United Kingdom Statistics Authority has designated these statistics as National Statistics, in accordance with the Statistics and Registration Service Act 2007 and signifying compliance with the Code of Practice for Official Statistics.

Designation can be broadly interpreted to mean that the statistics:

- meet identified user needs;
- are well explained and readily accessible;
- are produced according to sound methods, and
- are managed impartially and objectively in the public interest.

Once statistics have been designated as National Statistics it is a statutory requirement that the Code of Practice shall continue to be observed.

The Department has a set of statistical policies in line with the *Code of Practice for Official Statistics*, these are published here: <http://www.education.gov.uk/a00196924/national-statistics>

CONFIDENTIALITY

The *Code of Practice for Official Statistics* requires that reasonable steps should be taken to ensure that all published or disseminated statistics produced by the Department for Education protect confidentiality. Enrolment numbers at national and regional levels have been rounded to the nearest 5. Enrolment numbers of 1 or 2 have been suppressed, being replaced in the tables by an 'x'. Where any number is shown as zero (0), the original figure was also zero. Where the numerator or denominator of any percentage calculated on enrolment numbers is less than 3, this has been replaced by an 'x'. This suppression is consistent with the Departmental statistical policy which can be found at

<http://media.education.gov.uk/assets/files/policy%20statement%20on%20confidentiality.pdf>

REVISIONS

There are no planned revisions to this Statistical First Release, however, if at a later date we need to make a revision, this will comply with the departmental revisions policy which is published at <http://media.education.gov.uk/assets/files/policy%20statement%20on%20revisions.pdf>

TECHNICAL NOTES

Definitions

1. The measures of absence used here are rates of overall, authorised and unauthorised absence and persistent absentees. Some cases of unauthorised absence may change to authorised absence at a later stage (once an explanation has been reported to the school). However, if this is supplied to the school after the School Census database has closed, the absence will still be recorded as “no reason yet”. In this respect, using overall absence rates and the rate of persistent absentees gives more suitable data for performance reporting.
2. The Department has published ‘Advice on School Attendance’, which explains how schools should apply the Education (Pupil Registration) (England) Regulations 2006 and subsequent amendments and the use of the national codes to record pupil attendance and absence in schools. This advice is available at <http://www.education.gov.uk/schools/pupilsupport/behaviour/attendance/a00216341/school-attendance>.
3. In law, parents of children of compulsory school age (aged 5 to 15 at the start of the school year) are required to ensure that they receive a suitable education by regular attendance at school or otherwise. Failure to comply with this statutory duty can lead to prosecution. Local authorities are responsible in law for making sure that pupils attend school.
4. Schools are required to take attendance registers twice a day: once at the beginning of the morning session and once during the afternoon session. In their register, schools are required to distinguish whether pupils are present, engaged in an approved educational activity or are absent. Where a day pupil of compulsory school age is absent, schools have to indicate in their register whether the absence is authorised by the school or unauthorised.
5. Authorised absence is absence with permission from a teacher or other authorised representative of the school. This includes instances of absence for which a satisfactory explanation has been provided (for example, illness).
6. Unauthorised absence is absence without permission from a teacher or other authorised representative of the school. This includes all unexplained or unjustified absences. Arriving late for school, after the register has closed, is recorded as unauthorised absence.
7. The Department’s key measure of persistent absence relates to the school year. A pupil is classified as a persistent absentee for the school year if missing around 15 per cent or more of possible sessions. For the school year, this is defined in terms of those with around 15 per cent or more overall absence (missing 46 or more sessions). See table below.

	Persistent absence threshold (around 15 per cent of possible sessions)
Autumn term	22 sessions
Spring term	16 sessions
Autumn and Spring terms	38 sessions
Full year	46 sessions

Calculation of absence rates

8. The methodology used to calculate absence rates is shown below. Further calculations, including absence rates by reason, can be found in the metadata specification document in the Underlying Data section of this release at: <http://www.education.gov.uk/researchandstatistics/statistics/a00221993>

Percentage of sessions missed due to overall absence:

$$\frac{\textit{Total overall absence sessions}}{\textit{Total Sessions Possible}} \times 100$$

Percentage of sessions missed due to authorised absence:

$$\frac{\textit{Total authorised absence sessions}}{\textit{Total Sessions Possible}} \times 100$$

Percentage of sessions missed due to unauthorised absence:

$$\frac{\textit{Total unauthorised absence sessions}}{\textit{Total Sessions Possible}} \times 100$$

Percentage of pupil enrolments that are persistent absentees:

$$\frac{\textit{Number of enrolments classed as persistent absentees}}{\textit{Number of enrolments}} \times 100$$

Percentage of sessions missed by persistent absentees due to overall absence:

$$\frac{\textit{Overall absence sessions for persistent absentees}}{\textit{Sessions possible for persistent absentees}} \times 100$$

Percentage of sessions missed by persistent absentees due to authorised absence:

$$\frac{\textit{Authorised absence sessions for persistent absentees}}{\textit{Sessions possible for persistent absentees}} \times 100$$

Percentage of sessions missed by persistent absentees due to unauthorised absence:

$$\frac{\textit{Unauthorised absence sessions for persistent absentees}}{\textit{Sessions possible for persistent absentees}} \times 100$$

Percentage of overall absence for which persistent absentees are responsible:

$$\frac{\textit{Overall absence sessions for persistent absentees}}{\textit{Total overall absence sessions}} \times 100$$

Percentage of authorised absence for which persistent absentees are responsible:

$$\frac{\textit{Authorised absence sessions for persistent absentees}}{\textit{Total authorised absence sessions}} \times 100$$

Percentage of unauthorised absence for which persistent absentees are responsible:

$$\frac{\textit{Unauthorised absence sessions for persistent absentees}}{\textit{Total unauthorised absence sessions}} \times 100$$

Presentation

9. The tables include city technology colleges, secondary sponsor-led and converter academies and secondary free schools along with local authority maintained schools in a category labelled "state-funded secondary", and local authority maintained primary schools, primary sponsor-led and converter academies and primary free schools in a category labelled "state-funded primary" and local authority maintained special schools, converter academies and non-maintained special schools in a category labelled 'special'.

Data collection

10. In 2006 the School Census started to collect pupil level absence data on a termly basis (spring, summer and autumn collections) from maintained secondary schools, city technology colleges and academies relating to absence during the 2005/06 school year. For the 2006/07 school year the scope of collection of the School Census was extended to include maintained primary schools and special schools. Special schools provide annual absence data in the autumn School Census.
11. Reason for absence was collected for the first time for the autumn term 2006. Schools are able to provide absence data using a reason code or by using total figures for the number of sessions missed due to authorised or unauthorised absence. A small proportion of schools have provided both a breakdown of absence by reason and totals. In addition, some schools do not have the required software to provide absence data by reason, and therefore are only able to provide overall totals. To derive absence rates, the sum of absence by reason has been used unless this is missing or is less than the total provided, in which case overall totals have been used.

12. Data are collected a term in arrears, meaning that where a school closes, data are not collected for the last term the school was open. School closures tend to take place in the summer, in which case data for the summer term (first half of) will not be collected. Year on year comparisons of local authority data may be affected due to schools converting to academies.
13. Guidance on the School Census, including absence, is available on the DfE statistics website: <http://www.education.gov.uk/researchandstatistics/stats/schoolcensus/b00208370/sc2012>.

The technical specification for School Census can be found at:

<http://media.education.gov.uk/assets/files/pdf/s/school%20census%202012%20business%20and%20technical%20specification.pdf>. This explains what data are collected and what validation are in place.

Data coverage and quality

14. Schools have provided, via the School Census, individual level attendance data relating to the autumn term 2011, spring term 2012 and first half of summer term 2012 for pupils aged 5 to 15 (at the start of the school year), who are non-boarders at the time of the census. In each term, the School Census has collected the number of possible sessions of attendance; and the number of sessions missed, broken down by reason for absence, and overall totals of sessions missed due to authorised and unauthorised absence.
15. The School Census collects information for a pupil's attendance in the term prior to the census. For example, the spring School Census collects information on absence during the previous autumn term. Absence data for the 2011/12 year have been derived by linking pupil records collected in the spring 2012 School Census, summer 2012 School Census and autumn 2012 School Census to derive overall annual totals for the number of possible sessions; the number of sessions missed by reason for absence and the number of sessions missed due to authorised and unauthorised absence for each enrolment. Derived annual absence totals have been linked to a pupil's characteristics data at the time of the absence. Where characteristics data are missing, information collected in the following census have been used, except for ethnicity which is only collected in the spring School Census.
16. Information relating to pupil absence counts the number of pupil enrolments rather than the number of pupils. Where a pupil has moved school during the year, they will be counted more than once as they have recorded attendance data in more than one school. Pupil absence is recorded for the period a pupil is enrolled at a school. Where a pupil has a dual registration their absence may be returned from both schools, if both schools return absence data via the School Census.
17. For a pupil enrolment, if the number of possible sessions in a term is zero/missing or is less than the total number of sessions missed due to authorised and unauthorised absence, or if the total number of possible sessions exceeds the limit for the term, then the absence variables have been set to zero for that term only, and that term's information has been discounted from this release. If the total number of possible sessions for each and every term equals zero, then the enrolment has not been included.

18. From September 2011 the way schools record attendance and absence for dually registered pupils changed. Attendance code D (Dual registered at another educational establishment) is no longer counted in the School Census as an attendance. Each school now only records the attendance and absence for the sessions a pupil is required to attend at their school, previously each school recorded all absence. This change affects a relatively small number of pupils and has only a marginal effect on absence rates.
19. Following changes to attendance regulations and procedures, from 2012 the School Census collects attendance information about pupils unable to attend school due to exceptional circumstances using attendance code Y. Schools use code Y to record the sessions where a pupil is unable to attend because:
- The school site, or part of it, is closed due to an unavoidable cause;
 - The transport provided by the school or a local authority is not available, and their home is not within walking distance; or
 - A local or national emergency has resulted in widespread disruption to travel which has prevented the pupil from attending school.

These sessions, however, are not counted as possible attendance and account for a relatively small proportion of sessions.

20. The information provided in this release is for 2.5 terms of the 2011/12 academic year. Data relating to the summer term is only required up until the Friday before the Spring Bank Holiday at the beginning of June, rather than the full term. Seven primary and secondary sponsor-led academies and one voluntary aided secondary school opened on 1 June 2012. As these schools were only open for one day during the reporting period, the absence data they returned has been removed from this analysis. Thirty eight primary and secondary sponsor-led academies returned summer term data for their predecessor school, this has been removed from the analysis. Four special sponsor-led academies opened in September 2012 and returned data for their predecessor school, this absence data has been removed from this analysis. Nine schools reporting only one or two pupil enrolments have also been excluded from this analysis to prevent disclosure of information.
21. Also, by the end of July 2011 the Isle of Wight local authority completed restructuring of their education system, phasing out their middle schools and moving to a two-tier system. Care should be taken when making comparisons with previous year's data. All middle schools on the island, other than Christ The King College, closed for pupils as of 21 July 2011. Instead of the four years at middle school, children have been given 2 extra years in primary school and then move straight onto secondary school. Children already in middle school transferred straight to the new secondary schools at the start of the next academic year, whether they are in year 6, 7 or 8.
22. In autumn term 2011 there was a very substantial decrease in absence levels which we believe was due to a combination of factors, including:
- A large decrease in absence rates for illness reasons – illness being by far the most common reason for pupil absence. Figures from the Health Protection Agency suggest that lower levels of flu-like illness may be a factor;
 - Eid fell out of term time and explains some of the relatively large fall in absence for

religious observance;

- There was also a relatively large decrease in absence for agreed family holidays and for “other authorised” reasons. This may reflect a growing reluctance for absence to be approved.

23. The information in this release is based on data returned by schools as part of the School Census. It does not include data which has been submitted by local authorities or schools outside of the School Census data collection.
24. The data presented here are based on the attendance registers which are taken twice a day: once at the beginning of the morning session and once during the afternoon session. It therefore does not include “internal unauthorised absence”. This is defined as unauthorised absence by pupils between the school's twice daily registrations, i.e. a pupil is effectively recorded as attending during morning or afternoon registration but is physically not present at another part of the relevant session. The Department's current data systems are limited insofar as they only record and measure the registrations, not any subsequent absence.
25. The data contained in this release relates only to those pupils on the roll of a state-funded primary, state-funded secondary or special school. It does not include those children who are not registered at a school.

Local Area Statistics

26. IDACI is provided by the Department for Communities and Local Government (CLG). It is based on Super Output Areas (SOAs) in England. Each SOA is given a rank between 1 and 32,482 where 1 is the most deprived SOA.
27. IDACI is a subset of the Income Deprivation Domain of the Index of Multiple Deprivation 2010. Each SOA is given a score showing the percentage of children aged under 16 that live in families that are income deprived, i.e. they are in receipt of certain benefits and their equivalised income is below 60% of median before housing costs. Further information about IDACI can be found on the CLG website at:
<http://www.communities.gov.uk/publications/corporate/statistics/indices2010?view=Standard>.
28. IDACI bands for 2011/12 and 2010/11 are based on 2010 IDACI scores. IDACI bands for 2007/08, 2008/09 and 2009/10 are based on 2007 IDACI scores. Care should be taken when comparing IDACI tables based on different IDACI scores.

Urban / Rural Areas

29. The Rural and Urban Area Classification is a product of a joint project to produce a single and consistent classification of urban and rural areas. The project was sponsored by a number of government departments. The rural and urban definitions classify output areas, wards and super output areas by aggregating the underlying hectare grid squares classifications for the measures of settlement size and sparsity. Up to 8 classes of output areas could be distinguished; four settlement types (urban, town and fringe, village, hamlet and isolated dwelling) in either a sparse or less sparse regional setting. Further information about the Rural and Urban Area Classification 2004 can be found on the National Statistics website at:

<http://www.ons.gov.uk/ons/guide-method/geography/products/area-classifications/rural-urban-definition-and-la/index.html>

Symbols used

30. For national tables (tables 1.1 to 6.1), pupil or enrolment numbers have been rounded to the nearest 5. Pupil or enrolment numbers of 1 or 2 have been suppressed, being replaced in the table by an 'x'. The corresponding absence rates have also been suppressed. Where any number is shown as zero (0), the original figure was also zero. Where the numerator or denominator of any percentage calculated on enrolment numbers is 1 or 2, this has been replaced by an 'x'.
31. For the local authority table (table 7.1), national and region enrolment numbers have been rounded to the nearest 5. Enrolment numbers of 1 or 2 have been suppressed, being replaced in the table by an 'x'. The corresponding absence rates have also been suppressed. Where any number is shown as zero (0), the original figure was also zero. Where the numerator or denominator of any percentage calculated on enrolment numbers is 1 or 2, this has been replaced by an 'x'.
32. For tables 8.1 to 8.6 an 'x' indicates that a figure has been suppressed due to small numbers. Values of 1 to 2 inclusive, or percentages of persistent absentees based on 1 or 2 pupils who were (or were not) persistent absentees are suppressed. Some additional figures have also been suppressed to prevent the possibility of a suppressed figure being revealed.
33. All percentages have been rounded to one decimal place.
34. The following symbols have been used within this publication:
 - 0 – zero
 - x – small number suppressed to preserve confidentiality (see Technical Notes 30 to 32)
 - .
 - .. – not available

ENQUIRIES

35. Enquiries (non-media) about information contained in this document should be addressed to Schools Data Unit, Room 1F Area H, Mowden Hall, Staindrop Road, Darlington, Co Durham, DL3 9BG or e-mail schools.statistics@education.gsi.gov.uk
36. Media enquiries about information contained in this Statistical First Release should be made to the Department's Press Office at DFE, Sanctuary Buildings, Great Smith Street, London, SW1P 3BT or telephone 020 7783 8300

Table 1.1
STATE-FUNDED PRIMARY, SECONDARY AND SPECIAL SCHOOLS (1)(2)(3)(4):
PUPIL ABSENCE BY TYPE OF SCHOOL
 2007/08 to 2011/12
 England

	2007/08	2008/09	2009/10	2010/11	2011/12
Total					
Number of day pupils of compulsory school age (5)	6,244,890	6,182,245	6,163,875	6,160,830	6,184,740
Number of pupil enrolments (6)	6,478,155	6,408,545	6,387,685	6,382,835	6,411,085
Percentage of sessions missed due to (7):					
Overall absence	6.3	6.3	6.0	5.8	5.1
Authorised absence	5.3	5.2	5.0	4.7	4.1
Unauthorised absence	1.0	1.1	1.0	1.1	1.0
State-funded primary schools (1)(2)					
Number of day pupils of compulsory school age (5)	3,263,380	3,231,375	3,232,455	3,255,995	3,307,100
Number of pupil enrolments (6)	3,412,005	3,375,830	3,374,040	3,392,330	3,453,445
Percentage of sessions missed due to (7):					
Overall absence	5.3	5.3	5.2	5.0	4.4
Authorised absence	4.7	4.7	4.5	4.3	3.7
Unauthorised absence	0.6	0.6	0.7	0.7	0.7
State-funded secondary schools (1)(3)					
Number of day pupils of compulsory school age (5)	2,910,515	2,879,555	2,859,695	2,832,395	2,803,860
Number of pupil enrolments (6)	2,988,750	2,954,325	2,934,805	2,911,100	2,878,120
Percentage of sessions missed due to (7):					
Overall absence	7.4	7.2	6.9	6.5	5.9
Authorised absence	5.9	5.8	5.4	5.1	4.6
Unauthorised absence	1.5	1.5	1.4	1.4	1.3
Special schools (4)					
Number of day pupils of compulsory school age (5)	70,995	71,315	71,725	72,435	73,780
Number of pupil enrolments (6)	77,400	78,385	78,840	79,405	79,520
Percentage of sessions missed due to (7):					
Overall absence	10.6	10.7	10.3	10.0	9.6
Authorised absence	8.4	8.6	8.3	8.0	7.6
Unauthorised absence	2.2	2.1	2.0	2.0	2.0

Source: School Census

- (1) Includes middle schools as deemed.
 (2) Includes primary academies, including free schools.
 (3) Includes city technology colleges and secondary academies, including free schools.
 (4) Includes maintained special schools, non-maintained special schools and special academies. Excludes general hospital schools, independent special schools and independent schools approved for SEN pupils.
 (5) Pupil numbers are as at January each year. Includes pupils aged 5 to 15 with sole and dual (main) registration. Excludes boarders and those pupils for whom boarding information was not supplied.
 (6) Number of pupil enrolments in schools from start of the school year up until the end of the fifth half term. Includes pupils on the school roll for at least one session who are aged between 5 and 15, excluding boarders. Some pupils may be counted more than once (if they moved schools during the school year or are registered at more than one school). See Technical Notes 14 to 16.
 (7) The number of sessions missed due to overall/authorised/unauthorised absence expressed as a percentage of the total number of possible sessions. See Technical Note 4.

Totals may not appear to equal the sum of component parts because numbers have been rounded to the nearest 5.

Table 1.2
STATE-FUNDED PRIMARY, SECONDARY AND SPECIAL SCHOOLS (1)(2)(3)(4):
PERSISTENT ABSENTEES (5)
 2007/08 to 2011/12
 England

	2007/08	2008/09	2009/10	2010/11	2011/12
Total					
Number of pupil enrolments that are persistent absentees (5)(6)	499,665	472,865	433,130	392,305	333,850
Total number of pupil enrolments (6)	6,478,155	6,408,545	6,387,685	6,382,835	6,411,085
Percentage of pupil enrolments that are persistent absentees	7.7	7.4	6.8	6.1	5.2
Percentage of sessions missed by persistent absentees due to (7):					
Overall absence	25.9	25.2	24.7	25.0	24.7
Authorised absence	17.8	17.0	16.3	16.0	15.5
Unauthorised absence	8.1	8.2	8.3	9.0	9.1
Percentage of absence for which persistent absentees are responsible (8):					
Overall absence	31.9	29.8	27.9	26.6	25.1
Authorised absence	26.2	24.3	22.3	20.8	19.5
Unauthorised absence	61.7	57.5	54.5	52.1	48.9
State-funded primary schools (1)(2)					
Number of pupil enrolments that are persistent absentees (5)(6)	161,350	156,710	148,410	133,445	108,385
Total number of pupil enrolments (6)	3,412,005	3,375,830	3,374,040	3,392,330	3,453,445
Percentage of pupil enrolments that are persistent absentees	4.7	4.6	4.4	3.9	3.1
Percentage of sessions missed by persistent absentees due to (7):					
Overall absence	22.0	21.6	21.2	21.5	21.0
Authorised absence	17.1	16.5	15.9	15.6	14.9
Unauthorised absence	4.9	5.1	5.3	5.9	6.1
Percentage of absence for which persistent absentees are responsible (8):					
Overall absence	20.0	19.1	18.1	16.9	15.1
Authorised absence	17.4	16.6	15.6	14.3	12.7
Unauthorised absence	41.2	37.4	35.0	32.8	28.8
State-funded secondary schools (1)(3)					
Number of pupil enrolments that are persistent absentees (5)(6)	324,905	302,005	271,225	245,590	212,495
Total number of pupil enrolments (6)	2,988,750	2,954,325	2,934,805	2,911,100	2,878,120
Percentage of pupil enrolments that are persistent absentees	10.9	10.2	9.2	8.4	7.4
Percentage of sessions missed by persistent absentees due to (7):					
Overall absence	27.5	26.8	26.2	26.4	26.1
Authorised absence	17.9	17.0	16.2	15.8	15.4
Unauthorised absence	9.6	9.7	10.0	10.7	10.7
Percentage of absence for which persistent absentees are responsible (8):					
Overall absence	40.6	37.7	35.2	34.0	32.6
Authorised absence	33.1	30.2	27.6	26.1	24.8
Unauthorised absence	69.8	66.4	63.9	61.9	59.8
Special schools (4)					
Number of pupil enrolments that are persistent absentees (5)(6)	13,410	14,150	13,490	13,270	12,970
Total number of pupil enrolments (6)	77,400	78,385	78,840	79,405	79,520
Percentage of pupil enrolments that are persistent absentees	17.3	18.0	17.1	16.7	16.3
Percentage of sessions missed by persistent absentees due to (7):					
Overall absence	33.8	33.0	24.7	32.0	31.8
Authorised absence	24.1	23.7	16.3	22.6	22.4
Unauthorised absence	9.7	9.3	8.3	9.5	9.4
Percentage of absence for which persistent absentees are responsible (8):					
Overall absence	59.4	58.7	27.9	55.8	56.4
Authorised absence	53.3	52.6	22.3	49.2	50.1
Unauthorised absence	83.4	82.9	54.5	81.6	81.3

Source: School Census

- (1) Includes middle schools as deemed.
 (2) Includes primary academies, including free schools.
 (3) Includes city technology colleges and secondary academies, including free schools.
 (4) Includes maintained special schools, non-maintained special schools and special academies. Excludes general hospital schools, independent special schools and independent schools.
 (5) Persistent Absentees are defined as having an overall absence rate of around 15 per cent or more. This equates to 46 or more sessions of absence (authorised and unauthorised) during the year.
 (6) Number of pupil enrolments in schools from start of the school year to the end of the fifth half term. Includes pupils on the school roll for at least one session who are aged between 5 and 15, excluding boarders. Some pupils may be counted more than once (if they moved schools during the school year or are registered in more than one school). See Technical Notes 14 to 16.
 (7) The number of sessions missed due to overall/authorised/unauthorised absence expressed as a percentage of the total number of possible sessions. See Technical Note 4.
 (8) The total number of sessions missed due to overall/authorised/unauthorised absence by persistent absentees expressed as a percentage of the total number of sessions missed due to overall/authorised/unauthorised absence by all pupil enrolments.

Totals may not appear to equal the sum of the component parts because numbers have been rounded to the nearest 5.

Table 2.1
STATE-FUNDED PRIMARY, SECONDARY AND SPECIAL SCHOOLS (1)(2)(3)(4):
ABSENCE BY REASON AND GENDER
2011/12
England

	State-funded primary schools (1)(2)			State-funded secondary schools (1)(3)			Special schools (4)			Total		
	Boys	Girls	Total	Boys	Girls	Total	Boys	Girls	Total	Boys	Girls	Total
DISTRIBUTION OF REASONS FOR ABSENCE												
Total Overall Absence	100.0	100.0	100.0	100.0	100.0	100.0	100.0	100.0	100.0	100.0	100.0	100.0
Percentage of absent sessions due to (5):												
Illness (NOT medical or dental appointments)	61.7	62.5	62.1	54.5	56.3	55.4	43.2	53.6	46.0	57.5	59.1	58.3
Medical/dental appointments	5.9	5.5	5.7	6.5	7.4	7.0	9.8	14.4	11.1	6.3	6.6	6.5
Religious observance	0.5	0.5	0.5	0.3	0.3	0.3	0.2	0.3	0.2	0.4	0.4	0.4
Study leave	0.0	0.0	0.0	2.9	2.7	2.8	0.6	0.2	0.5	1.5	1.5	1.5
Traveller absence	0.4	0.4	0.4	0.1	0.1	0.1	0.2	0.0	0.2	0.3	0.3	0.3
Agreed family holiday	10.3	10.8	10.5	3.2	3.2	3.2	5.1	6.0	5.3	6.6	6.7	6.6
Agreed extended family holiday	0.2	0.2	0.2	0.0	0.0	0.0	0.2	0.4	0.2	0.1	0.1	0.1
Excluded, no alternative provision	0.7	0.1	0.4	3.4	1.2	2.3	3.2	0.8	2.5	2.1	0.7	1.4
Other authorised circumstances	5.0	4.7	4.9	6.7	6.4	6.5	13.9	12.2	13.5	6.1	5.7	5.9
Total Authorised Absence	84.8	84.8	84.8	77.7	77.6	77.6	76.4	87.8	79.5	81.0	81.0	81.0
Percentage of absent sessions due to (5):												
Family holiday not agreed	4.2	4.4	4.3	2.5	2.6	2.5	0.7	0.8	0.8	3.3	3.4	3.3
Arrived late	1.3	1.3	1.3	1.2	1.2	1.2	0.7	0.7	0.7	1.3	1.3	1.3
Other unauthorised circumstances	8.0	7.8	7.9	15.7	16.0	15.8	21.2	9.9	18.1	12.3	12.2	12.2
No reason yet	1.7	1.7	1.7	2.8	2.7	2.8	1.0	0.8	0.9	2.2	2.2	2.2
Total Unauthorised Absence	15.2	15.2	15.2	22.3	22.4	22.4	23.6	12.2	20.5	19.0	19.0	19.0
ABSENCE RATES BY REASON												
Total Overall Absence	4.4	4.3	4.4	5.7	6.0	5.9	9.7	9.4	9.6	5.1	5.1	5.1
Percentage of possible sessions missed due to (6):												
Illness (NOT medical or dental appointments)	2.7	2.7	2.7	3.1	3.4	3.2	4.1	4.9	4.3	2.9	3.0	3.0
Medical/dental appointments	0.3	0.2	0.3	0.4	0.4	0.4	0.9	1.3	1.0	0.3	0.3	0.3
Religious observance	0.0	0.0	0.0	0.0	0.0	0.0	0.0	0.0	0.0	0.0	0.0	0.0
Study leave	0.0	0.0	0.0	0.2	0.2	0.2	0.1	0.0	0.0	0.1	0.1	0.1
Traveller absence	0.0	0.0	0.0	0.0	0.0	0.0	0.0	0.0	0.0	0.0	0.0	0.0
Agreed family holiday	0.5	0.5	0.5	0.2	0.2	0.2	0.5	0.5	0.5	0.3	0.3	0.3
Agreed extended family holiday	0.0	0.0	0.0	0.0	0.0	0.0	0.0	0.0	0.0	0.0	0.0	0.0
Excluded, no alternative provision	0.0	0.0	0.0	0.2	0.1	0.1	0.3	0.1	0.2	0.1	0.0	0.1
Other authorised circumstances	0.2	0.2	0.2	0.4	0.4	0.4	1.3	1.1	1.3	0.3	0.3	0.3
Unclassified (7)	0.0	0.0	0.0	0.0	0.0	0.0	0.1	0.1	0.1	0.0	0.0	0.0
Total Authorised Absence	3.7	3.7	3.7	4.4	4.7	4.6	7.4	8.2	7.6	4.1	4.2	4.1
Percentage of possible sessions missed due to (6):												
Family holiday not agreed	0.2	0.2	0.2	0.1	0.2	0.1	0.1	0.1	0.1	0.2	0.2	0.2
Arrived late	0.1	0.1	0.1	0.1	0.1	0.1	0.1	0.1	0.1	0.1	0.1	0.1
Other unauthorised circumstances	0.3	0.3	0.3	0.9	1.0	0.9	2.0	0.9	1.7	0.6	0.6	0.6
No reason yet	0.1	0.1	0.1	0.2	0.2	0.2	0.1	0.1	0.1	0.1	0.1	0.1
Unclassified (7)	0.0	0.0	0.0	0.0	0.0	0.0	0.0	0.0	0.0	0.0	0.0	0.0
Total Unauthorised Absence	0.7	0.7	0.7	1.3	1.3	1.3	2.3	1.1	2.0	1.0	1.0	1.0

Source: School Census

- (1) Includes middle schools as deemed.
(2) Includes primary academies, including free schools.
(3) Includes city technology colleges and secondary academies, including free schools.
(4) Includes maintained special schools, non-maintained special schools and special academies. Excludes general hospital schools, independent special schools and independent schools approved for SEN pupils.
(5) The number of sessions absent by reason expressed as a percentage of the total number of sessions absent as reported by reason (not overall totals). See Technical Notes 4, 11 and 14.
(6) The number of sessions absent by reason expressed as a percentage of the total number of sessions possible. See Technical Notes 4, 11 and 14.
(7) Includes absence returned as either authorised or unauthorised totals but not broken down by reason. See Technical Note 11.

Table 2.2

STATE-FUNDED PRIMARY, SECONDARY AND SPECIAL SCHOOLS (1)(2)(3)(4):**ABSENCE BY REASON FOR PERSISTENT ABSENTEES (5)**

2011/12

England

	Persistent Absentees (5)				Other pupils			
	State-funded primary schools (1)(2)	State-funded secondary schools (1)(3)	Special schools (4)	Total	State-funded primary schools (1)(2)	State-funded secondary schools (1)(3)	Special schools (4)	Total
<u>DISTRIBUTION OF REASONS FOR ABSENCE</u>								
Total Overall Absence	100.0	100.0	100.0	100.0	100.0	100.0	100.0	100.0
Percentage of absent sessions due to (6):								
Illness (NOT medical or dental appointments)	50.9	38.8	38.9	42.2	64.1	63.4	55.1	63.7
Medical/dental appointments	4.4	4.4	7.1	4.5	6.0	8.2	16.2	7.1
Religious observance	0.2	0.1	0.1	0.1	0.6	0.4	0.4	0.5
Study leave	0.0	2.3	0.7	1.6	0.0	3.1	0.3	1.4
Traveller absence	2.5	0.3	0.3	0.9	0.1	0.0	0.0	0.0
Agreed family holiday	4.3	0.9	2.6	1.9	11.7	4.3	8.8	8.2
Agreed extended family holiday	0.7	0.1	0.3	0.2	0.2	0.0	0.1	0.1
Excluded, no alternative provision	1.0	3.8	2.9	3.0	0.3	1.6	2.1	0.9
Other authorised circumstances	7.0	8.4	17.5	8.4	4.5	5.6	8.3	5.1
Total Authorised Absence	71.1	59.1	70.4	63.0	87.3	86.7	91.2	87.0
Percentage of absent sessions due to (6):								
Family holiday not agreed	4.7	1.6	0.7	2.4	4.2	3.0	0.8	3.6
Arrived late	2.5	2.0	0.8	2.1	1.1	0.8	0.7	1.0
Other unauthorised circumstances	18.9	33.6	27.1	29.2	5.9	7.2	6.5	6.5
No reason yet	2.7	3.7	1.0	3.3	1.5	2.3	0.8	1.9
Total Unauthorised Absence	28.9	40.9	29.6	37.0	12.7	13.3	8.8	13.0
<u>ABSENCE RATES BY REASON</u>								
Total Overall Absence	21.0	26.1	31.8	24.7	3.8	4.3	5.0	4.0
Percentage of possible sessions missed due to (7):								
Illness (NOT medical or dental appointments)	10.7	10.1	12.2	10.4	2.5	2.7	2.7	2.6
Medical/dental appointments	0.9	1.1	2.2	1.1	0.2	0.3	0.8	0.3
Religious observance	0.0	0.0	0.0	0.0	0.0	0.0	0.0	0.0
Study leave	0.0	0.6	0.2	0.4	0.0	0.1	0.0	0.1
Traveller absence	0.5	0.1	0.1	0.2	0.0	0.0	0.0	0.0
Agreed family holiday	0.9	0.2	0.8	0.5	0.4	0.2	0.4	0.3
Agreed extended family holiday	0.1	0.0	0.1	0.1	0.0	0.0	0.0	0.0
Excluded, no alternative provision	0.2	1.0	0.9	0.7	0.0	0.1	0.1	0.0
Other authorised circumstances	1.5	2.2	5.5	2.1	0.2	0.2	0.4	0.2
Unclassified (8)	0.0	0.0	0.4	0.0	0.0	0.0	0.1	0.0
Total Authorised Absence	14.9	15.4	22.4	15.5	3.3	3.7	4.6	3.5
Percentage of possible sessions missed due to (7):								
Family holiday not agreed	1.0	0.4	0.2	0.6	0.2	0.1	0.0	0.1
Arrived late	0.5	0.5	0.2	0.5	0.0	0.0	0.0	0.0
Other unauthorised circumstances	4.0	8.8	8.5	7.2	0.2	0.3	0.3	0.3
No reason yet	0.6	1.0	0.3	0.8	0.1	0.1	0.0	0.1
Unclassified (8)	0.0	0.0	0.1	0.0	0.0	0.0	0.0	0.0
Total Unauthorised Absence	6.1	10.7	9.4	9.1	0.5	0.6	0.4	0.5

Source: School Census

(1) Includes middle schools as deemed.

(2) Includes primary academies, including free schools.

(3) Includes city technology colleges and secondary academies, including free schools.

(4) Includes maintained special schools, non-maintained special schools and special academies. Excludes general hospital schools, independent special schools and independent schools approved for SEN pupils.

(5) Persistent Absentees are defined as having an overall absence rate of around **15 per cent** or more. This equates to 46 or more sessions of absence (authorised and unauthorised) during the year.

(6) The number of sessions absent by reason expressed as a percentage of the total number of sessions absent as reported by reason (not overall totals). See Technical Notes 4, 11 and 14.

(7) The number of sessions absent by reason expressed as a percentage of the total number of sessions possible. See Technical Notes 4, 11 and 14.

(8) Includes absence returned as either authorised or unauthorised totals but not broken down by reason. See Technical Note 11.

Table 3.1

STATE-FUNDED PRIMARY, SECONDARY AND SPECIAL SCHOOLS (1)(2)(3)(4):**DISTRIBUTION OF ENROLMENTS BY LENGTH OF OVERALL ABSENCE**

2011/12

England

	State-funded primary schools (1)(2)			State-funded secondary schools (1)(3)			Special schools (4)			Total		
	Pupil enrolments in schools during 2011/12 (5)		Percentage of overall absence (6)	Pupil enrolments in schools during 2011/12 (5)		Percentage of overall absence (6)	Pupil enrolments in schools during 2011/12 (5)		Percentage of overall absence (6)	Pupil enrolments in schools during 2011/12 (5)		Percentage of overall absence (6)
	Number	Percentage		Number	Percentage		Number	Percentage		Number	Percentage	
Number of days overall absence:												
No absence	331,850	9.6	0.0	241,635	8.4	0.0	6,430	8.1	0.0	579,915	9.0	0.0
0.5 to 5 days	1,559,125	45.1	18.0	1,133,405	39.4	11.6	24,630	31.0	6.1	2,717,165	42.4	14.4
5.5 to 10 days	838,540	24.3	27.6	668,345	23.2	19.6	16,875	21.2	11.6	1,523,760	23.8	23.1
10.5 to 15 days	393,925	11.4	21.5	365,875	12.7	17.8	10,185	12.8	11.6	769,980	12.0	19.4
15.5 to 20 days	175,595	5.1	13.4	196,315	6.8	13.3	6,275	7.9	10.0	378,185	5.9	13.3
20.5 to 25 days	78,090	2.3	7.7	102,790	3.6	9.0	3,965	5.0	8.1	184,845	2.9	8.4
more than 25 days	76,315	2.2	11.8	169,760	5.9	28.6	11,165	14.0	52.5	257,235	4.0	21.4
Total	3,453,445	100.0	100.0	2,878,120	100.0	100.0	79,520	100.0	100.0	6,411,085	100.0	100.0

Source: School Census

(1) Includes middle schools as deemed.

(2) Includes primary academies, including free schools.

(3) Includes city technology colleges and secondary academies, including free schools.

(4) Includes maintained special schools, non-maintained special schools and special academies. Excludes general hospital schools, independent special schools and independent schools approved for SEN pupils.

(5) Number of pupil enrolments in schools from start of the school year up until 1 June 2012. Includes pupils on the school roll for at least one session who are aged between 5 and 15, excluding boarders. Some pupils may be counted more than once (if they moved schools during the school year or are registered in more than one school). See Technical Notes 14 to 16.

(6) The number of sessions missed due to overall absence in each band expressed as a percentage of the total number of sessions missed due to overall absence. See Technical Note 4.

Totals may not appear to equal the sum of the component parts because numbers have been rounded to the nearest 5.

Table 3.2

STATE-FUNDED PRIMARY, SECONDARY AND SPECIAL SCHOOLS (1)(2)(3)(4):**PERCENTAGE OF ENROLMENTS BY THEIR OVERALL ABSENCE RATES**

2011/12

England

	State-funded primary schools (1)(2)			State-funded secondary schools (1)(3)			Special schools (4)			Total		
	Pupil enrolments in schools during 2011/12 (5)		Percentage of overall absence (6)	Pupil enrolments in schools during 2011/12 (5)		Percentage of overall absence (6)	Pupil enrolments in schools during 2011/12 (5)		Percentage of overall absence (6)	Pupil enrolments in schools during 2011/12 (5)		Percentage of overall absence (6)
	Number	Percentage		Number	Percentage		Number	Percentage		Number	Percentage	
Overall absence rate:												
None	331,850	9.6	0.0	241,635	8.4	0.0	6,430	8.1	0.0	579,915	9.0	0.0
more than 0, up to and including 4%	1,714,020	49.6	22.6	1,264,175	43.9	14.9	26,920	33.9	7.6	3,005,115	46.9	18.2
more than 4%, up to and including 6%	524,065	15.2	17.4	410,435	14.3	12.1	10,420	13.1	7.1	944,925	14.7	14.4
more than 6%, up to and including 10%	528,175	15.3	27.0	482,330	16.8	22.3	13,330	16.8	14.3	1,023,835	16.0	24.3
more than 10%, up to and including 20%	294,290	8.5	24.7	349,150	12.1	27.5	12,985	16.3	24.4	656,425	10.2	26.2
more than 20%, up to and including 30%	36,590	1.1	4.8	66,530	2.3	8.9	3,980	5.0	12.6	107,100	1.7	7.1
more than 30%, up to and including 50%	14,545	0.4	2.3	38,390	1.3	7.4	2,895	3.6	13.6	55,830	0.9	5.2
more than 50%	9,905	0.3	1.3	25,475	0.9	6.9	2,565	3.2	20.4	37,945	0.6	4.6
Total	3,453,445	100.0	100.0	2,878,120	100.0	100.0	79,520	100.0	100.0	6,411,085	100.0	100.0

Source: School Census

(1) Includes middle schools as deemed.

(2) Includes primary academies, including free schools.

(3) Includes city technology colleges and secondary academies, including free schools.

(4) Includes maintained special schools, non-maintained special schools and special academies. Excludes general hospital schools, independent special schools and independent schools approved for SEN pupils.

(5) Number of pupil enrolments in schools from start of the school year up until 1 June 2012. Includes pupils on the school roll for at least one session who are aged between 5 and 15, excluding boarders. Some pupils may be counted more than once (if they moved schools during the school year or are registered in more than one school). See Technical Notes 14 to 16.

(6) The number of sessions missed due to overall absence in each band expressed as a percentage of the total number of sessions missed due to overall absence. See Technical Note 4.

Totals may not appear to equal the sum of the component parts because numbers have been rounded to the nearest 5.

Table 4.1

**STATE-FUNDED PRIMARY, SECONDARY AND SPECIAL SCHOOLS (1)(2)(3)(4):
NUMBER OF SCHOOLS BY THE PERCENTAGE OF PERSISTENT ABSENTEES (5)(6)**

2011/12

England

	State-funded primary schools (1)(2)		State-funded secondary schools (1)(3)		Special schools (4)		Total	
	Number of schools	% of schools	Number of schools	% of schools	Number of schools	% of schools	Number of schools	% of schools
Percentage of school enrolments who are Persistent Absentees (7):								
None	1,680	10.0	1	0.0	24	2.4	1,705	8.1
more than 0, up to and including 3%	8,171	48.6	302	9.2	8	0.8	8,481	40.2
more than 3%, up to and including 6%	5,042	30.0	975	29.9	74	7.4	6,091	28.9
more than 6%, up to and including 9%	1,465	8.7	1,069	32.7	122	12.2	2,656	12.6
more than 9%, up to and including 12%	338	2.0	608	18.6	152	15.3	1,098	5.2
more than 12%, up to and including 15%	82	0.5	212	6.5	140	14.1	434	2.1
more than 15%, up to and including 20%	31	0.2	85	2.6	188	18.9	304	1.4
more than 20%	14	0.1	14	0.4	288	28.9	316	1.5
Total	16,823	100.0	3,266	100.0	996	100.0	21,085	100.0

Source: School Census

(1) Includes middle schools as deemed.

(2) Includes primary academies, including free schools.

(3) Includes city technology colleges and secondary academies, including free schools.

(4) Includes maintained special schools, non-maintained special schools and special academies. Excludes general hospital schools, independent special schools and independent schools approved for SEN pupils.

(5) Includes schools with at least one enrolment from the start of the school year up until 1 June 2012. Includes pupils on the school roll for at least one session who are aged between 5 and 15, excluding boarders. Some pupils may be counted in more than one school (if they moved schools during the school year or are registered at more than one school). See Technical Notes 14 to 16.

(6) Persistent Absentees are defined as having an overall absence rate of around **15 per cent** or more. This equates to 46 or more sessions of absence (authorised and unauthorised) during the year.

(7) The number of Persistent Absentees expressed as a percentage of the total number of enrolments.

Table 5.1

**STATE-FUNDED PRIMARY, SECONDARY AND SPECIAL SCHOOLS (1)(2)(3)(4):
PUPIL ABSENCE BY CHARACTERISTICS (5)**

2011/12

England

	State-funded primary schools (1)(2)				State-funded secondary schools (1)(3)				Special schools (4)				Total				
	Pupil enrolments in schools during 2011/12 (6)	Percentage of sessions missed (7):			Pupil enrolments in schools during 2011/12 (6)	Percentage of sessions missed (7):			Pupil enrolments in schools during 2011/12 (6)	Percentage of sessions missed (7):			Pupil enrolments in schools during 2011/12 (6)	Percentage of sessions missed (7):			
		Overall absence	Authorised absence	Unauthorised absence		Overall absence	Authorised absence	Unauthorised absence		Overall absence	Authorised absence	Unauthorised absence		Overall absence	Authorised absence	Unauthorised absence	
Gender																	
Boys	1,762,960	4.4	3.7	0.7	1,459,810	5.7	4.4	1.3	57,190	9.7	7.4	2.3	3,279,955	5.1	4.1	1.0	
Girls	1,690,485	4.3	3.7	0.7	1,418,310	6.0	4.7	1.3	22,330	9.4	8.2	1.1	3,131,125	5.1	4.2	1.0	
Total	3,453,445	4.4	3.7	0.7	2,878,120	5.9	4.6	1.3	79,520	9.6	7.6	2.0	6,411,085	5.1	4.1	1.0	
Free school meal (FSM) eligibility																	
Known to be eligible for FSM	659,495	6.1	4.6	1.4	462,475	9.1	5.9	3.2	27,960	10.9	8.0	2.9	1,149,930	7.4	5.2	2.2	
Not eligible for FSM	2,767,955	4.0	3.5	0.5	2,403,220	5.3	4.3	1.0	48,810	8.7	7.3	1.4	5,219,985	4.6	3.9	0.7	
Total (8)	3,453,445	4.4	3.7	0.7	2,878,120	5.9	4.6	1.3	79,520	9.6	7.6	2.0	6,411,085	5.1	4.1	1.0	
National curriculum year group:																	
1 and below	616,050	5.1	4.3	0.7	2,720	5.8	4.5	1.3	3,625	10.5	10.0	0.5	622,395	5.1	4.4	0.7	
2	601,490	4.5	3.8	0.7	2,390	5.1	4.1	1.0	3,955	9.4	8.8	0.6	607,835	4.5	3.8	0.7	
3	587,235	4.2	3.5	0.7	2,330	4.4	3.4	0.9	4,500	8.3	7.7	0.6	594,065	4.2	3.5	0.7	
4	568,550	4.1	3.5	0.6	2,190	4.6	3.6	1.0	4,890	7.9	7.2	0.7	575,630	4.2	3.5	0.6	
5	529,445	4.2	3.5	0.6	18,220	4.2	3.7	0.4	5,235	7.6	6.9	0.7	552,900	4.2	3.6	0.6	
6	521,895	4.1	3.5	0.6	22,255	4.5	4.0	0.5	5,915	7.7	7.0	0.8	550,065	4.1	3.5	0.6	
7	2,650	4.7	4.1	0.6	546,155	4.5	3.9	0.7	8,580	7.6	6.5	1.1	557,385	4.6	3.9	0.7	
8	75	4.4	3.9	0.5	564,285	5.4	4.4	1.0	9,260	8.5	6.8	1.7	573,620	5.4	4.4	1.0	
9	20	4.3	4.1	0.3	570,115	5.9	4.7	1.2	10,070	9.8	7.5	2.3	580,205	6.0	4.7	1.3	
10	15	3.4	3.3	0.1	579,205	6.2	4.6	1.6	10,415	11.4	7.9	3.6	589,635	6.3	4.7	1.7	
11	20	3.3	2.9	0.4	555,210	7.3	5.3	2.1	9,615	13.0	8.5	4.5	564,840	7.4	5.3	2.1	
12 and above	0	0.0	0.0	0.0	620	9.4	6.3	3.1	35	9.4	9.1	0.4	660	9.4	6.5	2.9	
Total (8)	3,453,445	4.4	3.7	0.7	2,878,120	5.9	4.6	1.3	79,520	9.6	7.6	2.0	6,411,085	5.1	4.1	1.0	
First language																	
First language is known or believed to be other than English	614,965	4.6	3.7	1.0	373,240	4.9	3.6	1.3	9,430	10.7	9.6	1.2	997,635	4.8	3.7	1.1	
First language is known or believed to be English	2,831,370	4.3	3.7	0.6	2,494,700	6.0	4.7	1.3	69,845	9.4	7.3	2.1	5,395,920	5.2	4.2	0.9	
Total (8)	3,453,445	4.4	3.7	0.7	2,878,120	5.9	4.6	1.3	79,520	9.6	7.6	2.0	6,411,085	5.1	4.1	1.0	
Special educational needs																	
Statements of SEN	51,750	6.6	5.8	0.8	58,580	8.0	6.0	2.0	74,355	9.3	7.5	1.9	184,685	8.2	6.6	1.6	
School Action Plus	239,315	5.8	4.7	1.1	196,950	9.9	6.5	3.5	1,740	19.6	13.0	6.6	438,000	7.7	5.5	2.1	
School Action	408,620	5.3	4.3	1.0	372,615	7.5	5.4	2.1	185	16.0	10.7	5.3	781,425	6.4	4.8	1.6	
No identified SEN	2,727,765	4.1	3.5	0.6	2,237,550	5.2	4.2	1.0	490	11.9	9.4	2.5	4,965,810	4.6	3.8	0.7	
Total (8)	3,453,445	4.4	3.7	0.7	2,878,120	5.9	4.6	1.3	79,520	9.6	7.6	2.0	6,411,085	5.1	4.1	1.0	

Source: School Census

(1) Includes middle schools as deemed.

(2) Includes primary academies, including free schools.

(3) Includes city technology colleges and secondary academies, including free schools.

(4) Includes maintained special schools, non-maintained special schools and special academies. Excludes general hospital schools, independent special schools and independent schools approved for SEN pupils.

(5) See Technical Note 15 for further information on how absence and pupil characteristic data have been linked.

(6) Number of enrolments in schools from start of the school year up until 1 June 2012. Includes pupils on the school roll for at least one session who are aged between 5 and 15, excluding boarders. Some pupils may be counted more than once (if they moved schools during the school year or are registered in more than one school). See Technical Notes 14 to 16.

(7) The number of sessions missed due to overall/authorised/ unauthorised absence expressed as a percentage of the total number of possible sessions. See Technical Note 4.

(8) Includes pupil enrolments for whom characteristic data were unclassified or missing. Total rates may be higher than rates for each subgroup.

Totals may not appear to equal the sum of the component parts because numbers have been rounded to the nearest 5.

Table 5.2
STATE-FUNDED PRIMARY, SECONDARY AND SPECIAL SCHOOLS (1)(2)(3)(4):
CHARACTERISTICS OF PERSISTENT ABSENTEES (5)(6)
 2011/12
 England

	Persistent Absentees (5)																			
	State-funded primary schools (1)(2)					State-funded secondary schools (1)(3)					Special schools (4)					Total				
	Pupil enrolments in schools during 2011/12 (7)		Percentage of sessions missed (8):			Pupil enrolments in schools during 2011/12 (7)		Percentage of sessions missed (8):			Pupil enrolments in schools during 2011/12 (7)		Percentage of sessions missed (8):			Pupil enrolments in schools during 2011/12 (7)		Percentage of sessions missed (8):		
	Number	Percentage (9)	Overall absence	Authorised absence	Unauthorised absence	Number	Percentage (9)	Overall absence	Authorised absence	Unauthorised absence	Number	Percentage (9)	Overall absence	Authorised absence	Unauthorised absence	Number	Percentage (9)	Overall absence	Authorised absence	Unauthorised absence
Gender																				
Boys	56,700	3.2	21.3	15.2	6.1	102,790	7.0	26.0	15.3	10.7	9,385	16.4	32.6	21.5	11.1	168,875	5.1	24.8	15.7	9.2
Girls	51,685	3.1	20.7	14.6	6.1	109,705	7.7	26.1	15.5	10.7	3,585	16.0	29.8	24.8	5.0	164,975	5.3	24.5	15.4	9.1
Total	108,385	3.1	21.0	14.9	6.1	212,495	7.4	26.1	15.4	10.7	12,970	16.3	31.8	22.4	9.4	333,850	5.2	24.7	15.5	9.1
Free school meal (FSM) eligibility																				
Known to be eligible for FSM	45,850	7.0	21.4	13.7	7.7	74,540	16.1	27.7	14.0	13.7	5,800	20.7	31.4	20.1	11.3	126,190	11.0	25.6	14.2	11.4
Not eligible for FSM	62,430	2.3	20.7	15.8	4.9	137,795	5.7	25.2	16.1	9.1	6,985	14.3	31.7	24.1	7.6	207,210	4.0	24.0	16.3	7.7
Total (10)	108,385	3.1	21.0	14.9	6.1	212,495	7.4	26.1	15.4	10.7	12,970	16.3	31.8	22.4	9.4	333,850	5.2	24.7	15.5	9.1
National curriculum year group:																				
1 and below	26,365	4.3	20.8	15.1	5.7	155	5.8	22.2	13.8	8.4	725	20.0	27.4	25.7	1.7	27,245	4.4	21.0	15.4	5.6
2	19,115	3.2	20.8	14.6	6.2	110	4.6	21.6	14.2	7.5	650	16.4	27.3	25.1	2.2	19,875	3.3	21.0	14.9	6.1
3	16,435	2.8	21.0	14.5	6.4	75	3.3	21.1	11.7	9.3	580	12.9	28.0	25.3	2.7	17,090	2.9	21.2	14.9	6.3
4	15,920	2.8	21.0	14.7	6.3	95	4.2	21.6	12.9	8.7	635	13.0	26.3	23.3	3.0	16,645	2.9	21.2	15.0	6.2
5	15,345	2.9	21.2	15.2	6.0	520	2.9	21.7	17.2	4.5	610	11.6	26.7	23.4	3.3	16,475	3.0	21.5	15.6	5.8
6	14,985	2.9	21.4	15.5	5.9	720	3.2	23.0	17.5	5.5	745	12.6	26.9	23.3	3.6	16,450	3.0	21.7	15.9	5.8
7	110	4.2	21.8	15.6	6.2	22,290	4.1	23.1	15.9	7.2	1,035	12.1	28.6	22.2	6.4	23,440	4.2	23.4	16.2	7.1
8	5	3.9	26.2	18.5	7.7	32,370	5.7	24.3	15.8	8.5	1,335	14.4	29.7	21.1	8.6	33,705	5.9	24.5	16.0	8.5
9	0	0.0	0.0	0.0	0.0	41,350	7.3	25.6	15.6	9.9	1,800	17.9	32.2	21.8	10.4	43,150	7.4	25.9	15.9	10.0
10	0	0.0	0.0	0.0	0.0	50,450	8.7	27.2	15.1	12.1	2,245	21.5	35.2	20.8	14.4	52,695	8.9	27.5	15.3	12.2
11	0	0.0	0.0	0.0	0.0	64,100	11.5	27.5	15.1	12.4	2,360	24.6	37.8	21.3	16.6	66,460	11.8	27.9	15.3	12.6
12 and above	0	0.0	0.0	0.0	0.0	90	14.2	26.2	16.6	9.6	5	16.2	30.0	28.9	1.1	95	14.3	26.5	17.4	9.0
Total (10)	108,385	3.1	21.0	14.9	6.1	212,495	7.4	26.1	15.4	10.7	12,970	16.3	31.8	22.4	9.4	333,850	5.2	24.7	15.5	9.1
First language																				
First language is known or believed to be other than English	21,430	3.5	20.6	13.4	7.3	18,285	4.9	24.2	13.0	11.2	1,960	20.8	29.3	25.5	3.8	41,670	4.2	22.6	13.8	8.8
First language is known or believed to be English	86,670	3.1	21.1	15.3	5.8	193,400	7.8	26.3	15.6	10.6	10,970	15.7	32.2	21.9	10.4	291,040	5.4	24.9	15.8	9.2
Total (10)	108,385	3.1	21.0	14.9	6.1	212,495	7.4	26.1	15.4	10.7	12,970	16.3	31.8	22.4	9.4	333,850	5.2	24.7	15.5	9.1
Special educational needs																				
Statements of SEN	4,550	8.8	24.2	20.1	4.1	7,940	13.6	28.7	18.2	10.5	12,250	16.5	31.3	22.2	9.1	24,740	13.4	29.2	20.6	8.6
School Action Plus	15,690	6.6	22.6	16.2	6.4	36,160	18.4	30.7	16.0	14.7	465	26.7	40.8	25.0	15.8	52,315	11.9	28.3	16.2	12.2
School Action	21,310	5.2	21.2	14.2	7.0	44,155	11.8	26.3	14.5	11.8	50	27.3	31.2	20.2	10.9	65,515	8.4	24.7	14.4	10.3
No identified SEN	66,730	2.4	20.3	14.5	5.8	124,080	5.5	24.5	15.4	9.1	20	4.3	33.8	25.4	8.4	190,830	3.8	23.0	15.1	8.0
Total (10)	108,385	3.1	21.0	14.9	6.1	212,495	7.4	26.1	15.4	10.7	12,970	16.3	31.8	22.4	9.4	333,850	5.2	24.7	15.5	9.1

Source: School Census

- (1) Includes middle schools as deemed.
- (2) Includes primary academies, including free schools.
- (3) Includes city technology colleges and secondary academies, including free schools.
- (4) Includes maintained special schools, non-maintained special schools and special academies. Excludes general hospital schools, independent special schools and independent schools approved for SEN pupils.
- (5) Persistent Absentees are defined as having an overall absence rate of around **5 per cent** or more. This equates to 46 or more sessions of absence (authorised and unauthorised) during the year.
- (6) See Technical Note 15 for further information on how absence and pupil characteristic data have been linked.
- (7) Number of enrolments in schools from start of the school year up until 1 June 2012. Includes pupils on the school roll for at least one session who are aged between 5 and 15, excluding boarders. Some pupils may be counted more than once (if they moved schools during the school year or are registered in more than one school). See Technical Notes 14 to 16.
- (8) The number of sessions missed due to overall/authorised/unauthorised absence expressed as a percentage of the total number of possible sessions. See Technical Note 4.
- (9) The number of persistent absentee enrolments expressed as a percentage of the total number of enrolments with same characteristics.
- (10) Includes pupil enrolments for whom characteristic data were unclassified or missing. Total rates may be higher than rates for each subgroup.

Totals may not appear to equal the sum of the component parts because numbers have been rounded to the nearest 5.

Table 5.3

**STATE-FUNDED PRIMARY, SECONDARY AND SPECIAL SCHOOLS (1)(2)(3)(4):
PUPIL ABSENCE BY ETHNIC GROUP (5)**

2011/12

England

	State-funded primary schools (1)(2)				State-funded secondary schools (1)(3)				Special schools (4)				Total			
	Pupil enrolments in schools during 2011/12 (6)	Percentage of sessions missed (7):			Pupil enrolments in schools during 2011/12 (6)	Percentage of sessions missed (7):			Pupil enrolments in schools during 2011/12 (6)	Percentage of sessions missed (7):			Pupil enrolments in schools during 2011/12 (6)	Percentage of sessions missed (7):		
		Overall absence	Authorised absence	Unauthorised absence		Overall absence	Authorised absence	Unauthorised absence		Overall absence	Authorised absence	Unauthorised absence		Overall absence	Authorised absence	Unauthorised absence
White	2,595,840	4.4	3.8	0.6	2,279,860	6.1	4.8	1.3	58,385	9.3	7.3	2.0	4,934,085	5.2	4.3	1.0
White British	2,419,375	4.2	3.7	0.5	2,161,770	6.0	4.7	1.3	55,905	9.2	7.2	2.0	4,637,050	5.1	4.2	0.9
Irish	10,165	4.8	4.0	0.8	9,710	6.5	5.0	1.5	220	12.3	9.6	2.7	20,095	5.7	4.6	1.1
Traveller of Irish heritage	3,555	20.3	14.0	6.3	1,190	24.4	13.4	11.0	90	26.5	17.1	9.4	4,835	21.5	13.9	7.6
Gypsy/ Roma	10,340	14.2	9.1	5.1	5,145	18.1	8.9	9.2	200	19.5	12.6	6.9	15,685	15.6	9.1	6.5
Any other white background	152,410	5.3	4.3	1.0	102,040	6.3	4.5	1.8	1,975	10.5	9.1	1.4	256,425	5.7	4.4	1.3
Mixed	164,360	4.8	3.8	0.9	112,145	6.3	4.6	1.6	3,295	10.4	7.9	2.5	279,805	5.4	4.2	1.2
White and Black Caribbean	47,265	5.2	4.0	1.2	37,930	7.3	5.1	2.2	1,185	12.3	8.5	3.9	86,380	6.2	4.5	1.7
White and Black African	19,985	4.4	3.6	0.9	12,365	5.6	4.3	1.4	340	7.2	5.9	1.3	32,690	4.9	3.9	1.1
White and Asian	37,055	4.5	3.8	0.7	23,725	5.6	4.4	1.2	545	9.5	7.7	1.9	61,325	5.0	4.0	0.9
Any other mixed background	60,055	4.7	3.8	0.9	38,130	5.9	4.5	1.4	1,230	9.8	7.9	1.9	99,410	5.2	4.1	1.1
Asian	349,425	4.7	3.8	0.9	240,020	4.7	3.7	1.0	6,270	11.2	10.1	1.2	595,715	4.7	3.8	0.9
Indian	88,930	4.1	3.5	0.6	66,970	3.9	3.3	0.6	1,145	9.5	8.8	0.7	157,045	4.1	3.5	0.6
Pakistani	145,995	4.9	3.9	1.0	94,135	5.4	4.1	1.3	3,150	11.9	10.6	1.3	243,285	5.2	4.1	1.1
Bangladeshi	58,480	5.1	4.0	1.0	39,570	4.9	3.7	1.2	915	12.1	10.9	1.2	98,965	5.0	4.0	1.1
Any other Asian background	56,015	4.3	3.5	0.7	39,350	4.1	3.3	0.9	1,060	10.4	9.3	1.1	96,425	4.3	3.5	0.8
Black	186,515	3.4	2.7	0.8	135,410	4.0	3.0	1.0	4,450	8.0	6.8	1.2	326,375	3.8	2.9	0.9
Black Caribbean	46,025	4.3	3.2	1.1	39,350	5.2	3.8	1.4	1,240	8.8	6.6	2.3	86,615	4.8	3.5	1.3
Black African	117,135	3.0	2.4	0.6	80,960	3.3	2.5	0.8	2,510	7.6	6.9	0.7	200,605	3.2	2.5	0.7
Any other Black background	23,355	3.9	2.9	0.9	15,100	4.8	3.5	1.3	700	7.8	6.7	1.1	39,150	4.3	3.2	1.1
Chinese	12,265	3.2	2.8	0.4	10,160	2.6	2.3	0.4	180	7.7	7.3	0.4	22,605	3.0	2.6	0.4
Any other ethnic group	55,405	4.7	3.6	1.1	37,235	4.8	3.5	1.3	825	9.7	8.4	1.3	93,465	4.8	3.6	1.2
Minority ethnic pupils (8)	944,440	4.7	3.7	1.0	653,060	5.2	3.9	1.3	17,505	10.2	8.7	1.6	1,615,005	4.9	3.8	1.1
All pupils (9)	3,453,445	4.4	3.7	0.7	2,878,120	5.9	4.6	1.3	79,520	9.6	7.6	2.0	6,411,085	5.1	4.1	1.0

Source: School Census

(1) Includes middle schools as deemed.

(2) Includes primary academies, including free schools.

(3) Includes city technology colleges and secondary academies, including free schools.

(4) Includes maintained special schools, non-maintained special schools and special academies. Excludes general hospital schools, independent special schools and independent schools approved for SEN pupils.

(5) See Technical Note 15 for further information on how absence and pupil characteristic data have been linked.

(6) Number of enrolments in schools from start of the school year up until 1 June 2012. Includes pupils on the school roll for at least one session who are aged between 5 and 15, excluding boarders. Some pupils may be counted more than once (if they moved schools during the school year or are registered in more than one school). See Technical Notes 14 to 16.

(7) The number of sessions missed due to overall/authorised/unauthorised absence expressed as a percentage of the total number of possible sessions. See Technical Note 4.

(8) Pupils who have been classified according to their ethnic group, excluding White British.

(9) Includes pupil enrolments for whom information on ethnic group was unclassified or missing.

Totals may not appear to equal the sum of the component parts because numbers have been rounded to the nearest 5.

Table 5.4

STATE-FUNDED PRIMARY, SECONDARY AND SPECIAL SCHOOLS (1)(2)(3)(4)

PERSISTENT ABSENTEES BY ETHNIC GROUP (5)(6)

2011/12

England

	Persistent Absentees (5)																							
	State-funded primary schools (1)(2)						State-funded secondary schools (1)(3)						Special schools (4)						Total					
	Pupil enrolments in schools during 2011/12 (7)		Percentage of sessions missed (8):				Pupil enrolments in schools during 2011/12 (7)		Percentage of sessions missed (8):				Pupil enrolments in schools during 2011/12 (7)		Percentage of sessions missed (8):				Pupil enrolments in schools during 2011/12 (7)			Percentage of sessions missed (8):		
	Number	Percentage (9)	Overall absence	Authorised absence	Unauthorised absence		Number	Percentage (9)	Overall absence	Authorised absence	Unauthorised absence		Number	Percentage (9)	Overall absence	Authorised absence	Unauthorised absence		Number	Percentage (9)	Overall absence	Authorised absence	Unauthorised absence	
White	82,345	3.2	21.1	15.4	5.7	182,595	8.0	26.2	15.6	10.7		9,635	16.5	31.9	21.7	10.2		274,580	5.6	24.9	15.7	9.2		
White British	70,035	2.9	20.6	15.3	5.3	170,945	7.9	26.2	15.7	10.5		9,060	16.2	31.8	21.5	10.3		250,045	5.4	24.8	15.8	9.0		
Irish	450	4.4	23.1	15.4	7.7	875	9.0	26.4	15.4	11.1		60	27.7	30.6	21.7	8.9		1,385	6.9	25.5	15.7	9.9		
Traveller Of Irish Heritage	1,500	42.3	34.3	23.6	10.7	625	52.3	37.9	19.7	18.2		50	55.1	41.7	26.0	15.7		2,175	45.0	35.5	22.6	13.0		
Gypsy / Roma	3,205	31.0	27.6	17.2	10.4	2,125	41.3	31.1	13.9	17.2		80	41.4	36.6	21.8	14.9		5,415	34.5	29.1	16.0	13.1		
Any Other white Background	7,150	4.7	20.9	14.1	6.8	8,025	7.9	25.2	13.2	12.0		385	19.4	31.2	25.4	5.8		15,560	6.1	23.4	13.9	9.5		
Mixed	6,885	4.2	21.0	13.6	7.5	9,470	8.4	26.4	14.6	11.9		620	18.8	33.3	22.0	11.3		16,970	6.1	24.5	14.4	10.1		
White and Black Caribbean	2,515	5.3	21.1	13.0	8.1	4,225	11.1	27.4	14.2	13.1		250	21.1	38.3	22.4	15.8		6,990	8.1	25.5	14.1	11.4		
White and Black African	710	3.5	21.5	14.2	7.2	835	6.7	26.0	15.0	11.0		40	12.1	26.8	19.0	7.8		1,585	4.8	24.0	14.7	9.2		
White and Asian	1,285	3.5	21.0	14.1	6.9	1,615	6.8	25.2	14.7	10.5		95	17.7	31.0	22.2	8.8		2,995	4.9	23.6	14.7	8.9		
Any Other mixed Background	2,375	4.0	20.8	13.7	7.1	2,795	7.3	25.9	14.9	11.1		230	18.7	30.0	22.0	8.0		5,400	5.4	23.9	14.7	9.2		
Asian	11,985	3.4	19.7	13.2	6.5	10,165	4.2	22.8	14.1	8.7		1,435	22.9	28.9	25.3	3.6		23,585	4.0	21.6	14.3	7.3		
Indian	2,070	2.3	19.4	14.0	5.4	1,870	2.8	22.1	15.5	6.6		205	18.0	27.7	24.9	2.8		4,145	2.6	21.0	15.2	5.8		
Pakistani	5,950	4.1	19.8	12.8	7.0	5,130	5.4	22.6	13.7	9.0		795	25.3	29.4	25.6	3.7		11,875	4.9	21.7	14.1	7.6		
Bangladeshi	2,420	4.1	19.5	13.3	6.3	1,800	4.6	23.6	13.6	10.0		230	25.1	28.4	25.2	3.2		4,450	4.5	21.6	14.0	7.6		
Any Other Asian Background	1,545	2.8	20.2	13.8	6.5	1,365	3.5	23.4	14.2	9.3		205	19.5	29.0	25.0	4.1		3,120	3.2	22.2	14.7	7.5		
Black	3,930	2.1	21.7	13.3	8.5	5,180	3.8	24.9	14.2	10.8		595	13.4	29.6	23.6	5.9		9,705	3.0	23.9	14.4	9.5		
Caribbean	1,730	3.8	21.3	12.4	8.9	2,520	6.4	25.3	14.3	11.0		195	15.7	31.0	19.8	11.2		4,450	5.1	24.0	13.8	10.2		
African	1,555	1.3	22.2	14.4	7.8	1,835	2.3	24.3	14.1	10.2		320	12.7	28.7	25.7	3.0		3,705	1.8	23.9	15.3	8.6		
Any Other Black Background	640	2.7	21.6	12.9	8.7	825	5.5	25.1	14.0	11.2		85	11.9	29.3	24.6	4.8		1,550	4.0	23.9	14.1	9.8		
Chinese	170	1.4	20.1	15.3	4.8	155	1.5	23.2	17.4	5.8		25	13.7	29.5	27.1	2.4		350	1.5	22.1	17.1	5.1		
Any other ethnic group	1,825	3.3	21.3	13.4	7.9	1,685	4.5	24.6	13.2	11.4		165	20.1	26.5	22.3	4.2		3,675	3.9	23.1	13.8	9.3		
Minority ethnic pupils (10)	37,105	3.9	21.7	14.2	7.5	38,300	5.9	25.3	14.1	11.2		3,415	19.5	30.3	24.2	6.2		78,820	4.9	23.9	14.6	9.3		
All pupils (11)	108,385	3.1	21.0	14.9	6.1	212,495	7.4	26.1	15.4	10.7		12,970	16.3	31.8	22.4	9.4		333,850	5.2	24.7	15.5	9.1		

Source: School Census

(1) Includes middle schools as deemed.

(2) Includes primary academies, including free schools.

(3) Includes city technology colleges and secondary academies, including free schools.

(4) Includes maintained special schools, non-maintained special schools and special academies. Excludes general hospital schools, independent special schools and independent schools approved for SEN pupils.

(5) Persistent Absentees are defined as having an overall absence rate of around 15 per cent or more. This equates to 46 or more sessions of absence (authorised and unauthorised) during the year.

(6) See Technical Note 15 for further information on how absence and pupil characteristic data have been linked.

(7) Number of enrolments in schools from start of the school year up until 1 June 2012. Includes pupils on the school roll for at least one session who are aged between 5 and 15, excluding boarders. Some pupils may be counted more than once (if they moved schools during the school year or are registered in more than one school). See Technical Notes 14 to 16.

(8) The number of sessions missed due to overall/authorised/unauthorised absence expressed as a percentage of the total number of possible sessions of Persistent Absentees. See Technical Note 4.

(9) The number of Persistent Absentee enrolments expressed as a percentage of the total number of pupil enrolments of same ethnic origin.

(10) Pupils who have been classified according to their ethnic group, excluding White British.

(11) Includes pupil enrolments for whom information on ethnic group was unclassified or missing.

Totals may not appear to equal the sum of the component parts because numbers have been rounded to the nearest 5.

Table 5.5

**STATE-FUNDED PRIMARY, SECONDARY AND SPECIAL SCHOOLS(1)(2)(3)(4):
ABSENCE RATES BY TYPE OF SPECIAL EDUCATIONAL NEED (5)(6)**

2011/12

England

	Pupils at School Action Plus or with statements of SEN (6)					
	Pupil enrolments in schools during 2011/12 (8)	Percentage of sessions missed (7):			Persistent Absentees	
		Overall absence	Authorised absence	Unauthorised absence	Number of pupil enrolments who are Persistent Absentees (9)	Percentage of pupil enrolments who are Persistent Absentees
Specific learning difficulty	63,775	6.7	5.2	1.5	6,190	9.7
Moderate learning difficulty	127,300	7.4	5.4	2.0	14,865	11.7
Severe learning difficulty	22,560	7.4	6.6	0.7	2,670	11.8
Profound & multiple learning difficulty	7,260	13.6	12.9	0.7	2,165	29.8
Behaviour, emotional & social difficulties	123,920	10.7	6.8	3.9	25,115	20.3
Speech, language and communications needs	94,685	5.5	4.6	1.0	5,975	6.3
Hearing impairment	12,935	6.3	5.3	1.0	1,050	8.1
Visual impairment	7,155	6.7	5.7	1.0	675	9.4
Multi- sensory impairment	760	8.3	7.5	0.9	115	15.3
Physical disability	21,430	9.6	8.7	0.9	4,035	18.8
Autistic spectrum disorder	55,715	6.3	5.4	0.9	4,885	8.8
Other difficulty/disability	22,890	9.0	6.8	2.2	3,705	16.2
Total (10)	622,685	7.8	5.8	2.0	77,055	12.4

Source: School Census

(1) Includes middle schools as deemed.

(2) Includes primary academies, including free schools.

(3) Includes city technology colleges and secondary academies, including free schools.

(4) Includes maintained special schools, non-maintained special schools and special academies. Excludes general hospital schools, independent special schools and independent schools approved for SEN pupils.

(5) See Technical Note 15 for further information on how absence and pupil characteristic data have been linked.

(6) Pupils at School Action Plus and those pupils with a statement of SEN provided information on their primary need, and if appropriate, their secondary need.

Information on primary need only is given here.

(7) The number of sessions missed due to overall/authorised/unauthorised absence expressed as a percentage of the total number of possible sessions. See Technical Note 4.

(8) Number of enrolments in schools from start of the school year up until 1 June 2012. Includes pupils on the school roll for at least one session who are aged between 5 and 15, excluding boarders. Some pupils may be counted more than once (if they moved schools during the school year or are registered in more than one school).

See Technical Notes 14 to 16.

(9) Persistent Absentees are defined as having an overall absence rate of around **15 per cent** or more. This equates to 46 or more sessions of absence (authorised and unauthorised) during the year.

(10) Includes pupil enrolments for whom information on type of special educational need was unclassified or missing.

Totals may not appear to equal the sum of component parts because numbers have been rounded to the nearest 5.

Table 6.1
STATE-FUNDED PRIMARY, SECONDARY AND SPECIAL SCHOOLS (1)(2)(3)(4):
PUPIL ABSENCE IN SCHOOLS BY INCOME DEPRIVATION AFFECTING CHILDREN INDICES (IDACI) DECILE (5)(6) OF PUPIL RESIDENCE
 2010/11 and 2011/12
 England

IDACI decile (4)(5)	2010/11						2011/12					
	Number of enrolments during 2010/11 (7)(8)	Percentage of sessions missed (9):			Number of persistent absentees (10)	Percentage of persistent absentees (11)	Number of enrolments during 2011/12 (7)(8)	Percentage of sessions missed (9):			Number of persistent absentees (10)	Percentage of persistent absentees (11)
		Overall absence	Authorised absence	Unauthorised absence				Overall absence	Authorised absence	Unauthorised absence		
0 - 10 % most deprived	798,958	7.0	5.0	2.0	76,242	9.5	825,946	6.0	4.3	1.7	62,411	7.6
10 - 20 %	709,201	6.8	5.1	1.7	64,126	9.0	732,121	5.9	4.4	1.5	53,020	7.2
20 - 30 %	645,267	6.5	5.1	1.4	52,124	8.1	663,566	5.7	4.4	1.3	43,833	6.6
30 - 40 %	607,584	6.2	5.0	1.1	43,682	7.2	622,102	5.5	4.4	1.1	37,669	6.1
40 - 50 %	585,267	5.8	4.9	0.9	36,235	6.2	595,953	5.2	4.3	0.9	31,519	5.3
50 - 60 %	566,516	5.4	4.7	0.7	30,184	5.3	574,237	4.9	4.2	0.7	26,464	4.6
60 - 70 %	570,042	5.1	4.5	0.6	25,495	4.5	576,922	4.6	4.0	0.6	22,604	3.9
70 - 80 %	566,394	4.8	4.3	0.5	21,887	3.9	570,214	4.3	3.8	0.5	19,355	3.4
80 - 90 %	562,804	4.5	4.1	0.4	18,152	3.2	565,933	4.1	3.7	0.4	16,404	2.9
90 - 100 % least deprived	536,144	4.2	3.9	0.3	13,733	2.6	539,915	3.8	3.4	0.3	12,601	2.3

Source: National Pupil Database

- (1) Includes middle schools as deemed.
- (2) Includes primary academies, including free schools.
- (3) Includes city technology colleges and secondary academies, including free schools.
- (4) Includes maintained special schools, non-maintained special schools and special academies. Excludes general hospital schools.
- (5) Income Deprivation Affecting Children Indices based on pupil postcode. Each SOA in England is given a score which ranks it between 1 and 32482, 1 being the most deprived.
- (6) IDACI bands for 2012 are based on 2010 IDACI scores. Care should be taken when comparing to IDACI tables for 2010 and earlier which are based on 2007 IDACI scores.
- (7) The residency of 232,937 pupils in 2010/11 and 142,393 pupils in 2011/12 is unknown due to missing or invalid postcode information. These pupils are excluded from the figures in the table.
- (8) Number of pupil enrolments in schools from start of the school year up until the end of the fifth half term. Includes pupils on the school roll for at least one session who are aged between 5 and 15, excluding boarders. Some pupils may be counted more than once (if they moved schools during the school year or are registered at more than one school). See Technical Notes 14 to 16.
- (9) The number of sessions missed due to overall/authorised/unauthorised expressed as a percentage of the total number of possible sessions. See Technical Note 4.
- (10) Persistent Absentees are defined as having an overall absence rate of around 15 per cent or more. This equates to 46 or more sessions of absence (authorised and unauthorised).
- (11) Number of Persistent Absentees expressed as a percentage of the total number of enrolments.