

**SFR 20/2012**

**25 September 2012**

**Coverage: England**

**Theme: Children,  
Education and Skills**

**Issued by**

Department for Education  
Sanctuary Buildings  
Great Smith Street  
London  
SW1P 3BT

**Telephone:**

**Press Office**  
020 7925 6789

**Public Enquiries**  
0870 000 2288

**Statistician**

Julie Glenndenning

**Email**

[cla.stats@education.gsi.gov.uk](mailto:cla.stats@education.gsi.gov.uk)

**Internet**

<http://www.education.gov.uk/rsgateway/DB/SFR/s001084/index.shtml>

**Children looked after in England (including adoption and care leavers) year ending 31 March 2012**

This Statistical First Release (SFR) provides information about looked after children in England for the year ending 31 March 2012. It includes information on the number of looked after children, the reason why a child is looked after, their legal status and placement type. It also includes information on the number of children who started to be looked after during the year ending 31 March 2012 and the number of children who ceased to be looked after during the year.

The publication also includes information on the number of looked after children who were placed for adoption, the number adopted, and the average time between different stages of the adoption process. Information on accommodation and activity of former care leavers now aged 19 is also included. All figures are based on data from the SSDA903 return collected each spring from all local authorities in England. This publication is the main source of information on the numbers of looked after children in England; it is used to inform policy decisions which aim to improve the outcomes for this vulnerable group of children. It is also used extensively by other organisations, including charities and campaigning groups, who have an interest in this subject.

**KEY POINTS**

**Note: All of the comparisons below and in this document relate to 31 March of the year in question.**

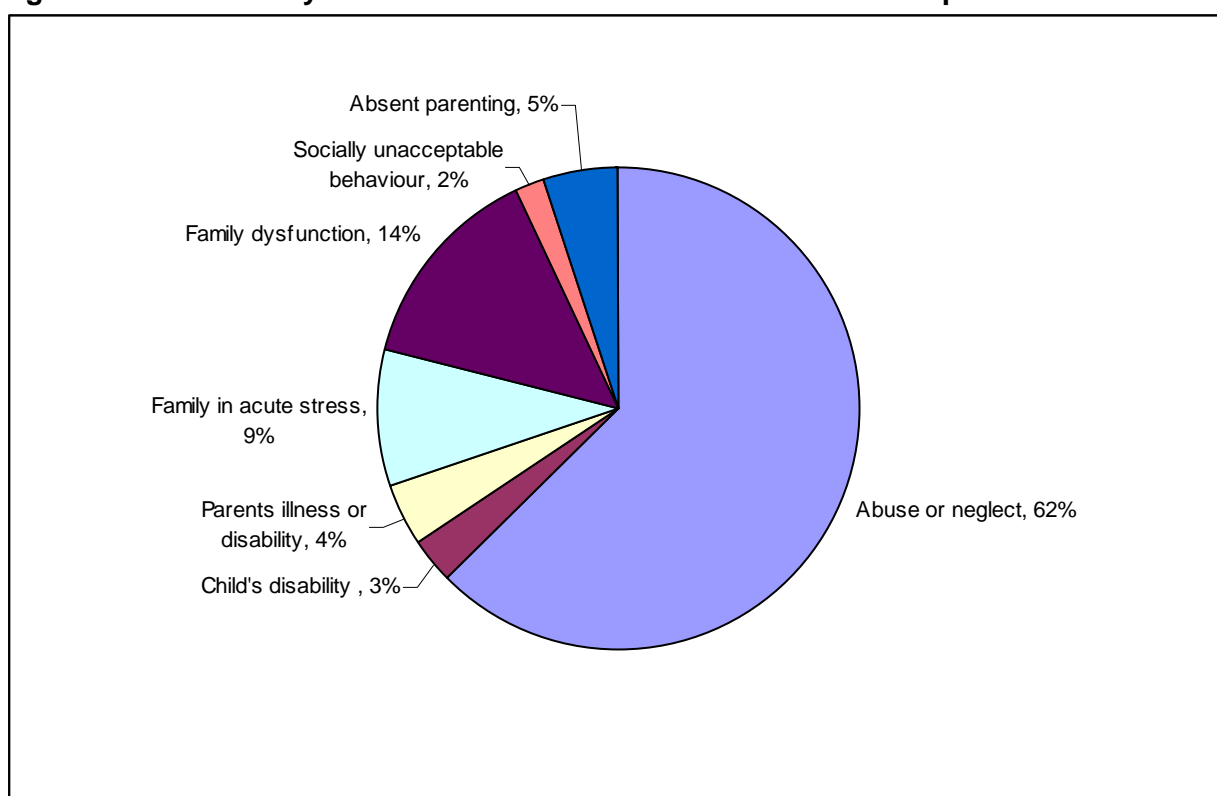
- There were 67,050 looked after children at 31 March 2012, an increase of 2 per cent compared to 31 March 2011 and an increase of 13 per cent compared to 31 March 2008.
- Of children looked after at 31 March 2012, 50,260 were cared for in a foster placement. This represents 75 per cent of all children looked after at 31 March 2012.
- There were 28,220 children who started to be looked after during the year ending 31 March 2012. This represents an increase of 3 per cent from the previous year's figure of 27,500 and an increase of 21 per cent from 2008.
- There were 27,350 children who ceased to be looked after during the year ending 31 March 2012. This is a small increase of 1 per cent from 2011 and an increase of 12 per cent from 2008.
- There were 3,450 looked after children adopted during the year ending 31 March 2012. This was the highest figure since 2006 and an increase of 12 per cent from the 2011 figure.

## Children looked after at 31 March 2012

There were 67,050 looked after children as of 31 March 2012, an increase of 2 per cent compared to 31 March 2011 and an increase of 13 per cent compared to 31 March 2008. The number of looked after children has increased steadily each year since 2008 and is now higher than at any point since 1997.

The majority of looked after children – 62% in 2012 - are provided with a service due to abuse or neglect. The reasons why looked after children are provided with a service have been relatively stable since 2008. Figure 1 shows the reasons for a child to be provided with a service and the proportions of children looked after recorded in each category.

**Figure 1: Reasons why children looked after at 31 March 2012 were provided with a service**



The majority of children looked after at 31 March 2012 (74 per cent) are from a White British background. The ethnic breakdown for children looked after has varied little since 2008.

At 31 March 2012, 40,100 children were looked after under a care order (either an interim or full care order). This represents 60 per cent of all legal statuses of looked after children. Since 2008 the percentage of all looked after children who are looked after under a care order has remained relatively stable, although the number of such children has risen by 9 per cent since 2008 in line with the overall rise in the number of looked after children.

There were 19,370 children looked after under a voluntary agreement under Section 20 of the Children's Act. This represents 29 per cent of all looked after children at 31 March 2012. Again this proportion has remained relatively stable since 2008 but numbers have risen by 12 per cent from 2008 – similarly this reflects the overall rise in the number of looked after children.

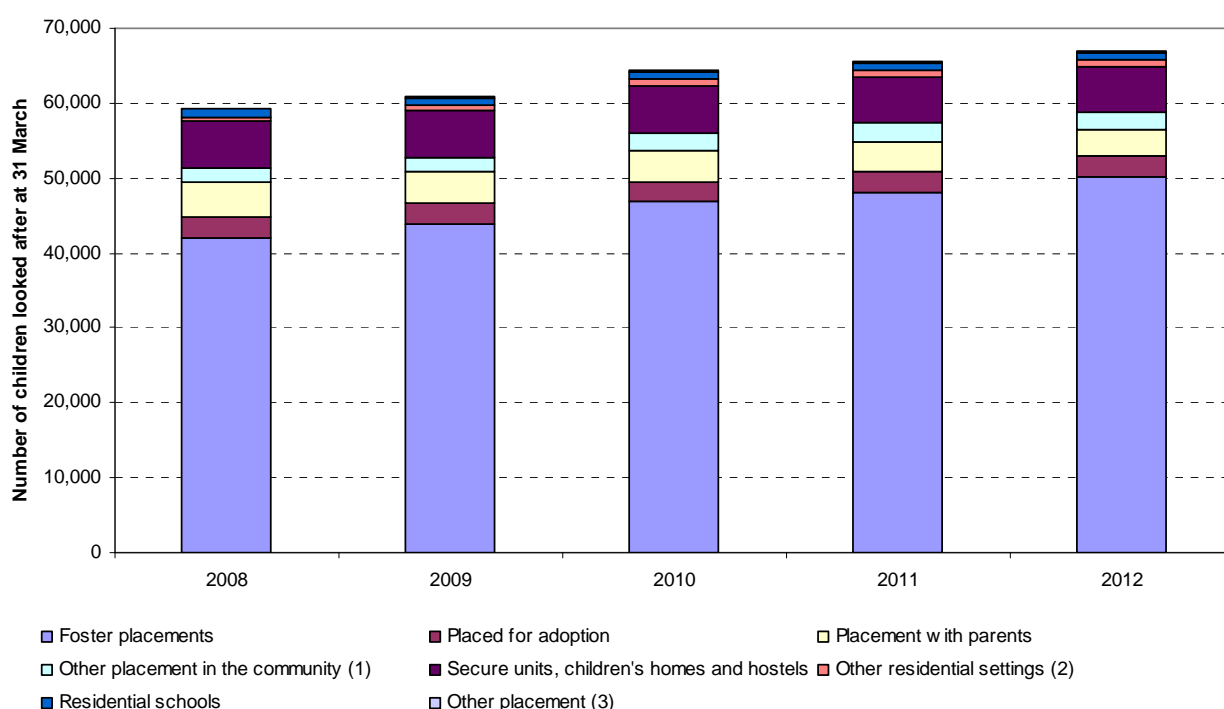
Of children looked after at 31 March 2012, 50,260 were cared for in a foster placement, this represents 75 per cent of all children looked after at 31 March 2012. The percentage of children

looked after placed in foster care has increased slightly each year since 2008 when the percentage of looked after children cared for in foster placements was 71 per cent.

There were 5,930 looked after children cared for in secure units, children’s homes and hostels, 9 per cent of all children looked after – a decrease from 10 per cent in 2008. There were 3,600 children looked after placed with their parents, this represents 5 per cent of children looked after - a decrease from 8 per cent in 2008.

There were 2,680 looked after children placed for adoption at 31 March 2012. This is a decrease of 1 per cent from 2011 and a decrease of 6 per cent from 2008. Figure 2 shows the trends in placements from 2008 to 2012.

**Figure 2: Children looked after at 31 March by placement type**



1. Includes children living independently and in residential employment
2. Includes residential care homes, NHS trusts, Family centres or young offenders' institutions.
3. Includes looked after children missing from their agreed placement for 24 hours or more.

Of all children looked after at 31 March 2012, 67 per cent (44,760) had only one placement during the year, 22 per cent had two placements during the year and 11 per cent had three or more placements. The percentage of looked after children with only 1 placement during the year has increased slightly from 2008 when the figure was 65 per cent, and from 2011 when the figure was 66 per cent.

### Children who started to be looked after during the year ending 31 March 2012

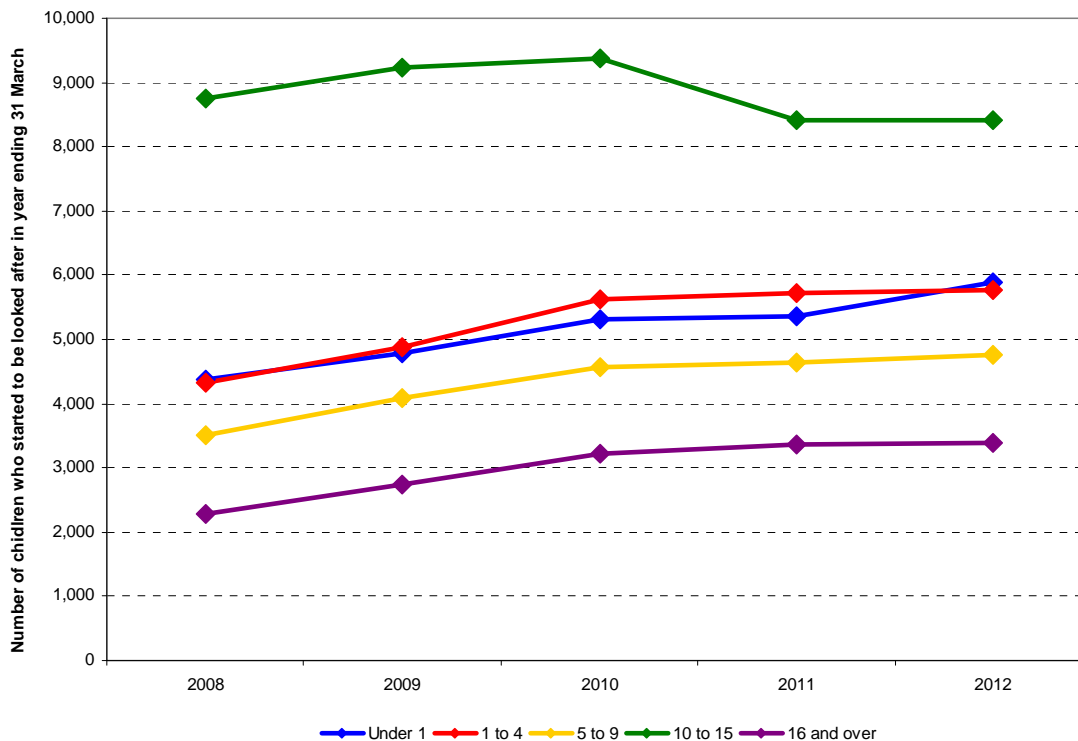
There were 28,220 children who started to be looked after during the year ending 31 March 2012, an increase of 3 per cent from the previous year’s figure of 27,500 and an increase of 21 per cent from 2008.

Much of the increase in 2012 is accounted for by the rise in the number of children aged under 1 who started to be looked after. In the year ending 31 March 2012, 5,880 children in this age group started to be looked after. This represents an increase of 10 per cent from 2011. For the older age groups only small increases are shown in the numbers of children who started to be looked after between 2011 and 2012:

- 5,770 children aged between 1 and 4 started to be looked after during the year ending 31 March 2012, an increase of 1 per cent from 2011.
- 4,760 children aged between 5 and 9 started to be looked after during 2012, an increase of 2 per cent from 2011.
- 8,420 children aged between 10 and 15 started to be looked after during 2012, a similar figure to 2011. In the year prior to this there was a 10 per cent fall in the number of children in this age group who started to be looked after.
- 3,400 children aged 16 and over started to be looked after during 2012, a small rise of 1 per cent from 2011.

Figure 3 shows the numbers of children who started to be looked after, for each age group, during the year ending 31 March.

**Figure 3: Age of children on starting to be looked after, 2008 to 2012**



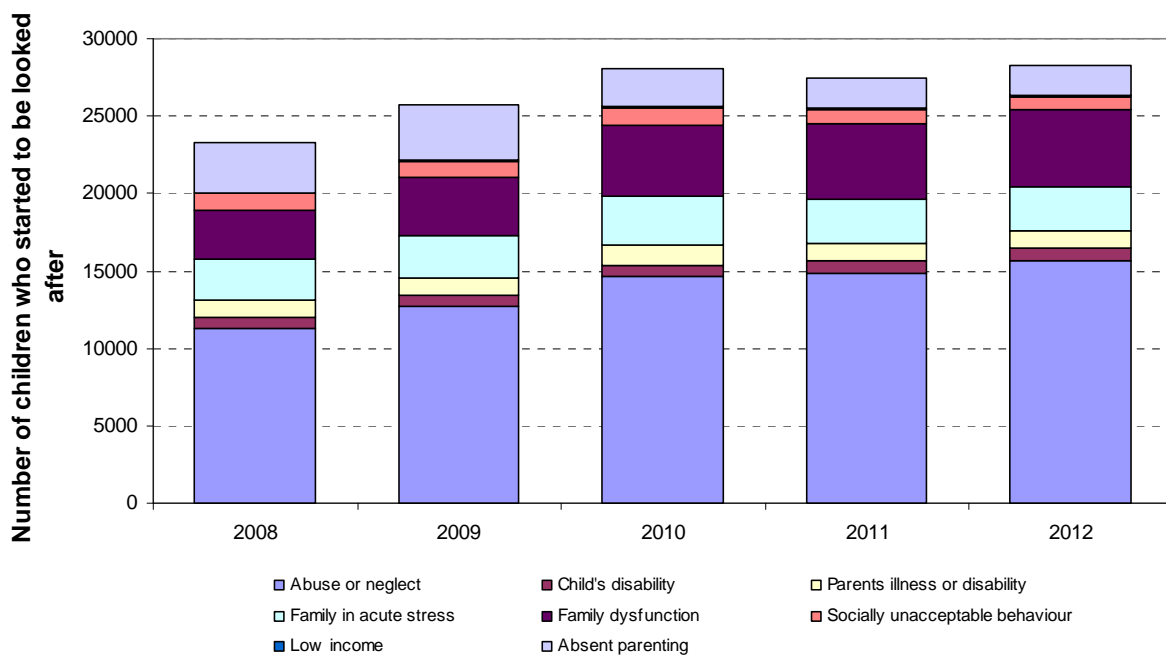
Of all children who started to be looked after during the year ending 31 March 2012, 56 per cent were children provided with a service due to abuse or neglect, up from 48 per cent in 2008. The number of children starting to be provided with a service due to abuse or neglect has risen to 15,670 in 2012 – an increase of 39 per cent from 2008.

The second most frequent reason for a child to start being provided with a service was family dysfunction. This represents 18 per cent of all children who started to be looked after during the year ending 31 March 2012 – an increase from 13 per cent in 2008. The numbers who were provided with a service due to family dysfunction have increased steadily in each year since 2008. In 2012 5,010 children started to be provided with a service for this reason – a rise of 60 per cent from 2008.

The percentage of children who started to be looked after due to absent parenting has decreased, from 14 per cent in 2008 to 7 per cent in both 2011 and in 2012. The number of children who started to be looked after due to absent parenting has fallen from 3,180 in 2008 to 1,880 in 2012. Previous releases have shown that this fall is connected with the fall in looked after children who are unaccompanied asylum seekers. Information on the number of unaccompanied asylum seeking children looked after at 31 March 2012 by gender, age, category of need and ethnic origin will be published as an additional table to this release, on 29 November.

Figure 4 shows the reason why children who started to be looked after were provided with a service for each year since 2008.

**Figure 4: Category of need of children who started to be looked after during the year ending 31 March**



**Children who ceased to be looked after during the year ending 31 March 2012**

There were 27,350 children who ceased to be looked after during the year ending 31 March 2012. This is a small increase of 1 per cent from 2011 and an increase of 12 per cent from 2008.

By age group:

- 1,430 children aged under 1 ceased to be looked after during the year ending 31 March 2012, an increase of 7 per cent compared to 2008.
- 6,940 children aged between 1 and 4 ceased to be looked after during the same period, an

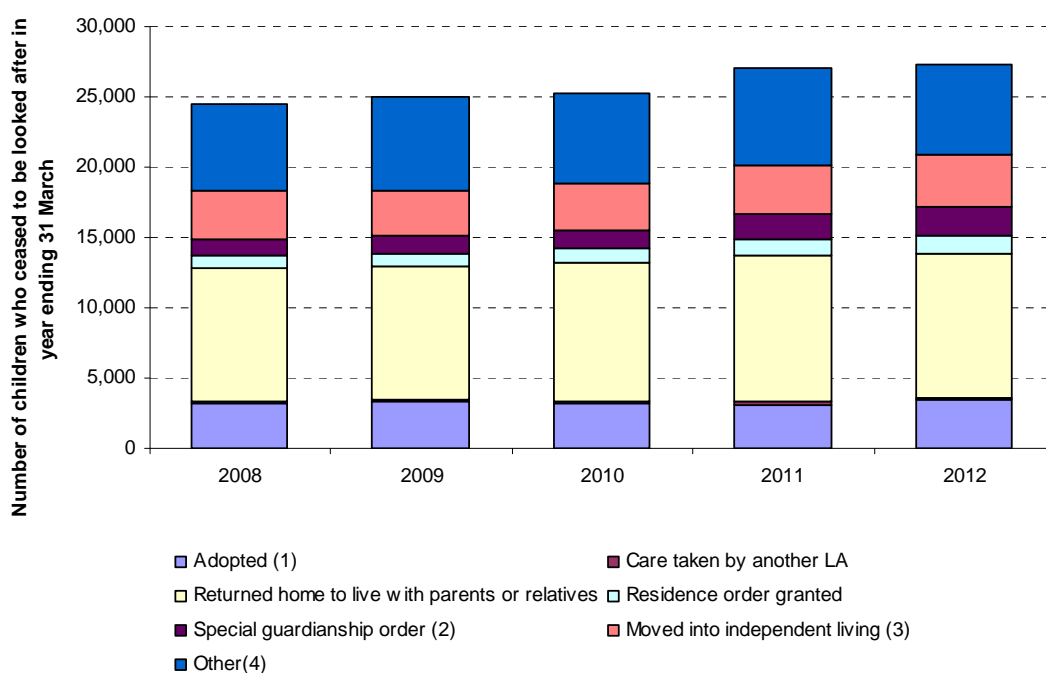
increase of 26 per cent from 2008

- 3,790 children aged between 5 and 9 ceased to be looked after during 2012, an increase of 17 per cent from 2008
- 5,200 children aged between 10 and 15 ceased to be looked after during 2012, a decrease of 12 per cent from 2008. The numbers of children in this age group ceasing to be looked after have decreased each year since 2008. This is consistent with the general trend for children to leave care at a later age.
- 10,000 children aged 16 and over ceased to be looked after during 2012, an increase of 18 per cent from 2008

In 2012 the most common reason why a child ceased to be looked after is because they returned to parents or relatives. Some 37 per cent of children ceasing care in 2012 returned home to parents or relatives, a small decrease from 2008 when the figure was 39 per cent.

Figure 5 shows the reasons why a child ceased to be looked after during the year ending 31 March.

**Figure 5: Reason why a child ceased to be looked after during the year ending 31 March**



1. Includes both adoptions where the application unopposed and where consent dispensed with.
2. Includes special guardianship orders made to former foster carers and to carers other than former foster carers.
3. Includes both supportive living and living with no formalised support.
4. Includes children who died, moved to the care of another LA, who transferred to residential care or were sentenced to custody. Also includes children whose reason for ceasing care is recorded as other.

### Looked after children who were adopted during the year ending 31 March 2012

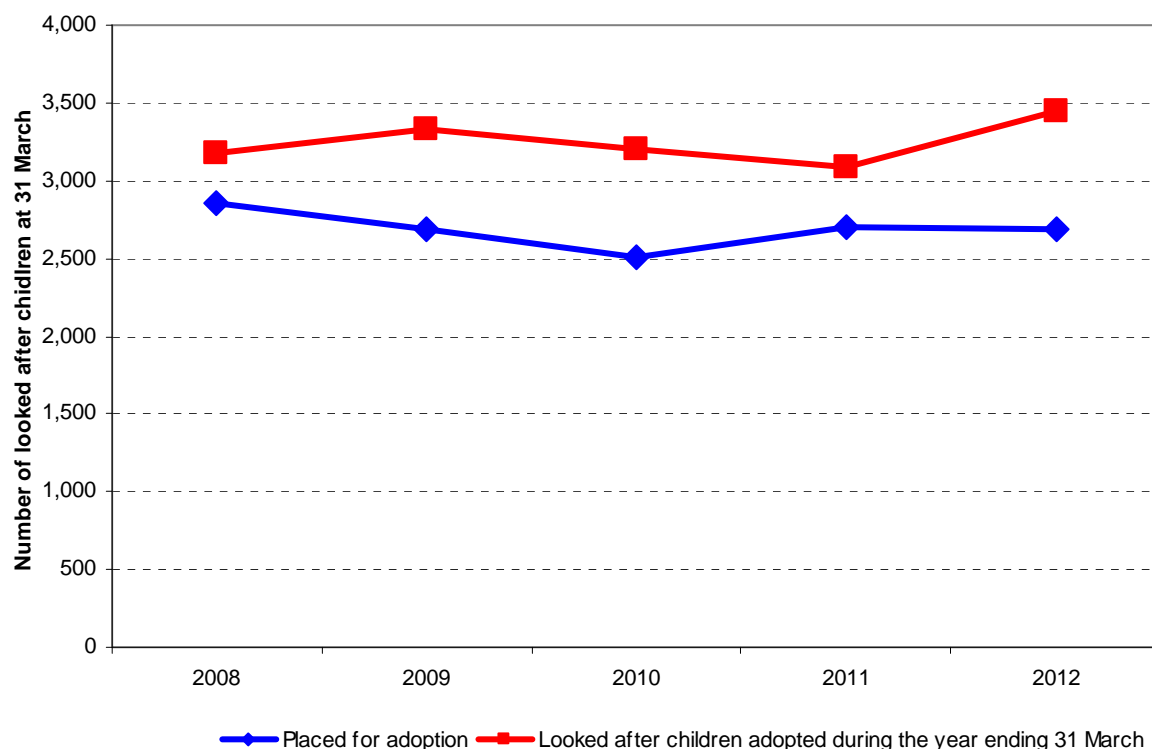
There were 3,450 looked after children adopted during the year ending 31 March 2012, an increase of 12 per cent from the 2011 figure and an increase of 9 per cent from 2008. The number

of looked after children adopted during the year fell each year between 2009 and 2011 but was higher in 2012 than in any year since 2006.

This rise in the number of looked after children who were adopted in 2012 reflects the rise in the number of looked after children who were placed for adoption between 2010 and 2011.

The number of looked after children placed for adoption increased from 2,510 in 2010 to 2,710 in 2011. However it decreased in 2012 to 2,680 – the same number as in 2009. It is therefore likely that the number of looked after children adopted will fall again in 2013. Figure 6 shows the number of looked after children placed for adoption and the number adopted in each year since 2008.

**Figure 6: The number of looked after children placed for adoption and the number adopted during the year ending 31 March.**



The number of looked after children who were under 1 year old at adoption has decreased over the last 5 years from 110 in 2008 to 70 in 2012, but following a downward trend in recent years, the figure has increased slightly in the latest year. The majority of adopted children are aged between 1 and 4 years at adoption. Of all looked after children adopted, 74 per cent are in this age group with the average age at adoption being 3 years and 8 months.

The length of the average final period of care for looked after children adopted is 2 years, 7 months. This figure has been fairly stable since 2008.

In younger children the process was generally shorter. For children aged less than 1 year (on first entering care) the average length of the adoption process was 2 years and 3 months while for children aged 6 (when first entering care) the average length of the process was 3 years and 11 months. The average length of time for the adoption process in children aged under 1 when

entering care has not significantly changed since 2009. For older children (those aged 6 when entering care) the process has lengthened since 2009 when the average time was 3 years and 6 months.

2,130 children ceased to be looked after due to Special Guardianship Orders. Special Guardianship Orders were introduced in 2005. The number of these has increased by 20 per cent from 2011 and by 88 per cent since 2008. The majority of Special Guardianship Orders are made to former foster carers; these account for 62 per cent of all Special Guardianship Orders made.

### **Children now aged 19 years old who were looked after when aged 16 years**

As part of the return, local authorities also provide the Department with information about the cohort of children who have turned 19 this year having been looked after aged 16. The number of children now aged 19 years who were looked after when aged 16 years is 6,610.

Of these young people, 2,390 (36 per cent) are not in education, employment or training. For 300 of these young people this is due to illness or disability, for 2,090 this is due to other reasons. The percentage of care leavers falling into this latter group is now 32 per cent. This is the highest percentage since 2008 when it was 24 per cent.

There are 430 young people now aged 19 years who are in higher education, an increase from the 2011 figure of 390 but still lower than the number who were in higher education in 2010. This figure represents 7 per cent of all former care leavers. In addition 1,880 young people of this cohort are in education other than higher, with a further 1,510 in training or employment. This represents 28 per cent and 23 per cent respectively of all young people now aged 19 who were looked after when aged 16. These figures are both lower than those reported in 2011.

Most young people now aged 19 years who were looked after when aged 16 years are accommodated in independent living arrangements (40 per cent). This percentage has decreased slightly over the last 4 years. The majority (88 per cent) of young people now aged 19 who were looked after when aged 16 are classed as being in suitable accommodation (see Technical Note 9). There were 320 young people living with their former foster carers, this represents 5 per cent of this cohort of young people.

### **Children missing from their agreed placement**

As part of their SSSDA903 return, local authorities record all children missing from their agreed placement for 24 hours or more. The number of children missing from their agreed placement for 24 hours or more at 31 March is shown in table A3 and the number of children with missing incidents in the year ending 31 March is shown in table B1. Comparisons with other data indicate that the figures presented in this publication may be an undercount of the true figure. Work is currently being undertaken to look at improving the quality of the data returned by local authorities in this area in future. For further information see Technical Note 11.



## **LIST OF TABLES**

### **Children looked after at 31 March 2012**

- Table A1: Children looked after at 31 March by gender, age at 31 March, category of need, and ethnic origin, 2008 to 2012
- Table A2: Children looked after at 31 March by legal status, 2008 to 2012
- Table A3: Children looked after at 31 March by placement, 2008 to 2012
- Table LAA1: Children looked after at 31 March, by Local Authority, 2008 to 2012

### **Children looked after during the year ending 31 March 2012**

- Table B1: Children looked after at any time during the year ending 31 March, by gender, age at 31 March, category of need, placement and ethnic origin, 2008 to 2012

### **Children who started to be looked after during the year ending 31 March 2012**

- Table C1: Children who started to be looked after during the years ending 31 March by gender, age on starting, category of need and ethnic origin, 2008 to 2012
- Table LAC1: Children who started to be looked after and the number taken into care during the years ending 31 March, by Local Authority, 2008 to 2012

### **Children who ceased to be looked after during the year ending 31 March 2012**

- Table D1: Children who ceased to be looked after during the years ending 31 March by gender, age on ceasing, reason episode ceased, category of need and ethnic origin, 2008 to 2012
- Table LAD1: Children who ceased to be looked after during the years ending 31 March, by Local Authority, 2008 to 2012

### **Children looked after who were adopted during the year ending 31 March 2012**

- Table E1: Looked after children who were adopted during the years ending 31 March by gender, age at adoption, ethnic origin, category of need, final legal status, duration of final period of care and age on starting final period of care, 2008 to 2012
- Table E2: Children looked after who were adopted during the year ending 31 March by average time between the different stages of the adoption process and age at start of period of care, 2009 to 2012
- Table LAE1: Looked after children who were adopted during the years ending 31 March, by Local

Authority, 2008 to 2012

### **Children now aged 19 years who were looked after on 1 April then aged 16 years**

Table F1: Children now aged 19 years old who were looked after when aged 16 years by gender, activity and accommodation, 2008 to 2012

### **Additional Information**

Further information on looked after children, including detailed Local Authority level analysis was released on 12 December 2012, this is arranged into 5 themes:

- Children looked after at 31 March
- Children who started to be looked after during the year ending 31 March
- Children who ceased to be looked after during the year ending 31 March
- Children looked after who were adopted during the year ending 31 March
- Children now aged 19 years who were looked after on 1 April then aged 16

The additional information will be published on 29 November 2012. A full schedule showing which tables are included under each theme and their publication date is shown on the web site for this publication. This can be accessed at:

<http://www.education.gov.uk/researchandstatistics/statistics/statistics-by-topic/a00213762/children-looked-after-las-england>

The data underlying this release will be published on the same date.

Tables A1 and LAA1 will also be re-published on this date. The tables usually includes rates of looked after children per 10,000 children under 18 years. Population estimates based on the 2011 census are currently being prepared and these new estimates will be used in all rate calculations.

Table B1 will also be re-published and will include information on children looked after continuously for 12 months at 31 March.

Information on outcomes for looked after children will be published in December. This will include information on educational attainment, exclusions and absence from school, cautions and convictions, health and substance misuse of looked after children. It will also include information on the emotional and behavioural health of looked after children (SDQ scores).

## TECHNICAL NOTES

### Data Collection

1. The 2011-12 figures for looked after children are the latest in a regular series. Data are collected on the SSDA903 return, which provides the Department for Education with data on looked after children in England. It also covers adoptions of looked after children, the activity of former care leavers aged 19, and information on looked after children eligible for pupil premium.
2. All references made to “year” relate to the standard financial year which runs from 1 April to 31 March (for example 2012 should be understood as 1 April 2011 to 31 March 2012).
3. The figures presented for the year ending 31 March 2012 are based on data reported by all 152 local authorities in England, with the exception of Isles of Scilly who are not required to submit a return as they do not have any looked after children within their care.
4. The database used to collect this information is longitudinal with one record for every child. As local authorities are continually updating the database every year, previous years’ figures have also been amended where there have been changes (see footnotes on historical changes in the relevant tables). The information collected contains details about the child (for example gender, date of birth, unique pupil number) and details about the child’s episodes in care (for example category of need, legal status under which the child is looked after and type of placement). When a change in legal status or placement (or both) occurs, a new episode of care is started and the date and reason for the change are recorded. Information is supplied to the Department for Education annually, and these records are then linked (by a unique identifier for each child) to any supplied by the same local authority in preceding years (from 1992 onwards).
5. Between 1997-98 and 2002-03 local authorities were required to submit a CLA100 return along with the SSDA903 return. The CLA100 was an aggregate return completed for all children looked after at 31 March while the SSDA903 was a one-in-three sample survey. From year ending 31 March 2004, the SSDA903 covered all children looked after and so the CLA100 was not required. Between 1997-98 and 2002-03, the AD1 return was completed for all children looked after who were adopted during the year; the OC1 return collected data on the qualifications achieved at the point of leaving care for young people leaving care in the year aged 16 and over; and the OC3 return collected data on the activity and accommodation of former care leavers at age 19 who were looked after on 1 April aged 16 years old (in their 17th year). From year ending 31 March 2004, these returns were collected as part of the SSDA903 data collection and so are not referred to as such anymore.
6. Further information on the data items collected in this return can be found in the guidance notes. This and other documents useful for the completion of the SSDA903 return can be found on the DfE children’s statistical returns website at:  
<http://www.education.gov.uk/researchandstatistics/statisticalreturns/childrenlar/>
7. Some of the information previously collected via the Outcome Indicators (OC2) return for children looked after continuously for at least 12 months at 31 March was added to the SSDA903 for the first time in 2008-09. The information collected included data on offending, health promotion checks, immunisations, dental checks, health assessments, substance misuse problem identification and intervention, and position and activity after year 11. This will form part of the Outcomes for Looked After Children Statistical First Release which will be published in December.

8. Children taken into care is defined as children who started to be looked after under a care order (full or interim), or who are detained on child protection grounds (police protection, emergency protection orders or child assessment orders).
9. Table F1 presents information on the numbers of care leavers not in suitable accommodation. Regulation 9(2) of the *Care Leavers Regulations* defines what is meant by 'Suitable accommodation'. It is accommodation, which, so far as reasonably practicable, is suitable for the child in light of his/her needs, including his/her health needs. The authority should have satisfied itself as to the character and suitability of the landlord or other provider; ensures that the accommodation complies with health and safety requirements related to rented accommodation; and that the authority has so far as reasonably practicable, taken into account the child's wishes and feelings; and education, training or employment needs. Further information can be found at: <http://media.education.gov.uk/assets/files/pdf/v/volume%203%20planning%20transition%20to%20adulthood%20for%20care%20leavers.pdf>
10. The number of looked after children at 31 March 2012 (table A1) does not equate to the number at 31 March 2011 plus the number who started (table C1) minus the number who ceased to be looked after in the year (table D1). The reason for this is that a child is only ever counted once as starting to be looked after during the year, and once as ceasing to be looked after during the year, but in some circumstances a child may enter care and/or leave care more than once during the year. There are also a small number of children who move in and out of respite care during the year for whom the same will apply.

## Data quality

11. Data on children missing from their placement are presented in this publication in tables A3 and B1. Comparisons with other data sources, including numbers of missing children reported to the police, indicate that the figures presented in this publication may be an undercount of the true figure and should be treated with caution. Work is currently being undertaken to look at improving the quality of the data returned by local authorities in this area in future.
12. The 2012 data shows that there are still children subject to freeing orders even though applications for freeing orders could not be made on or after 30 December 2005 as they were replaced by placement orders. Such high numbers of children subject to freeing orders six years after they have come to an end are not expected. Further guidance on the use of freeing orders has been included in our guidance notes.
13. Grossing Factors have been applied to the data in order to compensate for records with errors in their episodes. Further information about the grossing methodology used can be found in the methodology document at: <http://www.education.gov.uk/rsgateway/DB/SFR/s001084/index.shtml>
14. This publication is produced using a final version of the 2012 dataset and we do not plan to make any revisions to this publication. If we later discover that a revision is necessary, this will be made in accordance with our revisions policy which is published at: <http://www.education.gov.uk/researchandstatistics/statistics/nationalstatistics/a00196924>

## Local Authority Reorganisation

15. Bedford Borough, Central Bedfordshire, Cheshire East and Cheshire West and Chester were formed in the reorganisation of Bedfordshire and Cheshire on 1 April 2009. These

local authorities supplied the Department with information indicating which local authority had taken over responsibility regarding children looked after at 31 March 2009 and children now aged 19 years who were looked after on 1 April 2007 then aged 16 years.

## **Rounding Conventions**

16. The National Statistics Code of Practice requires that reasonable steps should be taken to ensure that all published or disseminated statistics produced by the Department for Education protect confidentiality. Figures have been rounded to the nearest 10, Local Authority figures have been rounded to the nearest 5. For confidentiality purposes, numbers from one to five inclusive have been replaced in the published tables by a cross (x). Where any number is shown as zero (0), the original figure submitted was zero (0). The following convention has been used:

”.” means not applicable

“-“ means negligible – used to represent a percentage below 0.5%

17. Percentages have been rounded to whole numbers but where the numerator was five or less or the denominator was 10 or less, they have been suppressed and replaced by a cross (x). Note that percentages may not sum to 100 due to rounding.

## **Related Publications**

18. Details of statistics on looked after children published by other countries in the UK can be found below.

### ***Scotland***

Children Looked After Statistics are produced annually by the Scottish Government. The most recent data published on 29<sup>th</sup> February 2012 can be found at the following link:

<http://www.scotland.gov.uk/Publications/2012/02/7586>

### ***Wales***

Statistics on Children Looked After in Wales are produced annually by the Local Government Data Unit and the Welsh Assembly Government. Data for the period up to the end of March 2012 will be released on 27<sup>th</sup> September 2012 and can be found via the following link:

<http://wales.gov.uk/topics/statistics/du/du-month/sept/?jsessionid=mhGBQWncScGj6971kr9Mb1hIMTC4t4JY1pqdJCx2tJHQBCnJDLZV!1219044931?lang=en>

### ***Northern Ireland:***

The Children Order Statistical Bulletin and Children Order Statistical Tables are produced by the Department of Health, Social Services and Public Safety and include information on

looked after children in Northern Ireland. The most recent data published in 30<sup>th</sup> June 2012 can be found at the following link:

[http://www.dhsspsni.gov.uk/index/stats\\_research/stats-cib/statistics\\_and\\_research-cib-pub/children\\_statistics/children\\_order\\_quarterly.htm](http://www.dhsspsni.gov.uk/index/stats_research/stats-cib/statistics_and_research-cib-pub/children_statistics/children_order_quarterly.htm)

### **England:**

Information on referrals, assessments and children who were the subject of a child protection plan (taken from the Children in Need census) will be published at the end of October. Further information can be found at:

<http://www.education.gov.uk/researchandstatistics/statistics/allstatistics>

Information on care proceedings applications made by local authorities where CAFCASS has been appointed by the court to represent the interests of children are published by CAFCASS (Children and Family Court Advisory and Support Service). The latest information covers January 2012 and can be found at:

[http://www.cafcass.gov.uk/publications/care\\_demand\\_statistics.aspx](http://www.cafcass.gov.uk/publications/care_demand_statistics.aspx)

### **A National Statistics publication**

The United Kingdom Statistics Authority has designated these statistics as National Statistics, in accordance with the Statistics and Registration Service Act 2007 and signifying compliance with the Code of Practice for Official Statistics. Designation can be broadly interpreted to mean that the statistics:

- meet identified user needs;
- are well explained and readily accessible;
- are produced according to sound methods, and
- are managed impartially and objectively in the public interest.

Once statistics have been designated as National Statistics it is a statutory requirement that The Code of Practice shall continue to be observed. This publication has been designated as National Statistics following assessment by the United Kingdom Statistics Authority.

### **Looked after children data user group:**

This is a group which aims to seek feedback on whether these statistics are meeting users' requirements and to consult on any future changes to this data collection and the timing and format of our outputs. If you would like to participate in this group then please [register your interest via email](#).

## **ENQUIRIES**

Enquiries about the figures contained in this press release should be addressed to:

Data and Statistics Division  
Department for Education  
Sanctuary Buildings  
Great Smith Street  
LONDON  
SW1P 3BT  
Email: [cla.stats@education.gsi.gov.uk](mailto:cla.stats@education.gsi.gov.uk)

Press enquiries should be made to the Department's Press Office at:

Press Office  
Department for Education  
Sanctuary Buildings  
Great Smith Street  
LONDON  
SW1P 3BT  
Telephone Number: 020 7925 6789

**Table A1: All children looked after at 31 March by gender, age at 31 March, category of need, and ethnic origin<sup>1,2,3</sup>**

Years ending 31 March 2008 to 2012

Coverage: England

rates per 10,000 children under 18 years

	2008	2009	2010	2011	2012					
						numbers and percentages				
	numbers					percentages				
	2008	2009	2010	2011	2012	2008	2009	2010	2011	2012
<b>All children looked after at 31 March<sup>1,2,3</sup></b>	<b>59,380</b>	<b>60,910</b>	<b>64,460</b>	<b>65,520</b>	<b>67,050</b>					
<b>Rates per 10,000 children under 18 years<sup>4</sup></b>	<b>54</b>	<b>55</b>	<b>59</b>	<b>59</b>	<b>59</b>					
<b>All children looked after at 31 March</b>	<b>59,380</b>	<b>60,910</b>	<b>64,460</b>	<b>65,520</b>	<b>67,050</b>	<b>100</b>	<b>100</b>	<b>100</b>	<b>100</b>	<b>100</b>
<b>Gender</b>	<b>59,380</b>	<b>60,910</b>	<b>64,460</b>	<b>65,520</b>	<b>67,050</b>	<b>100</b>	<b>100</b>	<b>100</b>	<b>100</b>	<b>100</b>
Male	33,380	34,580	36,170	36,450	37,020	56	57	56	56	55
Female	26,000	26,330	28,290	29,070	30,030	44	43	44	44	45
<b>Age at 31 March (years)</b>	<b>59,380</b>	<b>60,910</b>	<b>64,460</b>	<b>65,520</b>	<b>67,050</b>	<b>100</b>	<b>100</b>	<b>100</b>	<b>100</b>	<b>100</b>
Under 1	2,900	3,260	3,720	3,680	4,190	5	5	6	6	6
1 to 4	9,010	9,440	10,860	11,980	12,430	15	16	17	18	19
5 to 9	10,380	10,470	11,200	11,830	12,700	17	17	17	18	19
10 to 15	24,930	24,930	24,990	24,180	24,150	42	41	39	37	36
16 and over	12,160	12,810	13,680	13,850	13,580	20	21	21	21	20
<b>Category of need<sup>5</sup></b>	<b>59,380</b>	<b>60,910</b>	<b>64,460</b>	<b>65,520</b>	<b>67,050</b>	<b>100</b>	<b>100</b>	<b>100</b>	<b>100</b>	<b>100</b>
Abuse or neglect	36,780	37,200	39,350	40,440	41,790	62	61	61	62	62
Child's disability	2,290	2,210	2,190	2,170	2,280	4	4	3	3	3
Parents illness or disability	2,760	2,700	2,830	2,710	2,680	5	4	4	4	4
Family in acute stress	4,900	5,310	5,790	5,860	6,000	8	9	9	9	9
Family dysfunction	6,320	6,830	8,020	8,920	9,530	11	11	12	14	14
Socially unacceptable behaviour	1,170	1,210	1,280	1,210	1,150	2	2	2	2	2
Low income	120	140	170	150	120	-	-	-	-	-
Absent parenting	5,040	5,310	4,830	4,060	3,490	8	9	7	6	5
<b>Ethnic origin</b>	<b>59,380</b>	<b>60,910</b>	<b>64,460</b>	<b>65,520</b>	<b>67,050</b>	<b>100</b>	<b>100</b>	<b>100</b>	<b>100</b>	<b>100</b>
<b>White</b>	<b>45,570</b>	<b>46,190</b>	<b>49,010</b>	<b>50,410</b>	<b>52,050</b>	<b>77</b>	<b>76</b>	<b>76</b>	<b>77</b>	<b>78</b>
White British	43,780	44,480	47,180	48,530	49,910	74	73	73	74	74
White Irish	420	390	390	370	330	1	1	1	1	-
Traveller of Irish Heritage <sup>6</sup>	.	30	40	40	50	0	-	-	-	-
Gypsy/Roma <sup>6</sup>	.	30	60	90	120	0	-	-	-	-
Any other White background	1,370	1,260	1,340	1,380	1,640	2	2	2	2	2
<b>Mixed</b>	<b>5,230</b>	<b>5,290</b>	<b>5,640</b>	<b>5,710</b>	<b>5,960</b>	<b>9</b>	<b>9</b>	<b>9</b>	<b>9</b>	<b>9</b>
White and Black Caribbean	2,140	2,150	2,260	2,250	2,250	4	4	4	3	3
White and Black African	500	500	550	620	650	1	1	1	1	1
White and Asian	860	850	950	1,010	1,120	1	1	1	2	2
Any other mixed background	1,740	1,780	1,870	1,840	1,930	3	3	3	3	3
<b>Asian or Asian British</b>	<b>2,810</b>	<b>3,230</b>	<b>3,420</b>	<b>3,120</b>	<b>2,820</b>	<b>5</b>	<b>5</b>	<b>5</b>	<b>5</b>	<b>4</b>
Indian	310	300	320	300	280	1	-	-	-	-
Pakistani	660	670	740	770	760	1	1	1	1	1
Bangladeshi	310	350	410	430	440	1	1	1	1	1
Any other Asian background	1,520	1,900	1,950	1,630	1,350	3	3	3	2	2
<b>Black or Black British</b>	<b>4,460</b>	<b>4,410</b>	<b>4,590</b>	<b>4,560</b>	<b>4,510</b>	<b>8</b>	<b>7</b>	<b>7</b>	<b>7</b>	<b>7</b>
Caribbean	1,600	1,570	1,660	1,630	1,540	3	3	3	2	2
African	2,140	2,100	2,110	2,070	2,100	4	3	3	3	3
Any other Black background	720	750	820	860	870	1	1	1	1	1
<b>Other ethnic groups</b>	<b>1,310</b>	<b>1,660</b>	<b>1,660</b>	<b>1,490</b>	<b>1,290</b>	<b>2</b>	<b>3</b>	<b>3</b>	<b>2</b>	<b>2</b>
Chinese	130	140	130	110	70	-	-	-	-	-
Any other ethnic group	1,180	1,510	1,530	1,380	1,220	2	2	2	2	2
<b>Other</b>	<b>.</b>	<b>140</b>	<b>140</b>	<b>220</b>	<b>430</b>	<b>.</b>	<b>-</b>	<b>-</b>	<b>-</b>	<b>1</b>
Refused <sup>6</sup>	.	10	10	20	30	.	-	-	-	-
Information not yet available <sup>6</sup>	.	130	130	210	400	.	-	-	-	1

Source: SSDA 903

- Numbers have been rounded to the nearest 10. Percentages have been rounded to the nearest whole number. See Technical Notes for more information on rounding.
  - Figures exclude children looked after under an agreed series of short term placements.
  - Historical data may differ from older publications. This is mainly due to the implementation of amendments and corrections sent by some local authorities after the publication date of previous materials.
  - The rates per 10,000 children under 18 years have been derived using the mid-year population estimates for 2011 provided by the Office for National Statistics.
  - The most applicable category of the eight "Need Codes" at the time the child started to be looked after rather than necessarily the entire reason they are looked after.
  - Ethnic origin classification collected for the first time in 2009.
- . Not applicable.  
- Negligible. Percentage below 0.5%



[Back to Contents](#)

**Table A2: Children looked after at 31 March by legal status<sup>1,2,3</sup>**  
**Years ending 31 March 2008 to 2012**  
**Coverage: England**

Legal Status at 31 March	numbers and percentages									
	numbers					percentages				
	2008	2009	2010	2011	2012	2008	2009	2010	2011	2012
<b>All children looked after at 31 March</b>	<b>59,380</b>	<b>60,910</b>	<b>64,460</b>	<b>65,520</b>	<b>67,050</b>	<b>100</b>	<b>100</b>	<b>100</b>	<b>100</b>	<b>100</b>
<b>Care Orders</b>	<b>36,890</b>	<b>36,300</b>	<b>38,200</b>	<b>39,120</b>	<b>40,100</b>	<b>62</b>	<b>60</b>	<b>59</b>	<b>60</b>	<b>60</b>
Interim care orders	8,630	9,280	12,070	13,170	13,500	15	15	19	20	20
Full care orders	28,260	27,020	26,130	25,950	26,610	48	44	41	40	40
<b>Freed for adoption<sup>4</sup></b>	<b>580</b>	<b>410</b>	<b>310</b>	<b>250</b>	<b>210</b>	<b>1</b>	<b>1</b>	-	-	-
<b>Placement Order granted<sup>5</sup></b>	<b>4,450</b>	<b>4,690</b>	<b>5,080</b>	<b>6,240</b>	<b>7,160</b>	<b>7</b>	<b>8</b>	<b>8</b>	<b>10</b>	<b>11</b>
<b>Voluntary agreements under S20 CA 1989 (single placements)</b>	<b>17,260</b>	<b>19,270</b>	<b>20,630</b>	<b>19,730</b>	<b>19,370</b>	<b>29</b>	<b>32</b>	<b>32</b>	<b>30</b>	<b>29</b>
<b>Detained for child protection</b>	<b>30</b>	<b>70</b>	<b>70</b>	<b>30</b>	<b>50</b>	-	-	-	-	-
Police protection	20	30	40	20	30	-	-	-	-	-
Emergency protection orders	10	50	40	10	10	-	-	-	-	-
Under Child Assessment Order	0	0	x	0	0	0	0	x	0	0
<b>Youth Justice legal statuses</b>	<b>180</b>	<b>180</b>	<b>180</b>	<b>150</b>	<b>160</b>	-	-	-	-	-
On remand or committed for trial	170	170	170	140	150	-	-	-	-	-
Detained under PACE <sup>6</sup>	0	0	0	x	0	0	0	0	x	0
Supervision order	10	10	10	10	10	-	-	-	-	-

Source: SSDA903

1. Numbers have been rounded to the nearest 10. Percentages have been rounded to the nearest whole number. See Technical Notes for more information on rounding.
  2. Figures exclude children looked after under an agreed series of short term placements.
  3. Historical data may differ from older publications. This is mainly due to the implementation of amendments and corrections sent by some local authorities after the publication date of previous materials.
  4. No new applications for freeing orders may be made on or after 30 December 2005.
  5. Placement orders came into force on 30 December 2005.
  6. Children detained in local authority accommodation under section 38(6) of the Police and Criminal Evidence Act 1984.
- x Figures not shown in order to protect confidentiality. See Technical Notes for information on data suppression.  
 - Negligible. Percentage below 0.5%

**Table A3: Children looked after at 31 March by placement<sup>1,2,3</sup>**

**Years ending 31 March 2008 to 2012**

**Coverage: England**

numbers and percentages

Placement at 31 March	numbers					percentages				
	2008	2009	2010	2011	2012	2008	2009	2010	2011	2012
<b>All children looked after at 31 March</b>	<b>59,380</b>	<b>60,910</b>	<b>64,460</b>	<b>65,520</b>	<b>67,050</b>	<b>100</b>	<b>100</b>	<b>100</b>	<b>100</b>	<b>100</b>
<b>Foster placements</b>	<b>41,960</b>	<b>43,910</b>	<b>46,890</b>	<b>48,180</b>	<b>50,260</b>	<b>71</b>	<b>72</b>	<b>73</b>	<b>74</b>	<b>75</b>
Foster placement inside Council boundary										
With relative or friend	5,000	4,960	5,320	5,390	5,280	8	8	8	8	8
With other foster carer provided by Council	19,580	19,900	20,520	21,040	21,760	33	33	32	32	32
arranged through agency <sup>4</sup>	2,740	3,320	4,020	4,400	5,180	5	5	6	7	8
Foster placement outside Council boundary										
With relative or friend	1,900	1,940	2,080	2,090	2,090	3	3	3	3	3
With other foster carer provided by Council	5,210	5,750	5,970	5,940	6,050	9	9	9	9	9
arranged through agency <sup>4</sup>	7,530	8,040	8,980	9,320	9,900	13	13	14	14	15
<b>Placed for adoption</b>	<b>2,860</b>	<b>2,680</b>	<b>2,510</b>	<b>2,710</b>	<b>2,680</b>	<b>5</b>	<b>4</b>	<b>4</b>	<b>4</b>	<b>4</b>
Placed for adoption with consent with current foster carer (under S19 AA 2002)	120	70	40	60	50	-	-	-	-	-
Placed for adoption with placement order with current foster carer (under S21 AA 2002)	190	190	220	190	220	-	-	-	-	-
Placed for adoption with consent not with current foster carer (under S19 AA 2002)	590	290	200	230	270	1	-	-	-	-
Placed for adoption with placement order not with current foster carer (under S21 AA 2002)	1,960	2,140	2,060	2,220	2,140	3	4	3	3	3
<b>Placement with parents</b>	<b>4,580</b>	<b>4,170</b>	<b>4,220</b>	<b>3,990</b>	<b>3,600</b>	<b>8</b>	<b>7</b>	<b>7</b>	<b>6</b>	<b>5</b>
<b>Other placement in the community</b>	<b>1,910</b>	<b>2,060</b>	<b>2,440</b>	<b>2,560</b>	<b>2,340</b>	<b>3</b>	<b>3</b>	<b>4</b>	<b>4</b>	<b>3</b>
Living independently	1,910	2,050	2,430	2,560	2,340	3	3	4	4	3
Residential employment	x	x	10	x	0	x	x	-	x	0
<b>Secure units, children's homes and hostels</b>	<b>6,230</b>	<b>6,110</b>	<b>6,230</b>	<b>6,000</b>	<b>5,930</b>	<b>10</b>	<b>10</b>	<b>10</b>	<b>9</b>	<b>9</b>
Secure unit inside Council boundary	20	20	20	20	10	-	-	-	-	-
Secure unit outside Council boundary <sup>5</sup>	160	190	180	140	170	-	-	-	-	-
Homes and hostels subject to Children's Homes regulations										
inside Council boundary	2,900	2,740	2,650	2,630	2,640	5	4	4	4	4
outside Council boundary	2,130	2,170	2,380	2,290	2,250	4	4	4	3	3
Homes and hostels not subject to Children's Homes regulations	1,020	1,000	1,010	920	860	2	2	2	1	1
<b>Other residential settings</b>	<b>570</b>	<b>740</b>	<b>950</b>	<b>960</b>	<b>1,020</b>	<b>1</b>	<b>1</b>	<b>1</b>	<b>1</b>	<b>2</b>
Residential care homes	250	350	510	560	660	-	1	1	1	1
NHS Trust providing medical/nursing care	80	90	110	100	110	-	-	-	-	-
Family centre or mother and baby unit	100	150	200	170	140	-	-	-	-	-
Young offenders institution or prison	140	150	140	140	120	-	-	-	-	-
<b>Residential schools</b>	<b>1,070</b>	<b>1,020</b>	<b>1,010</b>	<b>950</b>	<b>960</b>	<b>2</b>	<b>2</b>	<b>2</b>	<b>1</b>	<b>1</b>
<b>Missing - Absent for more than 24 hours from agreed placement<sup>6</sup></b>	<b>130</b>	<b>120</b>	<b>110</b>	<b>120</b>	<b>140</b>	<b>-</b>	<b>-</b>	<b>-</b>	<b>-</b>	<b>-</b>
In refuge (section 51 of Children Act, 1989)	x	x	x	x	x	x	x	x	x	x
Whereabouts known (not in refuge)	40	30	30	30	30	-	-	-	-	-
Whereabouts unknown	100	90	90	90	110	-	-	-	-	-
<b>Other placement</b>	<b>70</b>	<b>100</b>	<b>90</b>	<b>50</b>	<b>120</b>	<b>-</b>	<b>-</b>	<b>-</b>	<b>-</b>	<b>-</b>
<b>Number of placements during the year<sup>7</sup></b>	<b>59,380</b>	<b>60,910</b>	<b>64,460</b>	<b>65,520</b>	<b>67,050</b>	<b>100</b>	<b>100</b>	<b>100</b>	<b>100</b>	<b>100</b>
1	38,720	40,410	42,220	43,170	44,760	65	66	65	66	67
2	13,640	13,720	14,920	15,130	14,910	23	23	23	23	22
3 or more	7,030	6,780	7,320	7,220	7,380	12	11	11	11	11

Source: SSDA903

1. Numbers have been rounded to the nearest 10. Percentages have been rounded to the nearest whole number. See Technical Notes for more information on rounding

2. Figures exclude children looked after under an agreed series of short term placements

3. Historical data may differ from older publications. This is mainly due to the implementation of amendments and corrections sent by some local authorities after the publication date of previous materials

4. This category includes placement provider codes "Other Local Authority provision", "private provision" and "voluntary/third sector provision" for 2009 to 2011

5. There are currently only 16 secure units operating in England therefore most placements will inevitably be outside the council boundary

6. There is known to be an issue with the quality of data on children recorded as being missing from their agreed placement for a period of 24 hours or more see Technical Note 11.

7. Where a child is subsequently placed for adoption with their existing foster carers, then this is not counted as a placement change.

x Figures not shown in order to protect confidentiality. See Technical Notes for information on data suppression

- Negligible. Percentage below 0.5%

**Table B1: Children looked after at any time during the year ending 31 March and those looked after continuously for at least 12 months at 31 March by gender, age at 31 March, category of need, placement and ethnic origin<sup>1,2,3</sup>**  
**Years ending 31 March 2008 to 2012**  
**Coverage: England**

numbers

	All children looked after during the year ending 31 March					Children looked after during the year ending 31 March for at least 12 months <sup>4</sup>				
	2008	2009	2010	2011	2012	2008	2009	2010	2011	2012
<b>All children looked after during the year</b>										
<b>Gender</b>	<b>82,530</b>	<b>84,330</b>	<b>88,240</b>	<b>91,160</b>	<b>93,020</b>	<b>43,770</b>	<b>42,960</b>	<b>44,290</b>	<b>46,150</b>	<b>46,600</b>
Male	45,820	47,450	49,180	50,250	50,950	24,680	24,350	25,250	26,120	26,190
Female	36,710	36,880	39,060	40,920	42,070	19,090	18,610	19,040	20,030	20,410
<b>Age (years)<sup>5</sup></b>	<b>82,530</b>	<b>84,330</b>	<b>88,240</b>	<b>91,160</b>	<b>93,020</b>	<b>43,770</b>	<b>42,960</b>	<b>44,290</b>	<b>46,150</b>	<b>46,600</b>
Under 1	4,150	4,460	4,890	5,010	5,520	0	x	x	x	0
1 to 4	14,330	15,130	16,560	18,230	19,150	5,700	5,620	6,360	7,410	7,710
5 to 9	13,480	13,590	14,460	15,400	16,320	8,000	7,550	7,790	8,440	9,070
10 to 15	30,050	29,700	29,640	28,900	28,670	19,960	19,370	19,230	19,070	18,870
16 and over	20,520	21,440	22,690	23,630	23,360	10,120	10,420	10,910	11,230	10,950
<b>Category of need<sup>6</sup></b>	<b>82,530</b>	<b>84,330</b>	<b>88,240</b>	<b>91,160</b>	<b>93,020</b>	<b>43,770</b>	<b>42,960</b>	<b>44,290</b>	<b>46,150</b>	<b>46,600</b>
Abuse or neglect	48,400	49,150	51,580	53,920	55,850	28,530	27,730	28,260	29,380	29,950
Child's disability	2,980	2,950	2,920	2,920	2,990	1,790	1,720	1,670	1,640	1,670
Parents illness or disability	4,070	3,900	3,910	3,900	3,760	2,150	2,040	2,030	2,000	1,970
Family in acute stress	7,260	7,550	8,320	8,540	8,560	3,300	3,480	3,720	3,990	4,050
Family dysfunction	9,280	9,860	11,320	12,680	13,740	4,310	4,320	4,710	5,540	5,960
Socially unacceptable behaviour	2,270	2,190	2,190	2,160	1,990	680	650	700	720	700
Low income	170	200	240	270	220	80	90	90	100	80
Absent parenting	8,100	8,530	7,760	6,760	5,910	2,940	2,920	3,120	2,770	2,220
<b>Placement<sup>7</sup></b>	<b>97,710</b>	<b>98,990</b>	<b>103,420</b>	<b>106,920</b>	<b>109,330</b>	<b>43,770</b>	<b>42,960</b>	<b>44,290</b>	<b>46,150</b>	<b>46,600</b>
Foster placements	62,040	63,760	67,680	70,190	72,300	30,180	30,210	31,430	33,120	34,120
Placed for adoption	6,150	6,130	5,790	5,870	6,200	2,680	2,510	2,390	2,570	2,520
Placed with parents	8,600	7,760	7,570	7,700	7,420	3,800	3,320	3,240	3,060	2,780
Placed in the community	4,250	4,710	5,290	5,980	5,970	1,310	1,300	1,530	1,680	1,570
Secure units, children's homes and hostels	11,720	11,600	11,610	11,370	11,050	4,430	4,220	4,220	4,200	4,080
Other residential settings	2,060	2,180	2,750	3,020	3,100	380	430	550	610	640
Residential schools	1,440	1,440	1,400	1,360	1,320	880	850	810	790	760
Missing - Absent for more than 24 hours from agreed placement <sup>8</sup>	1,100	1,040	940	1,040	1,610	90	80	70	70	90
Other placement	360	380	400	380	370	50	50	60	40	50
<b>Ethnic origin</b>	<b>82,530</b>	<b>84,330</b>	<b>88,240</b>	<b>91,160</b>	<b>93,020</b>	<b>43,770</b>	<b>42,960</b>	<b>44,290</b>	<b>46,150</b>	<b>46,600</b>
<b>White</b>	<b>62,000</b>	<b>62,220</b>	<b>65,330</b>	<b>68,290</b>	<b>70,430</b>	<b>34,360</b>	<b>33,590</b>	<b>34,180</b>	<b>35,820</b>	<b>36,480</b>
White British	59,280	59,570	62,550	65,420	67,270	33,120	32,450	33,030	34,530	35,160
White Irish	530	530	520	490	480	330	310	310	300	270
Traveller of Irish Heritage <sup>9</sup>	.	30	60	60	60	.	10	20	30	30
Gypsy/Roma <sup>9</sup>	.	40	100	130	190	.	10	30	50	60
Any other White background	2,190	2,040	2,100	2,190	2,420	910	810	790	900	960
<b>Mixed</b>	<b>7,100</b>	<b>7,180</b>	<b>7,550</b>	<b>7,830</b>	<b>8,130</b>	<b>3,980</b>	<b>3,860</b>	<b>3,920</b>	<b>4,080</b>	<b>4,140</b>
White and Black Caribbean	2,780	2,790	2,940	3,010	3,060	1,680	1,640	1,660	1,660	1,620
White and Black African	680	720	780	860	920	370	360	360	400	440
White and Asian	1,140	1,170	1,220	1,330	1,460	670	620	670	710	750
Any other mixed background	2,490	2,500	2,610	2,630	2,680	1,250	1,240	1,240	1,310	1,320
<b>Asian or Asian British</b>	<b>4,170</b>	<b>4,980</b>	<b>5,190</b>	<b>4,900</b>	<b>4,610</b>	<b>1,640</b>	<b>1,790</b>	<b>2,200</b>	<b>2,160</b>	<b>1,910</b>
Indian	460	470	480	470	460	210	220	210	210	190
Pakistani	960	1,070	1,160	1,150	1,190	480	460	500	530	540
Bangladeshi	480	540	650	660	650	200	200	250	280	290
Any other Asian background	2,270	2,900	2,900	2,630	2,310	740	910	1,240	1,140	890
<b>Black or Black British</b>	<b>7,040</b>	<b>6,930</b>	<b>7,010</b>	<b>7,110</b>	<b>6,920</b>	<b>3,140</b>	<b>2,940</b>	<b>3,030</b>	<b>3,100</b>	<b>3,100</b>
Caribbean	2,240	2,230	2,320	2,320	2,260	1,230	1,140	1,140	1,210	1,130
African	3,610	3,550	3,470	3,500	3,340	1,420	1,310	1,350	1,340	1,380
Any other Black background	1,190	1,150	1,220	1,290	1,310	490	490	540	550	590
<b>Other ethnic groups</b>	<b>2,220</b>	<b>2,760</b>	<b>2,800</b>	<b>2,580</b>	<b>2,270</b>	<b>650</b>	<b>760</b>	<b>910</b>	<b>940</b>	<b>820</b>
Chinese	260	260	250	210	160	60	70	60	60	50
Any other ethnic group	1,960	2,500	2,550	2,370	2,110	590	690	850	890	760
<b>Other</b>	.	<b>260</b>	<b>370</b>	<b>460</b>	<b>680</b>	.	<b>10</b>	<b>50</b>	<b>60</b>	<b>150</b>
Refused <sup>9</sup>	.	20	20	40	50	.	0	10	10	10
Information not yet available <sup>9</sup>	.	240	340	420	630	.	10	50	50	140

Source: SSDA 903

- Numbers have been rounded to the nearest 10. See Technical Notes for more information on rounding.
  - Historical data may differ from older publications. This is mainly due to the implementation of amendments and corrections sent by some local authorities after the publication date of previous materials.
  - Excludes children looked after exclusively under one or more agreed series of short term placements at any time during the years ending 31 March.
  - Data has been grossed to account for invalid records, see Table LAG1.
  - Age at the end of the latest episode of care, or at 31 March if child is still looked after.
  - The most applicable category of the eight "Need Codes" at the time the child started to be looked after rather than necessarily the entire reason they are looked after.
  - The total number of placement types made for each looked after child during the year ending 31 March. For example, if a child has been placed in a foster placement, with parents and also in residential care homes they will appear three times in these figures - once in each category. If a child has had 2 foster placements and 1 placement in a residential care home, they will be counted once under foster care and once under residential care. For children looked after continuously for 12 months only the placement at 31 March is counted.
  - There is known to be an issue with the quality of data on children recorded as being missing from their agreed placement for a period of 24 hours or more. see Technical Note 11.
  - Ethnic origin classification collected for the first time in 2009.
- x Figures not shown in order to protect confidentiality. See Technical Notes for information on data suppression.  
. Not applicable.

**Table C1: Children who started to be looked after during the years ending 31 March by gender, age on starting, category of need and ethnic origin<sup>1,2,3,4</sup>**

**Years ending 31 March 2008 to 2012**

**Coverage: England**

	numbers and percentages									
	numbers					percentages				
	2008	2009	2010	2011	2012	2008	2009	2010	2011	2012
<b>All children who started to be looked after</b>	<b>23,250</b>	<b>25,690</b>	<b>28,100</b>	<b>27,500</b>	<b>28,220</b>	<b>100</b>	<b>100</b>	<b>100</b>	<b>100</b>	<b>100</b>
<b>Gender</b>	<b>23,250</b>	<b>25,690</b>	<b>28,100</b>	<b>27,500</b>	<b>28,220</b>	<b>100</b>	<b>100</b>	<b>100</b>	<b>100</b>	<b>100</b>
Male	12,790	14,450	15,000	14,490	14,880	55	56	53	53	53
Female	10,460	11,230	13,100	13,010	13,340	45	44	47	47	47
<b>Age on starting</b>	<b>23,250</b>	<b>25,690</b>	<b>28,100</b>	<b>27,500</b>	<b>28,220</b>	<b>100</b>	<b>100</b>	<b>100</b>	<b>100</b>	<b>100</b>
Under 1	4,370	4,770	5,320	5,360	5,880	19	19	19	19	21
1 to 4	4,320	4,870	5,610	5,720	5,770	19	19	20	21	20
5 to 9	3,520	4,080	4,580	4,640	4,760	15	16	16	17	17
10 to 15	8,760	9,230	9,360	8,410	8,420	38	36	33	31	30
16 and over	2,290	2,730	3,220	3,370	3,400	10	11	11	12	12
<b>Category of need<sup>5</sup></b>	<b>23,250</b>	<b>25,690</b>	<b>28,100</b>	<b>27,500</b>	<b>28,220</b>	<b>100</b>	<b>100</b>	<b>100</b>	<b>100</b>	<b>100</b>
Abuse or neglect	11,270	12,690	14,670	14,880	15,670	48	49	52	54	56
Child's disability	690	700	730	750	840	3	3	3	3	3
Parents illness or disability	1,160	1,180	1,240	1,100	1,070	5	5	4	4	4
Family in acute stress	2,670	2,770	3,150	2,900	2,850	11	11	11	11	10
Family dysfunction	3,130	3,660	4,660	4,860	5,010	13	14	17	18	18
Socially unacceptable behaviour	1,090	1,080	1,040	940	830	5	4	4	3	3
Low income	60	70	110	110	80	-	-	-	-	-
Absent parenting	3,180	3,540	2,490	1,960	1,880	14	14	9	7	7
<b>Ethnic origin</b>	<b>23,250</b>	<b>25,690</b>	<b>28,100</b>	<b>27,500</b>	<b>28,220</b>	<b>100</b>	<b>100</b>	<b>100</b>	<b>100</b>	<b>100</b>
<b>White</b>	<b>16,160</b>	<b>17,230</b>	<b>19,700</b>	<b>19,860</b>	<b>20,570</b>	<b>70</b>	<b>67</b>	<b>70</b>	<b>72</b>	<b>73</b>
White British	15,270	16,340	18,620	18,810	19,270	66	64	66	68	68
White Irish	130	120	130	110	120	1	-	-	-	-
Traveller of Irish Heritage <sup>5</sup>	.	30	30	20	20	.	-	-	-	-
Gypsy/Roma <sup>6</sup>	.	30	60	60	100	.	-	-	-	-
Any other White background	770	710	870	870	1,060	3	3	3	3	4
<b>Mixed</b>	<b>1,830</b>	<b>2,010</b>	<b>2,320</b>	<b>2,270</b>	<b>2,470</b>	<b>8</b>	<b>8</b>	<b>8</b>	<b>8</b>	<b>9</b>
White and Black Caribbean	630	680	810	780	840	3	3	3	3	3
White and Black African	190	230	290	310	300	1	1	1	1	1
White and Asian	260	320	370	390	460	1	1	1	1	2
Any other mixed background	740	780	850	790	870	3	3	3	3	3
<b>Asian or Asian British</b>	<b>1,850</b>	<b>2,200</b>	<b>1,990</b>	<b>1,520</b>	<b>1,520</b>	<b>8</b>	<b>9</b>	<b>7</b>	<b>6</b>	<b>5</b>
Indian	170	170	180	150	170	1	1	1	1	1
Pakistani	320	410	490	420	420	1	2	2	2	2
Bangladeshi	210	240	310	260	230	1	1	1	1	1
Any other Asian background	1,150	1,390	1,010	700	690	5	5	4	3	2
<b>Black or Black British</b>	<b>2,360</b>	<b>2,530</b>	<b>2,660</b>	<b>2,590</b>	<b>2,410</b>	<b>10</b>	<b>10</b>	<b>9</b>	<b>9</b>	<b>9</b>
Caribbean	620	660	780	690	660	3	3	3	3	2
African	1,300	1,430	1,400	1,410	1,290	6	6	5	5	5
Any other Black background	440	440	490	490	470	2	2	2	2	2
<b>Other ethnic groups</b>	<b>1,050</b>	<b>1,470</b>	<b>1,160</b>	<b>930</b>	<b>790</b>	<b>5</b>	<b>6</b>	<b>4</b>	<b>3</b>	<b>3</b>
Chinese	140	130	110	80	60	1	1	-	-	-
Any other ethnic group	920	1,340	1,050	850	740	4	5	4	3	3
<b>Other</b>	.	<b>250</b>	<b>260</b>	<b>330</b>	<b>450</b>	.	<b>1</b>	<b>1</b>	<b>1</b>	<b>2</b>
Refused <sup>p</sup>	.	20	20	30	30	.	-	-	-	-
Information not yet available <sup>p</sup>	.	230	250	300	430	.	1	1	1	2

Source: SSDA 903

- Numbers have been rounded to the nearest 10. Percentages have been rounded to the nearest whole number. See Technical Notes for more information on rounding.
  - Only the first occasion on which a child started to be looked after in the year has been counted
  - Historical data may differ from older publications. This is mainly due to the implementation of amendments and corrections sent by some local authorities after the publication date of previous materials.
  - Figures exclude children looked after under an agreed series of short term placements
  - The most applicable category of the eight "Need Codes" at the time the child started to be looked after rather than necessarily the entire reason they are looked after.
  - Ethnic origin classification collected for the first time in 2009.
- . Not applicable.  
- Negligible. Percentage below 0.5%

**Table D1: Children who ceased to be looked after during the years ending 31 March by gender, age on ceasing, reason episode ceased category of need and ethnic origin<sup>1,2,3,4</sup>**  
**Years ending 31 March 2008 to 2012**  
**Coverage: England**

	numbers and percentages									
	numbers					percentages				
	2008	2009	2010	2011	2012	2008	2009	2010	2011	2012
<b>All looked after children who ceased to be looked after</b>	<b>24,490</b>	<b>25,020</b>	<b>25,300</b>	<b>27,080</b>	<b>27,350</b>	<b>100</b>	<b>100</b>	<b>100</b>	<b>100</b>	<b>100</b>
<b>Gender</b>	<b>24,490</b>	<b>25,020</b>	<b>25,300</b>	<b>27,080</b>	<b>27,350</b>	<b>100</b>	<b>100</b>	<b>100</b>	<b>100</b>	<b>100</b>
Male	13,140	13,690	13,790	14,530	14,610	54	55	55	54	53
Female	11,350	11,330	11,510	12,550	12,740	46	45	45	46	47
<b>Age on ceasing (years)</b>	<b>24,490</b>	<b>25,020</b>	<b>25,300</b>	<b>27,080</b>	<b>27,350</b>	<b>100</b>	<b>100</b>	<b>100</b>	<b>100</b>	<b>100</b>
Under 1	1,340	1,340	1,280	1,420	1,430	5	5	5	5	5
1 to 4	5,510	5,950	5,930	6,480	6,940	23	24	23	24	25
5 to 9	3,240	3,330	3,450	3,750	3,790	13	13	14	14	14
10 to 15	5,940	5,630	5,450	5,430	5,200	24	23	22	20	19
16 and over	8,460	8,760	9,180	10,000	10,000	35	35	36	37	37
<b>Reason episode ceased</b>	<b>24,490</b>	<b>25,020</b>	<b>25,300</b>	<b>27,080</b>	<b>27,350</b>	<b>100</b>	<b>100</b>	<b>100</b>	<b>100</b>	<b>100</b>
Adopted - application unopposed	1,700	1,780	1,680	1,700	1,890	7	7	7	6	7
Adopted - consent dispensed with	1,460	1,540	1,510	1,380	1,550	6	6	6	5	6
Died	50	50	50	50	40	-	-	-	-	-
Care taken by another LA	190	170	170	200	190	1	1	1	1	1
Returned home to live with parents or relatives	9,530	9,500	9,870	10,430	10,160	39	38	39	39	37
Residence order granted	910	930	1,010	1,190	1,290	4	4	4	4	5
Special guardianship order made to former foster carers	770	810	860	1,140	1,330	3	3	3	4	5
Special guardianship order made to carers other than former foster carers	360	430	430	640	800	1	2	2	2	3
Moved into independent living (with supportive accommodation)	2,470	2,170	2,300	2,410	2,630	10	9	9	9	10
Moved into independent living (with no formalised support)	1,030	1,040	1,050	1,070	1,090	4	4	4	4	4
Transferred to residential care funded by adult social services	480	530	480	470	470	2	2	2	2	2
Sentenced to custody	360	350	320	410	420	1	1	1	2	2
Care ceased for any other reason	5,190	5,720	5,580	5,990	5,500	21	23	22	22	20
<b>Category of need<sup>5</sup></b>	<b>24,490</b>	<b>25,020</b>	<b>25,300</b>	<b>27,080</b>	<b>27,350</b>	<b>100</b>	<b>100</b>	<b>100</b>	<b>100</b>	<b>100</b>
Abuse or neglect	12,150	12,680	12,860	14,110	14,700	50	51	51	52	54
Child's disability	710	770	760	790	740	3	3	3	3	3
Parents illness or disability	1,390	1,270	1,140	1,260	1,120	6	5	4	5	4
Family in acute stress	2,630	2,510	2,800	2,890	2,800	11	10	11	11	10
Family dysfunction	3,220	3,350	3,640	4,120	4,530	13	13	14	15	17
Socially unacceptable behaviour	1,210	1,090	1,020	1,050	910	5	4	4	4	3
Low income	50	70	80	120	100	-	-	-	-	-
Absent parenting	3,130	3,280	3,000	2,750	2,460	13	13	12	10	9
<b>Ethnic origin</b>	<b>24,490</b>	<b>25,020</b>	<b>25,300</b>	<b>27,080</b>	<b>27,350</b>	<b>100</b>	<b>100</b>	<b>100</b>	<b>100</b>	<b>100</b>
<b>White</b>	<b>17,480</b>	<b>17,260</b>	<b>17,470</b>	<b>18,940</b>	<b>19,470</b>	<b>71</b>	<b>69</b>	<b>69</b>	<b>70</b>	<b>71</b>
White British	16,500	16,260	16,470	17,900	18,380	67	65	65	66	67
White Irish	130	150	130	140	150	1	1	1	-	1
Traveller of Irish Heritage <sup>6</sup>	.	10	20	30	20	.	-	-	-	-
Gypsy/Roma <sup>6</sup>	.	10	50	40	80	.	-	-	-	-
Any other White background	850	830	800	840	840	3	3	3	3	3
<b>Mixed</b>	<b>1,980</b>	<b>2,010</b>	<b>2,040</b>	<b>2,250</b>	<b>2,280</b>	<b>8</b>	<b>8</b>	<b>8</b>	<b>8</b>	<b>8</b>
White and Black Caribbean	680	700	730	820	860	3	3	3	3	3
White and Black African	200	230	250	250	270	1	1	1	1	1
White and Asian	300	340	280	350	370	1	1	1	1	1
Any other mixed background	810	750	780	830	790	3	3	3	3	3
<b>Asian or Asian British</b>	<b>1,410</b>	<b>1,820</b>	<b>1,830</b>	<b>1,830</b>	<b>1,840</b>	<b>6</b>	<b>7</b>	<b>7</b>	<b>7</b>	<b>7</b>
Indian	160	170	170	180	190	1	1	1	1	1
Pakistani	310	410	430	390	450	1	2	2	1	2
Bangladeshi	180	210	250	250	220	1	1	1	1	1
Any other Asian background	770	1,020	980	1,010	980	3	4	4	4	4
<b>Black or Black British</b>	<b>2,690</b>	<b>2,670</b>	<b>2,560</b>	<b>2,700</b>	<b>2,510</b>	<b>11</b>	<b>11</b>	<b>10</b>	<b>10</b>	<b>9</b>
Caribbean	700	720	720	740	760	3	3	3	3	3
African	1,500	1,530	1,420	1,500	1,280	6	6	6	6	5
Any other Black background	480	430	420	460	470	2	2	2	2	2
<b>Other Ethnic groups</b>	<b>930</b>	<b>1,130</b>	<b>1,160</b>	<b>1,110</b>	<b>1,000</b>	<b>4</b>	<b>5</b>	<b>5</b>	<b>4</b>	<b>4</b>
Chinese	130	120	120	110	90	1	-	-	-	-
Any other ethnic group	800	1,010	1,040	1,010	910	3	4	4	4	3
<b>Other</b>	.	<b>130</b>	<b>230</b>	<b>240</b>	<b>250</b>	.	<b>1</b>	<b>1</b>	<b>1</b>	<b>1</b>
Refused <sup>6</sup>	.	10	10	20	20	.	-	-	-	-
Information not yet available <sup>6</sup>	.	120	220	220	240	.	-	1	1	1

Source: SSSA 903

- Numbers have been rounded to the nearest 10. Percentages have been rounded to the nearest whole number. See Technical Notes for more information on rounding.
  - Only the last occasion on which a child ceased to be looked after in the year has been counted.
  - Figures exclude children looked after under an agreed series of short term placements.
  - Historical data may differ from older publications. This is mainly due to the implementation of amendments and corrections sent by some local authorities after the publication date of previous materials.
  - The most applicable category of the eight "Need Codes" at the time the child started to be looked after rather than necessarily the entire reason they are looked after.
  - Ethnic origin classification collected for the first time in 2009.
- . Not applicable.  
 - Negligible. Percentage below 0.5%

**Table E1: Looked after children who were adopted during the years ending 31 March by gender, age at adoption, ethnic origin, category of need, final legal status, duration of final period of care and age on starting final period of care<sup>1,2</sup>**

Years ending 31 March 2008 to 2012

Coverage: England

	numbers and percentages									
	numbers					percentages				
	2008	2009	2010	2011	2012	2008	2009	2010	2011	2012
<b>All looked after children at 31 March</b>	<b>59,380</b>	<b>60,910</b>	<b>64,460</b>	<b>65,520</b>	<b>67,050</b>					
<b>All looked after children who were adopted during the year ending 31 March</b>	<b>3,180</b>	<b>3,330</b>	<b>3,200</b>	<b>3,090</b>	<b>3,450</b>	<b>100</b>	<b>100</b>	<b>100</b>	<b>100</b>	<b>100</b>
<b>Gender</b>	<b>3,180</b>	<b>3,330</b>	<b>3,200</b>	<b>3,090</b>	<b>3,450</b>	<b>100</b>	<b>100</b>	<b>100</b>	<b>100</b>	<b>100</b>
Male	1,640	1,680	1,640	1,580	1,740	51	51	51	51	50
Female	1,540	1,640	1,560	1,510	1,710	49	49	49	49	50
<b>Age at adoption (years)</b>	<b>3,180</b>	<b>3,330</b>	<b>3,200</b>	<b>3,090</b>	<b>3,450</b>	<b>100</b>	<b>100</b>	<b>100</b>	<b>100</b>	<b>100</b>
Under 1	110	80	70	60	70	4	3	2	2	2
1 to 4	2,230	2,380	2,250	2,210	2,550	70	72	70	72	74
5 to 9	690	770	770	730	740	22	23	24	24	21
10 to 15	120	80	100	90	80	4	3	3	3	2
16 and over	20	10	10	x	10	1	-	-	x	-
Average age (yrs : months)	3:11	3:9	3:11	3:10	3:8					
<b>Ethnic origin</b>	<b>3,180</b>	<b>3,330</b>	<b>3,200</b>	<b>3,090</b>	<b>3,450</b>	<b>100</b>	<b>100</b>	<b>100</b>	<b>100</b>	<b>100</b>
White	2,640	2,730	2,670	2,600	2,930	83	82	83	84	85
Mixed	330	410	350	320	330	11	12	11	10	10
Asian or Asian British	60	70	50	60	60	2	2	2	2	2
Black or Black British	110	100	100	80	90	4	3	3	2	3
Other ethnic groups	30	20	20	20	30	1	1	1	1	1
Other <sup>3</sup>	.	x	10	20	20	.	x	-	-	1
<b>Category of need<sup>4</sup></b>	<b>3,180</b>	<b>3,330</b>	<b>3,200</b>	<b>3,090</b>	<b>3,450</b>	<b>100</b>	<b>100</b>	<b>100</b>	<b>100</b>	<b>100</b>
Abuse or neglect	2,330	2,410	2,250	2,220	2,490	73	72	70	72	72
Child's disability	20	20	20	10	10	1	1	1	-	-
Parents illness or disability	160	130	120	130	130	5	4	4	4	4
Family in acute stress	220	260	280	240	220	7	8	9	8	6
Family dysfunction	300	360	370	360	460	9	11	12	12	13
Socially unacceptable behaviour	x	10	10	10	20	x	-	-	-	-
Low income	10	x	x	x	10	-	x	x	x	-
Absent parenting	140	140	140	110	110	4	4	4	4	3
<b>Final legal status</b>	<b>3,180</b>	<b>3,330</b>	<b>3,200</b>	<b>3,090</b>	<b>3,450</b>	<b>100</b>	<b>100</b>	<b>100</b>	<b>100</b>	<b>100</b>
Freed for adoption <sup>5</sup>	290	100	40	10	x	9	3	1	-	x
Placement Order <sup>6</sup>	1,990	2,690	2,660	2,590	3,160	63	81	83	84	92
Care order	680	330	320	300	120	21	10	10	10	4
Voluntary agreement (S20)	220	200	180	190	170	7	6	6	6	5
<b>Duration of final period of care<sup>7</sup></b>	<b>3,180</b>	<b>3,330</b>	<b>3,200</b>	<b>3,090</b>	<b>3,450</b>	<b>100</b>	<b>100</b>	<b>100</b>	<b>100</b>	<b>100</b>
Under 1 year	130	100	80	70	90	4	3	2	2	3
1 year to under 2 years	1,220	1,240	1,160	1,110	1,120	38	37	36	36	33
2 years to under 3 years	1,070	1,180	1,180	1,110	1,360	34	35	37	36	39
3 years and over	750	800	780	800	880	24	24	24	26	25
Average duration (yrs : mths)	2:7	2:6	2:7	2:7	2:7					
<b>Age on starting final period of care (years)<sup>7</sup></b>	<b>3,180</b>	<b>3,330</b>	<b>3,200</b>	<b>3,090</b>	<b>3,450</b>	<b>100</b>	<b>100</b>	<b>100</b>	<b>100</b>	<b>100</b>
Under 1	1,950	2,070	1,970	1,940	2,230	61	62	62	63	65
1	380	400	360	360	430	12	12	11	12	12
2	300	330	300	280	310	9	10	9	9	9
3	200	230	240	220	220	6	7	8	7	6
4 and over	350	300	330	290	260	11	9	10	9	7
Average age (yrs : mths)	1:4	1:3	1:4	1:3	1:2					

Source: SSSA 903

1. Numbers have been rounded to the nearest 10. Percentages have been rounded to the nearest whole number. See Technical Notes for more information on rounding.
2. Historical data may differ from older publications. This is mainly due to the implementation of amendments and corrections sent by some local authorities after the publication date of previous materials.
3. "Other" comprises of information refused or not yet available which were collected for the first time in 2009.
4. The most applicable category of the eight "Need Codes" at the time the child started to be looked after rather than necessarily the entire reason they are looked after.
5. No new applications for freeing orders may be made on or after 30 December 2005.
6. Placement orders came into force on 30 December 2005.
7. "Period of care" refers to a continuous period of being looked after, which may include more than one placement or legal status.

x Figures not shown in order to protect confidentiality. See Technical Notes for information on data suppression.

.

- Negligible. Percentage below 0.5%

[Back to Contents](#)

**Table E2: Children looked after who were adopted during the year ending 31 March by average time between the different stages of the adoption process and age at start of period of care<sup>1</sup>**  
**Years ending 31 March 2009 to 2012**  
**Coverage: England**

Age <sup>2</sup>	years : months and numbers																				Children adopted during the year who were placed for adoption within 12 months of an agency decision that the child should be placed for adoption <sup>3,4</sup>						
	Average time between entry into care and decision that child should be placed for adoption				Average time between decision that child should be placed for adoption and matching of child and adopters				Average time between date of matching and date placed for adoption				Average time between date placed for adoption and the date child adopted				Total average time between entry into care and adoption										
	2009	2010	2011	2012	2009	2010	2011	2012	2009	2010	2011	2012	2009	2010	2011	2012	2009	2010	2011	2012	2009	2010	2011	2012	2009	2010	2011
<b>All ages</b>	<b>0:11</b>	<b>0:11</b>	<b>0:11</b>	<b>0:11</b>	<b>0:8</b>	<b>0:9</b>	<b>0:9</b>	<b>0:10</b>	<b>0:1</b>	<b>0:1</b>	<b>0:1</b>	<b>0:1</b>	<b>0:10</b>	<b>0:10</b>	<b>0:10</b>	<b>0:9</b>	<b>2:6</b>	<b>2:7</b>	<b>2:7</b>	<b>2:7</b>	<b>2,510</b>	<b>2,320</b>	<b>2,280</b>	<b>2,480</b>			
aged under 1	0:9	0:9	0:10	0:10	0:7	0:8	0:8	0:8	0:1	0:1	0:1	0:1	0:9	0:9	0:9	0:8	2:2	2:2	2:3	2:3	1,690	1,570	1,590	1,780			
aged 1	1:0	1:1	1:0	1:0	0:9	0:11	0:10	0:11	0:1	0:1	0:1	0:1	0:11	1:0	0:10	0:11	2:10	3:1	2:9	2:11	290	230	260	270			
aged 2	1:1	1:1	1:3	1:1	0:10	0:11	1:0	1:0	0:1	0:1	0:1	0:2	1:0	1:0	1:1	0:10	3:1	3:1	3:5	3:1	210	180	170	180			
aged 3	1:1	1:1	1:1	1:0	1:0	0:11	0:11	1:0	0:1	0:1	0:1	0:1	1:2	1:2	1:1	1:0	3:3	3:3	3:2	3:2	140	150	120	120			
aged 4	1:2	1:0	1:1	1:3	0:11	1:0	1:2	1:1	0:2	0:1	0:1	0:1	1:1	1:2	1:1	1:0	3:5	3:3	3:5	3:5	80	80	60	70			
aged 5	1:2	1:2	1:1	1:4	0:10	1:1	1:3	1:1	0:1	1:1	0:1	0:1	1:1	1:2	1:2	1:2	3:3	3:6	3:7	3:8	50	50	40	40			
aged 6	1:2	1:2	1:1	1:3	0:11	1:0	1:2	1:5	0:2	0:1	0:2	0:1	1:3	1:2	1:4	1:3	3:6	3:6	3:9	3:11	30	30	20	20			
aged 7 and over	1:6	1:8	1:3	1:1	0:11	0:8	0:10	0:11	0:3	0:2	0:4	0:3	0:11	1:1	1:1	1:2	3:8	3:8	3:5	3:5	20	30	20	10			

Source: SSDA 903

1. Historical data may differ from older publications. This is mainly due to the implementation of amendments and corrections sent by some local authorities after the publication date of previous material
2. Age at start of period of care.
3. Numbers have been rounded to the nearest 10. See Technical Notes for more information on rounding
4. Number of children who were placed for adoption within 12 months (i.e. less than 365 days, inclusive of date child was placed for adoption) of the decision that they should be placed for adoption  
 This figure excludes children who were placed within 12 months of the decision that they should be placed for adoption, but whose placement for adoption broke down before being adopted

**Table F1: Children now aged 19 years old who were looked after when aged 16 years by gender, activity and accommodation<sup>1,2,3</sup>**

Years ending 31 March 2008 to 2012

Coverage: England

	numbers and percentages									
	numbers					percentages				
	2008 <sup>4</sup>	2009 <sup>5</sup>	2010 <sup>6</sup>	2011 <sup>7</sup>	2012 <sup>8</sup>	2008 <sup>4</sup>	2009 <sup>5</sup>	2010 <sup>6</sup>	2011 <sup>7</sup>	2012 <sup>8</sup>
<b>All children now aged 19 years old who were looked after on 1 April 2005 to 2009 then aged 16 years old</b>	<b>5,840</b>	<b>6,090</b>	<b>6,200</b>	<b>6,290</b>	<b>6,610</b>	<b>100</b>	<b>100</b>	<b>100</b>	<b>100</b>	<b>100</b>
Unaccompanied asylum seeking children now aged 19 years old who were looked after on 1 April 2005 to 2009 then aged 16 years old	270	370	180	200	160	5	6	3	3	2
<b>Gender</b>	<b>5,840</b>	<b>6,090</b>	<b>6,200</b>	<b>6,290</b>	<b>6,610</b>	<b>100</b>	<b>100</b>	<b>100</b>	<b>100</b>	<b>100</b>
Male	3,320	3,390	3,550	3,700	3,910	57	56	57	59	59
Female	2,520	2,700	2,660	2,590	2,700	43	44	43	41	41
<b>Activity</b>	<b>5,840</b>	<b>6,090</b>	<b>6,200</b>	<b>6,290</b>	<b>6,610</b>	<b>100</b>	<b>100</b>	<b>100</b>	<b>100</b>	<b>100</b>
<b>In higher education i.e. studies beyond A level</b>	<b>390</b>	<b>420</b>	<b>460</b>	<b>390</b>	<b>430</b>	<b>7</b>	<b>7</b>	<b>7</b>	<b>6</b>	<b>7</b>
Full time	370	400	430	380	420	6	7	7	6	6
Part time	20	20	20	20	20	-	-	-	-	-
<b>In education other than higher education</b>	<b>1,610</b>	<b>1,580</b>	<b>1,860</b>	<b>1,900</b>	<b>1,880</b>	<b>28</b>	<b>26</b>	<b>30</b>	<b>30</b>	<b>28</b>
Full time	1,430	1,390	1,620	1,680	1,630	24	23	26	27	25
Part time	180	190	240	230	250	3	3	4	4	4
<b>In training or employment</b>	<b>1,790</b>	<b>1,840</b>	<b>1,530</b>	<b>1,560</b>	<b>1,510</b>	<b>31</b>	<b>30</b>	<b>25</b>	<b>25</b>	<b>23</b>
Full time	1,280	1,290	1,020	1,030	970	22	21	16	16	15
Part time	510	540	510	530	550	9	9	8	8	8
<b>Not in education, training or employment owing to illness or disability</b>	<b>270</b>	<b>300</b>	<b>290</b>	<b>270</b>	<b>300</b>	<b>5</b>	<b>5</b>	<b>5</b>	<b>4</b>	<b>5</b>
<b>Not in education, training or employment owing to other reasons</b>	<b>1,400</b>	<b>1,610</b>	<b>1,720</b>	<b>1,800</b>	<b>2,090</b>	<b>24</b>	<b>26</b>	<b>28</b>	<b>29</b>	<b>32</b>
<b>Not in touch</b>	<b>380</b>	<b>340</b>	<b>350</b>	<b>370</b>	<b>390</b>	<b>6</b>	<b>6</b>	<b>6</b>	<b>6</b>	<b>6</b>
<b>Accommodation<sup>9</sup></b>	<b>5,840</b>	<b>6,090</b>	<b>6,200</b>	<b>6,290</b>	<b>6,610</b>	<b>100</b>	<b>100</b>	<b>100</b>	<b>100</b>	<b>100</b>
With parents or relatives	700	780	730	810	800	12	13	12	13	12
Community home	280	260	290	280	270	5	4	5	4	4
Semi-independent, transitional accommodation	550	550	620	610	660	9	9	10	10	10
Supported lodgings	520	570	640	570	600	9	9	10	9	9
Ordinary lodgings <sup>10</sup>	280	260	280	160	120	5	4	4	3	2
Foyers	90	80	80	100	130	2	1	1	2	2
Independent living	2,450	2,650	2,620	2,550	2,640	42	43	42	41	40
Emergency accommodation	40	30	30	20	30	1	-	1	-	-
Bed and breakfast	50	50	40	30	40	1	1	1	1	1
In custody	180	160	170	200	220	3	3	3	3	3
With former foster carers <sup>11</sup>	.	.	.	230	320	.	.	.	4	5
Other accommodation	340	370	350	340	390	6	6	6	5	6
Not in touch	380	340	350	370	390	6	6	6	6	6
Number in suitable accommodation <sup>12</sup>	5,170	5,450	5,600	5,650	5,840	88	90	90	90	88

Source: SSDA 903

- Numbers have been rounded to the nearest 10. Percentages have been rounded to the nearest whole number. See Technical Notes for more information on rounding.
  - Figures exclude children who were looked after on 1 April aged 16 (in their 17th year) under an agree series of short term placements.
  - Historical data may differ from older publications. This is mainly due to the implementation of amendments and correction sent by some local authorities after the publication date of previous materials.
  - Children now aged 19 years old who were looked after on 1 April 2005 then aged 16 years old (in their 17th year).
  - Children now aged 19 years old who were looked after on 1 April 2006 then aged 16 years old (in their 17th year).
  - Children now aged 19 years old who were looked after on 1 April 2007 then aged 16 years old (in their 17th year).
  - Children now aged 19 years old who were looked after on 1 April 2008 then aged 16 years old (in their 17th year).
  - Children now aged 19 years old who were looked after on 1 April 2009 then aged 16 years old (in their 17th year).
  - This includes accommodation judged both suitable and unsuitable.
  - Note that from 2011, children accommodated in "Ordinary lodgings" no longer included those lodging with former foster carers and so the drop in the figures should be treated with caution.
  - Information on children accommodated with former foster carers was first collected in 2010-11.
  - Regulation 9(2) of the Care Leavers Regulations defines what is meant by 'Suitable accommodation' - see Technical Note 9.
- . Not applicable.  
- Negligible. Percentage below 0.5%