

Status and accountability



Status

Public Health England will be an executive agency of the Department of Health, and will have the operational autonomy to advise Government, local authorities and the NHS in a professionally independent manner.

Public Health England will operate transparently and will provide Government, public health professionals and the public with expert, evidence-based information and advice.

As an executive agency it will be operationally independent. It will demonstrate its transparency through:

- developing its strategic plans through open challenge and review, involving local government, the NHS and the public
- reporting openly on its level of achievement against the specific performance measures set by Government, and on its contribution to the achievement of improvements against the Public Health Outcomes Framework
- proactively publishing its expert scientific and public health advice on relevant issues and its advice to professionals and the public.

Accountability

When Public Health England is established in April 2013, its Chief Executive will:

- be responsible for the day-to-day

operations of Public Health England, including responsibility for delivering its services to a high level

- be the Accounting Officer for the agency, and ensure that processes are in place to ensure the appropriate use of public funds
- report to the Permanent Secretary of the Department of Health.

The Secretary of State for Health will remain ultimately responsible to Parliament for the delivery of the functions for which Public Health England is responsible.

In addition to the reporting structure through the Permanent Secretary, the Chief Executive will be accountable to the Secretary of State for Health and they will meet at least annually to discuss the performance and strategic development of Public Health England.

Governance

The Chief Executive will establish an advisory board to provide external challenge and expertise. This will advise on the running and ongoing development of Public Health England.

Our current intention is that the Chief Executive will chair the Board, which will include at least three non-executive members who will provide independent advice and support.

We expect the non-executive members will





have relevant experience in public health, local government and the voluntary and community or private sector in order to provide a broad range of experience and challenge.

One of the non-executive directors will also chair the agency's audit and risk committee.

The Department of Health will set the legal and policy framework, and secure resources for the public health system, including Public Health England.

The Permanent Secretary will appoint a Departmental Sponsor for Public Health England who will provide the day-to-day contact between the Department of Health and the agency.

The Government's Chief Medical Officer will continue to provide independent

advice to the Secretary of State for Health and the Government on the population's health.

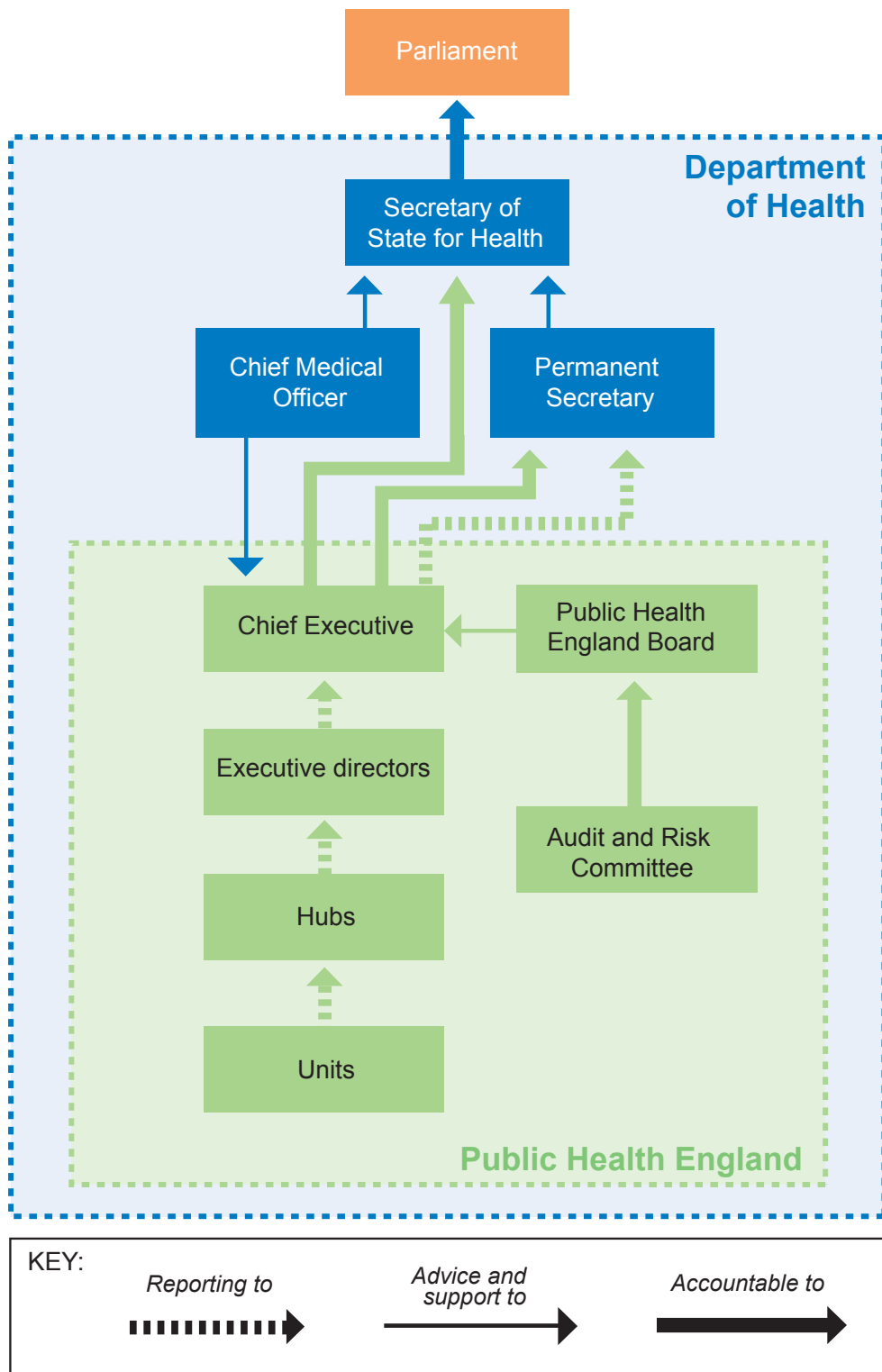
The Chief Medical Officer will be supported in this role by a Public Health Advisory Forum. This will bring together expert professionals and leading partners to assist the Chief Medical Officer in providing quality advice and challenge on public health policy and implementation, including areas such as the Public Health Outcomes Framework.

The diagram shown on the following page sets out the accountability and governance structure for Public Health England that will support its operational freedom.

We will continue to listen closely to the views of stakeholders as we develop our detailed plans for Public Health England.



Public Health England's Operating Model: Status and accountability



Produced: December 2011

Gateway reference: 16912

© Crown copyright 2011
 Produced by the Department of Health
www.dh.gov.uk/publications