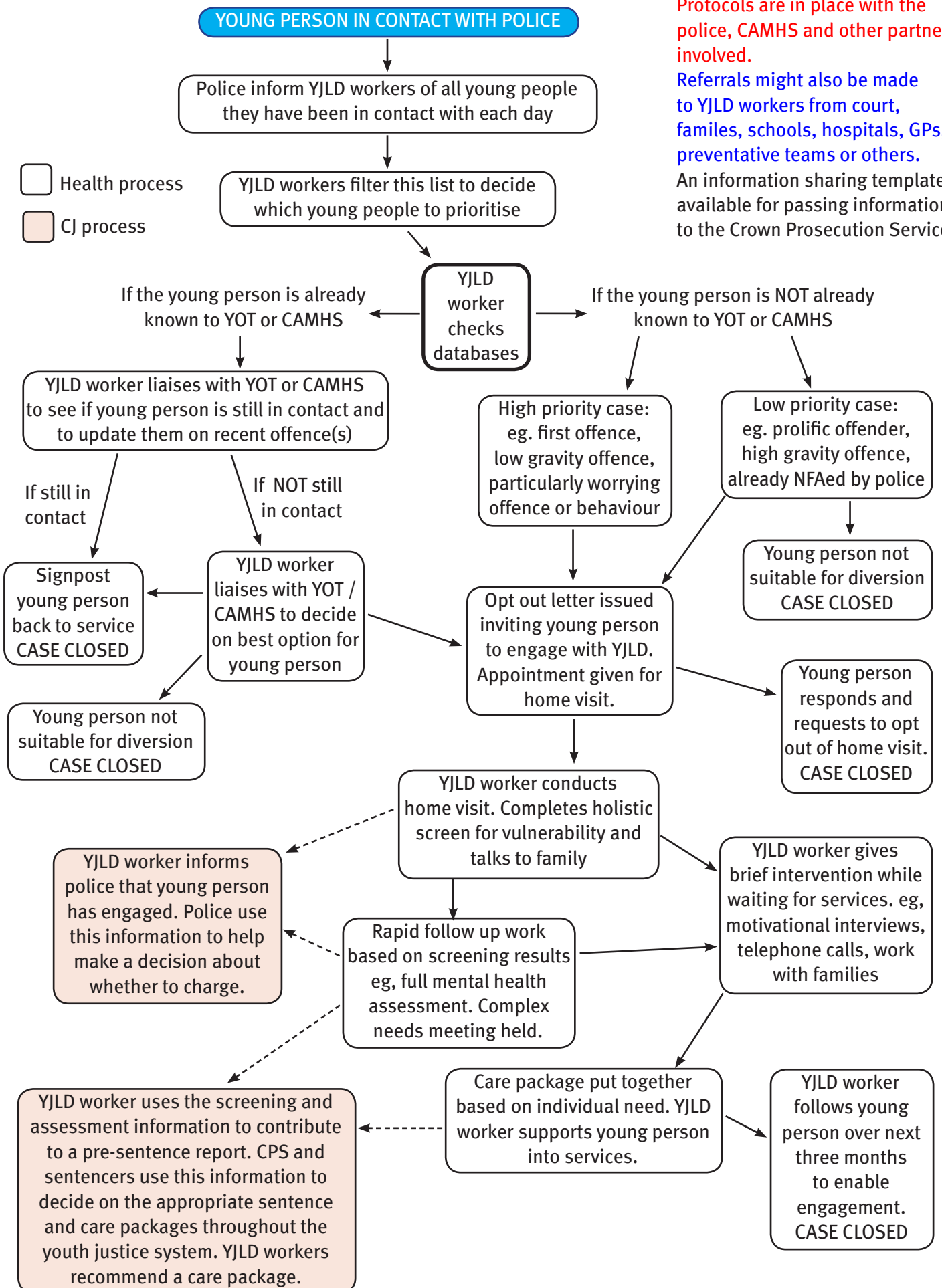


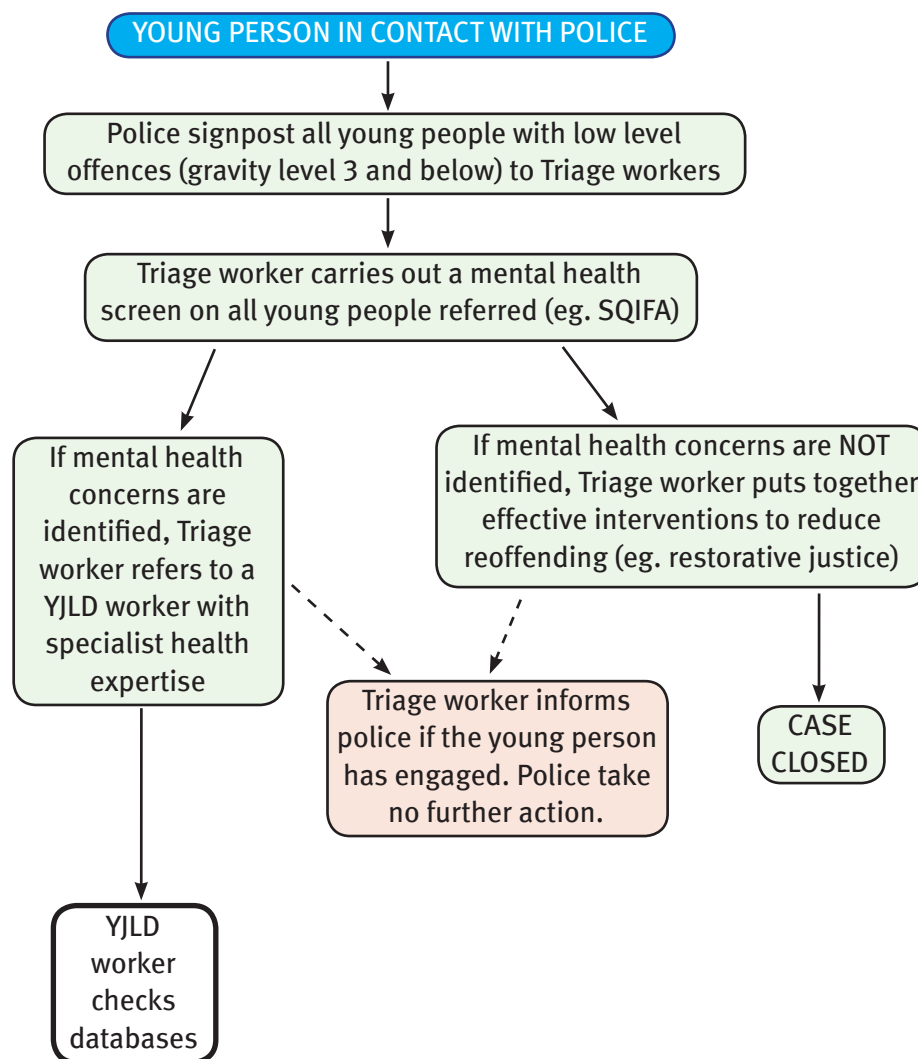
# Youth Justice Liaison and Diversion

## Pilot pathway



# Youth Justice Liaison and Diversion

## How YCAP triage fits into the pathway



Triage brings a YOT worker's expertise into police stations to make an early and rapid assessment of children and young people's needs in order to help decision-making and improve diversion of children and young people from the YJS.

In Lewisham, Triage and YJLD are being dovetailed to create a successful point of arrest diversion scheme. YJLD workers give training and supervision to triage workers in how to identify mental health issues and provide low level interventions.

- Health process
- CJ process
- Triage