

# End of Life Care Strategy

monitoring investment 2010/11



*‘How people die  
remains in the memory  
of those who live on’*

Dame Cicely Saunders

Founder of the Modern Hospice Movement

September 2011

**DH INFORMATION READER BOX**

<b>Policy</b>	Estates Commissioning IM & T Finance Social Care / Partnership Working
HR / Workforce Management Planning / Clinical	
<b>Document Purpose</b>	For Information
<b>Gateway Reference</b>	16661
<b>Title</b>	End of Life Care Strategy - monitoring investment, 2010/11
<b>Author</b>	DH
<b>Publication Date</b>	26 September 2011
<b>Target Audience</b>	PCT CEs, NHS Trust CEs, SHA CEs, Care Trust CEs, Foundation Trust CEs , Medical Directors, Directors of PH, Directors of Nursing, Local Authority CEs, Directors of Adult SSs, PCT Chairs, NHS Trust Board Chairs, Special HA CEs, Directors of Finance, Allied Health Professionals, GPs, Communications Leads, Emergency Care Leads
<b>Circulation List</b>	Voluntary Organisations/NDPBs
<b>Description</b>	Results of the Department of Health's monitoring of new investment in end of life care and spend on specialist palliative care, 2010/11
<b>Cross Ref</b>	End of Life Care Strategy Third Annual Report
<b>Superseded Docs</b>	N/A
<b>Action Required</b>	N/A
<b>Timing</b>	N/A
<b>Contact Details</b>	End of Life Care Team Department of Health Room 402, Wellington House 133-155 Waterloo Road London SE1 8UG 020 7972 3958  www.dh.gov.uk
<b>For Recipient's Use</b>	

# End of Life Care Strategy – monitoring investment, 2010/11

© Crown copyright Year 2011

First published Date

Published to DH website, in electronic PDF format only.

<http://www.dh.gov.uk/publications>

# Contents

Contents.....	3
Analysis of returns monitoring new investment in End of Life Care Services, 2010/11 .....	4
Spend on Specialist Palliative Care, 2010/11.....	8
Appendix A: Breakdown of new investment in End of Life Care Services by SHA and PCT	12
Appendix B: Breakdown of expenditure in specialist palliative care services by SHA and PCT .....	13
Appendix C: Breakdown of End of Life Care Investment classified as “Other” .....	17

# Analysis of returns monitoring new investment in End of Life Care Services, 2010/11

The End of Life Care Strategy was supported by new money in 2009/10 and 2010/11. The Strategy mandated collections from Primary Care Trusts (PCTs) and Strategic Health Authorities (SHAs) to provide information on new investment in end of life care services in their area during those years. The collection of this data was confirmed by Sir David Nicholson and data on new expenditure in 2009/10 was published with the Strategy's Second Annual Report (August 2010.)

In 2010/11, implementation of the Strategy was supported by £198 million. This was an increase on the £88 million provided in 2009/10. In both years, most of the new money went to PCT baselines.

Table 1 shows that in 2010/11 new spend on end of life care was in line with the £198 million allocation.

Category	Spend	Notes
New Investment in 2009/10 rolled over	£79.5m	Comprising £74.4m PCT spend and £5.1m SHA spend
New Investment in 2010/11 (below)	£77.4m	Comprising £67.9m PCT Spend and £9.6m SHA spend
Hospice capital enhancement projects	£40m	
DH and National EOLC Prog Spend	£7.9m	
<b>Total</b>	<b>£204.8m</b>	

Table 1: Total new spend on End of Life Care in 2010/11 as a result of the End of Life Care Strategy

As of July 2011, we had received 141 returns from PCTs and nine returns from SHAs. The PCTs reported total new investment of £63.7 million in end of life care services in 2010/11. Based on this, and assuming that the remaining PCTs are not substantially different from those that reported, it is estimated the total new investment across all PCTs in 2010/11 was £67.9 million. The SHAs reported SHA level investment of £8.6 million, and, using the same technique as for PCTs, it is estimated that overall SHA investment was £9.6 million in 2010/11. The SHA new investment was in training.

It is important to stress that figures were provided directly from PCTs and that there were a number of different approaches to classifying new investment in end of life care services. Some PCTs may have overstated their new expenditure in their return while others may have underestimated their new expenditure. Since cross checking all PCT returns for consistency is not feasible, we must take their data return as true and correct. The returns record new investment in 2010/11. We do not have information on whether the new investments in services made in 2009/10 continued to be made, but we have assumed that they have, unless reported as part of their disinvestment.

Average PCT new investment in 2010/11 was £452,000, or just over £7.50 per person over 65. As shown in Figure 1 below, the highest proportions of new spend were on care homes (26%), voluntary hospices (14%), other services (12%), specialist palliative care teams (11%) and specialist palliative care resources (11%). These are also the services that most PCTs invested in, for example 52 PCTs reported new investment in care homes. 12 PCTs reported disinvestment in end of life care services, amounting to £1.6 million.

In comparison with the returns from 2009/10, there is a notable shift in the different areas where PCTs are investing. In 2009/10, support for voluntary hospices made up 20% of new PCT investment – in 2010/11 this is only 14%. Care homes, which received 17% of PCT investment in 2009/10, received over 25% of new investment in 2010/11. Support, training and ‘other’ made up 45% of investment in 2009/10 – in 2010/11 they received only 32% of new investment. Table 2 and Figure 1 summarise PCT and SHA returns by category.

	2010/11		2009/10	
	Total Investment	% of Investment	Total Investment	% of Investment
<b>NEW PCT INVESTMENT</b>				
Raising awareness	854,396	1.3%	1,019,321	1.3%
Development of locality register	909,000	1.4%	845,000	1.1%
Assessment for carers	163,000	0.2%	522,010	0.7%
Coordination, eg coordination centres, strategic cooperation	1,747,657	2.7%	1,176,304	1.5%
Rapid response/24 hour community services	6,608,100	10.1%	6,185,214	8.1%
Palliative care transport	3,000	0.0%	224,000	0.3%
Investment in ambulance services, eg staff, capital	225,000	0.3%	206,000	0.3%
Rapid discharge facilitation	1,751,800	2.7%	1,885,682	2.5%
Improving care environments	1,157,600	1.8%	811,000	1.1%
Specialist palliative care resources - hospitals	7,152,685	10.9%	7,584,580	9.9%
Specialist palliative care teams	7,109,286	10.9%	8,796,000	11.5%
Care homes	16,610,630	25.4%	12,701,322	16.7%
Other locations: supporting the homeless	0	0.0%	197,000	0.0%
Other locations: prisons	0	0.0%	83,000	0.1%

**OTHER NEW PCT INVESTMENT**

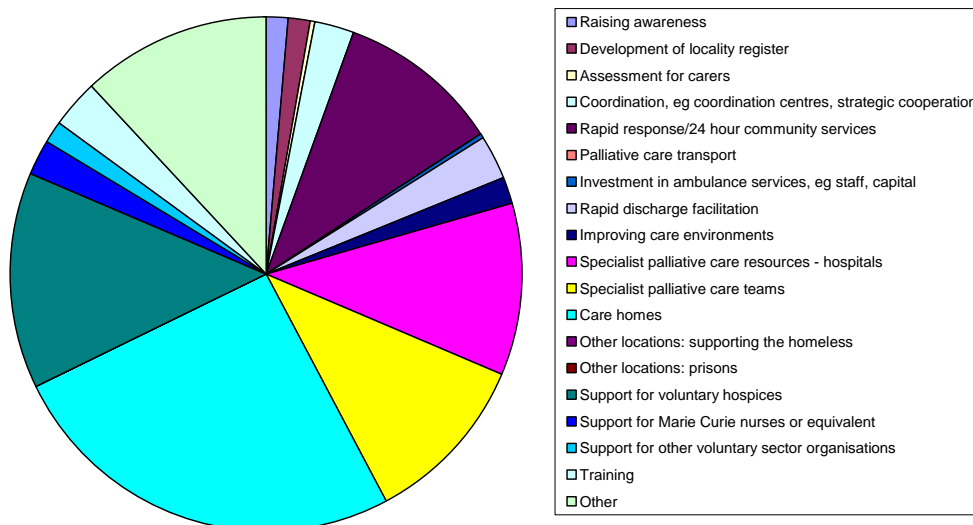
Support for voluntary hospices	9,019,891	13.8%	15,226,314	20.0%
Support for Marie Curie nurses or equivalent	1,425,291	2.2%	3,149,319	4.3%
Support for other voluntary sector organisations	838,500	1.3%	1,813,378	1.9%
Training	2,083,063	3.2%	2,118,417	3.9%
Other	7,734,645	11.8%	11,463,072	15.0%

<b>PCT Disinvestment</b>	-1,599,943	-2%	-1,580,000	-2%
--------------------------	------------	-----	------------	-----

	Total Investment	% of SHA Investment	Total Investment	% of SHA Investment
<b>SHA NEW INVESTMENT IN TRAINING</b>				
Care planning/assessment (eg NHS, social care, care homes)	3,090,000	35.7%	1,524,000	29.8%
Symptom management	166,000	1.9%	296,000	3.4%
Communication skills training	622,000	7.2%	1,166,000	13.5%
Social care staff	1,300,000	15.0%	730,000	8.4%
Other training	3,370,000	39.0%	1,313,000	15.2%
Backfill	100,000	1.2%	91,000	1.1%

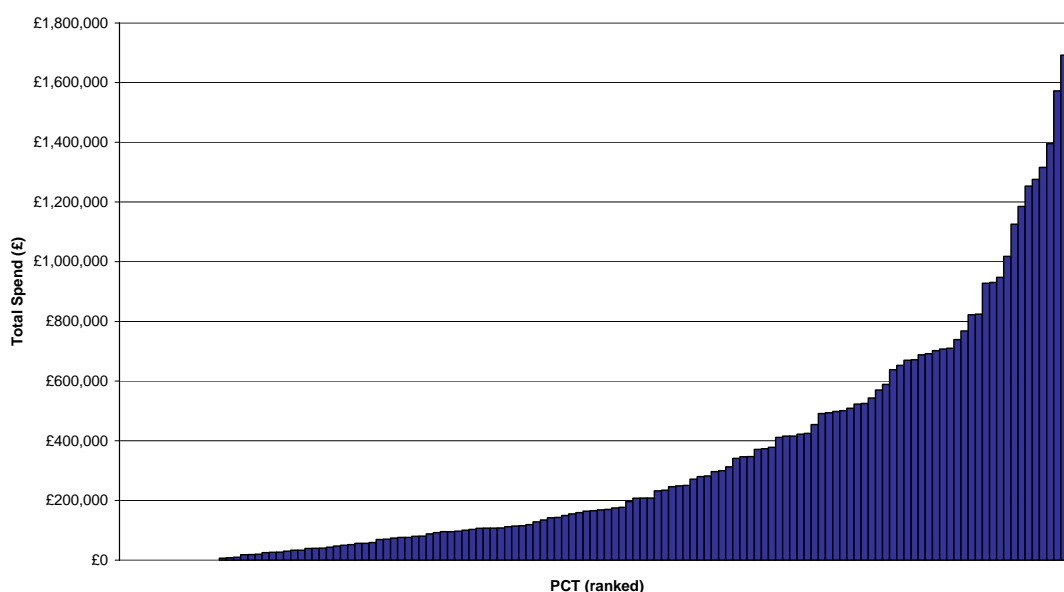
Table 2: Breakdown of new investment by PCTs and SHAs into End of Life Care. See Appendix C for a breakdown of costs under “Other”

Figure 1: PCT Spend by Category



There is considerable variation in the level of new investment between PCTs. 14 PCTs reported no new investment in end of life care services in 2010/11; in 2009/10 these 14 PCTs invested on average £394,000 (range: £55,000 - £1.02 million). 17 PCTs reported new investment of greater than £1 million, with the maximum reported investment being in East Riding of Yorkshire PCT, with £5.6 million. Even after excluding outliers, there remain large variations in investment levels. Figure 2 shows this variation in a bar chart, ranked by PCT new spend, with the top 5% of returns excluded<sup>1</sup>.

Figure 2: Bar graph of Total New Spend by PCTs, excluding outliers



<sup>1</sup> For reference, the top 5% of PCTs spent more than £1.8m in 2010/11. A table with all PCTs investment is in Appendix A.

This variation could be explained by a variety of factors:

1. Population – PCTs covering a smaller population may not need to invest as much as larger PCTs. The returns by PCTs show a fairly strong positive relationship between population and new investment<sup>2</sup>.
2. Population over 65 – PCTs covering a younger population may not need to invest as much money into end of life care services as areas with a high over 65 population. The data shows there is a reasonably strong correlation between new investment and the population over 65 years of age in each PCT.
3. Deprivation – The need for investment by PCTs with low deprivation could be much lower. After comparing the investment returns with the Index of Multiple Deprivation scores for 2010, the relationship is not strong enough to draw any robust conclusions. If anything, there is a weak negative relationship between deprivation and investment, that is, the more deprived the area, the less money that is invested.
4. Historic investment – PCTs that previously invested large sums of money on end of life care may not need to make new investment as this will have been done already. Conversely, PCTs that previously spent less on end of life care may see the funds available through the End of Life Care Strategy as a way of making a large investment in their services. Data is available for new investment in 2009/10, but data is not available on total current spend on end of life care services. There is a reasonably strong relationship between 2010/11 investment levels and 2009/10 investment levels, suggesting that PCTs that invested heavily before continue to invest heavily this year.
5. PCT declaration – As mentioned above, it is possible that PCTs may have over or underestimated their investment in end of life care based on the approach used to identify new investment. While we do not believe that this could significantly change the estimates they have provided, it is possible that some variation could be explained by this.

Also included in the £198 million was £38.7 million, which was allocated under the Multi Professional Education and Training (MPET) budget. This was devolved to SHAs and PCTs and is included in their totals for 'training'.

In addition to the expenditure detailed above, the Department of Health and the National End of Life Care Programme spent just under £7.9 million on national work and projects. The Department also provided a capital budget of £40 million for hospice enhancement projects.

---

<sup>2</sup> Correlation coefficients: PCT investment and population: 0.29  
PCT investment and population over 65: 0.36  
PCT investment and deprivation: -0.19  
PCT investment and historic investment: 0.42



# Spend on Specialist Palliative Care, 2010/11

Through the returns from PCTs and SHAs on their new investment on end of life care services, we also received information on the total amount PCTs spent on specialist palliative care services in 2010/11. The coverage was the same as for end of life care services (141 returns from PCTs, nine from SHAs). Those that responded declared spend of £385 million. Assuming that PCTs that didn't respond spent the average amount, we estimate that total spend on specialist palliative care in 2010/11 was £409.6 million across all PCTs.

In order to allow meaningful comparison with PCT spend from the last survey covering 2006/07, it was necessary to exclude some areas of spend that PCTs declared in their return as covering related activities (like end of life care services and palliative care). This amounted to approximately £74.8 million and is not included in the figures above. Total spend on specialist palliative care services in 2006/07 was £245 million, so the £409.6 million in 2010/11 represents a 49% increase in spend in real terms over four years<sup>3</sup>.

Average PCT spend in 2010/11 was £2.7 million, which equates to just under £8 per person or £840 per death. The largest portion of money was spent on adult voluntary hospices, which received £176 million or 46% of total spend. A breakdown of total spend is in Table 3 below<sup>4</sup>.

<b>PCT SPEND</b>	<b>Total Spend (£)</b>	<b>%</b>
Adult Voluntary Hospices	176,163,751	45.8%
NHS Hospices/SPC Units	68,332,321	17.7%
NHS Managed Services	98,754,623	25.6%
Voluntary Managed Services	17,168,069	4.5%
SPC services provided in hospital settings not otherwise accounted	11,585,468	3.0%
Other SPC services	13,044,905	3.4%

Table 3: Breakdown of spend on specialist palliative care by PCTs in 2010/11.

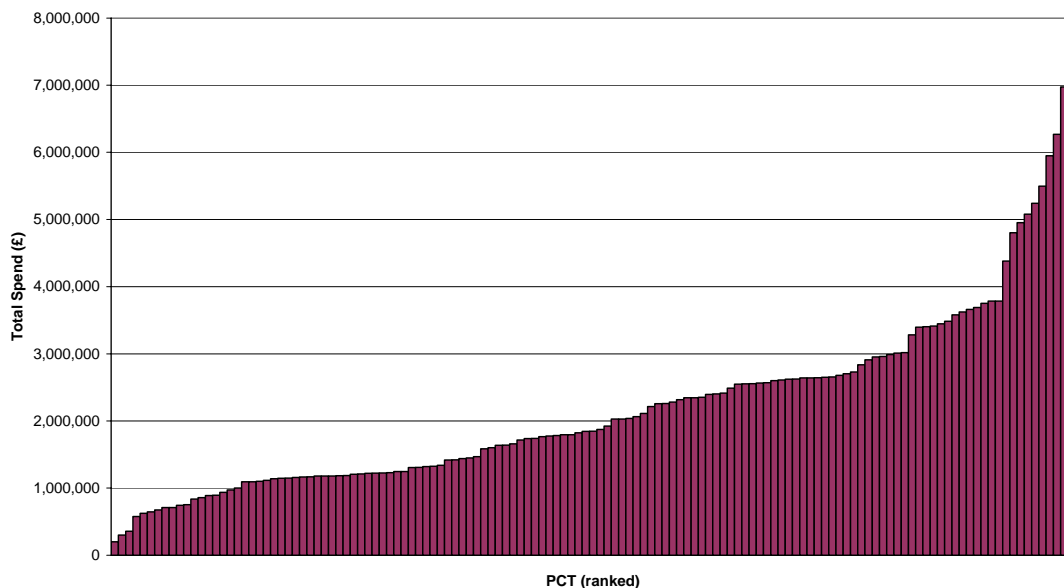
As with end of life care investment there is considerable variation in PCT spend on specialist palliative care. Figure 3 graphs PCT spending on specialist palliative care, ranked in order of spend<sup>5</sup>.

<sup>3</sup> The 2006/07 estimate (£245m) is inflated to 2010/11 prices (£274.2m) using the CPI inflator figures on the Office for National Statistics website.

<sup>4</sup> Some PCTs provided estimated spend on children's voluntary hospices, amounting to £2.7m. Spend on children's specialist palliative care services was not explicitly asked for, so this estimate will be an underestimate of true spend in this area. This estimate is included in the £74.8m estimate of "Other Declared Spend".

<sup>5</sup> Since the five highest spending PCTs spend on average five times more than the national average, this tends to distort graphs of PCT spend. For this reason, we have excluded the top 5% of PCTs from Figure 3.

Figure 3: Bar graph of Total Spend on specialist palliative care by PCTs, excluding outliers

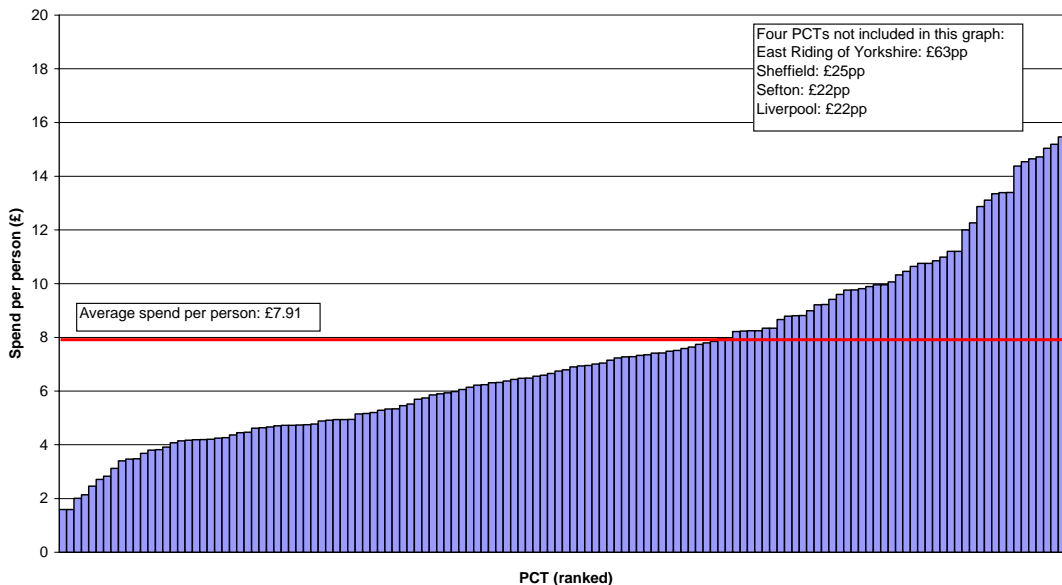


The graph shows that the majority (60%) of PCTs spent between £1 million and £3 million on specialist palliative care in 2010/11. At either extreme, Darlington PCT reported spend of £201,000 while East Riding of Yorkshire PCT spent over £21.4 million on specialist palliative care in 2010/11. This implies that the highest spending PCT spent over 100 times more than the lowest spending PCT. Even after excluding the top and bottom 10% of PCTs, there is still considerable variation, where the 90<sup>th</sup> percentile PCT spends 5.6 times more than the 10<sup>th</sup> percentile PCT. As with end of life care investment, this variation could be explained by population, deprivation and historical spend<sup>6</sup>.

Population – PCTs covering a smaller geographic area may have a smaller population requiring specialist palliative care resources. Some of this variation could disappear if we look at ‘spend per head of population’. Figure 4 graphs spend per person, ranked by PCT and includes outliers. Using this metric, the PCT with highest spend per person (Hampshire) spends 15 times more than the PCT with lowest spend per person (Hartlepool). Comparison of the 10<sup>th</sup> and 90<sup>th</sup> percentiles show that the 90<sup>th</sup> percentile spends 3.4 times more than the 10<sup>th</sup> percentile. There is a fairly strong relationship between specialist palliative care spend and population estimates.

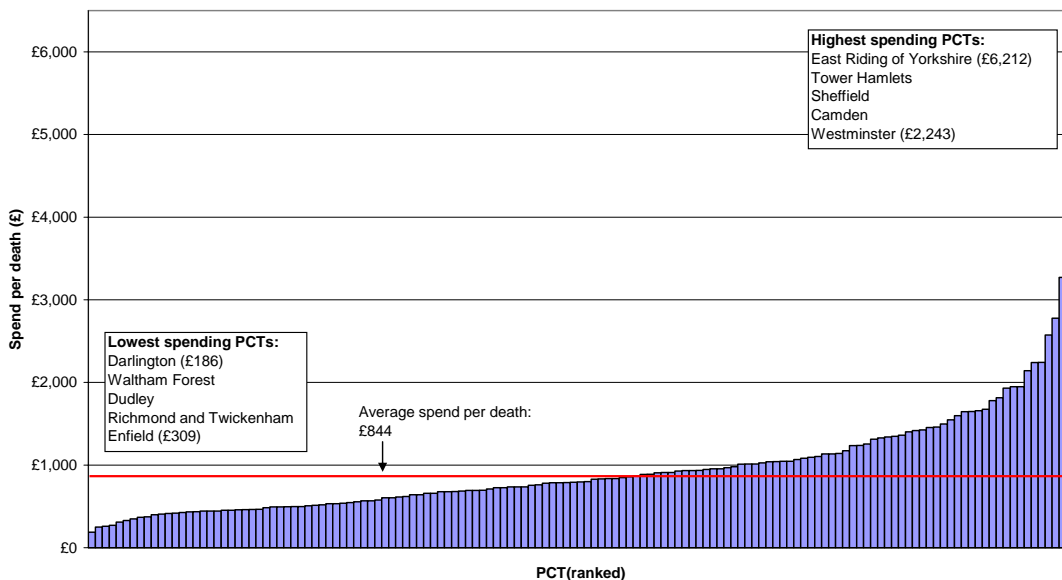
<sup>6</sup> Correlation coefficients: SPC spend and population: 0.52  
 SPC spend and population over 65: 0.47  
 SPC spend and deprivation: -0.10  
 SPC spend and previous SPC spend: 0.50

Figure 4: Bar graph of Spend per person on specialist palliative care by PCTs, excluding outliers



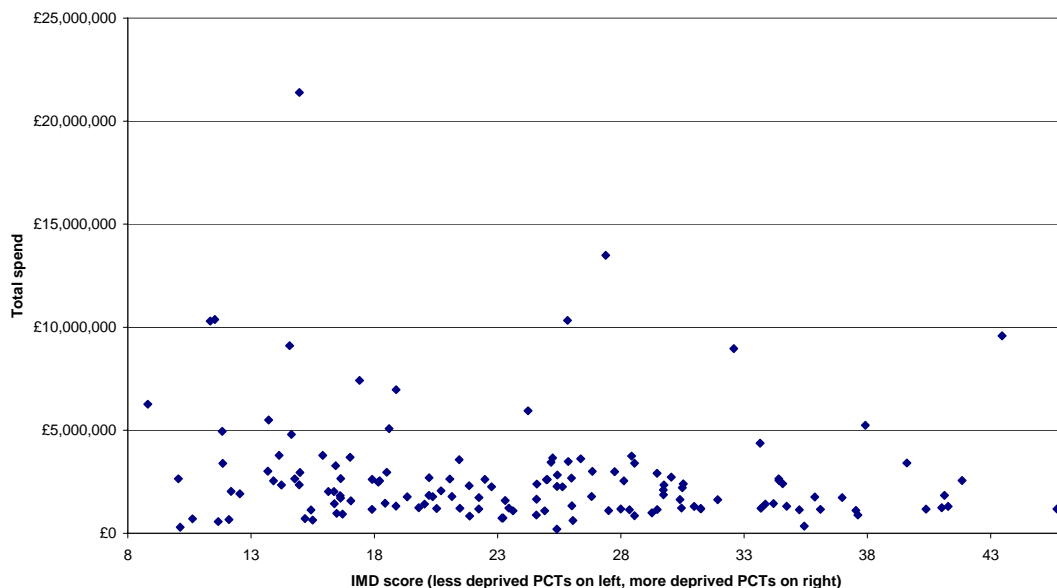
Number of deaths – Figure 5 graphs PCT spend per death. As with population, there is considerable variation from the national average (£844 per death). Just over 60% of PCTs spend less than £1,000 per death. After excluding the top and bottom 10% of PCTs, we find the 90<sup>th</sup> percentile spending 3.8 times more per death than the 10<sup>th</sup> percentile.

Figure 5: Bar chart of spend on specialist palliative care per death, ranked by PCT



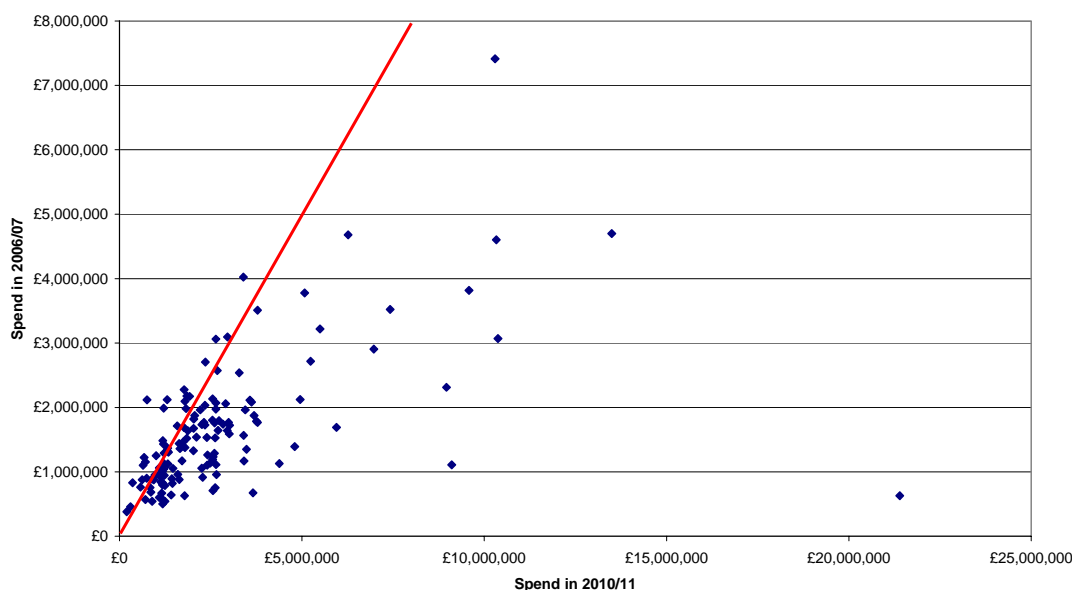
Deprivation – Spend by PCTs on specialist palliative care services could be higher in areas of high deprivation and where individuals may not be able to afford funding towards their own care. In this sense, we might expect to see more deprived areas spend more on specialist palliative care services. Figure 6 plots PCT spend against the Index of Multiple Deprivation 2010; less deprived PCTs are on the left and more deprived PCTs are on the right. The graph shows no significant relationship between specialist palliative care spend and deprivation.

Figure 6: Total spend on specialist palliative care in 2010/11, by deprivation score



Historical spend – We can compare spend in 2010/11 on specialist palliative care services with spending from 2006/07. As with new investment in end of life care, it is possible that PCTs that spent high amounts of money previously will continue to spend more in the future. Figure 7 plots specialist palliative care spend in 2010/11 with that in 2006/07. The red line represents the point where spend in both time periods are equal – that the majority of PCTs lie to the right of this line shows that PCTs tend to have spent more in 2010/11 than in 2006/07. The data shows that there is a positive relationship between historical spend and current spend on specialist palliative care services.

Figure 7: Total spend on specialist palliative care in 2010/11 and 2006/07



## Appendix A: Breakdown of new investment in End of Life Care Services by SHA and PCT

<b>NORTH EAST</b>		<b>£2,537,000</b>	<b>EAST OF ENGLAND</b>		<b>£1,723,000</b>
5ND	County Durham	£1,253,000	5P2	Bedfordshire	N/A
5J9	Darlington	£107,000	5PP	Cambridgeshire	N/A
5KF	Gateshead	£196,000	5PR	Great Yarmouth and Waveney	£128,000
5D9	Hartlepool	£40,000	5GC	Luton	N/A
5KM	Middlesbrough	£70,000	5PX	Mid Essex	£1,316,000
5D7	Newcastle	£69,000	5PQ	Norfolk	N/A
5D8	North Tyneside	£208,000	5PW	North East Essex	£246,000
TAC	Northumberland	£74,000	5PN	Peterborough	N/A
5QR	Redcar and Cleveland	£33,000	5P1	South East Essex	N/A
5KG	South Tyneside	£135,000	5PY	South West Essex	£33,000
5E1	Stockton-on-Tees Teaching	£296,000	5PT	Suffolk	N/A
5KL	Sunderland Teaching	£56,000	5PV	West Essex	N/A
<b>NORTH WEST</b>		<b>£9,270,974</b>	5P3 5P4	West Hertfordshire AND East and North Hertf	N/A
5HG	Ashton, Leigh and Wigan	£271,000	<b>LONDON</b>		<b>£8,096,394</b>
5CC	Blackburn with Darwen	£6,000	5C2	Barking and Dagenham	£768,000
5HP	Blackpool	£39,323	5A9	Barnet	£411,246
5HQ	Bolton	£52,000	TAK	Bexley	£95,000
5JX	Bury	£170,000	5K5	Brent Teaching	£18,000
5NP	Central and Eastern Cheshire	£164,085	5A7	Bromley	£207,000
5NG	Central Lancashire	£425,000	5K7	Camden	£0
5NE	Cumbria Teaching	£234,000	5C3	City and Hackney Teaching	£108,000
5NH	East Lancashire Teaching	£702,000	5K9	Croydon	£312,500
5NM	Halton and St Helens	£346,366	5HX	Ealing	£143,000
5NQ	Heywood, Middleton and Rochdale	£232,000	5C1	Enfield	£50,000
5J4	Knowsley	£159,000	5A8	Greenwich Teaching	£371,000
5NL	Liverpool	£491,000	5H1	Hammersmith and Fulham	£26,000
5NT	Manchester	£10,000	5C9	Haringey Teaching	£249,000
5NF	North Lancashire Teaching	£669,900	5K6	Harrow	£0
5J5	Oldham	£107,000	5A4	Havering	£1,018,000
5F5	Salford	£177,000	5AT	Hillingdon	£543,000
5NJ	Sefton	£142,000	5HY	Hounslow	£80,251
5F7	Stockport	£0	5K8	Islington	£0
5LH	Tameside and Glossop	£76,300	5LA	Kensington and Chelsea	£154,800
5NR	Trafford	£95,000	5A5	Kingston	£19,597
5J2	Warrington	£39,000	5LD	Lambeth	£27,000
5NN	Western Cheshire	£0	5LF	Lewisham	£175,000
5NK	Wirral	£930,000	5C5	Newham	£739,000
<b>YORKSHIRE AND HUMBER</b>		<b>£11,897,400</b>	5NA	Redbridge	£498,000
5JE	Barnsley	£149,400	5M6	Richmond and Twickenham	£373,000
5NY	Bradford and Airedale Teaching	£114,000	5LE	Southwark	£80,000
5J6	Calderdale	£0	5M7	Sutton and Merton	£0
5N5	Doncaster	£100,000	5C4	Tower Hamlets	£416,000
5NW	East Riding of Yorkshire	£5,641,000	5NC	Waltham Forest	£822,000
5NX	Hull Teaching	£347,000	5LG	Wandsworth	£112,000
5N2	Kirklees	£416,000	5LC	Westminster	£280,000
5N1	Leeds	£928,000	<b>SOUTH EAST COAST</b>		<b>£1,100,289</b>
TAN	North East Lincolnshire	£824,000	5LQ	Brighton and Hove City	£47,000
5EF	North Lincolnshire	£454,000	5P7 5P8	East Sussex Downs and Weald AND Hastings	£106,865
5NV	North Yorkshire and York	£589,000	5QA	Eastern and Coastal Kent	£103,000
5H8	Rotherham	£948,000	5L3	Medway	£56,000
5N4	Sheffield	£688,000	5P5	Surrey	£250,424
5N3	Wakefield District	£509,000	5P9	West Kent	£115,000
<b>EAST MIDLANDS</b>		<b>£1,926,637</b>	5P6	West Sussex	£422,000
5ET	Bassetlaw	£19,200	<b>SOUTH CENTRAL</b>		<b>£5,279,100</b>
5N7	Derby City	£97,000	5QG	Berkshire East	£523,000
5N6	Derbyshire County	£43,186	5QF	Berkshire West	£119,000
5PC	Leicester City	£0	5QD	Buckinghamshire	£2,768,000
5PA	Leicestershire County and Rutland	£0	5QC	Hampshire	£501,000
5N9	Lincolnshire Teaching	£707,000	5QT	Isle of Wight National Health Service	£166,100
5PD	Northamptonshire Teaching	£692,000	5CQ	Milton Keynes	£0
5EM	Nottingham City	£92,251	5QE	Oxfordshire	£168,000
5N8	Nottinghamshire County Teaching	£30,000	5FE	Portsmouth City Teaching	£0
<b>WEST MIDLANDS</b>		<b>£9,777,607</b>	5L1	Southampton City	£0
5PG	Birmingham East and North	£1,860,000	<b>SOUTH WEST</b>		<b>£20,833,200</b>
5MD	Coventry Teaching	£638,000	5FL	Bath and North East Somerset	£653,000
5PE	Dudley	£87,607	5QN	Bournemouth and Poole Teaching	£1,395,000
5MX	Heart of Birmingham Teaching	£494,000	5QJ	Bristol	£1,692,000
5CN	Herefordshire	£8,000	5QP	Cornwall and Isles of Scilly	£2,320,000
5PH	North Staffordshire	£76,000	5QQ	Devon	£2,724,000
5PF	Sandwell	£282,000	5QM	Dorset	£1,572,500
5M2	Shropshire County	£0	5QH	Gloucestershire	£2,324,485
TAM	Solihull	£59,000	5M8	North Somerset	£570,000
5M1	South Birmingham	£300,000	5F1	Plymouth Teaching	£1,126,000
5PK	South Staffordshire	£378,000	5QL	Somerset	£1,909,000
5PJ	Stoke on Trent	£1,185,000	5A3	South Gloucestershire	£671,215
5MK	Telford and Wrekin	£25,000	5K3	Swindon	£525,000
5M3	Walsall Teaching	£710,000	TAL	Torbay	£341,000
5PM	Warwickshire	£208,000	5QK	Wiltshire	£1,756,000
5MV	Wolverhampton City	£0	Note: PCTs with "N/A" have not provided a return, so their reported new investment is not known. SHA totals include SHA investment.		
5PL	Worcestershire	£1,276,000			

## Appendix B: Breakdown of expenditure in specialist palliative care services by SHA and PCT

Code	PCT Name	SPC Spend	Other Declared Spend	Total Declared Spend (inc. SPC)
<b>ENGLAND (141 PCTs)</b>		<b>£385,049,137</b>	<b>£72,085,240</b>	<b>£457,134,377</b>
<b>NORTH EAST</b>		<b>£19,153,000</b>	<b>£217,000</b>	<b>£19,370,000</b>
5ND	County Durham	£3,621,000	£22,000	£3,643,000
5J9	Darlington	£201,000	£3,000	£204,000
5KF	Gateshead	£1,156,000	£0	£1,156,000
5D9	Hartlepool	£1,218,000	£33,000	£1,251,000
5KM	Middlesbrough	£888,000	£53,000	£941,000
5D7	Newcastle	£2,346,000	£0	£2,346,000
5D8	North Tyneside	£1,737,000	£0	£1,737,000
TAC	Northumberland	£1,845,000	£0	£1,845,000
5QR	Redcar and Cleveland	£858,000	£47,000	£905,000
5KG	South Tyneside	£1,145,000	£0	£1,145,000
5E1	Stockton-on-Tees Teaching	£1,229,000	£59,000	£1,288,000
5KL	Sunderland Teaching	£2,909,000	£0	£2,909,000
<b>NORTH WEST</b>		<b>£53,658,032</b>	<b>£5,677,354</b>	<b>£59,335,386</b>
5HG	Ashton, Leigh and Wigan	£1,338,851	£928,299	£2,267,150
5CC	Blackburn with Darwen	£1,149,000	£136,000	£1,285,000
5HP	Blackpool	£1,177,627	£87,012	£1,264,639
5HQ	Bolton	£1,224,304	£0	£1,224,304
5JX	Bury	£1,183,000	£0	£1,183,000
5NP	Central and Eastern Cheshire	£2,346,044	£48,000	£2,394,044
5NG	Central Lancashire	£1,793,004	£200,000	£1,993,004
5NE	Cumbria Teaching	£2,642,000	£0	£2,642,000
5NH	East Lancashire Teaching	£2,988,000	£357,000	£3,345,000
5NM	Halton and St Helens	£2,728,688	£0	£2,728,688
5NQ	Heywood, Middleton and Rochdale	£1,420,000	£0	£1,420,000
5J4	Knowsley	£1,247,000	£47,000	£1,294,000
5NL	Liverpool	£9,580,000	£2,203,000	£11,783,000
5NT	Manchester	£1,846,888	£0	£1,846,888
5NF	North Lancashire Teaching	£2,551,000	£98,000	£2,649,000
5J5	Oldham	£1,637,800	£81,000	£1,718,800
5F5	Salford	£1,319,000	£120,000	£1,439,000
5NJ	Sefton	£5,948,369	£305,343	£6,253,712
5F7	Stockport	£1,323,976	£0	£1,323,976
5LH	Tameside and Glossop	£1,178,400	£39,100	£1,217,500
5NR	Trafford	£1,584,000	£0	£1,584,000
5J2	Warrington	£1,467,000	£911,000	£2,378,000
5NN	Western Cheshire	£973,081	£116,600	£1,089,681
5NK	Wirral	£3,011,000	£0	£3,011,000
<b>YORKSHIRE AND HUMBER</b>		<b>£78,587,459</b>	<b>£12,015,256</b>	<b>£90,602,715</b>
5JE	Barnsley	£3,403,922	£0	£3,403,922
5NY	Bradford and Airedale Teaching	£8,965,000	£0	£8,965,000
5J6	Calderdale	£743,000	£64,000	£807,000
5N5	Doncaster	£2,110,000	£141,256	£2,251,256
5NW	East Riding of Yorkshire	£21,392,000	£4,821,000	£26,213,000
5NX	Hull Teaching	£1,115,000	£516,000	£1,631,000
5N2	Kirklees	£3,659,000	£2,256,000	£5,915,000

Code	PCT Name	SPC Spend	Other Declared Spend	Total Declared Spend (inc. SPC)
5N1	Leeds	£10,330,000	£1,139,000	£11,469,000
TAN	North East Lincolnshire	£1,001,000	£0	£1,001,000
5EF	North Lincolnshire	£838,000	£0	£838,000
5NV	North Yorkshire and York	£5,498,000	£229,000	£5,727,000
5H8	Rotherham	£2,554,537	£2,300,000	£4,854,537
5N4	Sheffield	£13,494,000	£119,000	£13,613,000
5N3	Wakefield District	£3,484,000	£430,000	£3,914,000
<b>EAST MIDLANDS</b>		<b>£42,592,722</b>	<b>£14,580,714</b>	<b>£57,173,436</b>
5ET	Bassetlaw	£1,095,122	£151,607	£1,246,729
5N7	Derby City	£1,659,000	£370,000	£2,029,000
5N6	Derbyshire County	£2,962,291	£1,263,000	£4,225,291
5PC	Leicester City	£4,381,000	£4,930,000	£9,311,000
5PA	Leicestershire County and Rutland	£10,375,000	£7,311,000	£17,686,000
5N9	Lincolnshire Teaching	£6,973,500	£153,000	£7,126,500
5PD	Northamptonshire Teaching	£7,419,000	£0	£7,419,000
5EM	Nottingham City	£2,649,131	£0	£2,649,131
5N8	Nottinghamshire County Teaching	£5,078,678	£402,107	£5,480,785
<b>WEST MIDLANDS</b>		<b>£39,324,534</b>	<b>£4,802,217</b>	<b>£44,126,751</b>
5PG	Birmingham East and North	£5,241,000	£1,715,000	£6,956,000
5MD	Coventry Teaching	£3,753,100	£98,270	£3,851,370
5PE	Dudley	£753,869	£186,626	£940,495
5MX	Heart of Birmingham Teaching	£1,179,000	£0	£1,179,000
5CN	Herefordshire	£2,624,000	£520,000	£3,144,000
5PH	North Staffordshire	£1,167,000	£132,000	£1,299,000
5PF	Sandwell	£1,740,000	£210,000	£1,950,000
5M2	Shropshire County	£2,030,000	£133,000	£2,163,000
TAM	Solihull	£1,438,000	£0	£1,438,000
5M1	South Birmingham	£2,403,000	£0	£2,403,000
5PK	South Staffordshire	£3,785,000	£320,000	£4,105,000
5PJ	Stoke on Trent	£2,413,000	£0	£2,413,000
5MK	Telford and Wrekin	£1,095,000	£0	£1,095,000
5M3	Walsall Teaching	£1,212,000	£1,367,000	£2,579,000
5PM	Warwickshire	£2,643,565	£81,321	£2,724,886
5MV	Wolverhampton City	£2,565,000	£0	£2,565,000
5PL	Worcestershire	£3,282,000	£39,000	£3,321,000
<b>EAST OF ENGLAND</b>		<b>£10,109,236</b>	<b>£14,523,761</b>	<b>£24,632,997</b>
5P2	Bedfordshire	N/A	N/A	N/A
5PP	Cambridgeshire	N/A	N/A	N/A
5PR	Great Yarmouth and Waveney	£895,000	£25,000	£920,000
5GC	Luton	N/A	N/A	N/A
5PX	Mid Essex	£4,952,000	£12,324,000	£17,276,000
5PQ	Norfolk	N/A	N/A	N/A
5PW	North East Essex	£1,775,000	£1,857,000	£3,632,000
5PN	Peterborough	N/A	N/A	N/A
5P1	South East Essex	N/A	N/A	N/A
5PY	South West Essex	£2,487,236	£317,761	£2,804,997
5PT	Suffolk	N/A	N/A	N/A
5PV	West Essex	N/A	N/A	N/A
5P3 5P4	West Hertfordshire AND East and North Hertfordshire	N/A	N/A	N/A
<b>LONDON</b>		<b>£52,364,919</b>	<b>£7,291,242</b>	<b>£59,656,161</b>
5C2	Barking and Dagenham	£1,449,000	£238,000	£1,687,000

Code	PCT Name	SPC Spend	Other Declared Spend	Total Declared Spend (inc. SPC)
5A9	Barnet	£2,656,000	£0	£2,656,000
TAK	Bexley	£937,000	£56,000	£993,000
5K5	Brent Teaching	£2,213,164	£0	£2,213,164
5A7	Bromley	£2,352,000	£72,000	£2,424,000
5K7	Camden	£2,835,114	£2,075,682	£4,910,796
5C3	City and Hackney Teaching	£1,307,000	£697,000	£2,004,000
5K9	Croydon	£2,259,000	£0	£2,259,000
5HX	Ealing	£2,608,000	£0	£2,608,000
5C1	Enfield	£622,967	£18,000	£640,967
5A8	Greenwich Teaching	£1,636,000	£1,126,000	£2,762,000
5H1	Hammersmith and Fulham	£1,099,000	£0	£1,099,000
5C9	Haringey Teaching	£1,165,000	£0	£1,165,000
5K6	Harrow	£645,000	£0	£645,000
5A4	Havering	£1,715,000	£284,000	£1,999,000
5AT	Hillingdon	£1,246,000	£0	£1,246,000
5HY	Hounslow	£2,315,745	£101,560	£2,417,305
5K8	Islington	£1,766,640	£18,000	£1,784,640
5LA	Kensington and Chelsea	£1,599,956	£0	£1,599,956
5A5	Kingston	£577,633	£0	£577,633
5LD	Lambeth	£1,187,000	£487,000	£1,674,000
5LF	Lewisham	£1,308,000	£0	£1,308,000
5C5	Newham	£2,567,000	£0	£2,567,000
5NA	Redbridge	£1,783,000	£274,000	£2,057,000
5M6	Richmond and Twickenham	£301,000	£0	£301,000
5LE	Southwark	£1,872,000	£29,000	£1,901,000
5M7	Sutton and Merton	£2,954,000	£399,000	£3,353,000
5C4	Tower Hamlets	£3,414,700	£115,000	£3,529,700
5NC	Waltham Forest	£357,000	£1,280,000	£1,637,000
5LG	Wandsworth	£1,222,000	£0	£1,222,000
5LC	Westminster	£2,394,000	£21,000	£2,415,000
<b>SOUTH EAST COAST</b>		<b>£23,240,202</b>	<b>£945,402</b>	<b>£24,185,604</b>
5LQ	Brighton and Hove City	£2,680,000	£0	£2,680,000
5P7 5P8	East Sussex Downs and Weald AND Hastings and Rother	£2,704,398	£692,765	£3,397,163
5QA	Eastern and Coastal Kent	£3,578,000	£0	£3,578,000
5L3	Medway	£1,205,088	£212,637	£1,417,725
5P5	Surrey	£6,268,716	£0	£6,268,716
5P9	West Kent	£3,019,000	£0	£3,019,000
5P6	West Sussex	£3,785,000	£40,000	£3,825,000
<b>SOUTH CENTRAL</b>		<b>£28,892,907</b>	<b>£1,720,292</b>	<b>£30,613,199</b>
5QG	Berkshire East	£2,547,231	£0	£2,547,231
5QF	Berkshire West	£3,398,000	£0	£3,398,000
5QD	Buckinghamshire	£2,644,000	£0	£2,644,000
5QC	Hampshire	£10,296,528	£917,492	£11,214,020
5QT	Isle of Wight National Health Service	£2,063,541	£0	£2,063,541
5CQ	Milton Keynes	£1,139,000	£411,000	£1,550,000
5QE	Oxfordshire	£1,923,607	£17,800	£1,941,407
5FE	Portsmouth City Teaching	£2,280,000	£0	£2,280,000
5L1	Southampton City	£2,601,000	£374,000	£2,975,000
<b>SOUTH WEST</b>		<b>£37,126,126</b>	<b>£10,312,002</b>	<b>£47,438,128</b>
5FL	Bath and North East Somerset	£675,000	£0	£675,000



<b>Code</b>	<b>PCT Name</b>	<b>SPC Spend</b>	<b>Other Declared Spend</b>	<b>Total Declared Spend (inc. SPC)</b>
5QN	Bournemouth and Poole Teaching	£1,418,000	£610,000	£2,028,000
5QJ	Bristol	£3,446,000	£474,000	£3,920,000
5QP	Cornwall and Isles of Scilly	£2,623,000	£4,972,000	£7,595,000
5QQ	Devon	£3,690,000	£0	£3,690,000
5QM	Dorset	£4,803,000	£0	£4,803,000
5QH	Gloucestershire	£9,107,886	£224,787	£9,332,673
5M8	North Somerset	£711,000	£0	£711,000
5F1	Plymouth Teaching	£2,257,000	£3,029,000	£5,286,000
5QL	Somerset	£1,824,000	£0	£1,824,000
5A3	South Gloucestershire	£710,240	£459,215	£1,169,455
5K3	Swindon	£2,029,000	£543,000	£2,572,000
TAL	Torbay	£1,794,000	£0	£1,794,000
5QK	Wiltshire	£2,038,000	£0	£2,038,000
Note: PCTs with "N/A" have not provided a return, so their reported spend is not known.				

## Appendix C: Breakdown of End of Life Care Investment classified as "Other"

PCT	Total spend classified as "Other"	Detail	Cost
Barking and Dagenham	£238,000	Palliative Care Network	£238,000
		Gold Standards Framework	£25,000
		CHC Nurse supporting fast track / terminally ill patients	£43,000
		CHC fast track / terminally ill patients	£250,000
		EoLC Project Management	£40,000
Bath and North East Somerset	£458,000	Nursing Support to GP's on EoLC planning and register	£10,000
		Community Nursing	£90,000
		Intermediate EOL Care Packages	£150,000
Berkshire East	£167,000	GPSI	£17,000
Birmingham East and North	£37,000	Specialist Pharmacists	£37,000
Blackpool	£23,013	Macmillan GP (funded by Macmillan and GP employed by PCT)	£23,013
Brighton and Hove City	£7,000	End of Life Information resource (carers)	£7,000
Cornwall and Isles of Scilly	£61,000	GSF training in Care Homes and Community Hospitals	£61,000
Derbyshire County	£36,000	GP EOL Facilitator Sessions (training and engagement)	£36,000
Devon	£1,125,000	Hospital services incl drugs	£1,125,000
Dorset	£10,000	GP EOLC Clinical Lead	£10,000
Great Yarmouth and Waveney	£64,000	End Of Life GP Facilitator	£25,000
		Marie Curie Delivering Choice Team	£39,000
		24/7 advice (Willowbrook)	£65,335
		End of Life Facilitator Post (Halton Haven)	£77,000
Halton and St Helens	£346,366	HBC End of Life	£204,031
Havering	£284,000	Palliative Care network	£284,000
Heart of Birmingham Teaching	£284,000	NHS investment for End of Life provision	£284,000
		Community support for people wishing to die at home (Children)	£111,000
Herefordshire	£130,000	Palliative district nursing	£19,000
Hillingdon	£300,000	Four Palliative beds Care in community hospital	£300,000
Isle of Wight National Health Service	£50,266	Psychologist	£50,266
Lewisham	£86,000	GSF Facilitator for GPs/LES/Improvement Officer hospital care	£86,000
Lincolnshire Teaching	£110,000	Palliative Care Consultant recruitment	£110,000
Mid Essex	£300,000	Cancer Drugs (estimated palliative care element)	£300,000
		Community Equipment	£50,000
Newham	£115,000	Psychologist	£65,000
		Going for Gold Development Programme	£12,000
		Macmillan GP	£23,000
North Lancashire Teaching	£35,000		
North Yorkshire and York	£26,000	Patient Care Pathway Audit	£26,000
Oldham	£26,000	Citizen Advice Bureau	£26,000
		Community Equipment for EoLC	£15,000
Oxfordshire	£16,000	Patient held records	£1,000
Redbridge	£274,000	Palliative Care network	£274,000
Richmond and Twickenham	£45,000	LCP in the community and GP Clinical lead	£45,000
		Consultant in Palliative Medicine	£145,000
		Community Palliative care teams	£80,000
		Welfare Benefits Worker	£0
		Volunteer Co-ordinator	£4,000
		Complimentary Therapy	£0
		Supportive Care including transport, raising awareness, advocacy, bereavement support groups etc	£0
		Medical Secretary to support Consultant's post	£10,000
		Strategic Partner to do Feasibility Study	£25,000
Sandwell	£264,000	Personal Health Budgets	£0
Sheffield	£366,000	Home care packages to allow patients to die at home	£366,000
		Respite Care Facilities	£70,000
		CHC Fast Track Activity increase	£981,000
Somerset	£1,117,000	CHC Staffing requirements to support Fast Track activity increases	£66,000
South Birmingham	£20,000	Bereavement Support	£20,000
		East palliative care basic care service (palliative care support team community project )	
South Staffordshire	£31,000		£31,000
Tameside and Glossop	£29,000	GP Facilitator	£29,000
Torbay	£50,000	funding for substantive End of Life Lead Commissioner	£50,000
		non recurrent investment(bereavement support,EOL Comms and COPD pilot)	
Wakefield District	£90,000		£90,000
Walsall Teaching	£656,000	Development & commissioning of new Palliative Care centre	£656,000
Waltham Forest	£303,000	Palliative Care Network	£303,000
Warwickshire	£14,000	GP with special interest	£14,000
West Kent	£11,000	GP / Practice Based Commisisoning support	£11,000
West Sussex	£57,000	EOLC Facilitator	£57,000
Westminster	£31,000	Dementia Voice Nurse	£31,000
Wiltshire	£42,000	CHC Team Costs	£42,000

Note: Some costs rounded to the nearest £1,000

