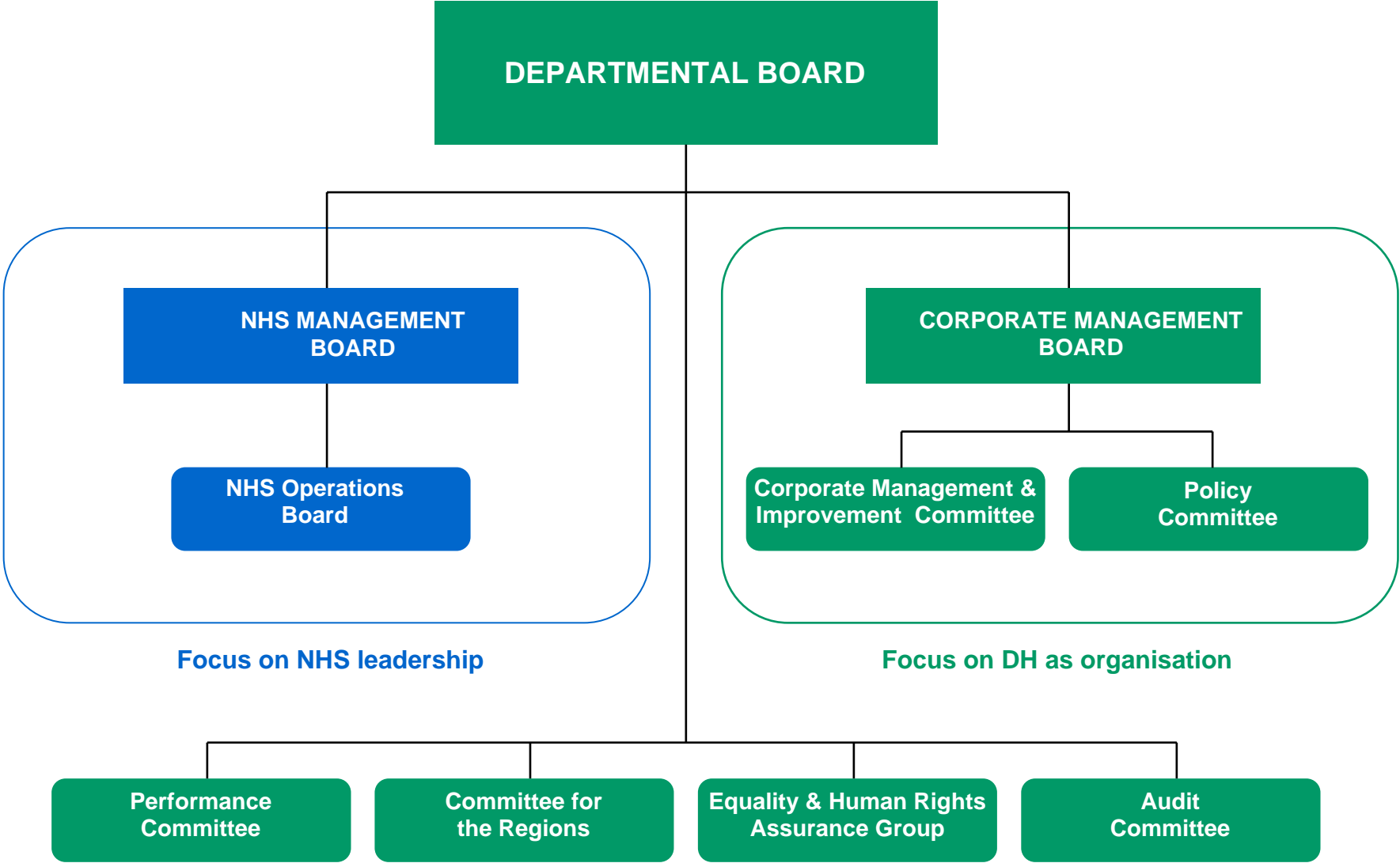


DH BOARDS AND COMMITTEES STRUCTURE



The above diagram shows the Department of Health's Boards and Committees structure.

The Departmental Board sits at the top of the diagram, has overall responsibility for the strategic direction of the Department, and sets the overall planning framework.

There are six Boards or Committees, which are shown under the Departmental Board. These are:

- the NHS Management Board
- the Corporate Management Board
- the Performance Committee
- the Committee for the Regions
- the Equality and Human Rights Assurance Group
- and the Audit Committee

The NHS Management Board focuses on NHS Leadership and the diagram shows that the NHS Management Board is supported by a sub-group called the NHS Operations Board.

The Corporate Management Board focuses on the Department of Health as an organisation. The diagram shows that the Corporate Management Board is supported by two sub-committees, which are the Corporate Management and Improvement Committee and the Policy Committee.

The Performance Committee, the Committee for the Regions, the Equality and Human Rights Assurance Group, and the Audit Committee do not have any sub-committees.